

INDEX MAP
Scale 1"=600'
P.C. 5643

B.M. 5-30 ELEV. 31.089 F.B. 2526 PG. 13-1956 ADJ.
U.S. 2867 D-167 (U.S.C. & G.S.)
DOMINGUEZ WATER PUMPING STA.
NEAR INT. CARSON & ALAMEDA ST.
IN THE CENTER OF THE FIRST COLUMN
S. OF CENTER DOOR IN WEST SIDE,
4' ABOVE GROUND STD. TRIANGLE SET
VERT. BY U.S.C. & G.S.

LOMITA BLDG. DIST. NO. 71

- NOTES
1. PROVIDE STAKES ON THE PROPERTY LINE OR PROPERTY LINES PRODUCED AT RIGHT ANGLES TO THE SEWER LINE AT THE CENTER LINE OF EACH MANHOLE.
 2. THE REPRESENTATIVE OF THE COUNTY ENGINEER WILL SURVEY OR LAY OUT ANY PORTION OF THE WORK.
 3. THE OWNER OR HIS AUTHORIZED REPRESENTATIVE SHALL FURNISH THE COUNTY ENGINEER WITH GRAB SHEETS AND STATIONING FOR ALL HOUSE LATERALS AND Y BRANCHES AND SHALL PROVIDE STAKES FOR THEM AT THEIR PROPER LOCATIONS WITH STATIONING PLAINLY MARKED. ANY CHANGE IN LOCATION SHALL BE REQUESTED IN WRITING BY THE OWNER OR HIS REPRESENTATIVE.
 4. THE PRIVATE ENGINEER SHALL FINISH THE HOUSE LATERAL DEPTH AT THE PROPERTY LINE BELOW THE TOP OF CURB ELEVATION FOR EACH HOUSE LATERAL ON THE GRADE SHEET.
 5. NO BYPASSING SHALL BE MADE IN THESE PLANS WITHOUT THE APPROVAL OF THE COUNTY ENGINEER.
 6. USE STANDARD MANHOLE FRAMES AND COVERS, S-0-117.
 7. USE STANDARD STRUCTURE PIPE.
 8. USE CEMENT MORTAR OR "WEDGE-LOCK" OR "SPREAD-BEAT" FOR ALL V.C.P. JOINTS PER SPEC'S, SECS. 28 & 29.
 9. RESURFACE ALL TRENCH WITHIN PAVED AREA TO MEET L.A. COUNTY ROAD DEPT. OR CALIF. STATE HIGHWAY REQUIREMENTS IN ACCORDANCE WITH PERMITS.
 10. ENCASE FOUR FEET OF SEWER AT POINTS OF INTERFERENCE WITH POLES, CASE NO. S-0-172.
 - 11.
 12. ALL STRUCTURES SHALL BE BRICK SEWER STRUCTURES, S-0-104, EXCEPT AS NOTED.
 13. P.C.E. ALLOWABLE LEAKAGE TEST USE FORMULA NO. _____, SPEC'S, SEC. 54.
 14. MANHOLE TOPS IN UNIMPROVED RIGHTS-OF-WAY TO BE SIX INCHES ABOVE FINISHED GRADE.
 15. THE CONTRACTOR SHALL NOTIFY THE CONSTRUCTION & STORM DRAIN DIVISION BY TELEPHONE, MADISON 5-272, EXT. 8453 AT LEAST TWENTY-FOUR HOURS BEFORE STARTING ANY WORK UNDER THIS CONTRACT.
 16. STANDARD SPECIFICATIONS DATED JANUARY 1, 1960 APPLY IN THE CONSTRUCTION OF THIS PROJECT.

NO CHARGE FOR COLLECTIONS
S. L. ...

PROFILE ALIGNMENT AND GRADE OF **P.C. 5643**
SANITARY SEWERS PAGE **1**
TO BE CONSTRUCTED IN **J.L.I. 0354.37**

218TH ST.

PRIVATE CONTRACT NO. 5643

W.S. 30
1 SHEET, 2 PAGES

SCALE: VERT. 1"=4' 16 AUGUST, 1960

PREPARED IN THE OFFICES OF
QUINTON ENGINEERS LTD.
LOS ANGELES, CALIFORNIA

By *H. W. ...*
REG. C. E. NO. 2111

FOR LEGEND SEE PLAN NO. S-A-64

NOTES

GRADES TO WHICH THIS IMPROVEMENT IS TO BE CONSTRUCTED ARE SHOWN ON PLANS AND PROFILES. GRADE POINTS FOR TOP OF CURB, CENTER LINE OF SEWER, OR CENTER LINE OF ALLEYS ARE SHOWN BY CIRCLES ON PROFILES. AT ALL POINTS BY OTHER DESIGNATED POINTS THE GRADES SHALL BE ESTABLISHED SO AS TO CONFORM TO A STRAIGHT LINE DRAWN BETWEEN SAID DESIGNATED POINTS.

ELEVATIONS ARE IN FEET ABOVE U.S.C. & G.S. SEA LEVEL DATUM OF 1929.

THIS DRAWING AND THE DATA HEREON ARE HEREBY MADE A PART OF THE SPECIFICATIONS.

WORK SHALL BE CONSTRUCTED ACCORDING TO SPECIFICATIONS ON FILE IN THE OFFICE OF THE COUNTY ENGINEER AND SHALL BE PROSECUTED ONLY IN THE PRESENCE OF THE COUNTY ENGINEER.

BEFORE WORK CAN BE STARTED THE CONTRACTOR MUST OBTAIN A PERMIT TO EXCAVATE IN COUNTY STREETS FROM THE L. A. COUNTY ROAD DEPT., DISTRICT OFFICE NO. 3, AND PAY A FEE TO THE COUNTY ENGINEER, ROOM 324 SAN AMERICAN BUILDING, 125 1/2 BROADWAY APPROPRIATE TO COVER THE COST OF CONSTRUCTION INSPECTION AND RECORD PLANS.

APPROVAL OF THIS PLAN BY THE COUNTY OF LOS ANGELES DOES NOT CONSTITUTE A REPRESENTATION AS TO THE ACCURACY OF THE LOCATION OR OF THE EXISTENCE OR NON-EXISTENCE OF ANY UNDERGROUND UTILITY PIPE, OR STRUCTURE WITHIN THE LIMITS OF THE PROJECT. THIS NOTE APPLIES TO ALL PAGES.

IF WORK IS TO BE DONE IN A STATE HIGHWAY, A PERMIT MUST BE OBTAINED FROM THE STATE OF CALIFORNIA, DIVISION OF HIGHWAYS, 129 SOUTH SPRING STREET.

COUNTY OF LOS ANGELES, CALIFORNIA

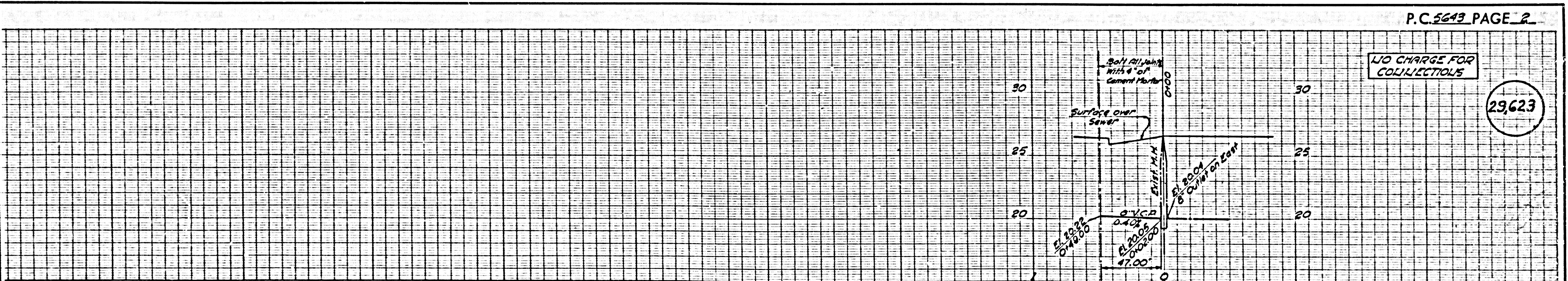
APPROVED, JOHN A. LAMBE, COUNTY ENGINEER
APPROVED, G. R. COMPTON, CHIEF ENGINEER

BY *[Signature]* DESIGN ENGINEER
BY *[Signature]* CIVIL ENGINEER

CHECKED BY *R. F. ...* 8-22-60
OFFICE OF COUNTY ENGINEER, BLDG. NO. 11636

APPROVED BY *[Signature]*
INDUSTRIAL WASTE DIVISION

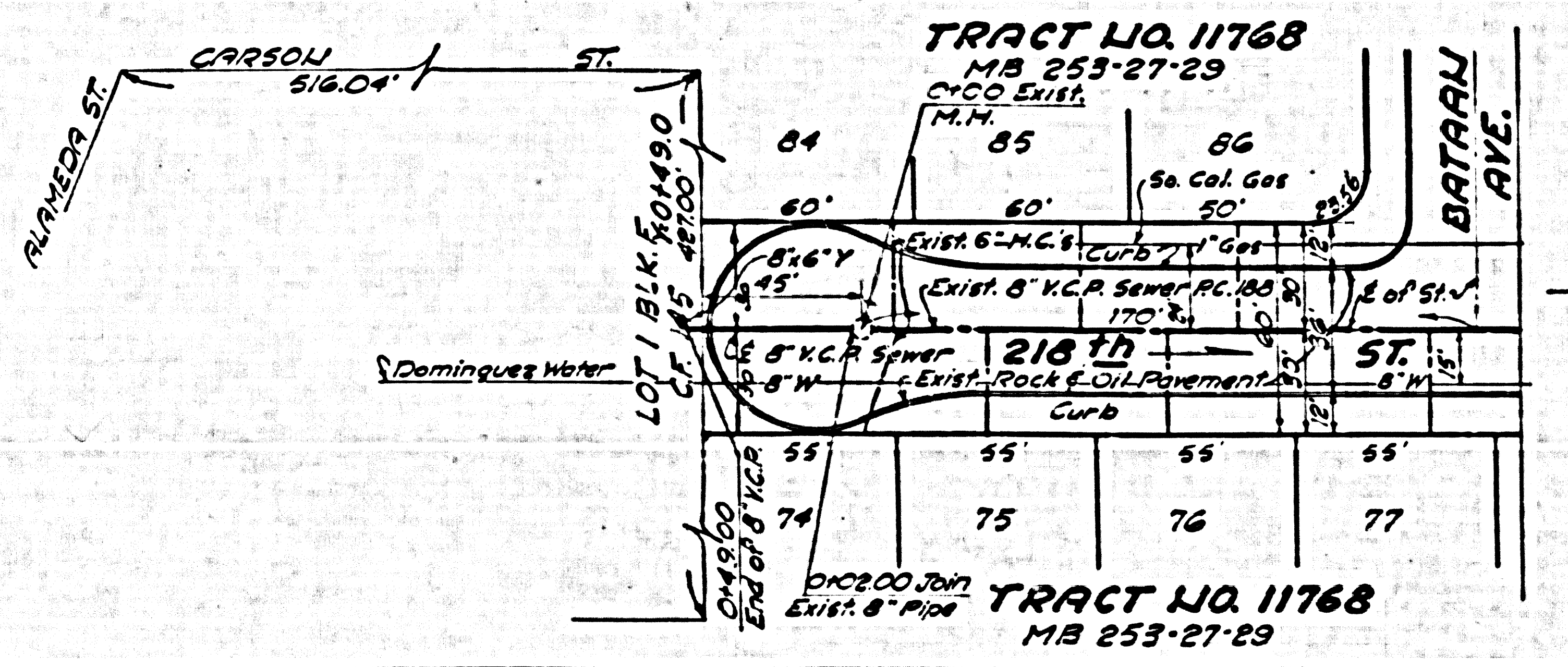
SUBMITTED BY *[Signature]*
PALOS VERDES-CENTINELA VALLEY REGIONAL ENGINEER



P.C. 5643 PAGE 2

NO CHARGE FOR COLLECTIONS

29,623



TRACT NO. 11768
MB 253-27-29
C.Y.C.O. EXIST.
M.H.

TRACT NO. 11768
MB 253-27-29