

DOUBLE SCALE
LOMITA BLDG. DIST. NO. 7.I

PROFILE ALIGNMENT AND GRADE OF P.C. 5648
SANITARY SEWERS PAGE 1
TO BE CONSTRUCTED IN J.N. 0354.33

TRACT No 25664
PRIVATE CONTRACT NO. 5648
W.S. 27

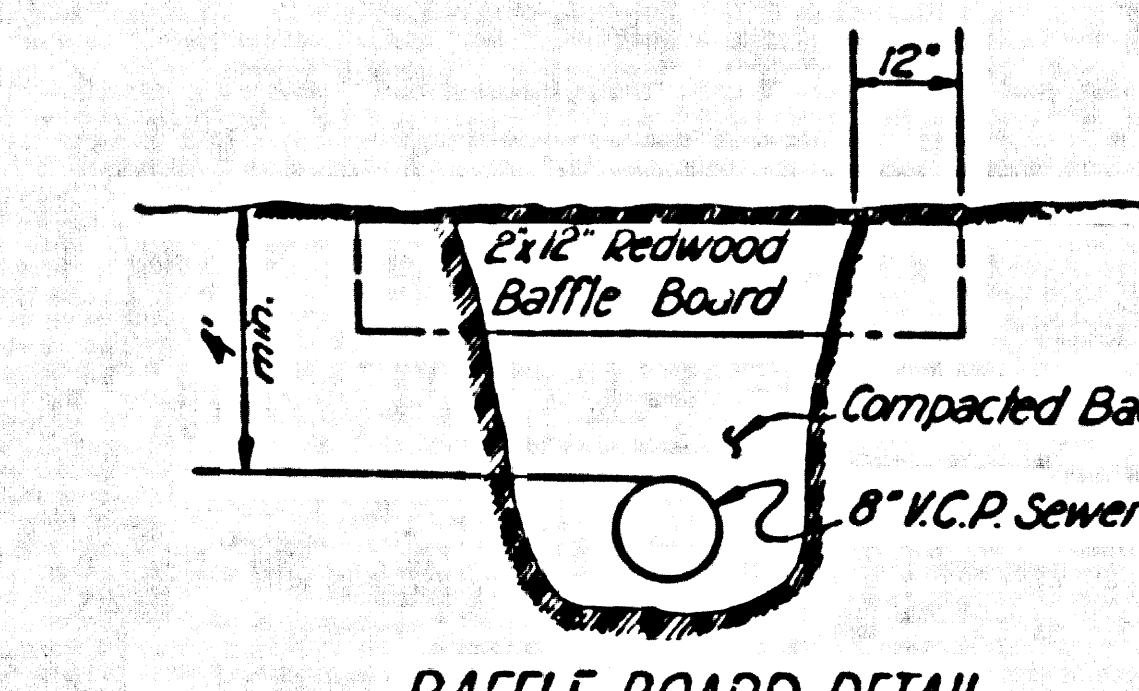
2 SHEETS, 4 PAGES

SCALE: VERT. 1" = 4' HORIZ. 1" = 100'
JUNE, 1960

PREPARED IN THE OFFICES OF
ENGINEERING SERVICE CORPORATION

FOR LEGEND SEE PLAN NO. S-A-64

31189

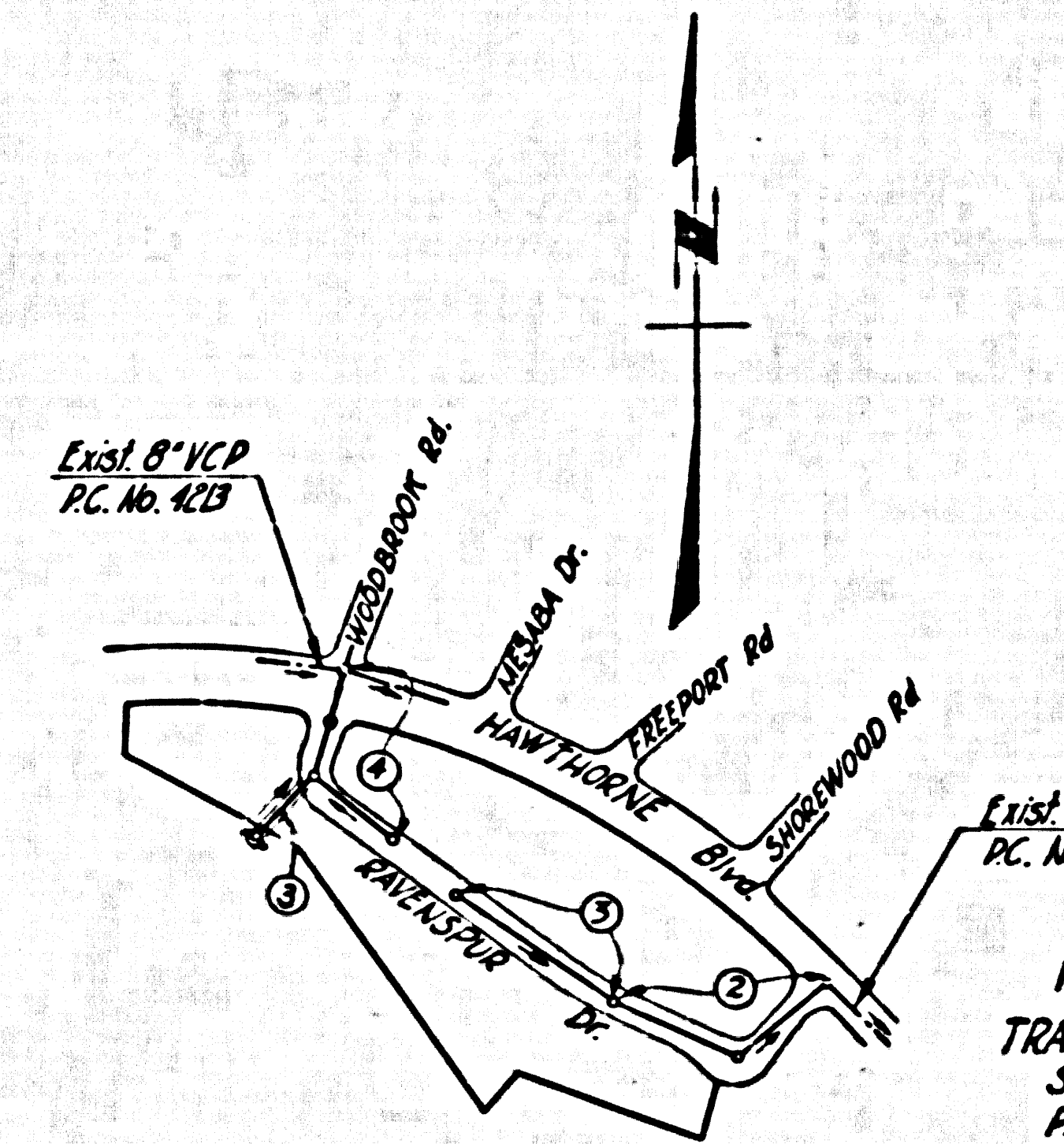


BAFFLE BOARD DETAIL

Note:

- Each End of Baffle Board will extend on foot into undisturbed ground.
- The Upper layer of backfill to be one foot minimum of Topsoil. Topsoil shall be tamped in place and planted with mustard and rye grass seed and adequately watered until growth is restored.
- Baffle Boards shall be spaced so that the top of the lower shall be level with the bottom of the next higher board.
- If 90% compaction is obtained, baffle boards will not be required.

NO CHARGE FOR CONNECTIONS
Palos Verdes



BENCH MARK S.Y. 4371
S.P.K. & L. in curb 1'40" N'1/4 of Ct.
HAWTHORNE Blvd. 1'5" W'1/4 of Curb
R.E.T. on Island 1'34" N'1/4 of Ct.
SHADEWOOD Ave.
Elev. 1033.211
Palos Verdes Road 1959

- NOTES:
- PROVIDE STAKES ON THE PROPERTY LINE OR PROPERTY LINES PRODUCED AT RIGHT ANGLES TO THE SEWER LINE AT THE CENTER LINE OF EACH MANHOLE.
 - NO REPRESENTATIVE OF THE COUNTY ENGINEER WILL SURVEY OR LAY OUT ANY PORTION OF THE WORK.
 - THE OWNER OR HIS AUTHORIZED REPRESENTATIVE SHALL FURNISH THE COUNTY ENGINEER WITH GRADE SHEETS AND STATIONING FOR ALL HOUSE LATERALS AND Y BRANCHES AND SHALL PROVIDE STAKES FOR THEM AT THEIR PROPER LOCATIONS WITH STATIONING PLAINLY MARKED. ANY CHANGE IN LOCATION SHALL BE REQUESTED IN WRITING BY THE OWNER OR HIS REPRESENTATIVE.
 - THE PRIVATE ENGINEER SHALL FURNISH THE HOUSE LATERAL DEPTH AT THE PROPERTY LINE BELOW THE TOP OF CURB ELEVATION FOR EACH HOUSE LATERAL ON THE GRADE SHEET.
 - NO REVISIONS SHALL BE MADE IN THESE PLANS WITHOUT THE APPROVAL OF THE COUNTY ENGINEER.
 - USE STANDARD MANHOLE FRAMES AND COVERS, S-117.
 - USE STANDARD STRENGTH PIPE EXCEPT AS NOTED.
 - USE CEMENT MORTAR OR "WEDG-LOC" OR "SPED-SEAL" FOR ALL V.C.P. JOINTS PER SPEC., SECS. 56 & 48.
 - RESURFACE ALL TRENCH WITHIN PAVED AREA TO MEET L.A. COUNTY ROAD DEPT. OR CALIF. STATE HIGHWAY REQUIREMENTS IN ACCORDANCE WITH PERMITS.
 - ENCASE FOUR FEET OF SEWER AT POINTS OF INTERFERENCE WITH POLES, CASE BY. S-172.
 - HOUSE LATERALS TO BE CONSTRUCTED WITH INVERTS AT PROPERTY LINE. 6" PRECAST CONCRETE CURB GRADE.
 - ALL STRUCTURES SHALL BE BRICK SEWER STRUCTURES, S-114.
 - FOR ALLOWABLE LEAKAGE TEST USE FORMULA NO. 1, SPEC., SEC. 64.
 - MANHOLE TOPS IN UNPAVED RIGHTS-OF-WAY TO BE SIX INCHES ABOVE FINISHED GRADE.
 - THE CONTRACTOR SHALL NOTIFY THE CONSTRUCTION & STORM DRAIN DIVISION BY TELEPHONE, MARSHON 5-874, EXT. 6158 AT LEAST TWENTY-FOUR HOURS BEFORE STARTING ANY WORK UNDER THIS CONTRACT.
 - STANDARD SPECIFICATIONS DATED OCT. 10, 1960 APPLY IN THE CONSTRUCTION OF THIS PROJECT.

NO CONNECTIONS FOR THE DISPOSAL OF INDUSTRIAL WASTES SHALL BE MADE TO SEWERS SHOWN ON THESE DRAWINGS WITHOUT WRITTEN PERMISSION FROM THE COUNTY ENGINEER AND GENERAL MANAGER OF THE COUNTY SANITATION DISTRICTS.

ENGINEERING SERVICE CORPORATION				
1127 W. WASHINGTON BLVD.				
LOS ANGELES 15, CALIF. RL 9-7281				
REVISIONS		TRACED BY <u>C.E.</u>		
		DES'G'D BY <u>E.M.B.</u>		
		CK'D BY <u>A.A.M.S.</u>		
		SUBMITTED		
SUB STRUCTURES OK'D				
W. O. NO.	DWS. NO.	DATE	SCALE	L.B. F.B.
6624-2		June 1960	As Noted	10/11/59 12/17/59

NOTES:

GRADES TO WHICH THE IMPROVEMENT IS TO BE CONSTRUCTED AND SHOWN ON PLANS AND PROFILES. GRADE POINTS FOR TOP OF CURB, CENTER LINE OF STREET, OR CENTER LINE OF ALLEY ARE SHOWN IN CIRCLES. AT ALL POINTS BETWEEN DESIGNATED POINTS THE GRADE SHALL BE ESTABLISHED SO AS TO CONFORM TO A STRAIGHT LINE DRAWN BETWEEN SAID DESIGNATED POINTS.

ELEVATIONS ARE IN FEET ABOVE U.S.C. & G.S. SEA LEVEL DATUM OF 1929.

THE DRAWING AND THE DATA HEREON ARE HEREBY MADE A PART OF THE SPECIFICATIONS.

WORK SHALL BE CONSTRUCTED ACCORDING TO SPECIFICATIONS ON FILE IN THE OFFICE OF THE COUNTY ENGINEER AND SHALL BE PROSECUTED ONLY IN THE PRESENCE OF THE COUNTY ENGINEER.

BEFORE WORK CAN BE STARTED, THE CONTRACTOR MUST OBTAIN A PERMIT TO EXCAVATE IN COUNTY STREETS FROM THE L.A. COUNTY ROAD DEPT., DISTRICT OFFICE NO. 3, AND PAY A FEE TO THE COUNTY ENGINEER, ROOM 340 COUNTY ENGINEERING BLDG., 1127 W. WASHINGTON BLVD., LOS ANGELES 15, CALIF. TO COVER THE COST OF CONSTRUCTION INSPECTION AND RECORD PLANS.

APPROVAL OF THIS PLAN BY THE COUNTY OF LOS ANGELES DOES NOT CONSTITUTE A REPRESENTATION AS TO THE ACCURACY OF THE LOCATION OF OR THE EXISTENCE OR NON-EXISTENCE OF ANY UNDERGROUND UTILITY PIPES OR STRUCTURES WITHIN THE LIMITS OF THIS PROJECT. THIS NOTE APPLIES TO ALL PAGES.

IF WORK IS TO BE DONE BY A STATE HIGHWAY, A PERMIT MUST BE OBTAINED FROM THE STATE OF CALIFORNIA, DIVISION OF HIGHWAYS, 120 SOUTH SPRING STREET.

COUNTY OF LOS ANGELES, CALIFORNIA

APPROVED, JOHN A. LAMBE, COUNTY ENGINEER

APPROVED, C.E. COMPTON CHIEF ENGINEER

BY C.E. Compton ASSESSMENT ENGINEER

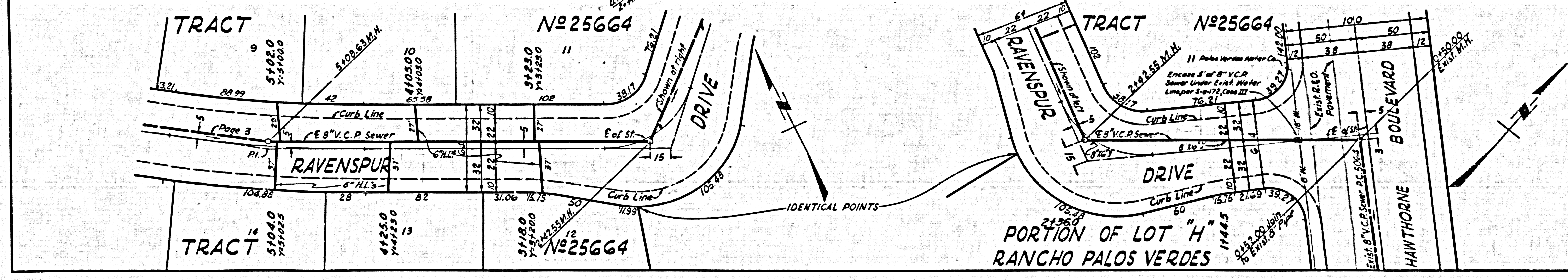
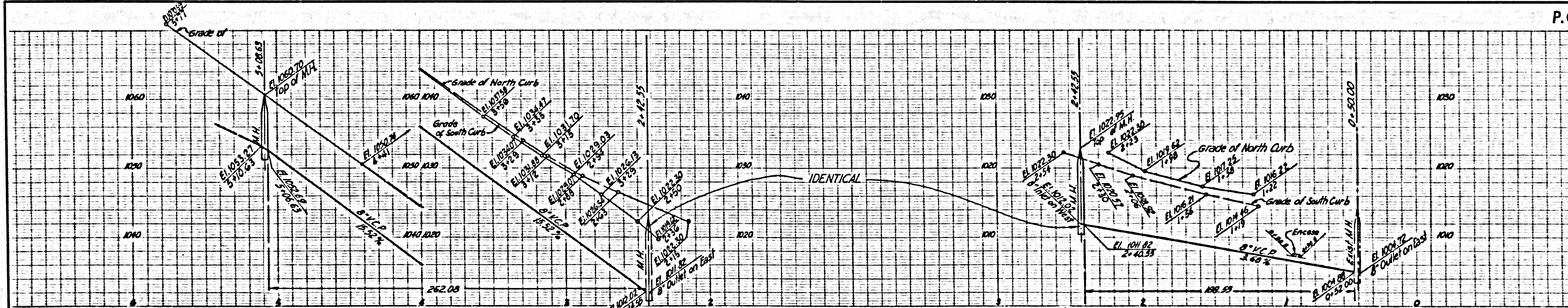
BY M. Williams OFFICE ENGINEER

CHECKED BY R.K. White 6-21-61

OFFICE OF COUNTY ENGINEER, BLDG. C. E. NO. 9406

Submitted Jack C. Lansing
PALOS VERDES - Centinela Valley Regional Engineer.

P.C. 5648 PAGE 2

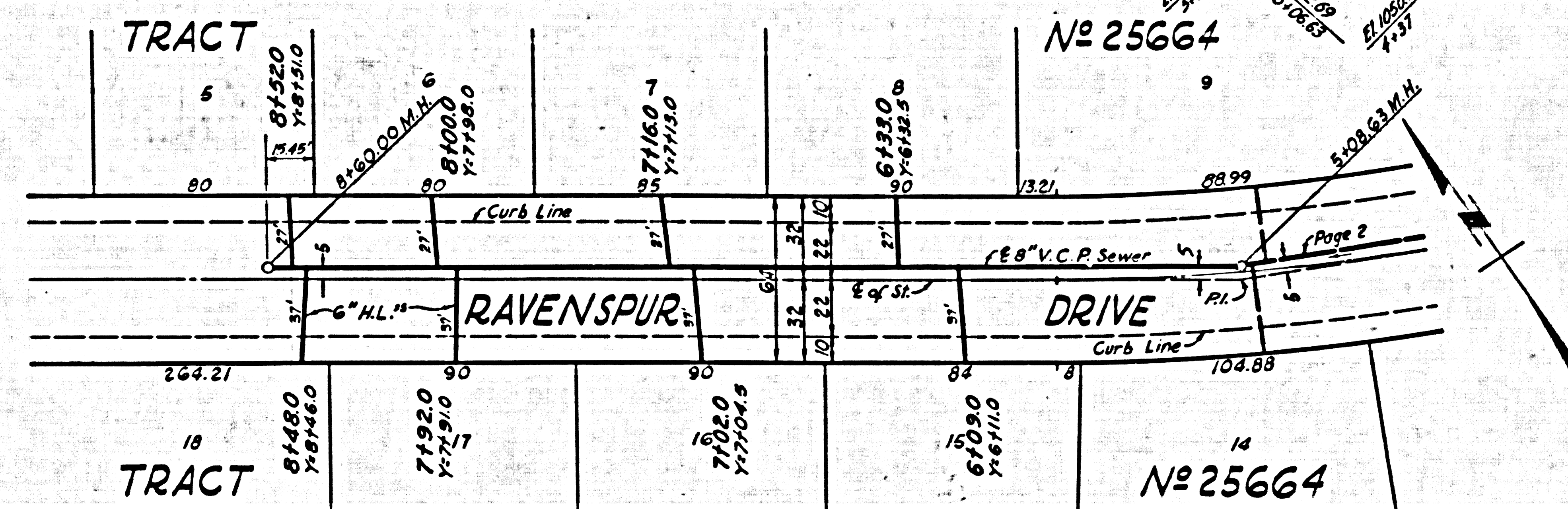
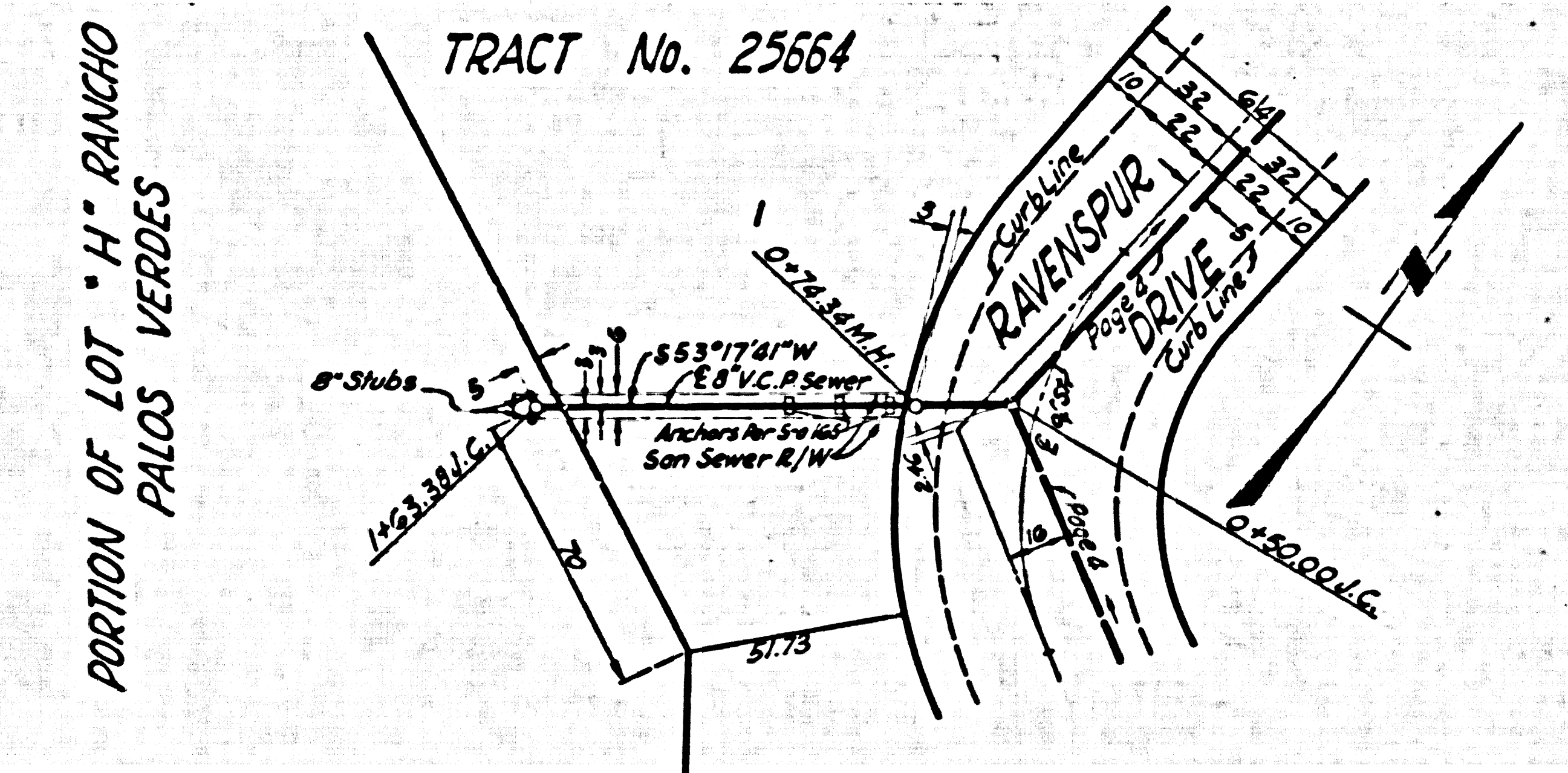
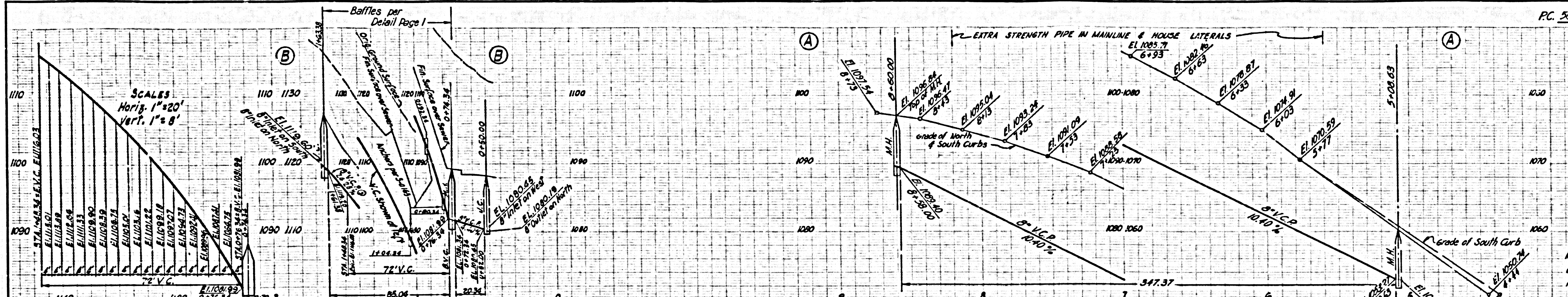


NO CHARGE FOR CONNECTIONS
DOUBLE SCALE

31190

DOUBLE SCALE
NO CHARGE FOR
CONNECTIONS

31191



DOUBLE SCALE
NO CHARGE FOR
CONNECTIONS

31192

