

INDEX MAP
TRACT NO. 24967
SCALE 1" = 500'
P.C. 5650 / J.N. 0354.39

NOTE:
NUMBERS IN CIRCLES
INDICATE PAGE NUMBERS

NORWALK BLDG. DIST. NO. 4-2

- NOTES:
1. PROVIDE STAKES ON THE PROPERTY LINE OR PROPERTY LINES PRODUCED AT RIGHT ANGLES TO THE SPWER LINE AT THE CENTER LINE OF EACH MANHOLE.
 2. NO REPRESENTATIVE OF THE COUNTY ENGINEER WILL SURVEY OR LAY OUT ANY PORTION OF THE WORK.
 3. THE OWNER OR HIS AUTHORIZED REPRESENTATIVE SHALL FURNISH THE COUNTY ENGINEER WITH GRADE SHEETS AND STATIONING FOR ALL HOUSE LATERALS AND Y BRANCHES AND SHALL PROVIDE STAKES FOR THEM AT THEIR PROPER LOCATIONS WITH STATIONING PLAINLY MARKED. ANY CHANGE IN LOCATION SHALL BE REQUESTED IN WRITING BY THE OWNER OR HIS REPRESENTATIVE.
 4. THE PRIVATE ENGINEER SHALL FURNISH THE HOUSE LATERAL DEPTH AT THE PROPERTY LINE BELOW THE TOP OF CURB ELEVATION FOR EACH HOUSE LATERAL ON THE GRADE SHEET.
 5. NO REVISIONS SHALL BE MADE IN THESE PLANS WITHOUT THE APPROVAL OF THE COUNTY ENGINEER.
 6. USE STANDARD MANHOLE FRAMES AND COVERS, 5-117.
 7. USE STANDARD STRENGTH PIPE EXCEPT AS NOTED.
 8. USE CEMENT MORTAR OR "WEDGE-LOCK" OR "SPREAD-LOCK" FOR ALL V.C.P. JOINTS PER SPEC., SECS. 36 & 42.
 9. RESURFACE ALL TRENCH WITHIN PAVED AREA TO MEET L.A. COUNTY ROAD DEPT. OR CALIF. STATE HIGHWAY REQUIREMENTS IN ACCORDANCE WITH PERMITS.
 10. ENCASE FOUR FEET OF SEWER AT POINTS OF INTERFERENCE WITH POLES OR WHEN COVER IS LESS THAN FOUR FEET PER S-8172 CODEBOOK AS NOTED.
 11. HOUSE LATERALS TO BE CONSTRUCTED WITH INVERTS AT PROPERTY LINE 4 FEET BELOW CURB GRADE EXCEPT AS NOTED.
 12. ALL STRUCTURES SHALL BE BRICK SEWER STRUCTURES, S-104.
 13. FOR ALLOWABLE LEAKAGE TEST USE FORMULA NO. 1, SPEC., SEC. 34.
 14. MANHOLE TOPS IN UNIMPROVED RIGHTS-OF-WAY TO BE SIX INCHES ABOVE FINISHED GRADE.
 15. THE CONTRACTOR SHALL NOTIFY THE CONSTRUCTION & STORM DRAIN DIVISION BY TELEPHONE, MADISON 5-470, EXT. 8155, AT LEAST TWENTY-FOUR HOURS BEFORE STARTING ANY WORK UNDER THIS CONTRACT.
 16. THE CONTRACTOR SHALL SATISFY HIMSELF OF ALL SUBSTRUCTURE AND SHALL BE RESPONSIBLE FOR THEIR LOCATION AND MAINTENANCE.
 17. NO CONSTRUCTION WILL BE PERMITTED IN FILLED AREAS UNLESS ACCEPTABLE CERTIFICATION IS SUBMITTED TO THE CONSTRUCTION DIVISION OF THE COUNTY ENGINEER'S DEPT. THAT CONSTRUCTION IS GREATER THAN 80%.
 18. IF CONSTRUCTION IS GREATER THAN 80% CASUALTY OF SPECIAL M.M. DUES ARE NOT REQUIRED. HOWEVER JOINT COMPOUND MUST BE SUBSTITUTED FOR CEMENT MORTAR FOR ALL JOINTS IN FILLED AREAS.
 19. IF CONSTRUCTION IS LESS THAN 80% THE SEWER MUST BE GRADED AS SHOWN ON PLANS UNDER S-8172.
 20. STANDARD SPECIFICATIONS DATED OCT. 10 1960, APPLY IN THE CONSTRUCTION OF THIS PROJECT.

NO CHARGE
FOR CONNECTIONS
Billing 37461

CONNECTIONS FOR THE DISPOSAL OF INDUSTRIAL WASTES SHALL BE MADE TO SEWERS SHOWN ON THESE DRAWINGS WITHOUT WRITTEN PERMISSION FROM THE CHIEF ENGINEER AND GENERAL MANAGER OF THE COUNTY SANITATION DISTRICTS.

PROFILE ALIGNMENT AND GRADE OF
SANITARY SEWERS
TO BE CONSTRUCTED IN
TRACT NO 24967

P.C. 5650
PAGE 1
JN 0354.39

PRIVATE CONTRACT NO. 5650

W.S. 34
3 SHEETS: 6 PAGES

SCALE: HORIZ. 1" = 40' VERT. 1" = 4'
SEPT. 1960
PREPARED IN THE OFFICES OF
McINTIRE & QUIROS INC.

By: *Alan Quiros* 11/2/60
REG. C. E. NO. 3242

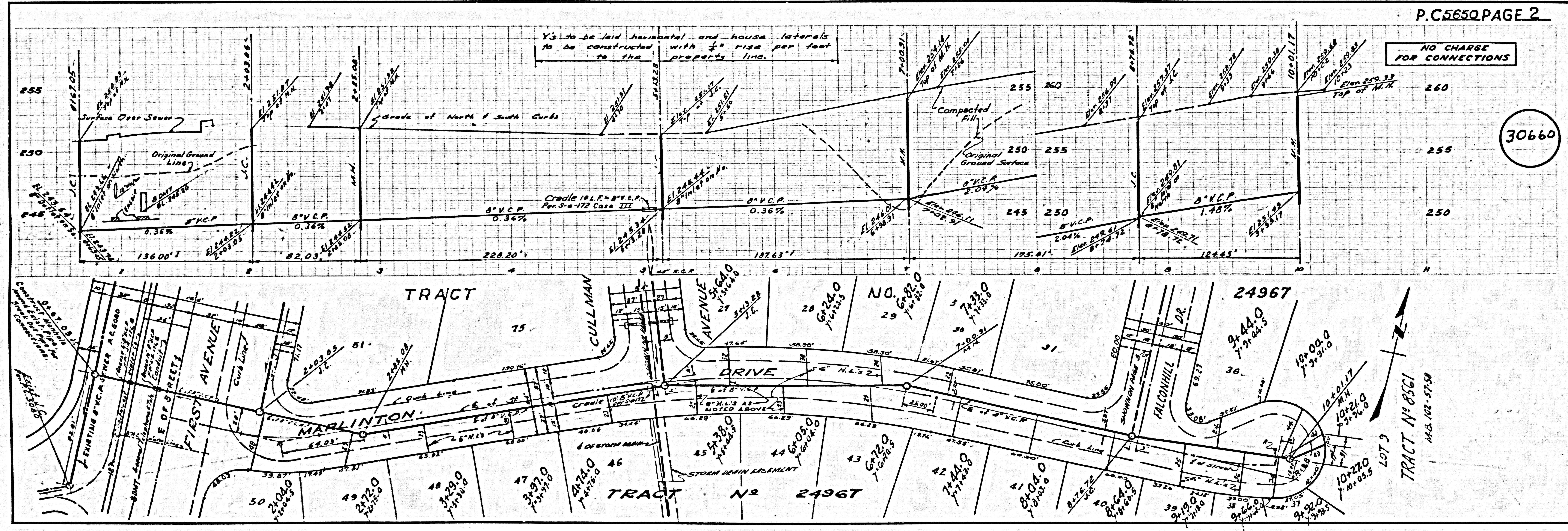
FOR LEGEND SEE PLAN NO. S-A-64

NOTES:
GRADES TO WHICH THIS IMPROVEMENT IS TO BE CONSTRUCTED ARE SHOWN ON PLANS AND PROFILES. GRADE POINTS FOR TOP OF CURB, CENTER LINE OF STREETS, OR CENTER LINE OF ALLEYS ARE SHOWN BY CIRCLES ON PROFILES. AT ALL POINTS BETWEEN DESIGNATED POINTS THE GRADE SHALL BE ESTABLISHED SO AS TO CONFORM TO A STRAIGHT LINE DRAWN BETWEEN SAID DESIGNATED POINTS.
ELEVATIONS ARE IN FEET ABOVE U.S.C. & G.S. SEA LEVEL DATUM OF 1929.
THIS DRAWING AND THE DATA HEREON ARE HEREBY MADE A PART OF THE SPECIFICATIONS.
WORK SHALL BE CONSTRUCTED ACCORDING TO SPECIFICATIONS ON FILE IN THE OFFICE OF THE COUNTY ENGINEER AND SHALL BE PROCEEDED ONLY IN THE PRESENCE OF THE COUNTY ENGINEER.
BEFORE WORK CAN BE STARTED THE CONTRACTOR MUST OBTAIN A PERMIT TO EXCAVATE IN COUNTY STREETS FROM THE L.A. COUNTY ROAD DEPT., DISTRICT OFFICE NO. 4 AND FROM THE COUNTY ENGINEER ROOM 301 C. E. BLDG. 108 W. 2ND ST., SUFFICIENT TO COVER THE COST OF CONSTRUCTION INSPECTION AND SECOND PLANS.
APPROVAL OF THIS PLAN BY THE COUNTY OF LOS ANGELES DOES NOT CONSTITUTE A REPRESENTATION AS TO THE ACCURACY OF THE LOCATION OF OR THE EXISTENCE OR NON-EXISTENCE OF ANY UNDERGROUND UTILITY PIPE. ON STRUCTURE WITHIN THE LIMITS OF THIS PROJECT THIS NOTE APPLIES TO ALL PAGES.
IF WORK IS TO BE DONE IN A STATE HIGHWAY, A PERMIT MUST BE OBTAINED FROM THE STATE OF CALIFORNIA, DIVISION OF HIGHWAYS, 128 SOUTH SPRING STREET.

COUNTY OF LOS ANGELES, CALIFORNIA.

APPROVED, JOHN A. LAMBIE, COUNTY ENGINEER
APPROVED, C. COMPTON, CHIEF ENGINEER
BY: *C.E. J...* ASST. SANITATION ENGINEER
BY: *J. Quiros* CHIEF ENGINEER
CHECKED BY: *J. Quiros* 8-18-60
OFFICE OF COUNTY ENGINEER, REG. C. E. NO. 3242

SUBMITTED BY: *John S. Eton* 5-30-61
LOS ANGELES REGIONAL ENGINEER REG. R & 3871

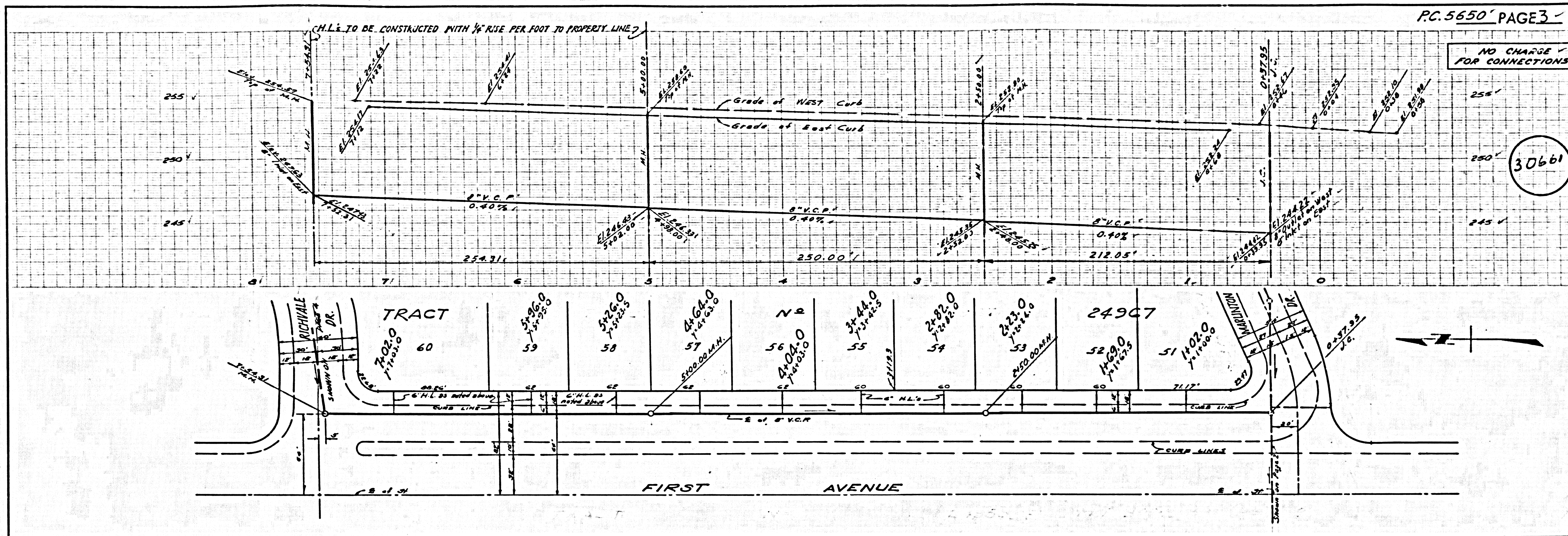


P.C. 5650 PAGE 2

NO CHARGE
FOR CONNECTIONS

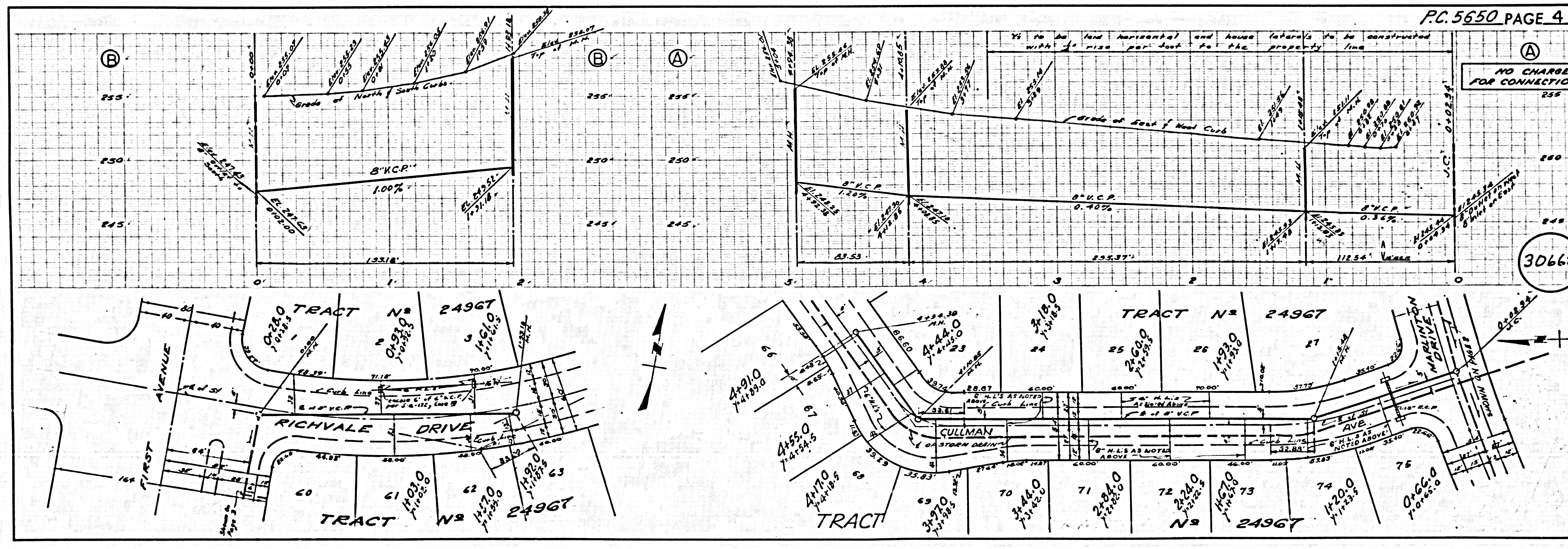
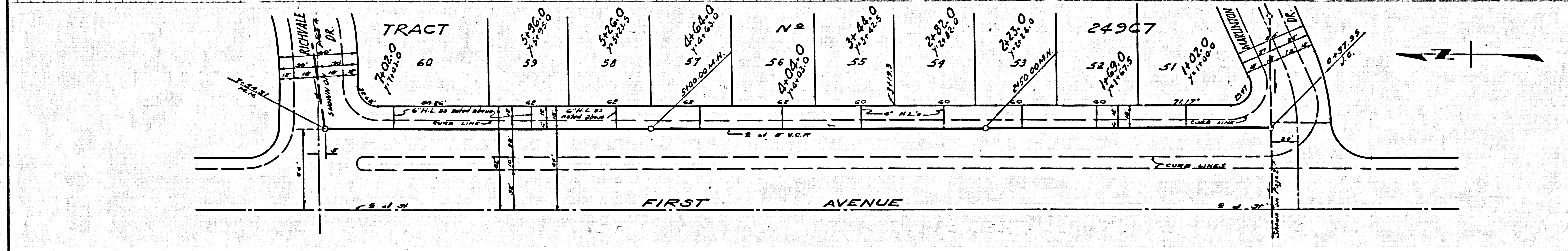
30660

TRACT NO. 8561
M.C. 102-57-58



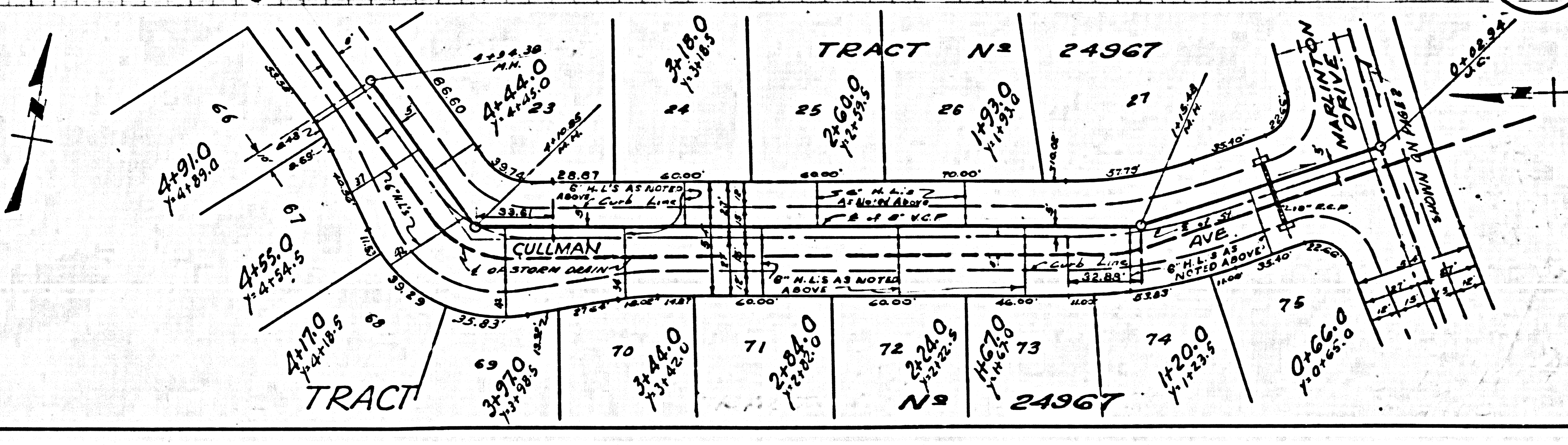
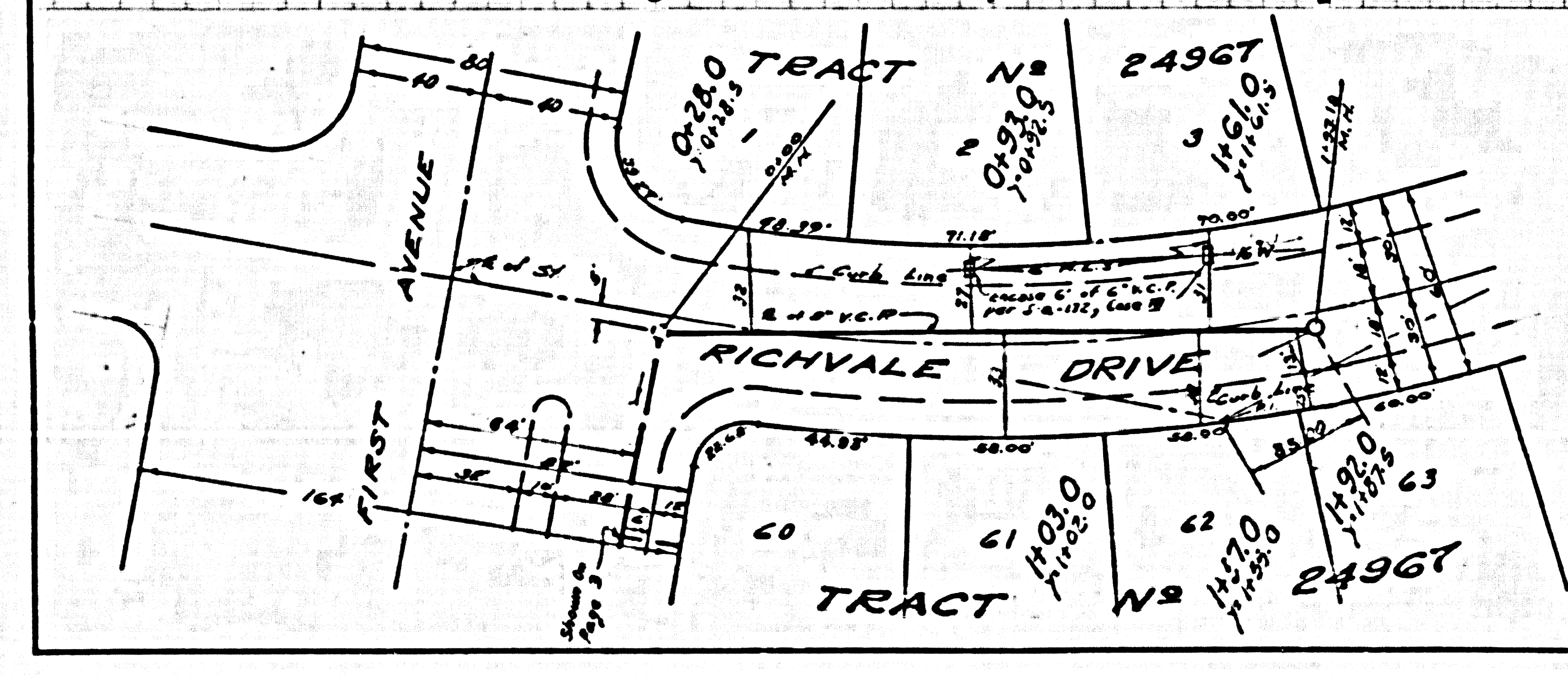
NO CHARGE FOR CONNECTIONS

30661



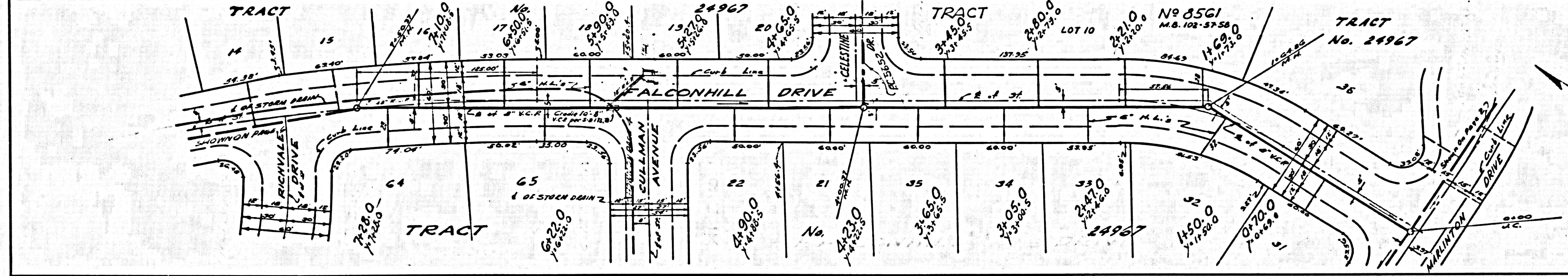
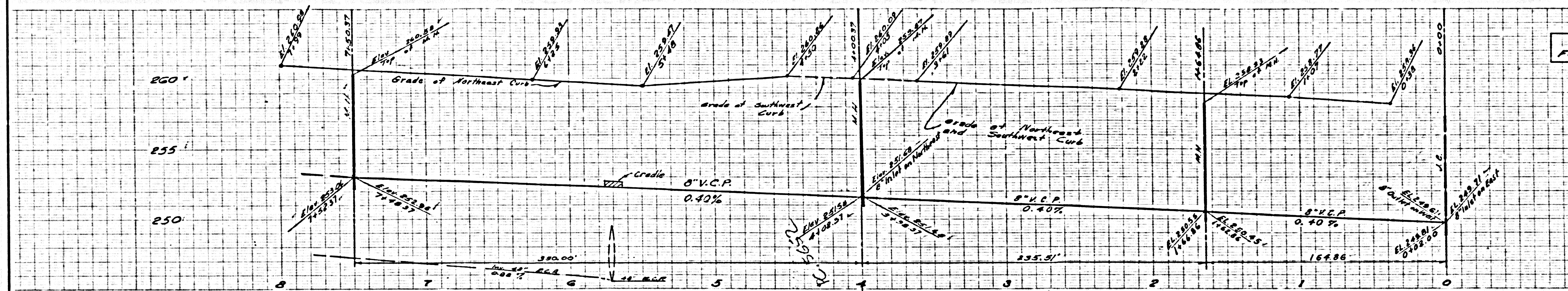
NO CHARGE FOR CONNECTIONS

30662



NO CHARGE FOR CONNECTIONS

30663



NO CHARGE FOR CONNECTIONS

30664

