

**PRIVATE CONTRACT NO. 5651**

W.S. 34  
 3 SHEETS, 5 PAGES  
 SCALE: VERT. 1"=4' HORIZ. 1"=40'  
 NOV. 1, 1960  
 PREPARED IN THE OFFICE OF  
**McINTIRE & QUIROS INC.**  
 BY: *John Quiros 11/5/60*  
 REG. C. E. NO. 3228  
 FOR LEGEND SEE PLAN NO. S-A-64

30640

**NORWALK BLDG. DIST. NO. 4-2**

- NOTES
1. PROVIDE STAKES ON THE PROPERTY LINE OR PROPERTY LINES PRODUCED AT RIGHT ANGLES TO THE SEWER LINE AT THE CENTER LINE OF EACH MANHOLE.
  2. NO REPRESENTATIVE OF THE COUNTY ENGINEER WILL SURVEY OR LAY OUT ANY PORTION OF THE WORK.
  3. THE OWNER OR HIS AUTHORIZED REPRESENTATIVE SHALL FURNISH THE COUNTY ENGINEER WITH GRADE SHEETS AND STATIONING FOR ALL HOUSE LATERALS AND Y BRANCHES AND SHALL PROVIDE STAKES FOR THEM AT THEIR PROPER LOCATIONS WITH STATIONING PLAINLY MARKED. ANY CHANGE IN LOCATION SHALL BE REQUESTED IN WRITING BY THE OWNER OR HIS REPRESENTATIVE.
  4. THE PRIVATE ENGINEER SHALL FURNISH THE HOUSE LATERAL DEPTH AT THE PROPERTY LINE BELOW THE TOP OF CURB ELEVATION FOR EACH HOUSE LATERAL ON THE GRADE SHEET.
  5. NO REVISIONS SHALL BE MADE IN THESE PLANS WITHOUT THE APPROVAL OF THE COUNTY ENGINEER.
  6. USE STANDARD MANHOLE FRAMES AND COVERS, S-117.
  7. USE STANDARD STRENGTH PIPE EXCEPT AS NOTED.
  8. USE CEMENT PORTLAND OR "WEDGE-LOCK" OR "SPREAD-SEAL" FOR ALL V.C.P. JOINTS PER SPECS., SECT. 26 & 48.
  9. RESURFACE ALL TRENCH WITHIN PAVED AREA TO MEET L.A. COUNTY ROAD DEPT. OR CALIF. STATE HIGHWAY REQUIREMENTS IN ACCORDANCE WITH PERMITS.
  10. EXPOSE FOUR FEET OF SEWER AT POINTS OF INTERFERENCE WITH POLES, OR WHEN COVER IS LESS THAN FOUR FEET, FOR A 4'-10" CHASE.
  11. HOUSE LATERALS TO BE CONSTRUCTED WITH INVERTS AT PROPERTY LINE 6" FEET BELOW CURB GRADE EXCEPT AS NOTED.
  12. ALL STRUCTURES SHALL BE BRICK SEWER STRUCTURES, S-114.
  13. FOR ALLOWABLE LEAKAGE TEST USE FORMULA NO. 1, SPECS., SEC. 34.
  14. MANHOLE TOPS IN UNIMPROVED RIGHTS-OF-WAY TO BE SIX INCHES ABOVE FINISHED GRADE.
  15. THE CONTRACTOR SHALL NOTIFY THE CONSTRUCTION DIVISION BY TELEPHONE, HANSON 5-410, EXT. 8151 AT LEAST TWENTYFOUR HOURS BEFORE STARTING ANY WORK UNDER THIS CONTRACT.
  16. THE CONTRACTOR SHALL SATISFY ALL REQUIREMENTS OF ALL SUBSTRUCTURES AND SHALL BE RESPONSIBLE FOR THEIR LOCATION AND MAINTENANCE.
  17. NO CONSTRUCTION WILL BE PERMITTED IN FILLED AREAS UNLESS ACCEPTABLE CERTIFICATION IS SUBMITTED TO THE CONSTRUCTION DIVISION OF THE COUNTY ENGINEER DEPT. THE CONSTRUCTION IS GREATER THAN 30%.
  18. IF COMPLETION IS GREATER THAN 30%, CRADLING OR SPECIAL P.A. BASES ARE NOT REQUIRED, HOWEVER JOINT COMPOUND MUST BE SUBSTITUTED FOR CEMENT MORTAR FOR ALL JOINTS IN FILLED AREAS.
  19. IF COMPLETION IS LESS THAN 30%, THE SEWER MUST BE CRADLED AS SHOWN ON PLANS (PER S-1-152).
  20. STANDARD SPECIFICATIONS DATED OCT. 10, 1951, APPLY IN THE CONSTRUCTION OF THIS PROJECT.

NOTES

GRADES TO WHICH THIS IMPROVEMENT IS TO BE CONSTRUCTED ARE SHOWN ON PLANS AND PROFILES. GRADE POINTS FOR TOP OF CURB, CENTER LINE OF STREETS, OR CENTER LINE OF ALLEYS ARE SHOWN BY CIRCLES OR TRIANGLES AT ALL POINTS BETWEEN DESIGNATED POINTS THE GRADE SHALL BE ESTABLISHED SO AS TO CONFORM TO A STRAIGHT LINE BETWEEN SAID DESIGNATED POINTS.

ELEVATIONS ARE IN FEET ABOVE U.S.C. & G.S. SEA LEVEL, DATUM OF 1929.

THE DRAWINGS AND THE DATA HEREON ARE HEREBY MADE A PART OF THE SPECIFICATIONS.

WORK SHALL BE CONSTRUCTED ACCORDING TO SPECIFICATIONS ON FILE IN THE OFFICE OF THE COUNTY ENGINEER AND SHALL BE PROSECUTED ONLY IN THE PRESENCE OF THE COUNTY ENGINEER OR HIS REPRESENTATIVE.

BEFORE WORK CAN BE STARTED, THE CONTRACTOR MUST OBTAIN A PERMIT TO BRCAVATE IN COUNTY STREETS FROM THE L.A. COUNTY ROAD DEPT., DISTRICT OFFICE NO. 4, AND PAY A FEE WITH THE COUNTY ENGINEER, ROOM 219, 215 S. 4TH ST., LOS ANGELES, CALIF. 90012, SUBJECT TO COVER THE COST OF CONSTRUCTION INSPECTION AND RECORD PLANS.

APPROVAL OF THIS PLAN BY THE COUNTY OF LOS ANGELES DOES NOT CONSTITUTE A REPRESENTATION AS TO THE ACCURACY OF THE LOCATION OF OR THE EXISTENCE OR NON-EXISTENCE OF ANY UNDERGROUND UTILITY PIPE, OR STRUCTURE WITHIN THE LIMITS OF THIS PROJECT. THIS NOTE APPLIES TO ALL PAGES.

IF WORK IS TO BE DONE IN A STATE HIGHWAY, A PERMIT MUST BE OBTAINED FROM THE STATE OF CALIFORNIA, DIVISION OF HIGHWAYS, 120 SOUTH SPRING STREET.

**COUNTY OF LOS ANGELES, CALIFORNIA**

APPROVED, JOHN A. LAMBE, COUNTY ENGINEER

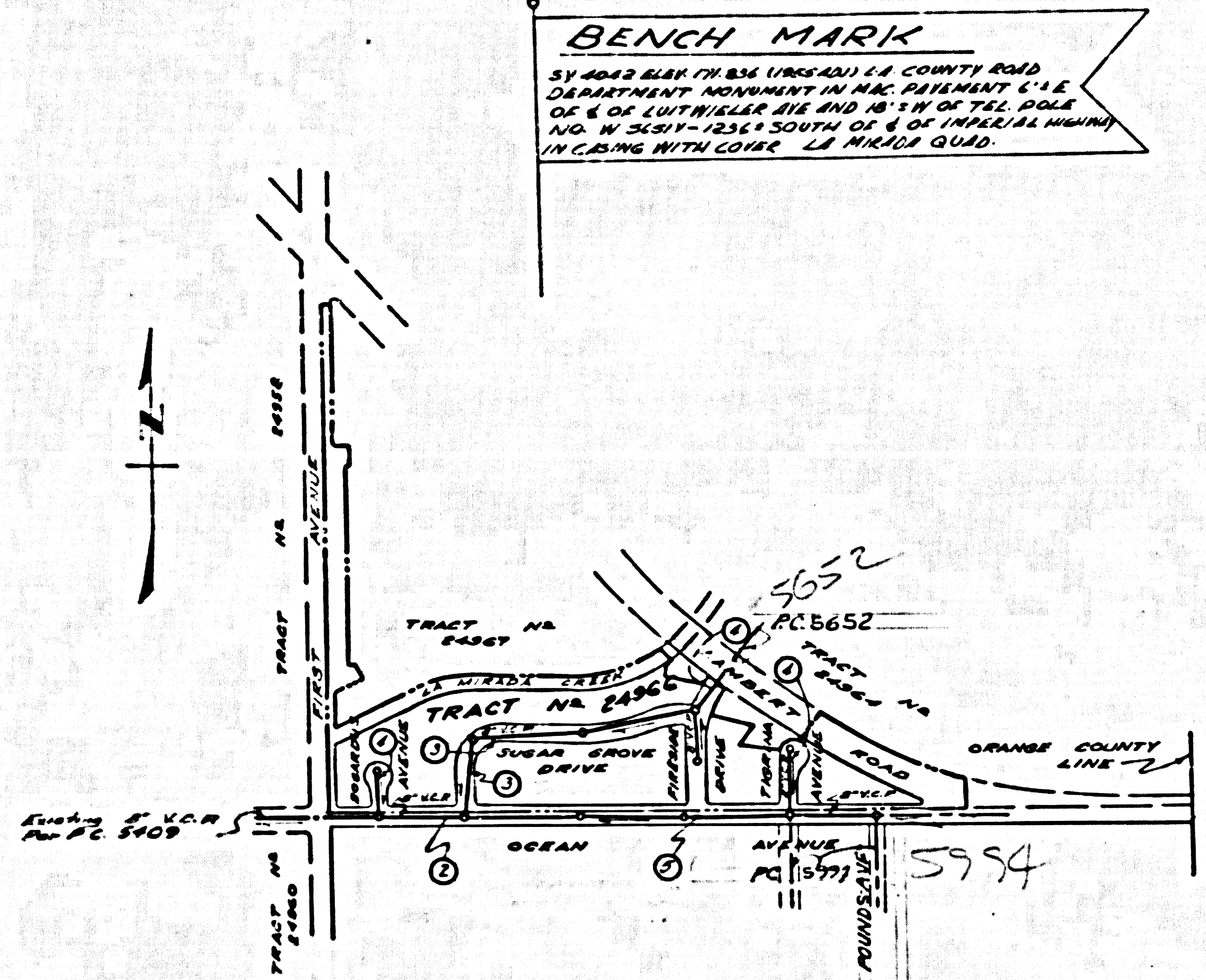
APPROVED, C.E. COMPAGNON, CHIEF ENGINEER

BY: *C.E. Compagnon* COUNTY ENGINEER

CHECKED BY: *John Quiros 11-5-60* OFFICE OF COUNTY ENGINEER, BLDG. C. E. NO. 3404

SUBMITTED BY: *John Quiros 11-5-60* 195 CAROLINA AVE. LOS ANGELES 240 P.O. BOX 3871

NO CONNECTIONS FOR THE DISPOSAL OF INDUSTRIAL WASTES SHALL BE MADE TO SEWERS SHOWN ON THESE DRAWINGS WITHOUT WRITTEN PERMISSION FROM THE CHIEF ENGINEER AND GENERAL MANAGER OF THE COUNTY SANITATION DISTRICTS.



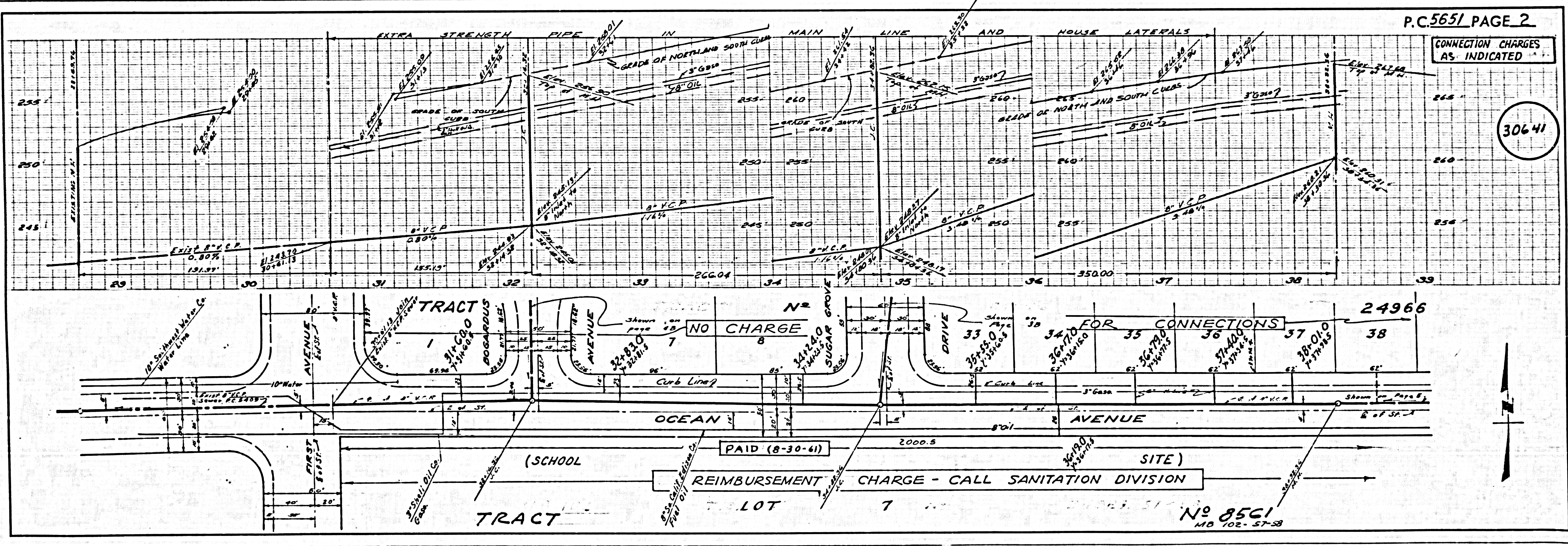
**INDEX MAP**  
 TRACT NO. 24966  
 SCALE 1"=400'  
 P.C. 5651 J.N. 0354.40

NOTE: Numbers in circles indicate page numbers

**REVISION**  
 ELIMINATE CONSTRUCTION ON OCEAN AVENUE EAST OF STA. 47+4.34.  
 BY: *J.K. Oude 4-25-61*  
 OFFICE OF COUNTY ENGINEER, R.E. NO. 3404

**REVISION**  
 RELOCATE 3" GAS LINE ON PAGES 2, 3, 4, & 5, IN PLAN AND PROFILE.  
 BY: *J.K. Oude* DATE: 4-25-61  
 OFFICE OF COUNTY ENGINEER, R.E. NO. 3404

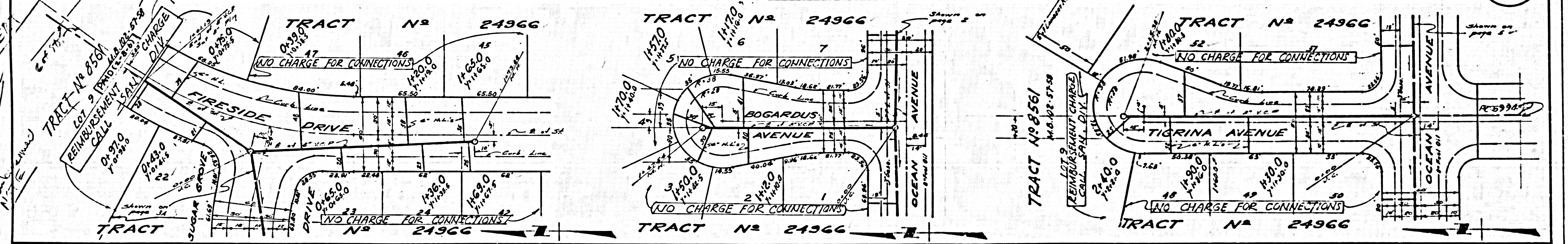
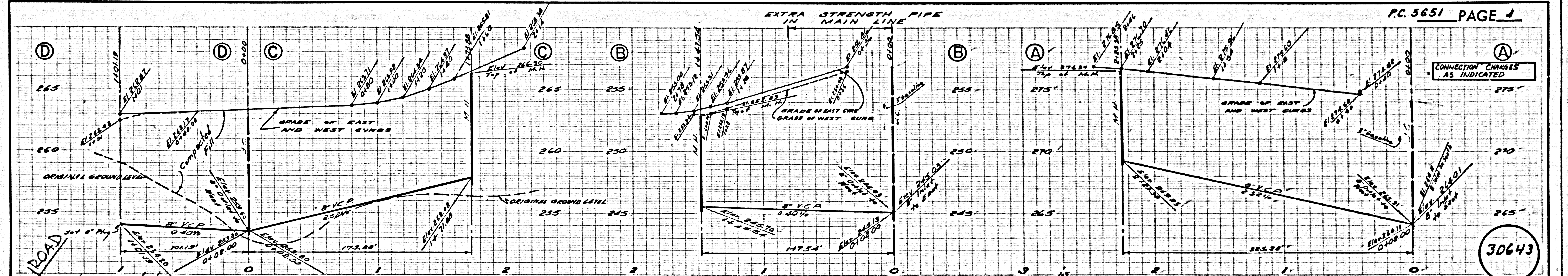
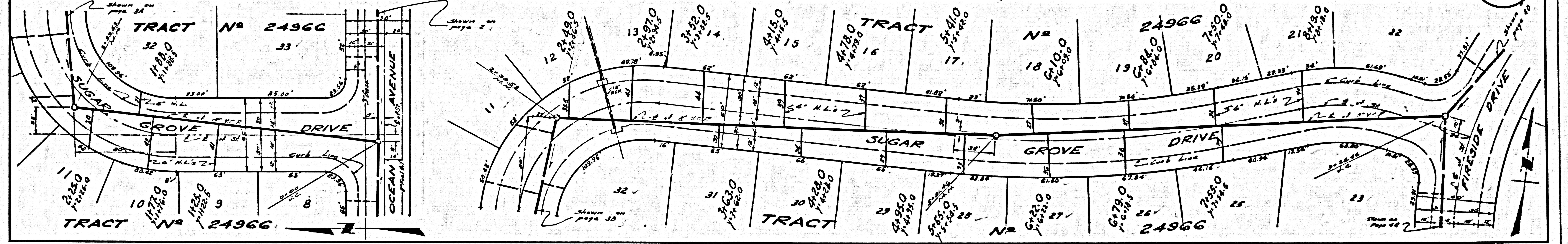
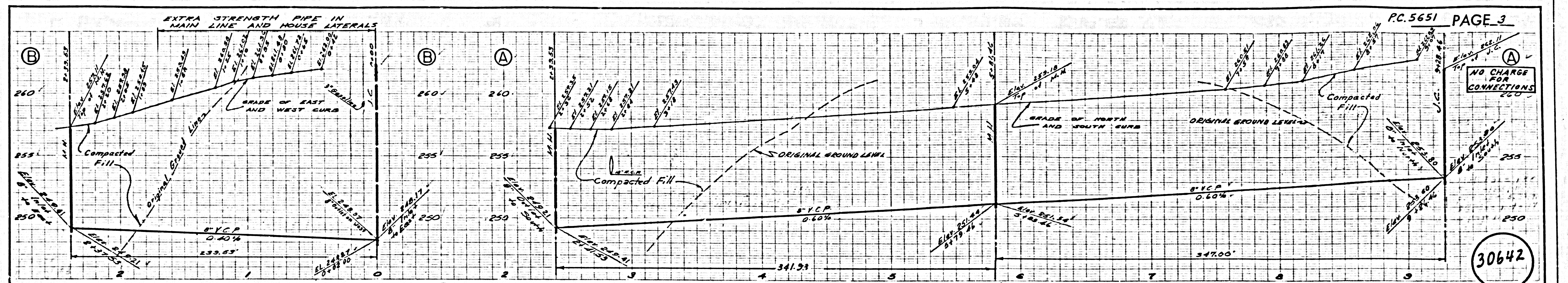
**CONNECTION CHARGES**  
 AS INDICATED  
*R. King 2-27-61*



CONNECTION CHARGES AS INDICATED

30641

NO 8561  
 NO 102-57-38



PC 5652  
Chal Down  
LAMBREY

