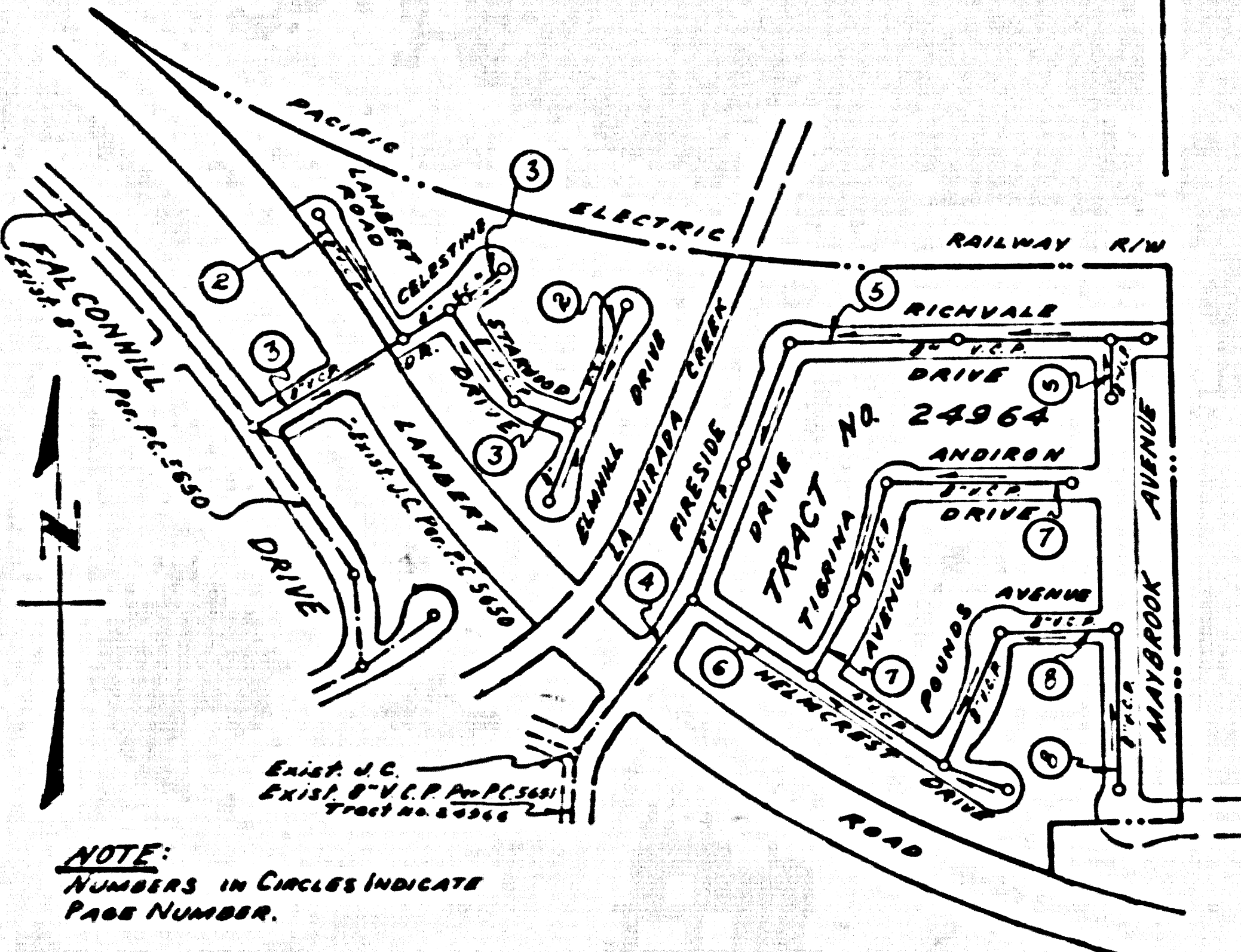


**BENCH MARK**  
 SY 4042, EL. 171.036 (1955 ADJ. L.A. COUNTY ROAD DEPT. MAN. IN ACC. PAVEMENT 6" E. of EOP LUTHWILER AV. AND 18" S. W. of TEL. POLE NO. W-5651Y 1236' S. of IMPER. HWY. IN CASINO WITH COVER LA MIRADA QUAD.

**NORWALK BLDG. DIST. NO. 4.2**

PROFILE ALIGNMENT AND GRADE OF **P.C. 5652**  
**SANITARY SEWERS PAGE 1**  
 TO BE CONSTRUCTED IN  
**TRACT NO. 24964**  
 J.N. 0354.41



- NOTE:**
1. Lots 126-128 Served by house laterals shown on Tract No. 24966, P.C. 5651, Pg. 6.
  2. Lots 129-131 Served by house laterals on Pg. 2. Lots 132-135 shown on page 5, Tract No. 24967, P.C. 5650
  3. Lot 136, a Water Co. Pump Site, is not served. See letter of June 27, 1961 from Southland Water Co. in file.
  4. Lots 137 & 138 are future School Sites.

- NOTES:**
1. PROFILE STAKES ON THE PROPERTY LINE OR PROPERTY LINES PRODUCED AT RIGHT ANGLES TO THE SEWER LINE AT THE CENTER LINE OF EACH MANHOLE.
  2. NO REPRESENTATIVE OF THE COUNTY ENGINEER WILL SURVEY OR LAY OUT ANY PORTION OF THE WORK.
  3. THE OWNER OR HIS AUTHORIZED REPRESENTATIVE SHALL FURNISH THE COUNTY ENGINEER WITH GRADE SHEETS AND STATIONING FOR ALL HOUSE LATERALS AND Y BRANCHES AND SHALL PROVIDE STAKES FOR THEM AT THEIR PROPER LOCATIONS WITH STATIONING PLAINLY MARKED. ANY CHANGE IN LOCATION SHALL BE REQUESTED IN WRITINGS BY THE OWNER OR HIS REPRESENTATIVE.
  4. THE PRIVATE ENGINEER SHALL FURNISH THE HOUSE LATERAL DEPTH AT THE PROPERTY LINE BELOW THE TOP OF CURB ELEVATION FOR EACH HOUSE LATERAL ON THE GRADE SHEET.
  5. NO REVISIONS SHALL BE MADE IN THESE PLANS WITHOUT THE APPROVAL OF THE COUNTY ENGINEER.
  6. USE STANDARD MANHOLE FRAMES AND COVERS, 5-17T.
  7. USE STANDARD STRENGTH PIPE EXCEPT AS NOTED.
  8. USE CEMENT MORTAR OR "WEDGE-LOCK" OR "TREAD-SEAL" FOR ALL T.C.P. JOINTS PER SPEC., SECT. 36 & 46.
  9. REINFORCE ALL TRENCH WITHIN RATED AREA TO MEET L.A. COUNTY ROAD DEPT. OR CALIF. STATE HIGHWAY REQUIREMENTS IN ACCORDANCE WITH PERMITS.
  10. ENCASE FOUR FEET OF SEWER AT POINTS OF INTERFERENCE WITH POLES, OR WHEN COVER IS LESS THAN FOUR FEET. PER: S-4-178 CASE III
  11. HOUSE LATERALS TO BE CONSTRUCTED WITH INVERTS AT PROPERTY LINE 6" FEET BELOW CURB GRADE.
  12. ALL STRUCTURES SHALL BE BRICK SEWER STRUCTURES, 5-10A.
  13. FOR ALLOWABLE LEAKAGE TEST USE FORMULA NO. 1 SPEC., SEC. 84.
  14. MANHOLE TOPS IN UNIMPROVED RIGHTS-OF-WAY TO BE SIX INCHES ABOVE FINISHED GRADE.
  15. THE CONTRACTOR SHALL NOTIFY THE CONSTRUCTION DIVISION BY TELEPHONE, MADRON 5-447, EXT. 8151 AT LEAST TWENTY-FOUR HOURS BEFORE STARTING ANY WORK UNDER THIS CONTRACT.
  16. THE CONTRACTOR SHALL SATISFY HIMSELF OF ALL SUBSTRUCTURES AND SHALL BE RESPONSIBLE FOR THEIR LOCATION AND MAINTENANCE.
  17. A. NO CONSTRUCTION WILL BE PERMITTED IN FILLED AREAS UNLESS ACCEPTABLE CERTIFICATION IS SUBMITTED TO THE CONSTRUCTION DIVISION OF THE COUNTY ENGINEER, DEPT. THAT CONSTRUCTION IS GREATER THAN 80%.  
 B. IF CONSTRUCTION IS GREATER THAN 80%, CRADLING OR SPECIAL M.A. BASES ARE NOT REQUIRED. HOWEVER JOINT COMPOUND MUST BE SUBSTITUTED FOR CEMENT MORTAR FOR ALL JOINTS IN FILLED AREAS.  
 C. IF CONSTRUCTION IS LESS THAN 80%, THE SEWER MUST BE CRADLED AS SHOWN ON PLANS (PER: S-4-164)
  18. STANDARD SPECIFICATIONS DATED JAN. 1, 1960 APPLY IN THE CONSTRUCTION OF THIS PROJECT.

**PRIVATE CONTRACT NO. 5652**  
 W.S. 34  
 4 SHEETS; 8 PAGES  
 SCALE: VERT. 1"=4' HORIZ. 1"=40' SEPT. 1960  
 PREPARED IN THE OFFICES OF  
**MCINTIRE & QUIROS, INC.**  
 BY: *Oliver McIntire* 11/3/60 REG. C. E. NO. 2828  
 FOR LEGEND SEE PLAN NO. S-A-44

**NOTE:**  
 GRADES TO WHICH THIS IMPROVEMENT IS TO BE CONSTRUCTED ARE SHOWN ON PLANS AND PROFILE GRADE POINTS FOR TOP OF CURBS, CENTER LINE OF STREETS OR CENTER LINE OF ALLEYS ARE SHOWN BY CIRCLES ON PROFILES. AT ALL POINTS BETWEEN DESIGNATED POINTS THE GRADE SHALL BE ESTABLISHED SO AS TO CONFORM TO A STRAIGHT LINE DRAWN BETWEEN SAID DESIGNATED POINTS.  
 ELEVATIONS ARE IN FEET ABOVE U.S.C. & G.S. SEA LEVEL DATUM OF 1929.  
 THIS DRAWING AND THE DATA HEREON ARE HEREBY MADE A PART OF THE SPECIFICATIONS.  
 WORK SHALL BE CONSTRUCTED ACCORDING TO SPECIFICATIONS ON FILE IN THE OFFICE OF THE COUNTY ENGINEER AND SHALL BE PROSECUTED ONLY IN THE PRESENCE OF THE COUNTY ENGINEER.  
 BEFORE WORK CAN BE STARTED THE CONTRACTOR MUST OBTAIN A PERMIT TO LOCATE IN COUNTY STREETS FROM THE L.A. COUNTY ROAD DEPT., DISTRICT OFFICE NO. 4 AND PAY A FEE WITH THE COUNTY ENGINEER ROOM 301 CO. ENGR. BLDG., 108 W. 2<sup>ND</sup> STREET, SUFFICIENT TO COVER THE COST OF CONSTRUCTION INSPECTION AND SECOND PLANS.  
 APPROVAL OF THIS PLAN BY THE COUNTY OF LOS ANGELES DOES NOT CONSTITUTE A REPRESENTATION AS TO THE ACCURACY OF THE LOCATION OR THE EXISTENCE OR NON-EXISTENCE OF ANY UNDERGROUND UTILITIES PIPE, OR STRUCTURE WITHIN THE LIMITS OF THIS PROJECT. THIS NOTE APPLIES TO ALL PAGES.  
 IF WORK IS TO BE DONE IN A STATE HIGHWAY, A PERMIT MUST BE OBTAINED FROM THE STATE OF CALIFORNIA, DIVISION OF HIGHWAYS, 128 SOUTH SPRING STREET.

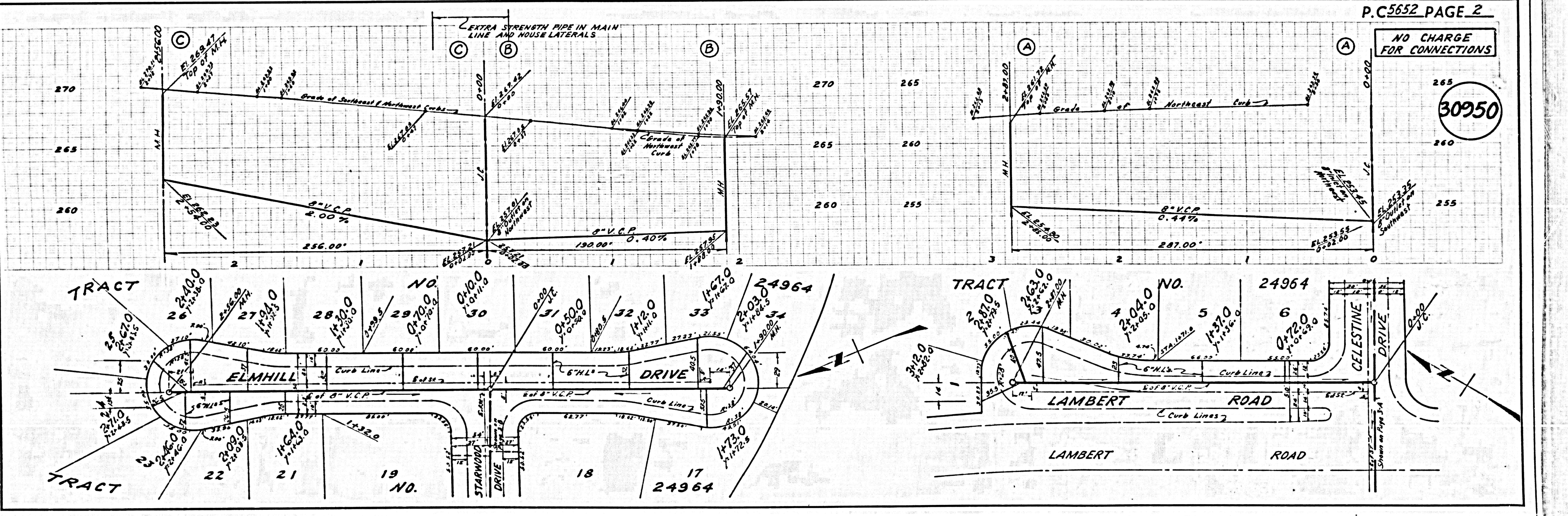
**INDEX MAP**  
 TRACT NO. 24964  
 SCALE 1" = 300'  
 P.C. 5652 J.N. 0354.41

**REVISION**  
 REVISED GRADES BETWEEN STA. 3+00.00 & STA. 4+00.00 AND ADDED MANHOLE AT STA. 3+05.00 ON CELESTINE DRIVE.  
 BY: *Oliver McIntire*  
 OFFICE OF COUNTY ENGINEER

**NO CHARGE FOR CONNECTIONS**  
*Oliver McIntire*

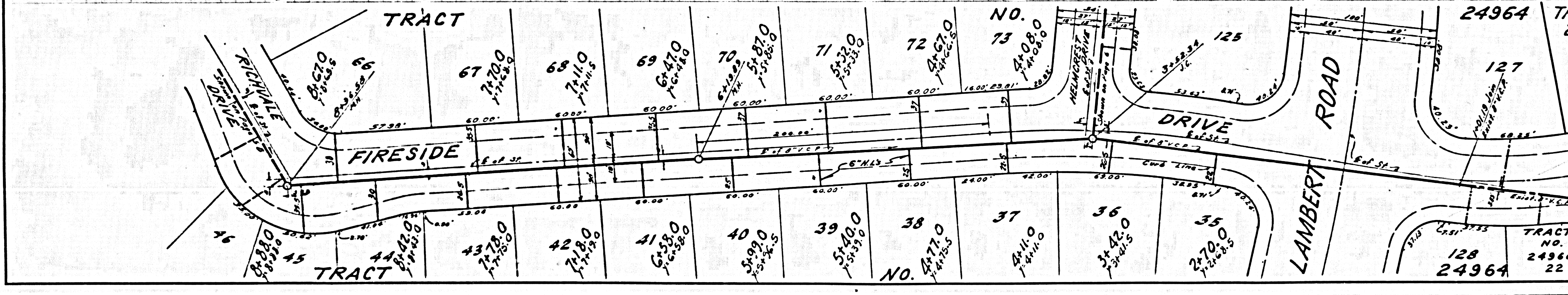
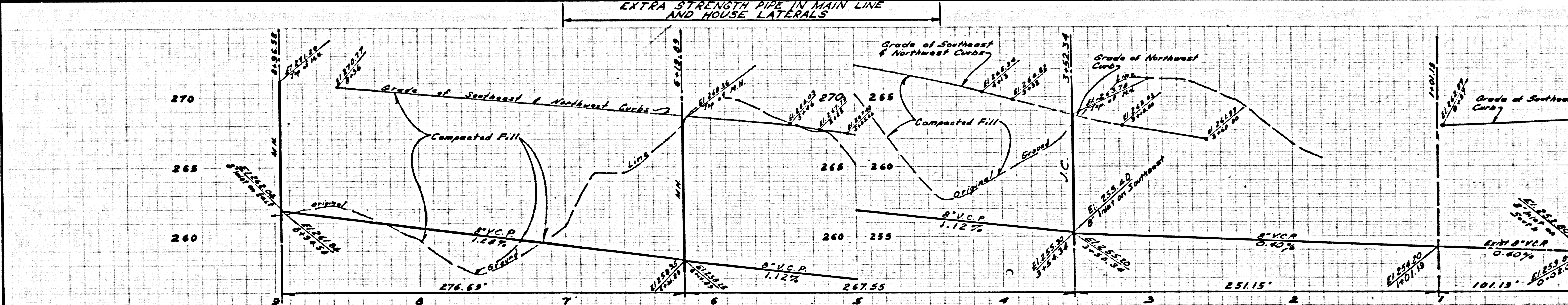
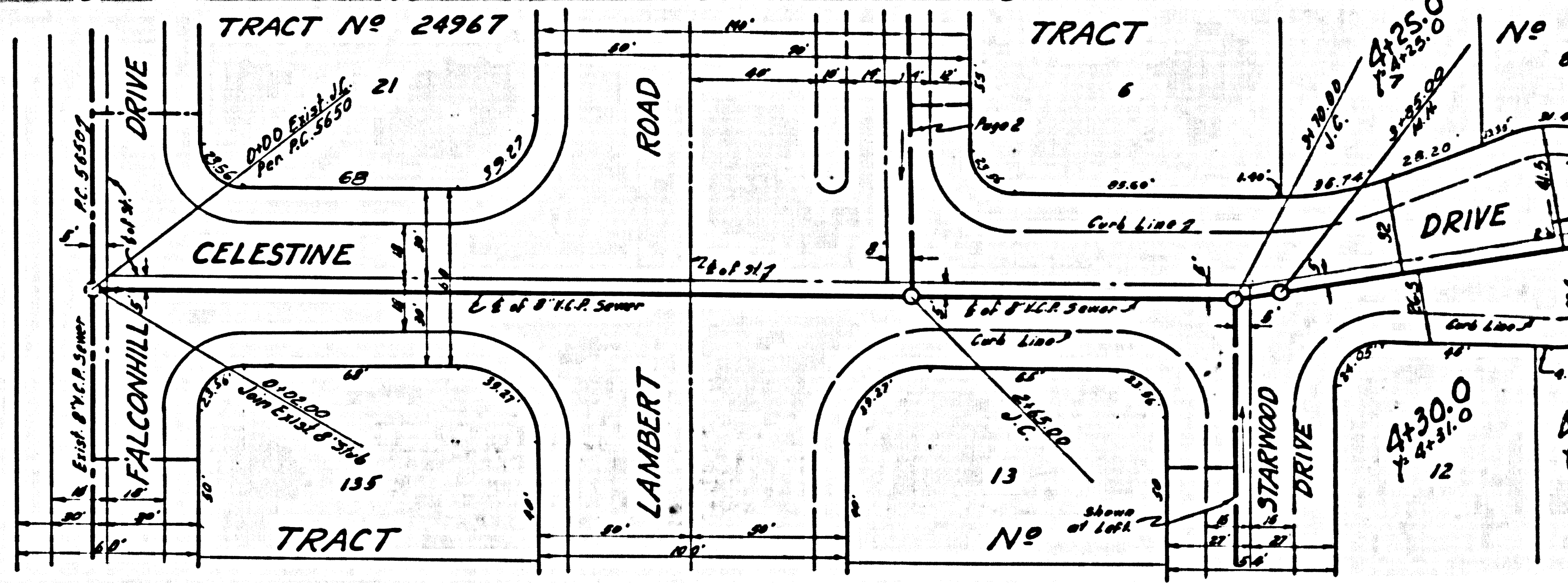
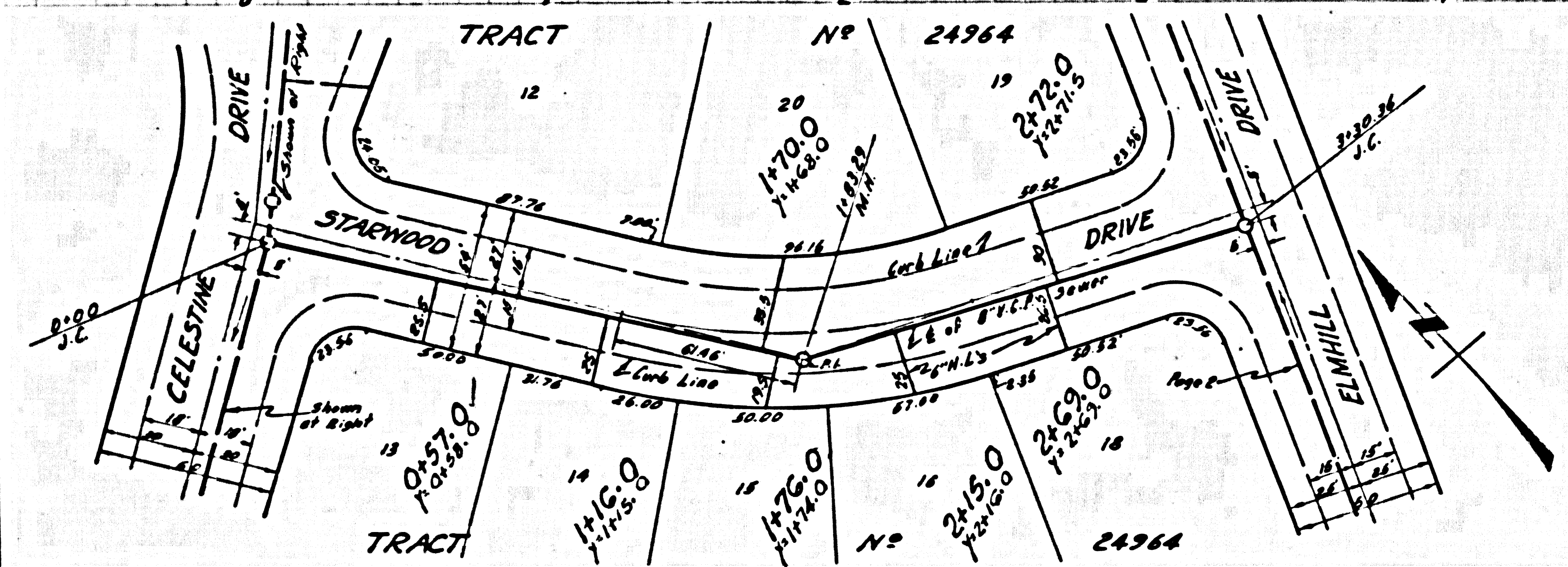
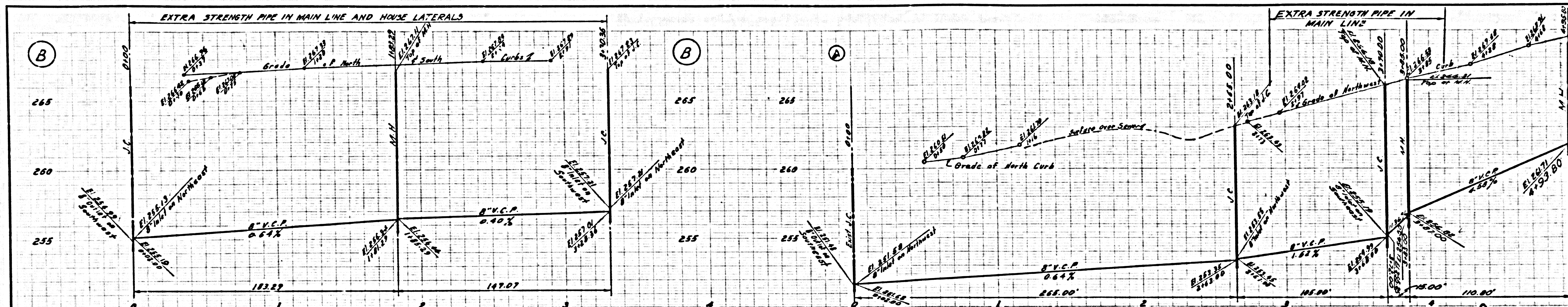
NO CONNECTIONS FOR THE DISPOSAL OF INDUSTRIAL WASTES SHALL BE MADE TO SEWERS SHOWN ON THESE DRAWINGS WITHOUT WRITTEN PERMISSION FROM THE CHIEF ENGINEER AND GENERAL MANAGER OF THE COUNTY SANITATION DISTRICTS.

COUNTY OF LOS ANGELES, CALIFORNIA  
 APPROVED, **JOHN A. LAMBIE**, COUNTY ENGINEER APPROVED, **C. R. CAMPBELL**, CHIEF ENGINEER  
 CO. SAN. DIST. NO. 18  
 BY: *C. E. Mendenhall* ASST. SANITATION ENGINEER BY: *P. H. Burns* CHIEF ENGINEER  
 CHECKED BY: *SK. D. D. D.* OFFICE ENGINEER  
 OFFICE OF COUNTY ENGINEER, Rm. C. E. NO. 5485  
 SUBMITTED BY: *John L. Carter* 5-19-61  
 L.A. CERRITOS REGIONAL ENGINEER, REG. R.E. 3871



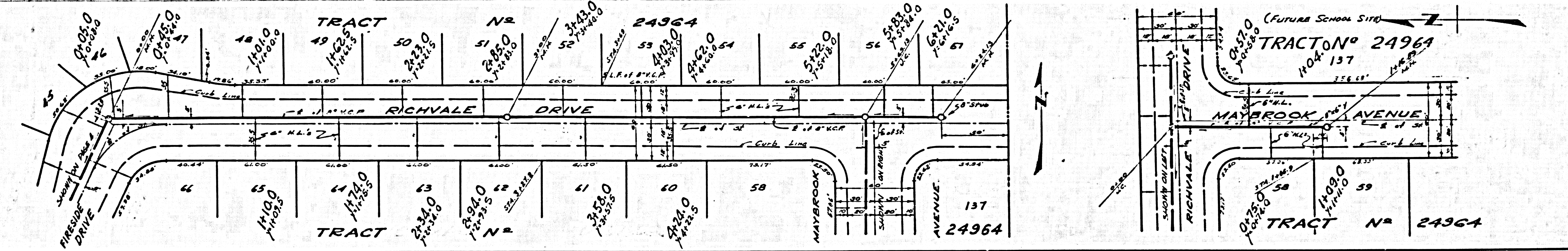
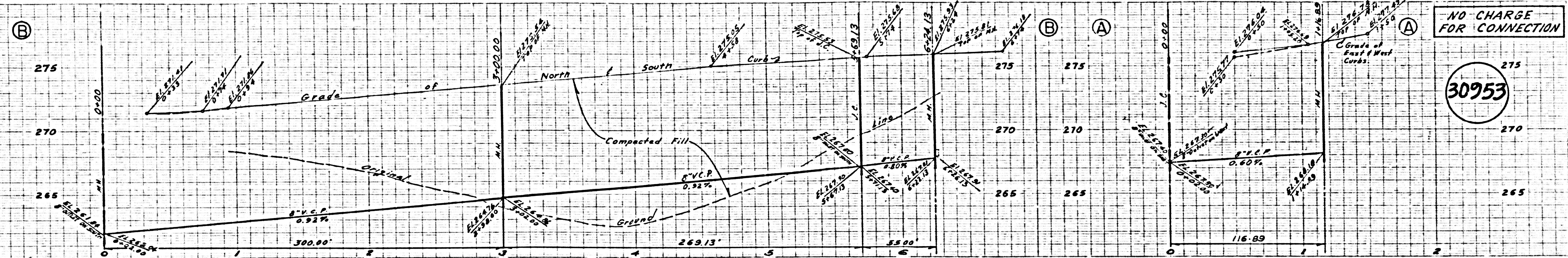
P.C. 5652 PAGE 2

**NO CHARGE FOR CONNECTIONS**  
 30950



NO CHARGE FOR CONNECTION

30953



NO CHARGE FOR CONNECTION

30954

