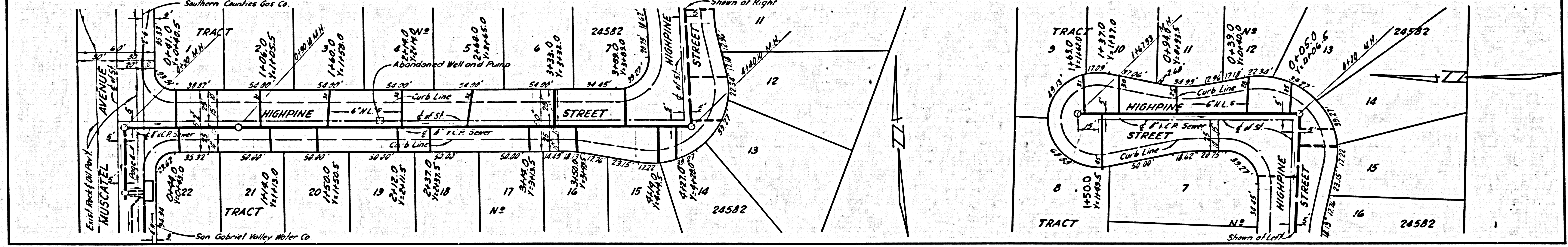
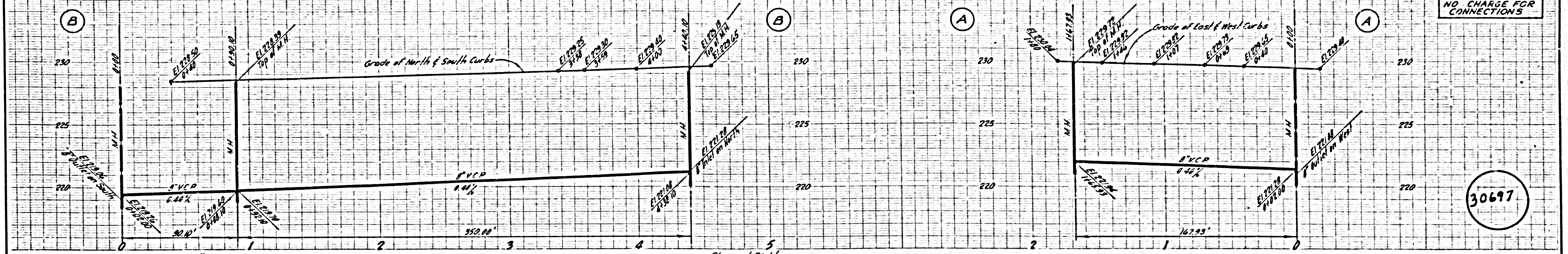
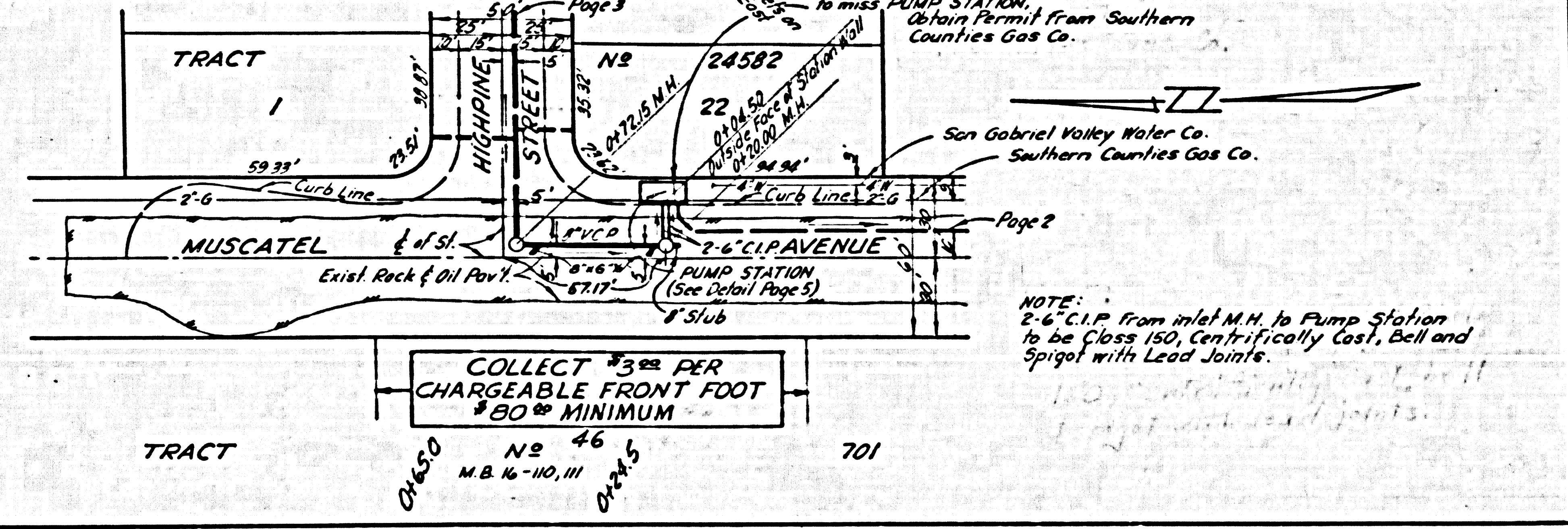
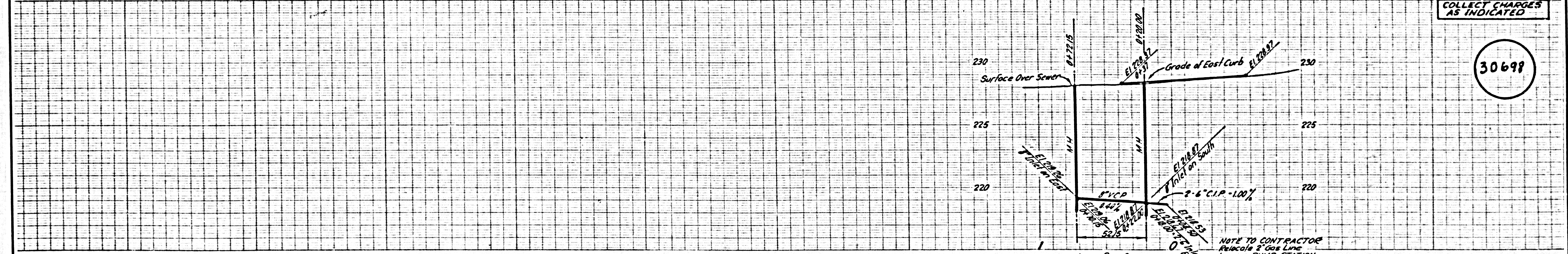




NO CHARGE FOR CONNECTIONS



COLLECT CHARGES AS INDICATED



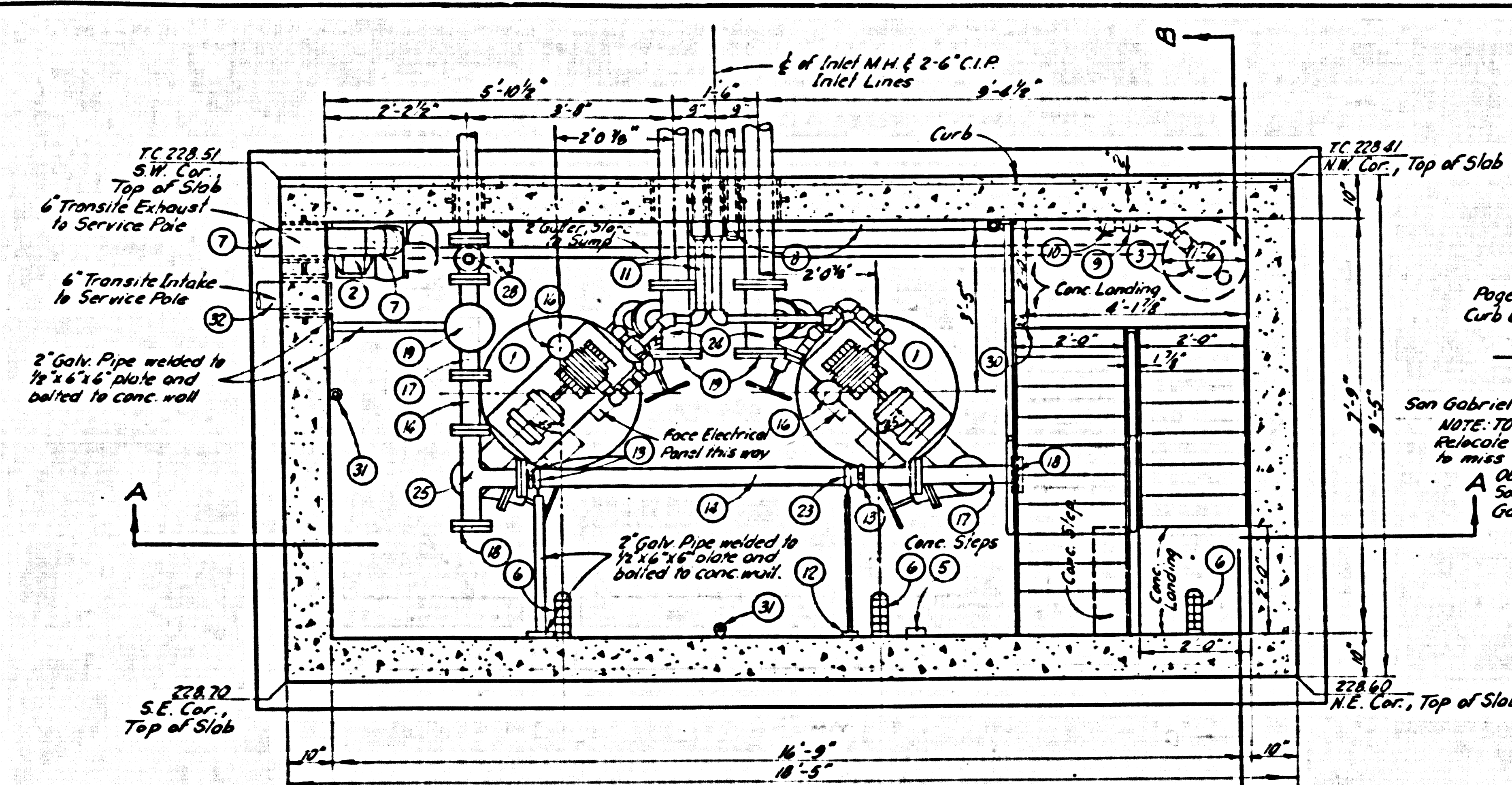
COLLECT \$3.00 PER CHARGEABLE FRONT FOOT \$20.00 MINIMUM

NOTE TO CONTRACTOR: No miss. PUMP STATION. Obtain Permit from Southern Counties Gas Co. San Gabriel Valley Water Co.

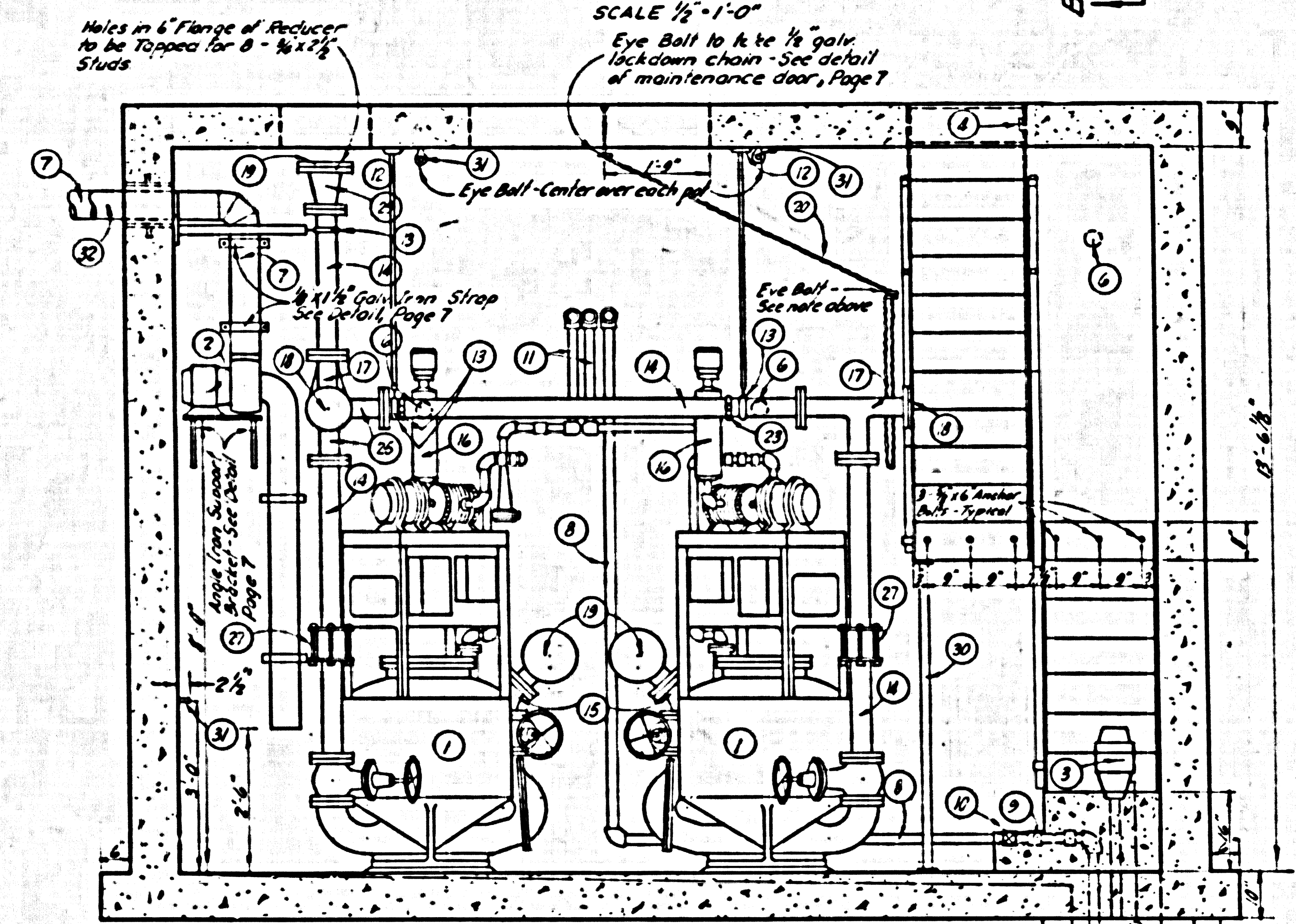
NOTE: 2-6" C.I.P. From inlet M.H. to Pump Station to be Class 150 Centrifugally Cast, Bell and Spigot with Lead Joints.

P.C. 5654 PAGE 3 TRACT NO. 54285

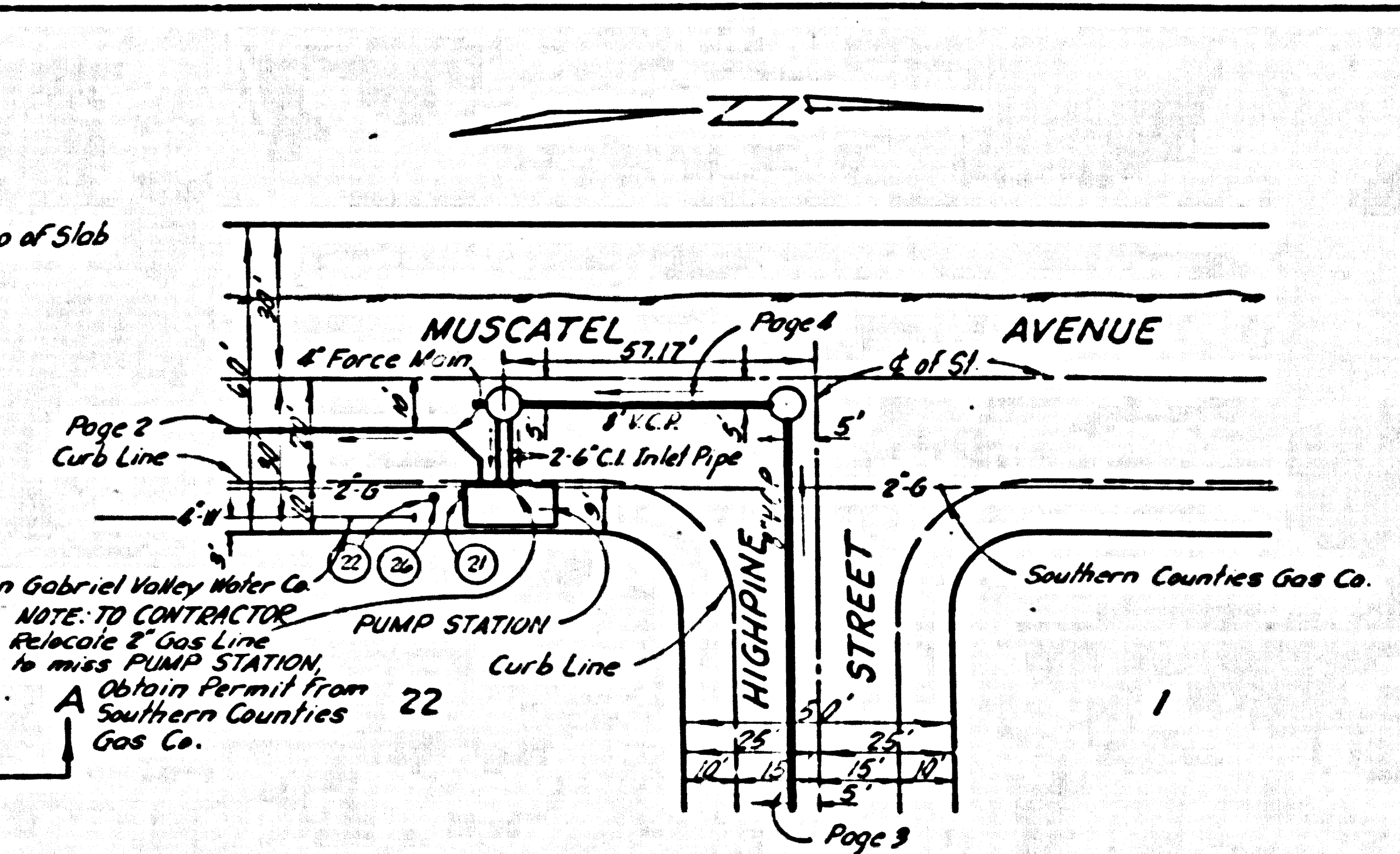
E



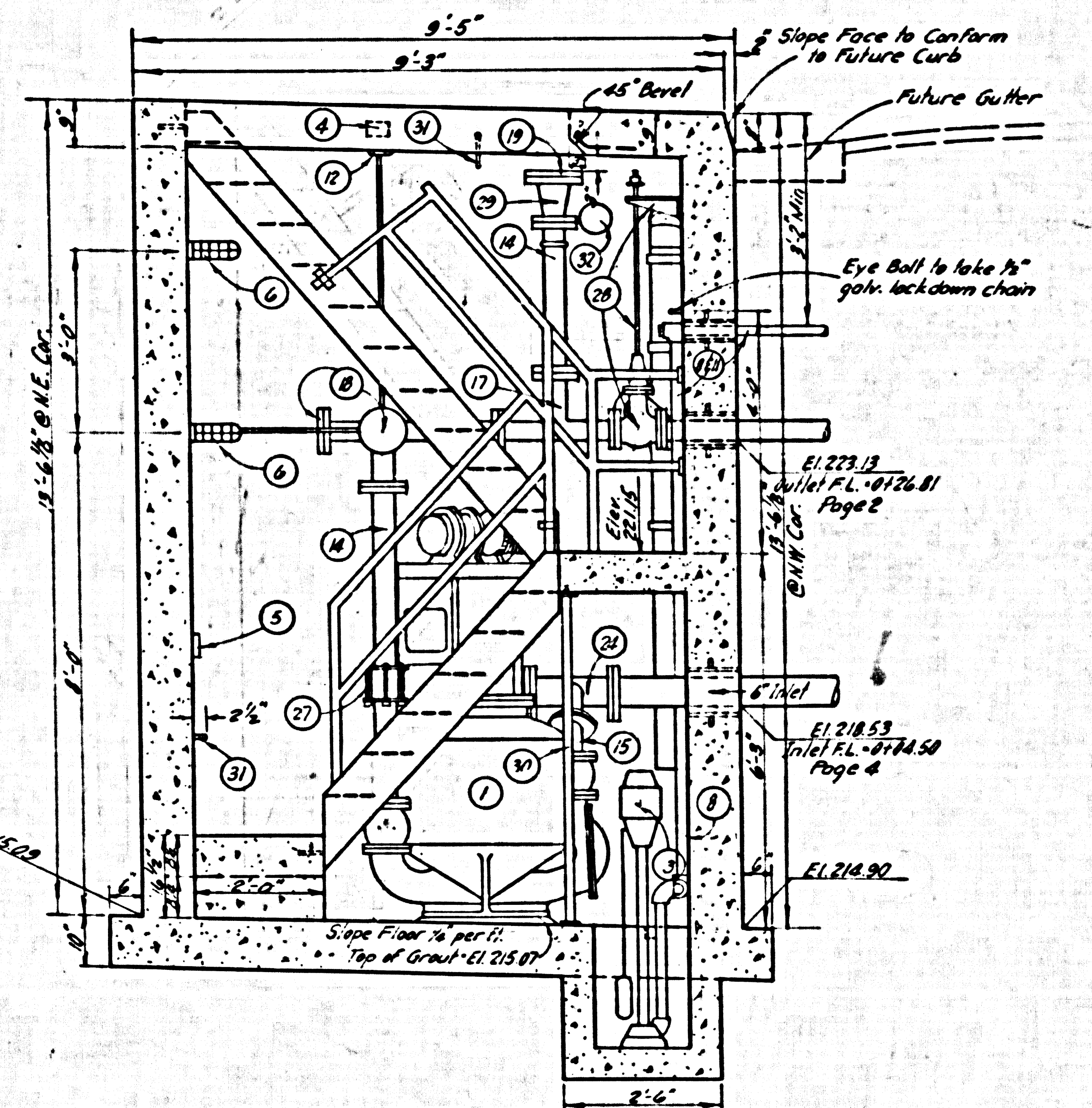
PLAN SCALE 1/2" = 1'-0"



SECTION A-A SCALE 1/2" = 1'-0"



LOCATION MAP SCALE 1" = 30'



SECTION B-B SCALE 1/2" = 1'-0"

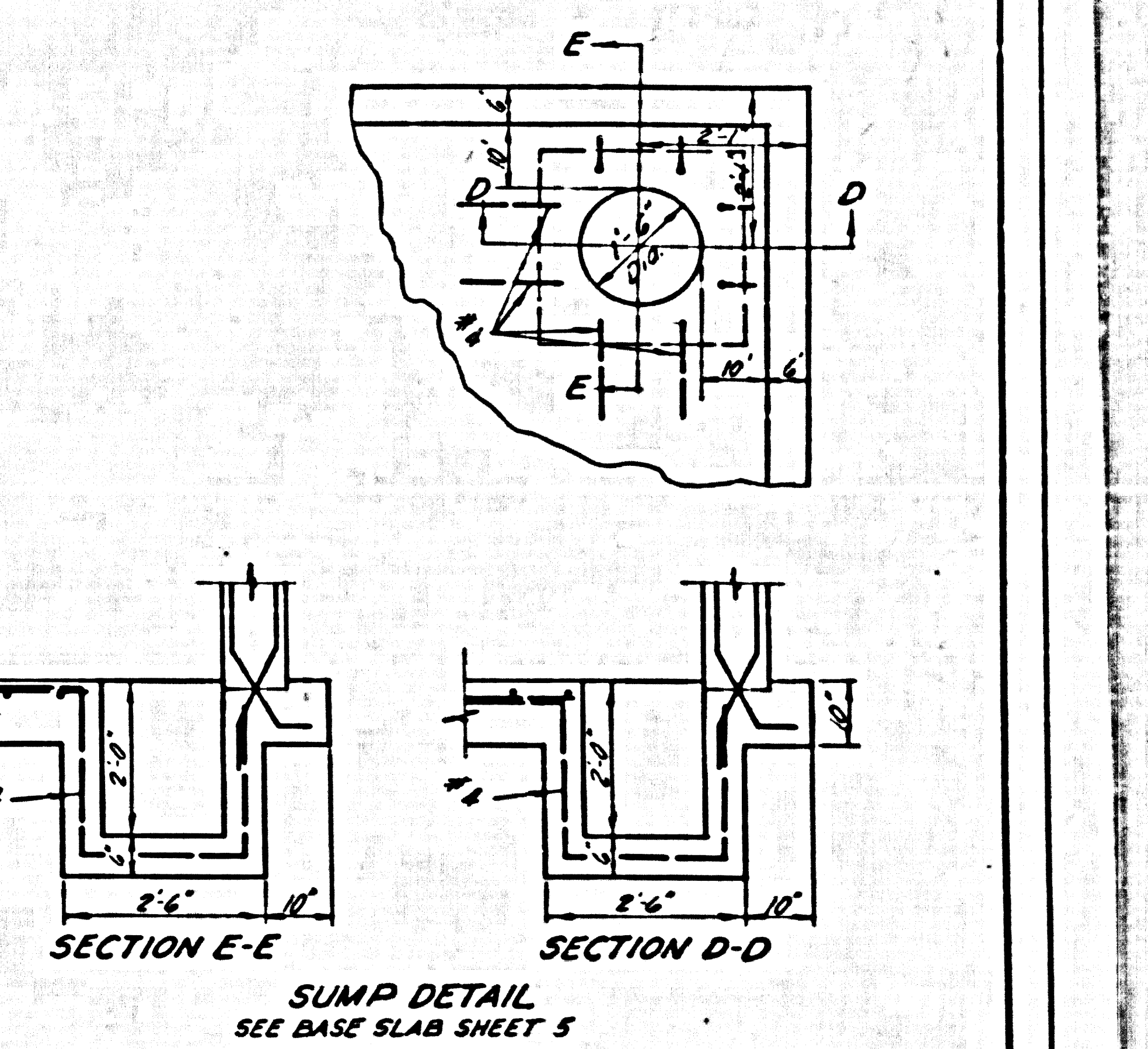
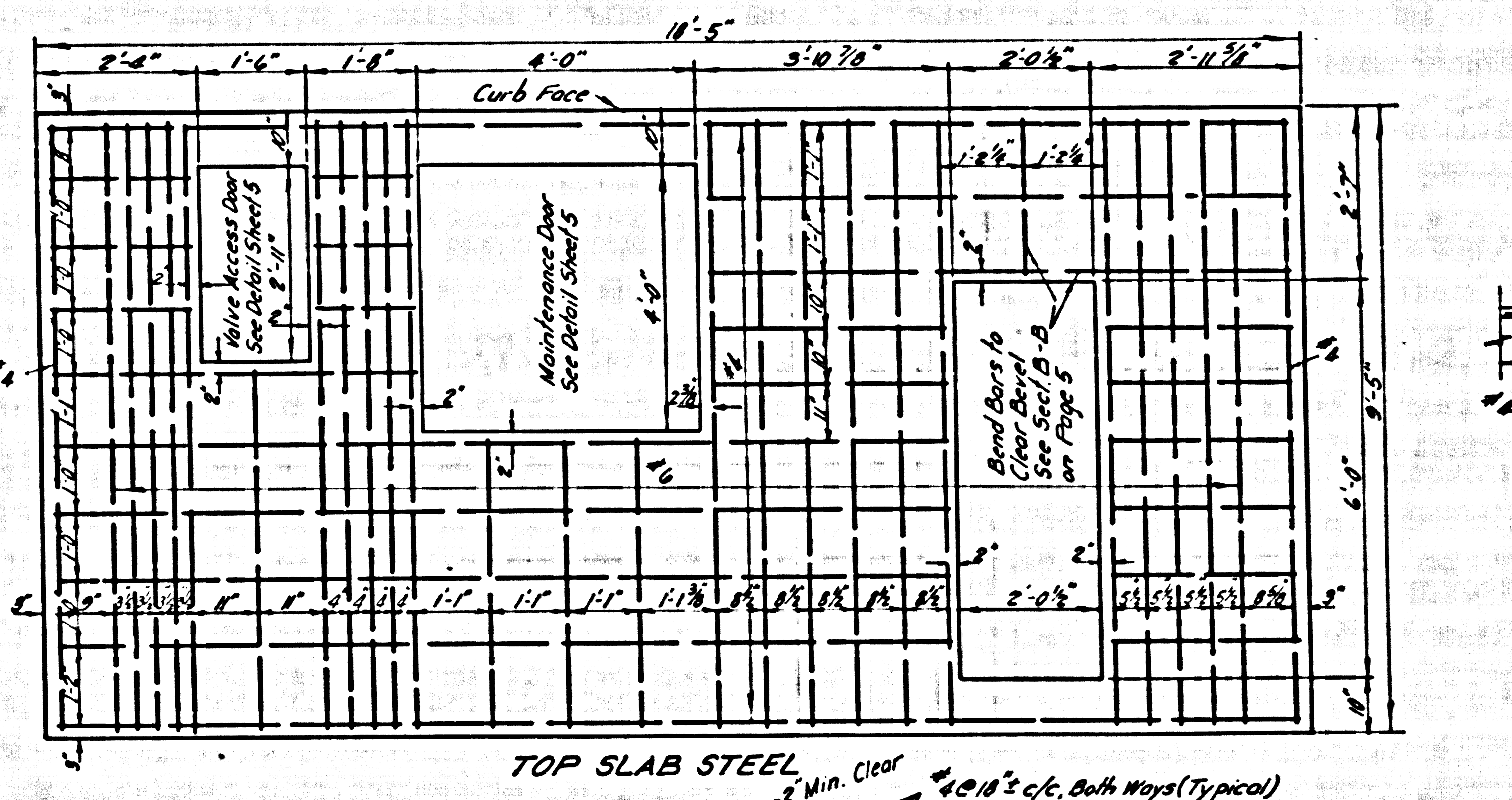
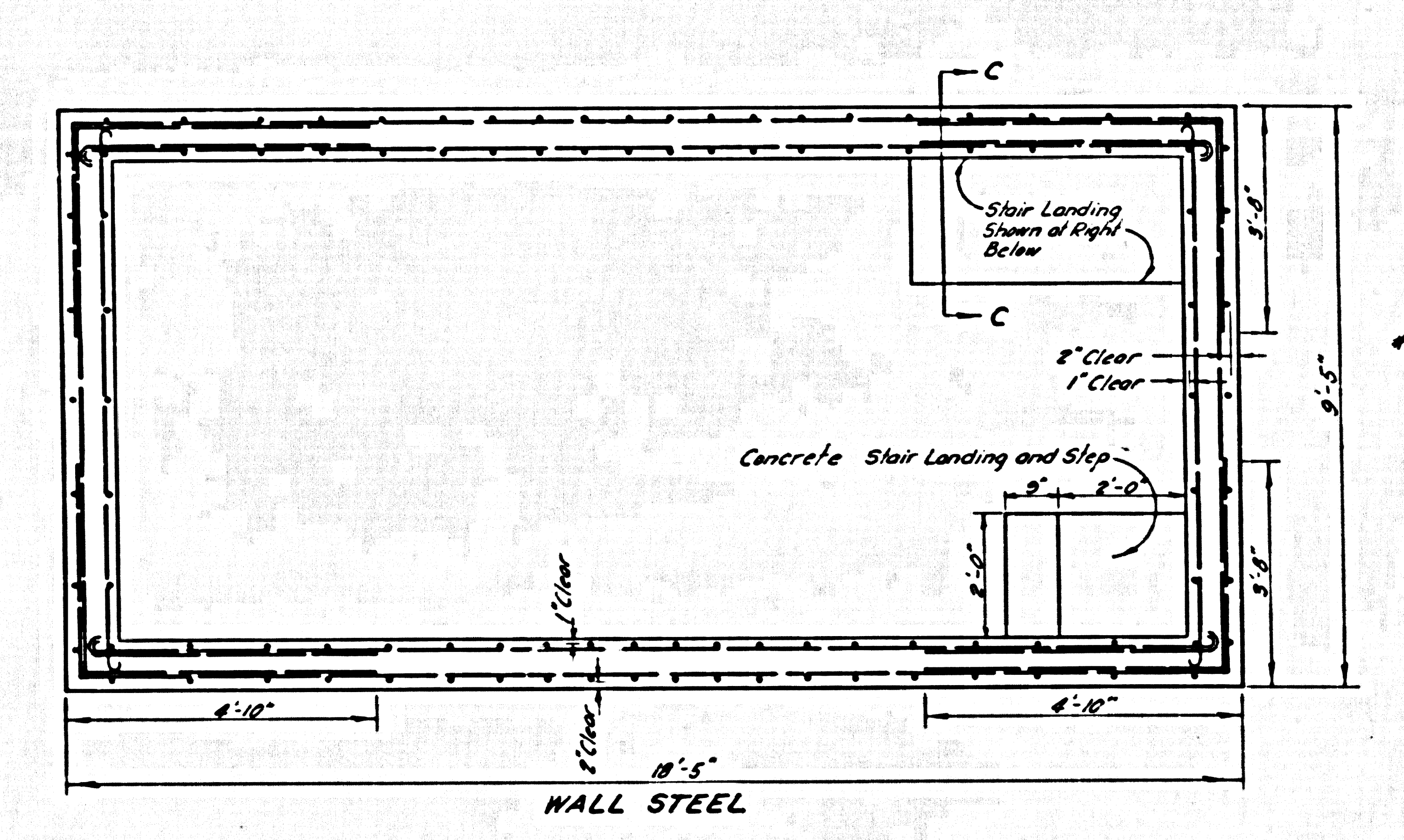
ITEM	QUANTITY	DESCRIPTION
1	2	Shane Pneumatic Ejector Package Type (50 gpm each) Complete with receiver, valves and connections; 3 HP motor driven Keomars rotary air compressor # 543 with Yeoframic 6 H.P.A. 60 PSI, 1000, 2000, 3000, 4000, 5000, 6000, 7000, 8000, 9000, 10000, 11000, 12000, 13000, 14000, 15000, 16000, 17000, 18000, 19000, 20000, 21000, 22000, 23000, 24000, 25000, 26000, 27000, 28000, 29000, 30000, 31000, 32000, 33000, 34000, 35000, 36000, 37000, 38000, 39000, 40000, 41000, 42000, 43000, 44000, 45000, 46000, 47000, 48000, 49000, 50000, 51000, 52000, 53000, 54000, 55000, 56000, 57000, 58000, 59000, 60000, 61000, 62000, 63000, 64000, 65000, 66000, 67000, 68000, 69000, 70000, 71000, 72000, 73000, 74000, 75000, 76000, 77000, 78000, 79000, 80000, 81000, 82000, 83000, 84000, 85000, 86000, 87000, 88000, 89000, 90000, 91000, 92000, 93000, 94000, 95000, 96000, 97000, 98000, 99000, 100000
2	1	Bullfinch Forge Co Blower, size C, 1/4 HP, Vapor-proof, 110 Y. 60 cycles, 1/4" dia. 2" Sump Pump, Model V, 1/4 HP, 1750 RPM, 110V, 43 cycle, 1/4" Vapor - Proof or equal, with Diving Bell
3	1	Switch for lights and blower (Vapor - Proof)
4	1	Cross - link's Arkite Plug and Receptacle - AEQ B38 - Cast Bronze cover with type A-2 3/32" Plug or Equal
5	1	Cross - link's Vapor-tight Light Fixture, ARB-41, Form 200, 200 W, or equal
6	3	4" Transite Pipe (Exhaust)
7	26 Lin Ft	1/2" Galv. Iron Pipe (ream "for drain to inlet M.H.) and Fittings
8	35 Lin Ft	1/2" Galv. Valve, Swing, Brass, Crane # 34 or equal
9	1	1/2" Gate Valve, Brass, Crane # 438 or equal
10	1	1/2" Galv. Iron Exhaust Pipe Fittings (From Ejectors to inlet M.H.)
11	43 Lin Ft	1/2" Ad. swing hanger Flange - Crane # 435 or equal - Bolt to Conc.
12	3 (Min)	3/8" Galv. Split ring and socket - Crane # 307, R-6, or equal
13	4 (Min)	4" Class 150 Cast Iron Pipe in Station (Flanged)
14	21 Lin Ft	4" Class 150 Cast Iron Pipe in Station (Flanged)
15	2	4" Cast Iron Class 125 45° Figs
16	2	Burness STC1 Inlet Silencer
17	2	4" x 1/2" Double Sweep Tee - Class 125
18	2	4" Blind Flange
19	3	4" Blind Flange
20	15 Lin Ft	1/2" Galv. Chain - Snap Fastener each end (Lockdown for Maint. Cap)
21	1	1/4" Special Brass Biangular Street washer, with concealed hinge, Alhambra Foundry Co, Pipe NYA-392A - 6 - 1/2" with lockable cover or approved equal
22	25 Lin Ft	1" Crossed Hanger Pipe
23	1 (Min)	Pipe Clamp - Crane # 212-G, or equal
24	2	4" x 1/2" Cast Iron Class 125 Tee
25	1	4" x 1/2" x 1/2" Cast Iron Class 125 Side Outlet Tee
26	1	BEECO Model 12 backflow preventer
27	2	Smith - Blair # 431 Coupling and GRIMMEL 606 Pipe Clamp
28	1	4" Gate Valve - Stem Extension - Stem Guide
29	1	4" x 1/2" Short Body Reducer - Class 125
30	1	2" Galv. Pipe Post with Galv. Pipe Flanges
31	4	Eye Balls - See detail on Page 7
32	15 Lin Ft	6" Transite Pipe (Intake)

GENERAL NOTES

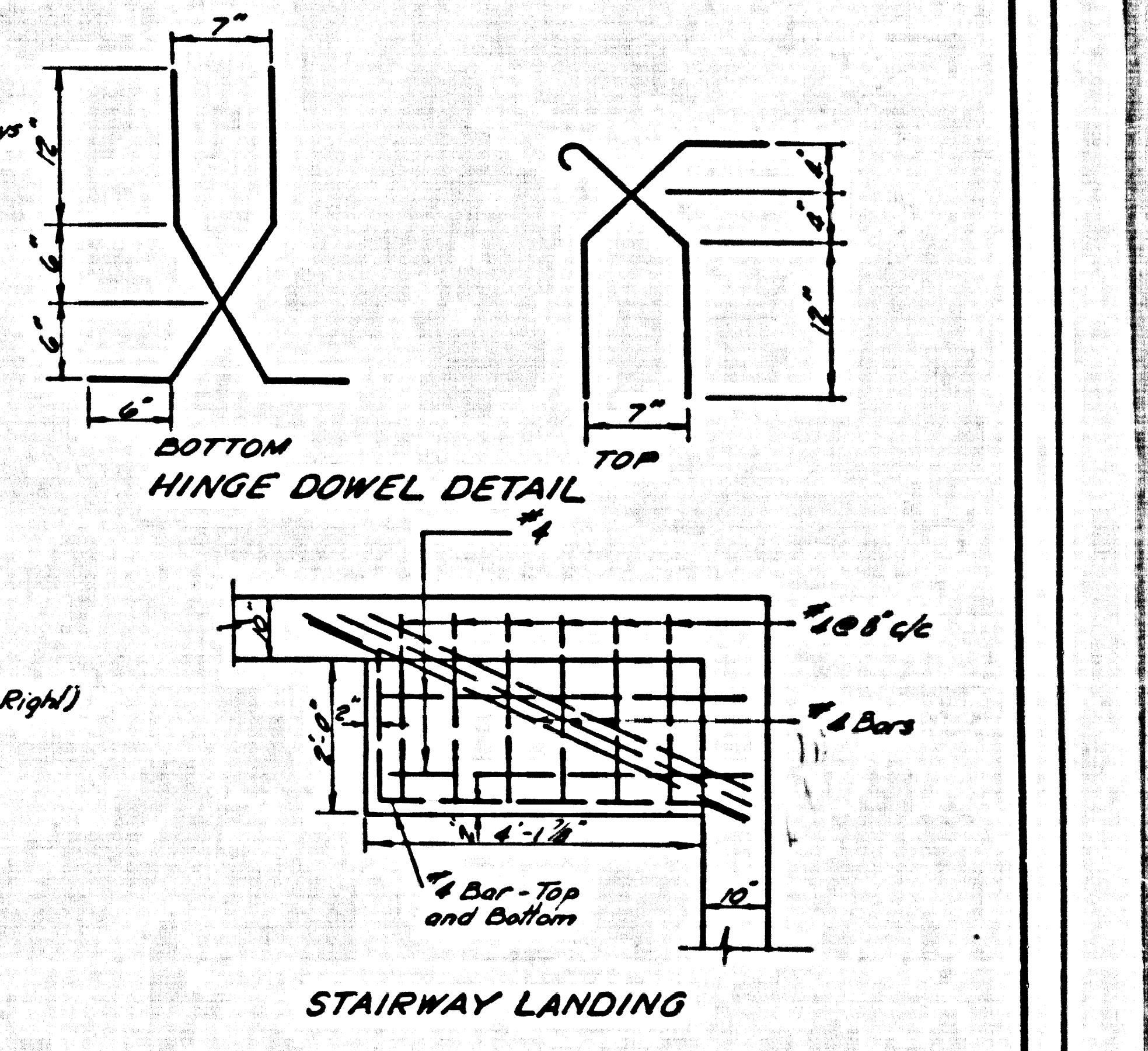
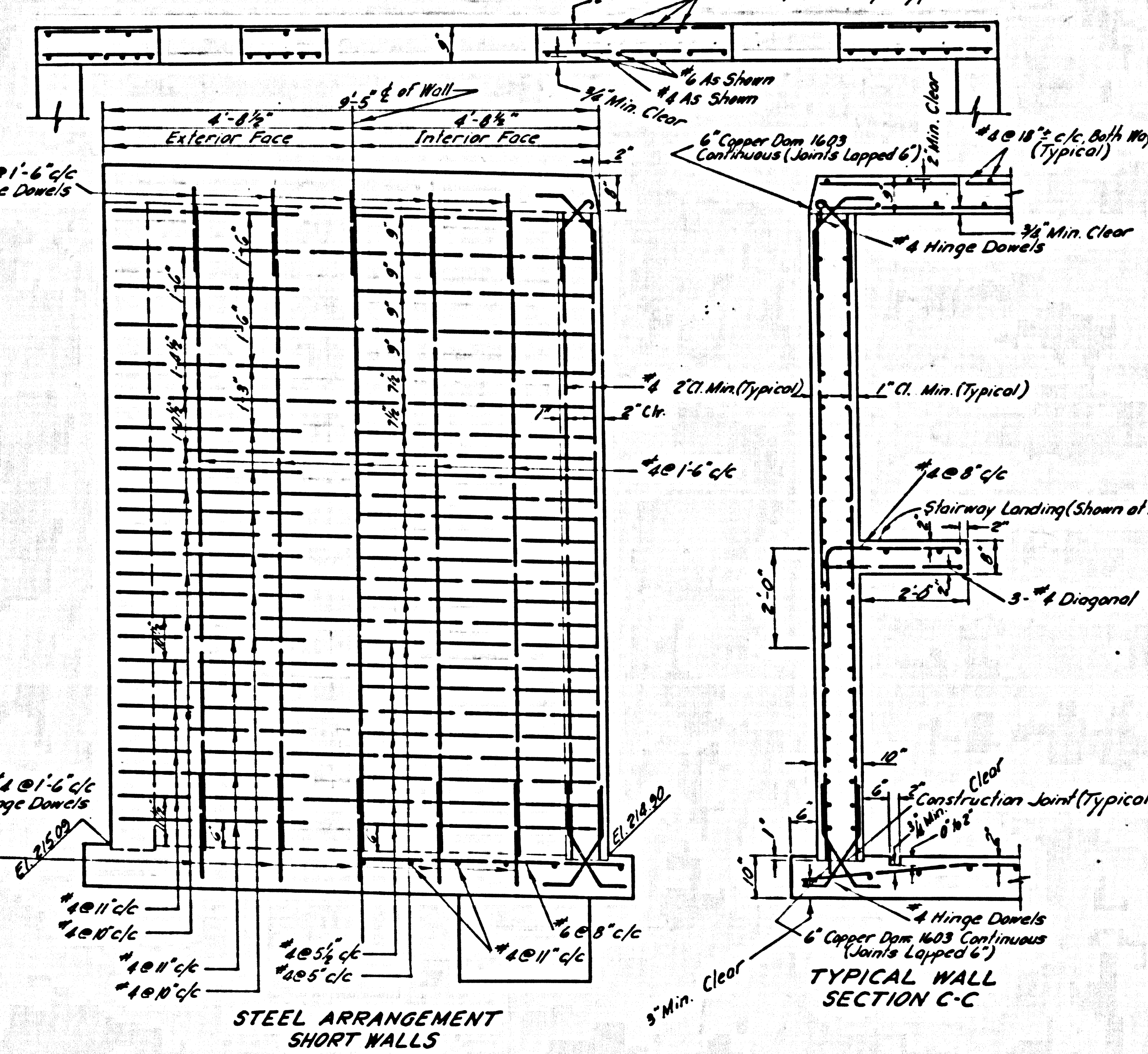
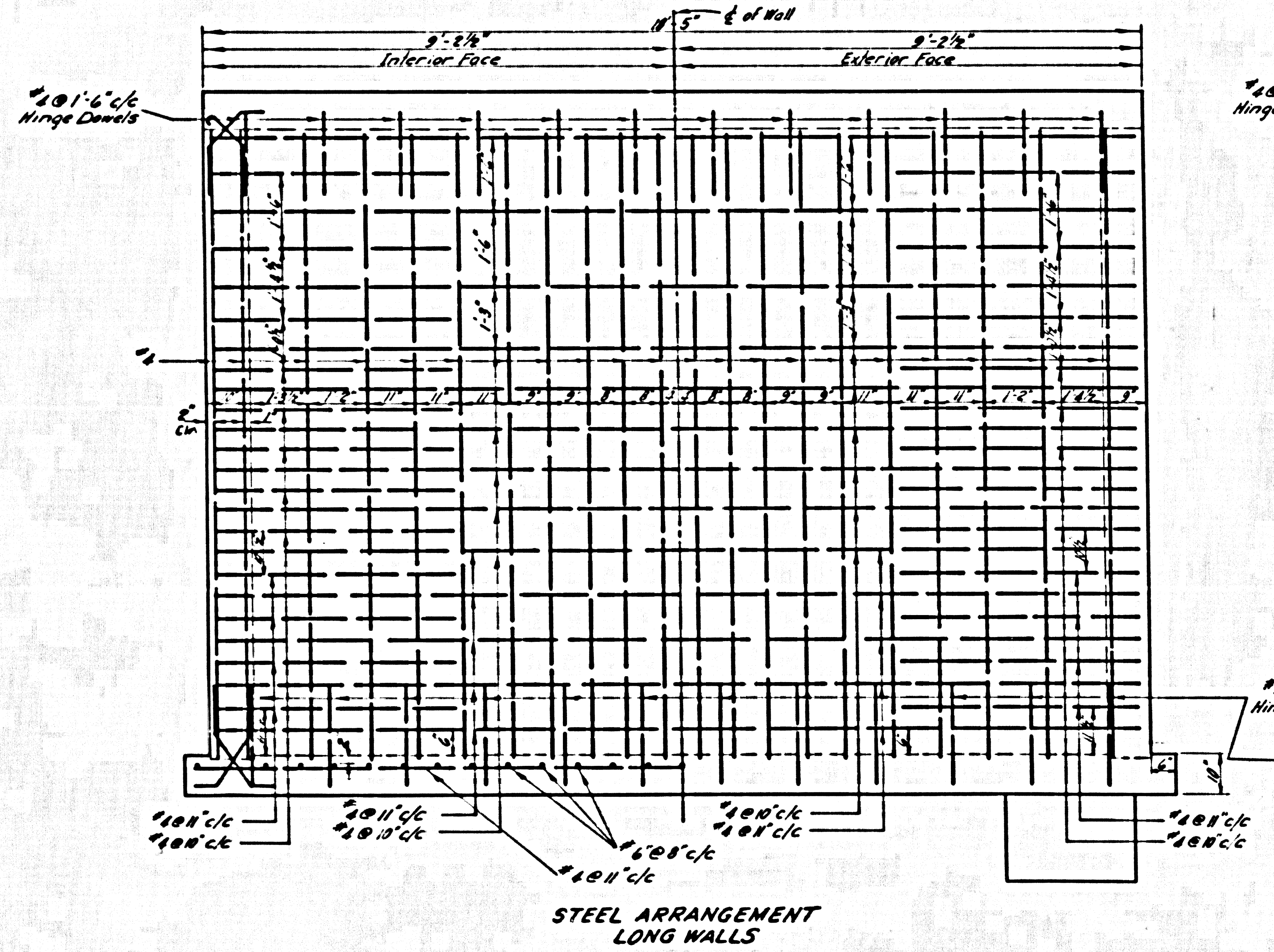
- Ultimate strength of concrete (28 day) 3000 PSI min.
- Use intermediate grade of reinforcing bars (20,000 PSI).
- The contractor shall contact the So. Calif. Edison Co. for power service.
- The contractor shall contact the San Gabriel Valley Water Co. to provide water service to the street washer.
- If a pneumatic ejector other than the type specified should be installed, the contractor shall be responsible for setting any necessary belts, fittings etc.
- Electrical conduit shall be underground from power pole to pump station.
- A waterproof membrane or coating shall be applied to the outside of the pump station. The membrane or coating shall extend to 6" below the surface of the top slab.
- All pipes shall be securely fastened to the walls with galv. iron pipe straps.
- Rigid electrical conduit shall be embedded within the walls and floor of the structure. Conduit for the ejectors to be brought to the ejectors through the floor.
- 1/2" Galv. Iron Pipe from the sump pump shall have a 3' length of pipe within the manhole which will direct the flow in the 1/2" line down toward the base of the manhole.
- 1/2" Galv. Iron Pipe exhaust to direct air downward in inlet M.H.
- Permanent electricity and water meters must be installed, operative and completely good for before acceptance of project.
- Exhaust fan to operate whenever lights are turned on. Separate ON switch in panel box so that fan can be turned on for constant use without turning on lights.
- Compaction around pump station to be in accordance with Los Angeles County Road Dept. requirements, but not less than 90% compaction at optimum moisture content.
- All overboard protection for electrical equipment shall be provided by circuit breakers incorporating time overcurrent and instantaneous short circuit protection with means for locking them in open position.
- The contractor shall furnish the County Engineer with all operating manuals, parts lists, equipment guards, wiring diagrams and any special tools furnished by the manufacturer of the pneumatic ejectors and other equipment installed.

30699

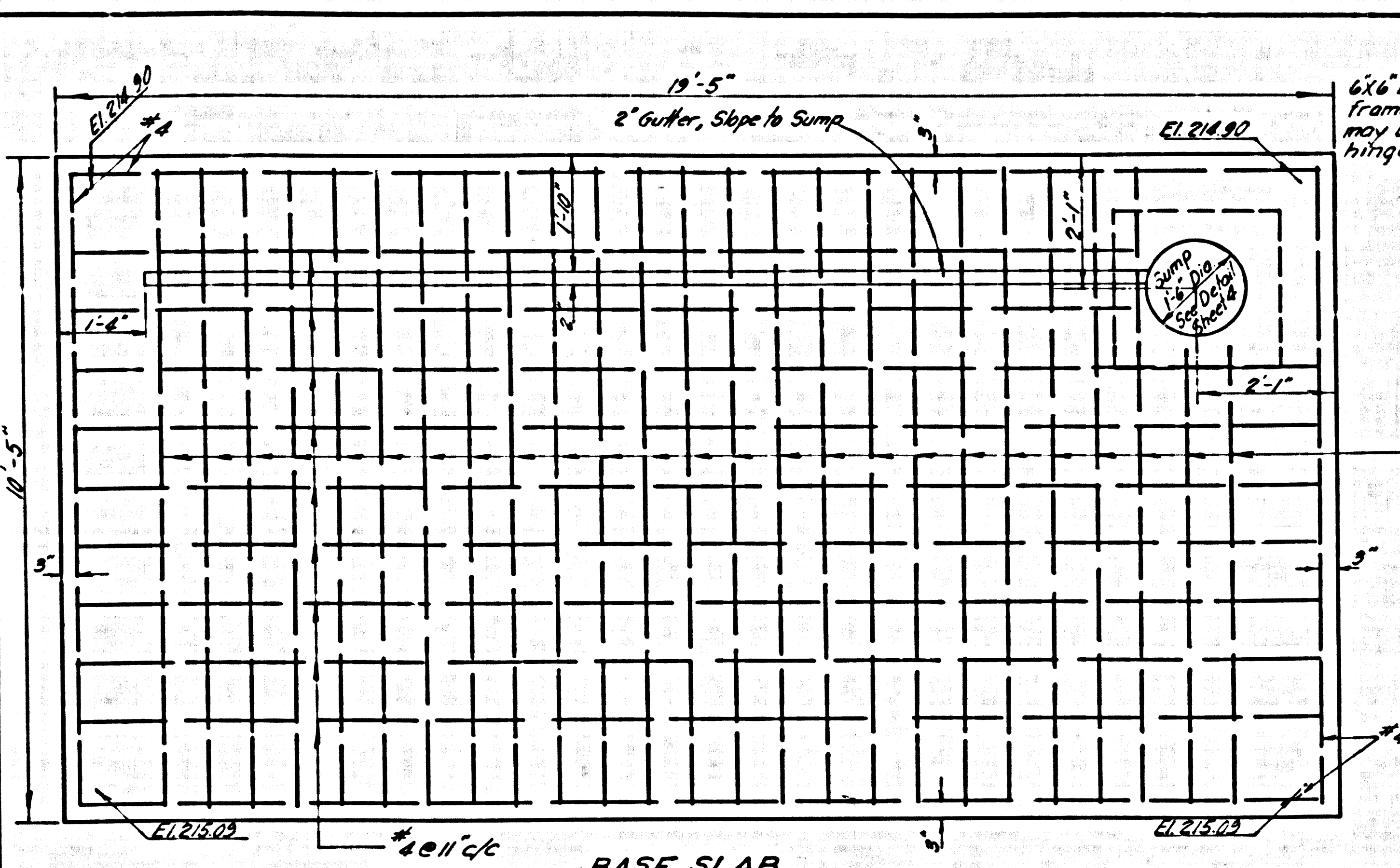
PRIVATE CONTRACT NO 5654  
 CONSTRUCTION PLAN FOR  
 SEWER PUMP STATION  
 TO SERVE  
 TRACT NO 24582  
 SHEET 3 OF 5 SHEETS  
 SCALE 1/2" = 1'-0" EXCEPT AS NOTED  
 COUNTY OF LOS ANGELES  
 JOHN A. LAMBIE COUNTY ENGINEER  
 PREPARED IN THE OFFICE  
 OF  
 ADAMS AND ELLS  
 CIVIL ENGINEERS  
 BY: *[Signature]*  
 R.C.E. 10810



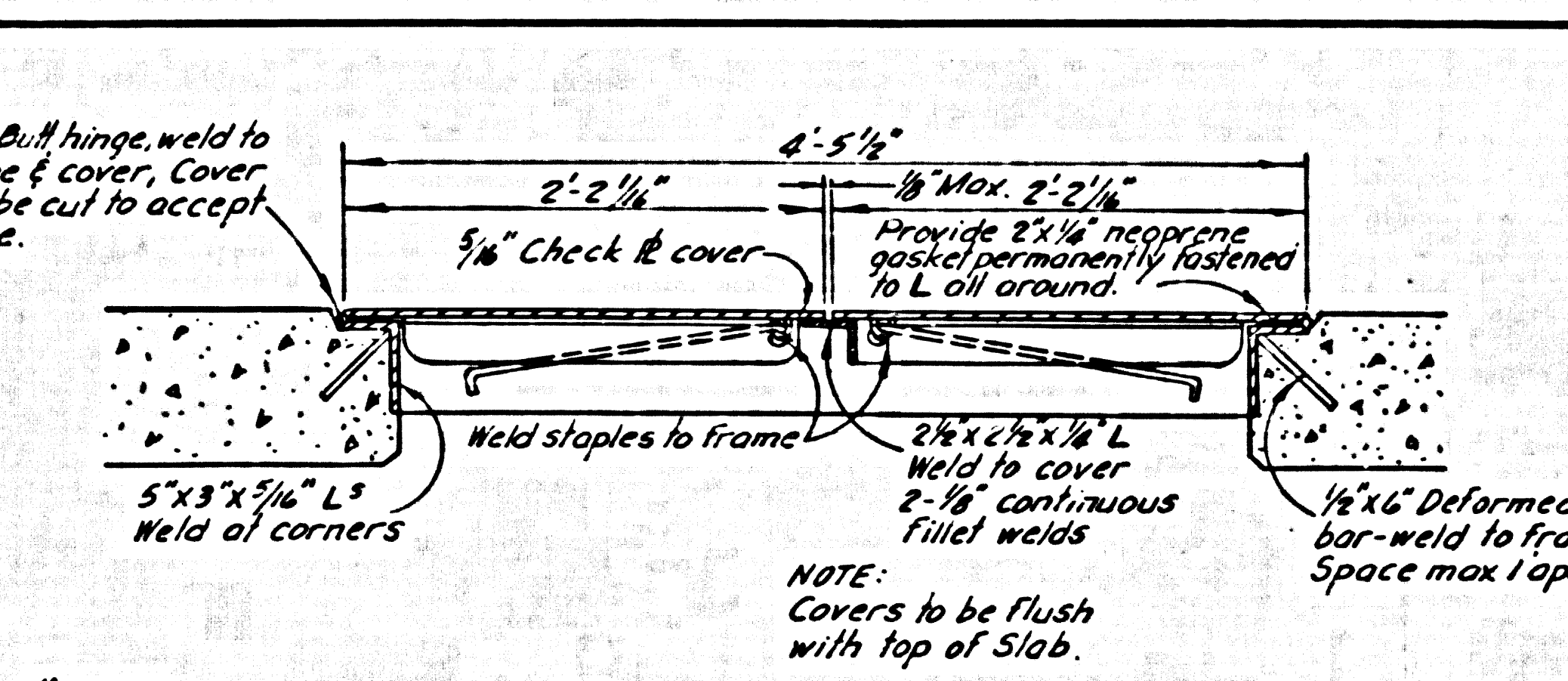
30700



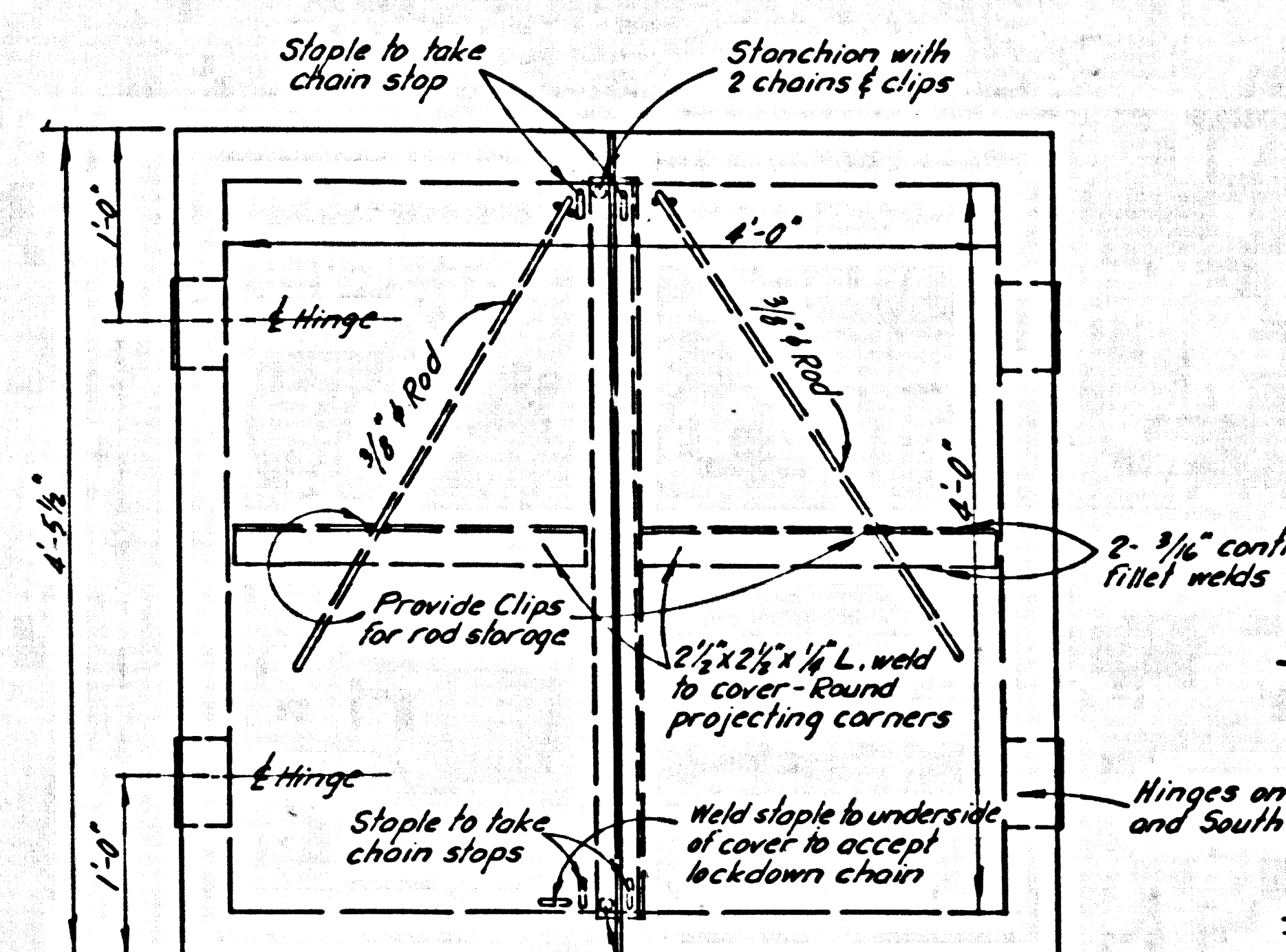
PRIVATE CONTRACT NO 5654  
CONSTRUCTION PLAN FOR  
SEWER PUMP STATION  
TO SERVE  
TRACT NO 24582  
SHEET 4 OF 5 SHEETS  
SCALE 1/2" = 1'-0" EXCEPT AS NOTED  
COUNTY OF LOS ANGELES  
JOHN A. LAMBIE COUNTY ENGINEER  
PREPARED IN THE OFFICE  
OF  
ADAMS AND ELLS  
CIVIL ENGINEERS  
BY: *[Signature]*  
R.C.E. 11110



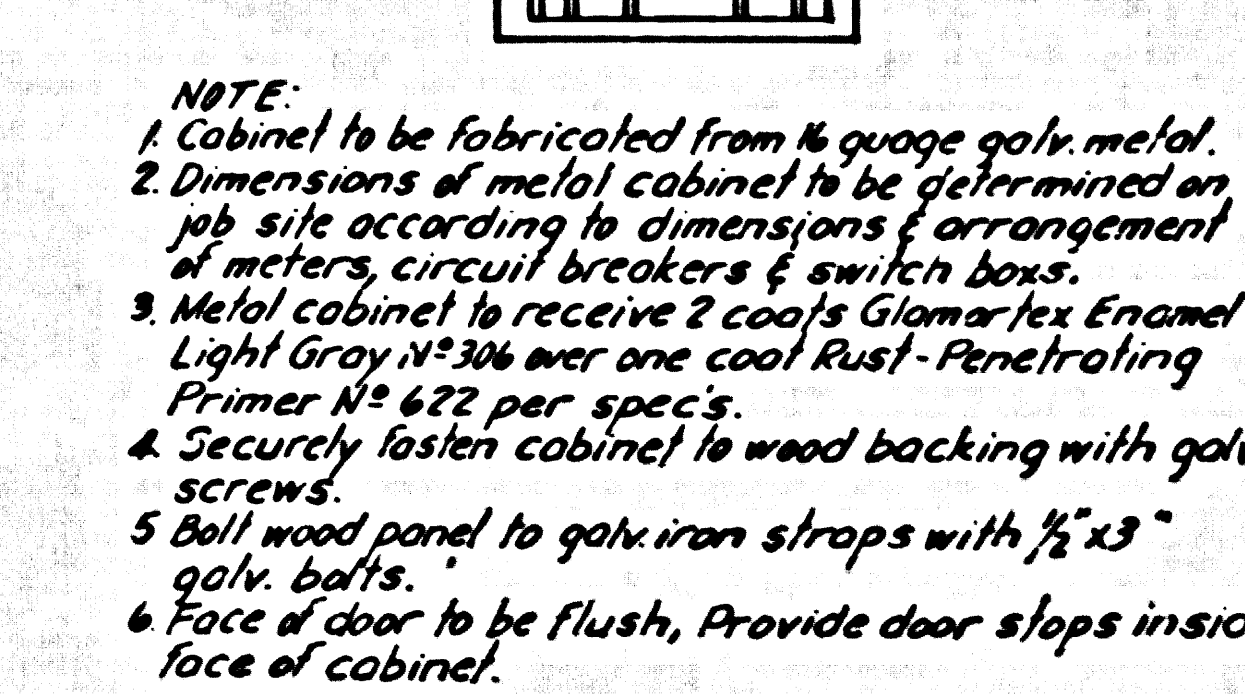
BASE SLAB



NOTE: Covers to be flush with top of Slab.



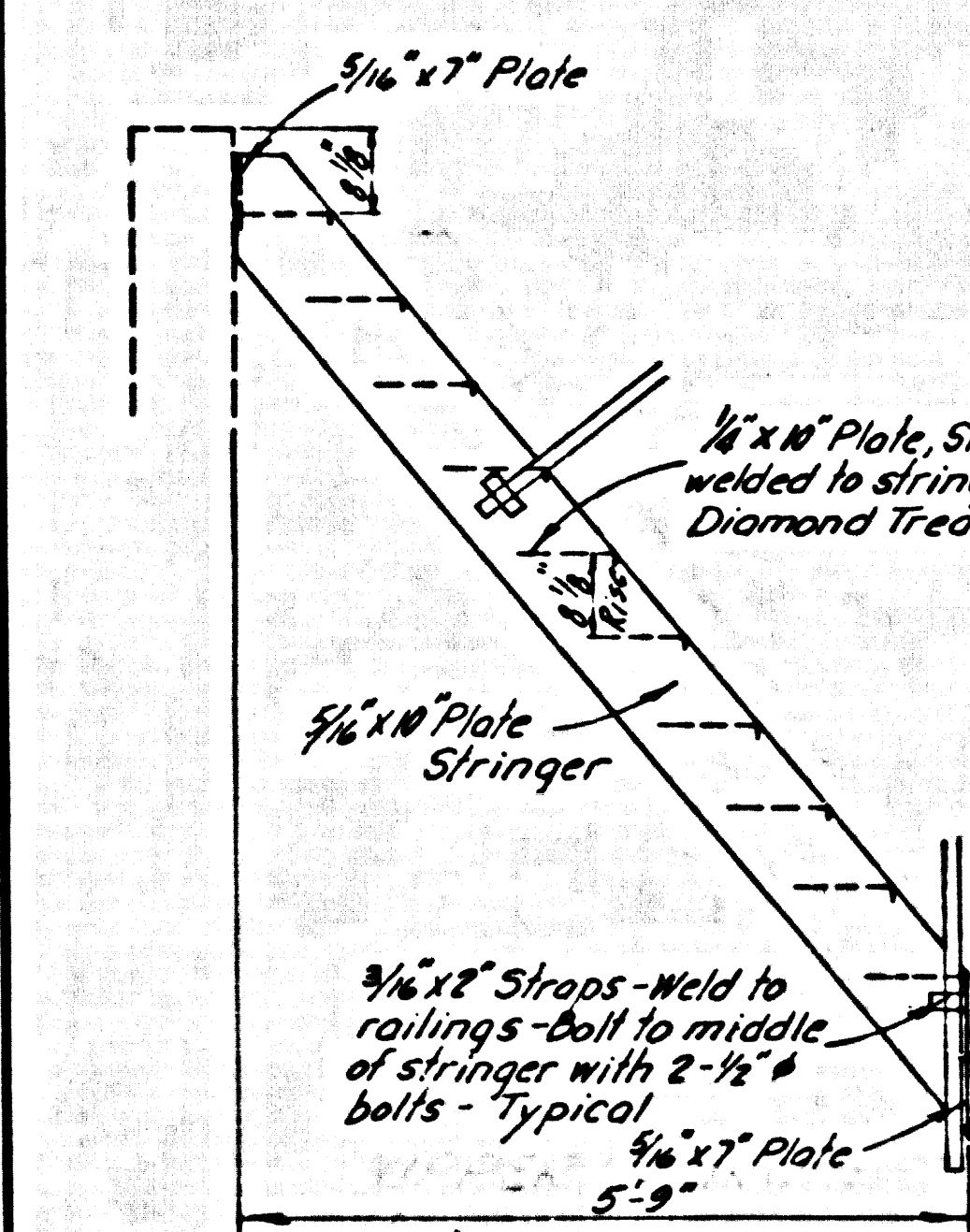
MAINTENANCE DOOR DETAILS



NOTE: 1. Cabinet to be fabricated from 1/4" gauge galv. metal. 2. Dimensions of metal cabinet to be determined on job site according to dimensions & arrangement of meters, circuit breakers & switch boxes. 3. Metal cabinet to receive 2 coats Glomax Enamel-Light Gray, 1/2" max over one coat Rust-Penetrating Primer, 1/2" max per space. 4. Securely fasten cabinet to wood backing with galv. screws. 5. Ball wood panel to galv. iron straps with 1/2" x 3" galv. bolts. 6. Face of door to be flush, provide door stops inside face of cabinet.

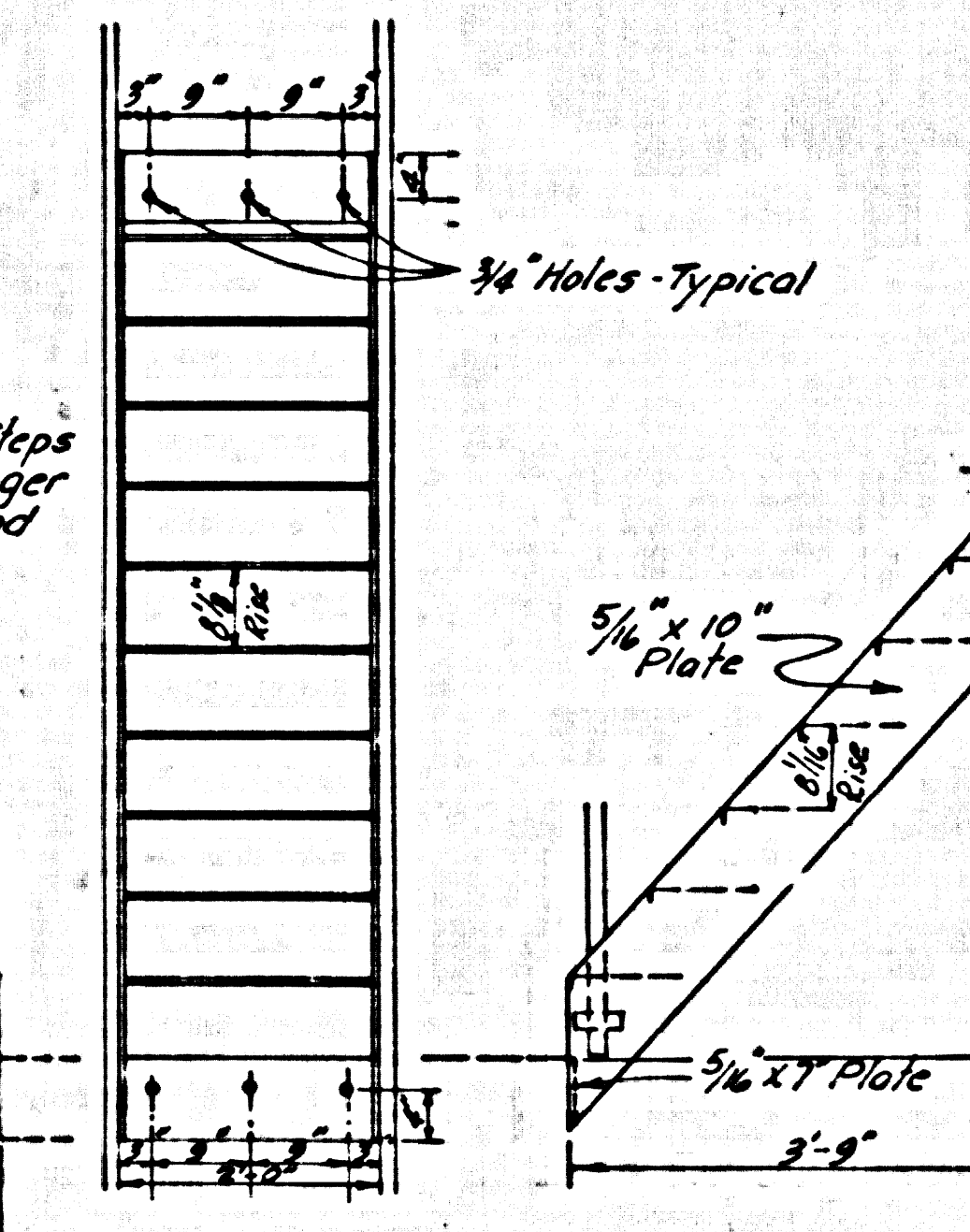
POWER POLE, ELECTRIC CABINET & AIR VENT DETAILS

NO SCALE



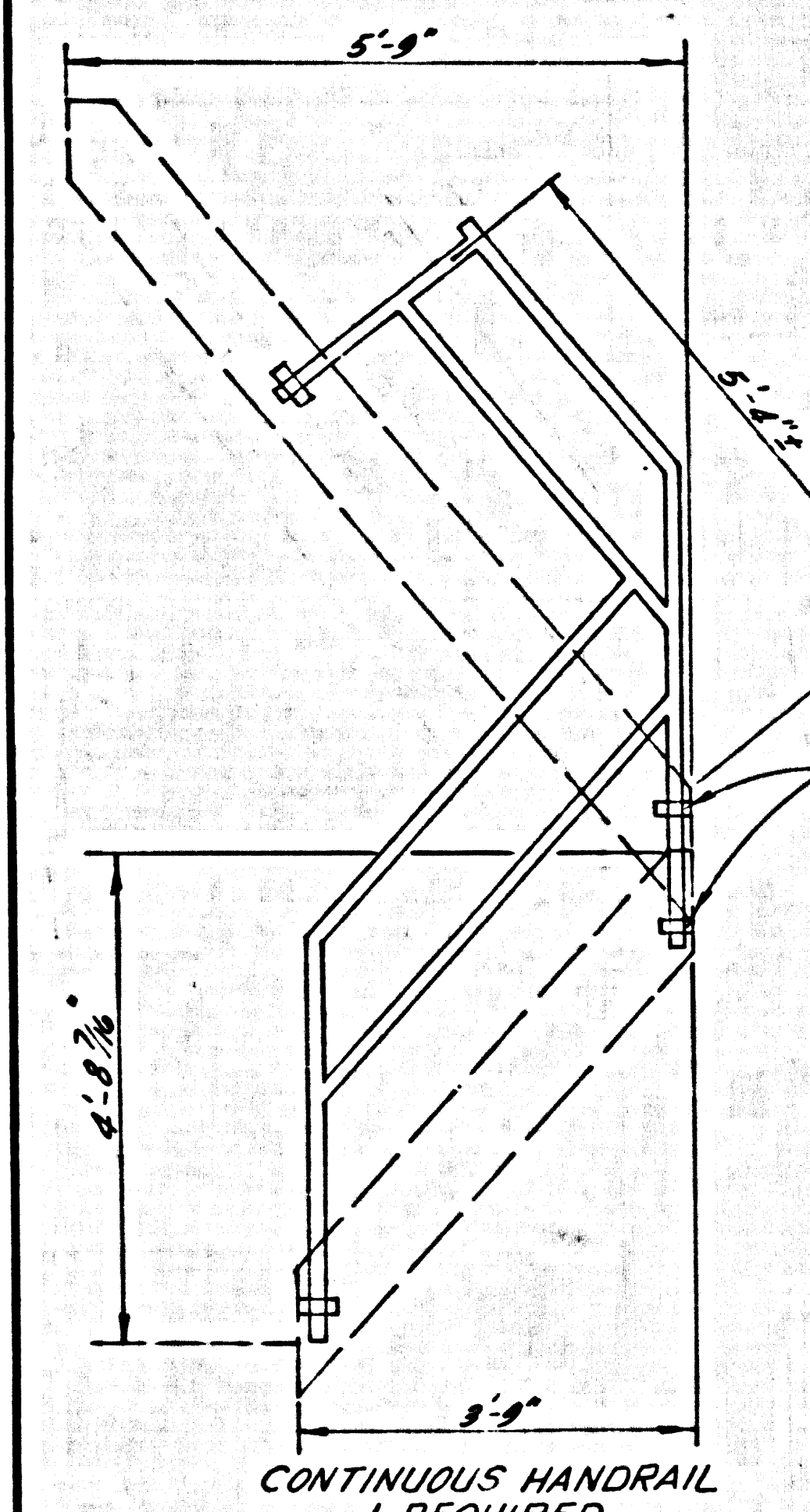
UPPER LADDER

1 REQUIRED



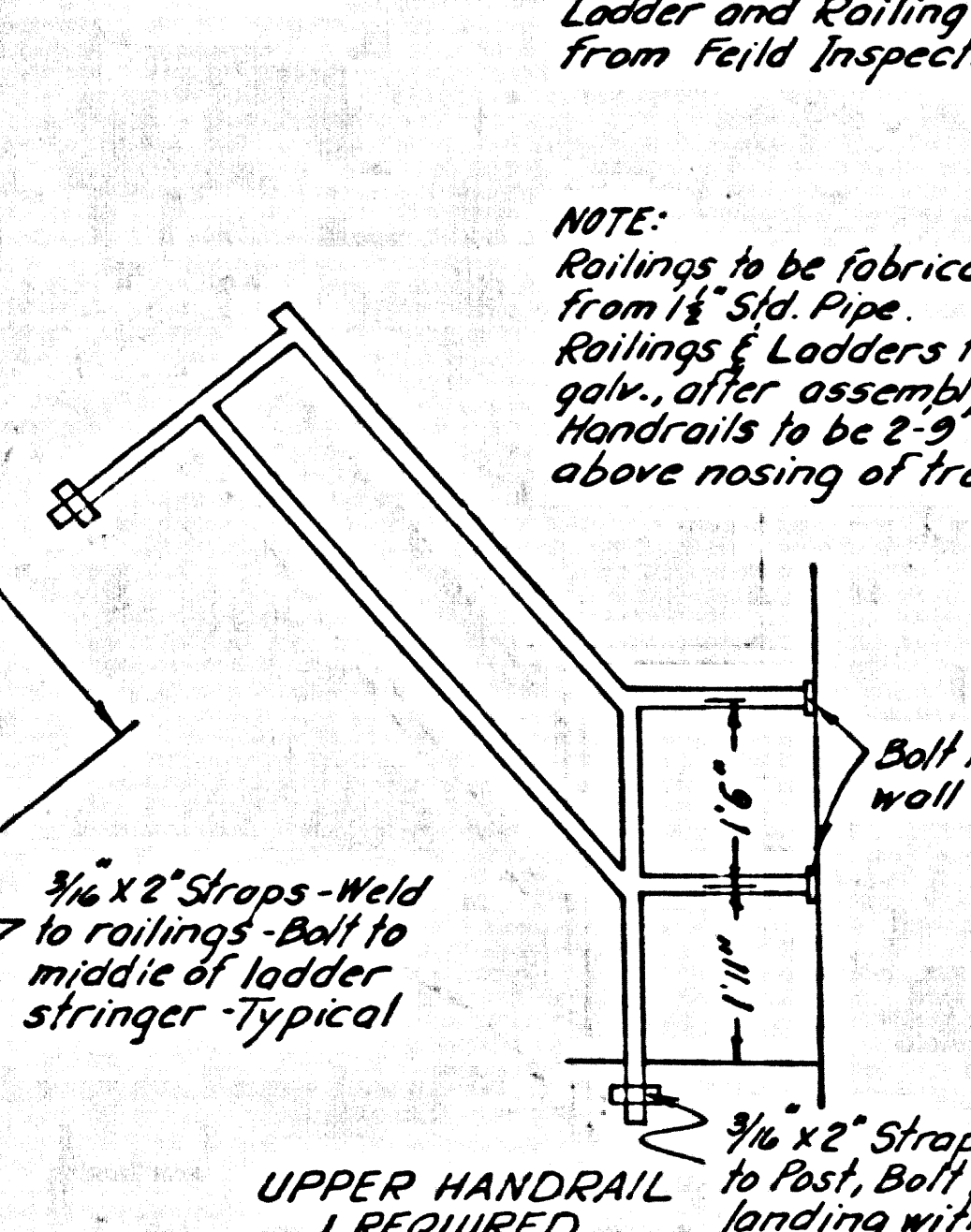
LOWER LADDER

1 REQUIRED



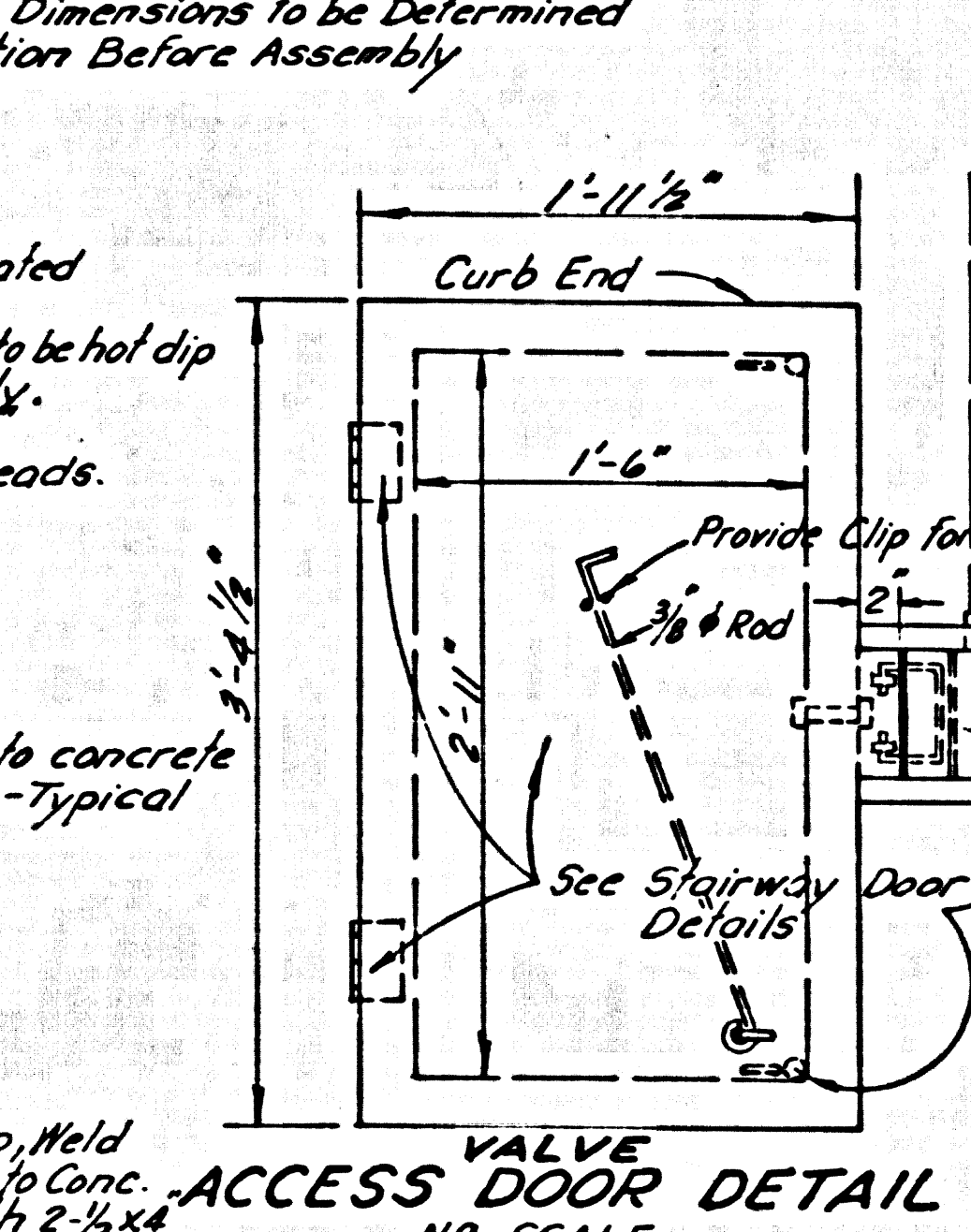
RAILING DETAILS

NO SCALE



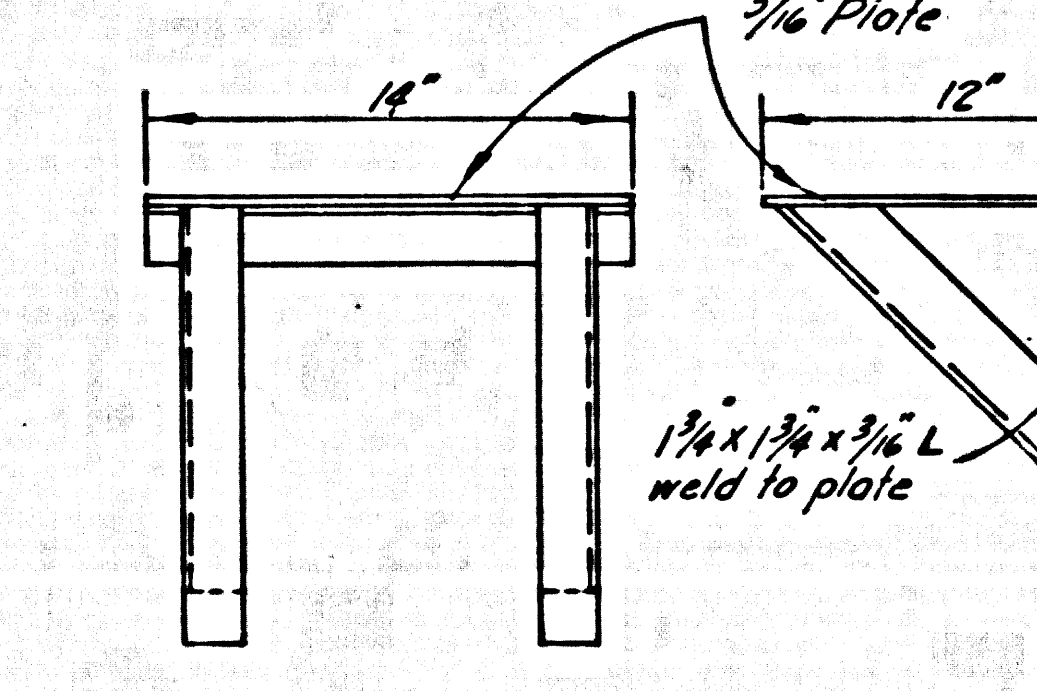
UPPER HANDRAIL

1 REQUIRED



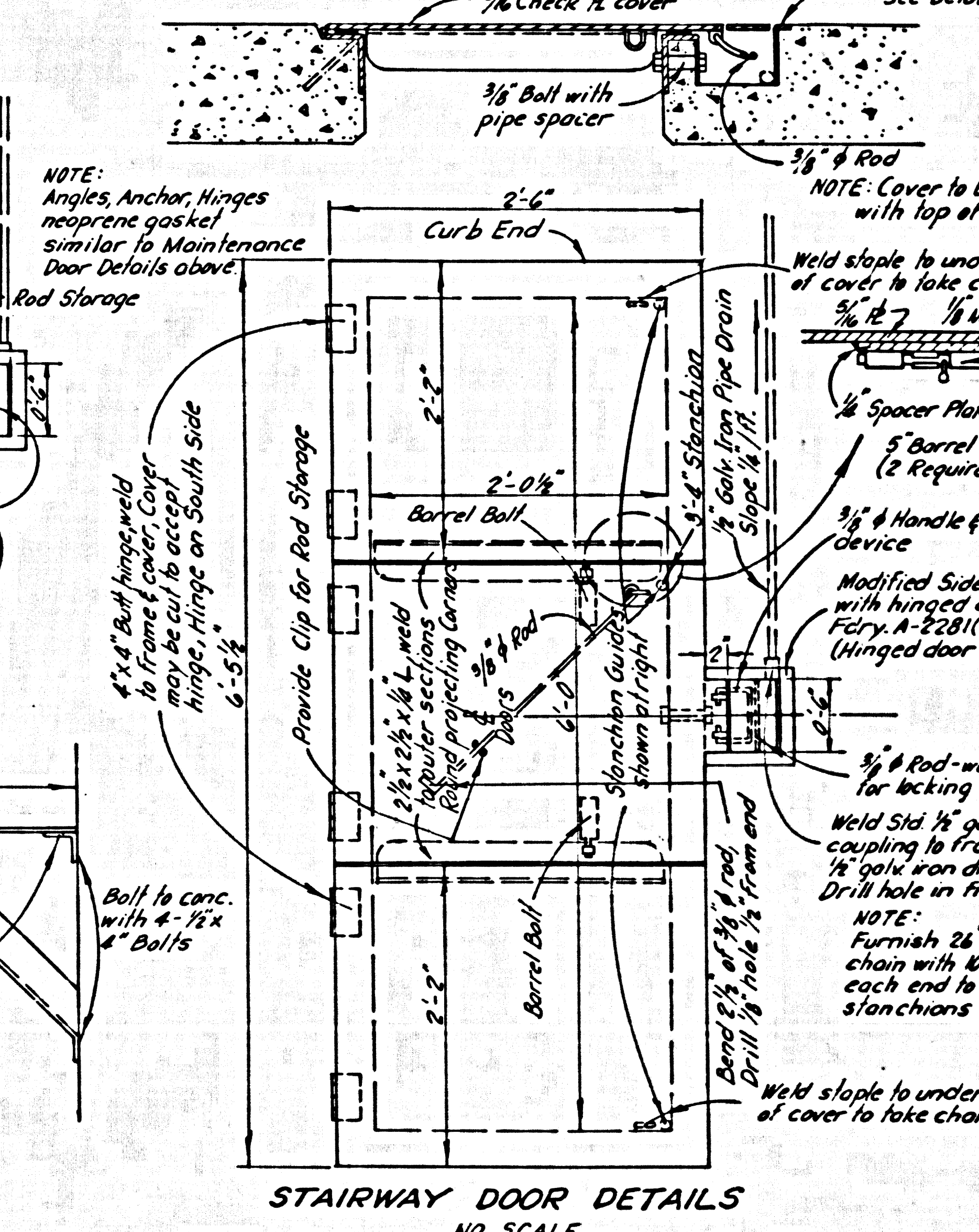
VALVE DOOR DETAIL

NO SCALE



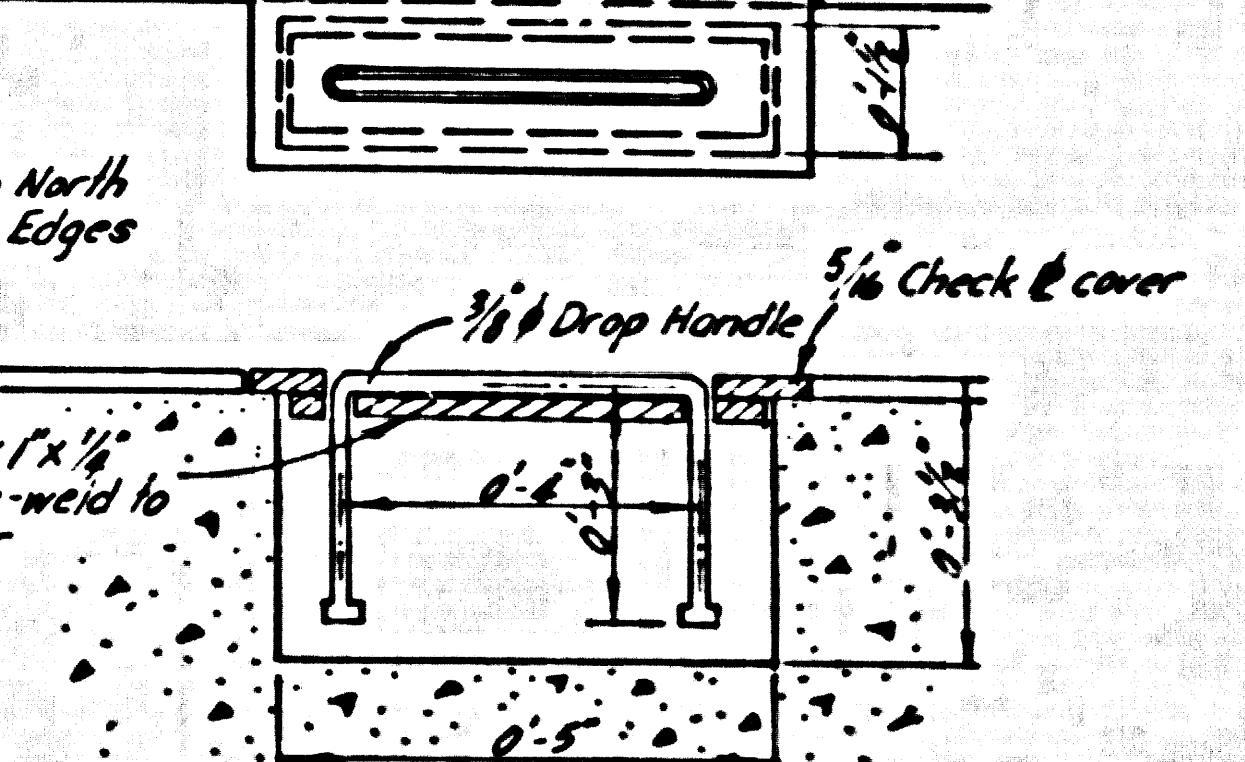
BLOWER STAND

NO SCALE



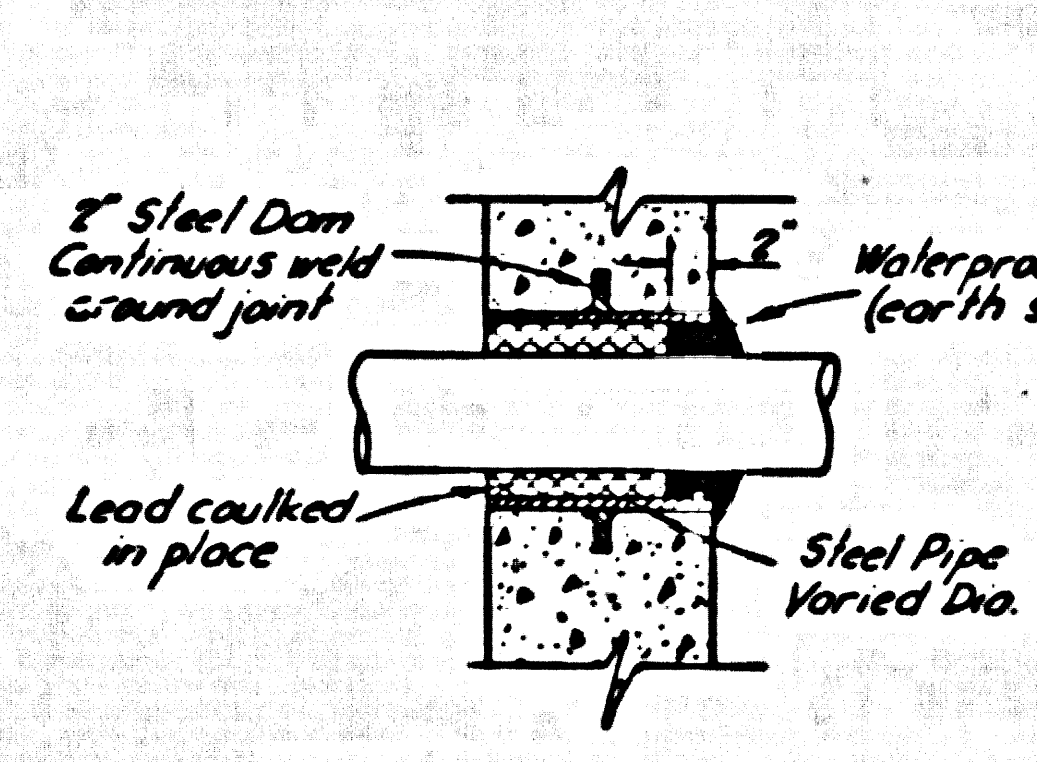
STAIRWAY DOOR DETAILS

NO SCALE



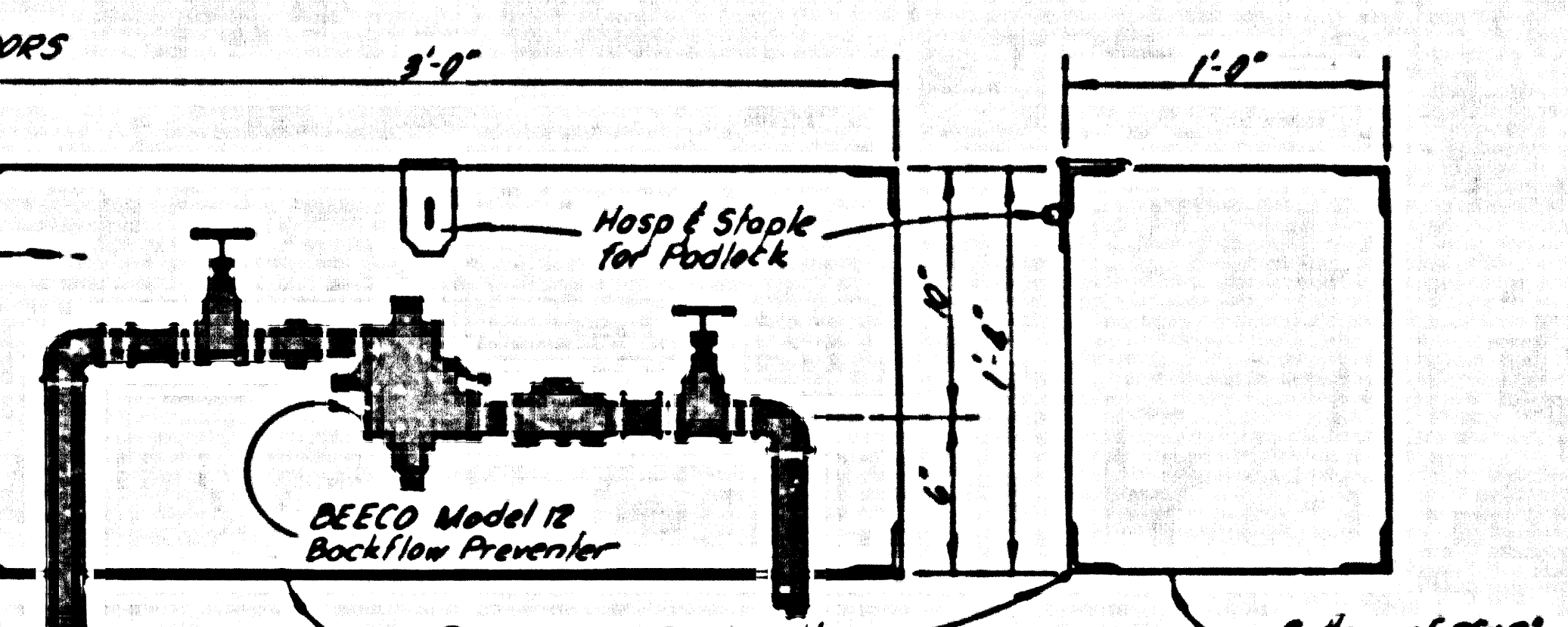
DROP HANDLE DETAIL

NO SCALE



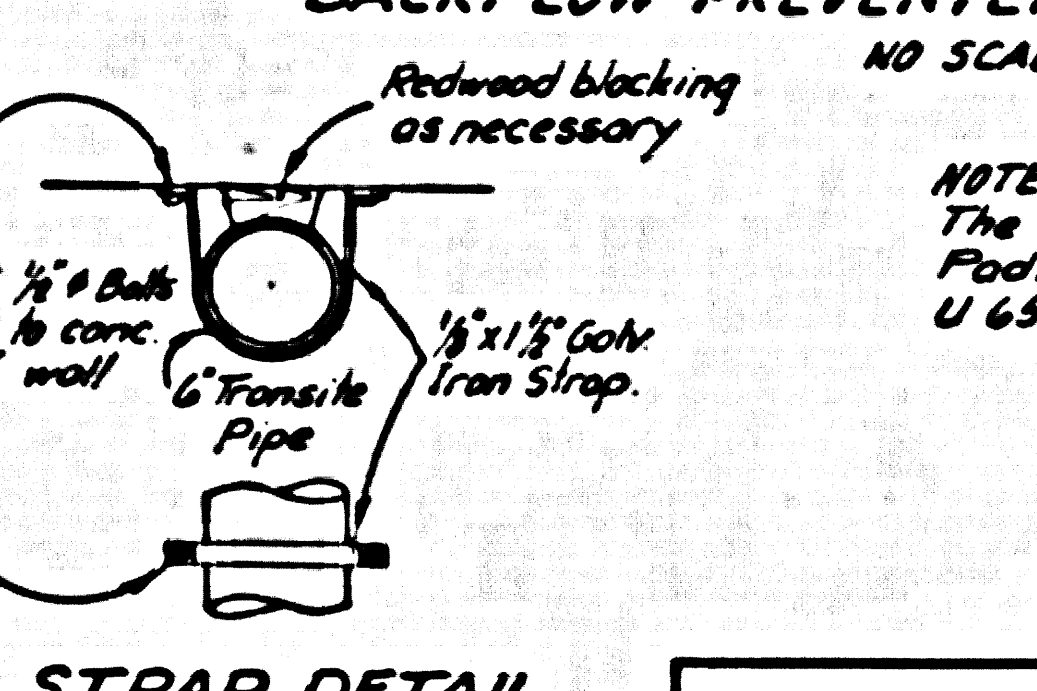
SLEEVE DETAIL

NO SCALE



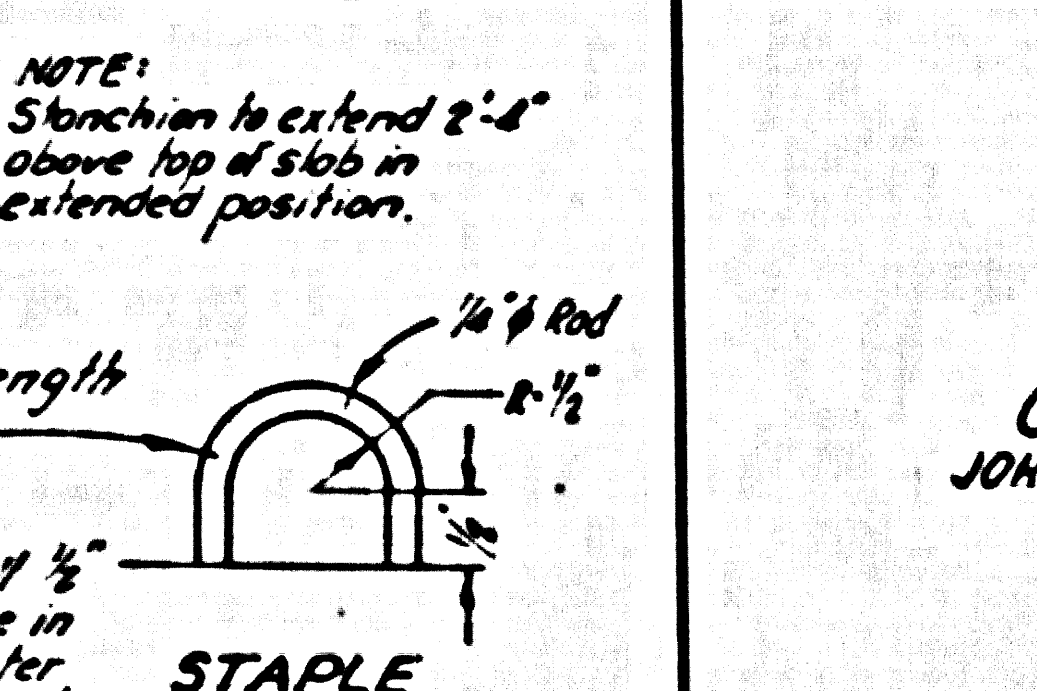
BACKFLOW PREVENTER CABINET DETAIL

NO SCALE



STRAP DETAIL

NO SCALE



STANCHION DETAIL

NO SCALE

88285 W/ TYPART PRS2 CA

PRIVATE CONTRACT NO 5654  
 CONSTRUCTION PLAN FOR  
 SEWER PUMP STATION  
 TO SERVE  
 TRACT NO 24582  
 SHEET 5 OF 5 SHEETS  
 SCALE 1/4"=1'-0" EXCEPT AS NOTED  
 COUNTY OF LOS ANGELES  
 JOHN A. LAMBIE COUNTY ENGINEER  
 PREPARED IN THE OFFICE  
 OF  
 ADAMS AND ELLS  
 CIVIL ENGINEERS  
 BY: [Signature] R.C.E. 10110