

GLENDORA AVENUE
 CITY OF LA PUENTE
 PRIVATE CONTRACT NO.5656

W.S. 47 OR 38

1 SHEET : 2 PAGES

SCALE: VERT. 1"=4' HORIZ. 1"=40'

SEPTEMBER, 1960

PREPARED IN THE OFFICES OF

TREADWELL ENGINEERING CORPORATION

By: W.A. Treadwell, Jr., REG. C. E. NO. 410

FOR LEGEND SEE PLAN NO. S-A-64

29765

B.M. S.G. 1467 ELEV. 345.571
 FRANCISQUITO AVE & GLENDORA AVE. @ INT.
 COUNTY SURV. MON. IN HANDHOLE
 MKD. L.A. COUNTY CONTROL SYSTEM TRAVERSE
 LA PUENTE QUAD. 1953 ADJ. 1954

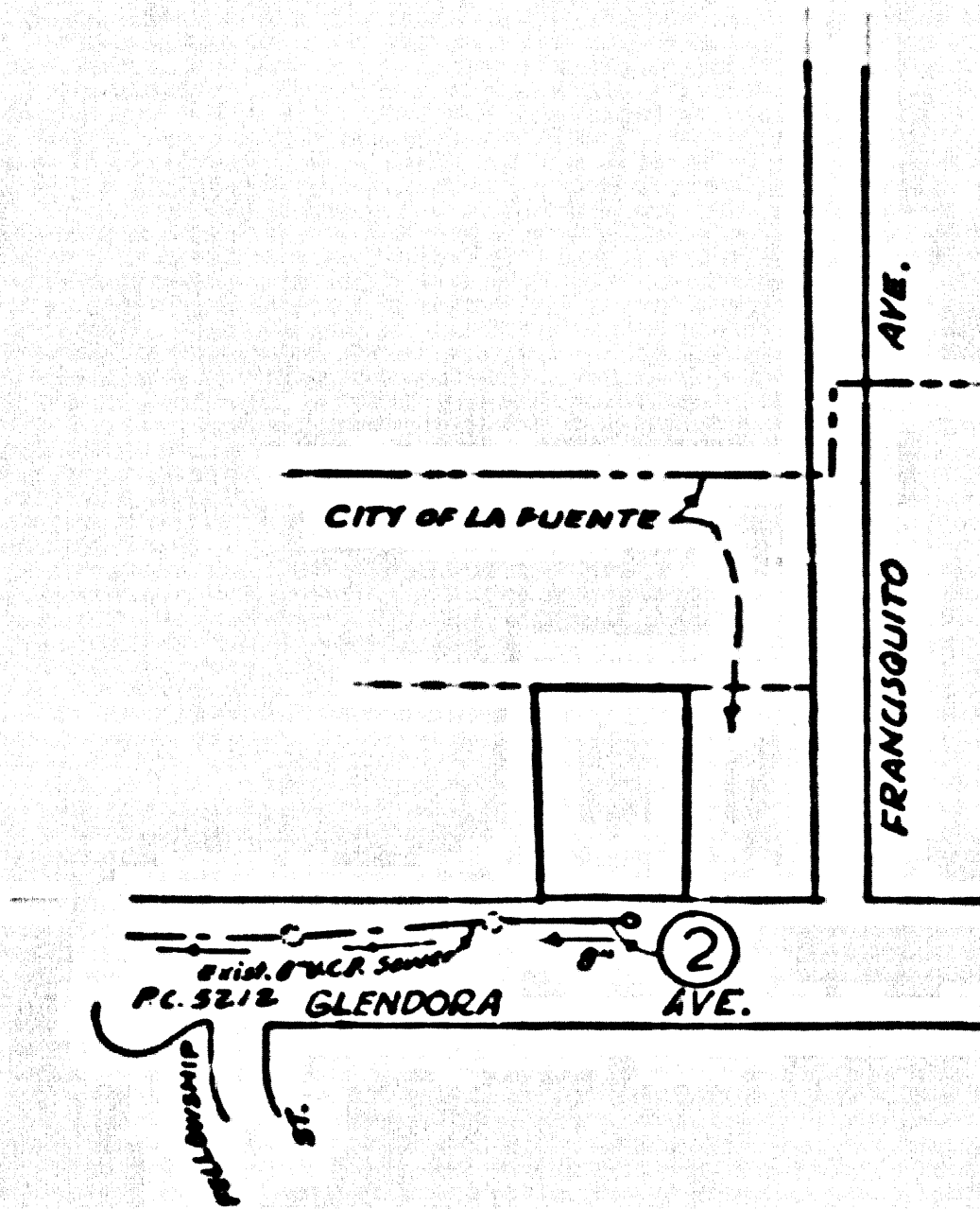
ESTIMATED QUANTITIES

STANDARD MANHOLE	1 EA.
8" V.C.P. MAIN LINE SEWER	148 LIN. FT.
6" V.C.P. HOUSE LATERALS	54 LIN. FT.

NO CHARGE FOR CONNECTIONS
 John D. Rose 9-19-60

- NOTES:
1. PROFILE STAKES ON THE PROPERTY LINE OR PROPERTY LINES PRODUCED AT RIGHT ANGLES TO THE SEWER LINE AT THE CENTER LINE OF EACH MANHOLE.
 2. NO REPRESENTATIVE OF THE CITY ENGINEER WILL SURVEY OR LAY OUT ANY PORTION OF THE WORK.
 3. THE OWNER OR HIS AUTHORIZED REPRESENTATIVE SHALL FURNISH THE CITY ENGINEER WITH GRADE SHEETS AND STATIONING FOR ALL HOUSE LATERALS AND Y BRANCHES AND SHALL PROVIDE STAKES FOR THEM AT THEIR PROPER LOCATIONS WITH STATIONING PLAINLY MARKED. ANY CHANGE IN LOCATION SHALL BE REQUESTED IN WRITING BY THE OWNER OR HIS REPRESENTATIVE.
 4. THE PRIVATE ENGINEER SHALL FURNISH THE HOUSE LATERAL DEPTH AT THE PROPERTY LINE BELOW THE TOP OF CURB ELEVATION FOR EACH HOUSE LATERAL ON THE GRADE SHEET.
 5. NO REVISIONS SHALL BE MADE IN THESE PLANS WITHOUT THE APPROVAL OF THE CITY ENGINEER.
 6. USE STANDARD MANHOLE FRAMES AND COVERS, S-117.
 7. USE STANDARD STRENGTH PIPE.
 8. USE CEMENT MORTAR OR "WEDGE-LOCK" OR "SPEED-SEAL" FOR ALL V.C.P. JOINTS PER SPEC'S, SECS. 16 & 18.
 9. REINFORCE ALL TRENCH WITHIN WAVED AREA TO MEET L.A. COUNTY ROAD DEPT. OR CALIF. STATE HIGHWAY REQUIREMENTS IN ACCORDANCE WITH PERMITS.
 10. ENCASE FOUR FEET OF SEWER AT POINTS OF INTERFERENCE WITH POLES, CASE III, S-117.
 11. HOUSE LATERALS TO BE CONSTRUCTED WITH INVERTS AT PROPERTY LINE .6 FEET BELOW CURB GRADE EXCEPT AS NOTED.
 12. ALL STRUCTURES SHALL BE BRICK SEWER STRUCTURES, S-104.
 13. FOR ALLOWABLE LEAKAGE TEST USE FORMULA NO. 1 SPEC'S, SEC. 14.
 14. MANHOLE TOPS IN UNIMPROVED RIGHTS-OF-WAY TO BE SIX INCHES ABOVE FINISHED GRADE.
 15. THE CONTRACTOR SHALL NOTIFY THE CONSTRUCTION DIVISION BY TELEPHONE, MADISON 9-474, EIGHT HOURS AT LEAST TWENTY-FOUR HOURS BEFORE STARTING ANY WORK UNDER THIS CONTRACT.
 16. STANDARD SPECIFICATIONS DATED JAN. 1, 1960 APPLY IN THE CONSTRUCTION OF THIS PROJECT.

FIGURES IN CIRCLES AT ENDS OF HOUSE LATERALS INDICATE HOUSE LATERALS SHALL BE CONSTRUCTED WITH 1/4" RISE PER FOOT TO PROPERTY LINE.



INDEX MAP
 P.C. 5656
 SCALE 1"=300'

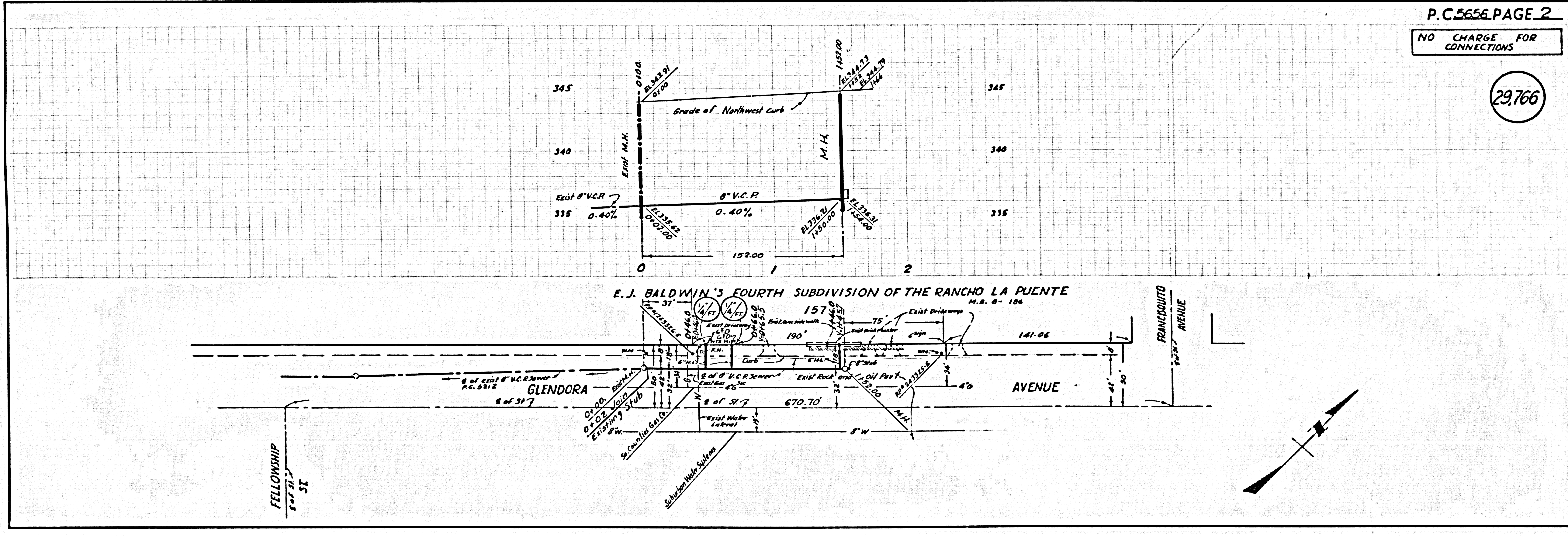
NOTE:
 GRADES TO WHICH THIS IMPROVEMENT IS TO BE CONSTRUCTED ARE SHOWN ON PLANS AND PROFILES. GRADE POINTS FOR TOP OF CURBS, CENTER LINE OF STREETS, OR CENTER LINE OF ALLEYS ARE SHOWN BY CIRCLES ON PROFILES AT ALL POINTS BETWEEN DESIGNATED POINTS. THE GRADE SHALL BE ESTABLISHED SO AS TO CONFORM TO A STRAIGHT LINE DRAWN BETWEEN SAID DESIGNATED POINTS.
 ELEVATIONS ARE IN FEET ABOVE U.S.C. & G.S. SEA LEVEL DATUM OF 1929.
 THIS DRAWING AND THE DATA HEREON ARE HEREBY MADE A PART OF THE SPECIFICATIONS AND SHALL BE CONSIDERED ACCORDING TO SPECIFICATIONS ON FILE IN THE OFFICE OF THE CITY ENGINEER AND SHALL BE PROSECUTED ONLY IN THE PRESENCE OF THE CITY ENGINEER.
 BEFORE WORK CAN BE STARTED THE CONTRACTOR MUST OBTAIN A PERMIT TO OCCUPY CITY STREETS FROM THE L.A. COUNTY ROAD DEPT., DISTRICT OFFICE NO. 1 AND PAY A FEE TO THE CITY OF LA PUENTE 1597 MAIN STREET SUFFICIENT TO COVER THE COST OF CONSTRUCTION INSPECTION AND RECORD PLANS.
 APPROVAL OF THIS PLAN BY THE CITY OF LA PUENTE DOES NOT CONSTITUTE A REPRESENTATION AS TO THE ACCURACY OF THE LOCATION OF OR THE EXISTENCE OR NON-EXISTENCE OF ANY UNDERGROUND UTILITY PIPE, OR STRUCTURE WITHIN THE LIMITS OF THIS PROJECT. THIS NOTE APPLIES TO ALL PAGES.
 IF WORK IS TO BE DONE IN A STATE HIGHWAY, A PERMIT MUST BE OBTAINED FROM THE STATE OF CALIFORNIA, DIVISION OF HIGHWAYS, 126 SOUTH SPRING STREET.

APPROVED, JOHN A. LAMBIE, CITY ENGINEER
 APPROVED, C.B. COMPTON, CHIEF ENGINEER
 BY: E.E. [Signature] ASST SANITATION ENGINEER
 GORDON L. [Signature] CITY ENGINEER
 CHECKED BY: [Signature] OFFICE OF CITY ENGINEER, REG. C. E. NO. 346

SUBMITTED: W.C. Poindexter 9-19-60
 SAN DIMAS REGIONAL ENGINEER

NO CHARGE FOR CONNECTIONS

29766



U.S. GEOLOGICAL SURVEY