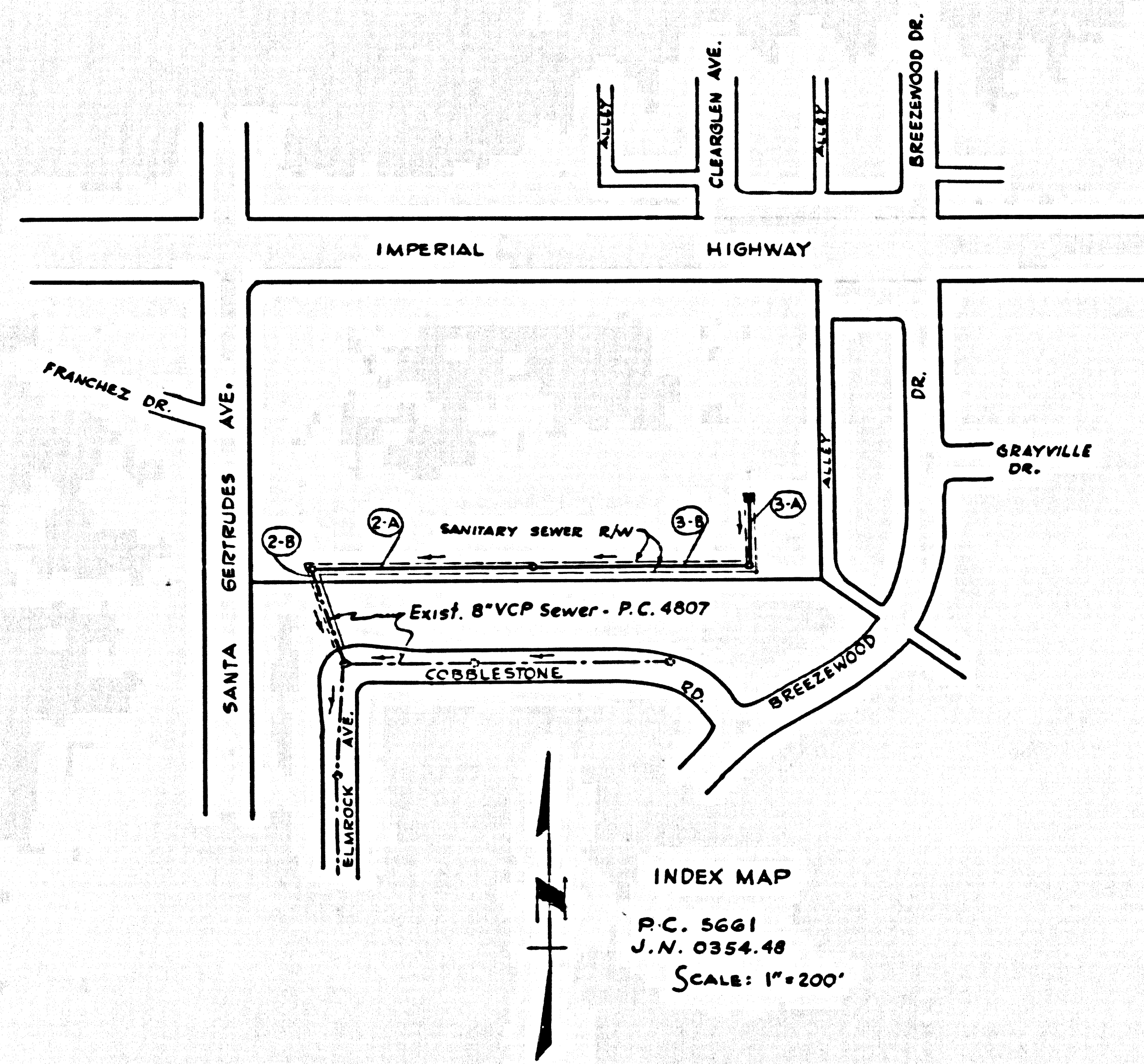


D.M.S.Y. 1140 ELEV. 253.541
 L. & N. Ctr. Conc. Hdwl. ±30' N.
 of ½ IMPERIAL HWY. & 150' W. OF
 ½ SANTA GERTRUDES AVE.
 LA MIRADA QUAD. (1955 ADJ.)



NORWALK BLDG. DIST. NO. 4.2

PROFILE ALIGNMENT AND GRADE OF **P.C. 5661**
SANITARY SEWERS PAGE **1**
 TO BE CONSTRUCTED IN J.N. 0354.48

RIGHT OF WAY
EAST OF SANTA GERTRUDES AVE.
PRIVATE CONTRACT NO. 5661

W.S. 34
 2 SHEETS; 3 PAGES

SCALE: VERT. 1"=4'
 HORIZ. 1"=40'

NOV. 1960
 PREPARED IN THE OFFICES OF
BARNETT, HOPEN, SMITH & SALIT
 CIVIL ENGINEERS AND LAND SURVEYORS
 BY: *Arnold G. Farnett*
 REG. C. E. NO. 1216

30399

FOR LEGEND SEE PLAN NO. S-A-44

- NOTES**
1. PROVIDE STAKES ON THE PROPERTY LINE OR PROPERTY LINES PRODUCED AT RIGHT ANGLES TO THE SEWER LINE AT THE CENTER LINE OF EACH MANHOLE.
 2. NO REPRESENTATIVE OF THE COUNTY ENGINEER WILL SURVEY OR LAY OUT ANY PORTION OF THE WORK.
 3. THE OWNER OR HIS AUTHORIZED REPRESENTATIVE SHALL FURNISH THE COUNTY ENGINEER WITH GRADE SHEETS AND STATIONING FOR ALL HOUSE LATERALS AND Y BRANCHES AND SHALL PROVIDE STAKES FOR THEM AT THEIR PROPER LOCATIONS WITH STATIONING PLAINLY MARKED. ANY CHANGE IN LOCATION SHALL BE REQUESTED IN WRITING BY THE OWNER OR HIS REPRESENTATIVE.
 4. THE PRIVATE ENGINEER SHALL FURNISH THE HOUSE LATERAL DEPTH AT THE PROPERTY LINE BELOW THE TOP OF CURB ELEVATION FOR EACH HOUSE LATERAL ON THE GRADE SHEET.
 5. NO REVISIONS SHALL BE MADE IN THESE PLANS WITHOUT THE APPROVAL OF THE COUNTY ENGINEER.
 6. USE STANDARD MANHOLE FRAMES AND COVERS, S-117, EXCEPT AS NOTED.
 7. USE STANDARD STRENGTH PIPE EXCEPT AS NOTED.
 8. USE CEMENT MORTAR OR "WEDGE-LOCK" OR "SPEED-SEAL" FOR ALL V.C.P. JOINTS PER SPEC'S, SECS. M & N.
 9. RESURFACE ALL TRENCH WITHIN PAVED AREA TO MEET L.A. COUNTY ROAD DEPT. OR CALIF. STATE HIGHWAY REQUIREMENTS IN ACCORDANCE WITH PERMITS.
 10. ENCASE FOUR FEET OF SEWER AT POINTS OF INTERFERENCE WITH POLES, CASE III, S-a-172.
 11. HOUSE LATERALS TO BE CONSTRUCTED WITH MINIMUMS AT PROPERTY LINE. FEET BELOW GRADE SHEET AS NOTED.
 12. ALL STRUCTURES SHALL BE BRICK SEWER STRUCTURES, S-104, EXCEPT AS NOTED.
 13. FOR ALLOWABLE LEAKAGE TEST USE FORMULA NO. 1, SPEC'S, SEC. 84.
 14. MANHOLE TOPS IN UNIMPROVED RIGHTS-OF-WAY TO BE LEVEL WITH FINISHED GRADE.
 15. THE CONTRACTOR SHALL NOTIFY THE CONSTRUCTION PERMITS DIVISION BY TELEPHONE, MADISON 5-478, EXT. 81-82, AT LEAST TWENTY-FOUR HOURS BEFORE STARTING ANY WORK UNDER THIS CONTRACT.
 16. STANDARD SPECIFICATIONS DATED OCTOBER 10, 1960 APPLY IN THE CONSTRUCTION OF THIS PROJECT.

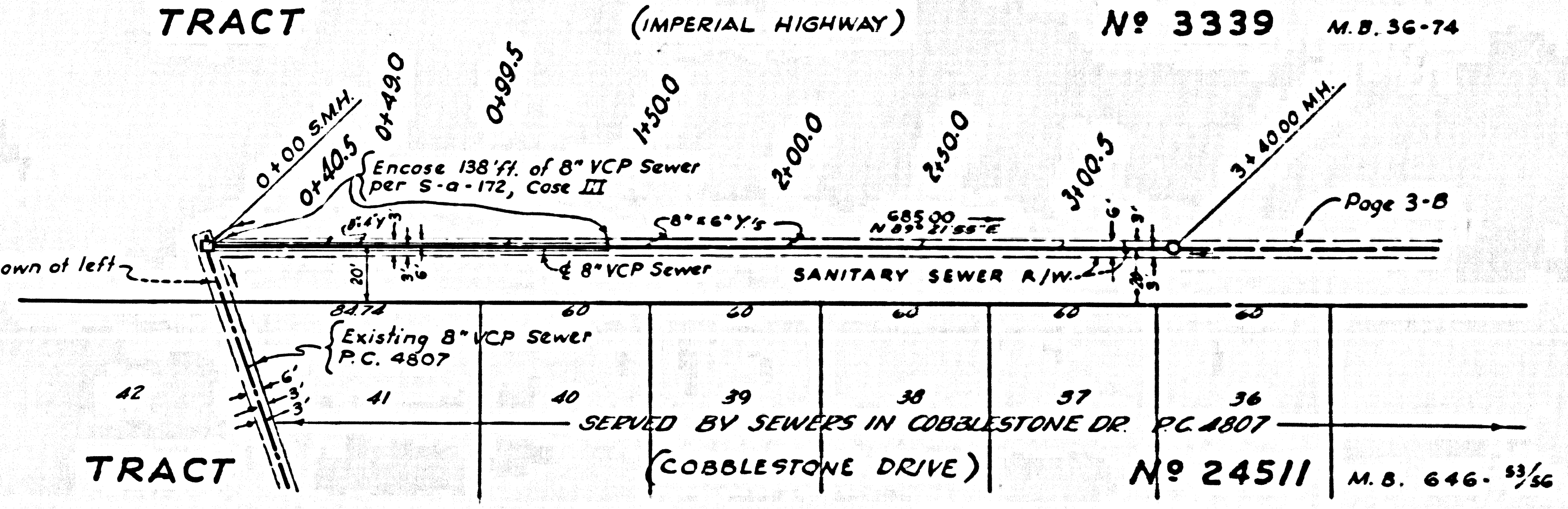
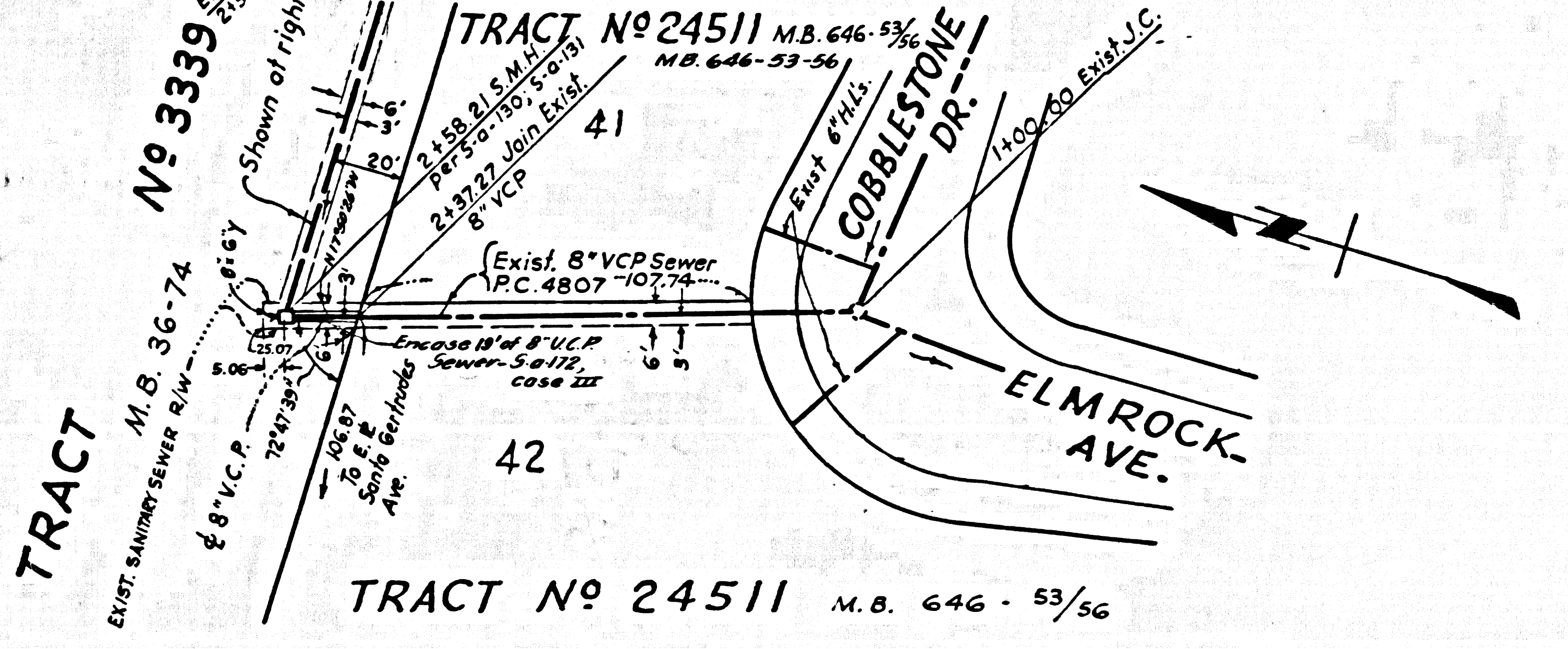
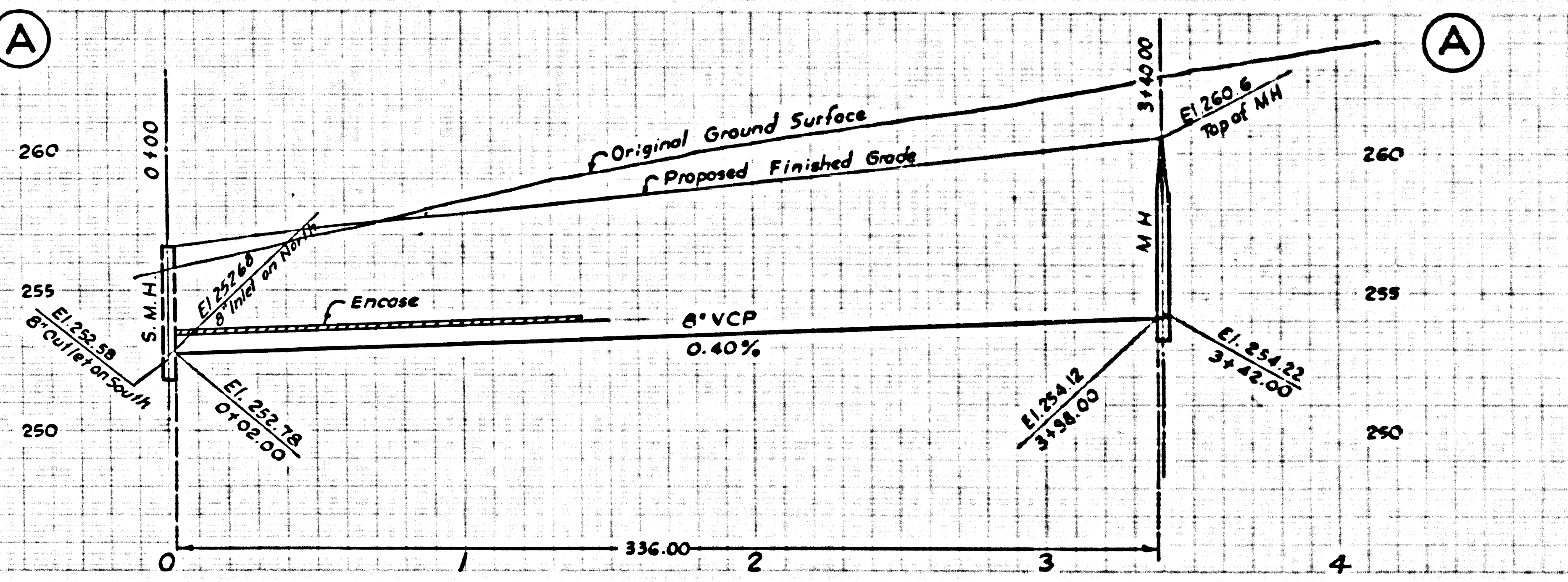
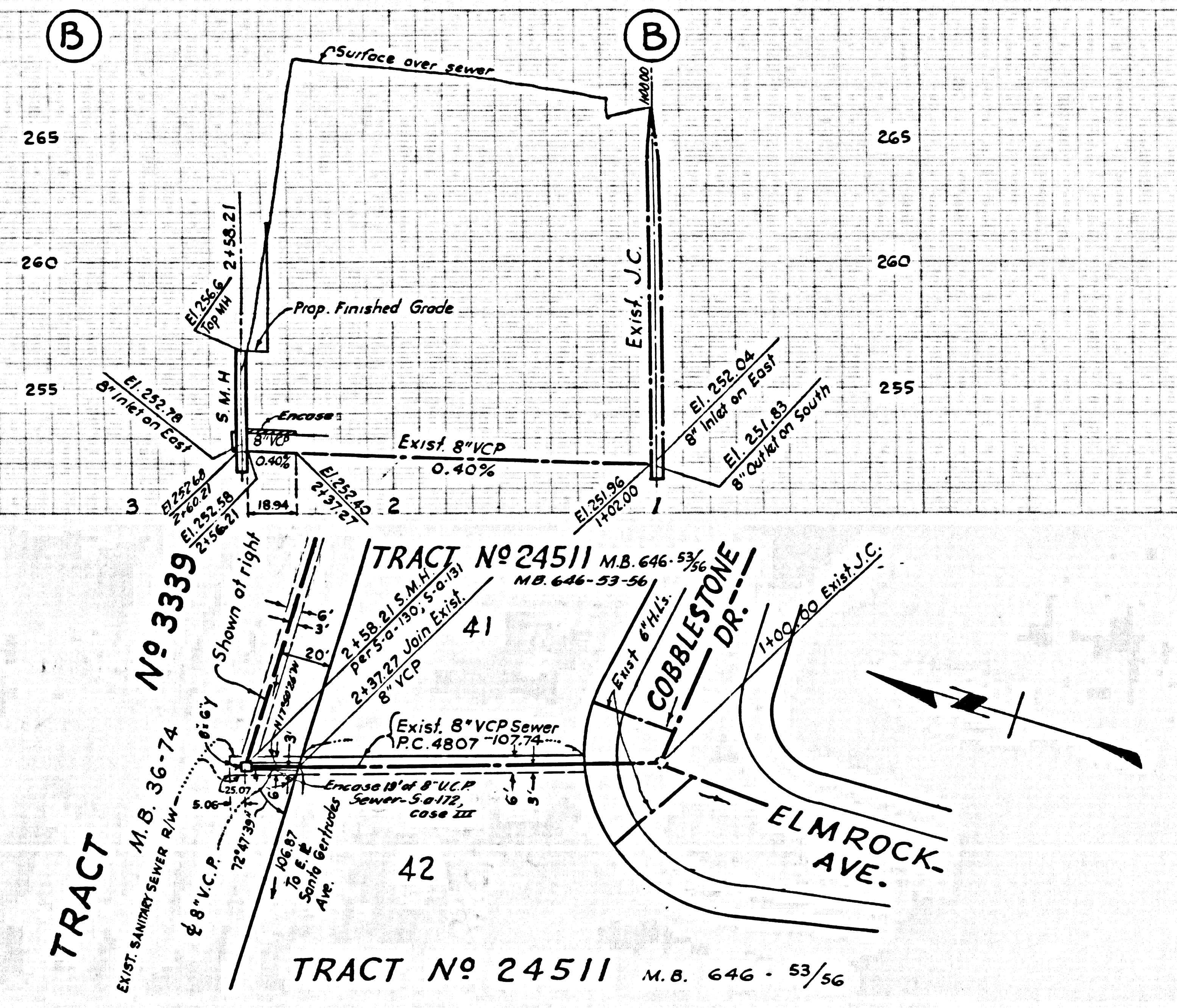
NO CONNECTIONS FOR THE DISPOSAL OF INDUSTRIAL WASTES SHALL BE MADE TO SEWERS SHOWN ON THESE DRAWINGS WITHOUT WRITTEN PERMISSION FROM THE CHIEF ENGINEER AND GENERAL MANAGER OF THE COUNTY SANITATION DISTRICTS.

NO CHARGE FOR CONNECTIONS

NO CONNECTIONS FOR THE DISPOSAL OF INDUSTRIAL WASTES SHALL BE MADE TO SEWERS SHOWN ON THESE DRAWINGS WITHOUT WRITTEN PERMISSION FROM THE INDUSTRIAL WASTE DIVISION OF THE COUNTY ENGINEER.

APPROVED BY: *Robert A. Moore*
 INDUSTRIAL WASTE DIVISION

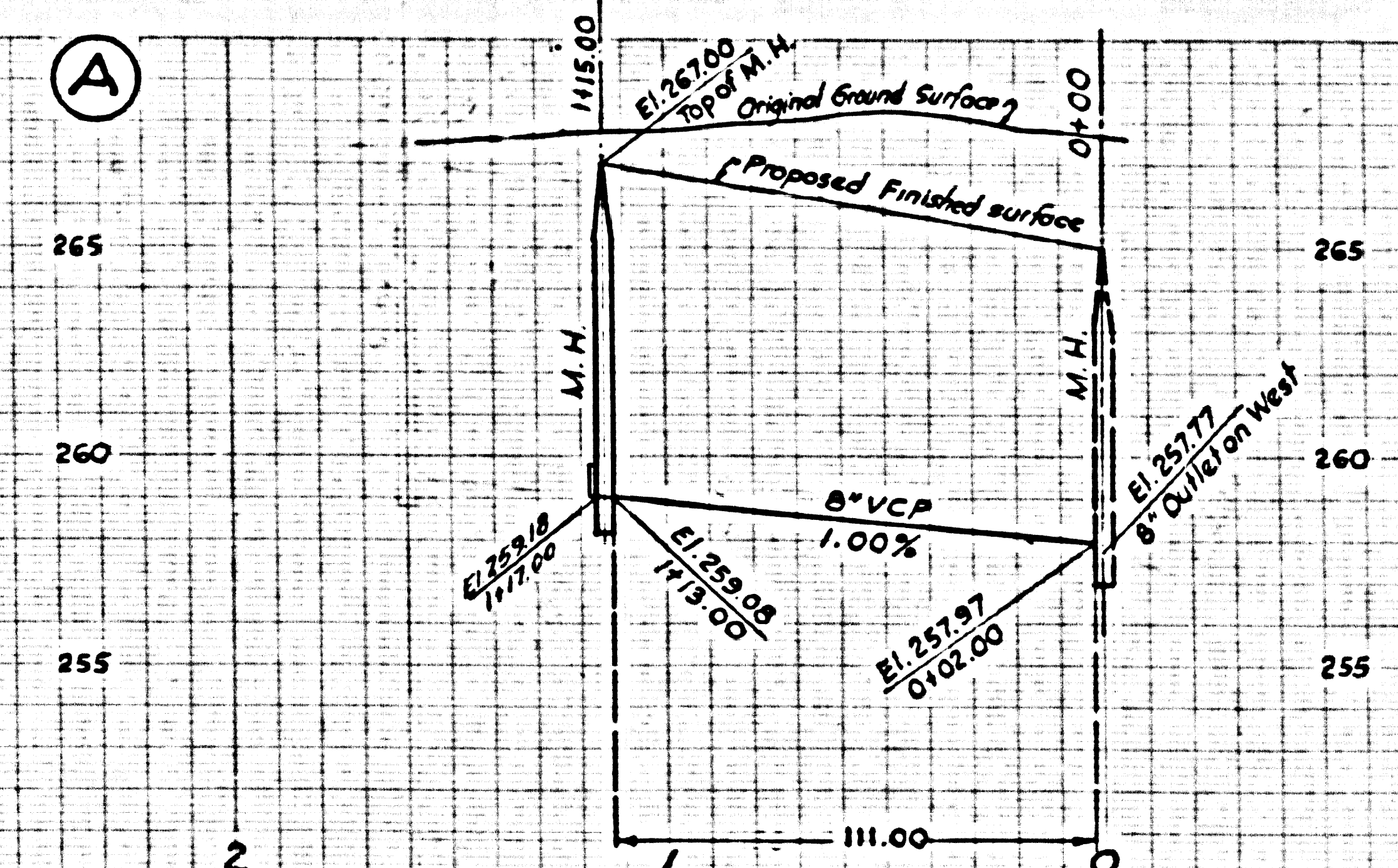
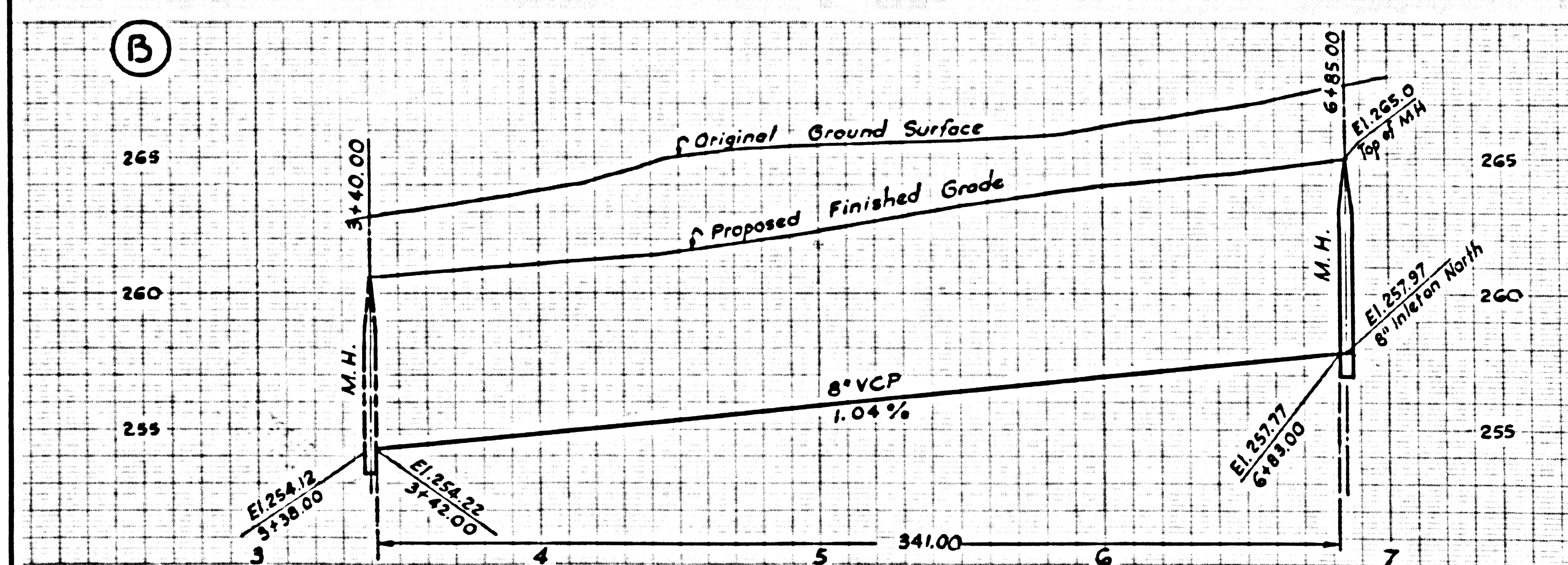
COUNTY OF LOS ANGELES, CALIFORNIA
 APPROVED, JOHN A. LAMBE, COUNTY ENGINEER APPROVED, C.R. COMPTON, CHIEF ENGINEER
 CO-SAL DIST. NO. 18
 BY: *E.E. Farnett* BY: *A. J. ...*
 ASSISTANT SANITATION ENGINEER OFFICE ENGINEER
 CHECKED BY: *St. ...*
 OFFICE OF COUNTY ENGINEER, REG. C. E. NO. 3406
 SUBMITTED BY: *...*
 LOS CERRITOS REGIONAL ENGINEER, REG. C.E. 3871



P.C. 5661 PAGE 2

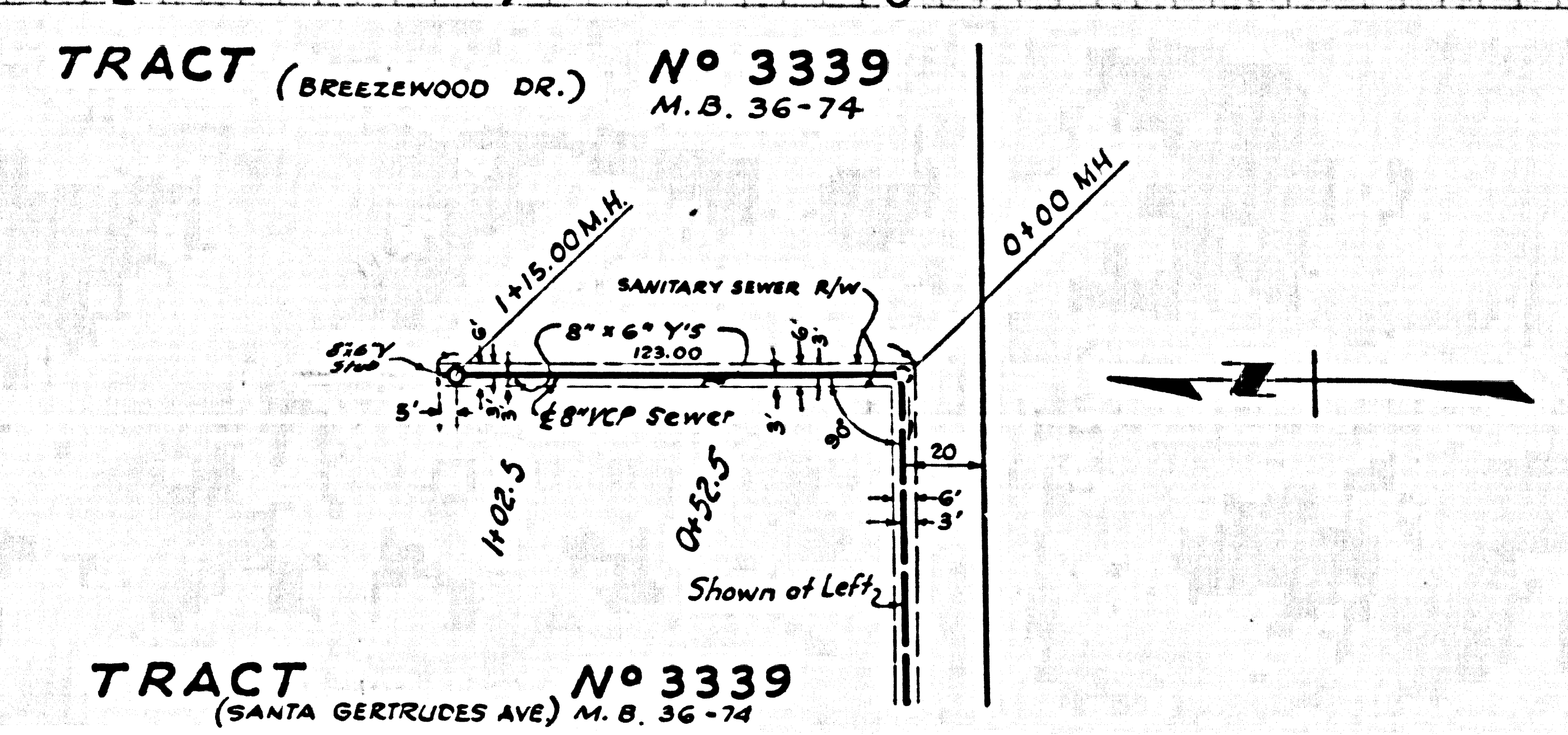
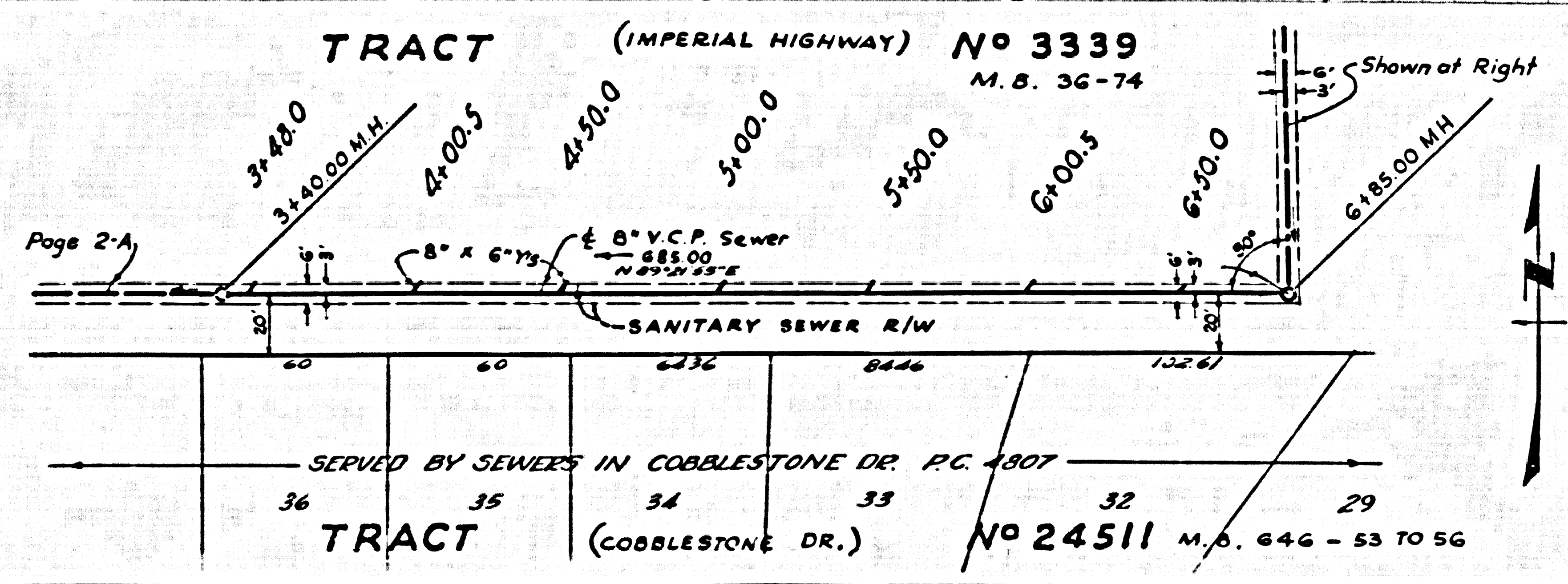
NO CHARGE FOR CONNECTIONS

30400



NO CHARGE FOR CONNECTIONS

30401



12270