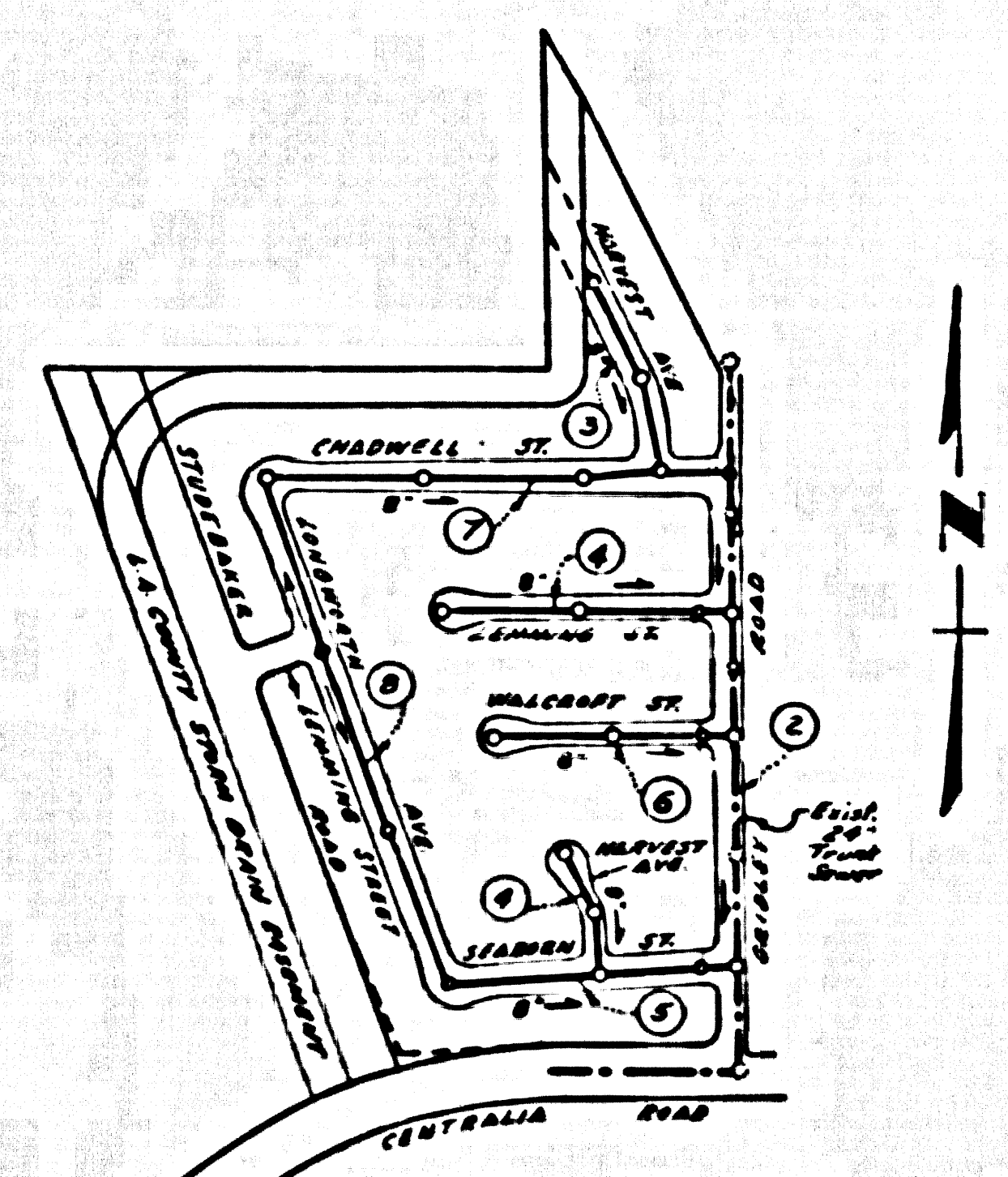


BENCH MARK:
 3V-3385
 5th Man. (County Surveyor's)
 in wall with cover at E. inf.
 Del Amo & Pioneer Blvd.
 ELEV. 38.275 ARTESIA QUAD. 1955



INDEX MAP
 TRACT NO. 24797 - P.C. 5662
 SCALE: 1" = 400'

LAKEWOOD BLDG. DIST. NO. 4.3

PROFILE ALIGNMENT AND GRADE OF **P.C. 5662**
SANITARY SEWERS PAGE 1
 TO BE CONSTRUCTED IN **J.N. 035489**

TRACT No 24797

PRIVATE CONTRACT NO. 5662

W.S. 31
 4 SHEETS; 8 PAGES

30245

SCALE: VERT. 1" = 4'
 HORIZ. 1" = 40'
 OCTOBER, 1960
 PREPARED IN THE OFFICES OF

ROSENTHAL ENGINEERING CO.

By *G. E. Rosenthal*
 REG. C. E. NO. 2200

FOR LEGEND SEE PLAN NO. S-A-44

- NOTES:**
1. PROVIDE STAKES ON THE PROPERTY LINE OR PROPERTY LINES PRODUCED AT RIGHT ANGLES TO THE SEWER LINE AT THE CENTER LINE OF EACH MANHOLE.
 2. NO REPRESENTATIVE OF THE COUNTY ENGINEER WILL SURVEY OR LAY OUT ANY PORTION OF THE WORK.
 3. THE OWNER OR HIS AUTHORIZED REPRESENTATIVE SHALL FURNISH THE COUNTY ENGINEER WITH GRADE SHEETS AND STATIONING FOR ALL HOUSE LATERALS AND Y BRANCHES AND SHALL PROVIDE STAKES FOR THEM AT THEIR PROPER LOCATIONS WITH STATIONING PLAINLY MARKED. ANY CHANGE IN LOCATION SHALL BE REQUESTED IN WRITING BY THE OWNER OR HIS REPRESENTATIVE.
 4. THE PRIVATE ENGINEER SHALL FURNISH THE HOUSE LATERAL DEPTH AT THE PROPERTY LINE BELOW THE TOP OF CURB ELEVATION FOR EACH HOUSE LATERAL ON THE GRADE SHEET.
 5. NO REVISIONS SHALL BE MADE IN THESE PLANS WITHOUT THE APPROVAL OF THE COUNTY ENGINEER.
 6. USE STANDARD MANHOLE FRAMES AND COVERS, S-111, EXCEPT AS NOTED.
 7. USE STANDARD STRENGTH PIPE EXCEPT AS NOTED.
 8. USE "WEDGE-LOCK" OR "SPREAD-SEAL" FOR ALL V.C.P. JOINTS PER SPEC'S, SECS. 31 & 41.
 9. RESURFACE ALL TRENCH WITHIN PAVED AREA TO MEET L.A. COUNTY ROAD DEPT. OR CALIF. STATE HIGHWAY REQUIREMENTS IN ACCORDANCE WITH PERMITS.
 10. ENCASE FOUR FEET OF SEWER AT POINTS OF INTERFERENCE WITH POLES, CASE III S-172.
 11. HOUSE LATERALS TO BE CONSTRUCTED WITH INVERTS AT PROPERTY LINE 6 FEET BELOW CURB GRADE EXCEPT AS NOTED.
 12. ALL STRUCTURES SHALL BE BRICK SEWER STRUCTURES, S-104, EXCEPT AS NOTED.
 13. FOR ALLOWABLE LEAKAGE TEST USE FORMULA NO. 2, SPEC'S, SEC. 54.
 14. MANHOLE TOPS IN UNIMPROVED RIGHTS-OF-WAY TO BE SIX INCHES ABOVE FINISHED GRADE.
 15. THE CONTRACTOR SHALL NOTIFY THE CONSTRUCTION DIVISION BY TELEPHONE, MADISON 5-49, EXT. 81-51, AT LEAST TWENTY-FOUR HOURS BEFORE STARTING ANY WORK UNDER THIS CONTRACT.
 16. STANDARD SPECIFICATIONS DATED OCTOBER 1950 APPLY IN THE CONSTRUCTION OF THIS PROJECT.
 17. BEFORE CREATING ANY EXISTING STRUCTURE AND BEFORE ANY ACCEPTANCE OF THIS WORK, COUNTY SANITATION DISTRICT (DWS-281) SHALL BE NOTIFIED IN ORDER THAT REQUIRED INSPECTION CAN BE MADE.

NO CHARGE FOR CONNECTIONS

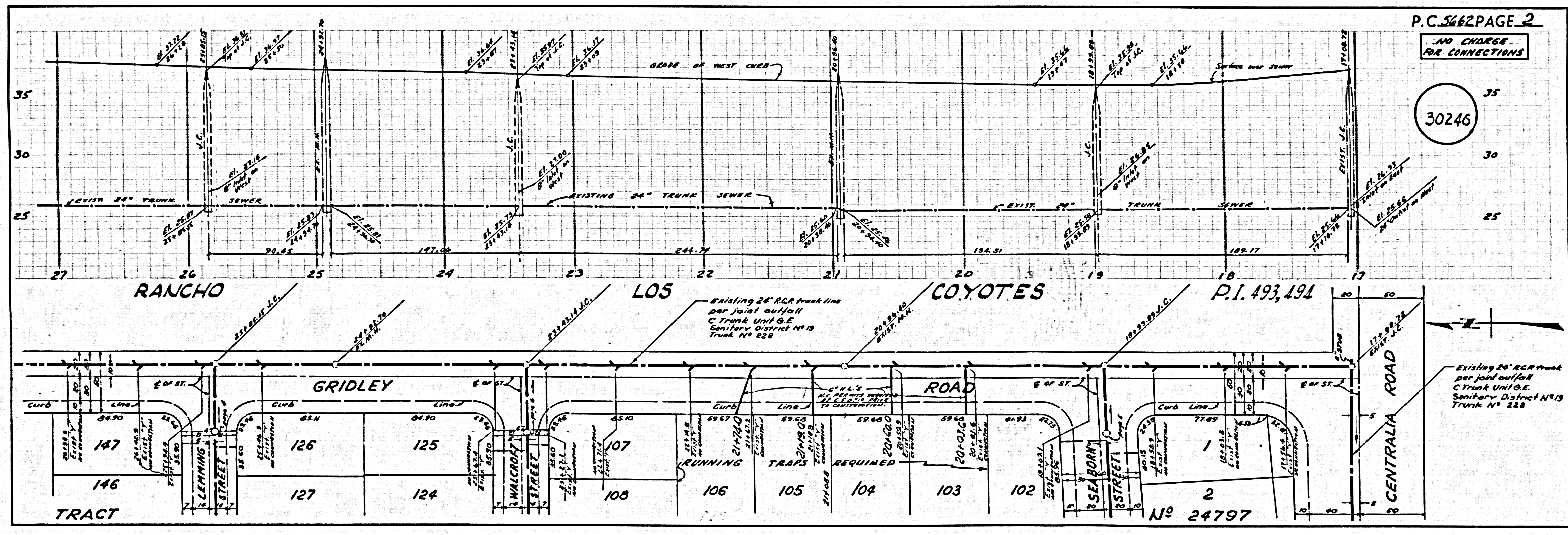
J. S. Hickland 11-19-60

NOTE:
 GRADES TO WHICH THIS IMPROVEMENT IS TO BE CONSTRUCTED ARE SHOWN ON PLANS AND PROFILE GRADE POINTS FOR TOP OF CURBS, CENTER LINE OF STREETS OR CENTER LINE OF ALLEYS ARE SHOWN BY CIRCLES ON PROFILES AT ALL POINTS BETWEEN DESIGNATED POINTS THE GRADE SHALL BE ESTABLISHED SO AS TO CONFORM TO A STRAIGHT LINE DRAWN BETWEEN SAID DESIGNATED POINTS.
 ELEVATIONS ARE IN FEET ABOVE U.S.C. & G.S. SEA LEVEL BATHY OF 1929.
 THIS DRAWING AND THE DATA HEREON ARE HEREBY MADE A PART OF THE SPECIFICATIONS.
 WORK SHALL BE CONSTRUCTED ACCORDING TO SPECIFICATIONS ON FILE IN THE OFFICE OF THE COUNTY ENGINEER AND SHALL BE PROSECUTED ONLY IN THE PRESENCE OF THE COUNTY ENGINEER.
 BEFORE WORK CAN BE STARTED THE CONTRACTOR MUST OBTAIN A PERMIT TO EXCAVATE IN COUNTY STREETS FROM THE L.A. COUNTY ROAD DEPT., DISTRICT OFFICE NO. 4 AND PAY A FEE WITH THE COUNTY ENGINEER ROOM, 330 PAVAN AMERICAN BUILDING, 333 SO. BROADWAY SUFFICIENT TO COVER THE COST OF CONSTRUCTION INSPECTION AND SECOND PLANS.
 APPROVAL OF THIS PLAN BY THE COUNTY OF LOS ANGELES DOES NOT CONSTITUTE A REPRESENTATION AS TO THE ACCURACY OF THE LOCATION OF OR THE EXISTENCE OR NON-EXISTENCE OF ANY UNDERGROUND UTILITY PIPES, OR STRUCTURE WITHIN THE LIMITS OF THIS PROJECT. THIS NOTE APPLIES TO ALL PAGES.
 IF WORK IS TO BE DONE IN A STATE HIGHWAY, A PERMIT MUST BE OBTAINED FROM THE STATE OF CALIFORNIA, DIVISION OF HIGHWAYS, 128 SOUTH SPRING STREET.

COUNTY OF LOS ANGELES, CALIFORNIA

APPROVED, JOHN A. LAMBIE, COUNTY ENGINEER
 APPROVED, E. R. Campbell, CHIEF ENGINEER
 By *E. E. Rosenthal* ASSISTANT SANITATION ENGINEER
 By *J. S. Hickland* CHIEF ENGINEER
 CHECKED BY *J. K. O'Brien* 11-31-60
 OFFICE OF COUNTY ENGINEER, REG. C. E. NO. 3444

Submitted by *John S. Hickland* 11-19-60
 126 CERRITOS REGIONAL ENGINEER, C.E. NO. 3871



P.C. 5662 PAGE 2

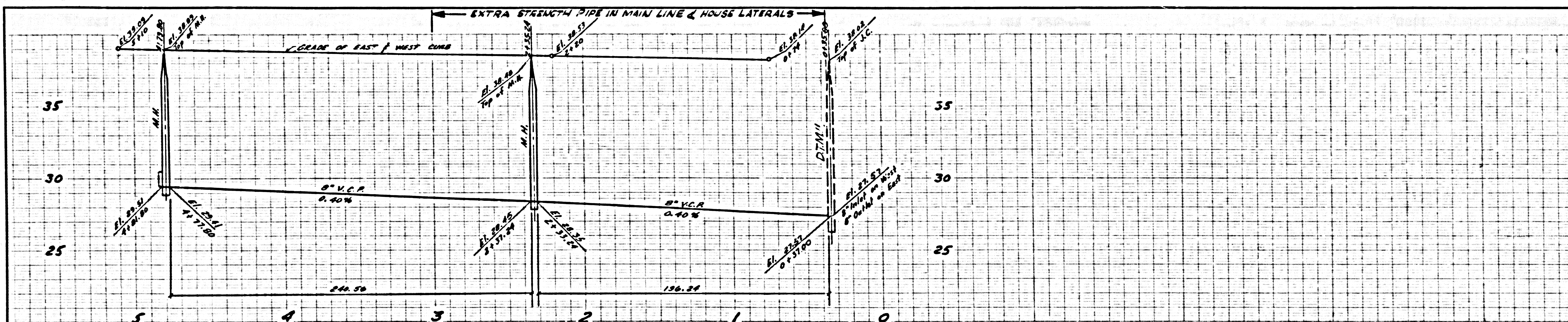
NO CHARGE FOR CONNECTIONS

30246

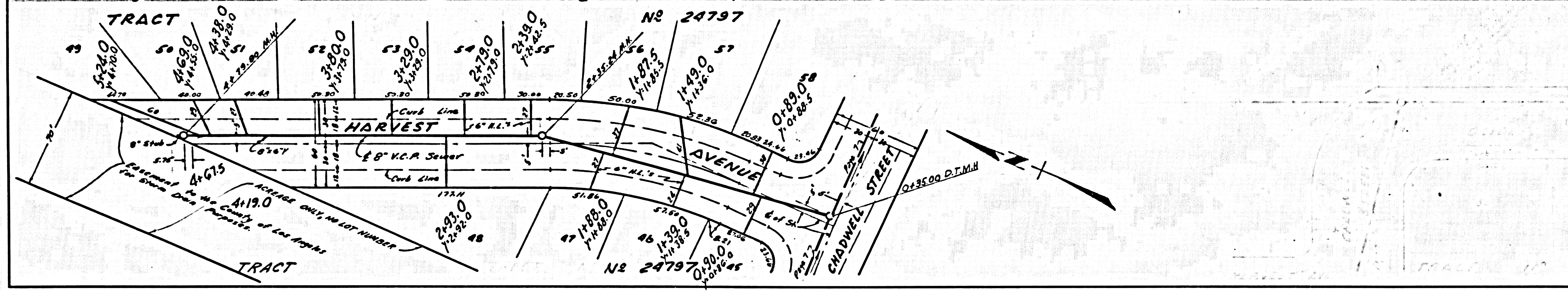
P.I. 193, 194

No 24797

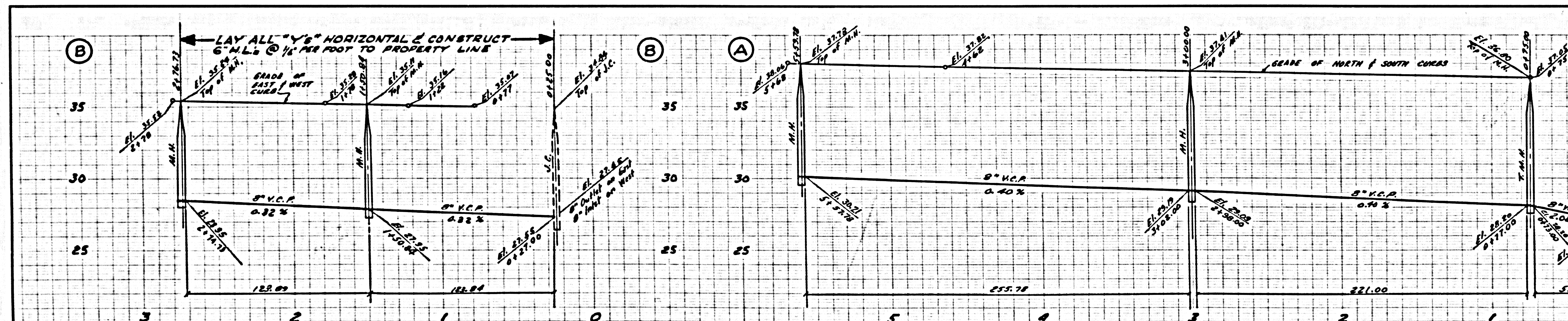
NO CHARGE FOR CONNECTIONS



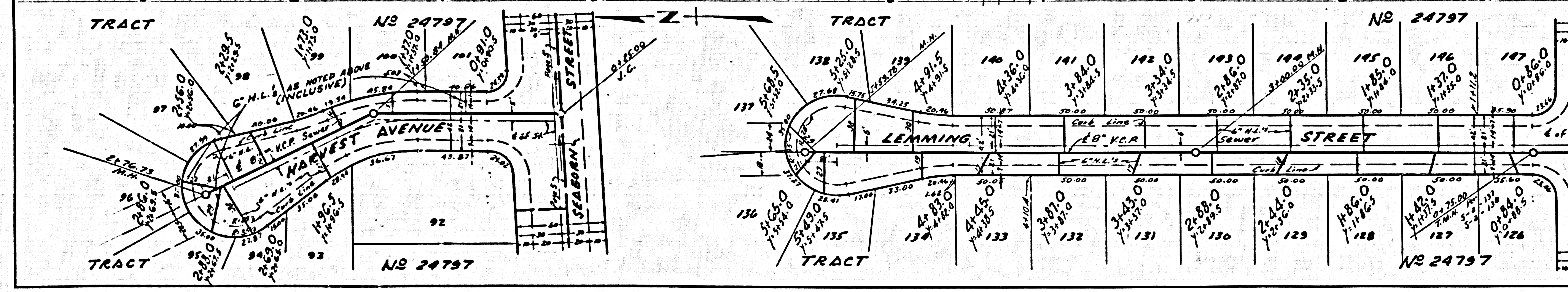
30247



NO CHARGE FOR CONNECTIONS

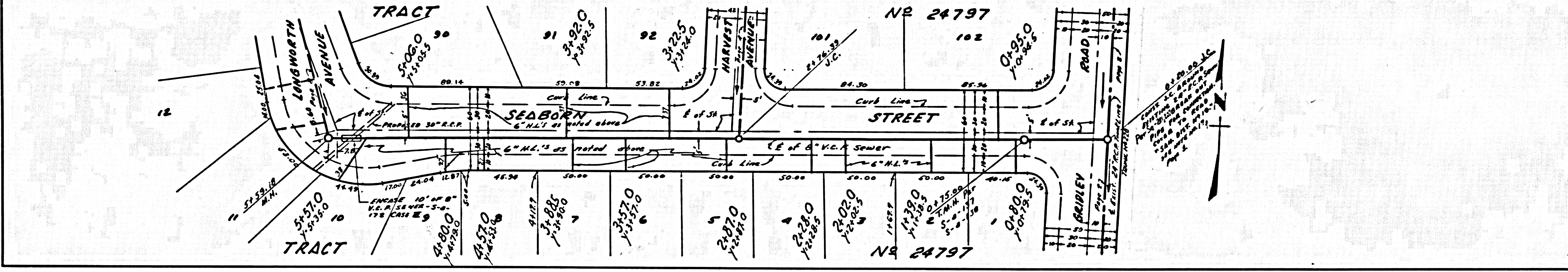
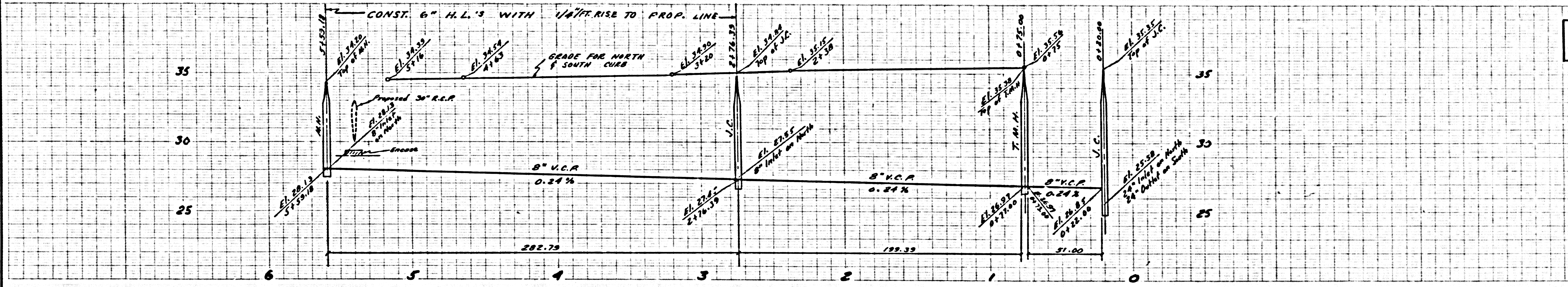


30248



NO CHARGE FOR CONNECTIONS

30249



NO CHARGE FOR CONNECTIONS

30250

