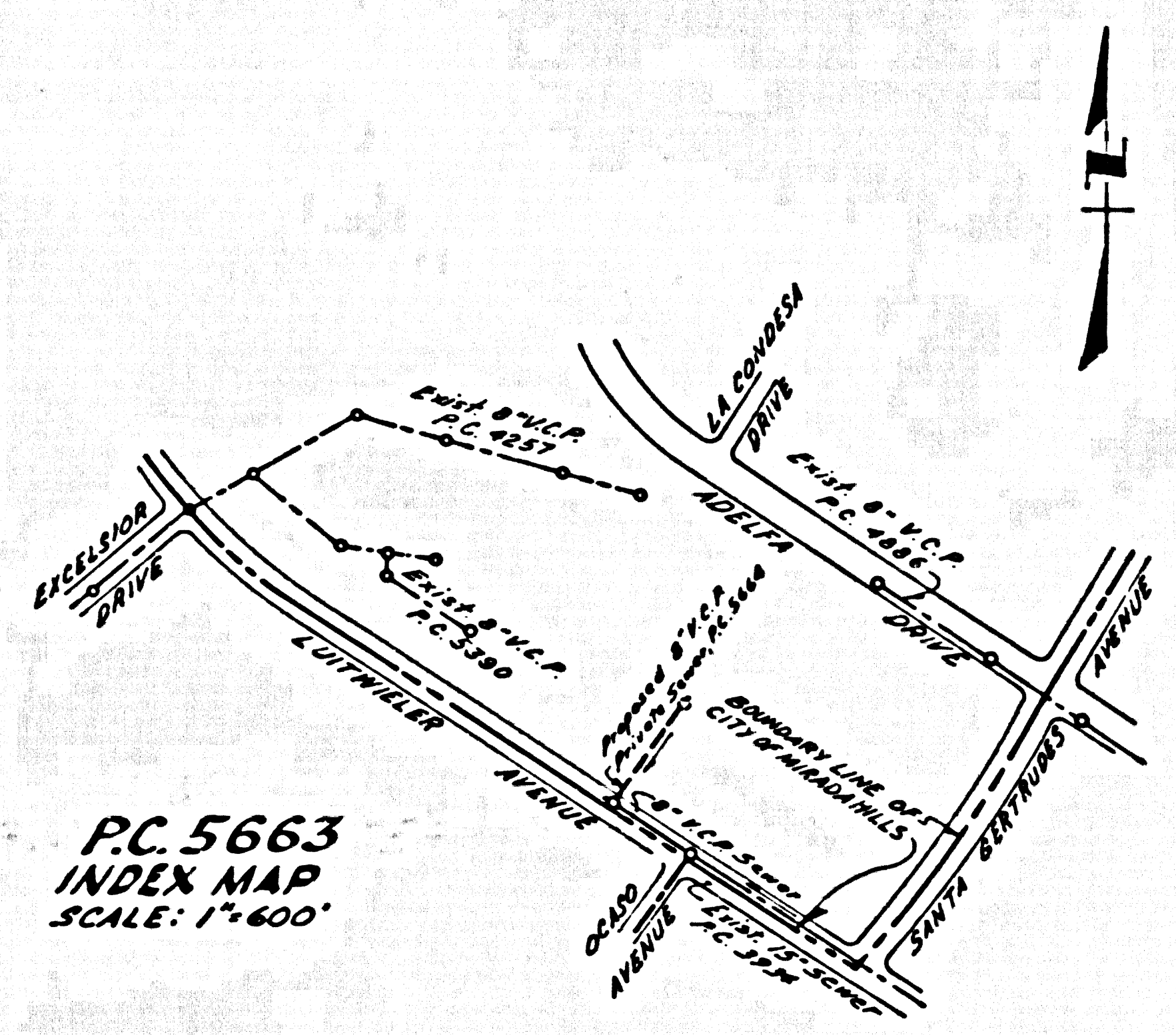


BENCH MARK:
 B.M. 3-2 STD. CO. SURVEY MON. MARKED SET IN CONCRETE
 16" BELOW SURFACE ON APPROX. E. OF LUTWIELER AVE. E. 78' 2"
 NORTH OF E. OF STABLE RD. IN WELL PROTECTED BY CAST
 IRON COVER PER C.S.F.D. 1204-B LOS ANGELES COUNTY 1958
 ADJ. ELEVATION 1096.2



PC 5663
 INDEX MAP
 SCALE: 1"=600'

MIRADA HILLS BLDG. DIST. NO. 4.08

PROFILE ALIGNMENT AND GRADE OF P.C. 5663
SANITARY SEWERS PAGE 1
 TO BE CONSTRUCTED IN
LUITWIELER AVENUE

PRIVATE CONTRACT NO. 5663

W.S. 34
 1 SHEET 2 PAGES

SCALE: HORIZ. 1"=40' VERT. 1"=4' AUG, 1960
 PREPARED IN THE OFFICES OF

McINTIRE & QUIROS, INC.
 BY: *John Quiros* 10/21/60
 REG. C. E. NO. 2540

30,000

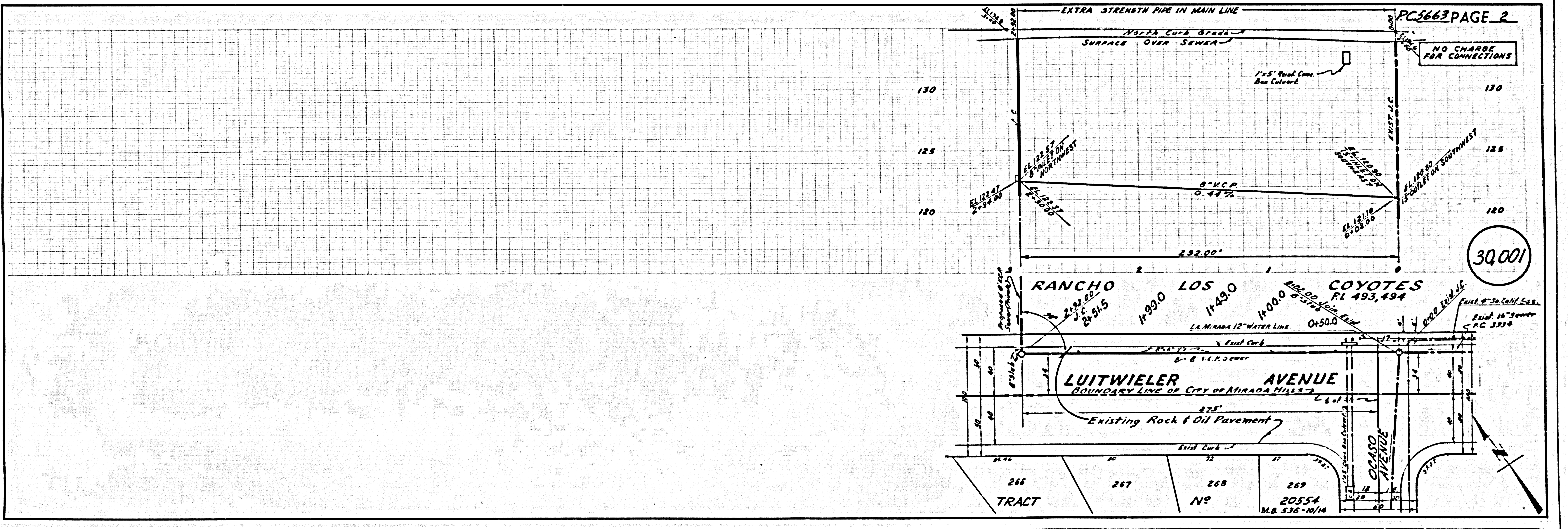
FOR LEGEND SEE PLAN NO. S.A-64

- NOTES:**
1. PROVIDE STAKES ON THE PROPERTY LINE OR PROPERTY LINES PRODUCED AT RIGHT ANGLES TO THE SEWER LINE AT THE CENTER LINE OF EACH MANHOLE.
 2. NO REPRESENTATIVE OF THE CITY ENGINEER WILL SURVEY OR LAY OUT ANY PORTION OF THE WORK.
 3. THE OWNER OR HIS AUTHORIZED REPRESENTATIVE SHALL FURNISH THE CITY ENGINEER WITH GRADE SHEETS AND STATIONING FOR ALL HOUSE LATERALS AND Y BRANCHES AND SHALL PROVIDE STAKES FOR THEM AT THEIR PROPER LOCATIONS WITH STATIONING PLAINLY MARKED. ANY CHANGE IN LOCATION SHALL BE REQUESTED IN WRITING BY THE OWNER OR HIS REPRESENTATIVE.
 4. THE PRIVATE ENGINEER SHALL FURNISH THE HOUSE LATERAL DEPTH AT THE PROPERTY LINE BELOW THE TOP OF CURB ELEVATION FOR EACH HOUSE LATERAL ON THE GRADE SHEET.
 5. NO REVISIONS WILL BE MADE IN THESE PLANS WITHOUT THE APPROVAL OF THE CITY ENGINEER.
 6. USE STANDARD MANHOLE FRAMES AND COVERS, S.G. 1174
 7. USE STEEL STRENGTH PIPE
 8. USE CAMBRET MORTAR OR "WEDGELOCK" OR "SPED-SEAL" FOR ALL V.C.P. JOINTS PER SPEC'S, SECT. 36 B. 4.
 9. RESURFACE ALL TRENCH WITH DRYED AREA TO MEET L.A. COUNTY ROAD B.C.P. OR CALIF. STATE HIGHWAY REQUIREMENTS IN ACCORDANCE WITH PERMITS.
 10. ENCASE FOUR FEET OF SEWER AT POINTS OF INTERFERENCE WITH POLES, CASE NO. S-173.
 11. STANDARD SPECIFICATIONS DATED OCTOBER 10, 1960, ON FILE IN CITY HALL APPLY IN THE CONSTRUCTION OF THIS PROJECT.
 12. ALL STRUCTURES SHALL BE BRICK SEWER STRUCTURES, S-104.
 13. FOR ALLOWABLE LEAKAGE TEST USE FORMULA NO. 1 SPEC'S, SEC. 84.
 14. MANHOLE TOPS IN UNIMPROVED RIGHTS-OF-WAY TO BE SIX INCHES ABOVE FINISHED GRADE.
 15. THE CONTRACTOR SHALL NOTIFY THE CONSTRUCTION DIVISION BY TELEPHONE, MADISON 9-4141, EXT. 8-5511 AT LEAST TWENTY-FOUR HOURS BEFORE STARTING ANY WORK UNDER THIS CONTRACT.
- THE CONTRACTOR SHALL SATISFY HIMSELF OF ALL SUBSTRUCTURES AND SHALL BE RESPONSIBLE FOR THEIR LOCATION AND MAINTENANCE.

NO CONNECTION CHARGES
Ed. Dickhead 11/1/60

APPROVED BY: *Alvin M. ...* 11-18-60
 OFFICE OF INDUSTRIAL WASTE

CITY OF MIRADA HILLS, CALIFORNIA
 APPROVED, JOHN A. LAMBE, CITY ENGINEER APPROVED, C.R. COMPTON, CHIEF ENGINEER
 P.C.D. SAN. DIST. NO. 18
 BY: *C.E. ...* 11-21-60
 2517 SANITATION ENGINEER OFFICE ENGINEER
 CHECKED BY: *3/6 ...* 11-21-60
 OFFICE OF CITY ENGINEER, REG. C. E. NO. 2426
 SUBMITTED BY: *John L. ...* 11-12-60
 LOS CERRITOS REGIONAL ENGINEER, REG. C.E. NO. 3871



30,001