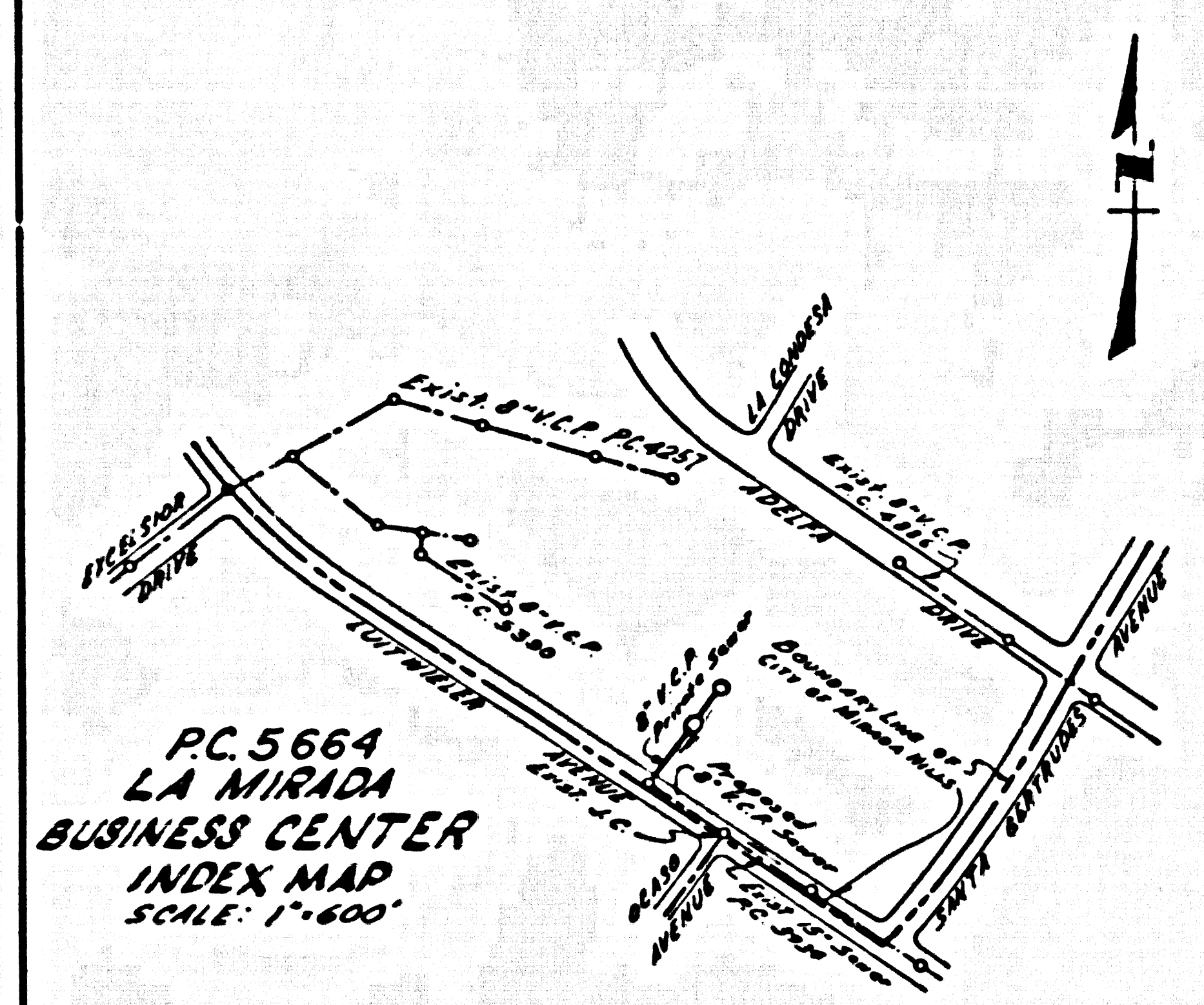


BENCH MARK:
 DN-32 STD. CO. SURVEY MON. MARKED SET IN CONCRETE
 16" BELOW SURFACE ON APPROX. E. OF LUITWILER AVE. E 78'±
 NORTH OF E. OF STAGE RD. IN WELL PROTECTED BY CAST
 IRON COVER. PER C.I.T.A. 104-6 LOS ANGELES COUNTY 1952
 A.D. ELEVATION 1098.8



MIRADA HILLS-BLDG. DIST. NO. 4.08

- NOTES:**
1. PROVIDE STAKES ON THE PROPERTY LINE OR PROPERTY LINES PRODUCED AT RIGHT ANGLES TO THE SEWER LINE AT THE CENTER LINE OF EACH MANHOLE.
 2. NO REPRESENTATIVE OF THE CITY ENGINEER WILL SURVEY OR LAY OUT ANY PORTION OF THE WORK.
 3. THE OWNER OR HIS AUTHORIZED REPRESENTATIVE SHALL FURNISH THE CITY ENGINEER WITH GRADE SHEETS AND STATIONING FOR ALL HOUSE LATERALS AND V BRANCHES AND SHALL PROVIDE STAKES FOR THEM AT THESE PROPER LOCATIONS WITH STATIONING PLAINLY MARKED. ANY CHANGE IN LOCATION SHALL BE REQUESTED IN WRITING BY THE OWNER OR HIS REPRESENTATIVE.
 4. THE PRIVATE ENGINEER SHALL FURNISH THE HOUSE LATERAL DEPTH AT THE PROPERTY LINE BELOW THE TOP OF CURB ELEVATION FOR EACH HOUSE LATERAL ON THE GRADE SHEET.
 5. NO REVISIONS SHALL BE MADE IN THESE PLANS WITHOUT THE APPROVAL OF THE CITY ENGINEER.
 6. USE STANDARD MANHOLE FRAMES AND COVERS, S-117, A.
 7. USE STANDARD STRENGTH PIPE EXCEPT AS NOTED.
 8. USE CEMENT MORTAR OR "WEDGE-LOCK" OR "SPEED-SEAL" FOR ALL V.C.P. JOINTS PER SPEC'S, SECS. M & M.
 9. RESURFACE ALL TRENCH WITHIN PAVED AREA TO MEET L.A. COUNTY ROAD DEPT. OR CALIF. STATE HIGHWAY REQUIREMENTS IN ACCORDANCE WITH PERMITS.
 10. EXCAVE FOUR FEET OF SEWER AT POINTS OF INTERFERENCE WITH POLES, CASE M, S-172.
 11. STANDARD SPECIFICATIONS DATED OCTOBER 10, 1960, ON FILE IN CITY HALL APPLY IN THE CONSTRUCTION OF THIS PROJECT.
 12. ALL STRUCTURES SHALL BE BRICK SEWER STRUCTURES, S-194.
 13. FOR ALLOWABLE LEAKAGE TEST USE FORMULA NO. 1, SPEC'S, SEC. 54.
 14. MANHOLE TOPS IN UNIMPROVED RIGHTS-OF-WAY TO BE LEVEL WITH FINISHED GRADE.
 15. THE CONTRACTOR SHALL NOTIFY THE CONSTRUCTION DIVISION BY TELEPHONE, MADISON 5-471, EXT. 81-51 AT LEAST TWENTY-FOUR HOURS BEFORE STARTING ANY WORK UNDER THIS CONTRACT.
 16. THE CONTRACTOR SHALL SATISFY HIMSELF OF ALL SUBSTRUCTURES AND SHALL BE RESPONSIBLE FOR THEIR LOCATION AND MAINTENANCE.

ISSUE NO PERMITS
 UNTIL P.C.5663
 IS ACCEPTED

NO CONNECTION
 CHARGES
 11-15-60

Approved By: *Nora Malloy* 11-15-60
 Office of Industrial Works

PROFILE ALIGNMENT AND GRADE OF **P.C.5664**
SANITARY SEWERS PAGE 1

TO BE CONSTRUCTED IN
**LA MIRADA
 BUSINESS CENTER
 (PRIVATE SEWER)**

PRIVATE CONTRACT NO. 5664

W.S.34
 1 SHEETS, 2 PAGES

SCALE: VERT. 1"=6'
 HORIZ. 1"=40'
 SEPT. 1960
 PREPARED IN THE OFFICES OF

30,002

MCINTIRE & QUIROS, INC.

By: *Alan Quiros* 10/16/60
 REG. C.E. NO. 3558

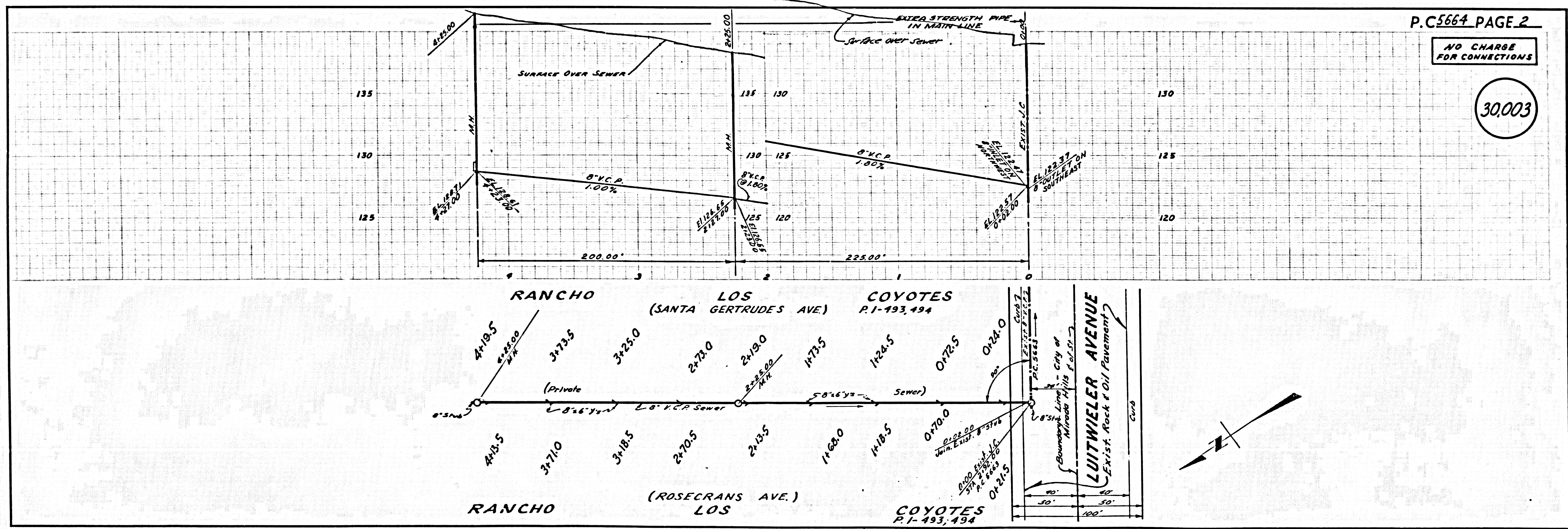
FOR LEGEND SEE PLAN NO. S-A-64

NOTE:
 GRADES TO WHICH THIS IMPROVEMENT IS TO BE CONSTRUCTED ARE SHOWN ON PLANS AND PROFILE GRADE POINTS FOR TOP OF CURBS, CENTER LINE OF STREETS, OR CENTER LINE OF ALLEYS ARE SHOWN BY CIRCLES ON PROFILES. AT ALL POINTS BETWEEN DESIGNATED POINTS THE GRADE SHALL BE ESTABLISHED SO AS TO CONFORM TO A STRAIGHT LINE DRAWN BETWEEN SAID DESIGNATED POINTS.
 ELEVATIONS ARE IN FEET ABOVE U.S.C. & G.S. SEA LEVEL DATUM OF 1929.
 THIS DRAWING AND THE DATA HEREON ARE HEREBY MADE A PART OF THE SPECIFICATIONS.
 WORK SHALL BE CONSTRUCTED ACCORDING TO SPECIFICATIONS ON FILE IN THE OFFICE OF THE CITY ENGINEER AND SHALL BE PROSECUTED ONLY IN THE PRESENCE OF THE CITY ENGINEER.
 BEFORE WORK CAN BE STARTED THE CONTRACTOR MUST OBTAIN A PERMIT TO EXCAVE IN CITY STREETS FROM THE L.A. COUNTY ROAD DEPT., DISTRICT OFFICE NO. 4, AND MAKE A DEPOSIT WITH THE CITY OF MIRADA HILLS, 1001 N. ROSECRANS AVENUE - SUFFICIENT TO COVER THE COST OF CONSTRUCTION INSPECTION AND RECORD PLANS.
 APPROVAL OF THIS PLAN BY THE CITY OF MIRADA HILLS DOES NOT CONSTITUTE A REPRESENTATION AS TO THE ACCURACY OF THE LOCATION OR THE EXISTENCE OR NON-EXISTENCE OF ANY UNDERGROUND UTILITY PIPE, OR STRUCTURE WITHIN THE LIMITS OF THIS PROJECT. THIS NOTE APPLIES TO ALL PAGES.
 IF WORK IS TO BE DONE IN A STATE HIGHWAY, A PERMIT MUST BE OBTAINED FROM THE STATE OF CALIFORNIA, DIVISION OF HIGHWAYS, 120 SOUTH SPRING STREET.

CITY OF MIRADA HILLS, CALIFORNIA

APPROVED, JOHN A. LAMBIE, CITY ENGINEER APPROVED C.R. COMPTON, CHIEF ENGINEER
 CO. SAN. DES. NO. 18
 BY: *C.H. Hughes* SANITATION ENGINEER BY: *W.L. Williams* OFFICE ENGINEER
 CHECKED BY: *W.L. Williams* 11-27-60
 OFFICE OF - CITY ENGINEER, REG. C. E. NO. 2404

SUBMITTED BY: *John L. Eaton* 11-17-60
 LOS ANGELES REGIONAL ENGINEER, C.E. #3871



P.C.5664 PAGE 2

NO CHARGE
 FOR CONNECTIONS

30,003