

SOUTH EL MONTE BLDG. DIST. NO. 504

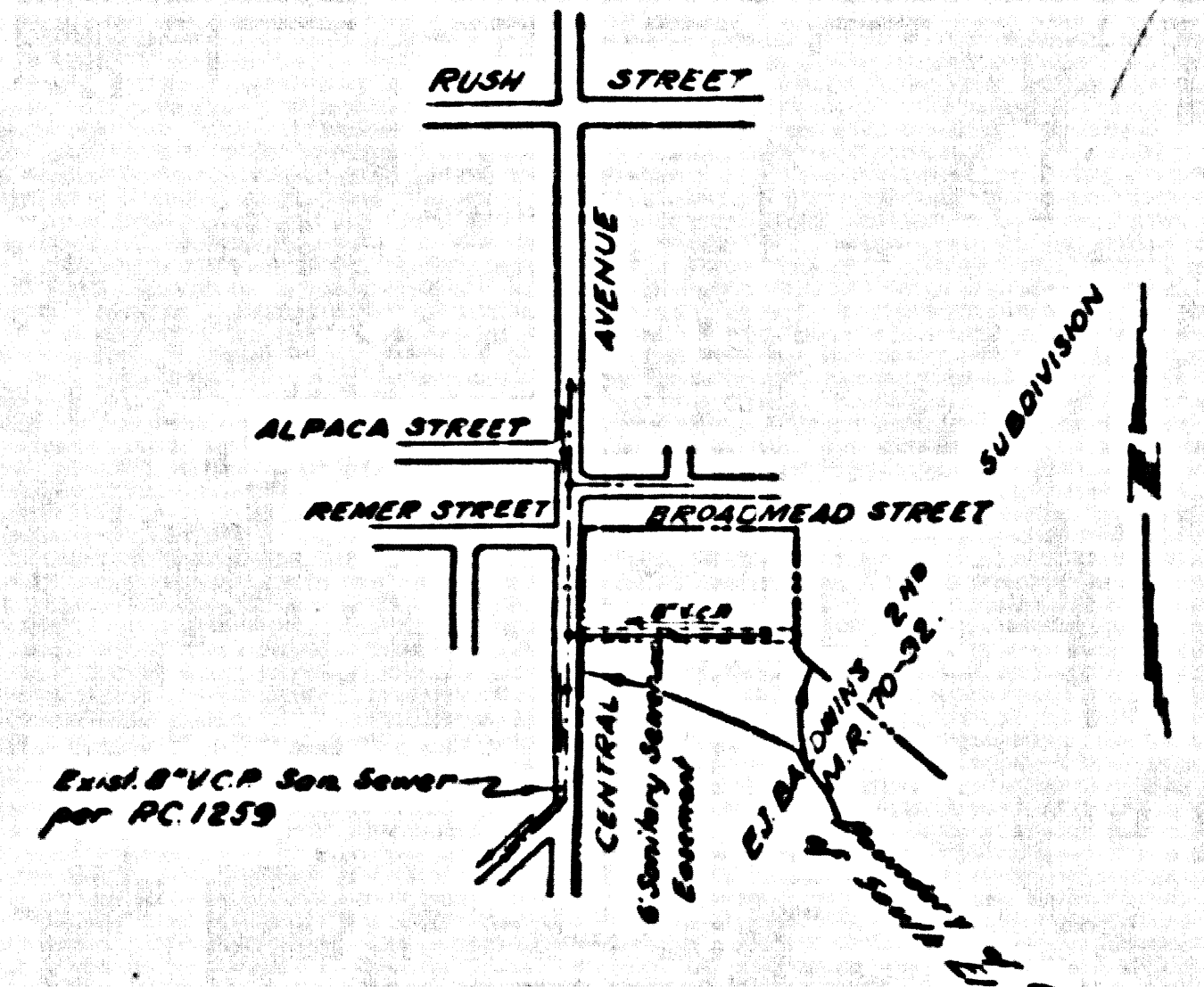
PROFILE ALIGNMENT AND GRADE OF **P.C. 5674**
SANITARY SEWERS PAGE 1
 TO BE CONSTRUCTED IN
SANITARY SEWER RIGHT OF WAY
PAST OF CENTRAL AVENUE

PRIVATE CONTRACT NO. 5674

W.S. 37,82
 SHEET 1 OF 2 PAGES
 SCALE: HORIZ. 1" = 40' VERT. 1" = 4'
 DATE: SEPTEMBER 1, 1960
 PREPARED BY THE OFFICES OF
ADAMS AND ELLS
CIVIL ENGINEERS
 REG. C. E. NO. 10880

30285

BENCH MARK:
 L&T in NW edge of 4' concrete walk
 of Bldg. 775' S.E. RUSH STREET
 ± 51' E. CENTRAL AVENUE
 S.G. 1937 Whittier Quad-1955-El-249.354



- NOTES:**
1. EXISTING GRADE ON THE PROPERTY LINE OR PROPERTY LINE INDICATED BY RIGHT ANGLES TO THE SEWER LINE AT THE CENTER LINE OF EACH MANHOLE.
 2. NO REPRESENTATIVE OF THE CITY ENGINEER WILL REVIEW OR SIGN ANY PORTION OF THIS WORK.
 3. THE OWNER OR HIS AUTHORIZED REPRESENTATIVE SHALL FURNISH THE CITY ENGINEER WITH BLANK SHEETS AND STATIONING FOR ALL HOUSE LATERALS AND T BRANCHES AND SHALL PROVIDE GRADE FOR THEM AT THESE PROPER LOCATIONS WITH STATIONING PLANNED MARKS. ANY CHANGE IN LOCATION SHALL BE REQUESTED IN WRITING BY THE OWNER OR HIS REPRESENTATIVE.
 4. ALL STRUCTURES SHALL BE BRICK SEWER STRUCTURES 36" DIA.
 5. NO REVISIONS SHALL BE MADE IN THESE PLANS WITHOUT THE APPROVAL OF THE CITY ENGINEER.
 6. USE STANDARD MANHOLE FRAMES AND COVERS 36" DIA.
 7. USE STANDARD BRICKWORK FOR SEWER AS NOTED.
 8. USE CONCRETE MORTAR OR "MORTAR-LOCK" OR "MORTAR-BAL" FOR ALL V.C.A. JOINTS PER SPEC. SEC. 16.4 G.
 9. REVERSE ALL TRENCH WITHIN PAVED AREA TO MEET L.A. COUNTY ROAD DEPT. OR CALIF. STATE HIGHWAY REQUIREMENTS IN ACCORDANCE WITH PERMITS.
 10. ENCASE FOUR FEET OF SEWER AT POINTS OF INTERFERENCE WITH POLES, CABS, ETC. PER SPEC. SEC. 16.4 H.
 11. ALL STRUCTURES SHALL BE BRICK SEWER STRUCTURES 36" DIA.
 12. FOR ALLOWABLE LOADS USE THE FORMULA $W = \frac{1}{2} \times \text{SPEC. SEC. 16}$
 13. MANHOLE TOPS IN UNIMPROVED AREAS SHALL BE 6" ABOVE FINISHED GRADE.
 14. THE CONTRACTOR SHALL NOTIFY THE CONSTRUCTION DEPARTMENT BY TELEPHONE, MANHOLE 3-0-0-0, SET MANHOLE LIDS TWENTY-FOUR HOURS BEFORE STARTING ANY WORK UNDER THIS CONTRACT.
 15. STANDARD SPECIFICATIONS DATED OCTOBER 1950 SHALL BE USED IN THE CONSTRUCTION OF THIS PROJECT.

NO CHARGE FOR CONNECTIONS
A.E. Adams and E. Ells

APPROVED BY: *J.H. Stewart* DATE: 12/7/60
 INDUSTRIAL WASTE DIVISION

NO CONNECTIONS FOR THE DISPOSAL OF INDUSTRIAL WASTES SHALL BE MADE TO SEWERS SHOWN ON THESE DRAWINGS WITHOUT WRITTEN PERMISSION FROM THE CHIEF ENGINEER AND GENERAL MANAGER OF THE COUNTY SANITATION DISTRICTS.

FOR LEGEND SEE PLAN NO. S-A-44

PLANS TO WHICH THIS IMPROVEMENT IS TO BE CONSTRUCTED ARE SHOWN ON PLANS AND PROFILES. GRADE POINTS FOR TOP OF CURB, CENTER LINE OF STREETS OR CENTER LINE OF ALLEYS ARE SHOWN BY CIRCLES OR SQUARES AT ALL POINTS BETWEEN MANHOLE POINTS. THE GRADE SHALL BE ESTABLISHED SO AS TO CONFORM TO A STRAIGHT LINE BEHIND BETWEEN SAID MANHOLE POINTS.

ALL ELEVATIONS ARE IN FEET ABOVE M.S.L. UNLESS OTHERWISE SPECIFIED.

THIS DRAWING AND THE DATA HEREON ARE HEREBY MADE A PART OF THE SPECIFICATIONS.

WORK SHALL BE CONSTRUCTED ACCORDING TO SPECIFICATIONS ON FILE IN THE OFFICE OF THE CITY ENGINEER AND SHALL BE PROCEEDED ONLY IN THE PRESENCE OF THE CITY ENGINEER.

BEFORE WORK CAN BE STARTED THE CONTRACTOR SHALL OBTAIN A PERMIT TO OCCUPY PUBLIC PROPERTY FROM THE L.A. COUNTY ROAD DEPT., DISTRICT OFFICE NO. 10, 1100 WEST 10TH STREET, LOS ANGELES, CALIF. 90057.

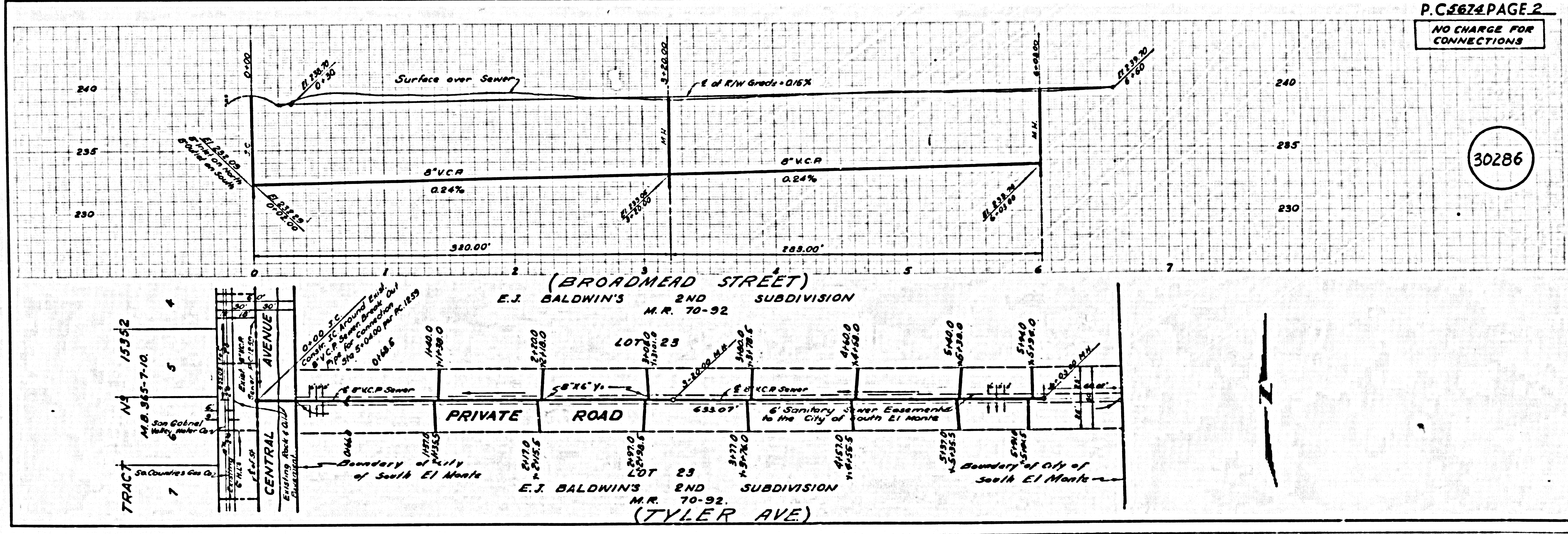
APPROVAL OF THIS PLAN BY THE CITY OF SOUTH EL MONTE DOES NOT CONSTITUTE A GUARANTEE AS TO THE ACCURACY OF THE LOCATION OF OR THE EXISTENCE OF HIGH UTILITIES OF ANY UNDERGROUND UTILITY PIPE, OR STRUCTURES WITHIN THE LIMITS OF THE PROJECT. THE BUYER BEARS ALL RISK.

IF WORK IS TO BE DONE IN A STATE HIGHWAY, A PERMIT MUST BE OBTAINED FROM THE STATE OF CALIFORNIA, DIVISION OF HIGHWAYS, LOS ANGELES OFFICE.

CITY OF SOUTH EL MONTE, CALIFORNIA

APPROVED: JOHN A. LAMBE, CITY ENGINEER APPROVED: C.R. COMPANY, CHIEF ENGINEER
 BY: *J.E. Stewart* DATE: 12/7/60
 CHIEF ENGINEER
 CHECKED BY: *A.K. Davis* DATE: 12/7/60
 OFFICE OF CITY ENGINEER, REG. C. E. NO. 2406

SUBMITTED: *M.F. Brannan*
 SAN GABRIEL VALLEY REGIONAL ENGINEER



P.C. 5674 PAGE 2
NO CHARGE FOR CONNECTIONS

30286