

DOUBLE SCALE  
DUARTE BLDG. DIST. NO. 5.02

PROFILE ALIGNMENT AND GRADE OF P.C. 5678  
SANITARY SEWERS PAGE 1  
TO BE CONSTRUCTED IN

TRACT NO 25786

PRIVATE CONTRACT NO. 5678

W.S. 47 B-1

2 SHEETS: 3 PAGES

SCALE: VERT. 1"=4' HORIZ. 1"=40'

OCTOBER, 1960

PREPARED IN THE OFFICES OF

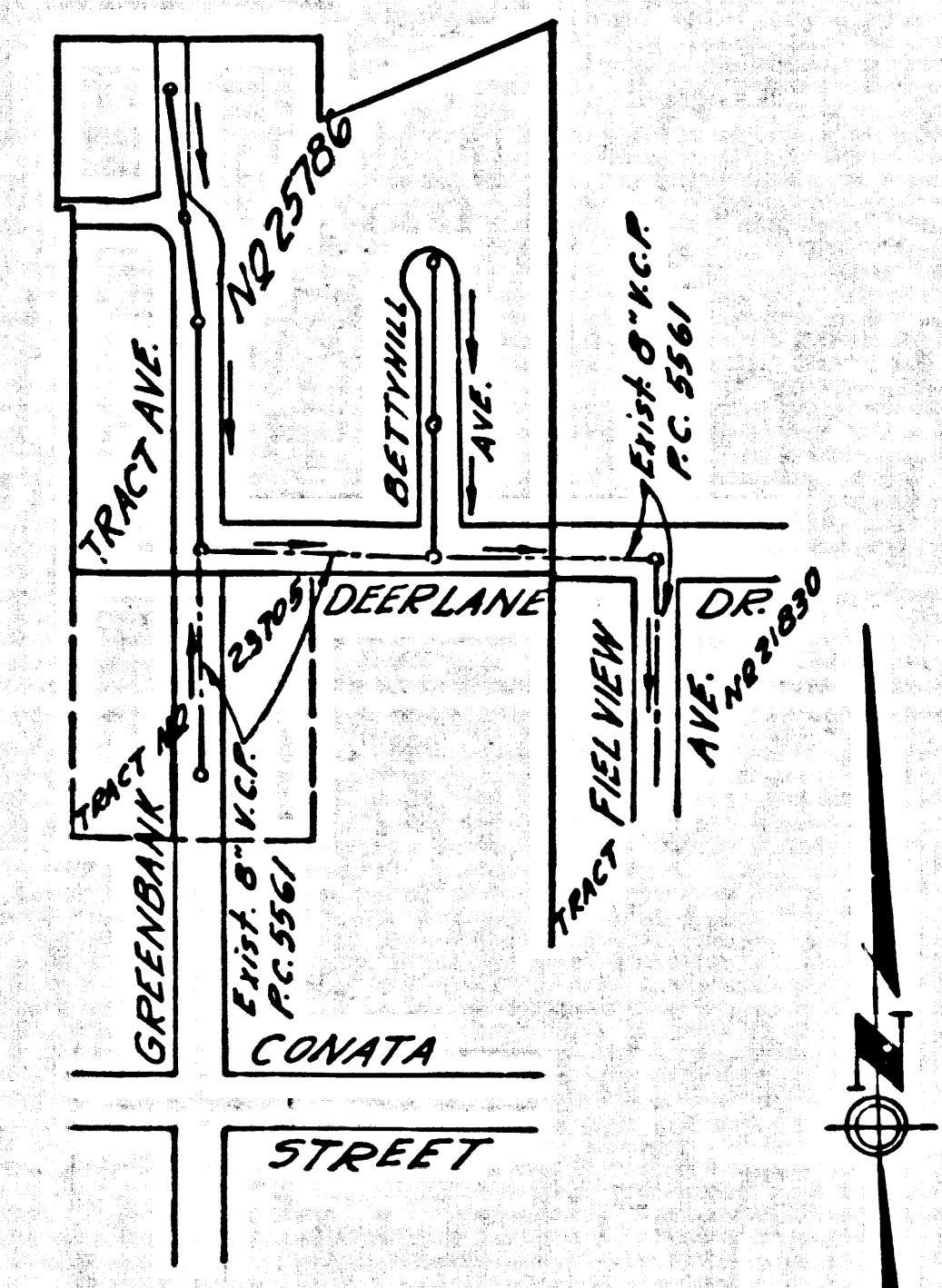
KEMMERER ENGR CO. INC.

By: Robert R. Filous

REG. C. E. NO. 11349

FOR LEGEND SEE PLAN NO. S-A-64

30853



INDEX MAP  
TRACT NO 25786  
P.C. 5678 SCALE 1"=300'

NOTE: IT SHALL BE THE CONTRACTORS RESPONSIBILITY TO LOCATE ALL UNDERGROUND LINES OF EVERY NATURE WHETHER SHOWN HEREON OR NOT AND PROTECT THEM FROM DAMAGE. THE CONTRACTOR SHALL BEAR THE TOTAL EXPENSE OF REPAIR TO ANY LINE DAMAGED BY ANY OPERATOR IN CONNECTION WITH THE PROSECUTION OF THIS WORK.

- NOTES:
1. PROVIDE STAKES ON THE PROPERTY LINE OR PROPERTY LINES PRODUCED AT RIGHT ANGLES TO THE SEWER LINE AT THE CENTER LINE OF EACH MANHOLE.
  2. NO REPRESENTATIVE OF THE CITY ENGINEER WILL SURVEY OR LAY OUT ANY PORTION OF THE WORK.
  3. THE OWNER OR HIS AUTHORIZED REPRESENTATIVE SHALL FURNISH THE COUNTY ENGINEER WITH GRADE SHEETS AND STATIONING FOR ALL HOUSE LATERALS AND Y BRANCHES AND SHALL PROVIDE STAKES FOR THEM AT THEIR PROPER LOCATIONS WITH STATIONING PLAINLY MARKED. ANY CHANGE IN LOCATION SHALL BE REQUESTED IN WRITING BY THE OWNER OR HIS REPRESENTATIVE.
  4. THE PRIVATE ENGINEER SHALL FURNISH THE HOUSE LATERAL DEPTH AT THE PROPERTY LINE BELOW THE TOP OF CURB ELEVATION FOR EACH HOUSE LATERAL ON THE GRADE SHEET.
  5. NO REVISIONS SHALL BE MADE IN THESE PLANS WITHOUT THE APPROVAL OF THE CITY ENGINEER.
  6. USE STANDARD MANHOLE FRAMES AND COVERS, S-117A.
  7. USE STANDARD STRENGTH PIPE EXCEPT AS NOTED.
  8. USE CEMENT MORTAR OR "WEDGE-LOCK" OR "SPEED-SEAL" FOR ALL V.C.P. JOINTS PER SPEC'S. SECS. 26 & 40.
  9. RESURFACE ALL TRENCH WITHIN PAVED AREA TO MEET L.A. COUNTY ROAD DEPT. OR CALIF. STATE HIGHWAY REQUIREMENTS IN ACCORDANCE WITH PERMITS.
  10. ENCASE FOUR FEET OF SEWER AT POINTS OF INTERFERENCE WITH POLES, CASE III, S-172.
  11. HOUSE LATERALS TO BE CONSTRUCTED WITH INVERTS AT PROPERTY LINE 6 FEET BELOW CURB GRADE EXCEPT AS NOTED.
  12. ALL STRUCTURES SHALL BE BRICK SEWER STRUCTURES, S-104.
  13. FOR ALLOWABLE LEAKAGE TEST USE FORMULA NO. 1 SPEC'S. SEC. 54.
  14. MANHOLE TOPS IN UNIMPROVED RIGHTS-OF-WAY TO BE SIX INCHES ABOVE FINISHED GRADE.
  15. THE CONTRACTOR SHALL NOTIFY THE CONSTRUCTION DIVISION BY TELEPHONE, MADISON 9-4747, 24 HOURS AT LEAST TWENTY-FOUR HOURS BEFORE STARTING ANY WORK UNDER THIS CONTRACT.
  16. STANDARD SPECIFICATIONS DATED OCTOBER 10, 1960 APPLY IN THE CONSTRUCTION OF THIS PROJECT.

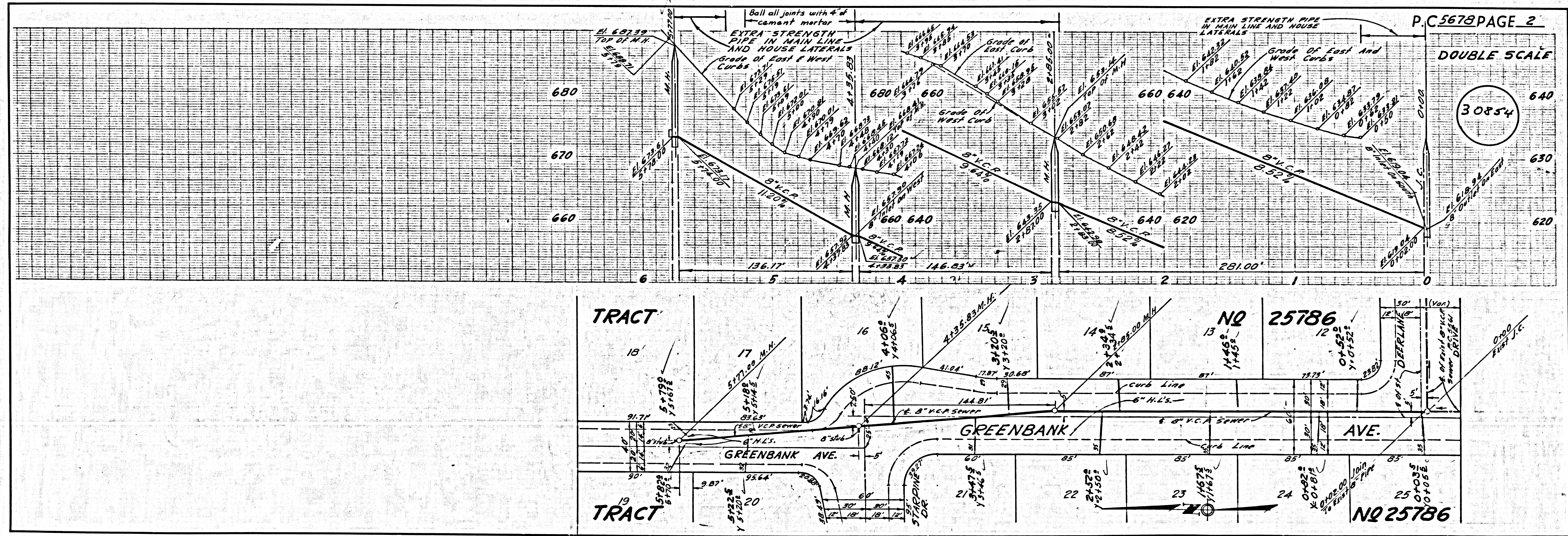
BENCH MARK: K.K. 195  
ELEV. 610.877 DEPT. AS 1950  
PAGE 63 FISH CANYON ROAD AND  
BETTINHILL AVE. N.E. COR. LET IN  
CURB AT EAST END OF CURB RETURN

NO CHARGE FOR CONNECTIONS  
A.G. Albertson 10/31/60

REVISION:  
Relocate M.H. @ Station 4+35.83 from 12.5 feet easterly of 4 of Greenbank Ave. extending northerly to 17.5 feet easterly. Relocate M.H. @ Station 5+74.00 from westerly of 4 of Greenbank Ave. to 5 feet easterly. Relocate sewer line to join new location of M.H.'s. Ball all joints with 4" of cement mortar between station 4+40 and station 5+20.  
Approved: K.F. Bravender  
OFFICE OF CITY ENGINEER

NOTE:  
GRADES TO WHICH THIS IMPROVEMENT IS TO BE CONSTRUCTED ARE SHOWN ON PLANS AND PROFILES. GRADE POINTS FOR TOP OF CURBS, CENTER LINE OF STREETS, OR CENTER LINE OF ALLEYS ARE SHOWN BY CIRCLES OR PROFILES AT ALL POINTS BETWEEN DESIGNATED POINTS. THE GRADE SHALL BE ESTABLISHED SO AS TO CONFORM TO A STRAIGHT LINE DRAWN BETWEEN SAID DESIGNATED POINTS.  
ELEVATIONS ARE IN FEET ABOVE U.S.C. & G.S. SEA LEVEL DATUM OF 1929.  
THIS DRAWING AND THE DATA HEREON ARE HEREBY MADE A PART OF THE SPECIFICATIONS.  
WORK SHALL BE CONSTRUCTED ACCORDING TO SPECIFICATIONS ON FILE IN THE OFFICE OF THE CITY ENGINEER AND SHALL BE PROSECUTED ONLY IN THE PRESENCE OF THE CITY ENGINEER.  
BEFORE WORK CAN BE STARTED, THE CONTRACTOR MUST OBTAIN A PERMIT TO EXCAVATE IN CITY STREETS FROM THE L.A. COUNTY ROAD DEPT., DISTRICT OFFICE NO. 12 AND MAKE A DEPOSIT WITH THE CITY OF DUARTE \$1500.00 SEE ST. CHARITIA, CALIF. SUFFICIENT TO COVER THE COST OF CONSTRUCTION INSPECTION AND RECORD PLANS.  
APPROVAL OF THIS PLAN BY THE CITY OF DUARTE DOES NOT CONSTITUTE A REPRESENTATION AS TO THE ACCURACY OF THE LOCATION OR THE EXISTENCE OR NON-EXISTENCE OF ANY UNDERGROUND UTILITY PIPE, OR STRUCTURE WITHIN THE LIMITS OF THIS PROJECT. THIS NOTE APPLIES TO ALL PAGES.  
IF WORK IS TO BE DONE IN A STATE HIGHWAY, A PERMIT MUST BE OBTAINED FROM THE STATE OF CALIFORNIA, DIVISION OF HIGHWAYS, 128 SOUTH SPRING STREET.

CITY OF DUARTE, CALIFORNIA  
APPROVED, JOHN A. LAMBIE, CITY ENGINEER APPROVED, C.R. COMPTON, CHIEF ENGINEER  
BY: C.E. Brandt, RES'T. SANITATION ENGINEER BY: J. Costello, OFFICE ENGINEER  
CHECKED BY: J.K. Winder, 10-31-60  
OFFICE OF CITY ENGINEER, REG. C. E. NO. 9464  
SUBMITTED: K.F. Bravender, SAN GABRIEL VALLEY REGIONAL ENGINEER



P.C. 5678 PAGE 2

DOUBLE SCALE

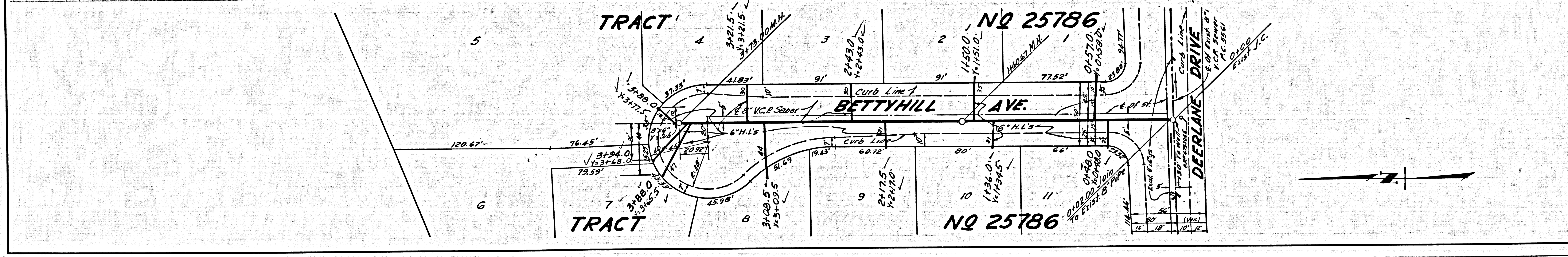
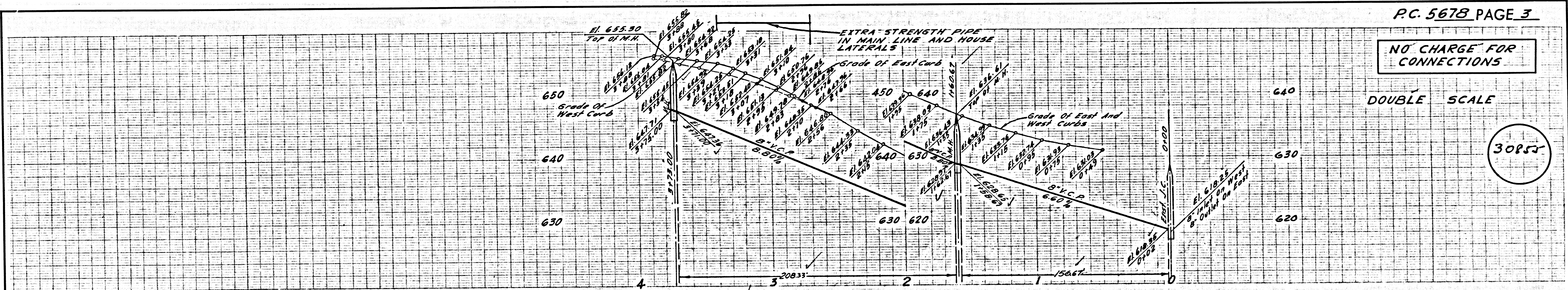
30854

P.C. 2578 TRACT NO 25786

NO CHARGE FOR CONNECTIONS

DOUBLE SCALE

3085'



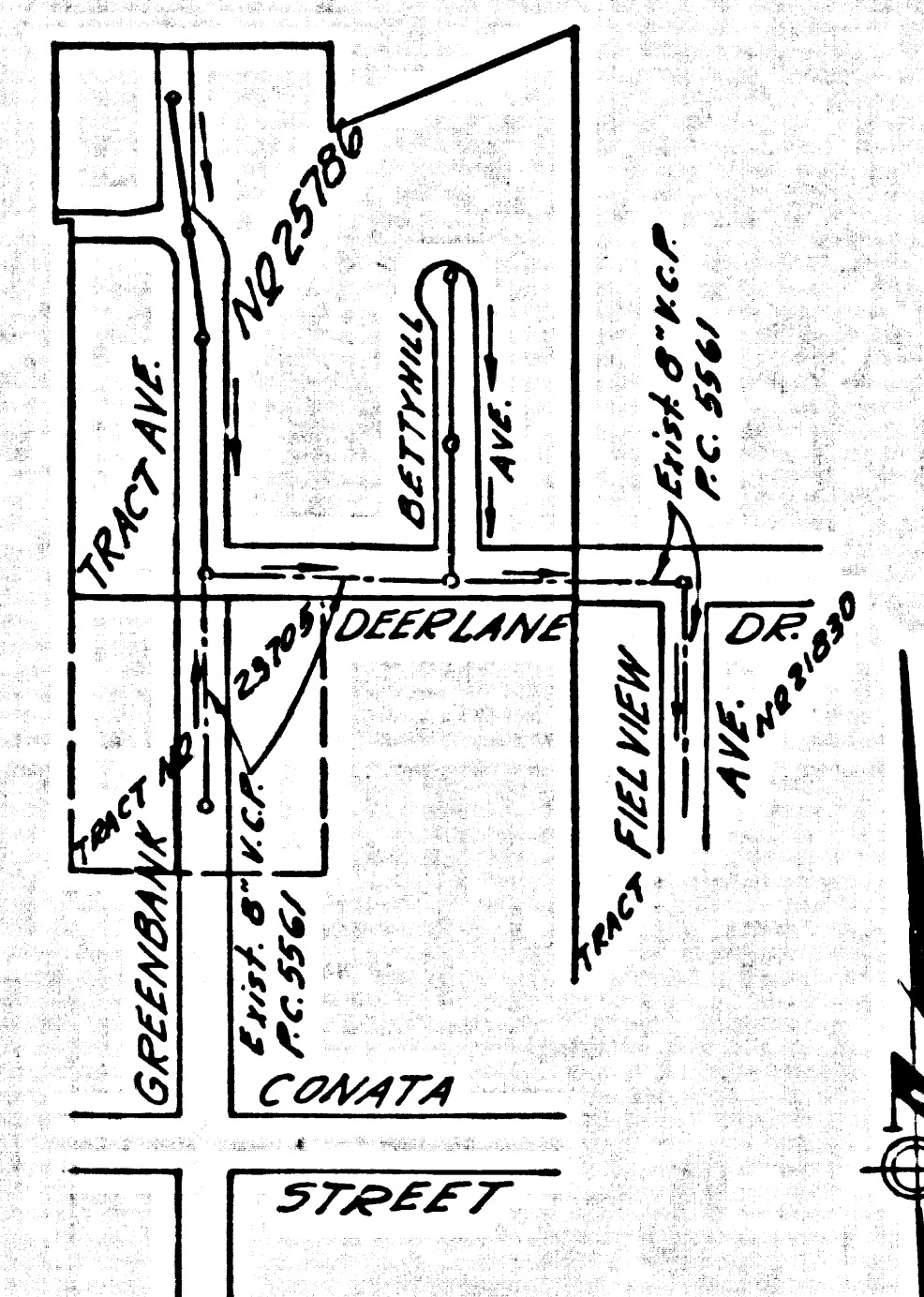
DOUBLE SCALE  
DUARTE BLDG. DIST. NO. 5.02

PROFILE ALIGNMENT AND GRADE OF P.C. 5678  
SANITARY SEWERS PAGE 1  
TO BE CONSTRUCTED IN

TRACT NO 25786  
PRIVATE CONTRACT NO. 5678

W.S. 47 B-1  
2 SHEETS; 3 PAGES  
SCALE: VERT. 1"=4' HORIZ. 1"=40'  
OCTOBER, 1960  
PREPARED IN THE OFFICES OF  
KEMMERER ENGR CO. INC.  
By: Robert R. Filous  
REG. C. E. NO. 11349  
FOR LEGEND SEE PLAN NO. S-A-64

30853



INDEX MAP  
TRACT NO 25786  
P.C. 5678 SCALE 1"=300'

NOTE: IT SHALL BE THE CONTRACTOR'S RESPONSIBILITY TO LOCATE ALL UNDERGROUND LINES OF EVERY NATURE, WHETHER SHOWN HEREON OR NOT, AND PROTECT THEM FROM DAMAGE. THE CONTRACTOR SHALL BEAR THE TOTAL EXPENSE OF REPAIR TO ANY LINE DAMAGED BY ANY OPERATOR IN CONNECTION WITH THE PROSECUTION OF THIS WORK.

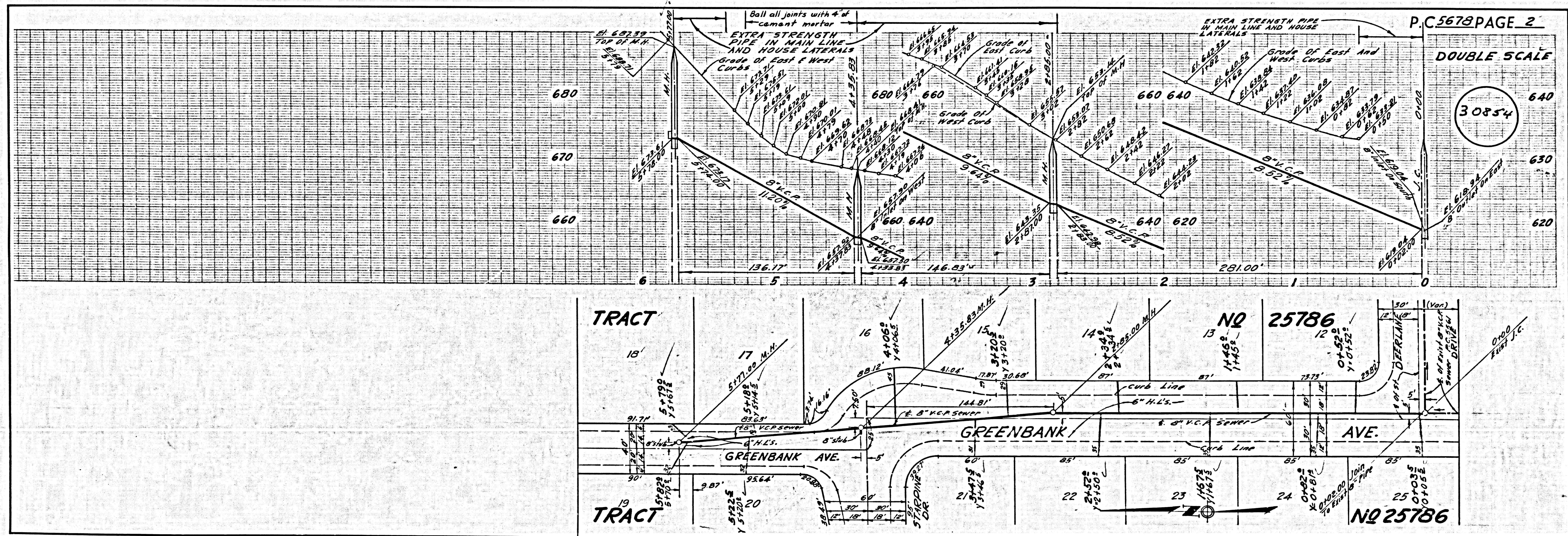
- NOTES:
1. PROVIDE STAKES ON THE PROPERTY LINE OR PROPERTY LINES PRODUCED AT RIGHT ANGLES TO THE SEWER LINE AT THE CENTER LINE OF EACH MANHOLE.
  2. NO REPRESENTATIVE OF THE CITY ENGINEER WILL SURVEY OR LAY OUT ANY PORTION OF THE WORK.
  3. THE OWNER OR HIS AUTHORIZED REPRESENTATIVE SHALL FURNISH THE CITY ENGINEER WITH GRADE SHEETS AND STATIONING FOR ALL HOUSE LATERALS AND Y BRANCHES AND SHALL PROVIDE STAKES FOR THEM AT THEIR PROPER LOCATIONS WITH STATIONING PLAINLY MARKED. ANY CHANGE IN LOCATION SHALL BE REQUESTED IN WRITING BY THE OWNER OR HIS REPRESENTATIVE.
  4. THE PRIVATE ENGINEER SHALL FURNISH THE HOUSE LATERAL DEPTH AT THE PROPERTY LINE BELOW THE TOP OF CURB ELEVATION FOR EACH HOUSE LATERAL ON THE GRADE SHEET.
  5. NO REVISIONS SHALL BE MADE IN THESE PLANS WITHOUT THE APPROVAL OF THE CITY ENGINEER.
  6. USE STANDARD MANHOLE FRAMES AND COVERS, S-117A.
  7. USE STANDARD STRENGTH PIPE EXCEPT AS NOTED.
  8. USE CEMENT MORTAR OR "WEDGE-LOCK" OR "SPED-SEAL" FOR ALL V.C.P. JOINTS PER SPEC'S, SECS. 34 & 48.
  9. RESURFACE ALL TRENCH WITHIN PAVED AREA TO MEET L.A. COUNTY ROAD DEPT. OR CALIF. STATE HIGHWAY REQUIREMENTS IN ACCORDANCE WITH PERMITS.
  10. ENCASE FOUR FEET OF SEWER AT POINTS OF INTERFERENCE WITH POLES, CASE III, S-1172.
  11. HOUSE LATERALS TO BE CONSTRUCTED WITH INVERTS AT PROPERTY LINE 6 FEET BELOW CURB GRADE EXCEPT AS NOTED.
  12. ALL STRUCTURES SHALL BE BRICK SEWER STRUCTURES, S-104.
  13. FOR ALLOWABLE LEAKAGE TEST USE FORMULA NO. 1, SPEC'S, SEC. 54.
  14. MANHOLE TOPS IN UNIMPROVED RIGHTS-OF-WAY TO BE SIX INCHES ABOVE FINISHED GRADE.
  15. THE CONTRACTOR SHALL NOTIFY THE CONSTRUCTION DIVISION BY TELEPHONE, MADISON 9-4717, EXT. 8151 AT LEAST TWENTY-FOUR HOURS BEFORE STARTING ANY WORK UNDER THIS CONTRACT.
  16. STANDARD SPECIFICATIONS DATED OCT. 10, 1960 APPLY IN THE CONSTRUCTION OF THIS PROJECT.

BENCH MARK, K.K. 195  
ELEV. 610.867 PER F.S. 1982  
PAGE 69 FISH CANYON ROAD AND  
BETHHILL AVE. N.E. COR. LET IN  
CURB AT EAST END OF CURB RETURN

NO CHARGE FOR CONNECTIONS  
A. B. Albertson 10/31/60

REVISION:  
Relocate M.H. @ Station 4+35.83 from 12.5 feet easterly of E. of Greenbank Ave., extending northerly, to 17.5 feet easterly. Relocate M.H. @ Station 5+76.00 from westerly of E. of Greenbank Ave. to 5 feet easterly. Relocate sewer line to join new location of M.H.'S. Ball all joints with 4" of cement mortar between station 4+40 and station 5+20.  
Approved: N. F. Braverley  
OFFICE OF CITY ENGINEER

NOTES:  
GRADES TO WHICH THIS IMPROVEMENT IS TO BE CONSTRUCTED ARE SHOWN ON PLANS AND PROFILES. GRADE POINTS FOR TOP OF CURBS, CENTER LINE OF STREETS, OR CENTER LINE OF ALLEYS ARE SHOWN BY CIRCLES ON PROFILES. AT ALL POINTS BETWEEN DESIGNATED POINTS THE GRADE SHALL BE ESTABLISHED SO AS TO CONFORM TO A STRAIGHT LINE DRAWN BETWEEN SAID DESIGNATED POINTS.  
ELEVATIONS ARE IN FEET ABOVE U.S.C. & G.S. SEA LEVEL DATUM OF 1929.  
THIS DRAWING AND THE DATA HEREON ARE HEREBY MADE A PART OF THE SPECIFICATIONS.  
WORK SHALL BE CONSTRUCTED ACCORDING TO SPECIFICATIONS ON FILE IN THE OFFICE OF THE CITY ENGINEER AND SHALL BE PROSECUTED ONLY IN THE PRESENCE OF THE CITY ENGINEER.  
BEFORE WORK CAN BE STARTED, THE CONTRACTOR MUST OBTAIN A PERMIT TO EXCAVATE IN CITY STREETS FROM THE L.A. COUNTY ROAD DEPT., DISTRICT OFFICE NO. 1, AND MAKE A DEPOSIT WITH THE CITY OF DUARTE, 1534 E. 3RD ST., DUARTE, CALIF., SUFFICIENT TO COVER THE COST OF CONSTRUCTION INSPECTION AND RECORD PLANS.  
APPROVAL OF THIS PLAN BY THE CITY OF DUARTE DOES NOT CONSTITUTE A REPRESENTATION AS TO THE ACCURACY OF THE LOCATION OR NON-EXISTENCE OF ANY UNDERGROUND UTILITY PIPE, OR STRUCTURE WITHIN THE LIMITS OF THIS PROJECT. THIS NOTE APPLIES TO ALL PAGES.  
IF WORK IS TO BE DONE IN A STATE HIGHWAY, A PERMIT MUST BE OBTAINED FROM THE STATE OF CALIFORNIA, DIVISION OF HIGHWAYS, 120 SOUTH SPRING STREET.  
CITY OF DUARTE, CALIFORNIA  
APPROVED, JOHN A. LAMBIE, CITY ENGINEER APPROVED, C. R. COMPTON, CHIEF ENGINEER  
TO SAN. DIST. NO. 22  
BY: [Signature] RES'T. SANITATION ENGINEER BY: [Signature] OFFICE ENGINEER  
CHECKED BY: [Signature] 10-31-60  
OFFICE OF CITY ENGINEER, REG. C. E. NO. 948L  
SUBMITTED: N. F. Braverley  
SAN GABRIEL VALLEY REGIONAL ENGINEER



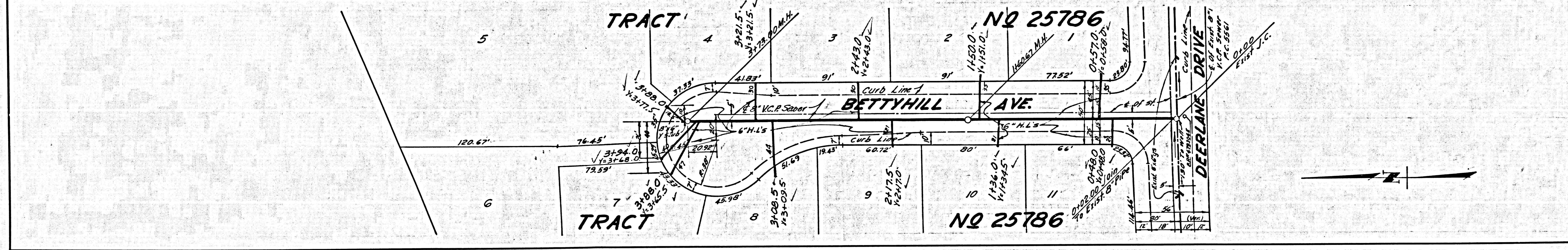
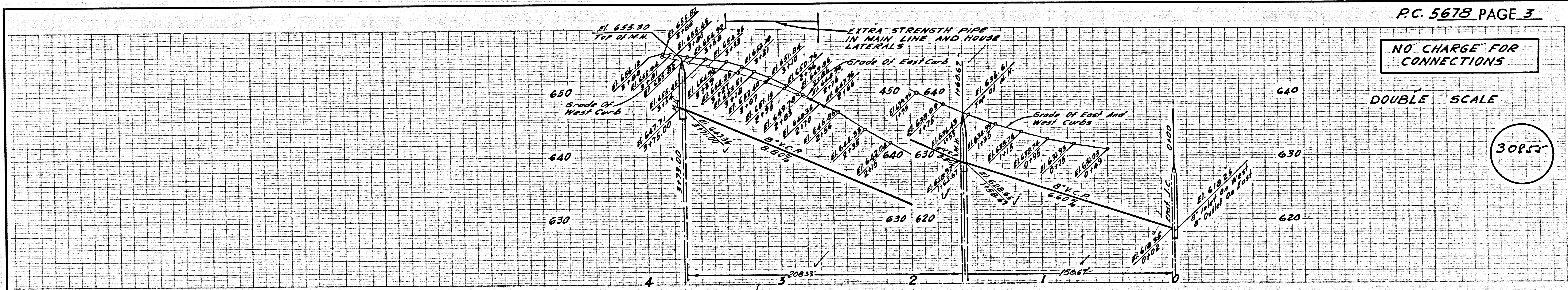
P.C. 5678 PAGE 2  
DOUBLE SCALE  
30854

P.C. 2578  
TRACT NO 25786

NO CHARGE FOR CONNECTIONS

DOUBLE SCALE

3085



DOUBLE SCALE  
DUARTE BLDG. DIST. NO. 5.02

PROFILE ALIGNMENT AND GRADE OF P.C. 5678  
SANITARY SEWERS PAGE 1  
TO BE CONSTRUCTED IN

TRACT NO 25786

PRIVATE CONTRACT NO. 5678

W.S. 47 B-1

2 SHEETS; 3 PAGES

SCALE: VERT. 1"=4' HORIZ. 1"=40'

OCTOBER 1960

30853

PREPARED IN THE OFFICES OF

KEMMERER ENGR CO. INC.

By: Robert R. Flores

REG. C. E. NO. 21349

FOR LEGEND SEE PLAN NO. S-A-64

NOTES:  
GRADES TO WHICH THIS IMPROVEMENT IS TO BE CONSTRUCTED ARE SHOWN ON PLANS AND PROFILES. GRADE POINTS FOR TOP OF CURBS, CENTER LINE OF STREETS, OR CENTER LINE OF ALLEYS ARE SHOWN BY CIRCLES ON PROFILES. AT ALL POINTS BETWEEN DESIGNATED POINTS THE GRADE SHALL BE ESTABLISHED SO AS TO CONFORM TO A STRAIGHT LINE DRAWN BETWEEN SAID DESIGNATED POINTS.  
ELEVATIONS ARE IN FEET ABOVE U.S.C. & G.S. SEA LEVEL DATUM OF 1929.  
THIS DRAWING AND THE DATA HEREON ARE HEREBY MADE A PART OF THE SPECIFICATIONS.  
WORK SHALL BE CONSTRUCTED ACCORDING TO SPECIFICATIONS ON FILE IN THE OFFICE OF THE CITY ENGINEER AND SHALL BE PROSECUTED ONLY IN THE PRESENCE OF THE CITY ENGINEER.  
BEFORE WORK CAN BE STARTED THE CONTRACTOR MUST OBTAIN A PERMIT TO EXCAVATE IN CITY STREETS FROM THE L.A. COUNTY ROAD DEPT., DISTRICT OFFICE NO. 1 AND MAKE A DEPOSIT WITH THE CITY OF DUARTE \$654.00 FOR 30' ST. DUARTE, CALIF. SUFFICIENT TO COVER THE COST OF CONSTRUCTION INSPECTION AND RECORD PLANS.  
APPROVAL OF THIS PLAN BY THE CITY OF DUARTE DOES NOT CONSTITUTE A REPRESENTATION AS TO THE ACCURACY OF THE LOCATION OF OR THE EXISTENCE OR NON-EXISTENCE OF ANY UNDERGROUND UTILITY PIPE, OR STRUCTURE WITHIN THE LIMITS OF THIS PROJECT. THIS NOTE APPLIES TO ALL PAGES.  
IF WORK IS TO BE DONE IN A STATE HIGHWAY, A PERMIT MUST BE OBTAINED FROM THE STATE OF CALIFORNIA, DIVISION OF HIGHWAYS, 120 SOUTH SPRING STREET.

CITY OF DUARTE, CALIFORNIA

APPROVED, JOHN A. LAMIE, CITY ENGINEER APPROVED, C. R. COMPTON, CHIEF ENGINEER

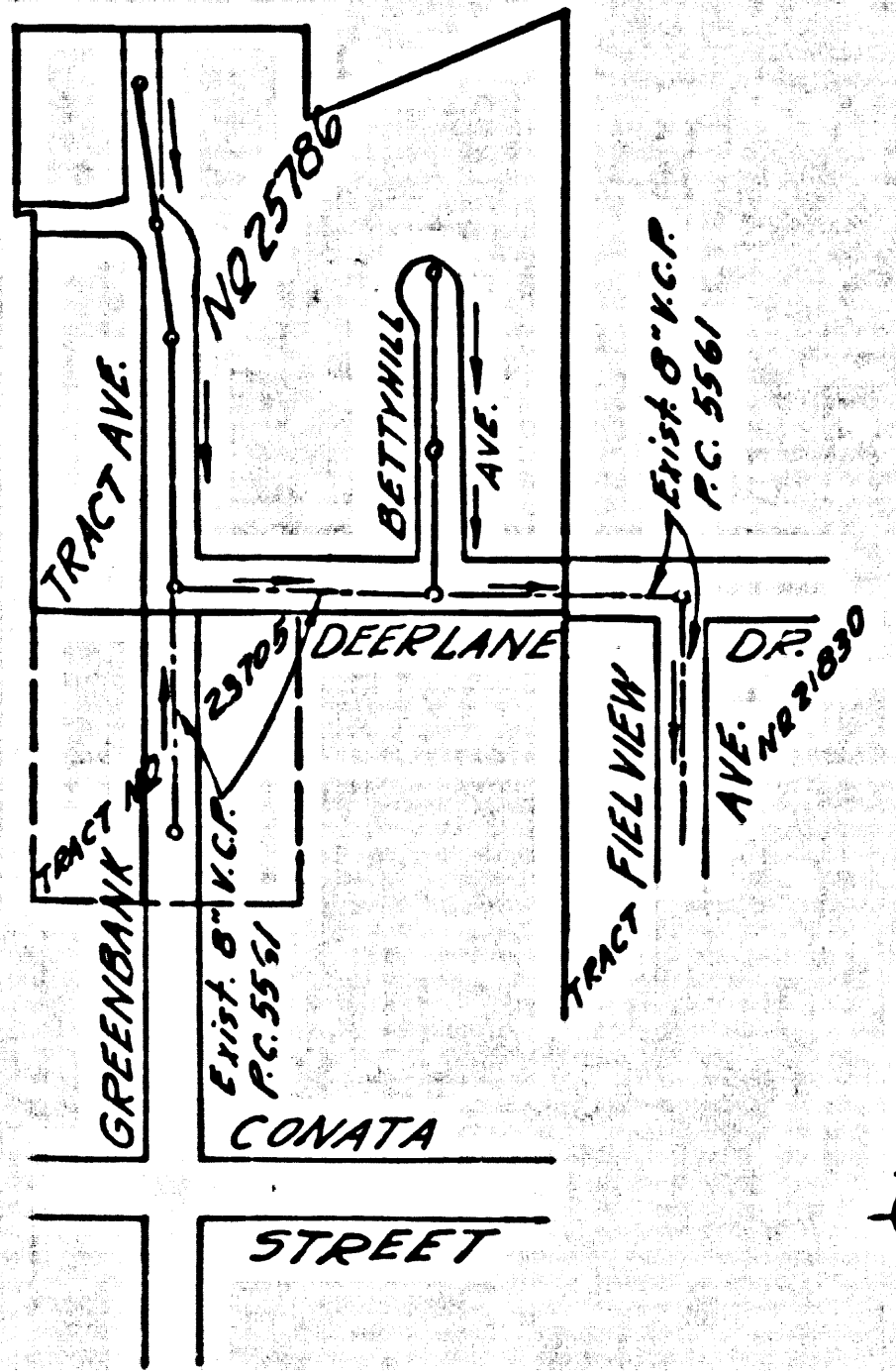
CO. SAN. DIST. NO. 22

BY: [Signature] [Signature]

CHECKED BY: [Signature] 10-31-60

OFFICE OF CITY ENGINEER, REG. C. E. NO. 2466

SUBMITTED: N. F. Brauer, SAN GABRIEL VALLEY REGIONAL ENGINEER



INDEX MAP  
TRACT NO 25786  
P.C. 5678 SCALE 1"=300'

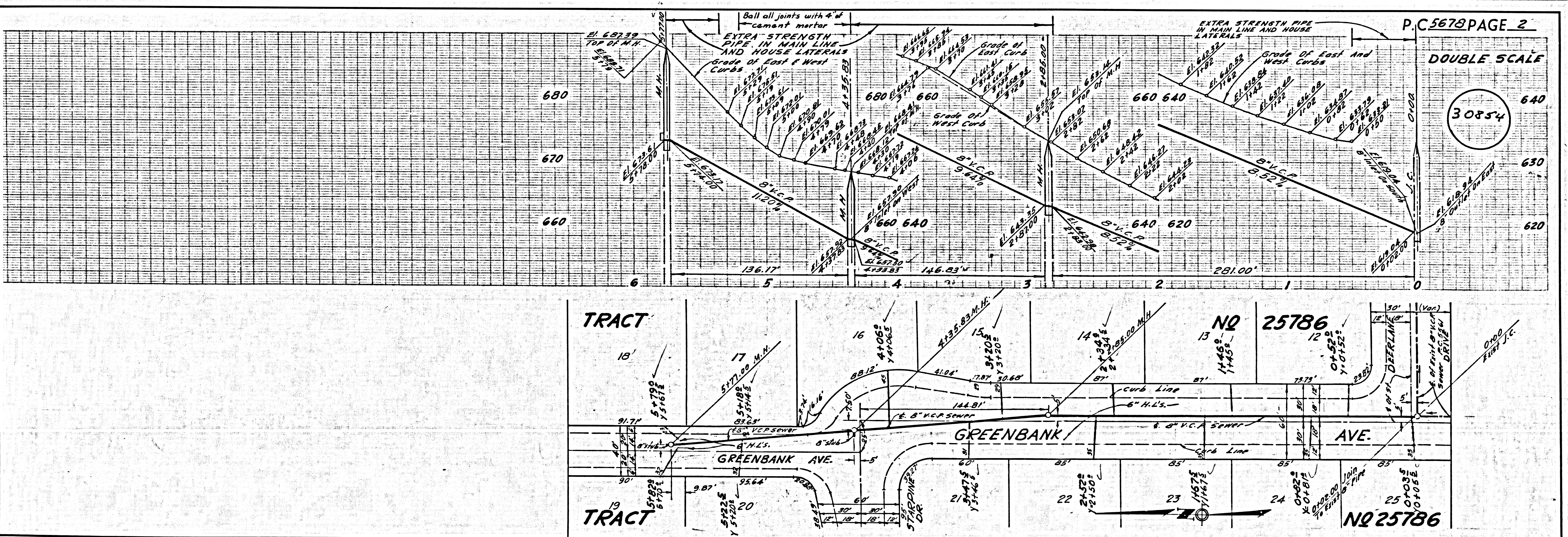
NOTE:  
IT SHALL BE THE CONTRACTOR'S RESPONSIBILITY TO LOCATE ALL UNDERGROUND LINES OF EVERY NATURE, WHETHER KNOWN REASON OR NOT AND PROTECT THEM FROM DAMAGE. THE CONTRACTOR SHALL BEAR THE TOTAL EXPENSE OF REPAIR TO ANY LINE DAMAGED BY ANY OPERATOR IN CONNECTION WITH THE PROSECUTION OF THIS WORK.

- NOTES:
1. PROVIDE STAKES ON THE PROPERTY LINE OR PROPERTY LINES PRODUCED AT RIGHT ANGLES TO THE SEWER LINE AT THE CENTER LINE OF EACH MANHOLE.
  2. NO REPRESENTATIVE OF THE CITY ENGINEER WILL SURVEY OR LAY OUT ANY PORTION OF THE WORK.
  3. THE OWNER OR HIS AUTHORIZED REPRESENTATIVE SHALL FURNISH THE COUNTY ENGINEER WITH GRADE SHEETS AND STATIONING FOR ALL HOUSE LATERALS AND Y BRANCHES AND SHALL PROVIDE STAKES FOR THEM AT THEIR PROPER LOCATIONS WITH STATIONING PLAINLY MARKED. ANY CHANGE IN LOCATION SHALL BE REQUESTED IN WRITING BY THE OWNER OR HIS REPRESENTATIVE.
  4. THE PRIVATE ENGINEER SHALL FURNISH THE HOUSE LATERAL DEPTH AT THE PROPERTY LINE BELOW THE TOP OF CURB ELEVATION FOR EACH HOUSE LATERAL ON THE GRADE SHEET.
  5. NO REVISIONS SHALL BE MADE IN THESE PLANS WITHOUT THE APPROVAL OF THE CITY ENGINEER.
  6. USE STANDARD MANHOLE FRAMES AND COVERS, S-117-A.
  7. USE STANDARD STRENGTH PIPE EXCEPT AS NOTED.
  8. USE CEMENT MORTAR OR "WEDGE-LOCK" OR "SPEED-SEAL" FOR ALL V.C.P. JOINTS PER SPEC., SECS. 34 & 41.
  9. RESURFACE ALL TRENCH WITHIN PAVED AREA TO MEET L.A. COUNTY ROAD DEPT. OR CALIF. STATE HIGHWAY REQUIREMENTS IN ACCORDANCE WITH PERMITS.
  10. ENCASE FOUR FEET OF SEWER AT POINTS OF INTERFERENCE WITH POLES, CASE III, S-117.
  11. HOUSE LATERALS TO BE CONSTRUCTED WITH INVERTS AT PROPERTY LINE 6 FEET BELOW CURB GRADE EXCEPT AS NOTED.
  12. ALL STRUCTURES SHALL BE BRICK SEWER STRUCTURES, S-104.
  13. FOR ALLOWABLE LEAKAGE TEST USE FORMULA NO. 1, SPEC'S, SEC. 64.
  14. MANHOLE TOPS IN UNIMPROVED RIGHTS-OF-WAY TO BE SIX INCHES ABOVE FINISHED GRADE.
  15. THE CONTRACTOR SHALL NOTIFY THE CONSTRUCTION DIVISION BY TELEPHONE, MADRON 5-4747, EXT. 81551 AT LEAST TWENTY-FOUR HOURS BEFORE STARTING ANY WORK UNDER THIS CONTRACT.
  16. STANDARD SPECIFICATIONS DATED OCT. 10, 1960 APPLY IN THE CONSTRUCTION OF THIS PROJECT.

BENCH MARK: K.K. 195  
ELEV. 604.867 PER F.S. 1982  
PAGE 69 FISH CANYON ROAD AND  
BETTYHILL AVE. N.E. COR. LET IN  
CURB AT EAST END OF CURB RETURN

NO CHARGE FOR CONNECTIONS  
A. L. Albertson 10/31/60

REVISION:  
Relocate M.H. @ Station 4+35.83 from 12.5 feet easterly of E. of Greenbank Ave., extending northerly, to 17.5 feet easterly. Relocate M.H. @ Station 5+76.00 from westerly of E. of Greenbank Ave. to 5 feet easterly. Relocate sewer line to join new location of M.H.'s. Ball all joints with 4" of cement mortar between station 4+40 and station 5+20.  
Approved: N. F. Brauer, OFFICE OF CITY ENGINEER



DOUBLE SCALE  
P.C. 5678 PAGE 2  
30854

5 - 100 NO. CAL. STATE PRINTING SHEET NO. 1

P.C. 2218 16AC1 NO 52182

NO CHARGE FOR CONNECTIONS

DOUBLE SCALE

30857

