

TEMPLE CITY BLDG. DIST. NO. 5

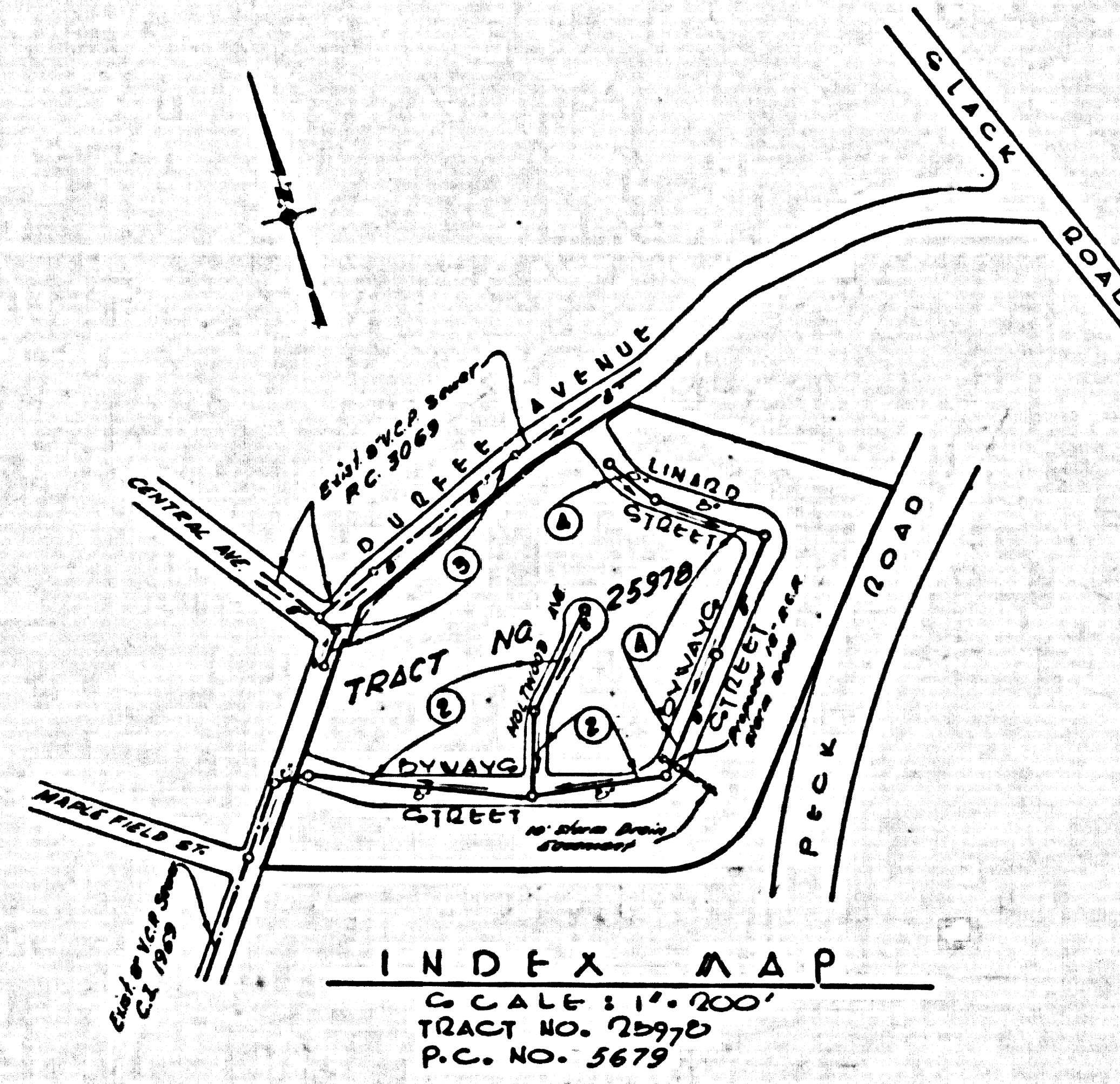
PROFILE ALIGNMENT AND GRADE OF P.C. 5679
 SANITARY SEWERS PAGE 1
 TO BE CONSTRUCTED IN J.N. 0354.59

TRACT NO. 25978
 PRIVATE CONTRACT NO. 5679

W.S. 37
 2 SHEETS - 4 PAGES
 SCALE: HORIZ. 1" = 40' VERT. 1" = 5 FT.
 PREPARED IN THE OFFICES OF

Robert R. Feltes
 REG. C.E. NO. 11349
 FOR LEGEND SEE PLAN NO. S-A-44

30,195



NOTE: IT SHALL BE THE CONTRACTOR'S RESPONSIBILITY TO OBTAIN ALL NECESSARY PERMITS AND APPROVALS FROM THE CITY ENGINEER AND COUNTY ENGINEER BEFORE THE COMMENCEMENT OF CONSTRUCTION WITHIN THE JURISDICTION OF THEIR OFFICE.

1. HOUSE GRADES ON THE PROPERTY LINE OR PROPERTY LINES PRODUCED AS SHOWN HEREON TO THE SEWER LINE AT THE CENTER LINE OF EACH PARCEL.
2. NO REPRESENTATIVE OF THE COUNTY ENGINEER WILL BE PRESENT OR LAY OFF ANY PORTION OF THE WORK.
3. THE OWNER OR HIS AUTHORIZED REPRESENTATIVE SHALL FURNISH THE CONTRACTOR WITH GRADE SHEETS AND STATIONING FOR ALL HOUSE LATERALS AND BY-PASSES AND SHALL FURNISH GRADES FOR THOSE IN THOSE HOUSE LOCATIONS WITH STATIONING PLAINLY MARKED. ANY CHANGE IN LOCATION SHALL BE REQUESTED BY WRITING BY THE OWNER OR HIS AUTHORIZED REPRESENTATIVE.
4. THE PRIVATE ENGINEER SHALL FURNISH THE HOUSE LATERAL DATA AT THE PROPERTY LINE SHOWING THE TOP OF CURB ELEVATION FOR EACH HOUSE LATERAL ON THE GRADE SHEET.
5. NO REVISIONS SHALL BE MADE IN THESE PLANS WITHOUT THE APPROVAL OF THE COUNTY ENGINEER.
6. THE STANDARD MANHOLE FRAMES AND COVERS, S.W.P.C. EXCEPT AS NOTED.
7. THE STANDARD BRICKWORK FOR SEWERS AS NOTED.
8. THE COUNTY ENGINEER OR "MUNICIPALITY" ON "VENDOR" FOR ALL V.E.A. JOINTS FOR SECT. 26 & 28.
9. REINFORCE ALL TRENCH WITHIN PAVED AREA TO MEET L.A. COUNTY ROAD DEPT. OR CALIF. STATE HIGHWAY DEPT. REQUIREMENTS IN ACCORDANCE WITH PLANS.
10. SLOPE JOINTS FOR SEWERS AT POINTS OF INTERFERENCE WITH POLES, CABLES, ETC., SHALL BE AS NOTED.
11. HOUSE LATERALS TO BE CONSTRUCTED WITH INVERTS AT PROPERTY LINE - 6" - FOR SLOW CURVE GRADE SEWER AS NOTED.
12. ALL STRUCTURES SHALL BE DRAIN SEWER STRUCTURES - 18" DIA. EXCEPT AS NOTED.
13. FOR ALLOWANCE MAKE USE OF FORMULA NO. 1 - SECT. 26, 28.
14. MANHOLE TOPS IN UNIMPROVED AREAS SHALL BE 24" ABOVE FINISHED GRADE.
15. THE CONTRACTOR SHALL NOTIFY THE COUNTY ENGINEER BY TELEPHONE, MAIL OR BY REGISTERED MAIL 48 HOURS BEFORE THE COMMENCEMENT OF ANY WORK UNDER THIS CONTRACT.
16. STANDARD SPECIFICATIONS DATED OCTOBER 1963 ON FILE IN LEGAL OFFICE OF THE COUNTY ENGINEER.

B.M. 57: 175' L & 81' ON 6th Conc. Wall of
 A.C. 50' 11" S.W. End of Legena St
 N. 1/4 Sec. 10, T. 12 N. R. 12 W. of Park
 Ed. (PROP.)
 Elev. 823.009 11/11/55

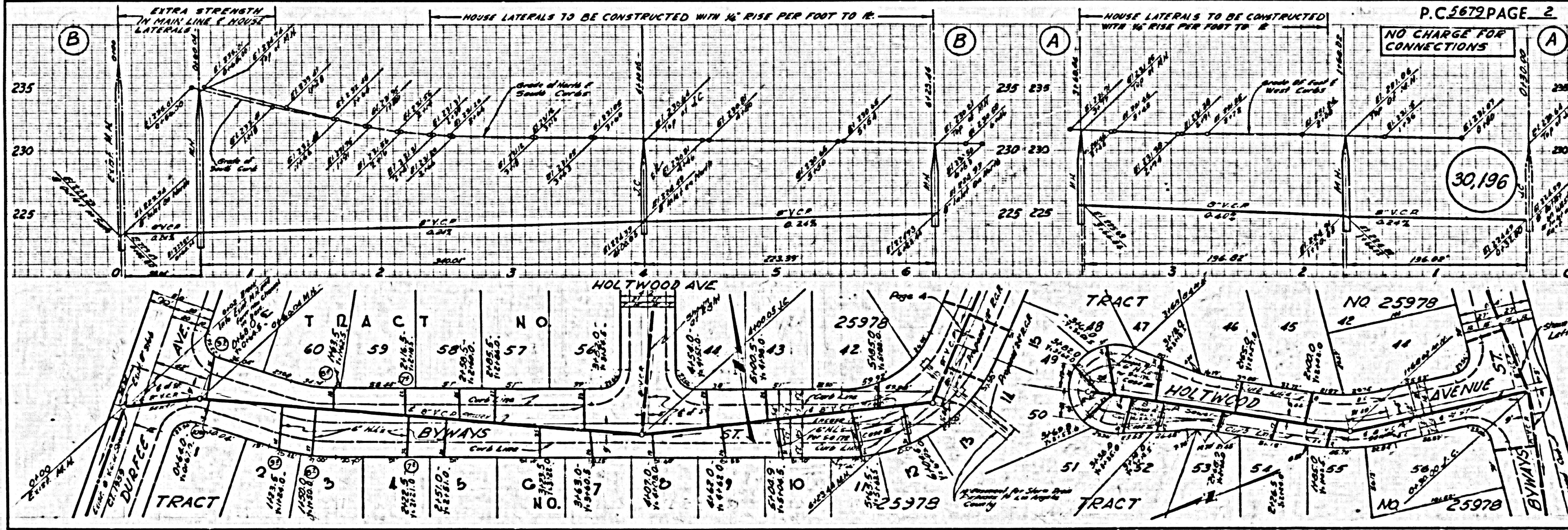
COLLECT CHARGES
 AS INDICATED
 R.G. Albertson 12/12/60

NO CONNECTIONS FOR THE DISPOSAL OF INDUSTRIAL WASTES SHALL BE MADE TO SEWERS OR TO THESE CHANGING WITHOUT THE PERMISSION FROM THE COUNTY ENGINEER AND COUNTY MANAGER OF THE COUNTY SANITATION DISTRICTS.

COUNTY OF LOS ANGELES, CALIFORNIA
 APPROVED: JOHN A. LAMBLE, COUNTY ENGINEER
 APPROVED: C.E. COOPER, CHIEF ENGINEER
 W.S. 37
 CHECKED BY: R. W. WILKINSON, 11-15-61
 OFFICE OF COUNTY ENGINEER, REG. C.E. NO. 11349

SUBMITTED: N.P. Bravender
 SAN GABRIEL VALLEY REGIONAL ENGINEER

AREAS ON TRACT 25978



P.C. 5679 PAGE 2
 NO CHARGE FOR CONNECTIONS

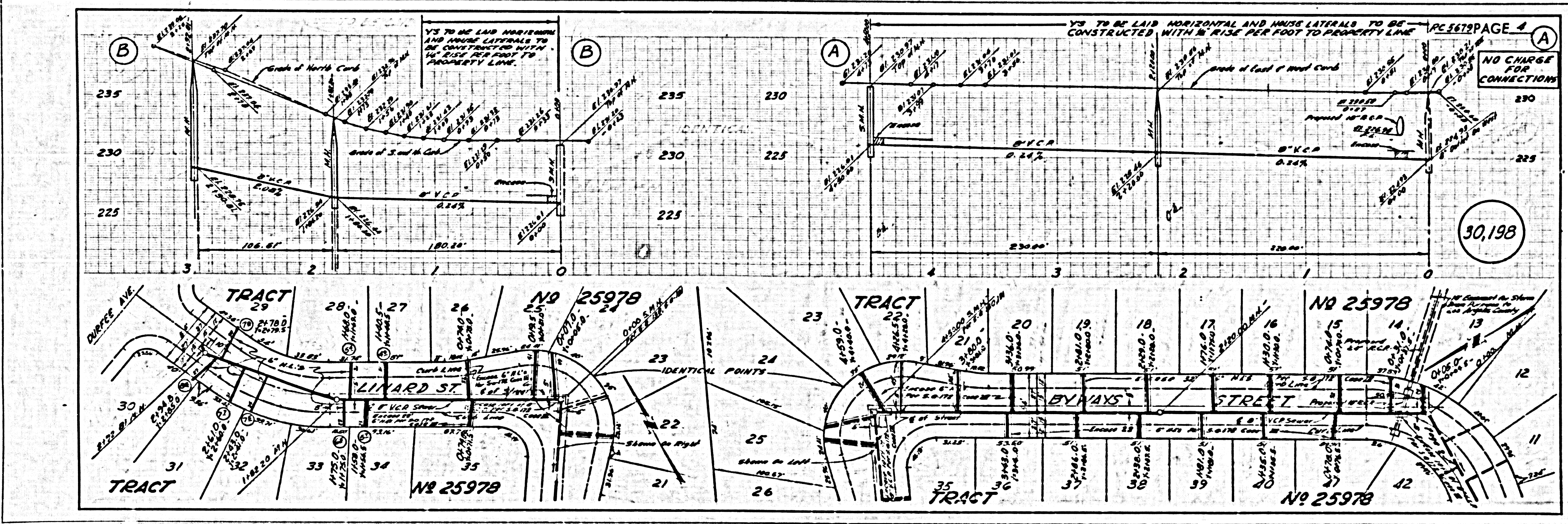
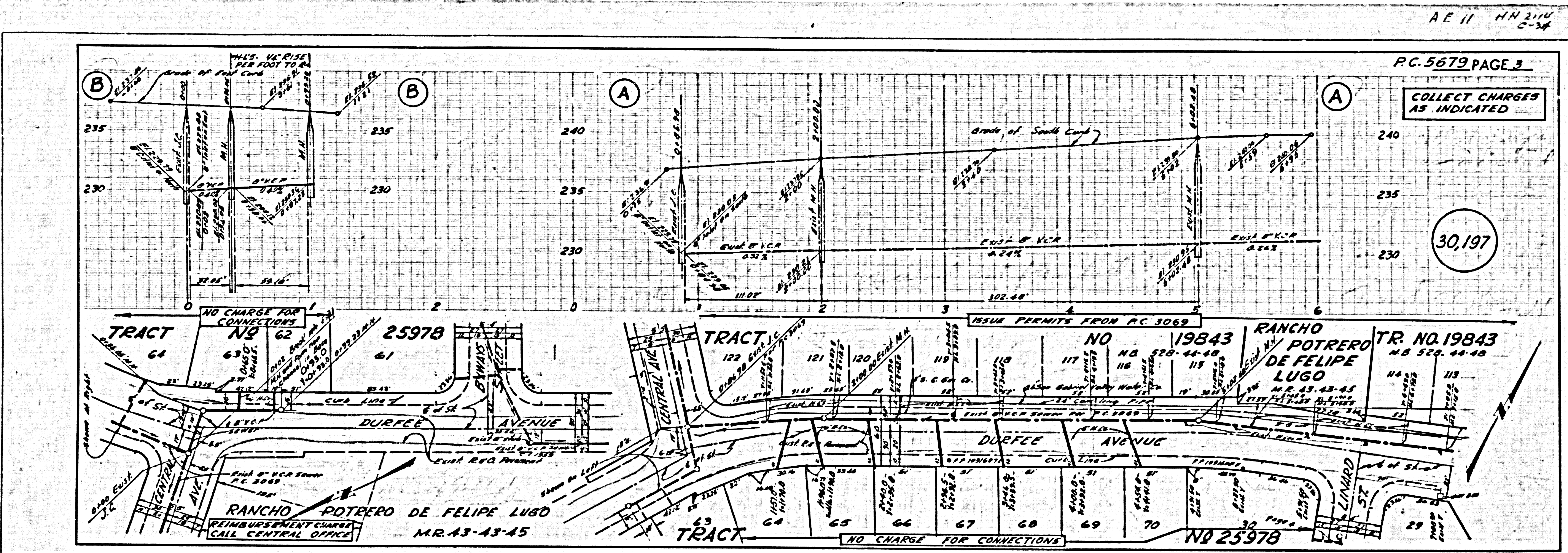
30,196

TRACT NO 52978 PAGE 1 OF 4 SHEETS
 TRACT NO 52978 PAGE 5 OF 4 SHEETS
 B.C. 2628

PC 29
STRES ON
TAPRT

STRES ON
TAPRT

PC 29



PC 29
STRES ON
TAPRT

STRES ON
TAPRT

PC 29