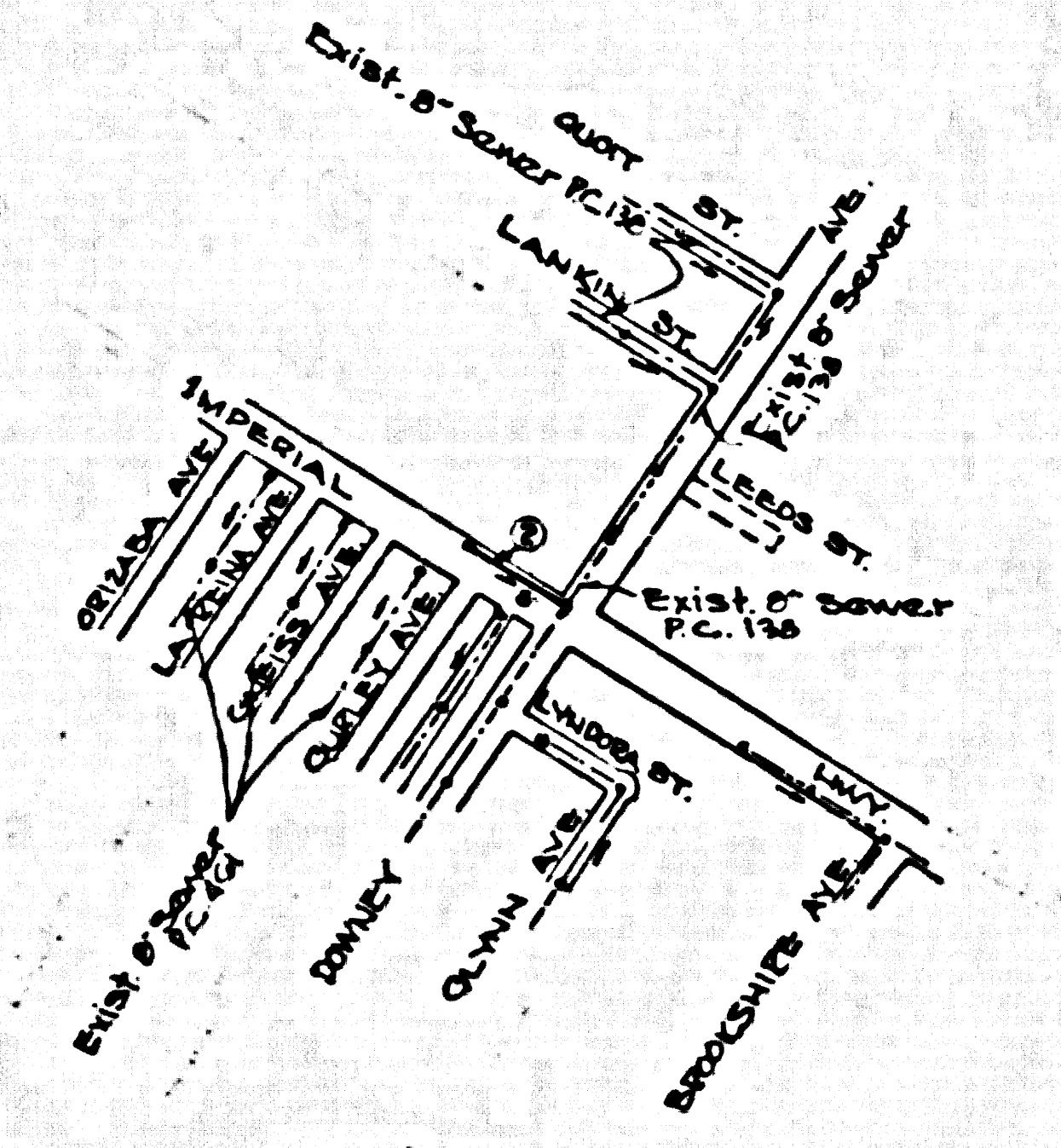


B.M.S.Y. 2327 ELEV. 100.355 (1959) L&T  
 IN N. CB. OF PARKWAY BETWEEN IMPERIAL  
 HWY. & SERVICE ROAD. 23' W OF CB. RET.  
 4.40' W. OF E. DOWNEY AVE. 2 ± 3 ± 5  
 OF E. IMPERIAL HWY. - NORMAL QUAD.



INDEX MAP  
 P.C. 5686  
 SCALE 1/600'

### DOWNEY BLDG. DIST. NO. 4.03

- NOTES:**
1. PROVIDE STAKES ON THE PROPERTY LINE OR PROPERTY LINES PRODUCED AT RIGHT ANGLES TO THE CENTER LINE AT THE CENTER LINE OF EACH MANHOLE.
  2. NO REPRESENTATIVE OF THE COUNTY ENGINEER WILL SURVEY OR LAY OUT ANY PORTION OF THE WORK.
  3. THE OWNER OR HIS AUTHORIZED REPRESENTATIVE SHALL FURNISH THE COUNTY ENGINEER WITH GRADE SHEETS AND STATIONING FOR ALL HOUSE LATERALS AND Y BRANCHES AND SHALL PROVIDE STAKES FOR THEM AT THEIR PROPER LOCATIONS WITH STATIONING PLAINLY MARKED. ANY CHANGE IN LOCATION SHALL BE REQUESTED IN WRITING BY THE OWNER OR HIS REPRESENTATIVE.
  4. THE PRIVATE ENGINEER SHALL FURNISH THE HOUSE LATERAL DEPTH AT THE PROPERTY LINE BELOW THE TOP OF CURB ELEVATION FOR EACH HOUSE LATERAL ON THE GRADE SHEET.
  5. NO REVISIONS SHALL BE MADE IN THESE PLANS WITHOUT THE APPROVAL OF THE COUNTY ENGINEER.
  6. USE STANDARD MANHOLE FRAMES AND COVERS, 2-11T, COVER TO ROAD SEWER.
  7. USE STANDARD STRENGTH PIPE.
  8. USE CEMENT MORTAR OR "WEBB-LOCK" OR "SPREAD-SEAL" FOR ALL V.C.P. JOINTS PER SPEC. SEC. 16 & 17.
  9. RESTORACE ALL TRENCH WITHIN PAVED AREA TO MEET L.A. COUNTY ROAD DEPT. OR CALIF. STATE HIGHWAY REQUIREMENTS IN ACCORDANCE WITH PERMITS.
  10. BENCH FOUR FEET OF SEWER AT POINTS OF INTERFERENCE WITH POLES, CASE III, 2-17E.
  11. HOUSE LATERALS TO BE CONSTRUCTED WITH INVERTS AT PROPERTY LINE 6" FEET BELOW CURB GRADE EXCEPT AS NOTED.
  12. ALL STRUCTURES SHALL BE BRICK SEWER STRUCTURES, 2-19A.
  13. FOR ALLOWABLE LEAKAGE TEST USE FORM "LA NO. 1" PER SPEC. SEC. 54.
  14. MANHOLE TOPS IN UNIMPROVED RIGHTS-OF-WAY TO BE SIX INCHES ABOVE FINISHED GRADE.
  15. THE CONTRACTOR SHALL NOTIFY THE CONSTRUCTION DIVISION BY TELEPHONE, MADISON 9-4410, 24 HRS. AT LEAST TWENTY-FOUR HOURS BEFORE STARTING ANY WORK UNDER THIS CONTRACT.
  16. STANDARD SPECIFICATIONS DATED JANUARY 1, 1950, ON FILE IN THE OFFICE OF THE CITY ENGINEER, APPLY IN THE CONSTRUCTION OF THIS PROJECT.

PROFILE ALIGNMENT AND GRADE OF **P.C. 5686**  
**SANITARY SEWERS PAGE 1**

TO BE CONSTRUCTED IN  
**IMPERIAL HIGHWAY 29,902**

**PRIVATE CONTRACT NO. 5686**

W.S. 32  
 1 SHEET OF 2 PAGES

SCALE: VERT. 1" = 4'  
 HORIZ. 1" = 60'

SEPTEMBER 1960

PREPARED IN THE OFFICES OF

**OLSON SURVEYING SERVICE**

BY: *[Signature]*  
 REG. C. E. NO. 7070

FOR LEGEND SEE PLAN NO. S-A-44

**NOTE:**  
 GRADES TO WHICH THIS IMPROVEMENT IS TO BE CONSTRUCTED ARE SHOWN ON PLANS AND PROFILES. GRADE POINTS FOR TOP OF CURB, CENTER LINE OF STREETS, OR CENTER LINE OF ALLEYS ARE SHOWN BY CIRCLES ON PROFILES. AT ALL POINTS BETWEEN DESIGNATED POINTS THE GRADE SHALL BE ESTABLISHED SO AS TO CONFORM TO A STRAIGHT LINE DRAWN BETWEEN SAID DESIGNATED POINTS.  
 ELEVATIONS ARE IN FEET ABOVE M.S.L. & S.E. SEA LEVEL BATHY OF 1929.  
 THIS DRAWING AND THE DATA HEREON ARE HEREBY MADE A PART OF THE SPECIFICATIONS.  
 WORK SHALL BE CONSTRUCTED ACCORDING TO SPECIFICATIONS ON FILE IN THE OFFICE OF THE CITY ENGINEER AND SHALL BE PROSECUTED ONLY IN THE PRESENCE OF THE CITY ENGINEER.  
 BEFORE WORK CAN BE STARTED, THE CONTRACTOR MUST OBTAIN A PERMIT TO EXCAVATE IN CITY STREETS FROM THE CITY OF DOWNEY, AND MAKE A DEPOSIT WITH THE CITY OF DOWNEY.  
 8.5' E. SECOND STREET, DOWNEY TOWARDS THE COS. OF CONSTRUCTION INSPECTION AND RECORD PLANS.  
 APPROVAL OF THIS PLAN BY THE CITY OF DOWNEY DOES NOT CONSTITUTE A REPRESENTATION AS TO THE ACCURACY OF THE LOCATION OR OF THE EXISTENCE OR NON-EXISTENCE OF ANY UNDERGROUND UTILITY PIPE, OR STRUCTURE WITHIN THE LIMITS OF THIS PROJECT. THIS NOTE APPLIES TO ALL PAGES.  
 IF WORK IS TO BE DONE IN A STATE HIGHWAY, A PERMIT MUST BE OBTAINED FROM THE STATE OF CALIFORNIA, DIVISION OF HIGHWAYS, 120 SOUTH SPRING STREET.

COLLECT CHARGES AS INDICATED  
*[Signature]* 10-6-60

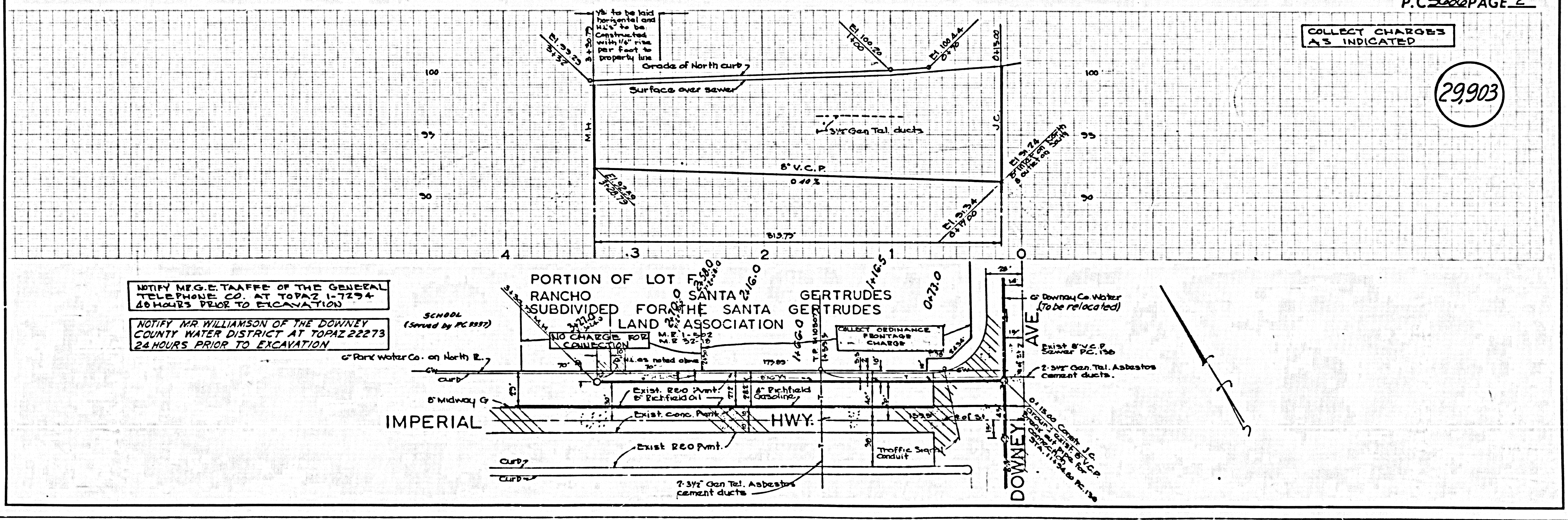
COUNTY OF LOS ANGELES, CALIFORNIA  
 APPROVED: JOHN A. LAMBE, COUNTY ENGINEER  
 APPROVED: C. F. COMPTON, CHIEF ENGINEER  
 CO. SAN. DIST. NO. 2  
 BY: *[Signature]* BY: *[Signature]*  
 8.77" SANITATION ENGINEER  
 CHECKED BY: *[Signature]* 10-7-60  
 OFFICE OF COUNTY ENGINEER, Rm. C. E. NO. 5456

SUBMITTED BY: *[Signature]*  
 ACTING LOS ANGELES REGIONAL ENGINEER, REG. C.E. NO. 7860

P.C. 5686 PAGE 2

COLLECT CHARGES AS INDICATED

29,903



NOTIFY M.E.G.E. TAFFE OF THE GENERAL  
 TELEPHONE CO. AT TOPAZ 1-7294  
 24 HOURS PRIOR TO EXCAVATION

NOTIFY MR. WILLIAMSON OF THE DOWNEY  
 COUNTY WATER DISTRICT AT TOPAZ 22273  
 24 HOURS PRIOR TO EXCAVATION

SCHOOL  
 (Served by PC 2327)

PORTION OF LOT F  
 RANCHO SUBDIVIDED FOR THE SANTA GERTRUDES  
 LAND ASSOCIATION

GERTRUDES  
 SANTA GERTRUDES

Downey Co. Water  
 (to be relocated)

8" Midway G

IMPERIAL HWY.

DOWNEY AVE.

Exist. 200 Pmt.

Exist. conc. Pmt.

Exist. 8" V.C.P. Sewer PC. 156

2-3/4" Cen. Tel. Asbestos cement ducts.

Exist. 200 Pmt.

2-3/4" Cen. Tel. Asbestos cement ducts.