

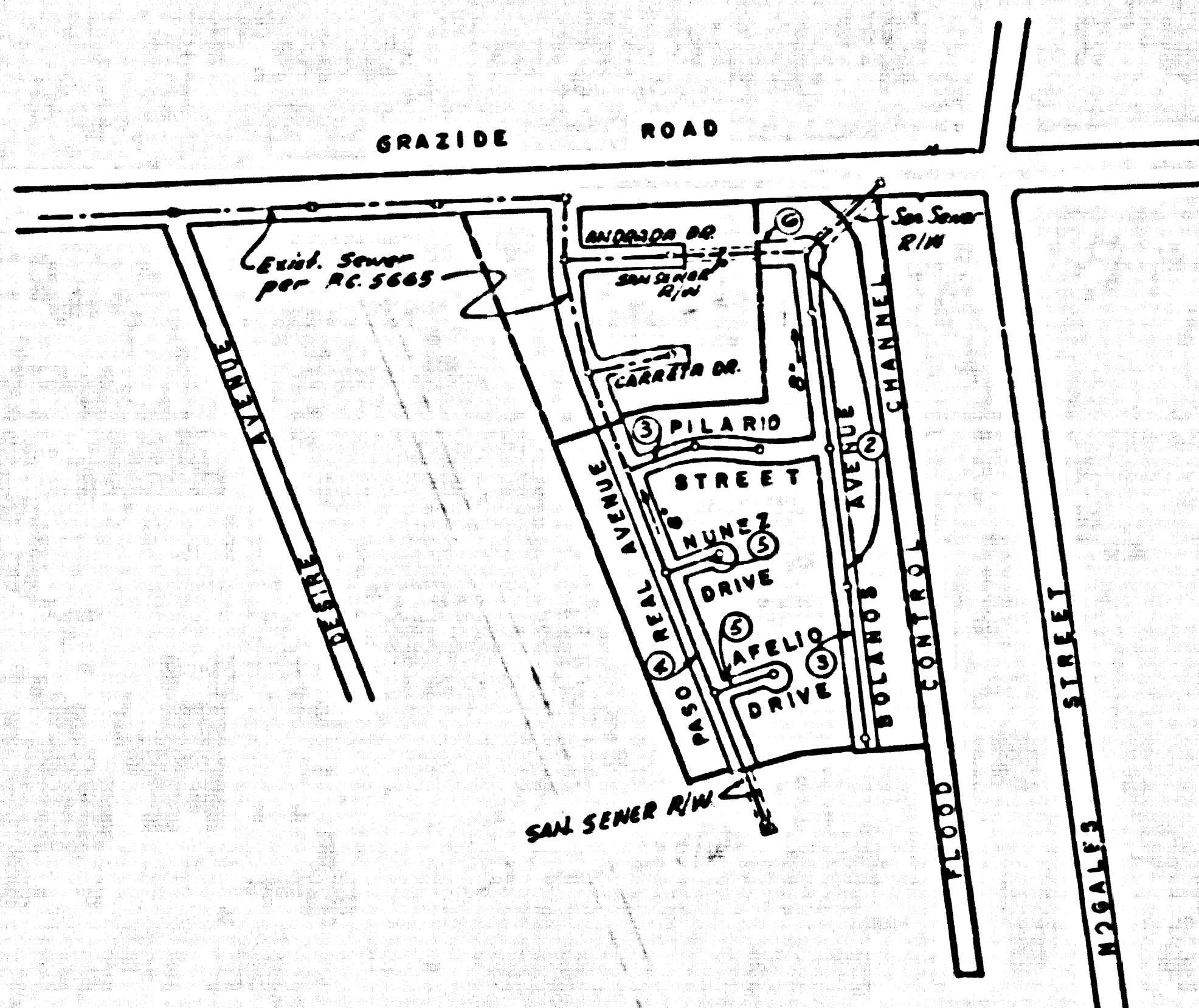
PUENTE BLDG. DIST. NO. 2

PROFILE ALIGNMENT AND GRADE OF
SANITARY SEWERS PAGE 1
 TO BE CONSTRUCTED IN
 TRACT N^o 26168

PRIVATE CONTRACT NO. 5689

W.S. 38
 3 SHEETS; 6 PAGES
 SCALE: HORIZ. 1" = 40' VERT. 1" = 4'
 DATE: OCTOBER 1960
 PREPARED IN THE OFFICES OF
DEVELOPMENT CONSULTANTS INC.
 1095 E. GREEN ST. PASADENA 5 CALIF.
 REG. C. E. NO. 9553

30741



A.M. 44-10 Elev 468.800 C.S.F. 1866-VZ ADJ 1958
 Fifth Ave & Bufile Ave 11' South of E of Pavement of
 Fifth Ave & an N/4 Prolongation of W/4 Edge of
 Pavement of Desiro Ave & Standard C.S. Man in Hand
 Not Stamped 44-10 1955 July 25-63

INDEX MAP
 SCALE 1" = 400'
 TRACT NO. 26168
 P.C. 5689

- NOTES:
1. PROFILE STAKES ON THE PROPERTY LINE OR PROPERTY LINES PRODUCED AT RIGHT ANGLES TO THE SEWER LINE AT THE CENTER LINE OF EACH MANHOLE.
 2. NO REPRESENTATIVE OF THE COUNTY ENGINEER WILL SURVEY OR LAY OUT ANY PORTION OF THE WORK.
 3. THE OWNER OR HIS AUTHORIZED REPRESENTATIVE SHALL FURNISH THE COUNTY ENGINEER WITH GRADE SHEETS AND STATIONING FOR ALL HOUSE LATERALS AND Y BRANCHES AND SHALL FURNISH STAKES FOR THEM AT THEIR PROPER LOCATIONS WITH STATIONING PLAINLY MARKED. ANY CHANGE IN LOCATION SHALL BE REQUESTED IN WRITING BY THE OWNER OR HIS REPRESENTATIVE.
 4. THE PRIVATE ENGINEER SHALL FURNISH THE HOUSE LATERAL DEPTH AT THE PROPERTY LINE BELOW THE TOP OF CURB ELEVATION FOR EACH HOUSE LATERAL ON THE GRADE SHEET.
 5. NO REVISIONS SHALL BE MADE IN THESE PLANS WITHOUT THE APPROVAL OF THE COUNTY ENGINEER.
 6. USE STANDARD MANHOLE FRAMES AND COVERS, S-117.
 7. USE STANDARD STRENGTH PIPE.
 8. USE CEMENT MORTAR OR "WEDGALOCK" OR "SPED-SEAL" FOR ALL V.C.P. JOINTS PER SPECS. SECS. 16 & 17.
 9. RESURFACE ALL TRENCH WITHIN PAVED AREA TO MEET L.A. COUNTY ROAD DEPT. OR CALIF. STATE HIGHWAY REQUIREMENTS IN ACCORDANCE WITH PERMITS.
 10. SPECIFY FOUR FEET OF SEWER AT POINTS OF INTERFERENCE WITH POLES, CASE NO. S-172.
 11. HOUSE LATERALS TO BE CONSTRUCTED WITH INVERTS AT PROPERTY LINE 6" FEET BELOW CURB GRADE.
 12. ALL STRUCTURES SHALL BE BRICK SEWER STRUCTURES, S-104.
 13. FOR ALLOWABLE LEAKAGE TEST USE FORMULA NO. 1, SPECS. SEC. 14.
 14. MANHOLE TOPS IN UNIMPROVED RIGHTS-OF-WAY TO BE SIX INCHES ABOVE FINISHED GRADE.
 15. THE CONTRACTOR SHALL NOTIFY THE CONSTRUCTION SUPERVISOR BY TELEPHONE, HARBOR 3-460, AT LEAST TWENTY-FOUR HOURS BEFORE STARTING ANY WORK UNDER THIS CONTRACT.
 16. STANDARD SPECIFICATIONS DATED OCTOBER 1958 APPLY IN THE CONSTRUCTION OF THIS PROJECT.

COLLECT CHARGES AS INDICATED
 7.27.60
 4-20-61

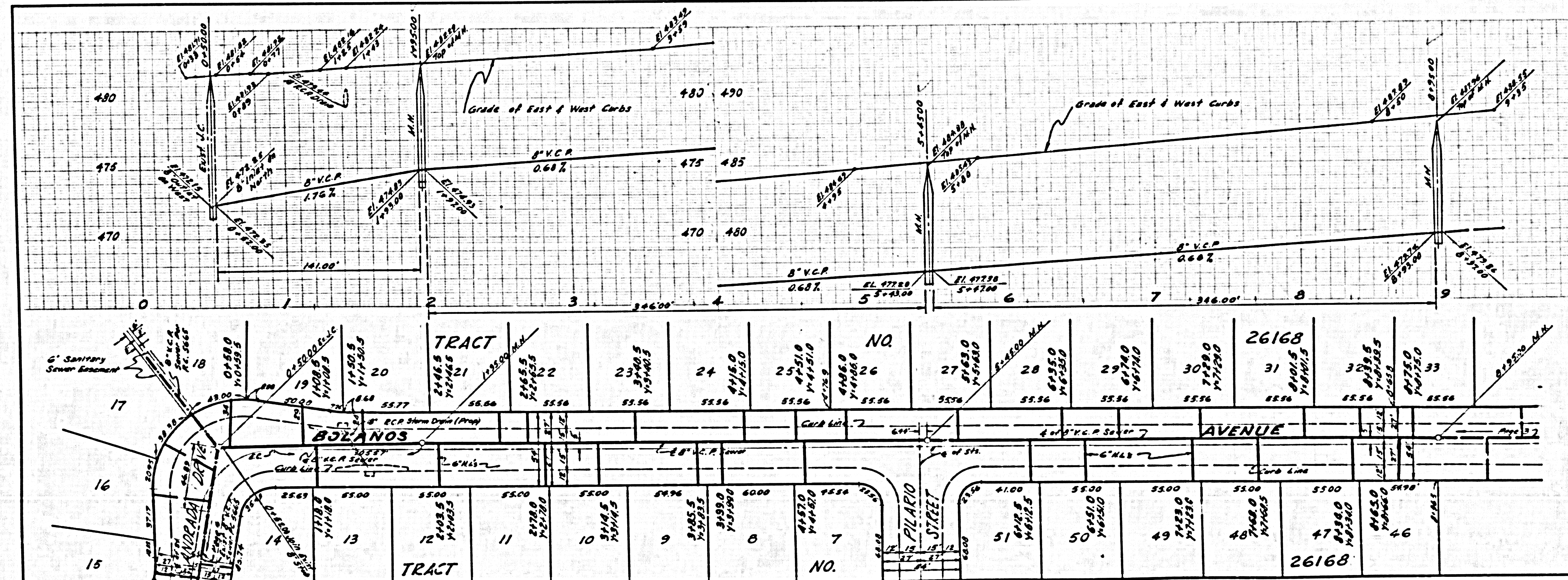
NO CONNECTIONS FOR THE DISPOSAL OF INDUSTRIAL WASTES SHALL BE MADE TO SEWERS SHOWN ON THESE DRAWINGS WITHOUT WRITTEN PERMISSION FROM THE CHIEF ENGINEER AND GENERAL MANAGER OF THE COUNTY SANITATION DISTRICTS.

NOTES:
 GRADE TO WHICH THIS IMPROVEMENT IS TO BE CONSTRUCTED ARE SHOWN ON PLANS AND PROFILE. GRADE POINTS FOR TOP OF CURBS, CENTER LINE OF STREETS OR CENTER LINE OF ALLEYS ARE SHOWN BY CIRCLES ON PROFILE. AT ALL POINTS BETWEEN DESIGNATED POINTS THE GRADE SHALL BE ESTABLISHED SO AS TO CONFORM TO A STRAIGHT LINE DRAWN BETWEEN SAID DESIGNATED POINTS.
 ELEVATIONS ARE IN FEET ABOVE U.S.C. & G.S. SEA LEVEL DATUM OF 1929.
 THIS DRAWING AND THE DATA HEREON ARE HEREBY MADE A PART OF THE SPECIFICATIONS.
 WORK SHALL BE CONSTRUCTED ACCORDING TO SPECIFICATIONS ON FILE IN THE OFFICE OF THE COUNTY ENGINEER AND SHALL BE PROSECUTED ONLY IN THE PRESENCE OF THE COUNTY ENGINEER.
 SHOULD WORK BE STOPPED BY THE CONTRACTOR WITHOUT OBTAINING A PERMIT TO EXCAVATE IN COUNTY STREETS FROM THE L.A. COUNTY ROAD DEPT. DISTRICT OFFICE NO. 7 AND PAY A FEE TO THE COUNTY ENGINEER ROOM.
 RECORD PLANS.
 APPROVAL OF THIS PLAN BY THE COUNTY OF LOS ANGELES DOES NOT CONSTITUTE A REPRESENTATION AS TO THE ACCURACY OF THE LOCATION OR THE EXISTENCE OR NON-EXISTENCE OF ANY UNDERGROUND UTILITY PIPE, OR STRUCTURE WITHIN THE LIMITS OF THIS PROJECT. THIS NOTE APPLIES TO ALL PAGES.
 IF WORK IS TO BE DONE IN A STATE HIGHWAY, A PERMIT MUST BE OBTAINED FROM THE STATE OF CALIFORNIA, DIVISION OF HIGHWAYS, 126 SOUTH SPRING STREET.

COUNTY OF LOS ANGELES, CALIFORNIA
 APPROVED JOHN A. LAMBE, COUNTY ENGINEER APPROVED C.R. COMPTON, CHIEF ENGINEER
 BY: [Signature] BY: [Signature]
 SANITATION ENGINEER OFFICE ENGINEER
 CHECKED BY: [Signature] 4-21-61
 OFFICE OF COUNTY ENGINEER, Rm. C. E. NO. 9406
 SUBMITTED: [Signature] 4-20-61
 SANITATION ENGINEER

P.C. 5689 PAGE 2

NO CHARGE FOR CONNECTIONS

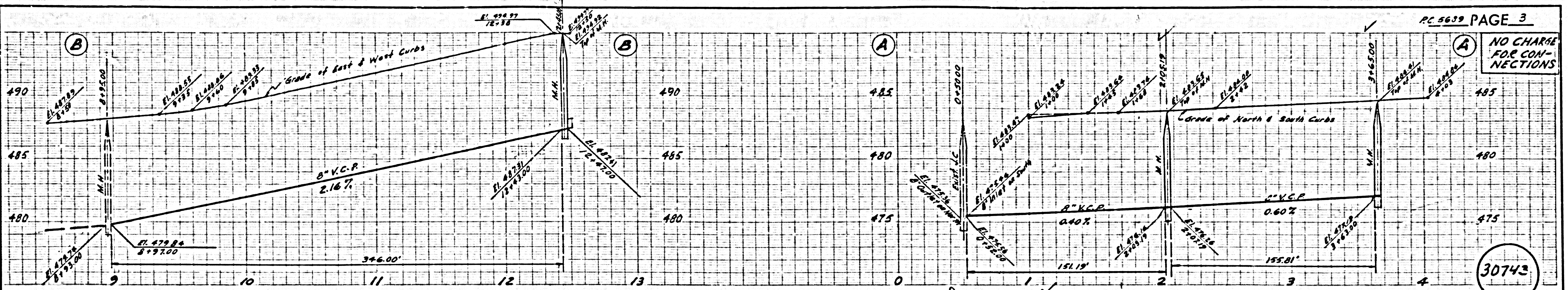


30742

TRACT NO 26168

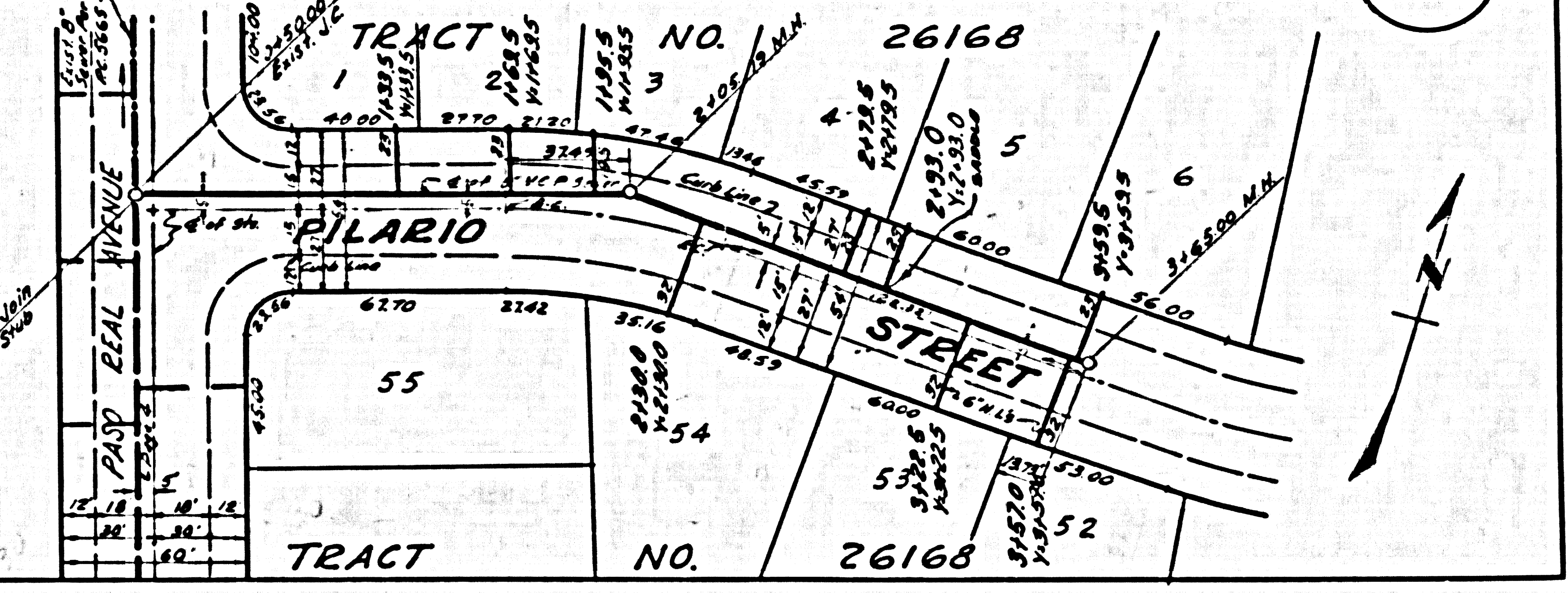
P.C. 2689

NO CHARGE FOR CONNECTIONS



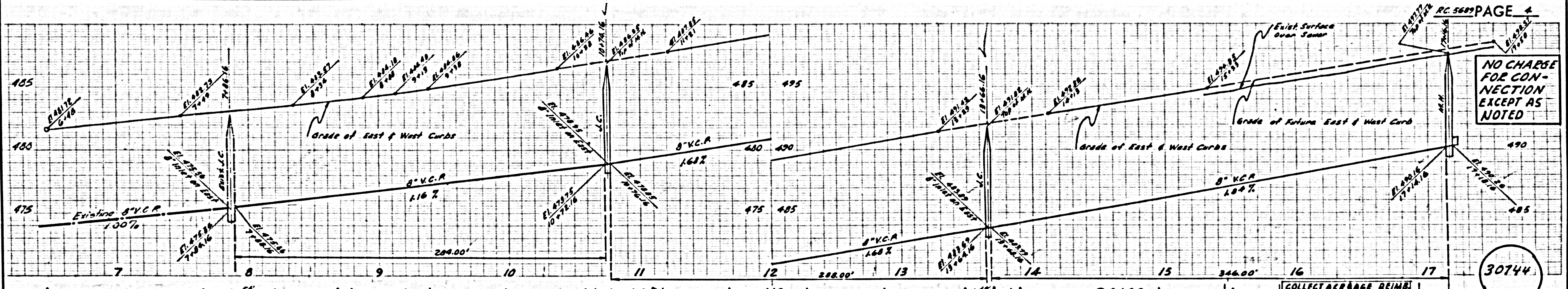
30743

33	34	35	36	37	38	39
8395.00 M.H.	8395.00 M.H.	8395.00 M.H.	8395.00 M.H.	8395.00 M.H.	8395.00 M.H.	8395.00 M.H.
55.56	55.56	55.56	55.56	55.56	55.56	55.56
BOLANOS AVENUE						
46	45	44	43	42	41	40
55.56	55.56	55.56	55.56	55.56	55.56	55.56
TRACT NO. 26168						



TRACT NO. 51818

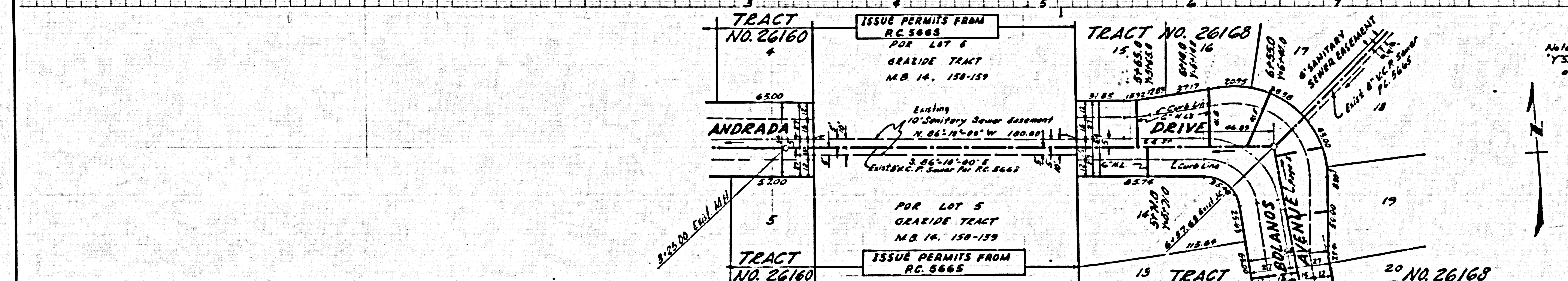
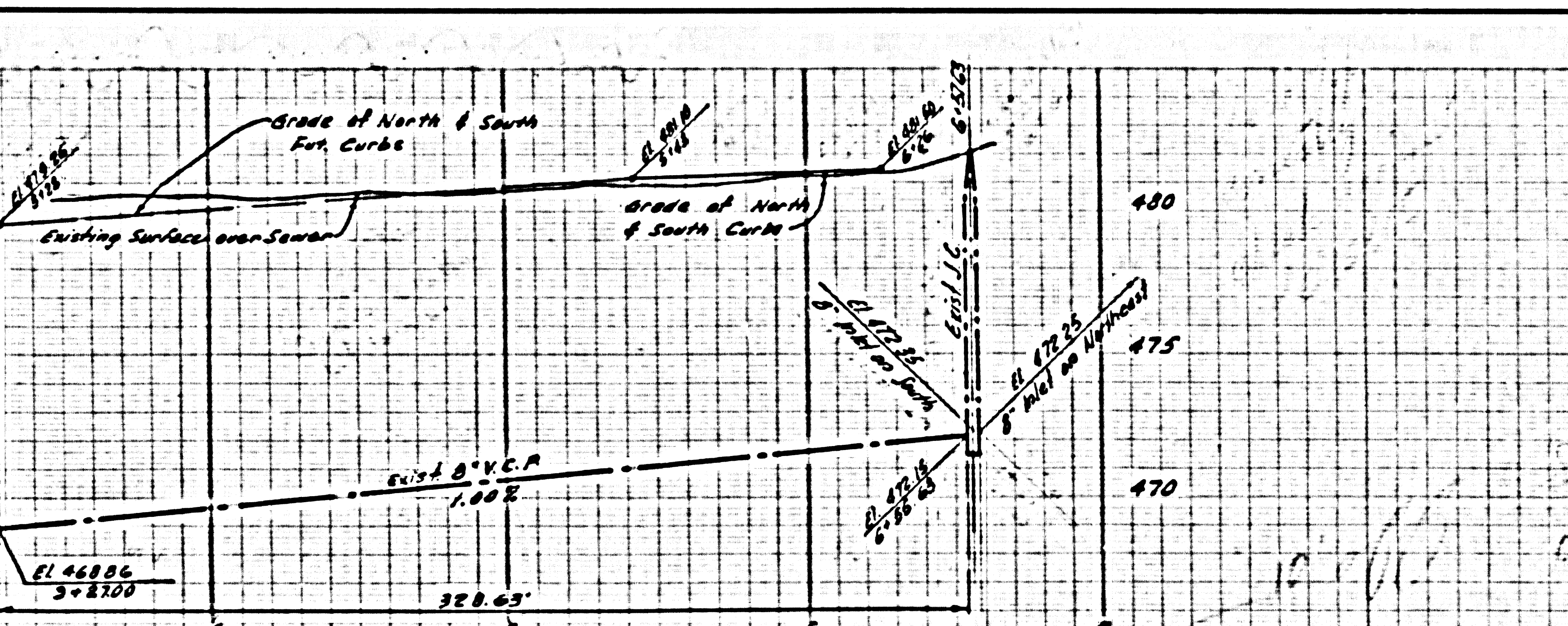
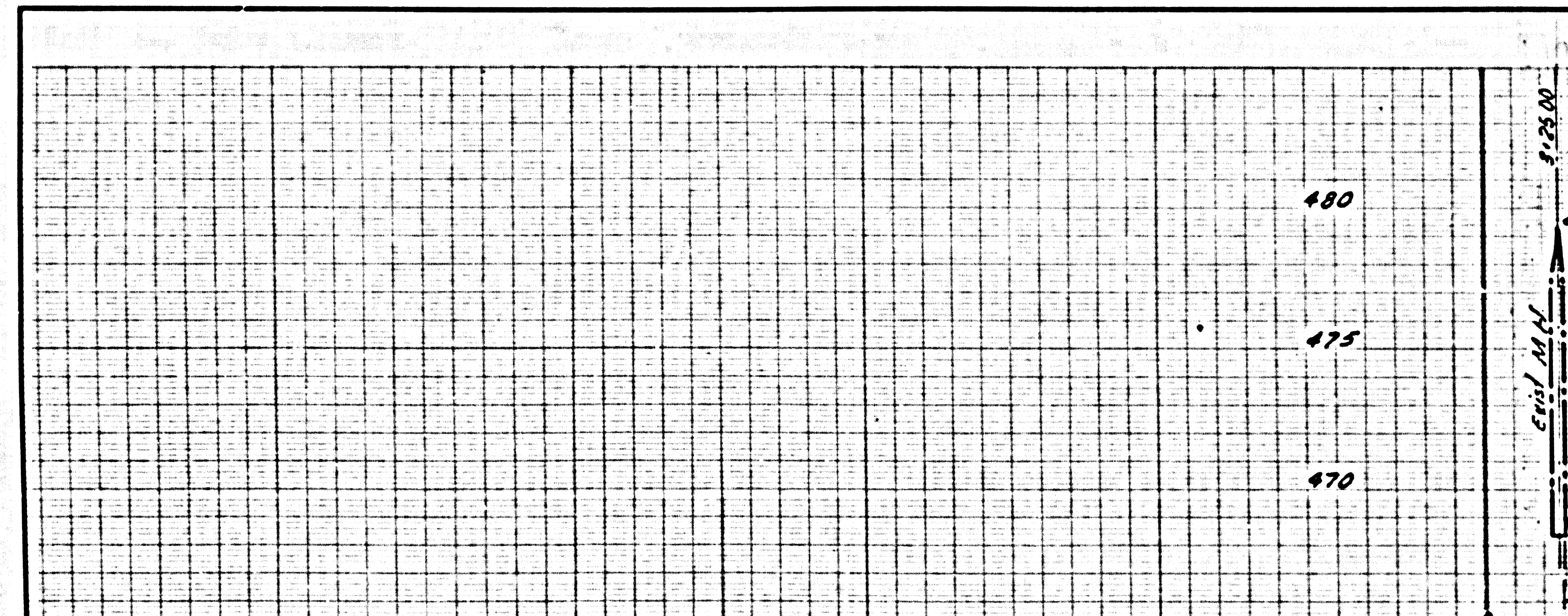
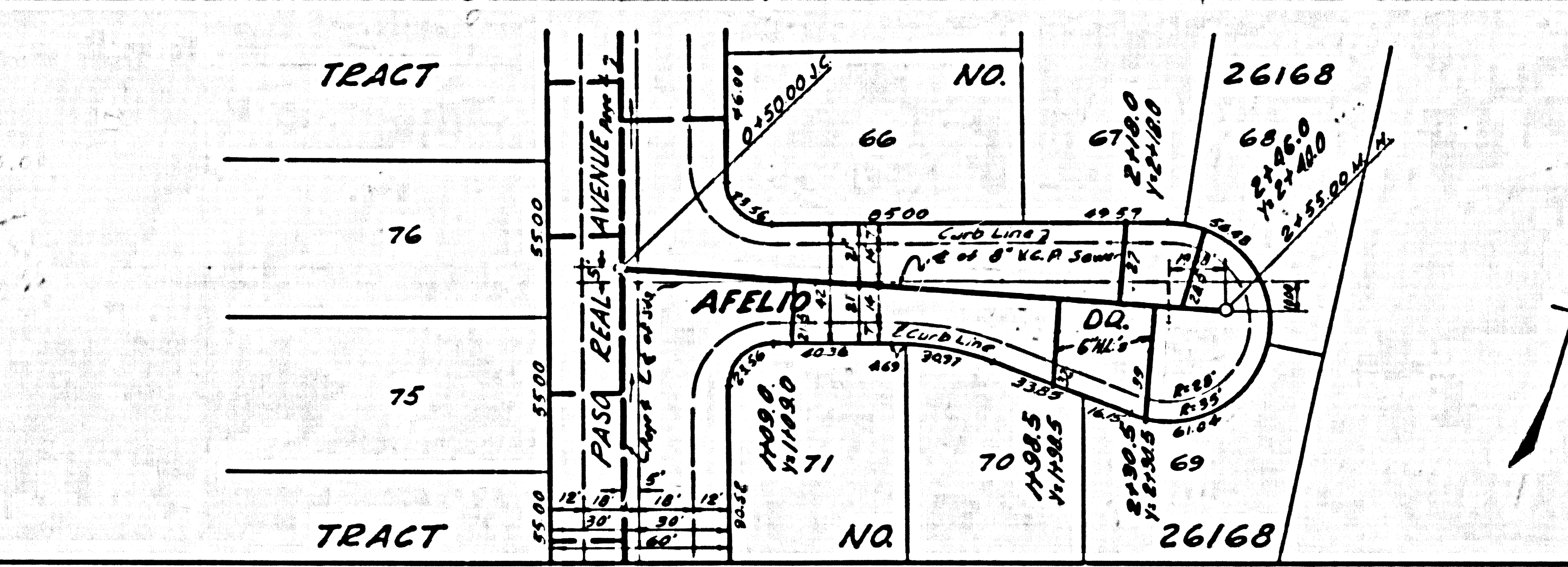
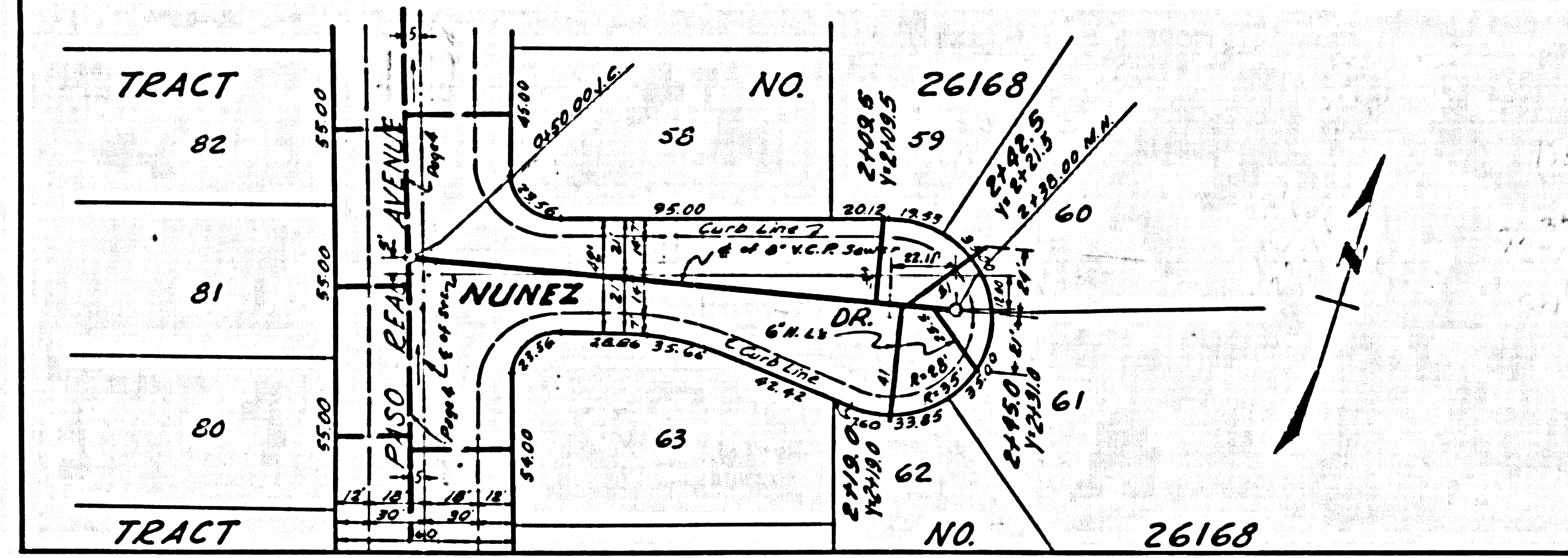
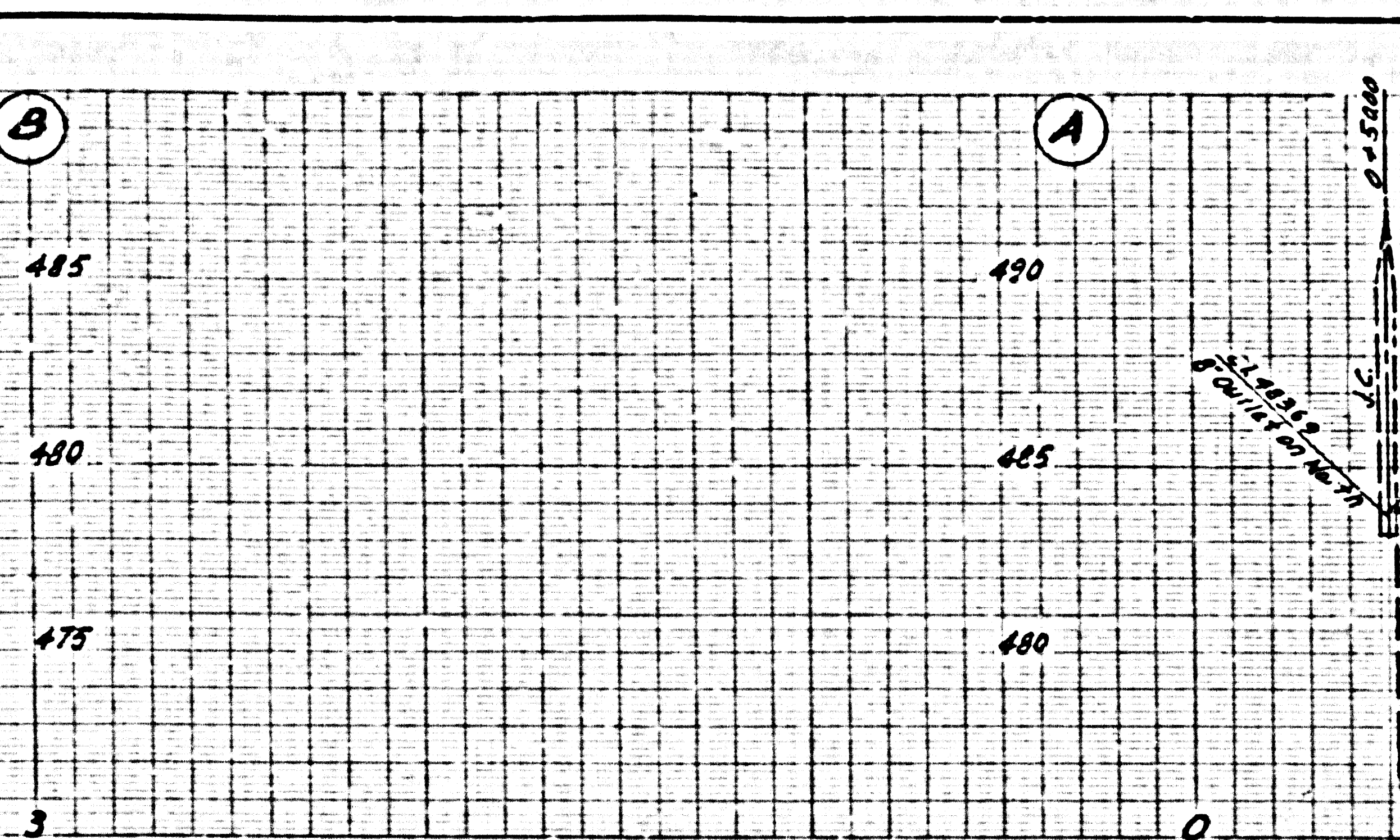
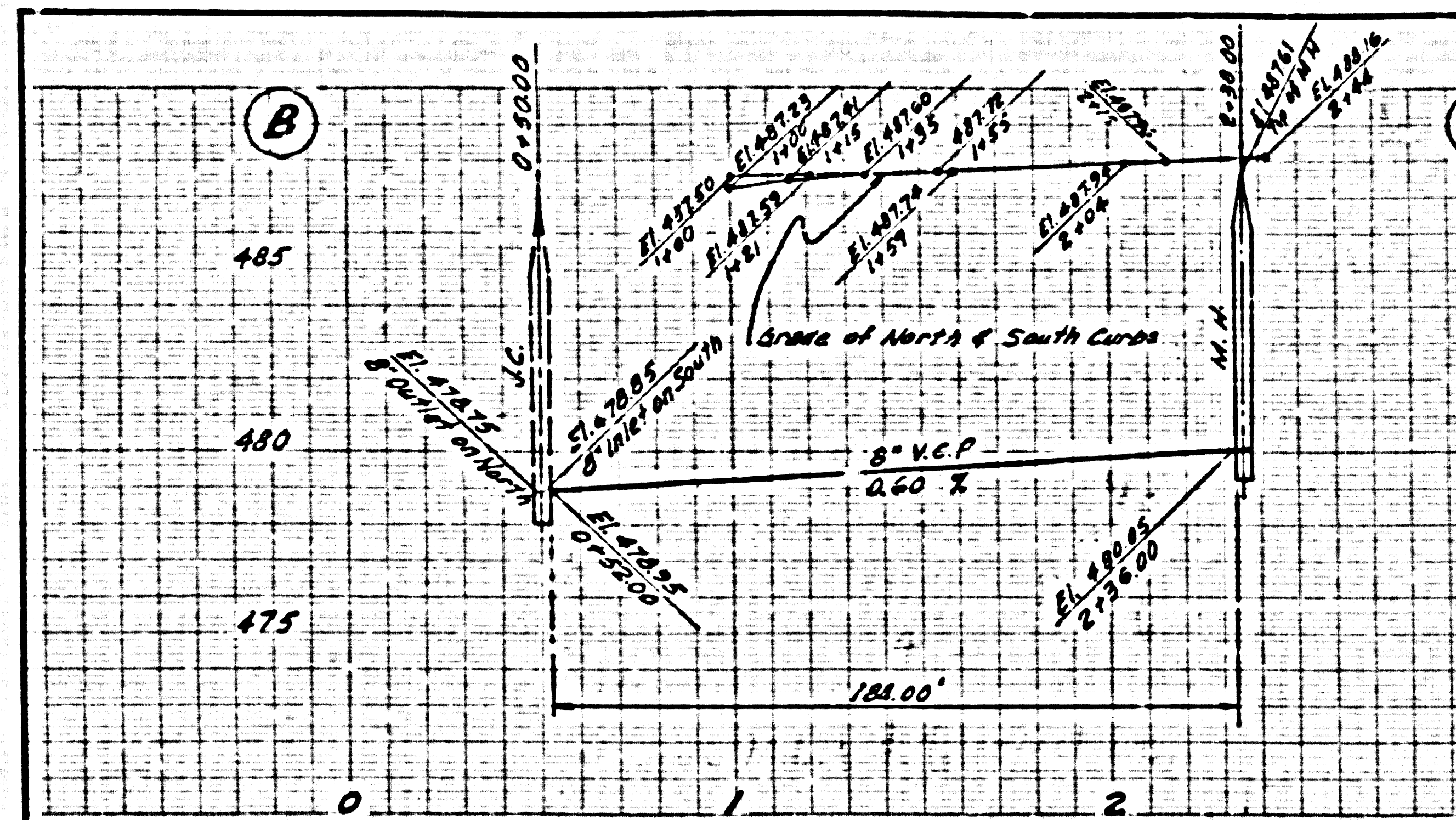
NO CHARGE FOR CONNECTION EXCEPT AS NOTED



30744

56	57	58	59	60	61	62	63	64	65	66	67	68	69	70	71	72	73
8395.00 M.H.	8395.00 M.H.	8395.00 M.H.	8395.00 M.H.	8395.00 M.H.	8395.00 M.H.	8395.00 M.H.	8395.00 M.H.	8395.00 M.H.	8395.00 M.H.	8395.00 M.H.	8395.00 M.H.	8395.00 M.H.	8395.00 M.H.	8395.00 M.H.	8395.00 M.H.	8395.00 M.H.	8395.00 M.H.
55.56	55.56	55.56	55.56	55.56	55.56	55.56	55.56	55.56	55.56	55.56	55.56	55.56	55.56	55.56	55.56	55.56	55.56
PASO REAL AVENUE																	
88	87	86	85	84	83	82	81	80	79	78	77	76	75	74	73	COLLECTOR'S REIMB. CALL CENTRAL OFFICE POR LOT 5 GRAZIDE TRACT M.B. 14, 152-159 10' Sanitary Sewer Easement N. 16°-33'-37" W. 173.48' S. 16°-33'-37" E. 173.48' POR LOT 5 GRAZIDE TRACT M.B. 14, 152-159 COLLECTOR'S REIMB. CALL CENTRAL OFFICE	
TRACT NO. 26168																	

P.C. 2822



TRACT NO. 26168

TRACT NO. 26168