

B.M. S.Y. 2500 ELEV. 85.251 (1955) SET LOG NAIL IN N. COR. ROSECRANS AVE. CO. COR. DET. N.E. COR. ROSECRANS AVE. & ARDIS AVE. - NORWALK QUAD

BELLFLOWER BLDG. DIST. NO. 4.07

PROFILE ALIGNMENT AND GRADE OF **P.C. 5691**
SANITARY SEWERS PAGE 1

MAPLEWOOD AVE.
 PRIVATE CONTRACT NO. 5691

W.S. 33
 1 SHEET OF 2 PAGES

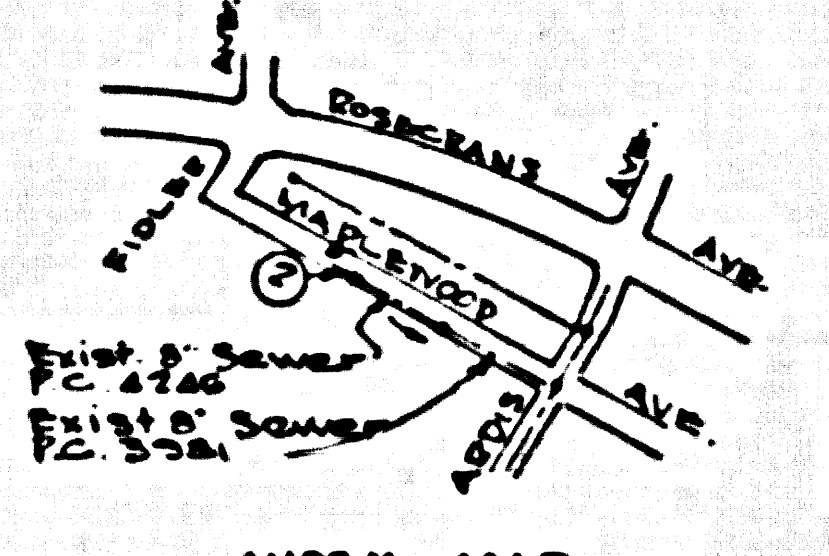
SCALE: HORIZ. 1" = 40' VERT. 1" = 4'
 SEPTEMBER, 1960
 PREPARED IN THE OFFICES OF
OLSON SURVEYING SERVICE

29,876

BY *[Signature]*
 REG. C. E. NO. 7470

FOR LEGEND SEE PLAN NO. S.A-64

- NOTES:
1. PROVIDE STAKES ON THE PROPERTY LINE OR PROPERTY LINES PRODUCED AT RIGHT ANGLES TO THE SEWER LINE AT THE CENTER LINE OF EACH MANHOLE.
 2. NO REPRESENTATIVE OF THE CITY ENGINEER WILL SURVEY OR LAY OUT ANY PORTION OF THE WORK.
 3. THE OWNER OR HIS AUTHORIZED REPRESENTATIVE SHALL FURNISH THE CITY ENGINEER WITH GRADE SHEETS AND STATIONINGS FOR ALL HOUSE LATERALS AND Y BRANCHES AND SHALL PROVIDE STAKES FOR 1/4" INCH AT THEIR PROPER LOCATIONS WITH STATIONING PLAINLY MARKED. ANY CHANGE IN LOCATION SHALL BE REQUESTED IN WRITING BY THE OWNER OR HIS REPRESENTATIVE.
 4. THE PRIVATE ENGINEER SHALL FURNISH THE HOUSE LATERAL DEPTH AT THE PROPERTY LINE BELOW THE TOP OF CURB ELEVATION FOR EACH HOUSE LATERAL ON THE GRADE SHEET.
 5. NO REVISIONS SHALL BE MADE IN THESE PLANS WITHOUT THE APPROVAL OF THE CITY ENGINEER.
 6. USE STANDARD MANHOLE FRAMES AND COVERS, 5-11/2" COVER "B" ROAD "S" SEWER.
 7. USE STANDARD STRENGTH PIPE.
 8. USE CEMENT MORTAR OR "WEDGELOCK" OR "SPREAD SEAL" FOR ALL V.C.P. JOINTS PER S.P.C.S. SECT. 10 & 11.
 9. RESURFACE ALL TRENCH WITHIN PAVED AREA TO MEET CITY OF BELLFLOWER OR CALIF. STATE HIGHWAY REQUIREMENTS IN ACCORDANCE WITH PERMITS.
 10. ENCASE FOUR FEET OF SEWER AT POINTS OF INTERFERENCE WITH POLES, CASE III, 5-11/2".
 11. HOUSE LATERALS TO BE CONSTRUCTED WITH INVERTS AT PROPERTY LINE 0 FEET BELOW CURB GRADE.
 12. ALL STRUCTURES SHALL BE BRICK SEWER STRUCTURES 5-11/2" DIA. EXCEPT AS NOTED.
 13. FOR ALLOWABLE LEAKAGE TEST USE FORMULA NO. 1 S.P.C.S. SECT. 14.
 14. MANHOLE TOPS IN UNIMPROVED AREAS OF WAY TO BE 22 INCHES ABOVE FINISHED GRADE.
 15. THE CONTRACTOR SHALL NOTIFY THE CONSTRUCTION DIVISION BY TELEPHONE, MADISON 5-0700, AT LEAST TWENTY-FOUR HOURS BEFORE STARTING ANY WORK UNDER THIS CONTRACT.
 16. STANDARD SPECIFICATIONS DATED OCTOBER 18, 1960 ON FILE IN CITY SHALL APPLY IN THE CONSTRUCTION OF THIS PROJECT.



INDEX MAP
 P.C. 5691
 SCALE 1" = 600'

NO CHARGE FOR CONNECTIONS
 2/22/60

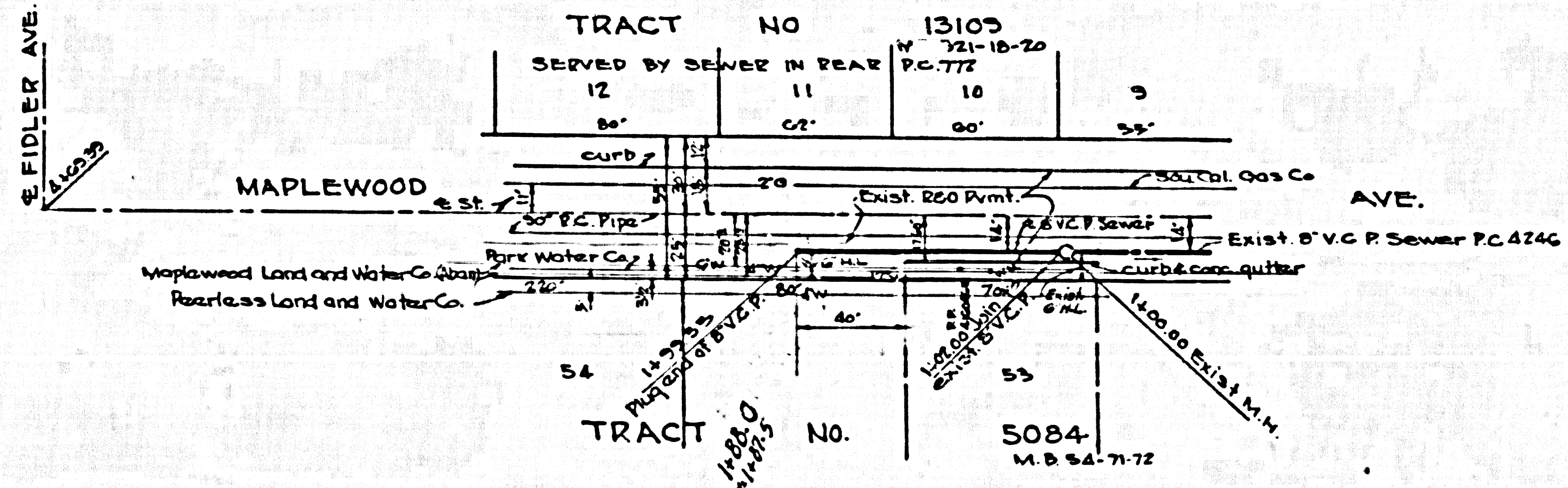
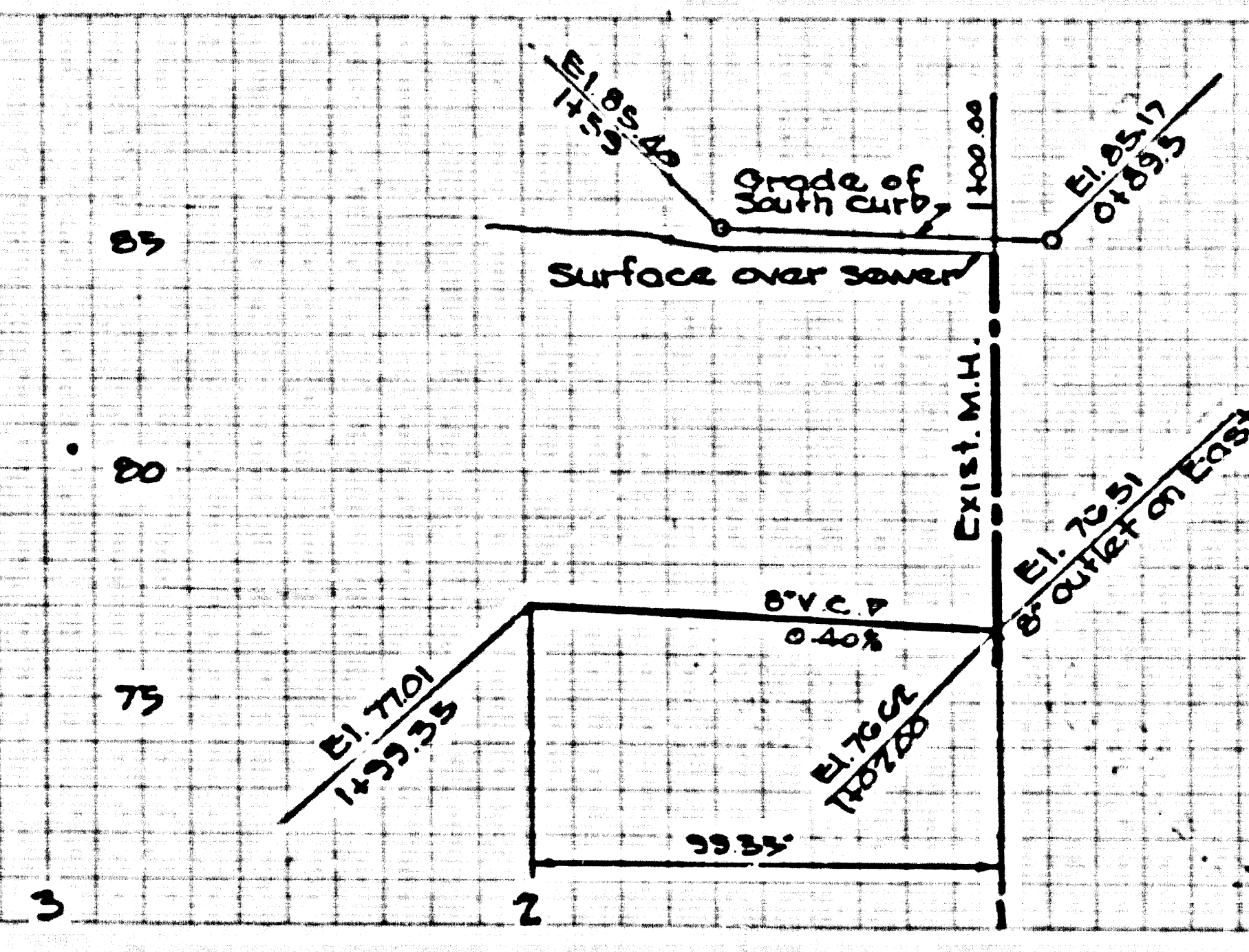
NOTE:
 GRADES TO WHICH THIS IMPROVEMENT IS TO BE CONSTRUCTED ARE SHOWN ON PLANS AND PROFILES. GRADE POINTS FOR TOP OF CURB, CENTER LINE OF STREETS, OR CENTER LINE OF ALLEYS ARE SHOWN BY CIRCLES ON PROFILES AT ALL POINTS BETWEEN DESIGNATED POINTS. THE GRADE SHALL BE ESTABLISHED SO AS TO CORRESPOND TO A STANDBY LINE DRAWN BETWEEN SAID DESIGNATED POINTS.
 ELEVATIONS ARE IN FEET ABOVE U.S.C. & G.S. SEA LEVEL DATUM OF 1929.
 THIS DRAWING AND THE DATA HEREON ARE HEREBY MADE A PART OF THE SPECIFICATIONS.
 WORK SHALL BE CONSTRUCTED ACCORDING TO SPECIFICATIONS ON FILE IN THE OFFICE OF THE CITY ENGINEER AND SHALL BE PROSECUTED ONLY IN THE PRESENCE OF THE CITY ENGINEER.
 BEFORE WORK CAN BE STARTED THE CONTRACTOR MUST OBTAIN A PERMIT TO EXCAVATE IN CITY STREETS FROM THE CITY OF BELLFLOWER ROAD DEPT. 98952 BELLMOUNT ST. AND MAKE A DEPOSIT WITH THE CITY OF BELLFLOWER (P.A.S.) SUPPLEMENT 317. SUFFICIENT TO COVER THE COST OF CONSTRUCTION INSPECTION AND RECORD PLANS.
 APPROVAL OF THIS PLAN BY THE COUNTY OF LOS ANGELES DOES NOT CONSTITUTE A REPRESENTATION AS TO THE ACCURACY OF THE LOCATION OR THE EXISTENCE OR NON-EXISTENCE OF ANY UNDERGROUND UTILITY PIPE, OR STRUCTURE WITHIN THE LIMITS OF THIS PROJECT. THIS NOTE APPLIES TO ALL PAGES.
 IF WORK IS TO BE DONE IN A STATE HIGHWAY, A PERMIT MUST BE OBTAINED FROM THE STATE OF CALIFORNIA, DIVISION OF HIGHWAYS, 126 SOUTH SPRING STREET.

CITY OF BELLFLOWER, CALIFORNIA
 APPROVED, JOHN A. LAMBIE, CITY ENGINEER APPROVED, C.E. CHAPMAN, CHIEF ENGINEER
 CO. SAN. DIST. NO. 2
 BY *[Signature]* BY *[Signature]*
 ASST. SANITATION ENGINEER OFFICE ENGINEER
 CHECKED BY *[Signature]* 10-14-60
 OFFICE OF CITY ENGINEER, REG. C. E. NO. 2404

P.C. 5691 PAGE 2

NO CHARGE FOR CONNECTIONS

29,877



NO. 100 CAL. GAS
 FALL WATER
 STORM DRAIN