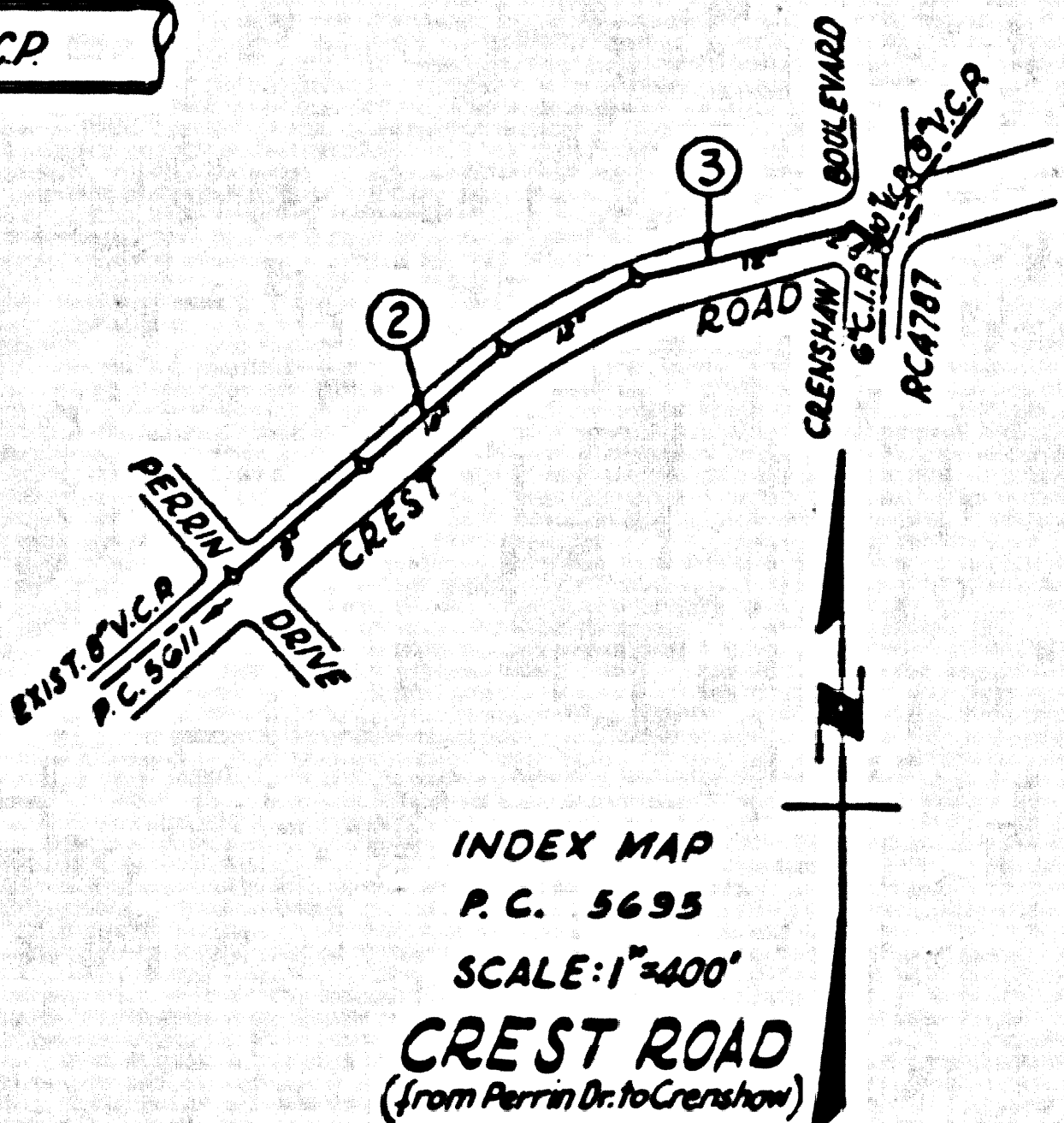
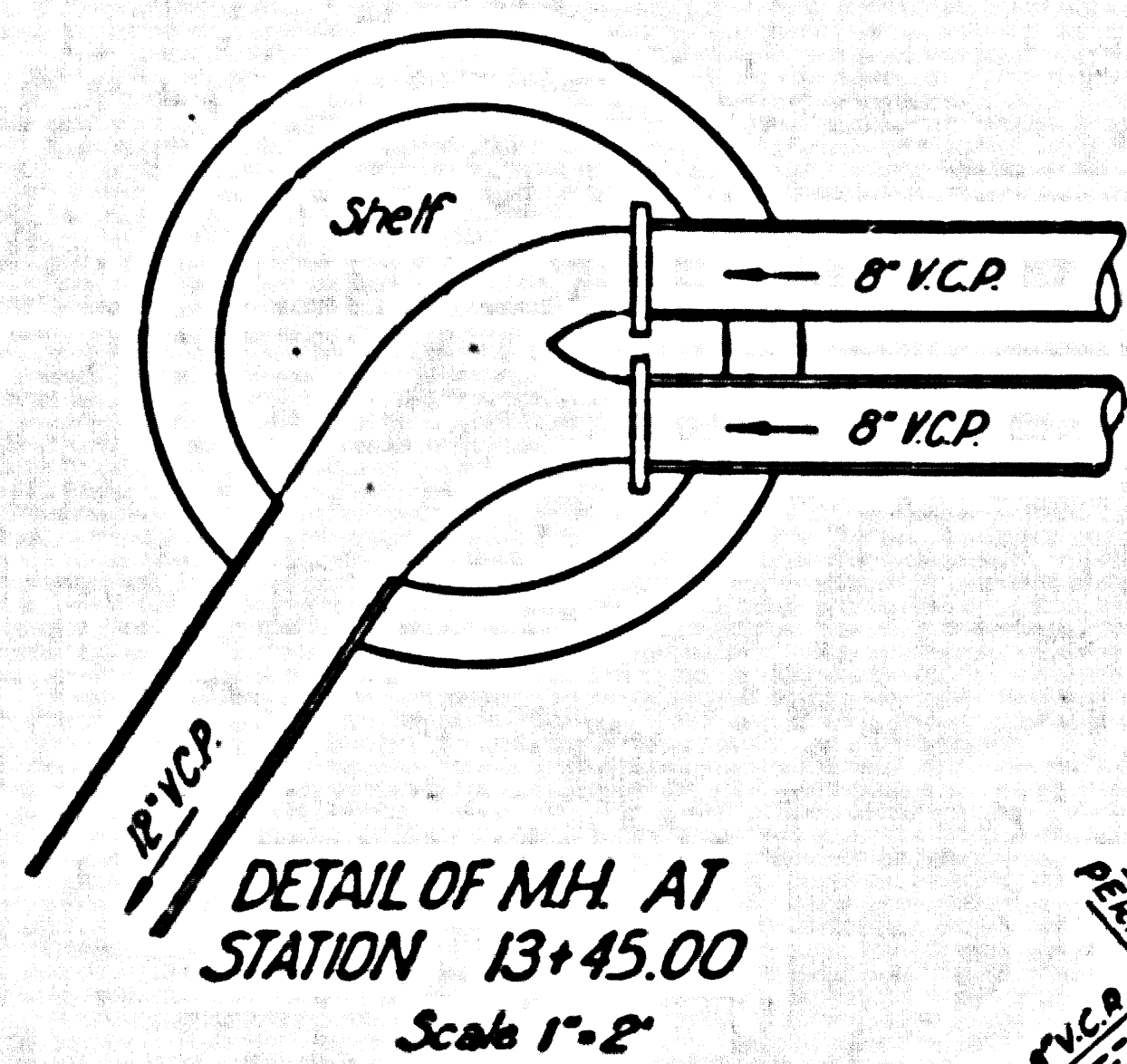
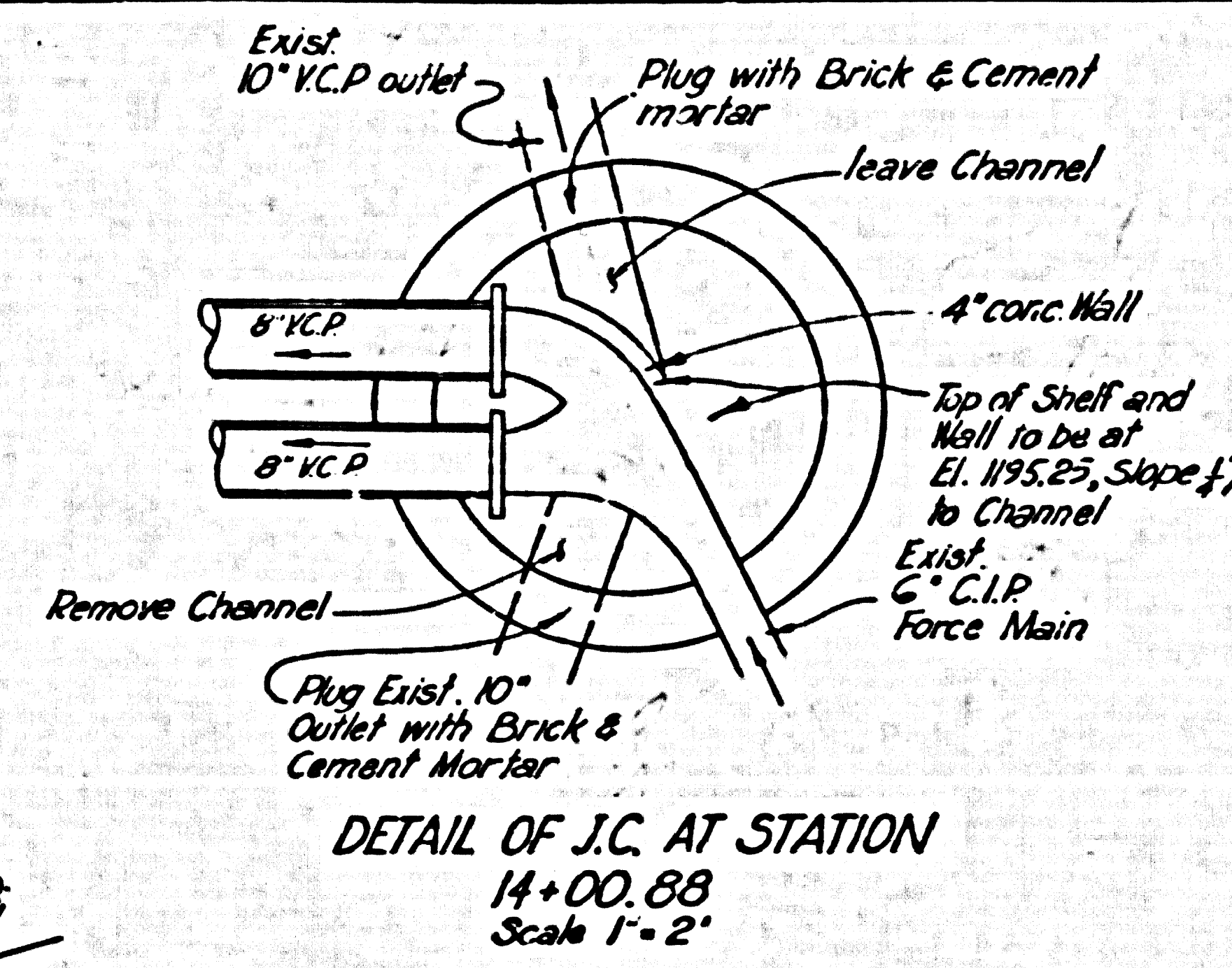


Bench Mark
County Surveyor B.M. U.S.C.G.S. Standard
Disc Stamped Q 786-1946 set flush with ground
45.2' N. of E of Palos Verdes Drive North 47.4'
East of Norbonne Avenue Elev. 353.518'



REVISED SEWER PAGE 3 STA. 13+45.00
TO STA. 14+00.88, DELETED 12" V.C.P., ADDED
8" DOUBLE BARREL SUMPION

Jack C. Louinger
Approved Office of County Engineer



Note: Plug 10" inlet on south of J.C. at station 14+32.30 on Page 2 of P.C. 4787 with brick & cement mortar as a requirement of this plan.

NO CHARGE FOR CONNECTIONS
Arthur B. Ready

Approved *Joe R. Knight*
Industrial Waste Division

DOUBLE SCALE LOMITA BLDG. DIST. NO. 7.1

- NOTES
- PROVIDE STAKES ON THE PROPERTY LINE OR PROPERTY LINE PRODUCED AT RIGHT ANGLES TO THE SEWER LINE AT THE CURB LINE OF EACH MANHOLE.
 - NO REPRESENTATIVE OF THE COUNTY ENGINEER WILL SURVEY OR LAY OUT ANY PORTION OF THE WORK.
 - THE OWNER OR HIS AUTHORIZED REPRESENTATIVE SHALL FURNISH THE COUNTY ENGINEER WITH GRADE SHEETS AND STATIONING FOR ALL HOUSE LATERALS AND V BRANCHES AND SHALL PROVIDE STAKES FOR THEM AT THEIR PROPER LOCATIONS WITH STATIONING PLAINLY MARKED. ANY CHANGE IN CALCULATION SHALL BE FURNISHED IN WRITING BY THE OWNER OR HIS REPRESENTATIVE.
 - THE PRIVATE ENGINEER SHALL FURNISH THE HOUSE LATERAL DEPTH AT THE PROPERTY LINE BELOW THE TOP OF CURB ELEVATION FOR EACH HOUSE LATERAL ON THE GRADE SHEET.
 - NO REVISIONS SHALL BE MADE IN THESE PLANS WITHOUT THE APPROVAL OF THE COUNTY ENGINEER.
 - USE STANDARD MANHOLE FRAMES AND COVERS, S=117, EXCEPT AS NOTED.
 - USE STANDARD STRENGTH PIPE EXCEPT AS NOTED.
 - USE CHAMFER MORTAR OR "WEDGE-LOCK" OR "SPREAD-SEAL" FOR ALL V.C.P. JOINTS PER SPEC., SECS. 36 & 41.
 - RESURFACE ALL TRENCH WITHIN PAVED AREA TO MEET L.A. COUNTY ROAD DEPT. OR CALIF. STATE HIGHWAY REQUIREMENTS IN ACCORDANCE WITH PERMITS.
 - ENCASE FOUR FEET OF SEWER AT POINTS OF INTERFERENCE WITH POLES, CASE NO. 1-172.
 - ALL STRUCTURES SHALL BE BRICK SEWER STRUCTURE, S=114, EXCEPT AS NOTED.
 - FOR ALLOWABLE SEALAGE TEST USE FORMULA NO. 1, SPEC. SEC. 54.
 - MANHOLE TOPS IN UNIMPROVED PORTS OF WAY TO BE SIX INCHES ABOVE FINISHED GRADE.
 - THE CONTRACTOR SHALL NOTIFY THE CONSTRUCTION & STORM DRAIN DIVISION BY TELEPHONE, MAILBOX 9-67, BY 8:00 AM AT LEAST TWENTY-FOUR HOURS BEFORE STARTING ANY WORK UNDER THIS CONTRACT.
 - STANDARD SPEC. DATED OCT. 16, 1964 APPLY IN THE CONSTRUCTION OF THIS PROJECT.

ENGINEERING SERVICE CORPORATION
1127 W. WASHINGTON BLVD.
LOS ANGELES 15, CALIF. RI. 9-7281

REVISIONS	TRACED BY <i>C.F.</i>
	DESIG'D BY <i>C.M.R.</i>
	CK'D BY <i>A.A.M.E.</i>
	SUBMITTED

SUB STRUCTURES OK'D

W. O. NO.	DWG. NO.	DATE	SCALE	L.S.	P.B.
7303-3		Sept. 1960	As noted	L.L.	

PROFILE ALIGNMENT AND GRADE OF P.C. 5695
SANITARY SEWERS PAGE 1
TO BE CONSTRUCTED IN
CREST ROAD
(FROM PERRIN DR. TO CRENSHAW BLVD.)
J.N. 0354.68

PRIVATE CONTRACT NO. 5695

W.S. 27
2 SHEETS, 3 PAGES
SCALE: VERT. 1"=4' HORIZ. 1"=40'
SEPT. 1960
PREPARED IN THE OFFICES OF
ENGINEERING SERVICE CORPORATION

30048

FOR LEGEND SEE PLAN NO. S-A-64

GRABES DO NOTED WHICH THIS IMPROVEMENT IS TO BE CONSTRUCTED ARE SHOWN ON PLANS AND PROFILE. GRADE POINTS FOR TOP OF CURB, CENTER LINE OF STREETS, OR CENTER LINE OF ALLEYS ARE SHOWN BY CIRCLES ON PROFILES. AT ALL POINTS BETWEEN DESIGNATED POINTS THE GRADE SHALL BE ESTABLISHED SO AS TO CONFORM TO A STRAIGHT LINE DRAWN BETWEEN SAID DESIGNATED POINTS.

ELEVATIONS ARE IN FEET ABOVE U.S.C. & G.S. SEA LEVEL DATUM ON 1929.

THIS DRAWING AND THE DATA HEREON ARE HEREBY MADE A PART OF THE SPECIFICATIONS.

WORK SHALL BE CONSTRUCTED ACCORDING TO SPECIFICATIONS ON FILE IN THE OFFICE OF THE COUNTY ENGINEER AND SHALL BE FURNISHED ONLY IN THE PRESENCE OF THE COUNTY ENGINEER.

WORK SHALL BE STARTED WITHIN THE TIME FRAMEWORK OF THE SPECIFICATIONS. THE CONTRACTOR MUST OBTAIN A PERMIT TO EXCAVATE IN COUNTY STREETS FROM THE L.A. COUNTY ROAD DEPT., DISTRICT OFFICE NO. 1, AND PAY A FEE TO THE COUNTY ENGINEER, ROOM 324-PAN AMERICAN BUILDING, 333 SO. BROADWAY, TO COVER THE COST OF CONSTRUCTION INSPECTION AND RECORD PLANS.

APPROVAL OF THIS PLAN BY THE COUNTY OF LOS ANGELES SHALL NOT CONSTITUTE REPRESENTATION AS TO THE ACCURACY OF THE LOCATION OF OR THE EXISTENCE OR NON-EXISTENCE OF ANY UNDERGROUND UTILITY PIPE, OR STRUCTURE WITHIN THE LIMITS OF THIS PROJECT. THIS NOTE APPLIES TO ALL PAGES.

IF WORK IS TO BE DONE IN A STATE HIGHWAY, A PERMIT MUST BE OBTAINED FROM THE STATE OF CALIFORNIA, DIVISION OF HIGHWAYS, 128 SOUTH SPRING STREET.

COUNTY OF LOS ANGELES, CALIFORNIA

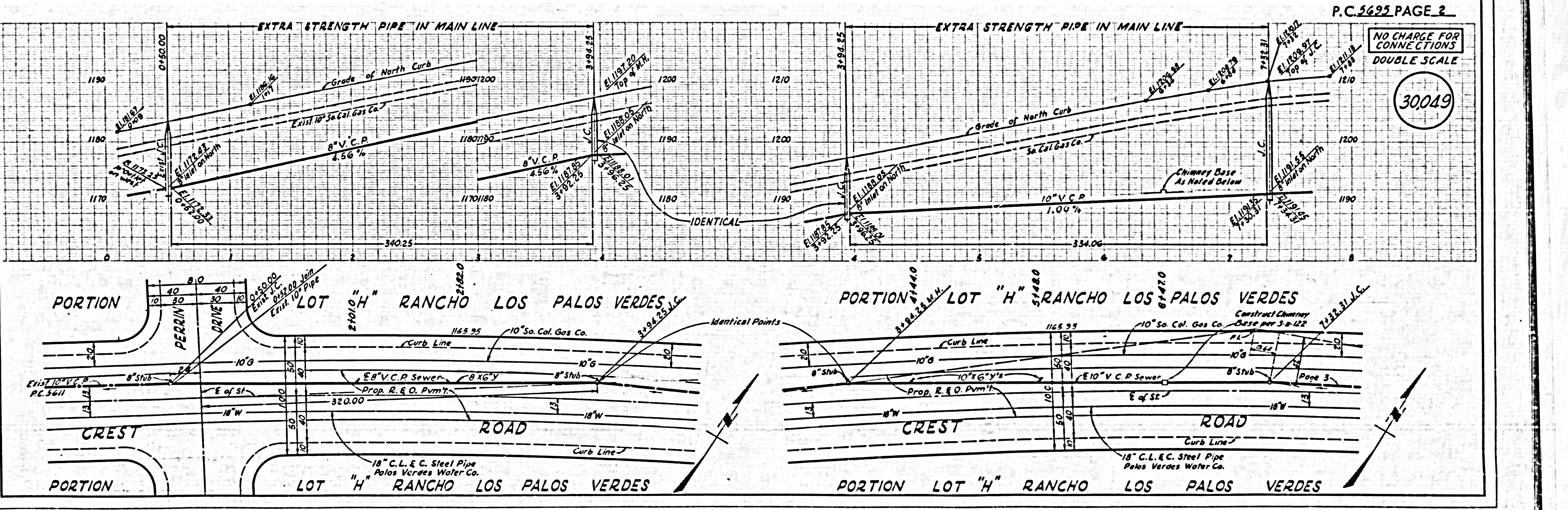
APPROVED, JOHN A. LAMBE, COUNTY ENGINEER

APPROVED, C. A. COMPTON, CHIEF ENGINEER
CO. SAN. DIST. NO. 6

BY *Jack C. Louinger* BY *W. J. Keith*
ALTY. SANITATION ENGINEER OFFICE ENGINEER

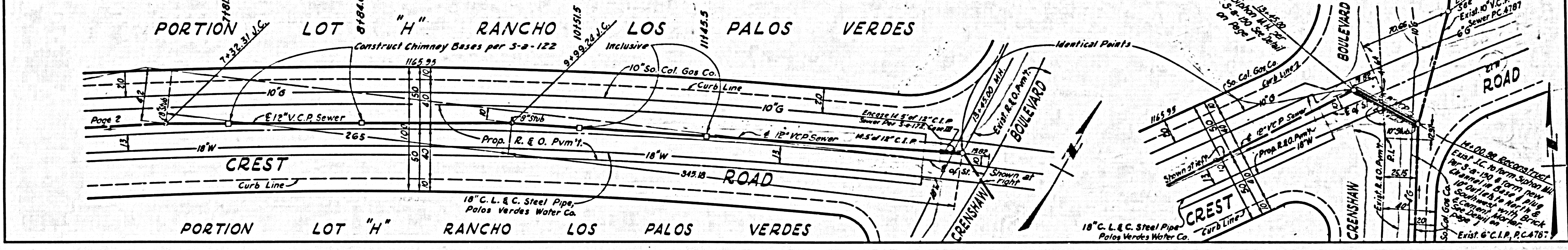
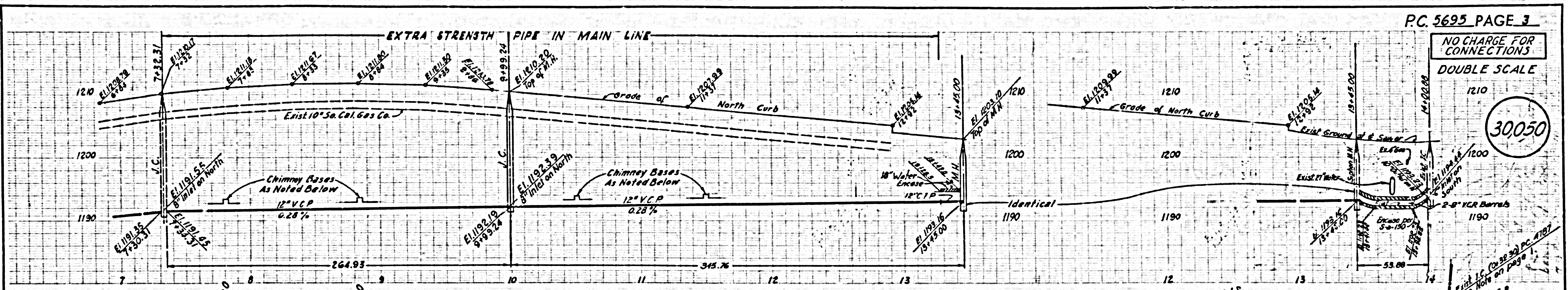
CHECKED BY *W. J. Keith*
OFFICE OF COUNTY ENGINEER, BLDG. C. E. NO. 3046

SUBMITTED BY *Jack C. Louinger*
PALOS VERDES-CENTINELA VALLEY REGIONAL ENGINEER



NO CHARGE FOR CONNECTIONS
DOUBLE SCALE

30,050



SEE PLAN FOR EXH