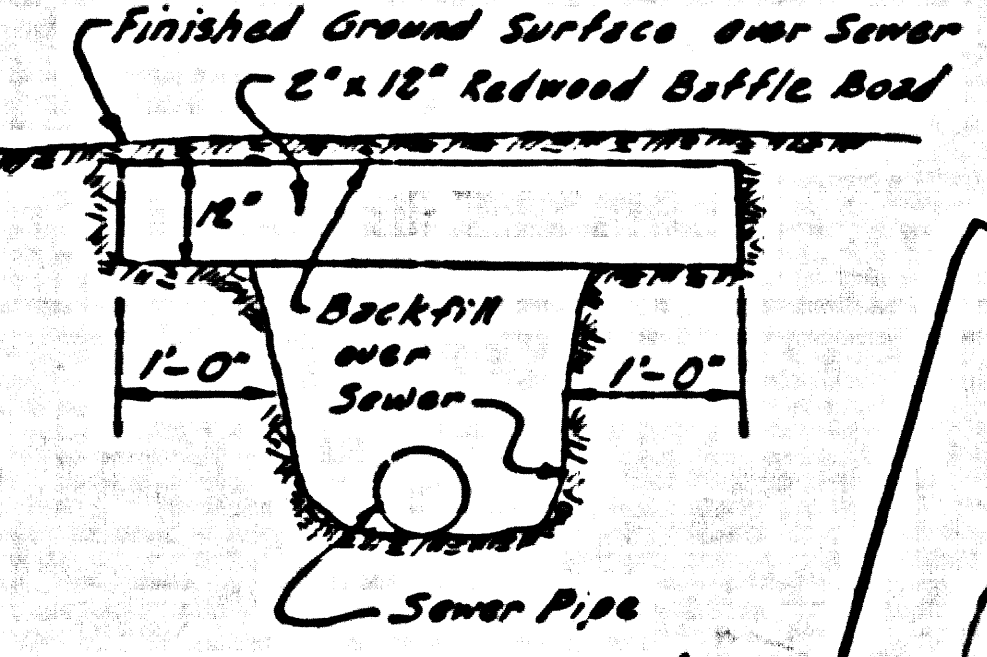


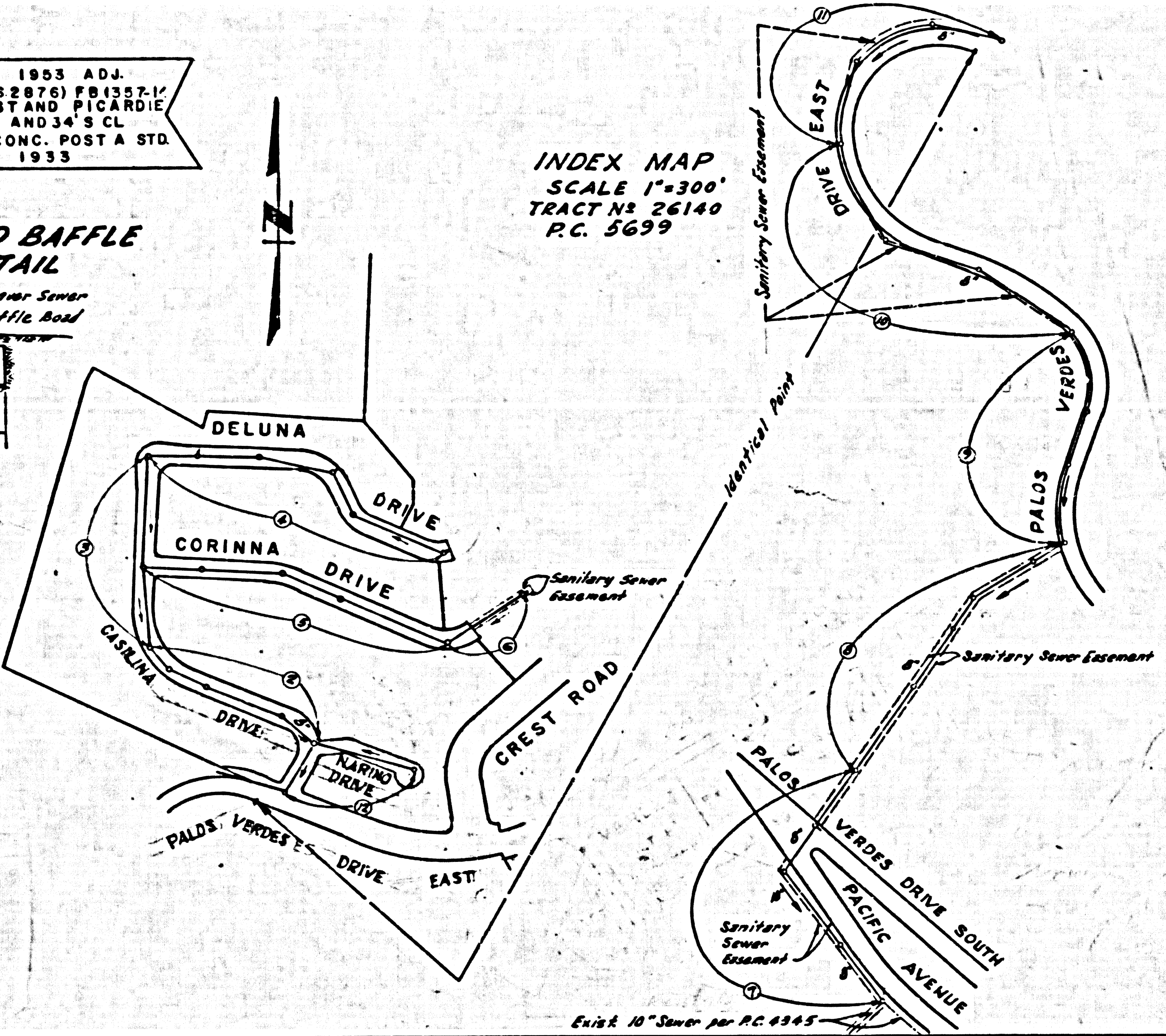
BM 36-8 EL: 769.743 1953 ADJ.
 (U.S.C. & G.S. 88-166) (US 2876) FB 1357-17
 PALOS VERDES DRIVE EAST AND PICARDIE
 35' E. OF CL OF SAID DRIVE AND 34' S CL
 PICARDIE RD SET IN A CONC. POST A STD.
 DISK STAMPED "N 168" 1933

2"x12" REDWOOD BAFFLE BOARD DETAIL



- Each end of baffle board will extend one foot into undisturbed ground.
- Baffles will be so spaced that the top of the lower baffle shall be level with the bottom of the upper baffle board.
- The upper layer of baffle will be so spaced that the top of the lower baffle shall be level with the bottom of the upper baffle board.

INDEX MAP
 SCALE 1"=300'
 TRACT No 26140
 P.C. 5699



DOUBLE SCALE
LOMITA BLDG. DIST. NO. 7.1

PROFILE ALIGNMENT AND GRADE OF P.C. 5699
SANITARY SEWERS PAGE 1
 TO BE CONSTRUCTED IN
 TRACT No 26140

PRIVATE CONTRACT NO. 5699

W.S. 27
 6 SHEETS, 12 PAGES

SCALE: VERT. 1"=4' HORIZ. 1"=40'

PREPARED IN THE OFFICES OF
DEVELOPMENT CONSULTANTS INC.
 1025 E. GREEN STREET PASADENA CALIF.
 REG. C.E. NO. 2333

FOR LEGEND SEE PLAN NO. S-A-64

- NOTES:
- PROVIDE STAKES ON THE PROPERTY LINE OR PROPERTY LINES PRODUCED AT RIGHT ANGLES TO THE SEWER LINE AT THE CENTER LINE OF EACH MANHOLE.
 - NO REPRESENTATIVE OF THE COUNTY ENGINEER WILL SURVEY OR LAY OUT ANY PORTION OF THE WORK.
 - THE OWNER OR HIS AUTHORIZED REPRESENTATIVE SHALL FURNISH THE COUNTY ENGINEER WITH GRADE SHEETS AND STATIONING FOR ALL HOUSE LATERALS AND Y BRANCHES AND SHALL PROVIDE STAKES FOR THESE AT THEIR PROPER LOCATIONS WITH STATIONING PLAINLY MARKED. ANY CHANGE IN LOCATION SHALL BE REQUESTED IN WRITING BY THE OWNER OR HIS REPRESENTATIVE.
 - THE PRIVATE ENGINEER SHALL FURNISH THE HOUSE LATERAL 8" P.V.C. AT THE PROPERTY LINE BELOW THE TOP OF CURB ELEVATION FOR EACH HOUSE LATERAL ON THE CURB LINE.
 - NO REVISIONS SHALL BE MADE IN THESE PLANS WITHOUT THE APPROVAL OF THE COUNTY ENGINEER.
 - USE STANDARD MANHOLE FRAMES AND COVERS, S-117, EXCEPT AS NOTED.
 - USE STANDARD STRENGTH PIPE EXCEPT AS NOTED.
 - USE CEMENT MORTAR OR "VERDE-LOCK" OR "SPEED-SEAL" FOR ALL V.C.P. JOINTS PER SPEC., SECS. 20 & 48.
 - RESURFACE ALL TRENCH WITHIN PAVED AREA TO MEET L.A. COUNTY ROAD DEPT. OR CALIF. STATE HIGHWAY REQUIREMENTS IN ACCORDANCE WITH PERMITS.
 - ENCASE FOUR FEET OF SEWER AT POINTS OF INTERFERENCE WITH POLES, CASE III, S-2-172.
 - HOUSE LATERALS TO BE CONSTRUCTED WITH INVERTS AT PROPERTY LINE 5 FEET BELOW CURB GRADE.
 - ALL STRUCTURES SHALL BE BRICK SEWER STRUCTURES, S-114, EXCEPT AS NOTED.
 - FOR ALLOWABLE LEAKAGE TEST USE FORMULA NO. 1, SPEC., SEC. 54.
 - MANHOLE TOPS IN UNIMPROVED RIGHTS-OF-WAY TO BE SIX INCHES ABOVE FINISHED GRADE.
 - THE CONTRACTOR SHALL NOTIFY THE CONSTRUCTION & STORM DRAIN DIVISION BY TELEPHONE, MADISON 9-87, EXT. 8151 AT LEAST TWENTY-FOUR HOURS BEFORE STARTING ANY WORK UNDER THIS CONTRACT.
 - STANDARD SPECIFICATIONS DATED OCTOBER, 1958 APPLY IN THE CONSTRUCTION OF THIS PROJECT.
 - ALL HOUSE LATERALS OR MAIN LINE SEWERS CARRYING STORM DRAINS NOT OTHERWISE ENCASED SHALL BE ENCASED PER S-2-172, CASE II.
 - NO CONSTRUCTION SHALL BE PERMITTED IN FILLED AREA UNLESS ACCEPTABLE CERTIFICATION IS SUBMITTED TO THE CONSTRUCTION DIVISION OF THE COUNTY ENGINEER'S DEPARTMENT THAT RELATIVE COMPACTION IS GREATER THAN 80%.
 - IF COMPACTION IS LESS THAN 80% THE SEWER MUST BE CRADLED.
 - AS SHOWN ON THE PLANS PER S-2-164.
 - IF COMPACTION IS GREATER THAN 80% CRADLING AND SPECIAL M.H. BASES ARE NOT REQUIRED, HOWEVER JOINTS COMPOUNDED MUST BE SUBSTITUTED FOR CEMENT MORTAR IN ALL JOINTS IN FILLED AREAS.

REVISION:
 Page No. revised.
 Change Sewer from existing centerline into
 as shown on plan lines from East to
 West as shown on pages 7-12.
 Approved: *B. J. Tolson* 4-13-61
 Reg. C.E. No. 11636

NO CHARGE
FOR CONNECTIONS
L. Curtis 4-10-61

NO CONNECTIONS FOR THE DISPOSAL OF INDUSTRIAL WASTES SHALL BE MADE TO SEWERS SHOWN ON THESE DRAWINGS WITHOUT WRITTEN PERMISSION FROM THE CHIEF ENGINEER AND GENERAL MANAGER OF THE COUNTY SANITATION DISTRICTS.

COUNTY OF LOS ANGELES, CALIFORNIA

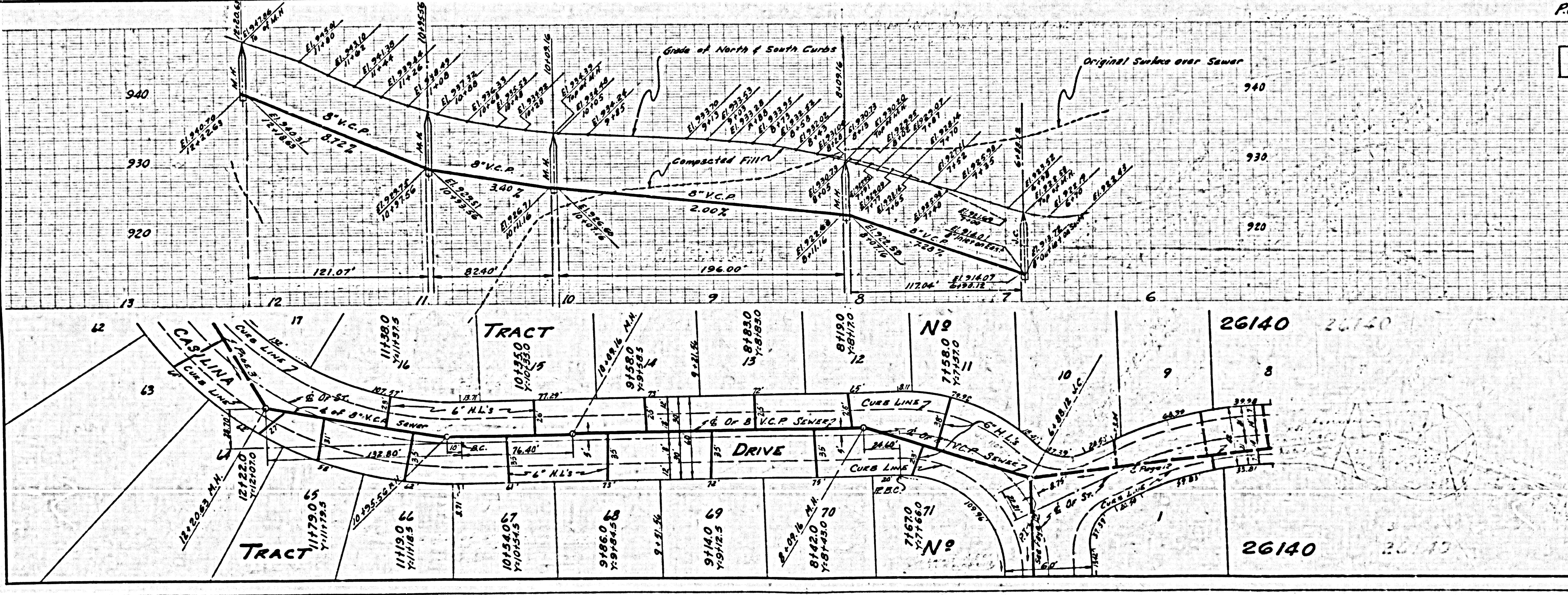
APPROVED, JOHN A. LAMBE, COUNTY ENGINEER
 APPROVED, C.E. Campbell, CHIEF ENGINEER
 CO. SAN. DIST. NO. 5

BY *C. S. Hughes* SANITATION ENGINEER
 BY *A. Robertson* OFFICE ENGINEER 4-13-61

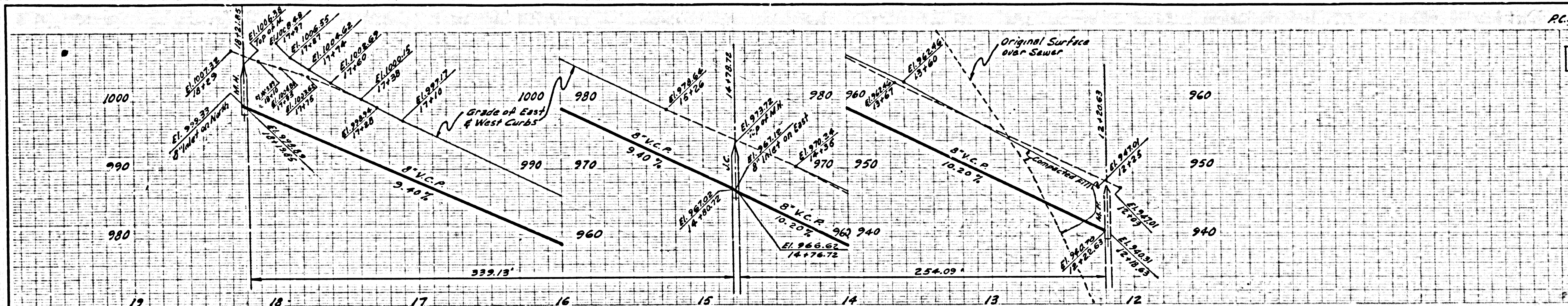
CHECKED BY *B. J. Tolson* 12-29-60
 OFFICE OF COUNTY ENGINEER, REG. C.E. NO. 11636

SUBMITTED BY: *Sack Consulting*
 PALOS VERDES-CENTINELA VALLEY REGIONAL ENGINEER

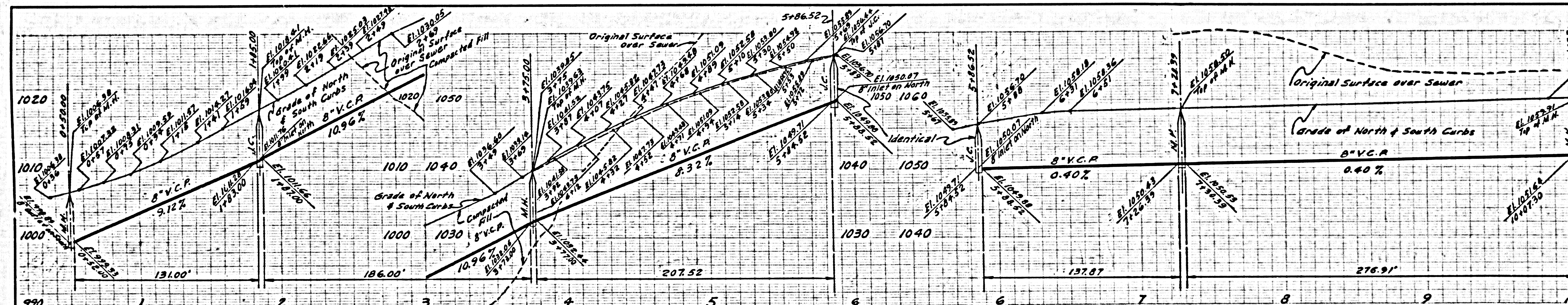
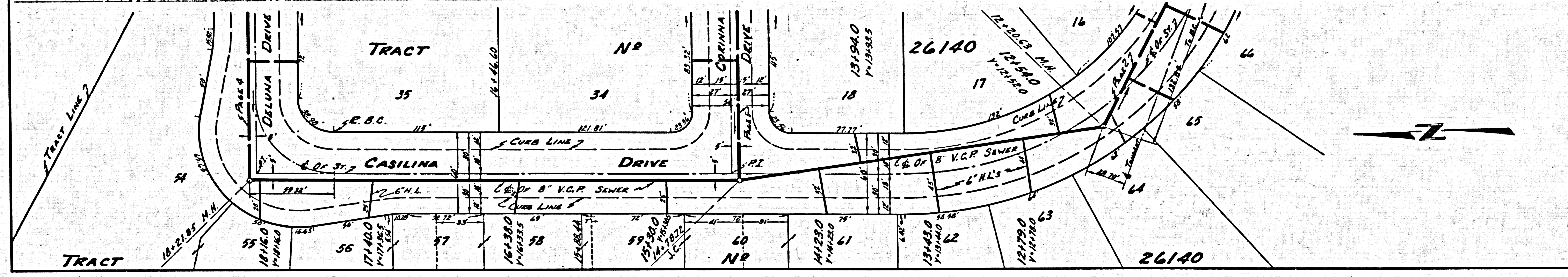
P.C. 5699 PAGE 2
DOUBLE SCALE
NO CHARGE FOR CONNECTIONS



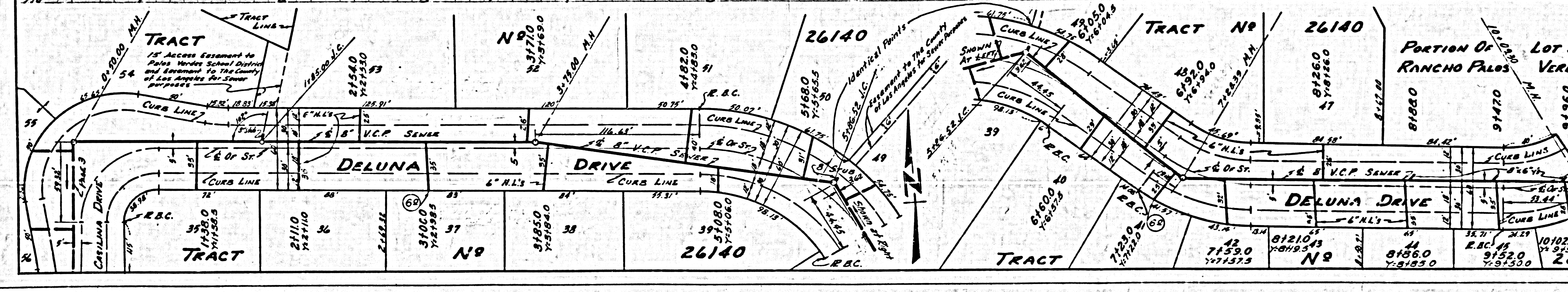
30672



30598

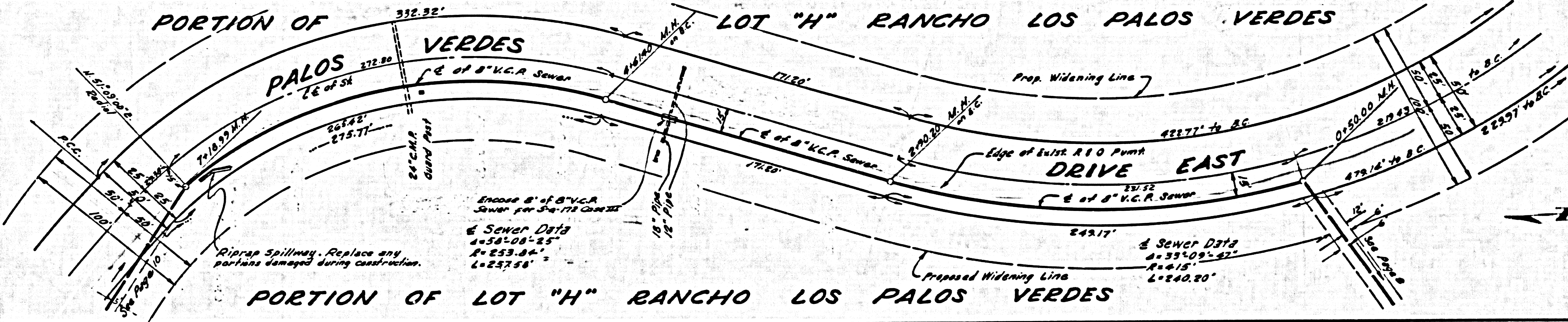
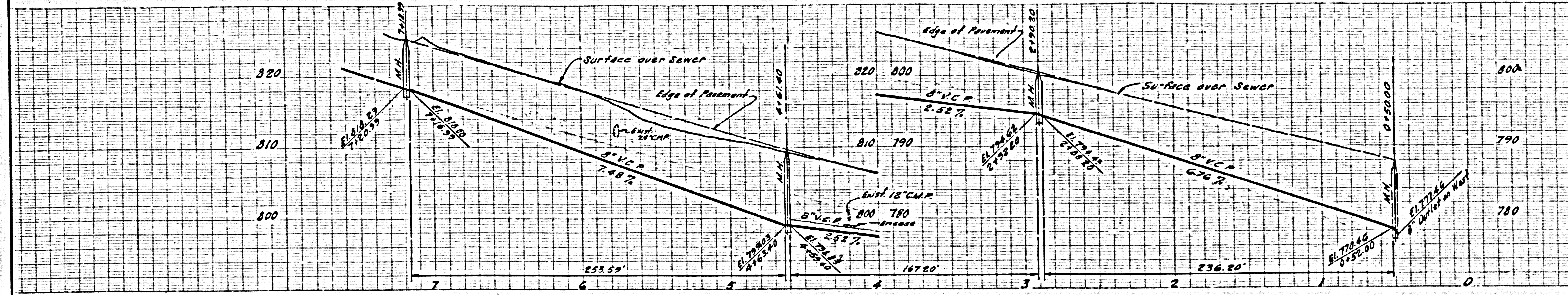


30599



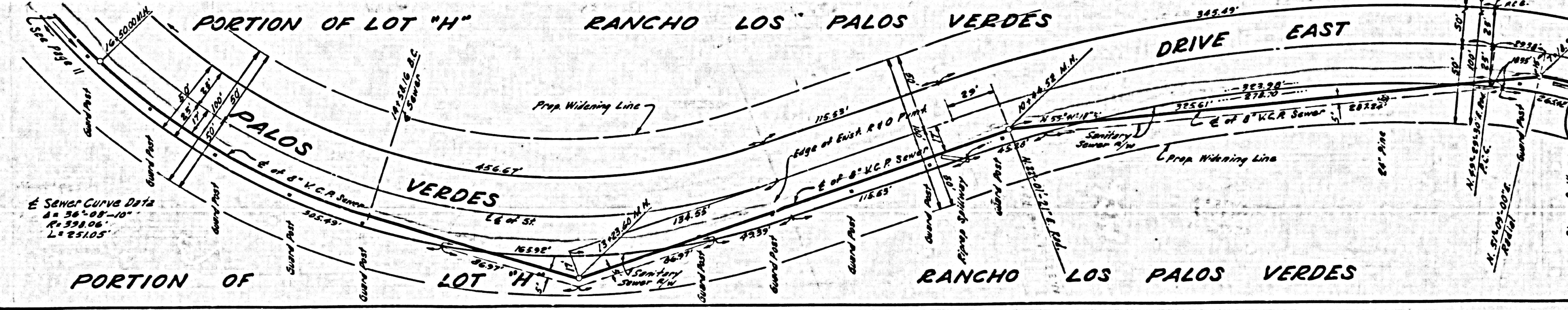
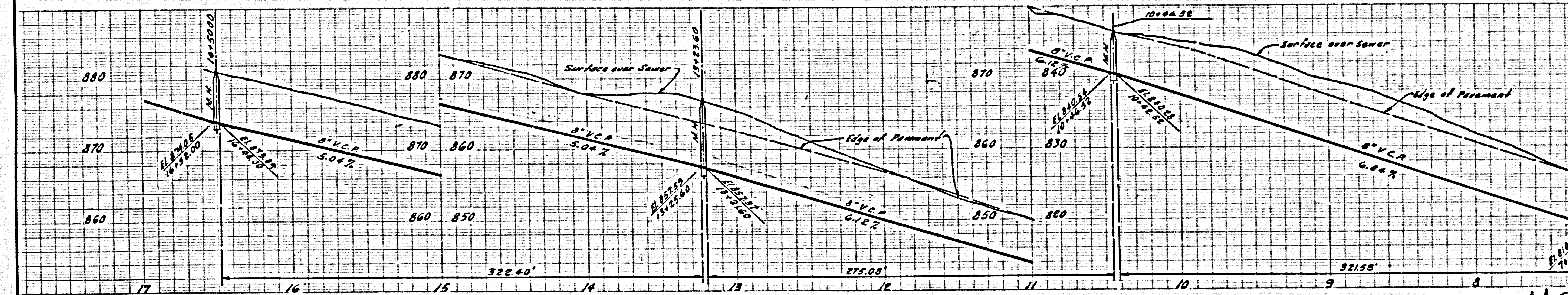
DOUBLE SCALE
NO CHARGE FOR
CONNECTIONS

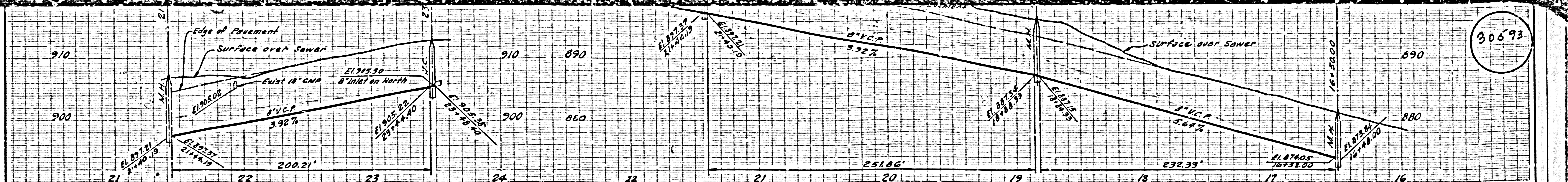
30611



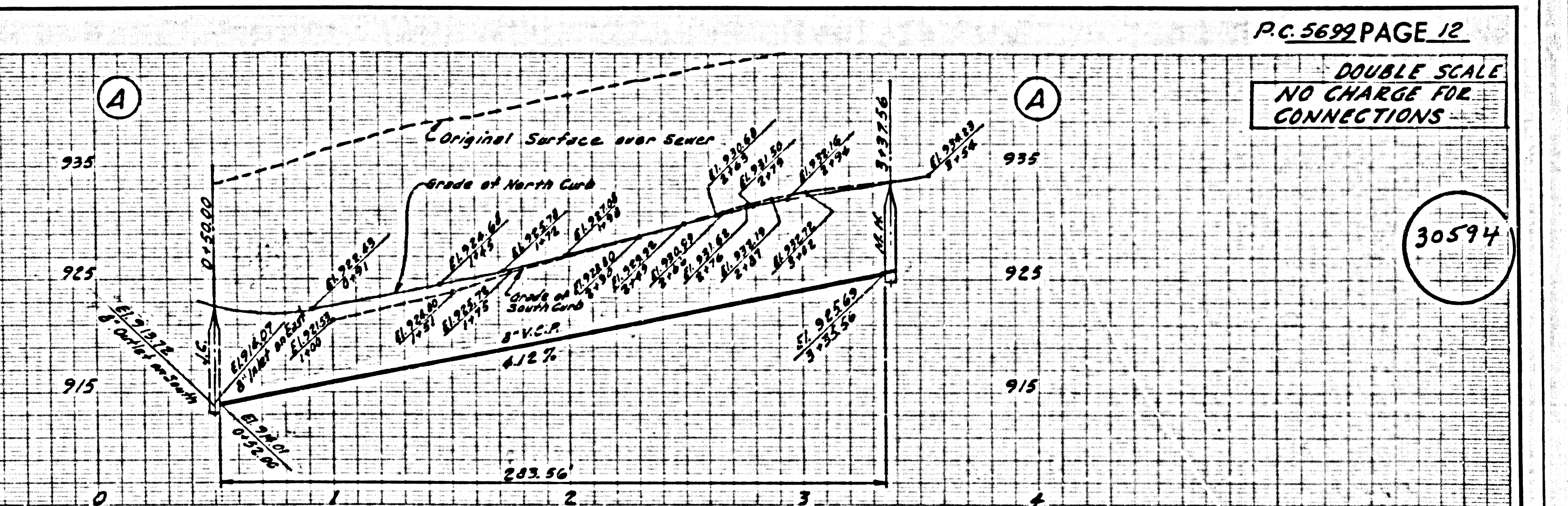
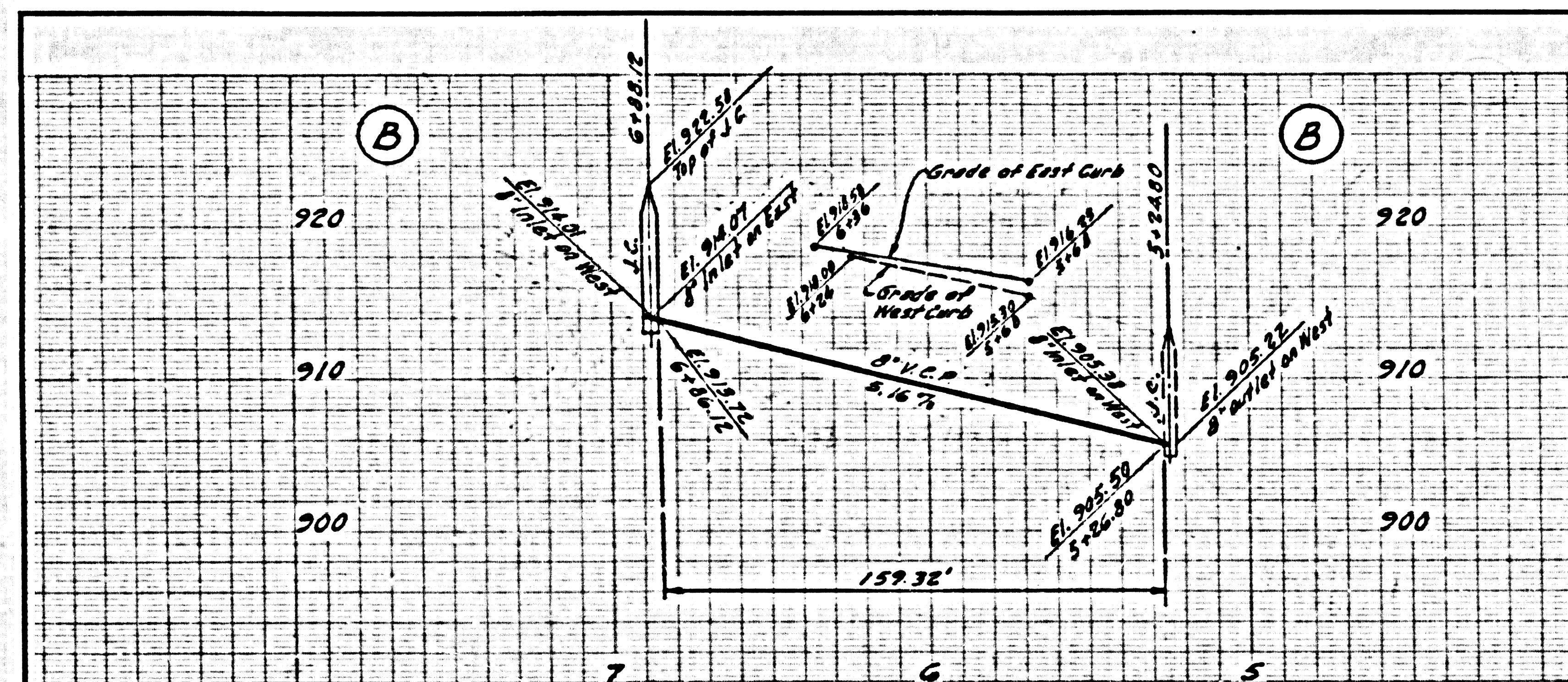
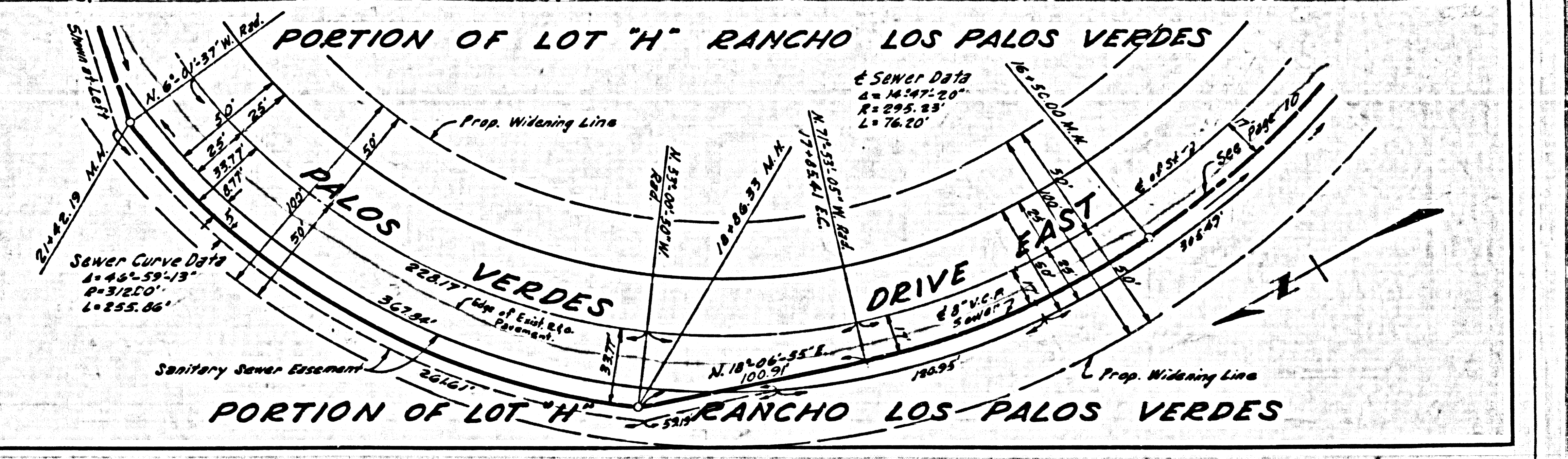
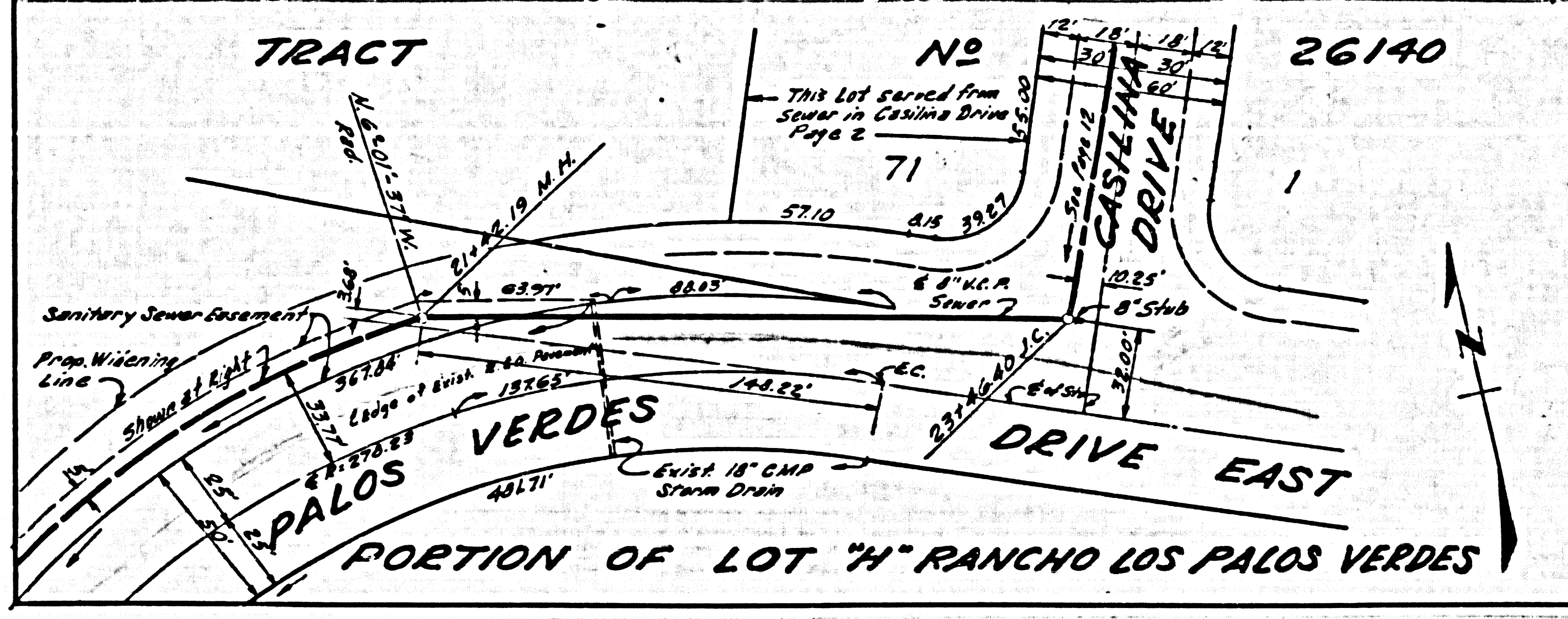
DOUBLE SCALE
NO CHARGE FOR
CONNECTIONS

30612





30693



P.C. 5699 PAGE 12
DOUBLE SCALE
NO CHARGE FOR
CONNECTIONS

30594

