

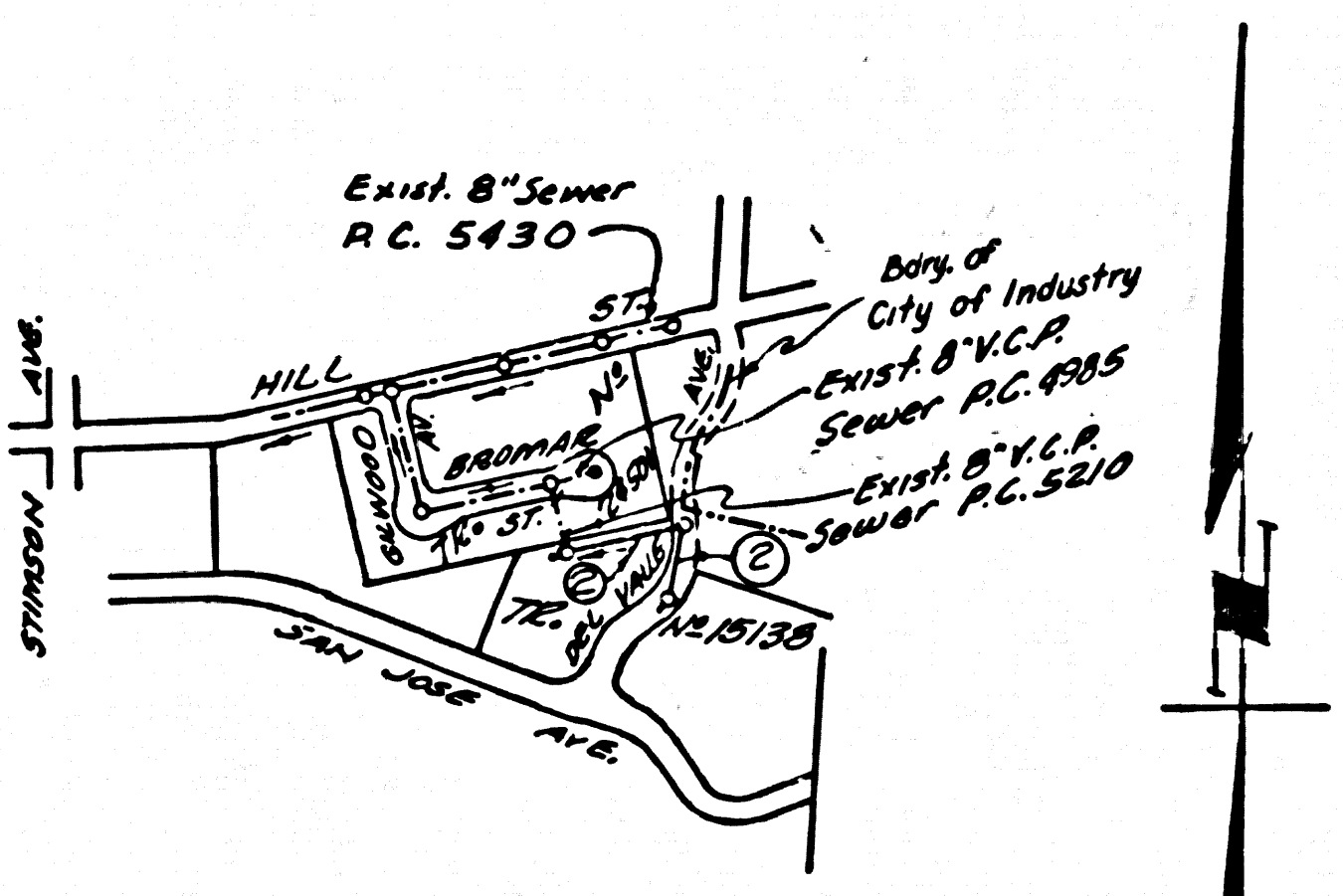
DOUBLE SCALE
LA PUENTE BLDG. DIST. NO. 2.02

PROFILE ALIGNMENT AND GRADE OF P.C. 5708
SANITARY SEWERS PAGE 1
TO BE CONSTRUCTED IN
DEL VALLE STREET
& SANITARY SEWER R/W
PRIVATE CONTRACT NO. 5708

- NOTES:
1. PROVIDE STAKES ON THE PROPERTY LINE OR PROPERTY LINES PRODUCED AT RIGHT ANGLES TO THE SEWER LINE AT THE CENTER LINE OF EACH MANHOLE.
 2. NO REPRESENTATIVE OF THE CITY ENGINEER WILL SURVEY OR LAY OUT ANY PORTION OF THE WORK.
 3. THE OWNER OR HIS AUTHORIZED REPRESENTATIVE SHALL FURNISH THE CITY ENGINEER WITH GRADE SHEETS AND STATIONING FOR ALL HOUSE LATERALS AND Y BRANCHES AND SHALL PROVIDE STAKES FOR THEM AT THEIR PROPER LOCATIONS WITH STATIONING PLAINLY MARKED. ANY CHANGE IN LOCATION SHALL BE REQUESTED IN WRITING BY THE OWNER OR HIS REPRESENTATIVE.
 4. ~~USE STANDARD STRENGTH PIPE 8" DIA. 10' L.~~
 5. NO REVISIONS SHALL BE MADE IN THESE PLANS WITHOUT THE APPROVAL OF THE CITY ENGINEER.
 6. USE STANDARD MANHOLE FRAMES AND COVERS, 5-117.
 7. USE STANDARD STRENGTH PIPE 8" DIA. 10' L.
 8. USE CEMENT MORTAR OR "WEDGE-LOCK" OR "SPEED-SEAL" FOR ALL V.C.P. JOINTS PER SPECS., SECS. 34 & 41.
 9. RESURFACE ALL TRENCH WITHIN PAVED AREA TO MEET L.A. COUNTY ROAD DEPT. OR CALIF. STATE HIGHWAY REQUIREMENTS IN ACCORDANCE WITH PERMITS.
 10. ENCASE FOUR FEET OF SEWER AT POINTS OF INTERFERENCE WITH POLES, CASE III, 5-172.
 11. ~~USE STANDARD STRENGTH PIPE 8" DIA. 10' L.~~
 12. ALL STRUCTURES SHALL BE BRICK SEWER STRUCTURES, 5-104.
 13. FOR ALLOWABLE LEAKAGE TEST USE FORMULA NO. 100, SPECS., SEC. 34.
 14. MANHOLE TOPS IN UNIMPROVED RIGHTS-OF-WAY TO BE SIX INCHES ABOVE FINISHED GRADE.
 15. THE CONTRACTOR SHALL NOTIFY THE CONSTRUCTION DIVISION BY TELEPHONE, MADISON 5-4141, EXT. 8394 AT LEAST TWENTY FOUR HOURS BEFORE STARTING ANY WORK UNDER THIS CONTRACT.
 16. STANDARD SPECIFICATIONS DATED OCT. 19, 1960 SHALL BE USED IN THE CONSTRUCTION OF THIS PROJECT.

W.S. 38
1 SHEET : 2 PAGES
SCALE: VERT. 1"=6'
HORIZ. 1"=40'
SEPT., 1960
PREPARED IN THE OFFICES OF
HANS G. THOMSEN
BY: Hans G. Thomsen
REG. C. E. NO. 8268
FOR LEGEND SEE PLAN NO. S-A-64

30473



INDEX MAP
P.C. 5708 SCALE 1"=600'

B.M. S.G. 1031 L.A. Co. Surv. Mon.
Intersection of Glendora Ave.
& Hill St. to E. Edge of Brass
cop. Base Line 1955 ELEV. 353.710
PUENTE QUAD

NO CHARGE FOR
CONNECTIONS
SK Ouida 12-12-60

ISSUE NO PERMITS
UNTIL P.C. 5210 IS
CONSTRUCTED

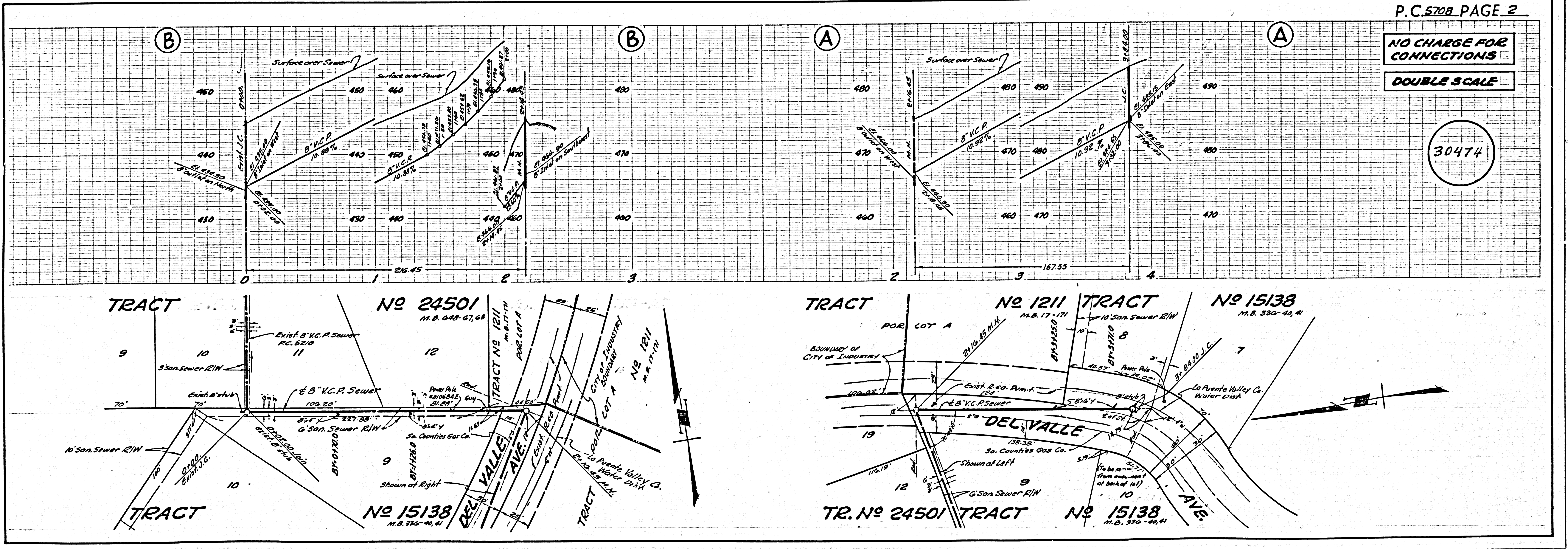
Revision 2: Reduce J.C. from Sta.
3+28.75 to Sta. 3+28.00
Approved:
W.C. Reinhardt 4-18-61

NO CONNECTIONS FOR THE DISPOSAL OF
INDUSTRIAL WASTES SHALL BE MADE TO
SEWERS SHOWN ON THESE DRAWINGS
WITHOUT WRITTEN PERMISSION FROM THE
CHIEF ENGINEER AND GENERAL MANAGER
OF THE COUNTY SANITATION DISTRICTS.

CITY OF LA PUENTE
APPROVED: [Signature]
CITY MANAGER

NOTE:
GRADES TO WHICH THIS IMPROVEMENT IS TO BE CONSTRUCTED ARE SHOWN ON PLANS AND PROFILES. GRADE POINTS FOR TOP OF CURBS, CENTER LINE OF STREETS OR CENTER LINE OF ALLEYS ARE SHOWN BY CIRCLES ON PROFILES. AT ALL POINTS BETWEEN DESIGNATED POINTS THE GRADE SHALL BE ESTABLISHED SO AS TO CONFORM TO A STRAIGHT LINE DRAWN BETWEEN SAID DESIGNATED POINTS.
ELEVATIONS ARE IN FEET ABOVE U.S.C. & G.S. SEA LEVEL DATUM OF 1929.
THIS DRAWING AND THE DATA HEREON ARE HEREBY MADE A PART OF THE SPECIFICATIONS.
WORK SHALL BE CONSTRUCTED ACCORDING TO SPECIFICATIONS ON FILE IN THE OFFICE OF THE CITY ENGINEER AND SHALL BE PROSECUTED ONLY IN THE PRESENCE OF THE CITY ENGINEER.
BEFORE WORK CAN BE STARTED, THE CONTRACTOR MUST OBTAIN A PERMIT TO EXCAVATE IN CITY STREETS FROM THE L.A. COUNTY ROAD DEPT., DISTRICT OFFICE NO. 1, AND PAY A FEE TO THE CITY OF LA PUENTE, 159 1/2 E. MAIN ST., LA PUENTE, CALIF. SUFFICIENT TO COVER THE COST OF CONSTRUCTION INSPECTION AND RECORD PLANS.
APPROVAL OF THIS PLAN BY THE CITY OF LA PUENTE DOES NOT CONSTITUTE A REPRESENTATION AS TO THE ACCURACY OF THE LOCATION OF OR THE EXISTENCE OR NON-EXISTENCE OF ANY UNDERGROUND UTILITY PIPE, OR STRUCTURE WITHIN THE LIMITS OF THIS PROJECT. THIS NOTE APPLIES TO ALL PAGES.
IF WORK IS TO BE DONE IN A STATE HIGHWAY, A PERMIT MUST BE OBTAINED FROM THE STATE OF CALIFORNIA, DIVISION OF HIGHWAYS, 120 SOUTH SPRING STREET.

CITY OF LA PUENTE, CALIFORNIA
APPROVED, JOHN A. LAMBIE, CITY ENGINEER APPROVED, C.E. COMPTON, CHIEF ENGINEER
CO. SAN. DIST. NO. 15
BY: [Signature] ASST. SANITATION ENGINEER BY: [Signature] OFFICE ENGINEER
CHECKED BY: [Signature] OFFICE OF CITY ENGINEER, REG. C. E. NO. 7406
SUBMITTED BY: W.C. Reinhardt, SAN DIMAS REGIONAL ENGINEER



P.C. 5708 PAGE 2

NO CHARGE FOR
CONNECTIONS
DOUBLE SCALE

30474