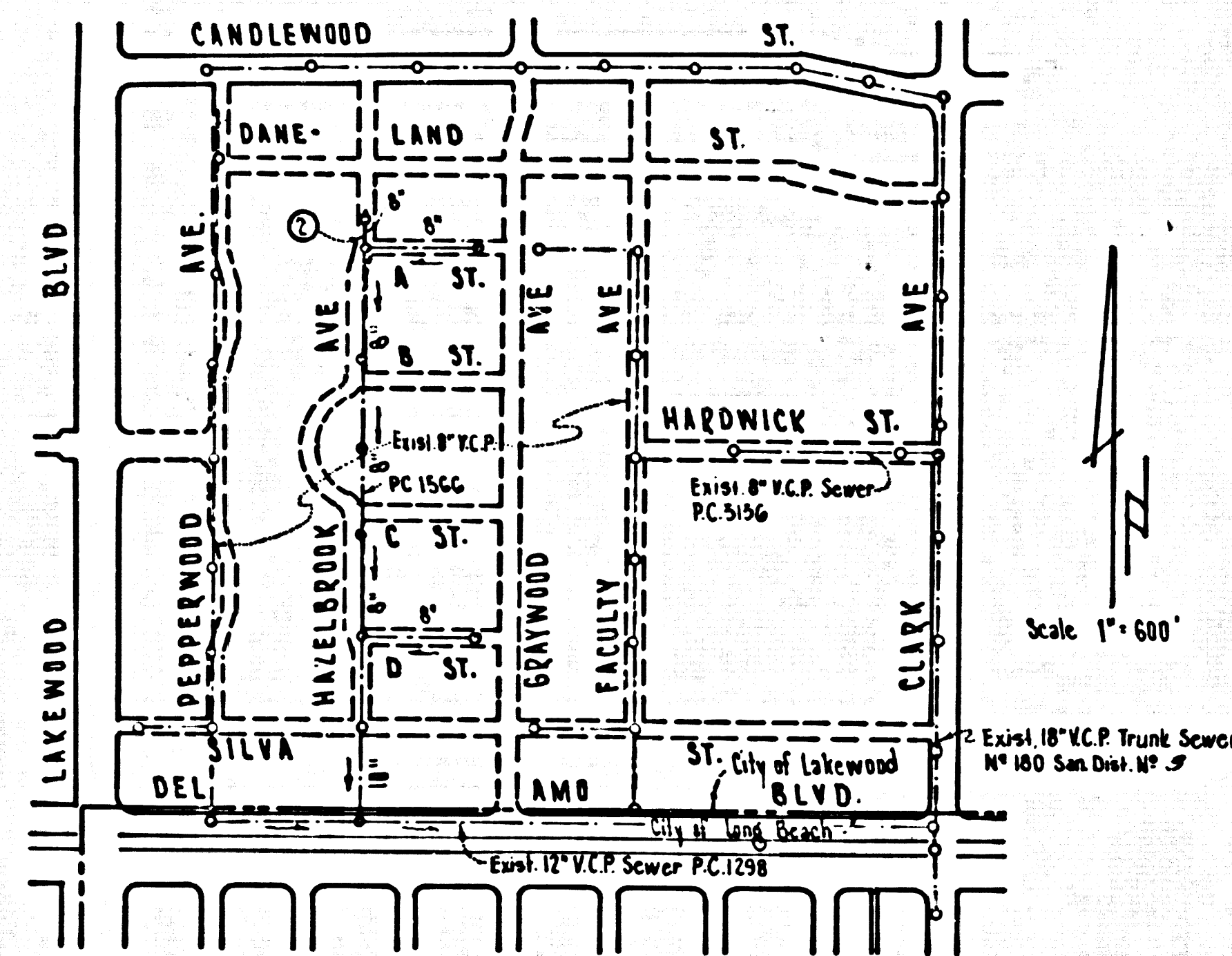


DOUBLE SCALE
LAKEWOOD BLDG. DIST. NO. 4.01

PROFILE ALIGNMENT AND GRADE OF P.C. 5712
SANITARY SEWERS PAGE 1
TO BE CONSTRUCTED IN
(HAZELBROOK AVENUE R/W)
between A Street & Daneland Street

B.M. - KN 151 Elev. 46.750
Per F.B. 1911 p. 66 Del Amo Blvd
Service Rd. Side of Blackthorne Ave
SW Corner W.N. end Curb Return
B.S. in Curb



INDEX MAP
P.C. 5712

- NOTES:
1. PROVIDE STAKES ON THE PROPERTY LINE OR PROPERTY LINES PRODUCED AT RIGHT ANGLES TO THE SEWER LINE AT THE CENTER LINE OF EACH MANHOLE.
 2. NO REPRESENTATIVE OF THE CITY ENGINEER WILL SURVEY OR LAY OUT ANY PORTION OF THE WORK.
 3. THE OWNER OR HIS AUTHORIZED REPRESENTATIVE SHALL FURNISH THE CITY ENGINEER WITH GRADE SHEETS AND STATIONING FOR ALL HOUSE LATERALS AND Y BRANCHES AND SHALL PROVIDE STAKES FOR THEM AT THEIR PROPER LOCATIONS WITH STATIONING PLAINLY MARKED. ANY CHANGE IN LOCATION SHALL BE REQUESTED IN WRITING BY THE OWNER OR HIS REPRESENTATIVE.
 4. THE PRIVATE ENGINEER SHALL FURNISH THE HOUSE LATERAL DEPTH AT THE PROPERTY LINE BELOW THE TOP OF CURB ELEVATION FOR EACH HOUSE LATERAL ON THE GRADE SHEET.
 5. NO REVISIONS SHALL BE MADE IN THESE PLANS WITHOUT THE APPROVAL OF THE CITY ENGINEER.
 6. USE STANDARD MANHOLE FRAMES AND COVERS, S-1174
 7. USE STANDARD STRENGTH PIPE EXCEPT AS NOTED.
 8. USE CEMENT MORTAR OR "WEDGE-LOCK" OR "SPREAD-SEAL" FOR ALL V.C.P. JOINTS PER SPEC'S, SECS. 24 & 48.
 9. RESURFACE ALL TRENCH WITHIN PAVED AREA TO MEET L.A. COUNTY ROAD DEPT. OR CALIF. STATE HIGHWAY REQUIREMENTS IN ACCORDANCE WITH PERMITS.
 10. ENCASE FOUR FEET OF SEWER AT POINTS OF INTERFERENCE WITH POLES, CASE III, S-172.
 11. HOUSE LATERALS TO BE CONSTRUCTED WITH INVERTS AT PROPOSED LINE FEET BELOW GRADE OF 4" OF STREET.
 12. ALL STRUCTURES SHALL BE BRICK SEWER STRUCTURES, S-104.
 13. FOR ALLOWABLE LEAKAGE TEST USE FORMULA NO. 1, SPEC'S, SEC. 54.
 14. MANHOLE TOPS IN UNIMPROVED RIGHTS-OF-WAY TO BE SIX INCHES ABOVE FINISHED GRADE.
 15. THE CONTRACTOR SHALL NOTIFY THE CONSTRUCTION DIVISION BY TELEPHONE, MADISON 9-4747, EXT. 551 AT LEAST TWENTY-FOUR HOURS BEFORE STARTING ANY WORK UNDER THIS CONTRACT.
 16. STANDARD SPECIFICATIONS DATED OCTOBER 10, 1960, ON FILE IN CITY HALL, APPLY IN THE CONSTRUCTION OF THIS PROJECT.

PRIVATE CONTRACT NO. 5712

W.S. 31
SHEET 1 PAGES
SCALE: VERT. 1"=8'
HORIZ. 1"=40' OCTOBER 1960
PREPARED IN THE OFFICES OF
VIC CASE
1234 E. BUTTELE ST.
Long Beach, California
By: J. M. ... REG. C. E. NO. 9615

29,900

FOR LEGEND SEE PLAN NO. S-A-64

NOTE:
GRADES TO WHICH THIS IMPROVEMENT IS TO BE CONSTRUCTED ARE SHOWN ON PLANS AND PROFILES. GRADE POINTS FOR TOP OF CURB, CENTER LINE OF STREETS, OR CENTER LINE OF ALLEYS ARE SHOWN BY CIRCLES ON PROFILES AT ALL POINTS BETWEEN DESIGNATED POINTS THE GRADE SHALL BE ESTABLISHED SO AS TO CONFORM TO A STRAIGHT LINE DRAWN BETWEEN SAID DESIGNATED POINTS.
ELEVATIONS ARE IN FEET ABOVE U.S.C. & G.S. SEA LEVEL DATUM OF 1929.
THIS DRAWING AND THE DATA HEREON ARE HEREBY MADE A PART OF THE SPECIFICATIONS.
WORK SHALL BE CONSTRUCTED ACCORDING TO SPECIFICATIONS ON FILE IN THE OFFICE OF THE CITY ENGINEER AND SHALL BE PROSECUTED ONLY IN THE PRESENCE OF THE COUNTY ENGINEER.
BEFORE WORK CAN BE STARTED, THE CONTRACTOR MUST OBTAIN A PERMIT TO EXCAVATE IN CITY STREETS FROM THE L.A. COUNTY ROAD DEPT., DISTRICT OFFICE NO. 4 AND MAKE A DEPOSIT WITH THE CITY OF LAKEWOOD, 5450 SOUTH CLARK STREET SUFFICIENT TO COVER THE COST OF CONSTRUCTION INSPECTION AND RECORD PLANS.
APPROVAL OF THIS PLAN BY THE CITY OF LAKEWOOD DOES NOT CONSTITUTE A REPRESENTATION AS TO THE ACCURACY OF THE LOCATION OR OF THE EXISTENCE OR NON-EXISTENCE OF ANY UNDERGROUND UTILITY PIPE, OR STRUCTURE WITHIN THE LIMITS OF THIS PROJECT. THIS NOTE APPLIES TO ALL PAGES.
IF WORK IS TO BE DONE IN A STATE HIGHWAY, A PERMIT MUST BE OBTAINED FROM THE STATE OF CALIFORNIA, DIVISION OF HIGHWAYS, 120 SOUTH SPRING STREET.

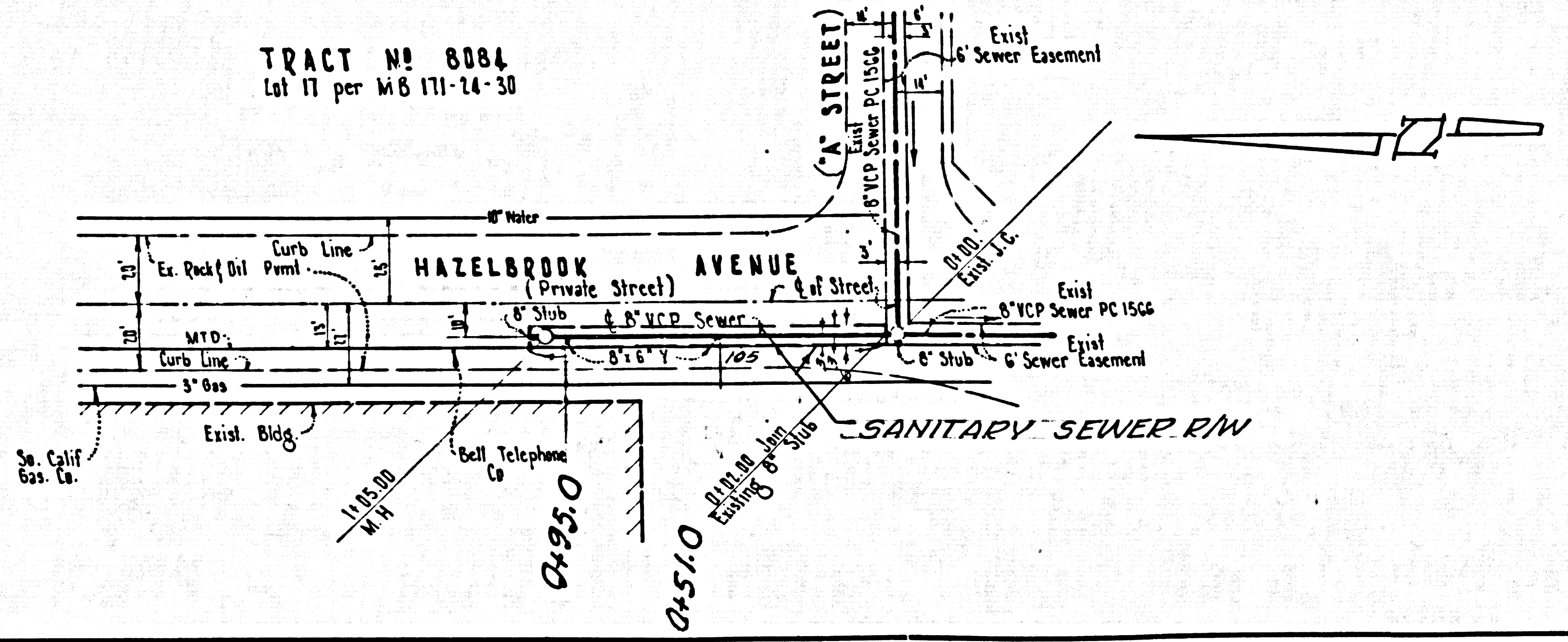
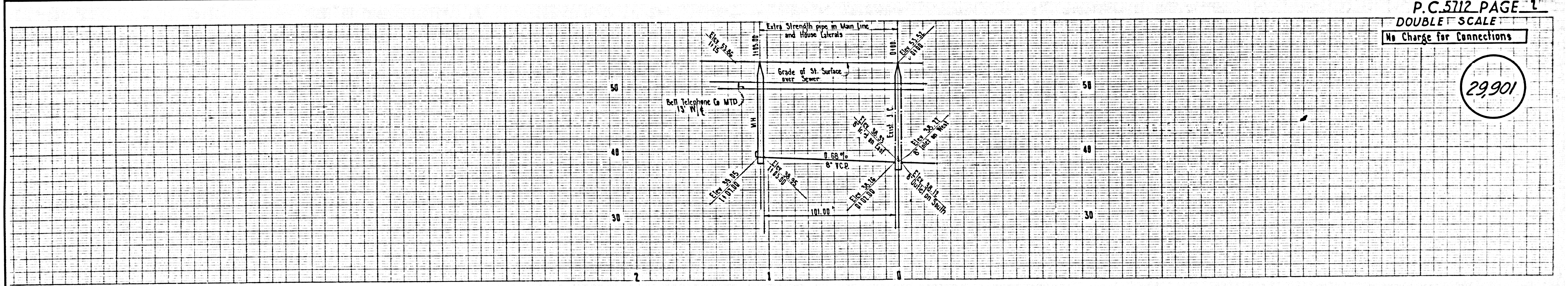
CITY OF LAKEWOOD, CALIFORNIA
APPROVED, JOHN A. LAMBIE, CITY ENGINEER APPROVED, C. R. COMPTON, CHIEF ENGINEER
BY: C. E. ... ASS'T. SANITATION ENGINEER J. ... OFFICE ENGINEER
CHECKED BY: ... 10-26-60
OFFICE OF CITY ENGINEER, REG. C. E. NO. 2406
SUBMITTED BY: John S. ... 10-26-60
LOS GERRITOS REGIONAL ENGINEER, REG. C. E. NO. 3011

NO CHARGE FOR CONNECTIONS
C. E. ... 10-26-60

P.C. 5712 PAGE 1
DOUBLE SCALE

No Charge for Connections

29,901



TRACT NO 8084
Lot 17 per M 6 171-14-30