

INDEX MAP
POMONA FREEWAY SEWERS
P.C. 5716
 W.S.: 7, E-2 Renié: 47, H-5

-LEGEND-
 Sewers to be abandoned:
 Sewers to be constructed:
 Existing sewers:
 Sheet numbers: S-1

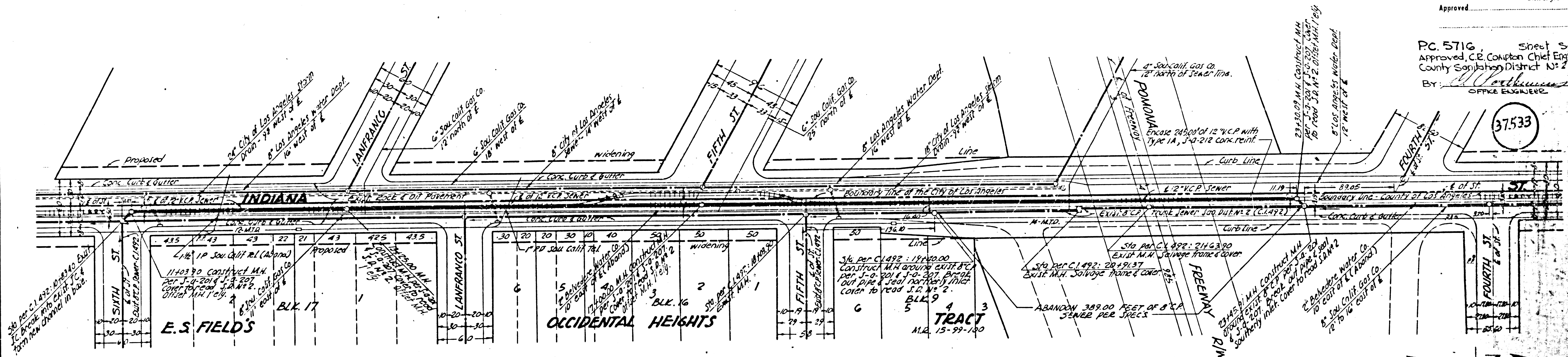
WM 8/62

DATE	REVISION	APPROVED
11-21-62	Realigned Main Line	S.K. Under

DIST.	COUNTY	ROUTE	SEC.	SHEET NO.	TOTAL SHEETS
VII	LA	172	A		

Approved: _____
 Dist. Eng. Dist. _____
 PC 5716, Sheet S-1
 Approved, C.R. Conpton, Chief Engineer
 County Sanitation District No. 2
 By: *[Signature]*
 OFFICE ENGINEER

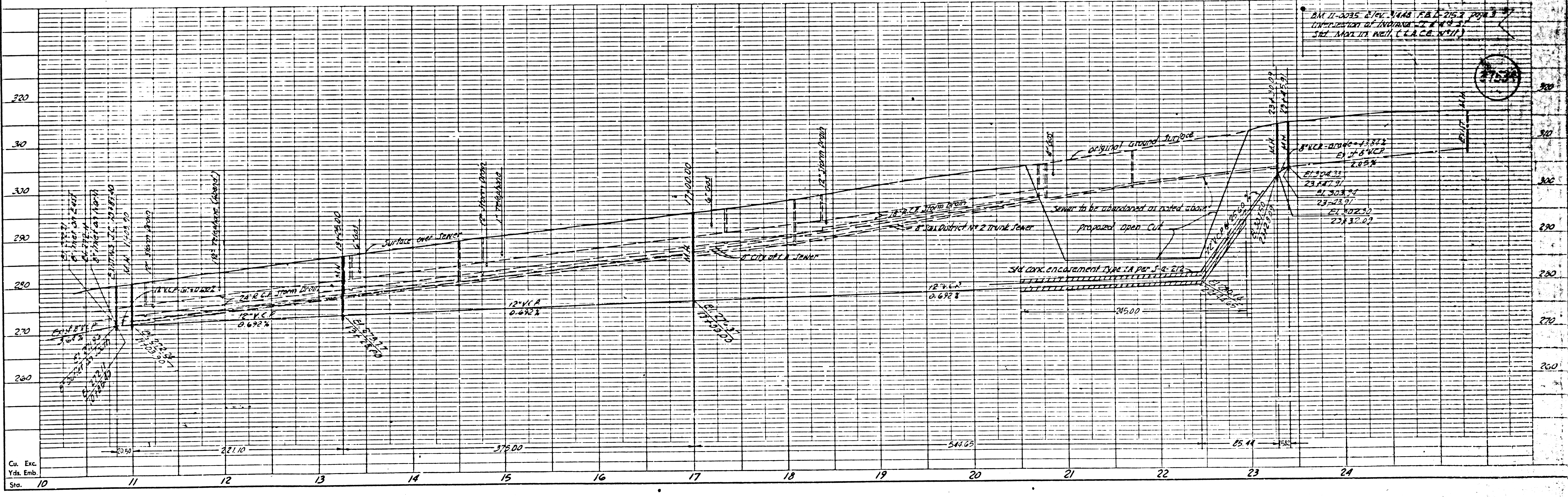
37533



- NOTES:
1. The Contractor shall deliver salvaged M.H. frames and covers to the County Sanitation Districts Field Office, 983 Petrolia St., Compton.
 2. The Contractor shall maintain sewer service of all times during construction.
 3. The contractor shall notify Mr. Bob Panell of the County Sanitation Districts by telephone, Nevada 6-3697, at least 48 hours before starting any sewer work on this sheet.

Scale
 Horiz. 1"=50'
 Vert. 1"=10'

Designed: Esquer, G.
 Checked: L. Eklund



Approved: _____ Dist. Eng. Dist. _____

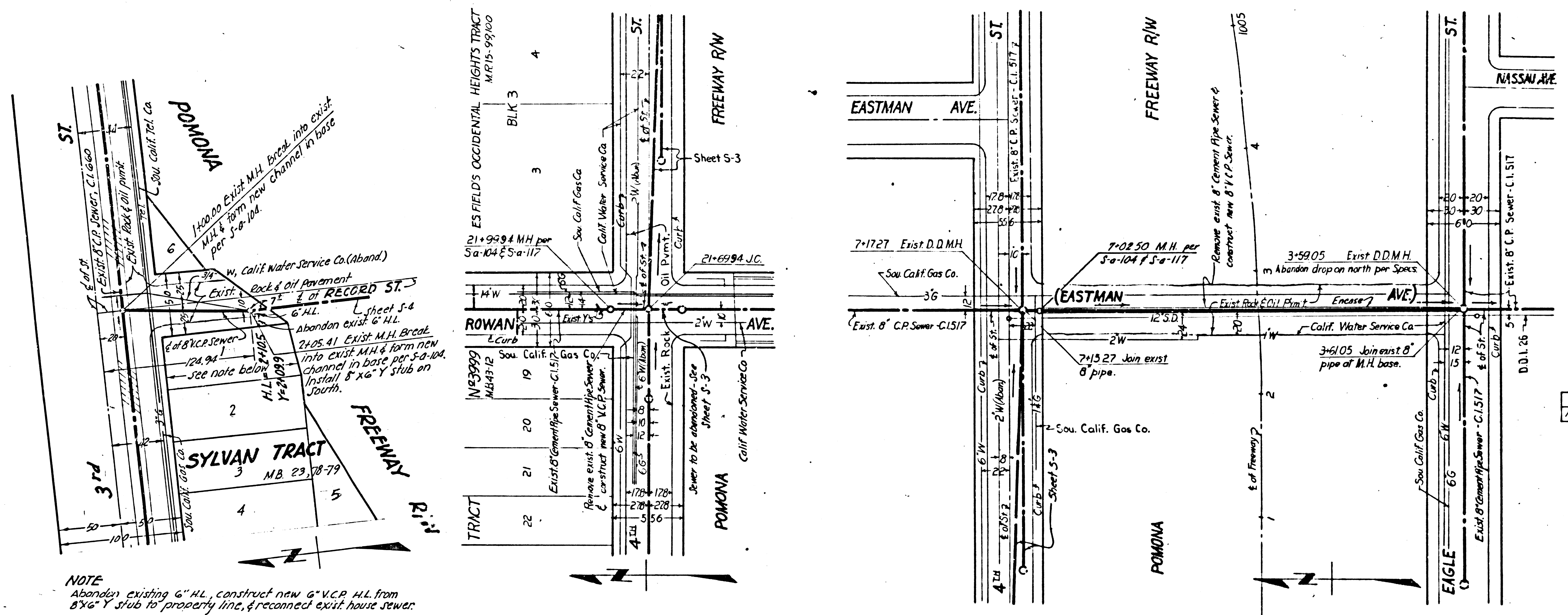
37535

PLAN & PROFILE OF
SANITARY SEWERS
 TO BE RECONSTRUCTED UNDER
PRIVATE CONTRACT No 5716
 SHEET S-2 W.S.7 JUNE, 1961
 SCALES: Horiz: 1"=50'; Vert: 1"=5'
COUNTY OF LOS ANGELES, CALIFORNIA
 APPROVED, JOHN A. LAMBIE, COUNTY ENGINEER
 BY *Richard S. Selzer* ASST. SANITATION ENGINEER
 APPROVED, J. D. PARKHURST, CHIEF ENGINEER
 COUNTY SANITATION DISTRICT No 2
 BY *H. J. [Signature]* OFFICE ENGINEER

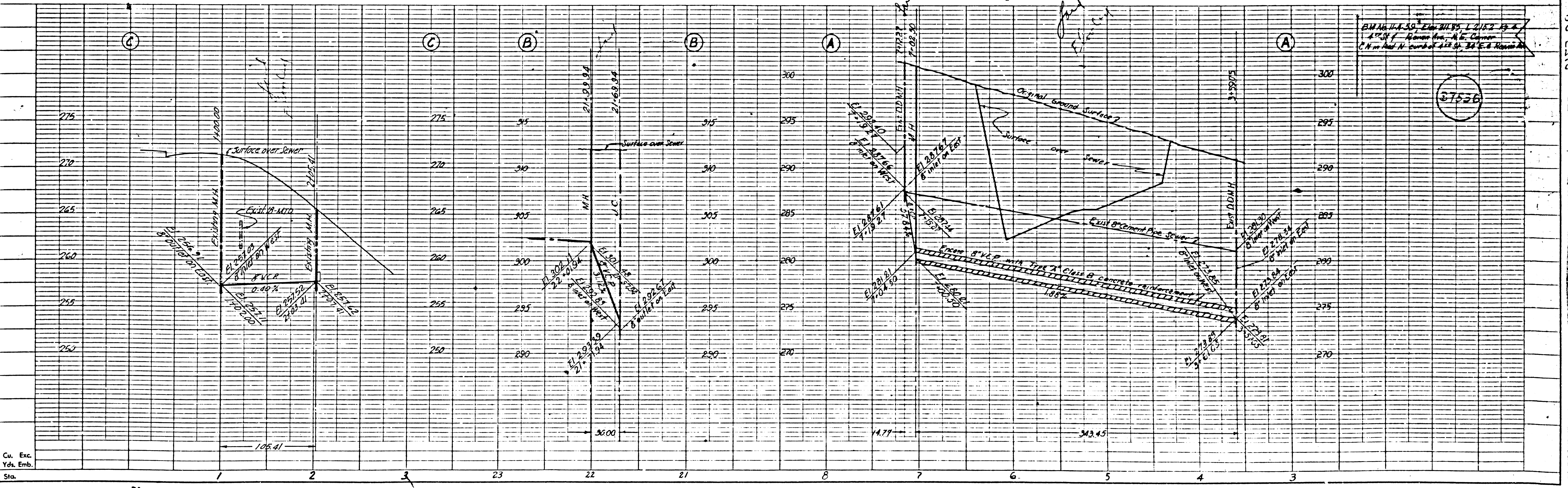
DATE	REVISION	APPROVED
12-23-63	Added M.L. Sewer in Record Street.	B. V. [Signature]

NO CONNECTIONS FOR THE DISPOSAL OF INDUSTRIAL WASTES SHALL BE MADE TO SEWERS SHOWN ON THESE DRAWINGS WITHOUT WRITTEN PERMISSION FROM THE CHIEF ENGINEER AND GENERAL MANAGER OF THE COUNTY SANITATION DISTRICTS.

Designed: R. Steiner?
 Checked: N. Wong



NOTE
 Abandon existing 6" H.L., construct new 6" V.C.P. H.L. from 8'x6" Y stub to property line, & reconnect exist. house sewer.



BM No. 114-39, Elev. 211.95, L. 2152.49
 A.C.S. of Rowan Ave., N.E. Corner
 C.N. in East N. curb of 428 St., 34' E. of Rowan Ave.

37536

37537

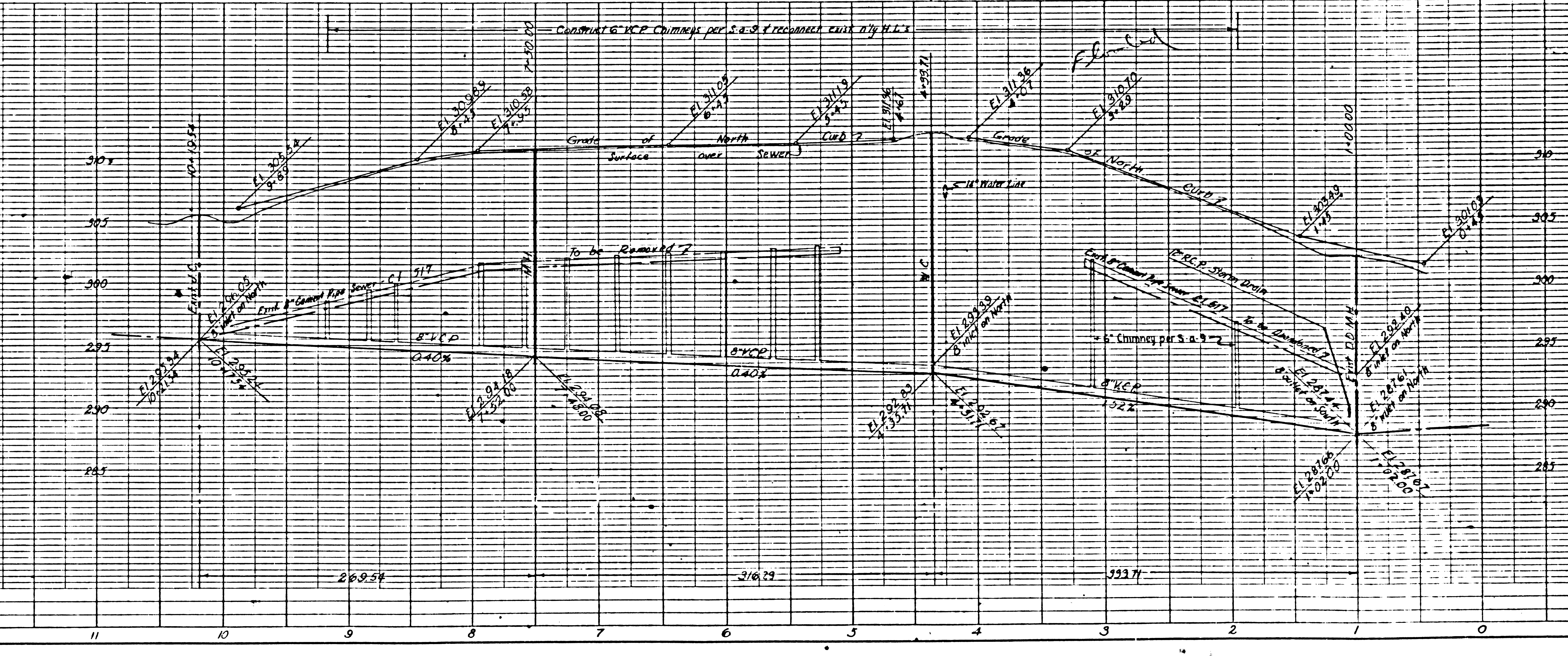
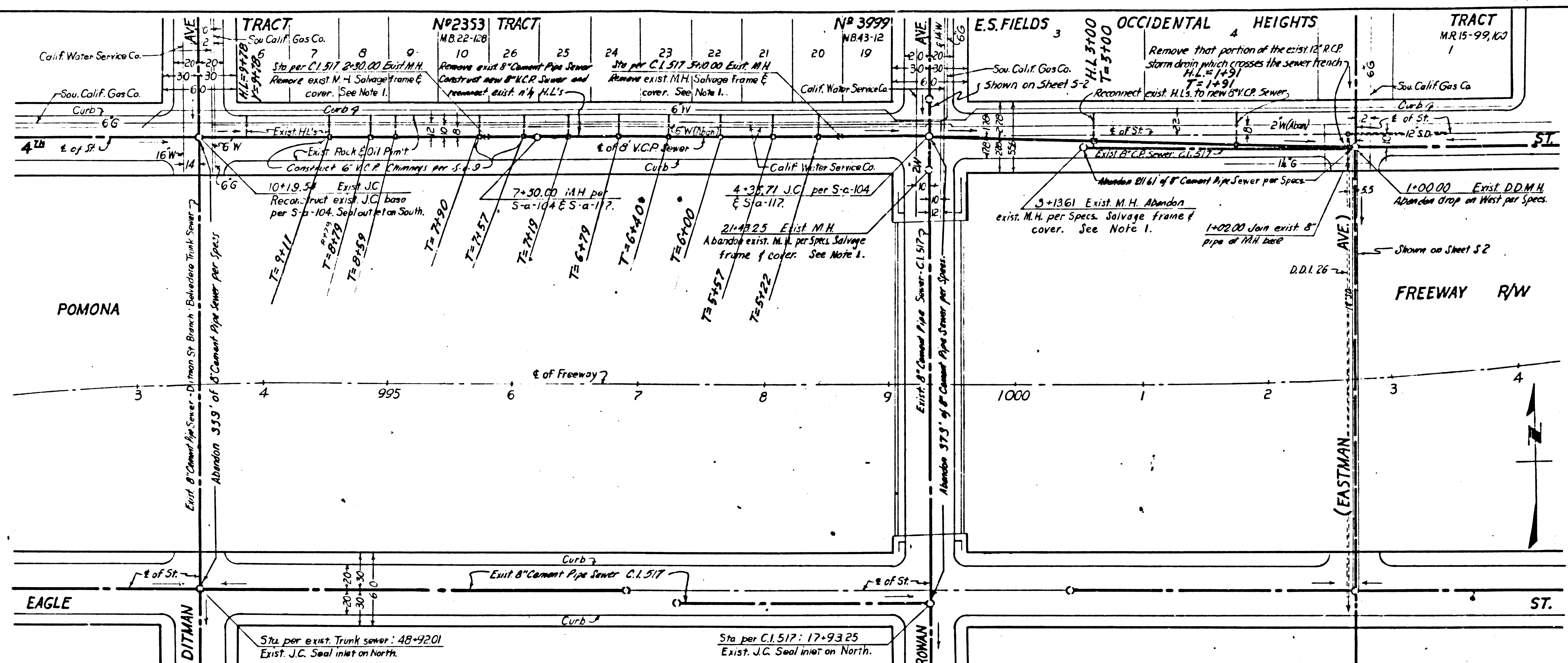
PLAN & PROFILE OF
SANITARY SEWERS
 TO BE RECONSTRUCTED UNDER
PRIVATE CONTRACT NO 5716
 SHEET S-3 WS 7 JUNE, 1961
 SCALES: Horiz: 1"=50'; Vert: 1"=5'
COUNTY OF LOS ANGELES, CALIFORNIA
 APPROVED, JOHN A. LAMBIE, COUNTY ENGINEER
 BY *[Signature]*
 ASSISTANT SANITATION ENGINEER
 APPROVED, J. D. PARKHURST, CHIEF ENGINEER
 COUNTY SANITATION DISTRICT NO 2
 BY *[Signature]*
 OFFICE ENGINEER

NOTES

- The Contractor shall deliver salvaged M.H. frames & covers to the County Sewer Maintenance Yard, at 1129 E. 59th St., Los Angeles or 2849 S. Myrtle Ave., Inglewood.
- The Contractor shall maintain sewer service at all times during construction.

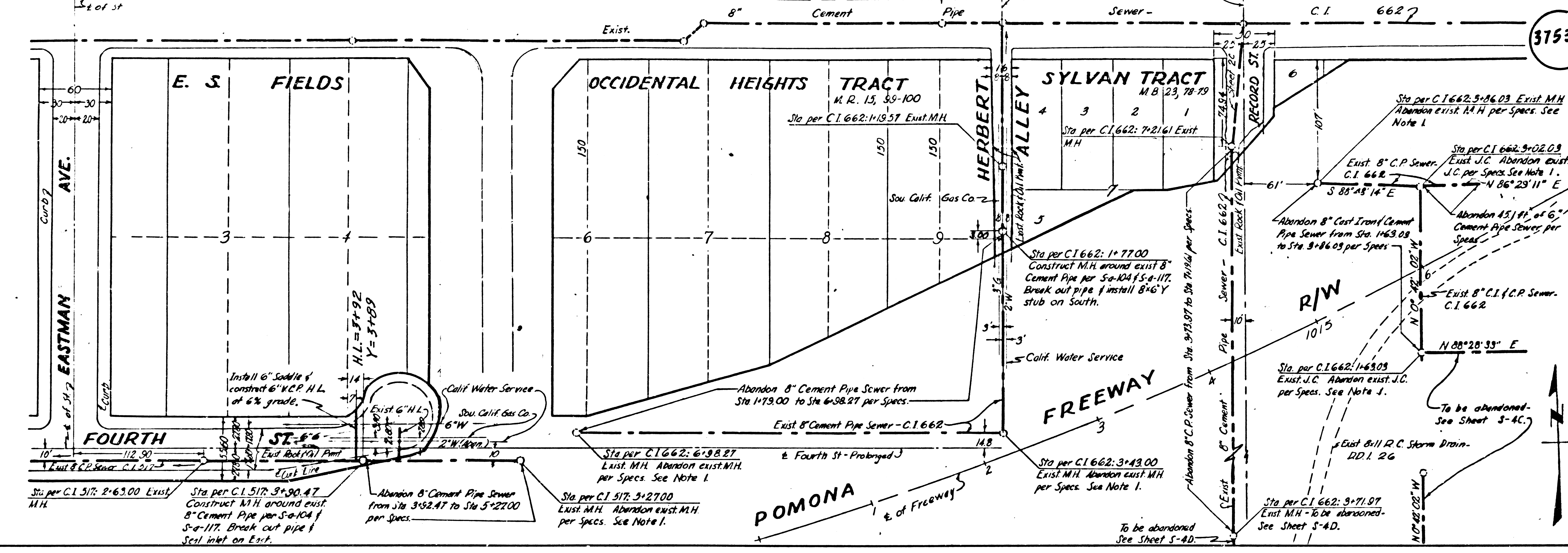
NO CONNECTIONS FOR THE DISPOSAL OF INDUSTRIAL WASTES SHALL BE MADE TO SEWERS SHOWN ON THESE DRAWINGS WITHOUT WRITTEN PERMISSION FROM THE COUNTY ENGINEER AND GENERAL MANAGER OF THE COUNTY SANITATION DISTRICTS.

Designed *J. Merritt*
 Checked *N. Wong*

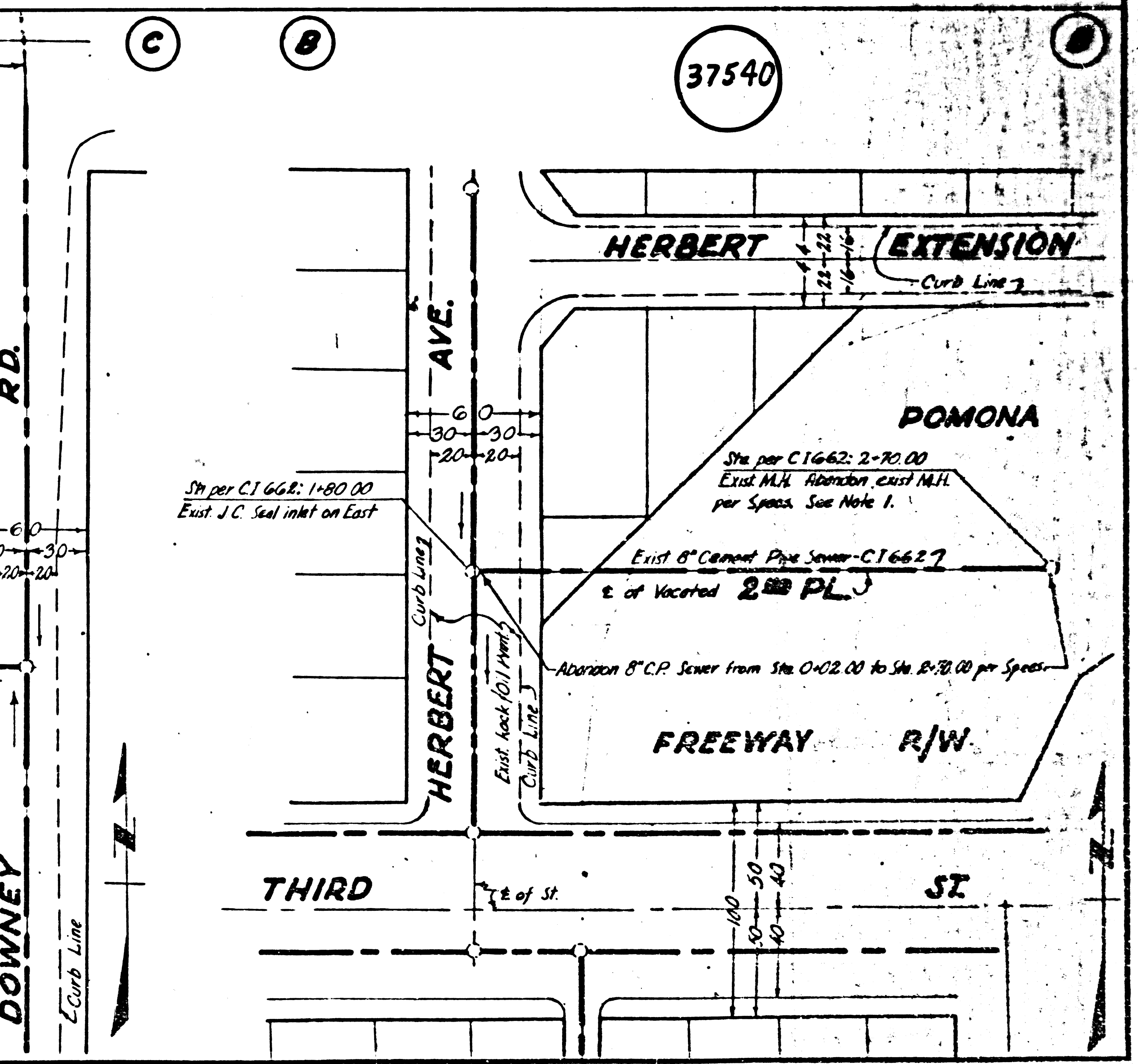
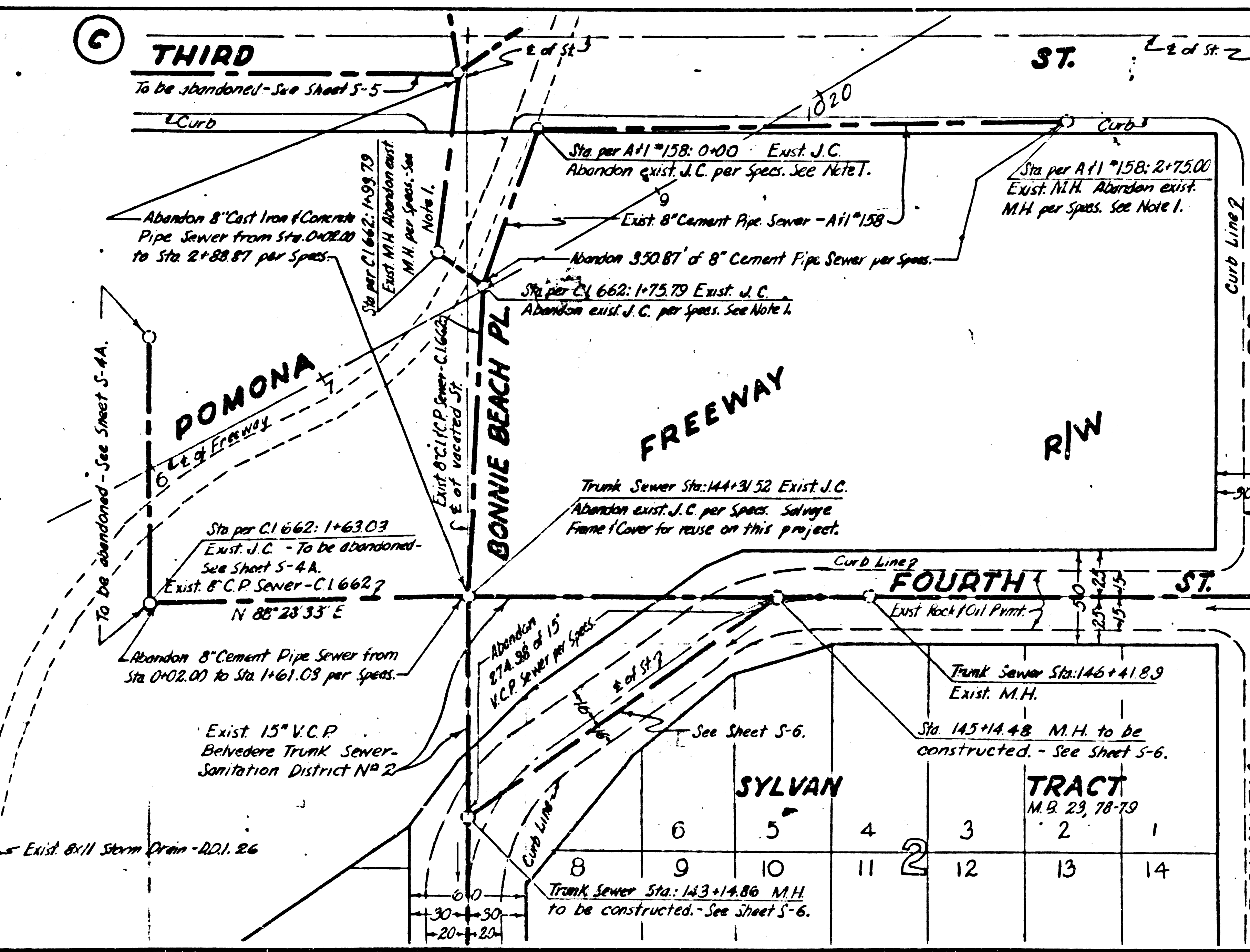
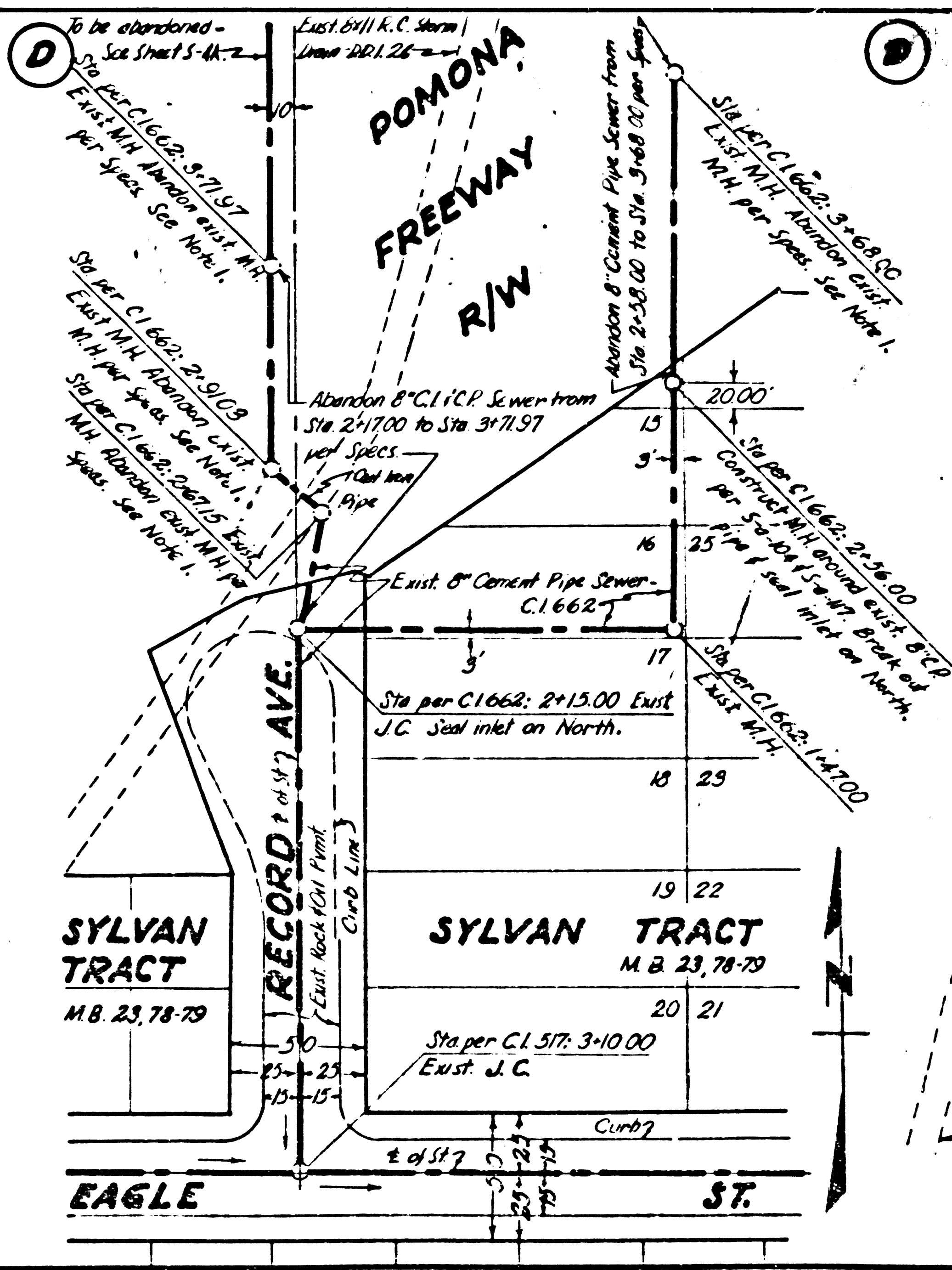


REG. NO.	STATE	FEDERAL PROJECT NO.	FEEL	SHEET NO.	TOTAL SHEETS
7	CALIF.				
DIST.	COUNTY	MAP	SUBDIV.	TRACT	SECTION
VII	LA	172	A		

THIRD ST. ST. 37539



DATE: 12-23-63
 REVISION: Added ref. of new sewer in record st.
 APPROVED: J.D. Parkhurst, Chief Engineer
 COUNTY SANITATION DISTRICT NO. 2
 PLAN OF SANITARY SEWERS TO BE RECONSTRUCTED UNDER PRIVATE CONTRACT NO. 5716 SHEET S-4 W.S. 7 JUNE, 1961 SCALE: 1"=50'
 COUNTY OF LOS ANGELES, CALIFORNIA
 APPROVED, JOHN A. LAMBE, COUNTY ENGINEER
 BY: J.D. Parkhurst, SANITATION ENGINEER
 APPROVED, J.D. PARKHURST, CHIEF ENGINEER
 COUNTY SANITATION DISTRICT NO. 2
 BY: J.D. Parkhurst, CHIEF ENGINEER
 NO CONNECTIONS FOR THE DISPOSAL OF INDUSTRIAL WASTES SHALL BE MADE TO SEWERS SHOWN ON THESE DRAWINGS WITHOUT WRITTEN PERMISSION FROM THE CHIEF ENGINEER AND GENERAL MANAGER OF THE COUNTY SANITATION DISTRICTS.
 NOTES:
 1. The Contractor shall deliver shaped M.H. covers & covers to the County Sewer Maintenance Yard, at 1129 E. 59th St., Los Angeles or 2849 S. Myrtle Ave., Irwindale.
 Designed: J. Lambe
 Checked: L. Eklund



Project Engineer	Date	Design Engineer	Date	Approval Recommended By	Date

PRINTED BY THE COUNTY OF LOS ANGELES

Dist. Eng. Dist. _____

37541

**PLAN & PROFILE OF
SANITARY SEWERS
TO BE RECONSTRUCTED UNDER
PRIVATE CONTRACT NO 5716**

SHEET 5-5 W.S. 7 MAY, 1962

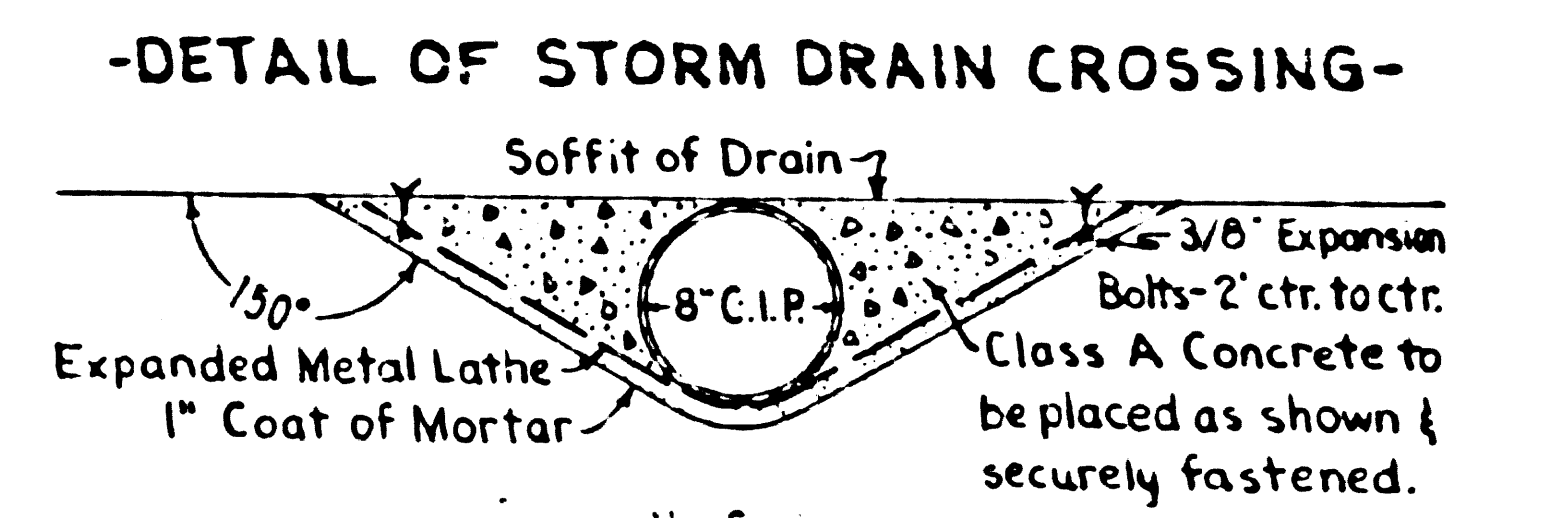
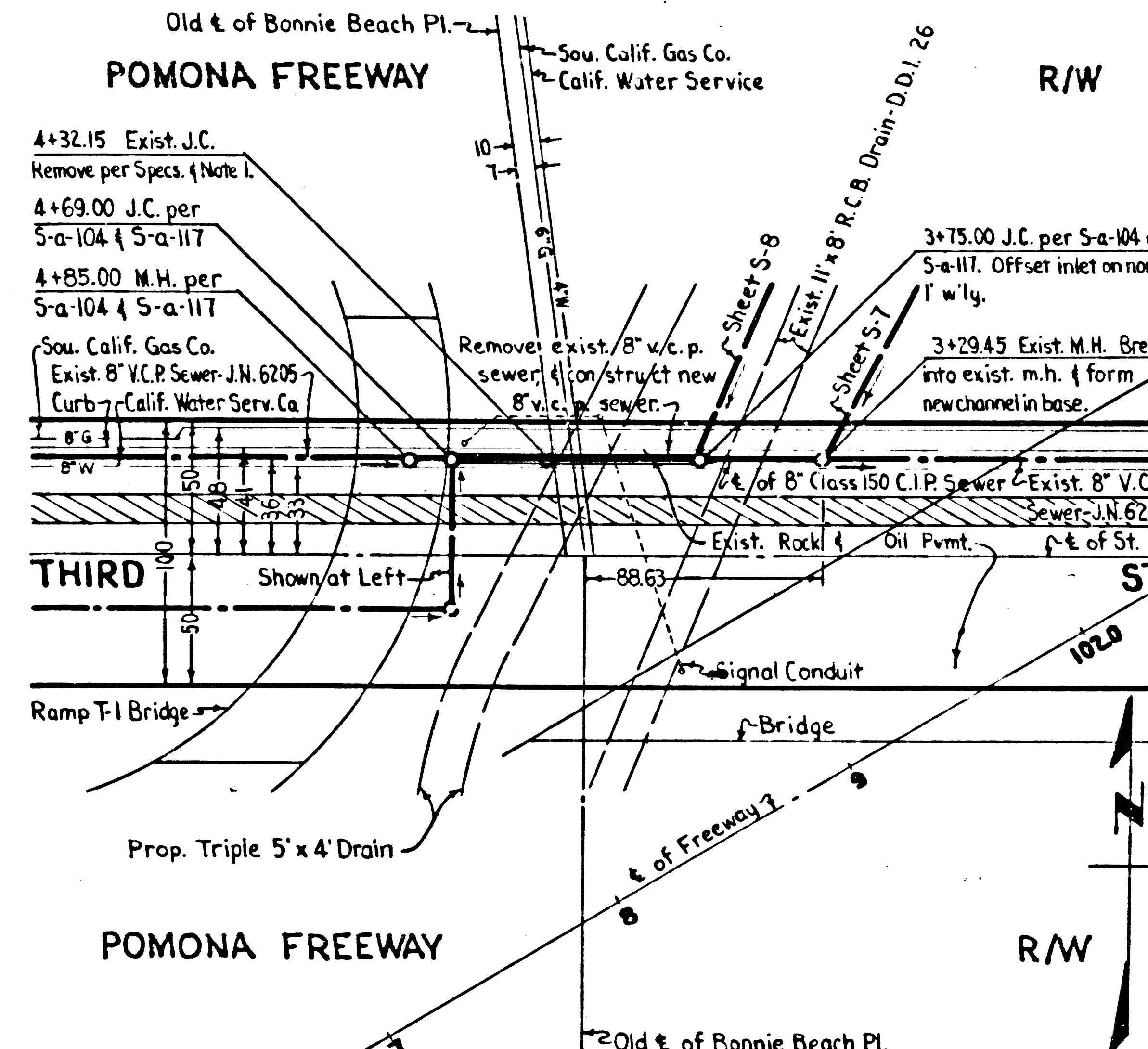
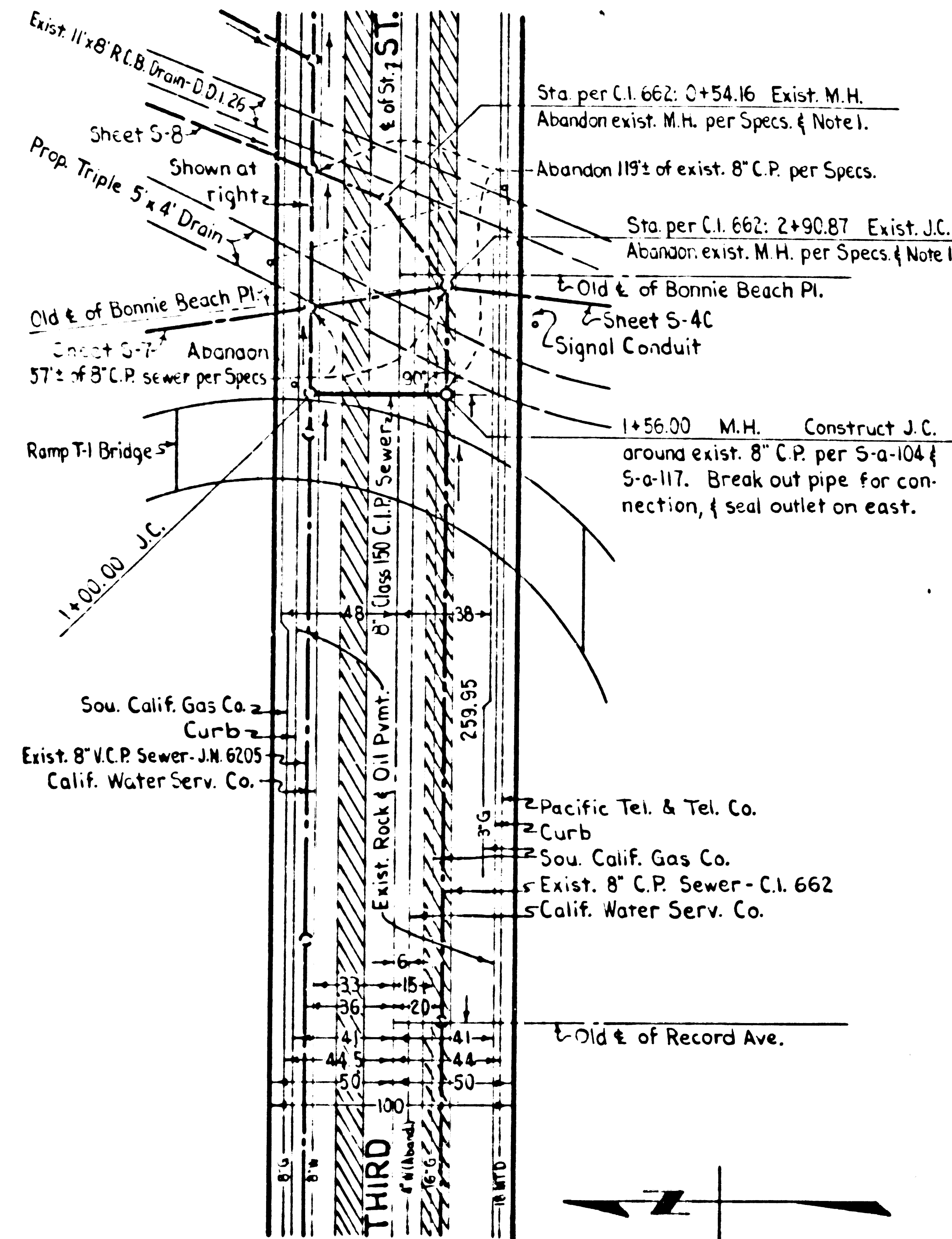
SCALE: Horiz.: 1"=50'; Vert.: 1"=5'

COUNTY OF LOS ANGELES, CALIFORNIA
APPROVED, JOHN A. LAMBIE, COUNTY ENGINEER

BY: *R. L. S. K.*
ASST. SANITATION ENGINEER

APPROVED, J. D. PARKHURST, CHIEF ENGINEER
COUNTY SANITATION DISTRICT NO 2

BY: *J. D. Parkhurst*
OFFICE ENGINEER



No Scale
NOTE

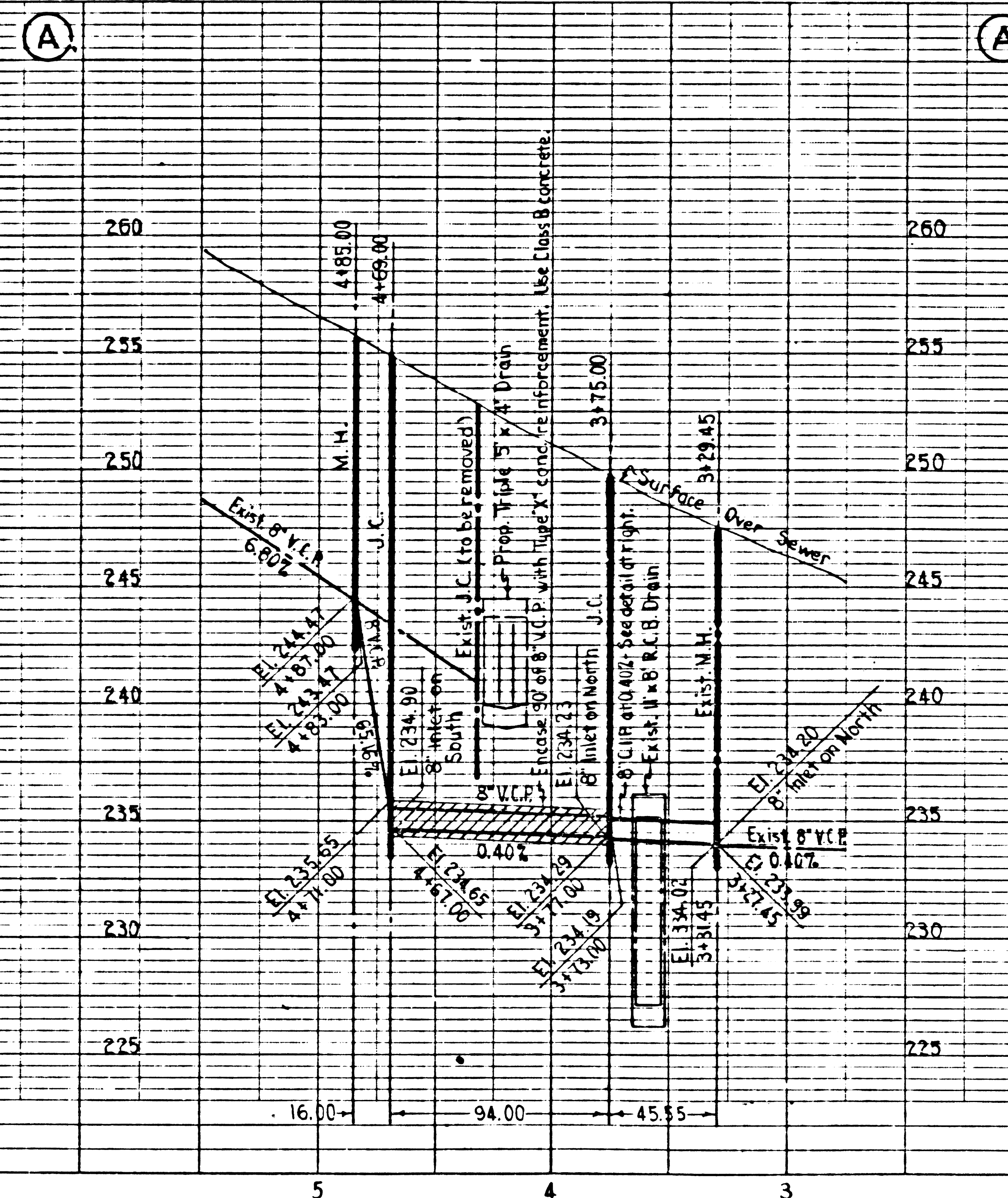
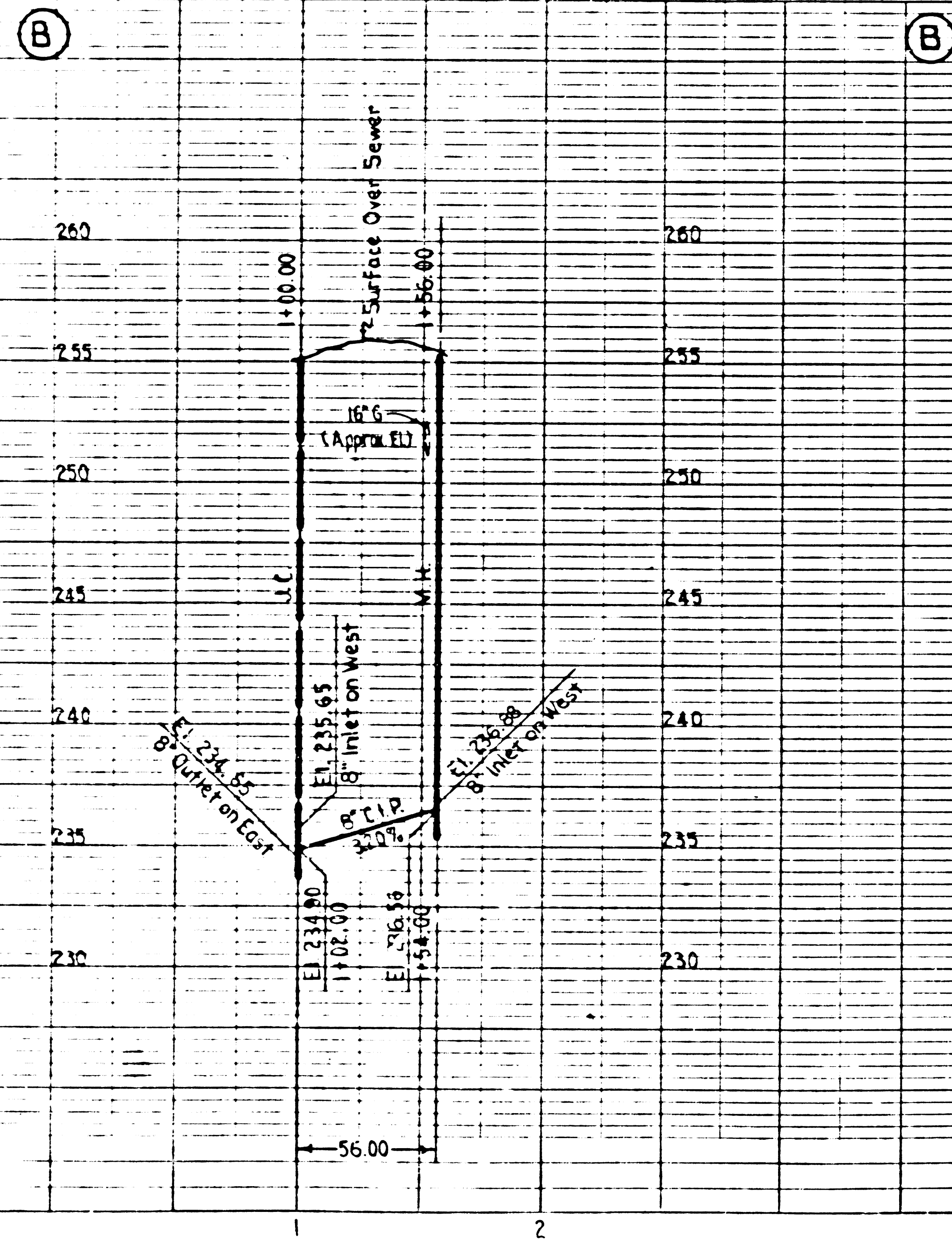
The maximum opening into the drain shall be the outside diameter of the 8" C.I.P. plus 1".
The core cut hole shall be made with equipment specially designed to cut a smooth hole without spalling & to the satisfaction of the Flood Control Dist. representative.
The Contractor shall comply with all requirements of Flood Control District Permit No 61552-B.
The Resident Engineer shall notify D.L. Patton by telephone, (Capitol 2815), Ext. 74341, at least 24 hours before starting any work on this sheet.

-NOTES-

1. The Contractor shall salvage the frames & covers from abandoned manholes on this sheet & deliver them to the County Sewer Maintenance Yard, 2849 S. Myrtle Ave., Irwindale, or 1129 E. 59th St., Los Angeles.

NO CONNECTIONS FOR THE DISPOSAL OF INDUSTRIAL WASTES SHALL BE MADE TO SEWERS SHOWN ON THESE DRAWINGS WITHOUT WRITTEN PERMISSION FROM THE CHIEF ENGINEER AND GENERAL MANAGER OF THE COUNTY SANITATION DISTRICTS.

DESIGNED: Honda, Mickell



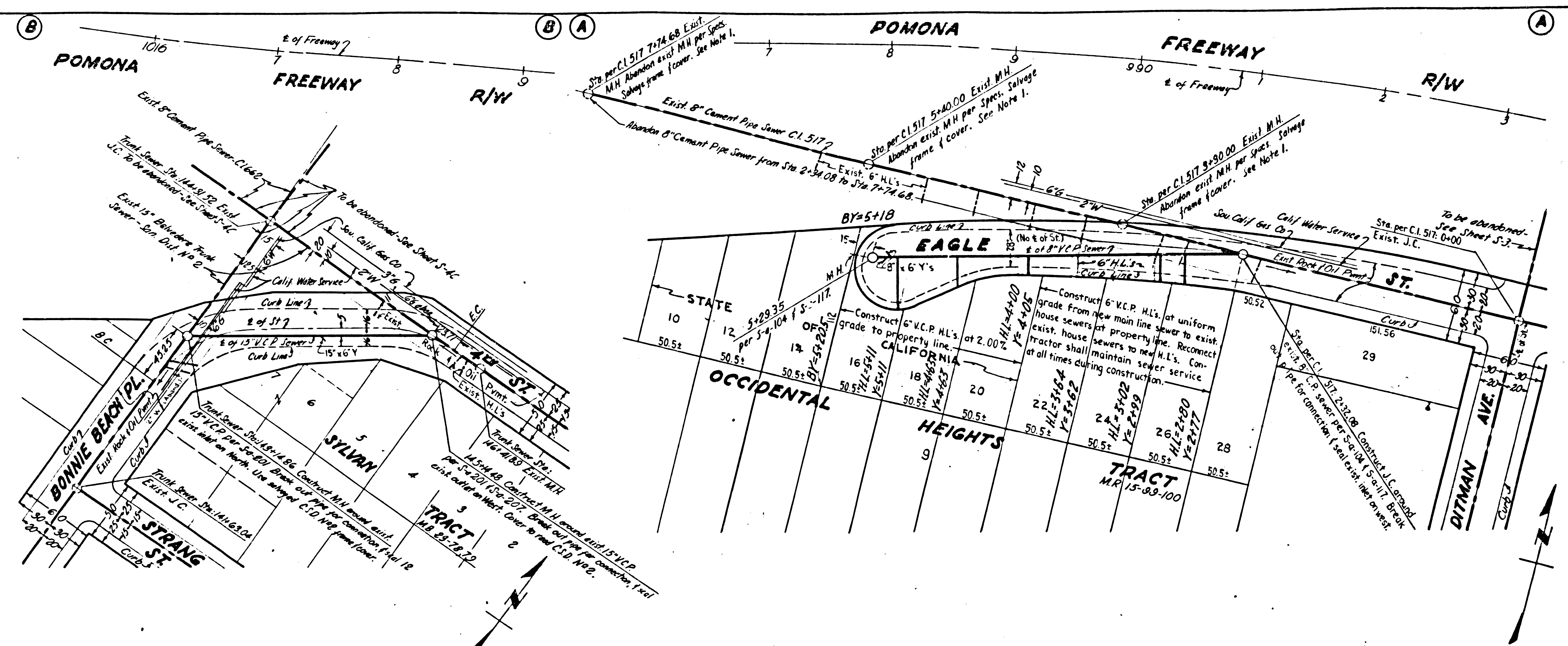
B.M. 15-A-58 EL. 263.79 L. 215.2, R. 4
S.E. Cor. Record Ave. & 33rd St.
C.M. in lead in E. Curb P.S. of C.R.

37542

Project Engineer	Date	Design Engineer	Date	Approval Recommended By	Date

B.P. No.	STATE	FEDERAL PROJECT No.	SHEET No.	TOTAL SHEETS
7	CALIF.			

DIST.	COUNTY	ROUTE	SEC.	SHEET No.	TOTAL SHEETS
VII	LA	172	A		



37543

PLAN & PROFILE OF SANITARY SEWERS TO BE RECONSTRUCTED UNDER PRIVATE CONTRACT NO 5716

SHEET S-6 W.S. 7 JUNE, 1961

SCALES: Horiz: 1"=50'; Vert: 1"=5'

COUNTY OF LOS ANGELES, CALIFORNIA

APPROVED, JOHN A. LAMBIE, COUNTY ENGINEER

BY *Richard E. Eklund*
 ASST. SANITATION ENGINEER

APPROVED, J. D. PARKHURST, CHIEF ENGINEER
 COUNTY SANITATION DISTRICT NO 2

BY *M. M. Marriott*
 OFFICE ENGINEER

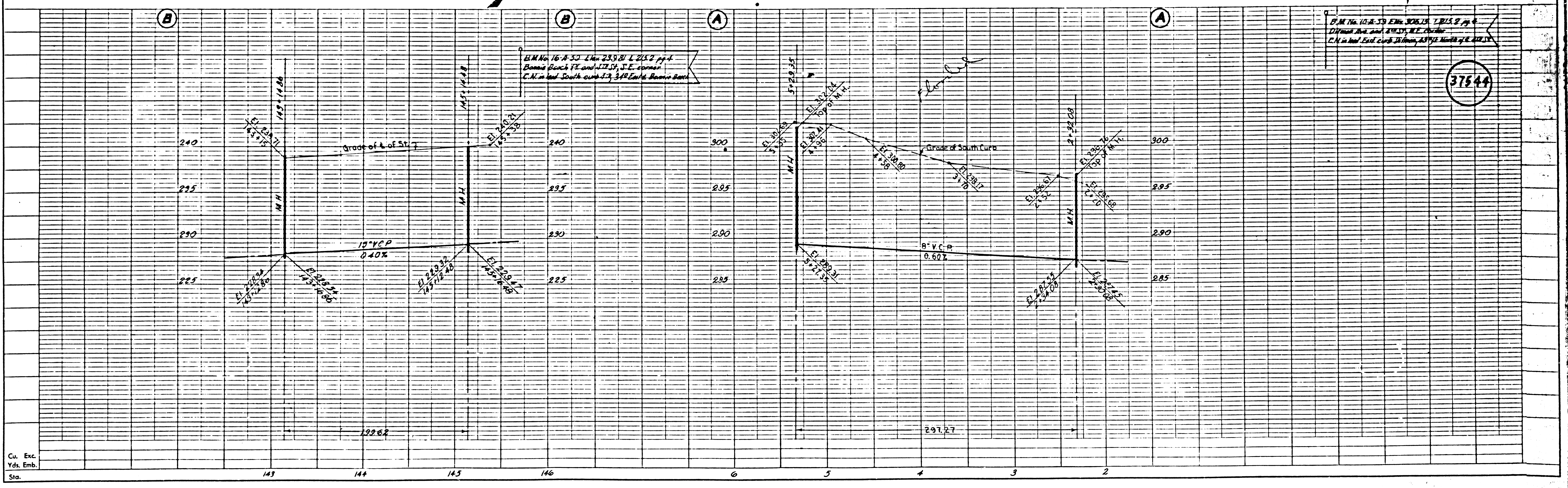
NOTES

1. The Contractor shall deliver salvaged M.H. frames & covers to the County Sewer Maintenance Yard, at 1129 E. 59th St., Los Angeles or 2849 S. Myrtle Ave., Irwindale.

NO CONNECTIONS FOR THE DISPOSAL OF INDUSTRIAL WASTES SHALL BE MADE TO SEWERS SHOWN ON THESE DRAWINGS WITHOUT WRITTEN PERMISSION FROM THE CHIEF ENGINEER AND GENERAL MANAGER OF THE COUNTY SANITATION DISTRICT.

BEFORE BREAKING INTO ANY EXISTING STRUCTURE AND BEFORE FINAL ACCEPTANCE OF THIS WORK, COUNTY SANITATION DISTRICT (DU 4-1281) SHALL BE NOTIFIED IN ORDER THAT REQUIRED INSPECTION CAN BE MADE.

Designed	M. MARRIOTT
Checked	L. Eklund



37544

PLAN No. 112-A-39 EMB. 30613A 1215.8 pg 4
 Ditman Ave. and 2849 S. Myrtle Ave.
 C.M. in hand East curb Ditman at Myrtle North of E. 41st St.

Cu. Exc.
 Yds. Emb.

Approved _____ Dist. Eng. Dist.

37545

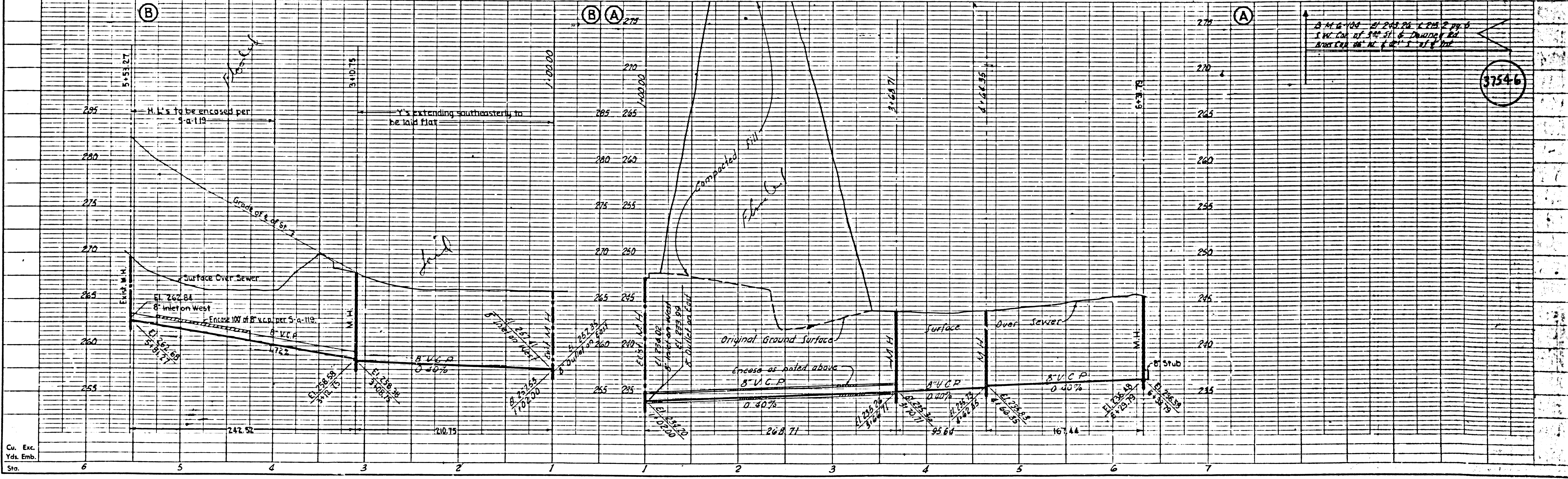
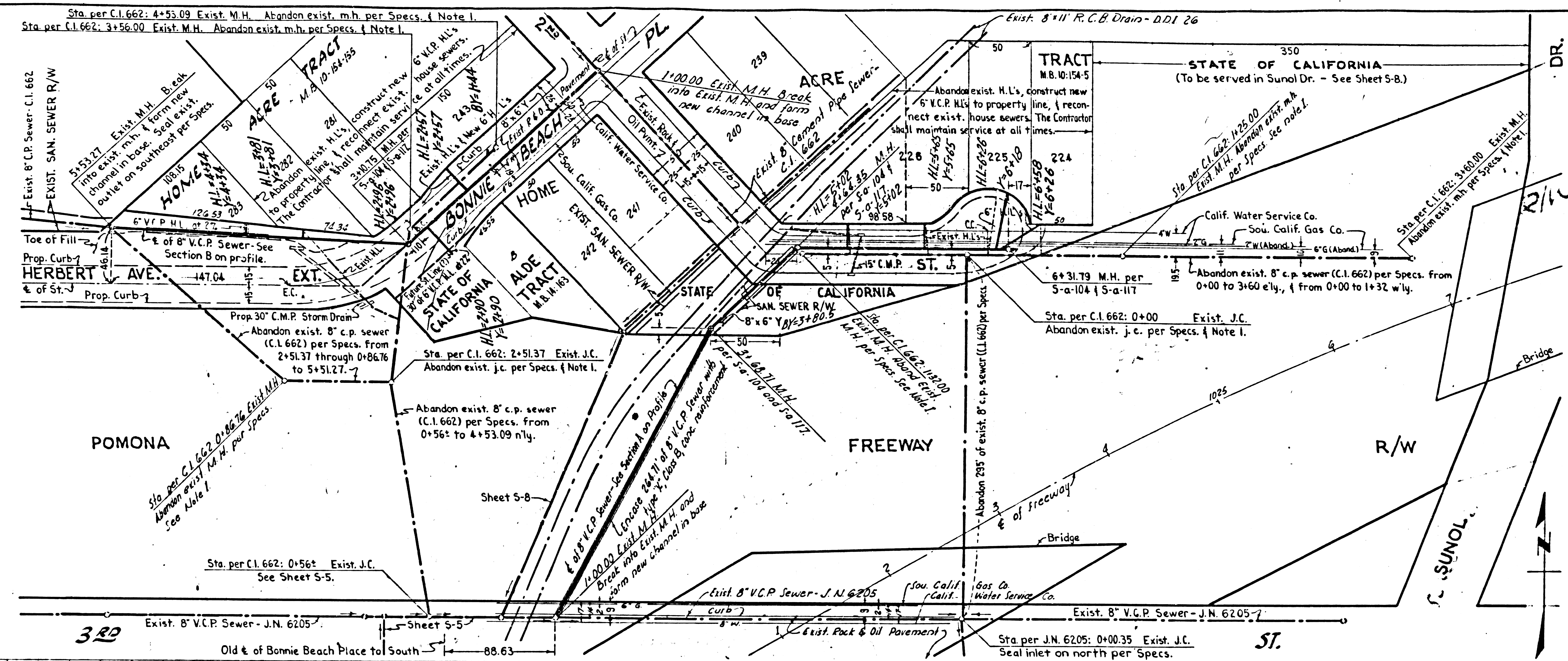
PLAN & PROFILE OF
SANITARY SEWERS
 TO BE RECONSTRUCTED UNDER
PRIVATE CONTRACT NO 5716
 SHEET 5-7 W.S. 7 OCT. 1961
 SCALES: Horiz: 1"=50'; Vert: 1"=5'
COUNTY OF LOS ANGELES, CALIFORNIA
 APPROVED, JOHN A. LAMBIE, COUNTY ENGINEER

BY _____ ASST. SANITATION ENGINEER
 APPROVED, J.D. PARKHURST, CHIEF ENGINEER
 COUNTY SANITATION DISTRICT NO 2
 BY _____ OFFICE ENGINEER

NOTE
 1. The Contractor shall salvage the frames & covers from abandoned m.h.'s. on this sheet, & deliver them to the County Sewer Maintenance Yard, at 1129 E. 59th St., Los Angeles or 2849 S. Myrtle Ave., Irwindale.

NO CONNECTIONS FOR THE DISPOSAL OF INDUSTRIAL WASTES SHALL BE MADE TO SEWERS SHOWN ON THESE DRAWINGS WITHOUT WRITTEN PERMISSION FROM THE CHIEF ENGINEER AND GENERAL MANAGER OF THE COUNTY SANITATION DISTRICTS.

DESIGNED HONDA
 CHECKED W. WISHELL



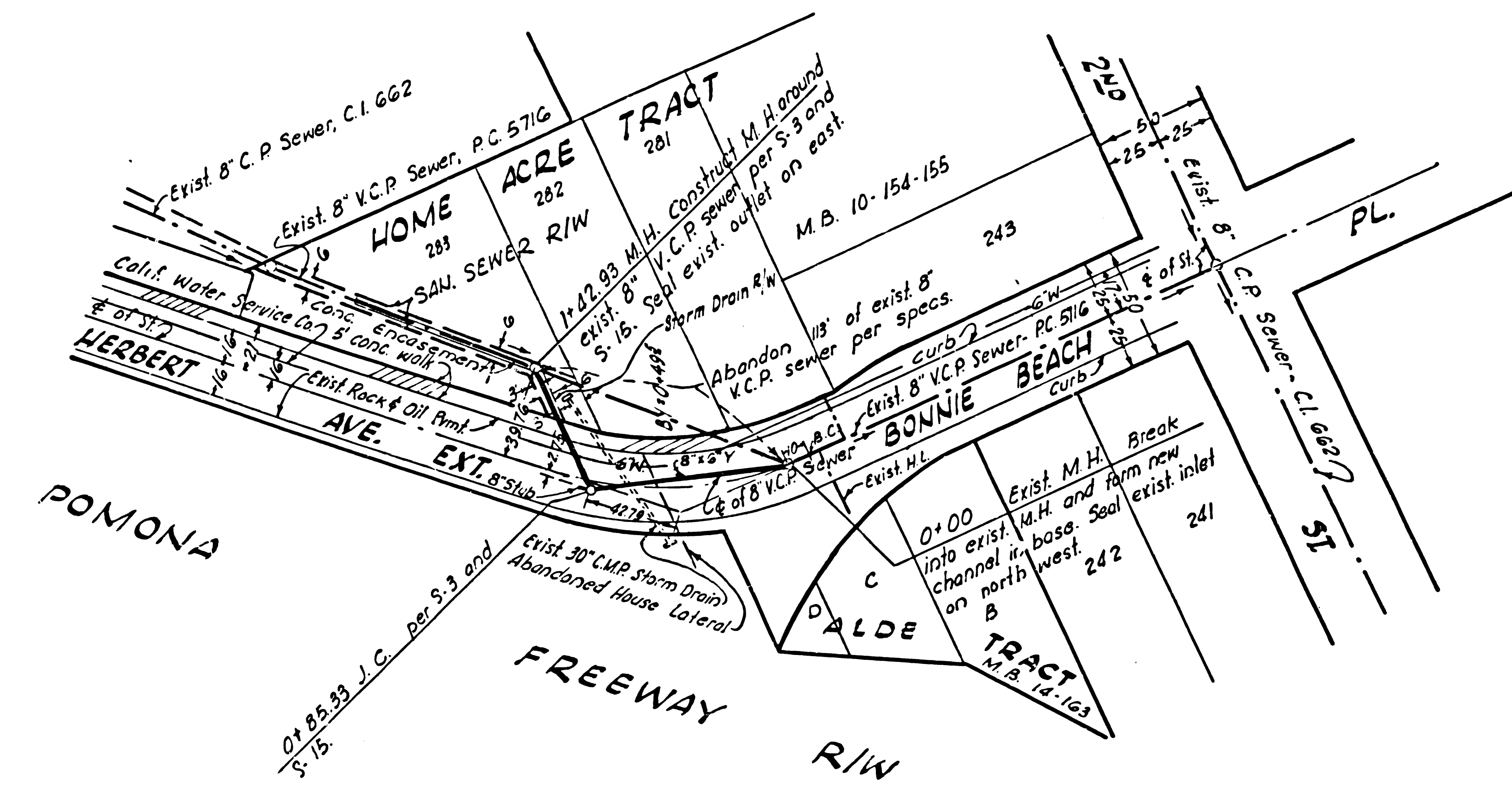
37546

Cu. Exc.
 Yds. Emb.
 Sta.

REVISION	APPROVED	DATE
Moved J.C. to Herbert Ave	<i>R. J. [Signature]</i>	10-15-65

Approved _____ Dist. Eng. Dist.

PLAN AND PROFILE OF
SANITARY SEWERS
 TO BE RECONSTRUCTED UNDER
P.C. 5716 B
CONTRACT CHANGE ORDER
 (REVISION OF SHEET S-78)
 W.S. 7 JUNE, 1965
 COUNTY OF LOS ANGELES, CALIFORNIA
 Approved, JOHN A. LAMBIE, COUNTY ENGINEER
 By: *R. J. [Signature]*
 ASST. SANITATION ENGINEER, C.E. 7860



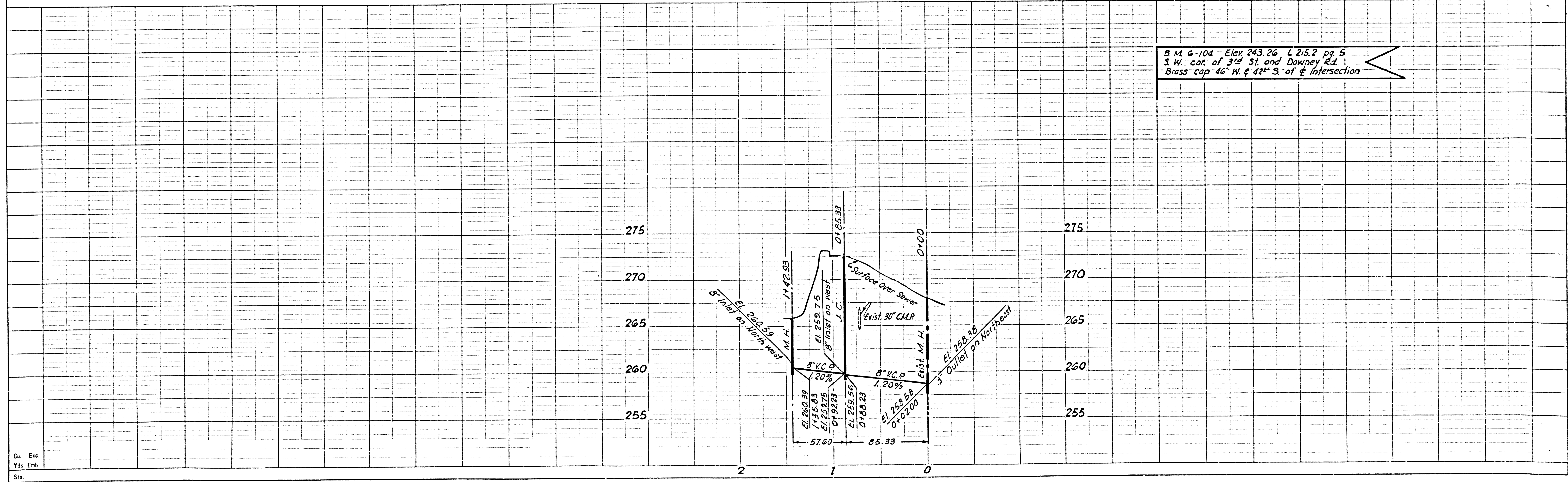
The Resident Engineer shall notify the Construction Division of the Los Angeles County Engineer by telephone 629-4747, Ext. 81551 at least 24 hours before starting any work under this contract.

No connections for the disposal of industrial wastes shall be made to sewers shown on this drawing without written permission from the Chief Engineer and General Manager of the County Sanitation Districts.

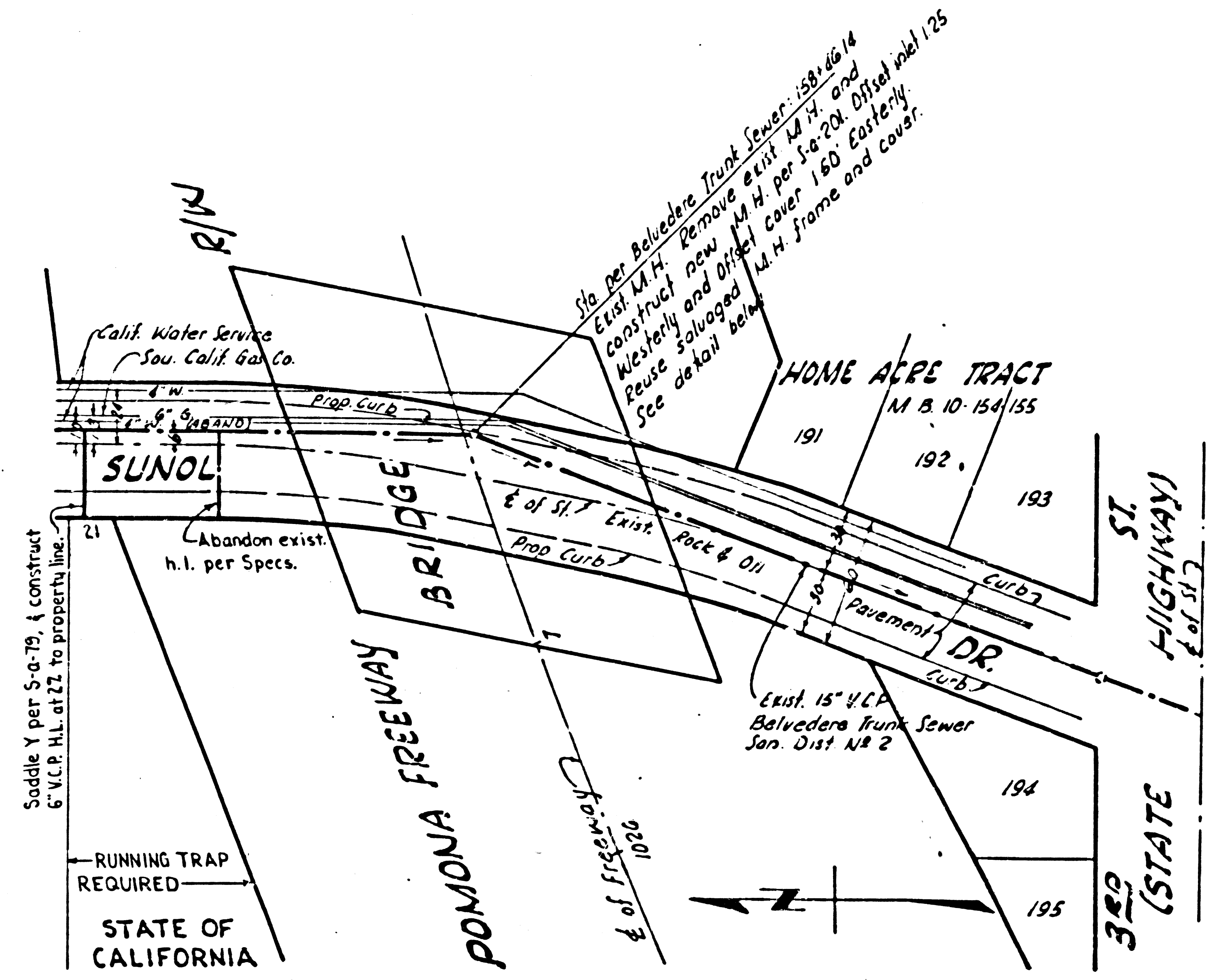
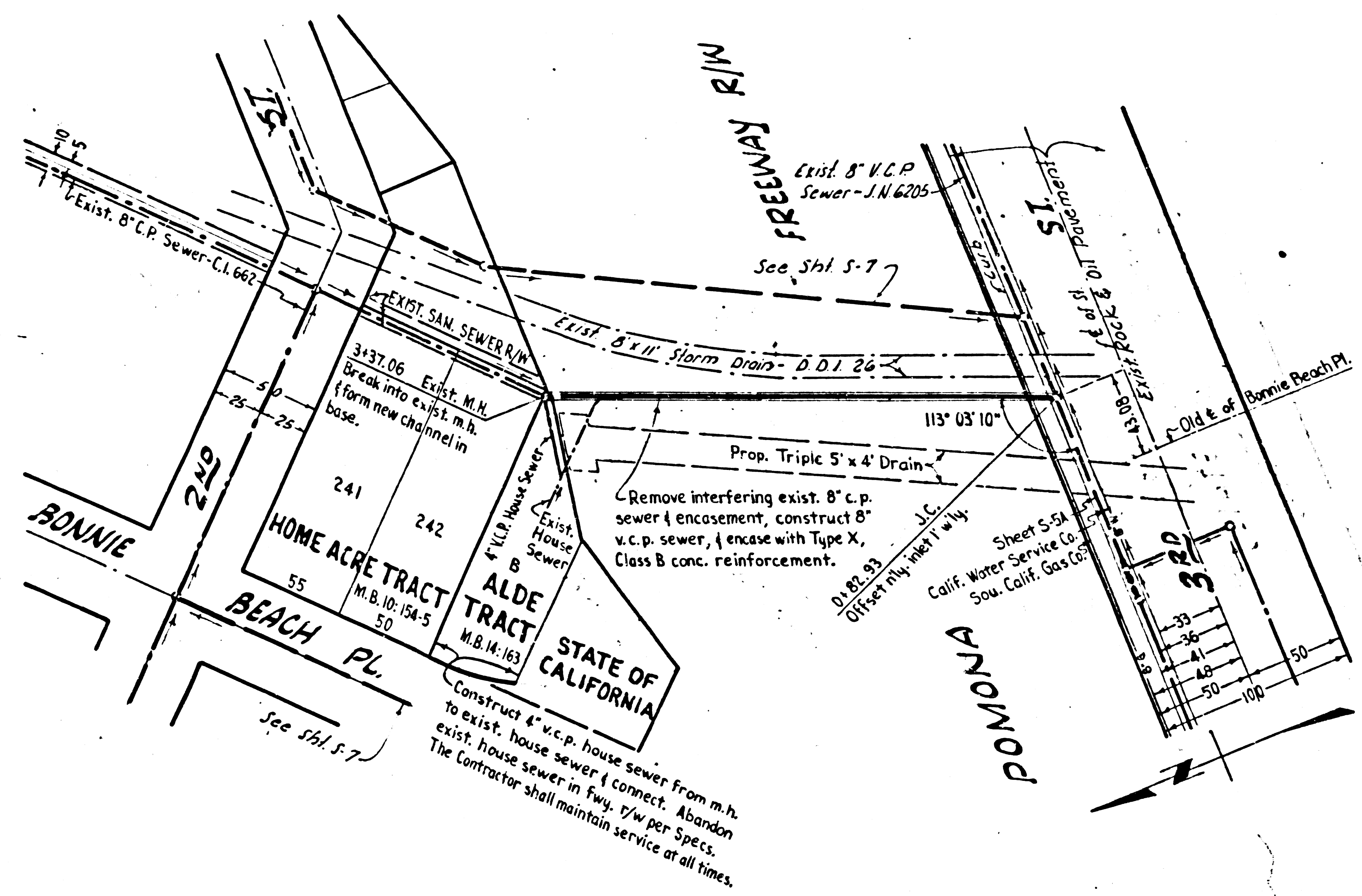
38899

DRAWN	Honda
CHECKED	Miskell

B.M. 6-104 Elev 243.26 L 215.2 pg 5
 S.W. cor. of 3rd St. and Downey Rd.
 Brass cap 46" W. & 42" S. of ϕ intersection



Cu. Exc.
 Yds. Emb.
 Sta.



37547

Approved _____ Dist. Eng. Dist. _____

**PLAN & PROFILE OF
SANITARY SEWERS
TO BE RECONSTRUCTED UNDER
PRIVATE CONTRACT NO 5716**

SHEET 5-B W.S. 7 DEC. 1961
SCALES: Horiz: 1"=50'; Vert: 1"=5'
COUNTY OF LOS ANGELES, CALIFORNIA
APPROVED, JOHN A. LAMBIE, COUNTY ENGINEER

BY J. O. Parkhurst
J. O. PARKHURST, CHIEF ENGINEER
COUNTY SANITATION DISTRICT NO 2

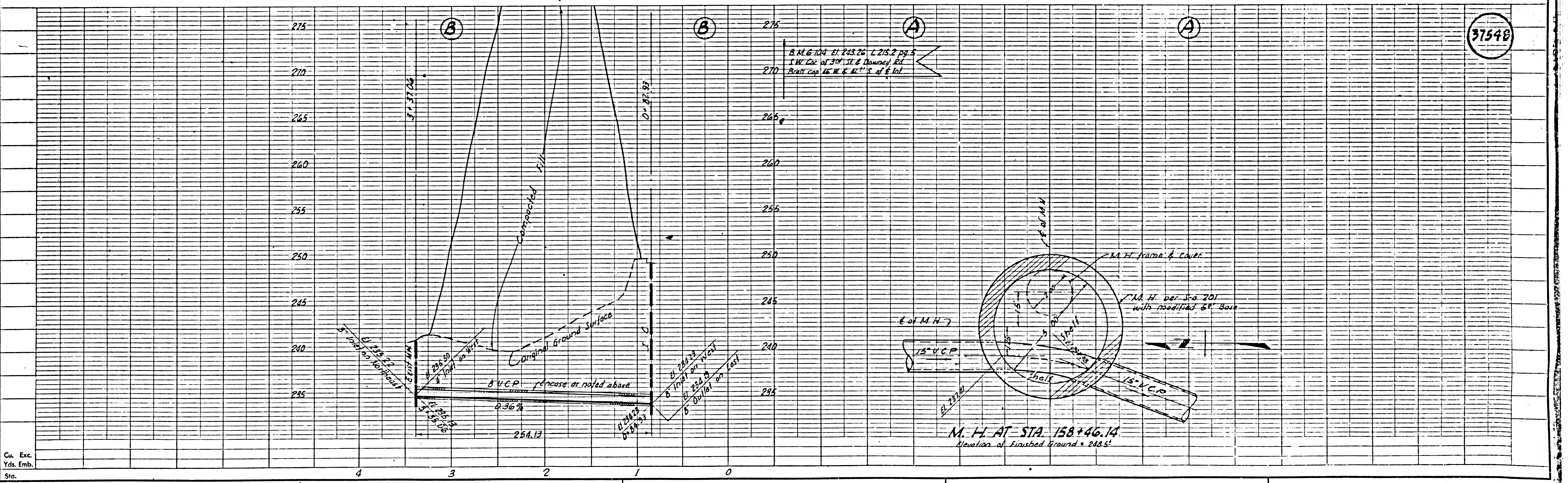
BY S. J. Wallace
OFFICE ENGINEER

NOTE

The Contractor shall notify Mr. Bob Powell of the County Sanitation Districts by telephone, NE-wda 63097, at least 48 hours before starting any sewer work on this sheet.

NO CONNECTIONS FOR THE DISPOSAL OF INDUSTRIAL WASTES SHALL BE MADE TO SEWERS SHOWN ON THESE DRAWINGS WITHOUT WRITTEN PERMISSION FROM THE CHIEF ENGINEER AND GENERAL MANAGER OF THE COUNTY SANITATION DISTRICTS.

DESIGNED	HONOR
CHECKED	W. WICKHAM



Project Engineer	Date	Design Engineer	Date	Approval Recommended by	Date