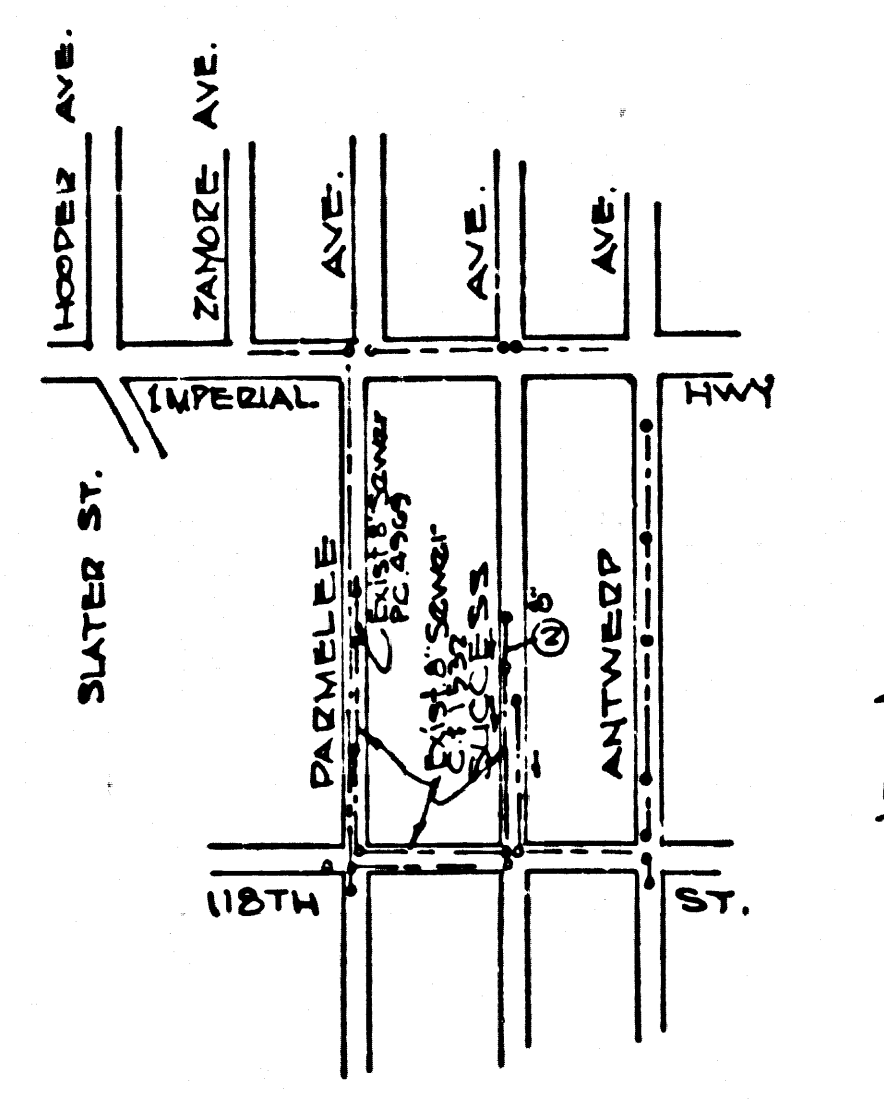


FIRESTONE BLDG. DIST. NO. 1

PROFILE ALIGNMENT AND GRADE OF P.C. 5718
SANITARY SEWERS PAGE 1
 TO BE CONSTRUCTED IN J.N. 0354.80

B.M. 34.181 ELEV. 92909, WIRE SPK. IN
 S.C.B. IMPERIAL HWY. 33' E. ACCESS
 AVE. (1955 WATTS QUAD.)



INDEX MAP
 P.C. 5718
 SCALE: 1"=200'

Olson Surveying Service Inc. assumes no responsibility for the location of existing utility lines. A thorough search has been made with utility companies known to have lines in this area and with the County of Los Angeles Underground Section. The Sewer Contractor shall verify locations of all utility lines.

- NOTES:**
1. PROVIDE STAKES ON THE PROPERTY LINE OR PROPERTY LINES PRODUCED AT RIGHT ANGLES TO THE SEWER LINE AT THE CENTER LINE OF EACH MANHOLE.
 2. NO REPRESENTATIVE OF THE COUNTY ENGINEER WILL SURVEY OR LAY OUT ANY PORTION OF THE WORK.
 3. THE OWNER OR HIS AUTHORIZED REPRESENTATIVE SHALL FURNISH THE COUNTY ENGINEER WITH GRADE SHEETS AND STATIONING FOR ALL HOUSE LATERALS AND Y BRANCHES AND SHALL PROVIDE STAKES FOR THEM AT THEIR PROPER LOCATIONS WITH STATIONING PLAINLY MARKED. ANY CHANGE IN LOCATION SHALL BE REQUESTED IN WRITING BY THE OWNER OR HIS REPRESENTATIVE.
 4. THE CONTRACTOR SHALL FURNISH THE HOUSE LATERAL DEPTH AT THE PROPERTY LINE BELOW THE TOP OF CURB.
 5. THE SEWER SHALL BE CONSTRUCTED AT THE GRADE SHOWN ON THE GRADE SHEET.
 6. NO REVISIONS SHALL BE MADE IN THESE PLANS WITHOUT THE APPROVAL OF THE COUNTY ENGINEER.
 7. USE STANDARD MANHOLE FRAMES AND COVERS, S-117, SHOW AS NOTED.
 8. USE STANDARD STRENGTH PIPE SHOW AS NOTED.
 9. USE CEMENT MORTAR OR "WEDGE-LOCK" OR "SPEED-SEAL" FOR ALL V.C.P. JOINTS PER SPECS., SECS. 34 & 48.
 10. RESURFACE ALL TRENCH WITHIN PAVED AREA TO MEET L.A. COUNTY ROAD DEPT. OR CALIF. STATE HIGHWAY REQUIREMENTS IN ACCORDANCE WITH PERMITS.
 11. ENCASE FOUR FEET OF SEWER AT POINTS OF INTERFERENCE WITH POLES, CASE III, S-172.
 12. HOUSE LATERALS TO BE CONSTRUCTED WITH INVERTS AT PROPERTY LINE PER BELOW CURB GRADE SHEETS AS NOTED.
 13. ALL STRUCTURES SHALL BE BRICK SEWER STRUCTURES, S-104, SHOW AS NOTED.
 14. FOR ALLOWABLE LEAKAGE TEST USE FORMULA NO. 1, SPECS., SEC. 34.
 15. MANHOLE TOPS IN UNIMPROVED RIGHTS-OF-WAY TO BE SIX INCHES ABOVE FINISHED GRADE.
 16. THE CONTRACTOR SHALL NOTIFY THE CONSTRUCTION & STORM DRAIN DIVISION BY TELEPHONE, MADISON 5-077, EXT. 8-524 AT LEAST TWENTY-FOUR HOURS BEFORE STARTING ANY WORK UNDER THIS CONTRACT.
 17. EXT. SPECIFICATIONS DATED OCTOBER 10, 1950 APPLY IN THE CONSTRUCTION OF THIS PROJECT.

NO CHARGE FOR CONNECTIONS
L. Walker

SUCCESS STREET
PRIVATE CONTRACT NO. 5718

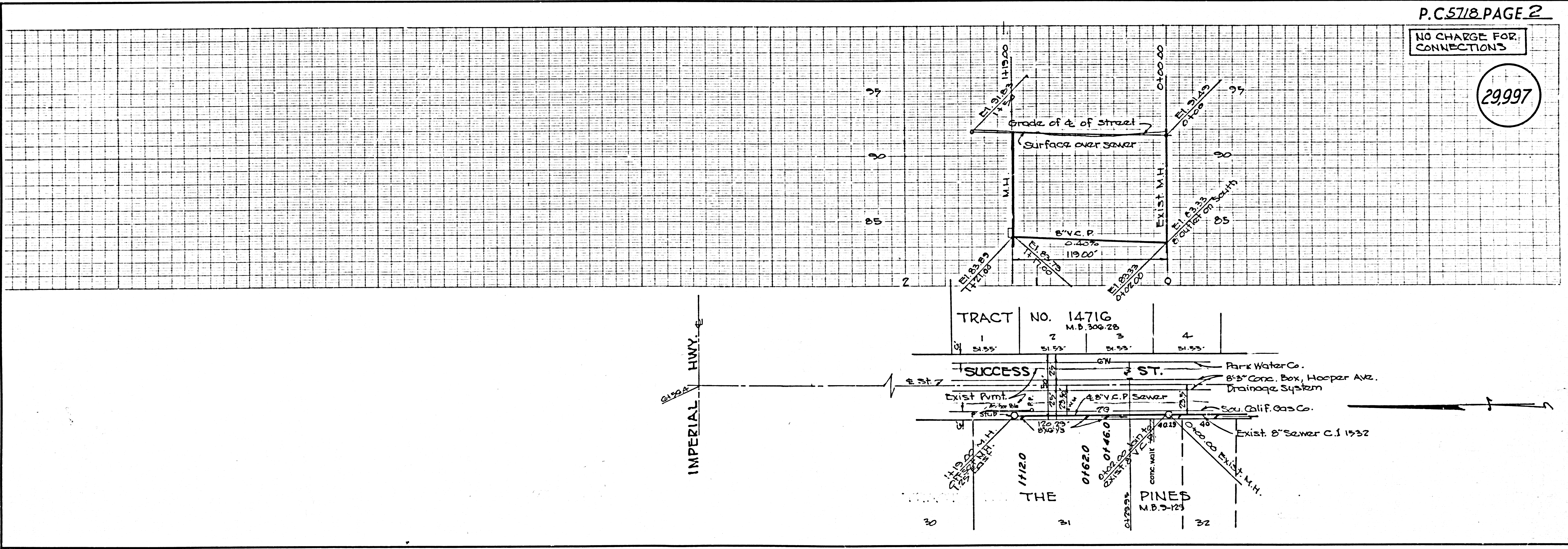
W.S. 20
 1 SHEET ; 2 PAGES
 SCALE: VERT. 1"=4' OCTOBER 1960
 HORIZ. 1"=40'
 PREPARED IN THE OFFICES OF
OLSON SURVEYING SERVICE 29996
 BY *Frank W. Phillips*
 REG. C. E. NO. 7820
 FOR LEGEND SEE PLAN NO. S-A-64

NOTE:
 GRADES TO WHICH THIS IMPROVEMENT IS TO BE CONSTRUCTED ARE SHOWN ON PLANS AND PROFILES. GRADE POINTS FOR TOP OF CURBS, CENTER LINE OF STREETS, OR CENTER LINE OF ALLEYS ARE SHOWN BY CIRCLES ON PROFILES. AT ALL POINTS BETWEEN DESIGNATED POINTS THE GRADE SHALL BE ESTABLISHED SO AS TO CONFORM TO A STRAIGHT LINE DRAWN BETWEEN SAID DESIGNATED POINTS.
 ELEVATIONS ARE IN FEET ABOVE U.S.C. & G.S. SEA LEVEL DATUM OF 1929.
 THIS DRAWING AND THE DATA HEREON ARE HEREBY MADE A PART OF THE SPECIFICATIONS.
 WORK SHALL BE CONSTRUCTED ACCORDING TO SPECIFICATIONS ON FILE IN THE OFFICE OF THE COUNTY ENGINEER AND SHALL BE PROSECUTED ONLY IN THE PRESENCE OF THE COUNTY ENGINEER.
 BEFORE WORK CAN BE STARTED, THE CONTRACTOR MUST OBTAIN A PERMIT TO EXCAVATE IN COUNTY STREETS FROM THE L. A. COUNTY ROAD DEPT., DISTRICT OFFICE NO. 3, AND PAY A FEE TO THE COUNTY ENGINEER, ROOM 24 PAN AMERICAN BUILDING, 233 SO. BROADWAY SUFFICIENT TO COVER THE COST OF CONSTRUCTION INSPECTION AND RECORD PLANS.
 APPROVAL OF THIS PLAN BY THE COUNTY OF LOS ANGELES DOES NOT CONSTITUTE A REPRESENTATION AS TO THE ACCURACY OF THE LOCATION OF OR THE EXISTENCE OR NON-EXISTENCE OF ANY UNDERGROUND UTILITY PIPE, OR STRUCTURE WITHIN THE LIMITS OF THIS PROJECT. THIS NOTE APPLIES TO ALL PAGES.
 IF WORK IS TO BE DONE IN A STATE HIGHWAY, A PERMIT MUST BE OBTAINED FROM THE STATE OF CALIFORNIA, DIVISION OF HIGHWAYS, 120 SOUTH SPRING STREET.

COUNTY OF LOS ANGELES, CALIFORNIA
 APPROVED, JOHN A. LAMBIE, COUNTY ENGINEER APPROVED, *C. R. Compton* CHIEF ENGINEER
 REG. SAN. DIST. NO. 1
 BY *E. E. Brand* ASST. SANITATION ENGINEER BY *J. C. Lanning* OFFICE ENGINEER
 CHECKED BY *R. K. Wade* 11-25-60
 OFFICE OF COUNTY ENGINEER, REG. C. E. NO. 2486

SUBMITTED BY *Jack C. Lanning*
 PALOS VERDES-CENTINELA VALLEY REGIONAL ENGINEER

P.C. 5718 PAGE 2



NO CHARGE FOR CONNECTIONS

29,997

TRACT NO. 14716
 M.B. 306-28

SUCCESS ST.
 Park Water Co.
 8" Conc. Box, Hooper Ave.
 Drainage System
 Sou. Calif. Gas Co.
 Exist. 8" Sewer C.I. 1532

THE PINES
 M.B. 3-123