

DOUBLE SCALE

WEST HOLLYWOOD BUILDING DISTRICT NO. 9

PC. 5728  
PAGE 1  
JN. 0650.01

PRIVATE CONTRACT NO. 5728

PROFILE, ALIGNMENT AND GRADE OF  
SANITARY SEWERS

TO BE CONSTRUCTED IN  
SANTA MONICA BOULEVARD  
AND OTHER RIGHTS OF WAY

PAGE 1 OF 4 PAGES

30809

SCALE VERT. 1" = 4 FT.  
HORIZ. 1" = 40 FT. FEBRUARY, 1961

COUNTY OF LOS ANGELES, CALIFORNIA

JOHN A. LAMBIE

COUNTY ENGINEER

RECOMMENDED *E. E. Proulx*  
ASSISTANT SANITATION ENGINEER

APPROVED *S. H. Hughes*  
SANITATION ENGINEER

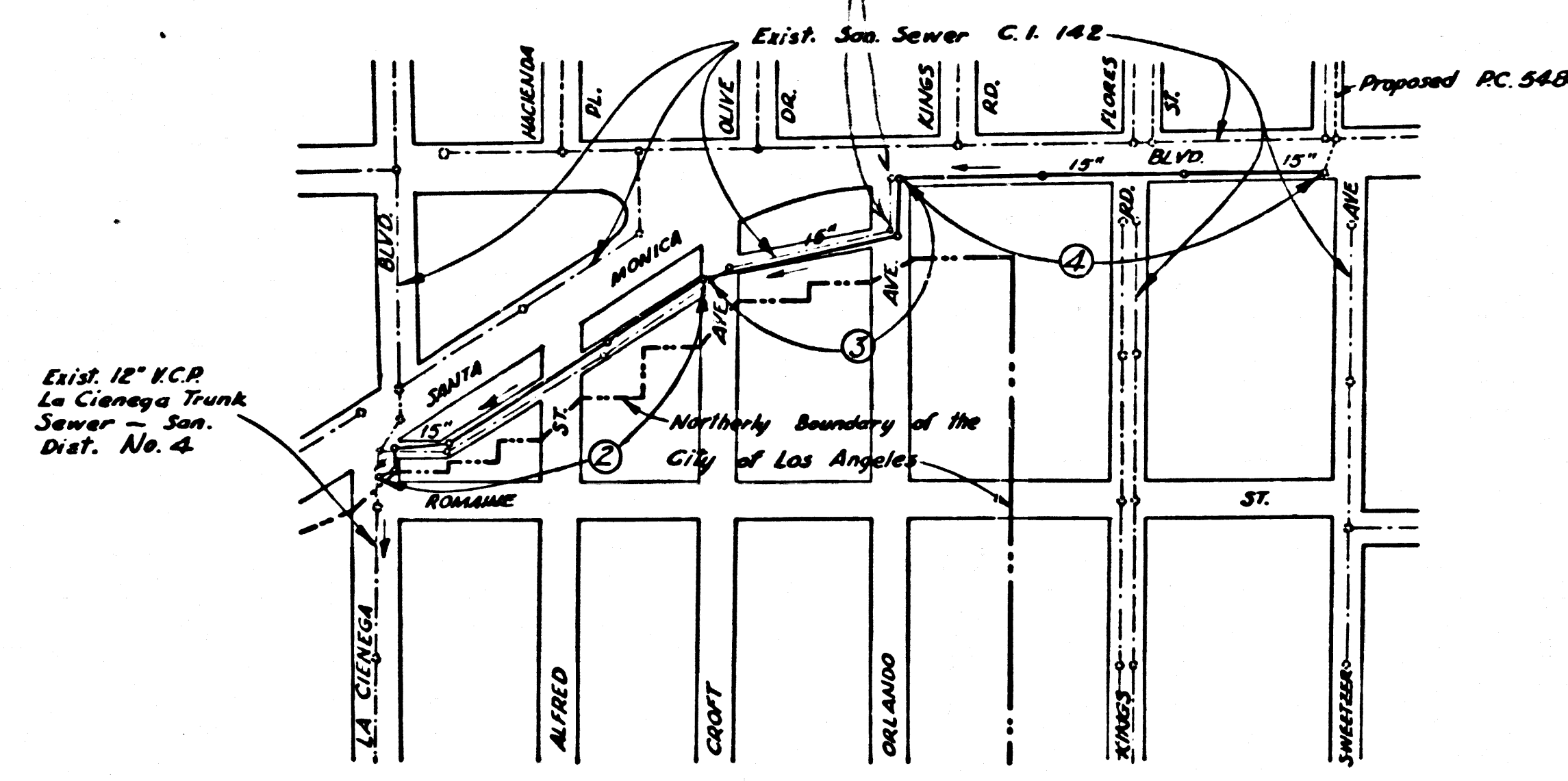
C. R. COMPTON  
CHIEF ENGINEER OF COUNTY  
SANITATION DISTRICT NO. 4  
BY *J. Jaime*  
DISTRICT ENGINEER

FOR LEGEND  
SEE PLAN NO. S-A-44

NOTE: GRADES TO WHICH THIS IMPROVEMENT IS TO BE CONSTRUCTED ARE SHOWN ON PLANS AND PROFILES. GRADE POINTS FOR TOP OF CURB CENTER LINE OF STREET OR CENTER LINE OF ALLEY ARE SHOWN BY CIRCLES ON PROFILES. AT ALL POINTS BETWEEN DESIGNATED POINTS THE GRADE SHALL BE ESTABLISHED SO AS TO CONFORM TO A STRAIGHT LINE DRAWN BETWEEN SAID DESIGNATED POINTS.  
ELEVATIONS ARE IN FEET ABOVE U. S. C. & G. S. SEA LEVEL DATUM AS OF 1929.  
UNIT PRICES FOR ADDITIONAL WORK WHICH MAY BE REQUIRED BUT WHICH CANNOT BE ASCERTAINED IN ADVANCE, SHALL BE SUBMITTED IN THE PROPOSAL.  
THIS DRAWING AND THE DATA HEREON ARE HEREBY MADE A PART OF THE SPECIFICATIONS.

REFERENCES		
W. S. 22	DESIGNED	Higginson
A. B. 311, 1687	TRACED	Higginson
F. B. 2197, 966 & 977	CHECKED	Jaime
		Dec. 1960
		Feb. 1961
		Mar. 1961

BM 13-05390 Elev. 227.749 FB. 2197-11  
Std. L.A. City Hex. Bar in H.H. & La Cienega  
Blvd. 65.7' N of & Romaine St.



INDEX MAP  
R.C. 5728  
SANTA MONICA BOULEVARD  
SCALE 1" = 300'

NO CHARGE FOR CONNECTIONS

*Jaime*

USE STANDARD STRENGTH PIPE EXCEPT AS NOTED.

USE PLASTISOL JOINTS PER SECS. 36 & 48 OF SPECS.

ALL STRUCTURES SHALL BE BRICK SEWER STRUCTURES AS PER PLAN NO. S-A-104 EXCEPT AS NOTED.

USE STANDARD MANHOLE FRAMES AND COVERS AS PER PLAN NO. S-A-117, EXCEPT AS NOTED.

RESURFACE TRENCH WITHIN PAVED AREA WITH PREMIX ROCK AND OIL 4 INCHES IN THICKNESS EXCEPT AS NOTED.

USE FORMULA NO. 1 SEC. 54 OF SPECIFICATIONS TO COMPUTE ALLOWABLE LEAKAGE.

THE CONTRACTOR SHALL NOTIFY THE CONSTRUCTION DIV. BY TELEPHONE MADISON 9-4747, EXT. 01551 AT LEAST 24 HOURS BEFORE STARTING ANY WORK UNDER THIS CONTRACT.

CONSTRUCT HOUSE LATERALS WITH INVERTS AT PROPERTY LINE 6 FEET BELOW CURB GRADE, OR GRADE OF CENTER LINE OF STREET EXCEPT AS NOTED.

FIGURES IN CIRCLES AT ENDS OF HOUSE LATERALS INDICATE DEPTH BELOW CURB GRADE, OR GRADE OF CENTER LINE OF STREET.

FIGURES IN CIRCLES AT ENDS OF HOUSE LATERALS INDICATE HOUSE LATERALS SHALL BE CONSTRUCTED WITH 1/4" RISE PER FOOT TO PROPERTY LINE.

WORDS IN CIRCLES AT ENDS OF HOUSE LATERALS INDICATE V'S SHALL BE LAID HORIZONTAL AND HOUSE LATERALS SHALL BE CONSTRUCTED WITH 1/4" RISE PER FOOT TO PROPERTY LINE.

CONSTRUCTION IN STATE HIGHWAYS SHALL CONFORM WITH STATE HIGHWAY PERMIT.

FLOW IN EXISTING SERVICES MUST BE MAINTAINED DURING CONSTRUCTION.

EXISTING HOUSE LATERALS NOT TO BE CONNECTED TO NEW CONSTRUCTION UNLESS SO INDICATED ON PLANS.

BEFORE BREAKING INTO ANY EXISTING STRUCTURE AND BEFORE FINAL ACCEPTANCE OF THIS WORK, COUNTY SANITATION DISTRICT (DU 4-1281) SHALL BE NOTIFIED IN ORDER THAT REQUIRED INSPECTION CAN BE MADE.

NO CONNECTIONS FOR THE DISPOSAL OF INDUSTRIAL WASTES SHALL BE MADE TO SEWERS SHOWN ON THESE DRAWINGS WITHOUT WRITTEN PERMISSION FROM THE CHIEF ENGINEER AND GENERAL MANAGER OF THE COUNTY SANITATION DISTRICTS.

PC. 5728 PAGE 2

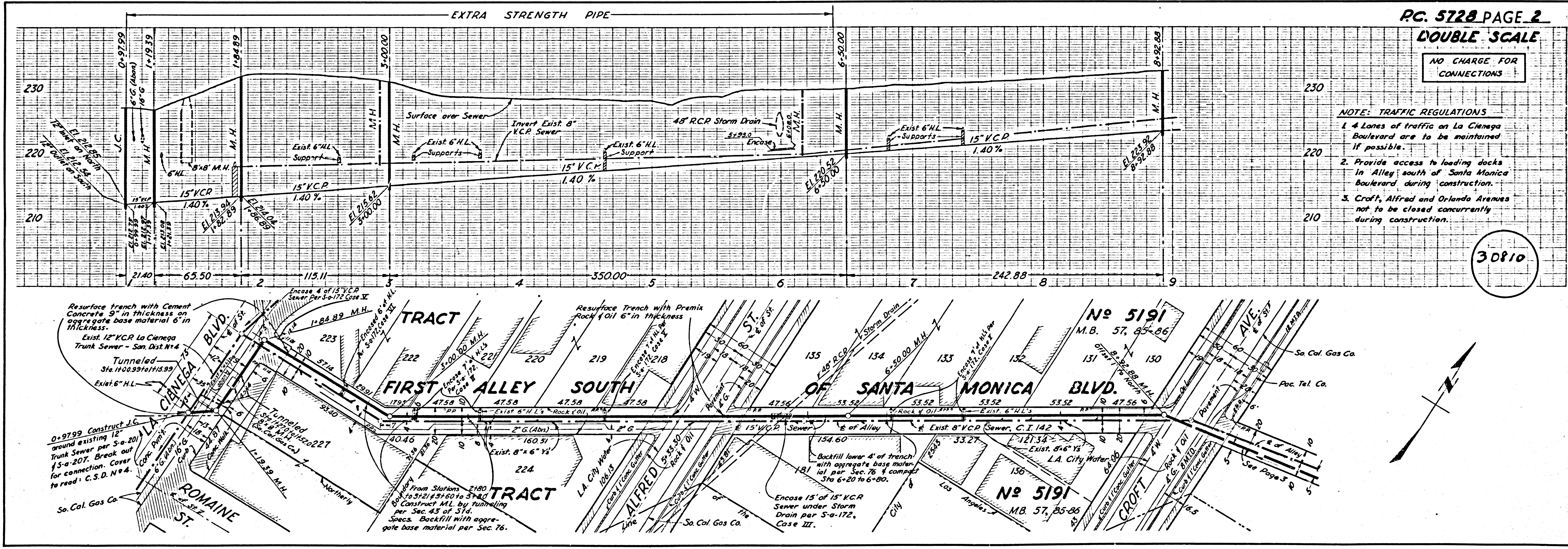
DOUBLE SCALE

NO CHARGE FOR CONNECTIONS

NOTE: TRAFFIC REGULATIONS

- 4 Lanes of traffic on La Cienega Boulevard are to be maintained if possible.
- Provide access to loading docks in Alley south of Santa Monica Boulevard during construction.
- Croft, Alfred and Orlando Avenues not to be closed concurrently during construction.

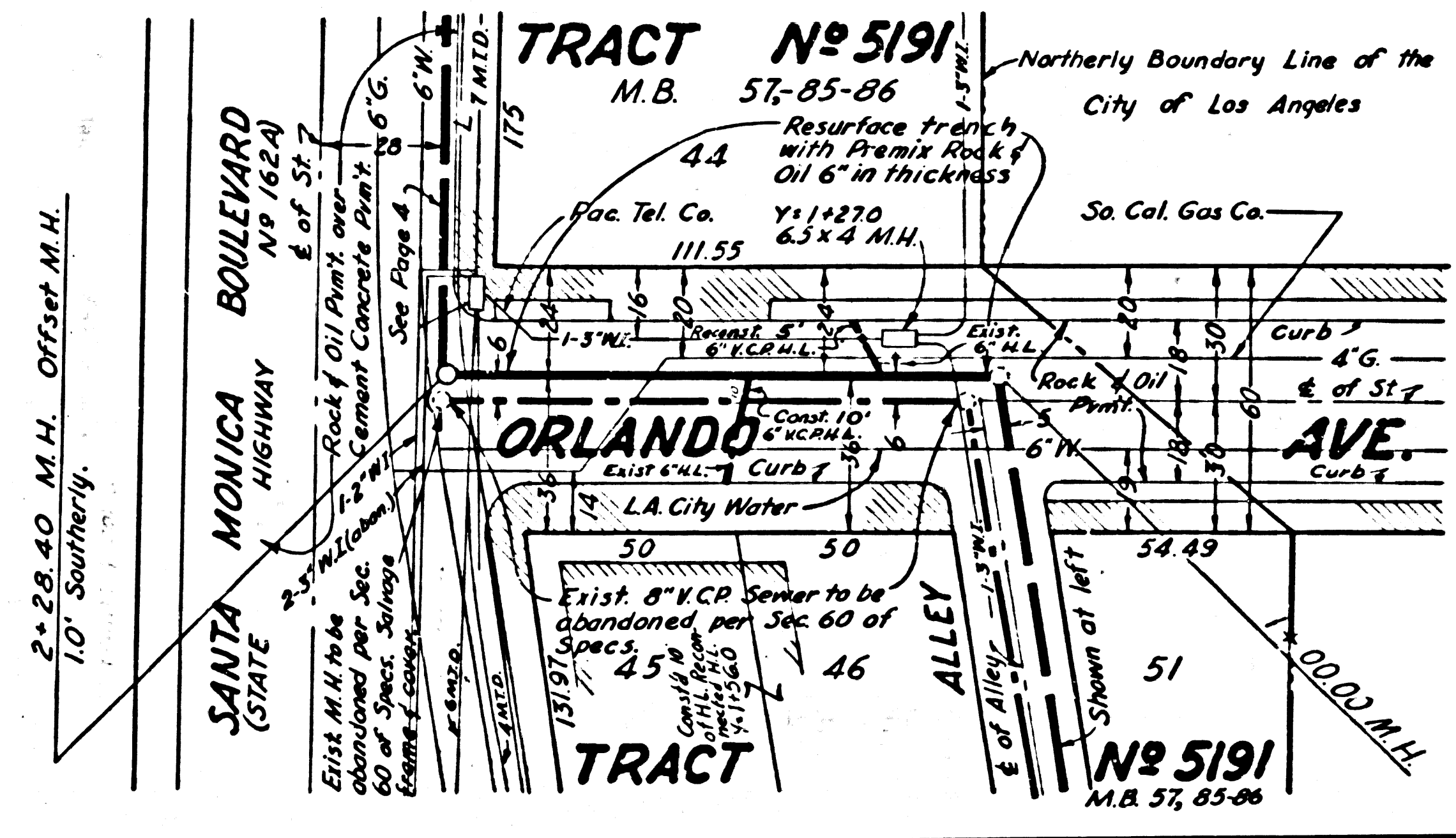
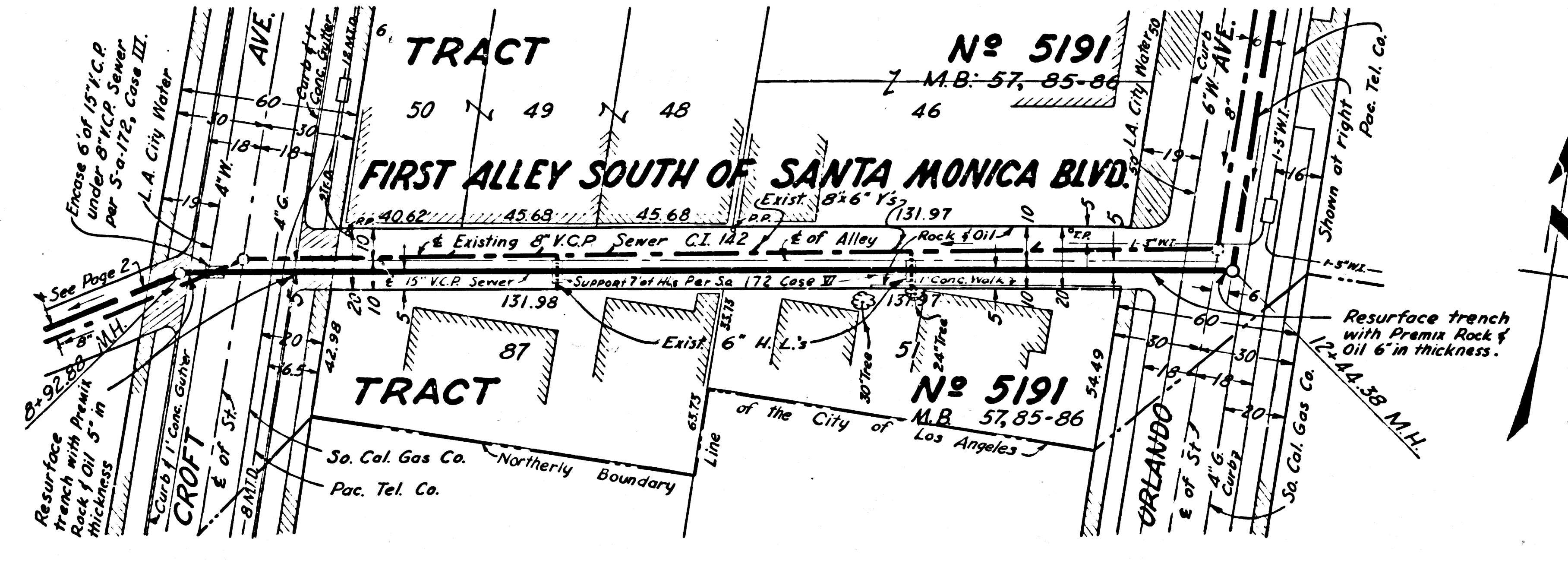
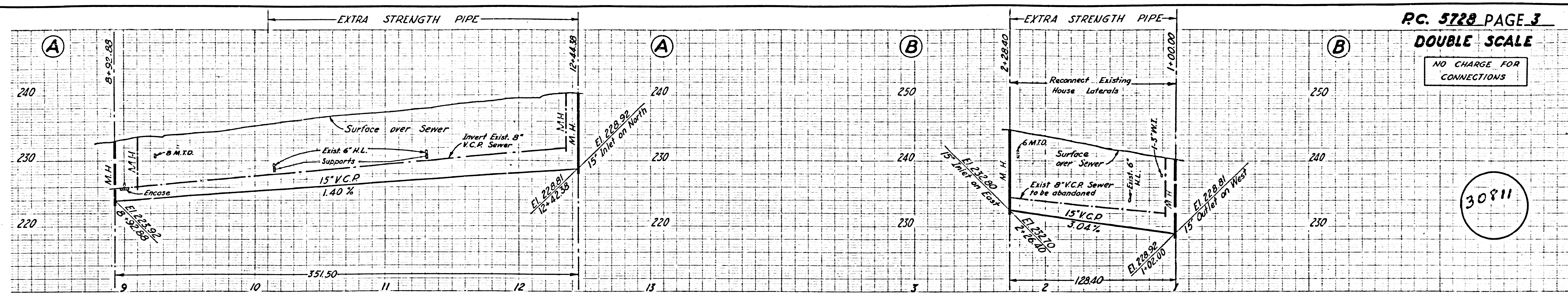
30810





NO CHARGE FOR CONNECTIONS

30811



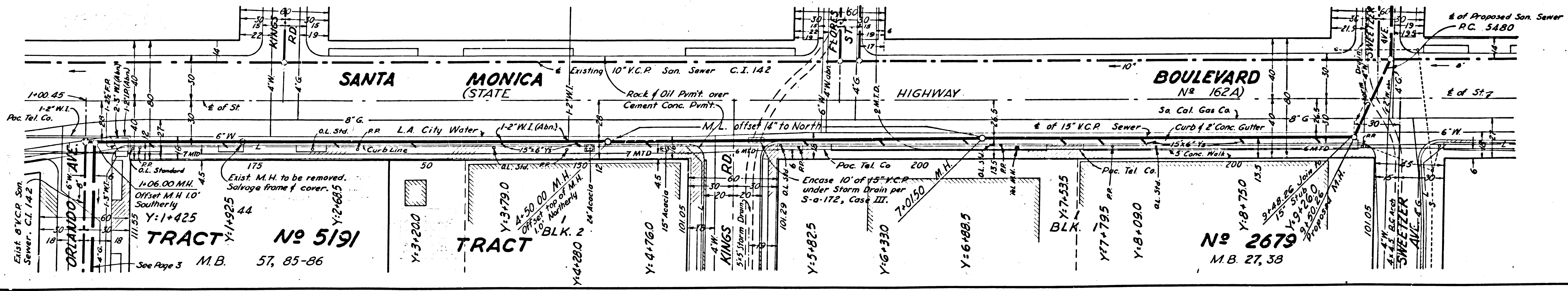
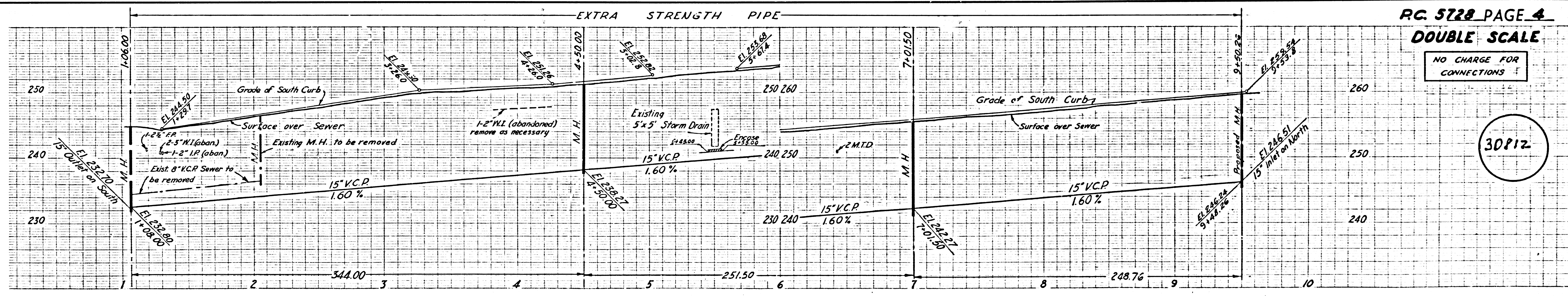
Trim Line

Trim Line

UG Chkd. 3-8-61 RA

NO CHARGE FOR CONNECTIONS

30812



Trim Line

Trim Line

UG Chkd. 3-8-61 RA