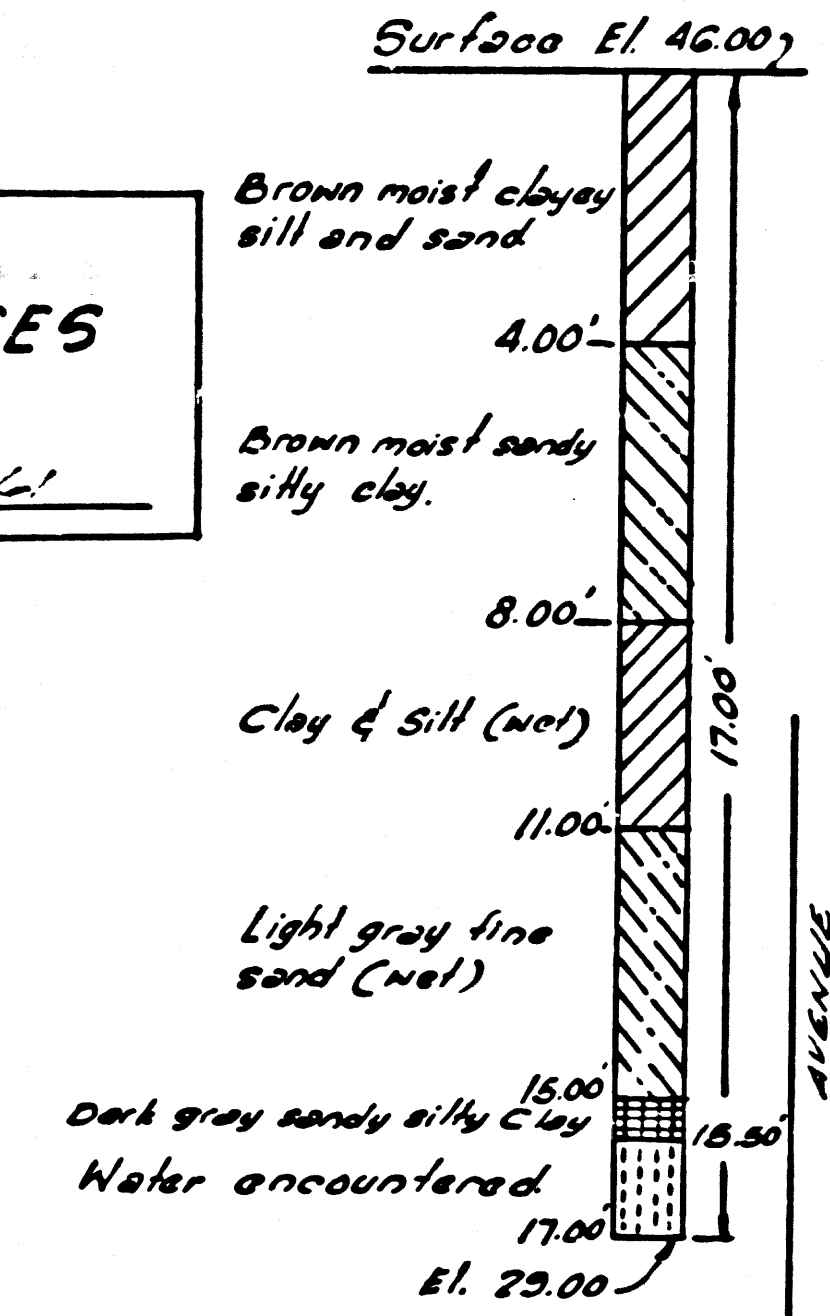
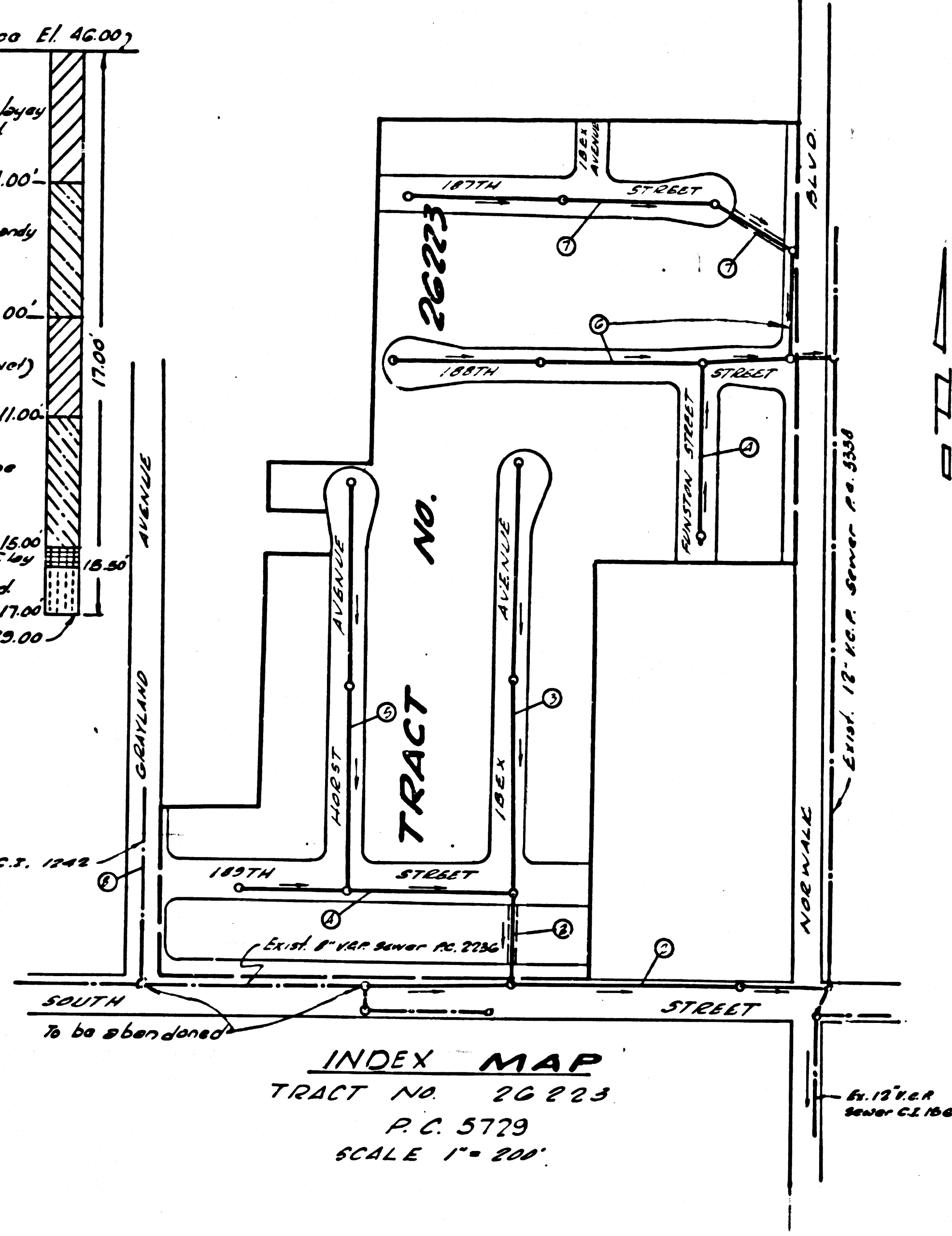


TEST HOLE
LOT 40 1-17-1961



CONNECTION CHARGES
AS INDICATED
Raymond May 3-27-61

BENCH MARK
BY 3410 E.L. 44.701
LOT IN N.E. COR. COR. STAB
TO HOUSE #12202 SOUTH STREET AT
S.E. COR. WARWICK BLDG & SOUTH ST.
ARTESIA QUAD 1960



ARTESIA BLDG. DIST. NO. 409

PROFILE ALIGNMENT AND GRADE OF
SANITARY SEWERS PAGE 1

TO BE CONSTRUCTED IN
TRACT NO. 26223

PRIVATE CONTRACT NO. 5729

W.S. 33
4 SHEETS, 8 PAGES

SCALE: VERT. 1" = 4'
HORIZ. 1" = 40'
NOV. 1960

PREPARED IN THE OFFICES OF
BARCLAY-PEARSON CO., INC.
By: Edward J. Pearson
REG. C. E. NO. 2723

30747

FOR LEGEND SEE PLAN NO. S-A-64

NOTE:
GRADES TO WHICH THIS IMPROVEMENT IS TO BE CONSTRUCTED ARE SHOWN ON PLANS AND PROFILES. GRADE POINTS FOR TOP OF CURBS, CENTER LINE OF STREETS, OR CENTER LINE OF ALLEYS ARE SHOWN BY CIRCLES ON PROFILES. AT ALL POINTS BETWEEN DESIGNATED POINTS THE GRADE SHALL BE ESTABLISHED SO AS TO CONFORM TO A STRAIGHT LINE DRAWN BETWEEN SAID DESIGNATED POINTS.
ELEVATIONS ARE IN FEET ABOVE U.S.C. & G.S. SEA LEVEL DATUM OF 1929.
THIS DRAWING AND THE DATA HEREON ARE HEREBY MADE A PART OF THE SPECIFICATIONS.
WORK SHALL BE CONSTRUCTED ACCORDING TO SPECIFICATIONS ON FILE IN THE OFFICE OF THE CITY ENGINEER AND SHALL BE PROSECUTED ONLY IN THE PRESENCE OF THE CITY ENGINEER.
BEFORE WORK CAN BE STARTED, THE CONTRACTOR MUST OBTAIN A PERMIT TO EXCAVATE IN CITY STREETS FROM THE S.A. COUNTY ROAD DEPT., DISTRICT OFFICE NO. 4, AND MAKE A DEPOSIT WITH THE CITY ENGINEER 10% OF THE CONTRACT VALUE TO COVER THE COST OF CONSTRUCTION INSPECTION AND RECORD PLANS.
APPROVAL OF THIS PLAN BY THE CITY OF ARTESIA DOES NOT CONSTITUTE A REPRESENTATION AS TO THE ACCURACY OF THE LOCATION OR THE EXISTENCE OR NON-EXISTENCE OF ANY UNDERGROUND UTILITY PIPE, OR STRUCTURE WITHIN THE LIMITS OF THIS PROJECT. THIS NOTE APPLIES TO ALL PAGES.
IF WORK IS TO BE DONE IN A STATE HIGHWAY, A PERMIT MUST BE OBTAINED FROM THE STATE OF CALIFORNIA, DIVISION OF HIGHWAYS, 126 SOUTH SPRING STREET.

CITY OF ARTESIA, CALIFORNIA

APPROVED, JOHN A. LAMBE, CITY ENGINEER APPROVED, C.R. COMPTON, CHIEF ENGINEER
TO SAN. DIST. NO. 19

BY: C.E. Pearson, ASST. SANITATION ENGINEER
Checked by: R.E. Perkins, 3-29-61
OFFICE OF CITY ENGINEER, REG. C. E. NO. 11636

SUBMITTED BY: John L. J. J. 3-27-61
LOS CERRITOS REGIONAL ENGINEER C.S. 9871

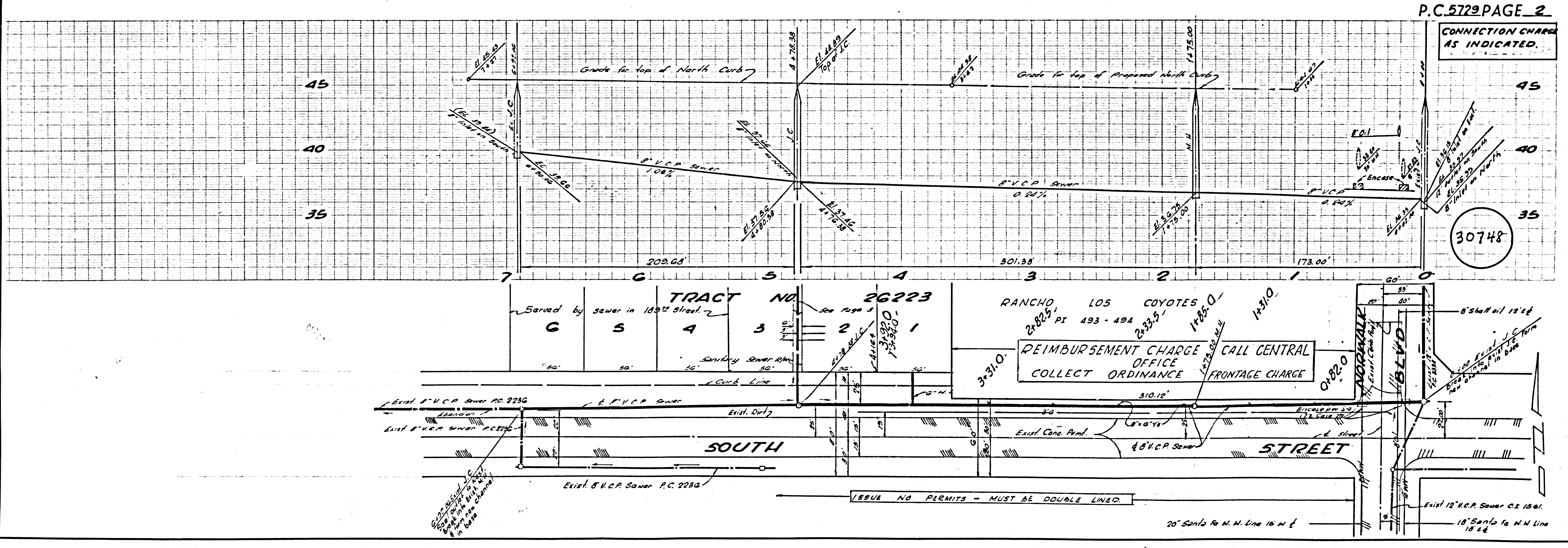
- 1. PROVIDE STAKES ON THE PROPERTY LINE OR PROPERTY LINES PRODUCED AT RIGHT ANGLES TO THE SEWER LINE AT THE CENTER LINE OF EACH MANHOLE.
- 2. NO REPRESENTATIVE OF THE CITY ENGINEER WILL SURVEY OR LAY OUT ANY PORTION OF THE WORK.
- 3. THE OWNER OR HIS AUTHORIZED REPRESENTATIVE SHALL FURNISH THE CITY ENGINEER WITH GRADE SHEETS AND STATIONING FOR ALL HOUSE LATERALS AND Y BRANCHES AND SHALL PROVIDE STAKES FOR THEM AT THEIR PROPER LOCATIONS, WITH STATIONING PLAINLY MARKED. ANY CHANGE IN LOCATION SHALL BE REQUESTED IN WRITING BY THE OWNER OR HIS REPRESENTATIVE.
- 4. THE PRIVATE ENGINEER SHALL FURNISH THE HOUSE LATERAL DEPTH AT THE PROPERTY LINE BELOW THE TOP OF CURB ELEVATION FOR EACH HOUSE LATERAL ON THE GRADE SHEET.
- 5. NO REVISIONS SHALL BE MADE IN THESE PLANS WITHOUT THE APPROVAL OF THE CITY ENGINEER.
- 6. USE STANDARD MANHOLE FRAMES AND COVERS, S-1112A.
- 7. USE STANDARD STRENGTH PIPE.
- 8. USE "WEDGE LOCK" OR "SPREAD SEAL" FOR ALL V.C.P. JOINTS PER SPEC., SEC. 92 & 98.
- 9. RESURFACE ALL TRENCH WITHIN PAVED AREA TO MEET L.A. COUNTY ROAD DEPT. OR CALIF. STATE HIGHWAY REQUIREMENTS IN ACCORDANCE WITH PERMITS.
- 10. ENCASE FOUR FEET OF SEWER AT POINTS OF INTERFERENCE WITH POLES, CASE III, S-1172.
- 11. HOUSE LATERALS TO BE CONSTRUCTED WITH INVERTS AT PROPERTY LINE 6 FEET BELOW CURB GRADE EXCEPT AS NOTED.
- 12. ALL STRUCTURES SHALL BE BRICK SEWER STRUCTURES, S-1104.
- 13. FOR ALLOWABLE LEAKAGE TEST USE FORMULA NO. 1, SPEC'S, SEC. 54.
- 14. MANHOLE TOPS IN UNIMPROVED RIGHTS-OF-WAY TO BE SIX INCHES ABOVE FINISHED GRADE.
- 15. THE CONTRACTOR SHALL NOTIFY THE CONSTRUCTION DIVISION BY TELEPHONE, MADISON 3-4747, EXT. 8547 AT LEAST TWENTY-FOUR HOURS BEFORE STARTING ANY WORK UNDER THIS CONTRACT.
- 16. All the locations shown for existing structures have been taken from records and their correctness and completeness is in no way guaranteed. It shall be the contractor's responsibility to locate all underground lines of every nature whether shown on plans or not. The contractor shall bear the total expense of repair to any line damaged by any operation in connection with the prosecution of this work.
- 17. Standard Specifications dated Oct. 10, 1960, on file in the City apply to the construction of this project.

NO CONNECTIONS FOR THE DISPOSAL OF INDUSTRIAL WASTES SHALL BE MADE TO SEWERS SHOWN ON THESE DRAWINGS WITHOUT WRITTEN PERMISSION FROM THE CHIEF ENGINEER AND GENERAL MANAGER OF THE COUNTY SANITATION DISTRICTS.

P.C. 5729 PAGE 2

CONNECTION CHARGES AS INDICATED

30748

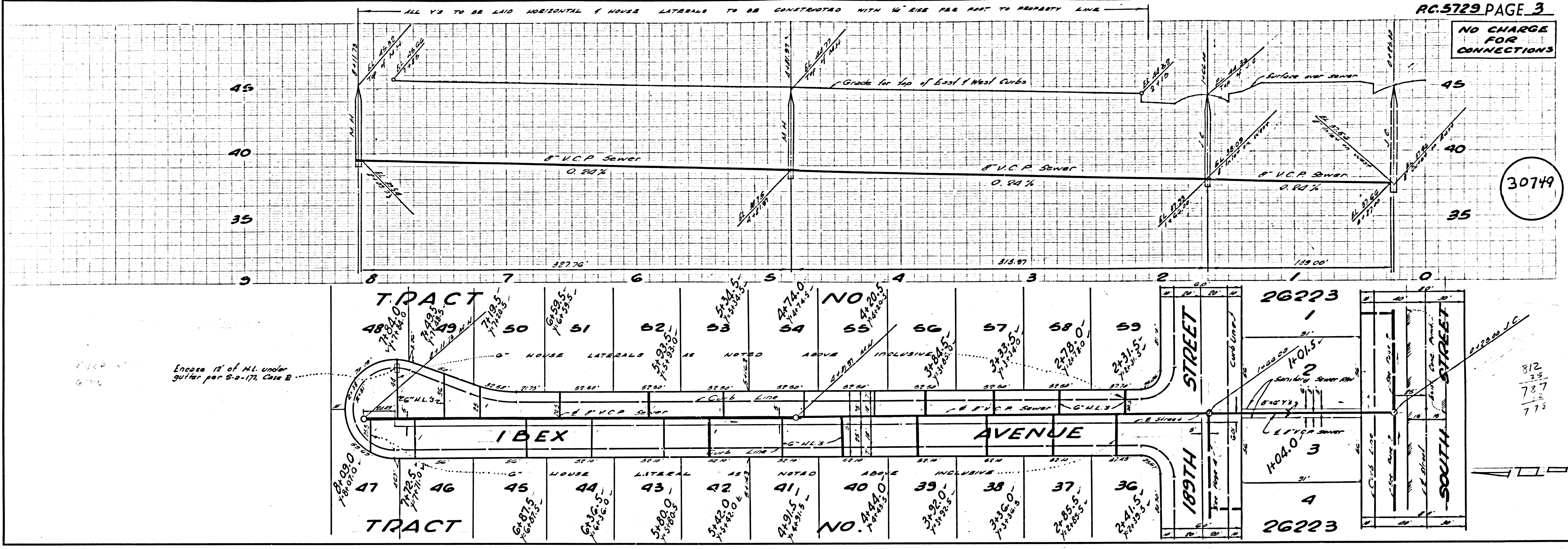


REIMBURSEMENT CHARGE
OFFICE
COLLECT ORDINANCE
CALL CENTRAL
FRONTAGE CHARGE

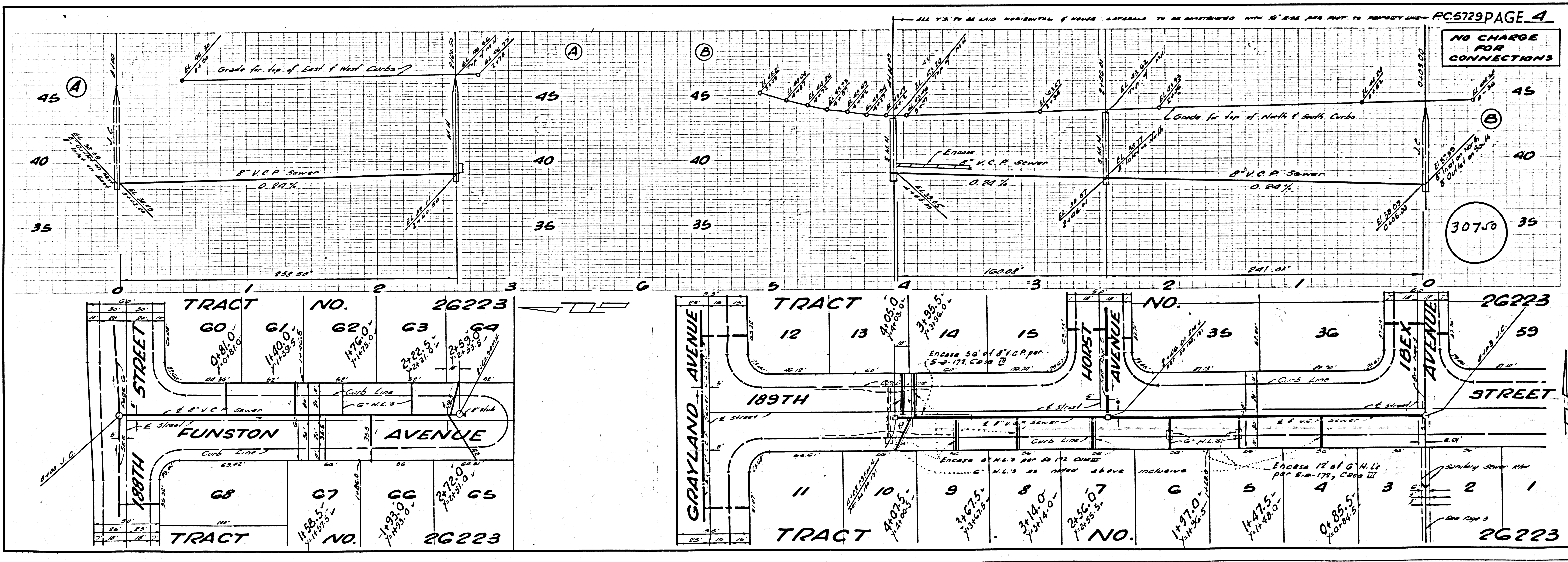
ISSUE NO PERMITS - MUST BE DOUBLE LINED.

20' Santa Fe N.N. Line 16' W of

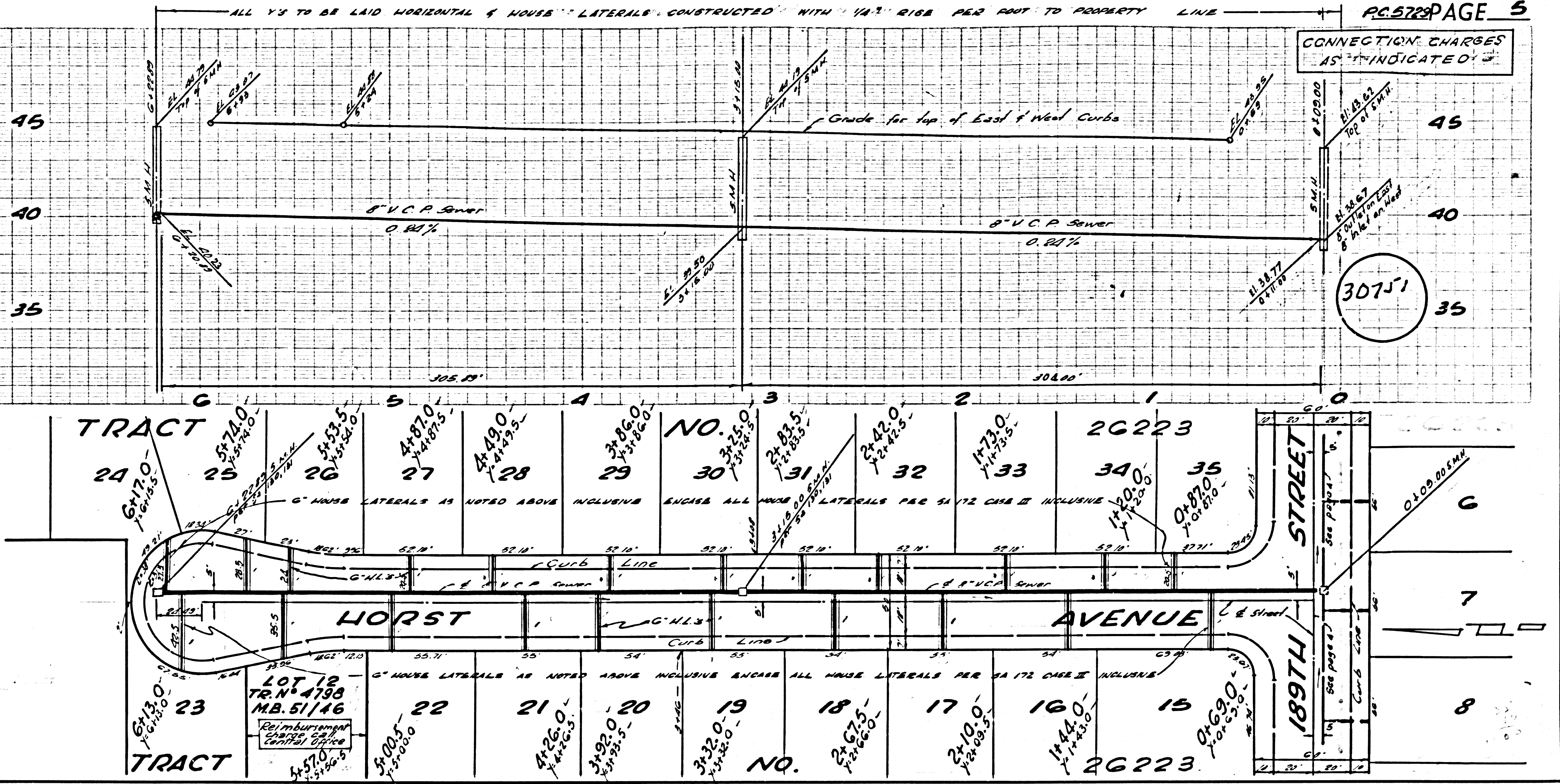
NO CHARGE FOR CONNECTIONS



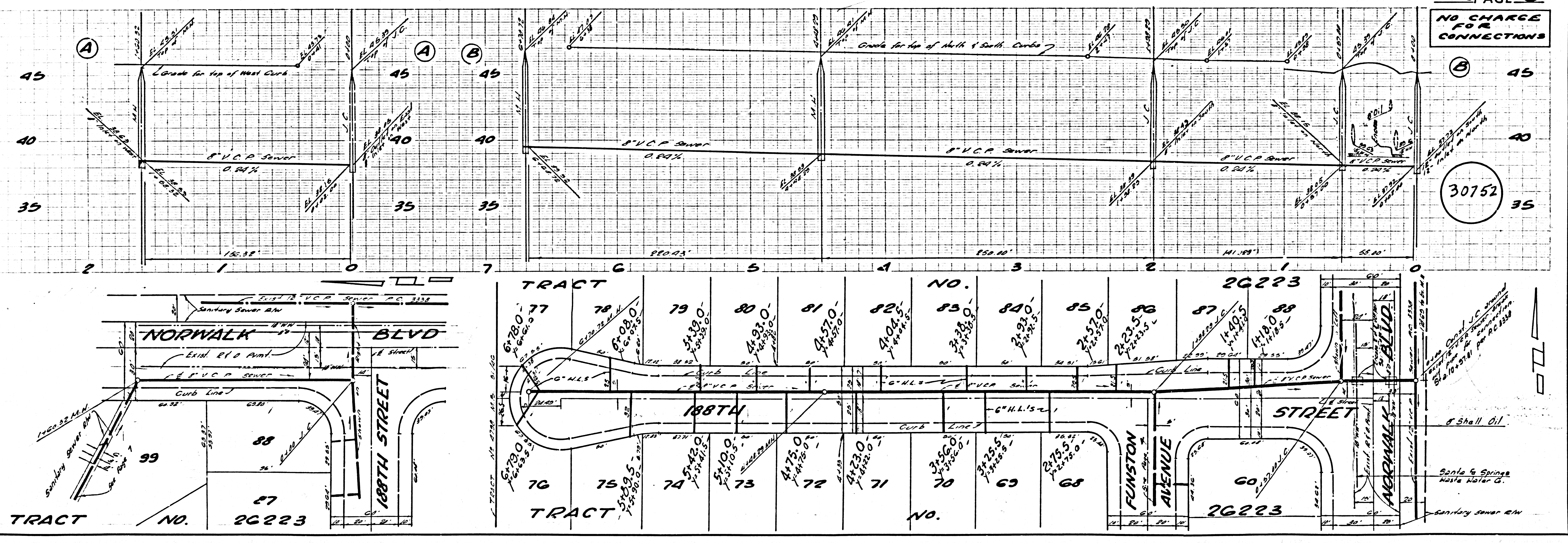
NO CHARGE FOR CONNECTIONS



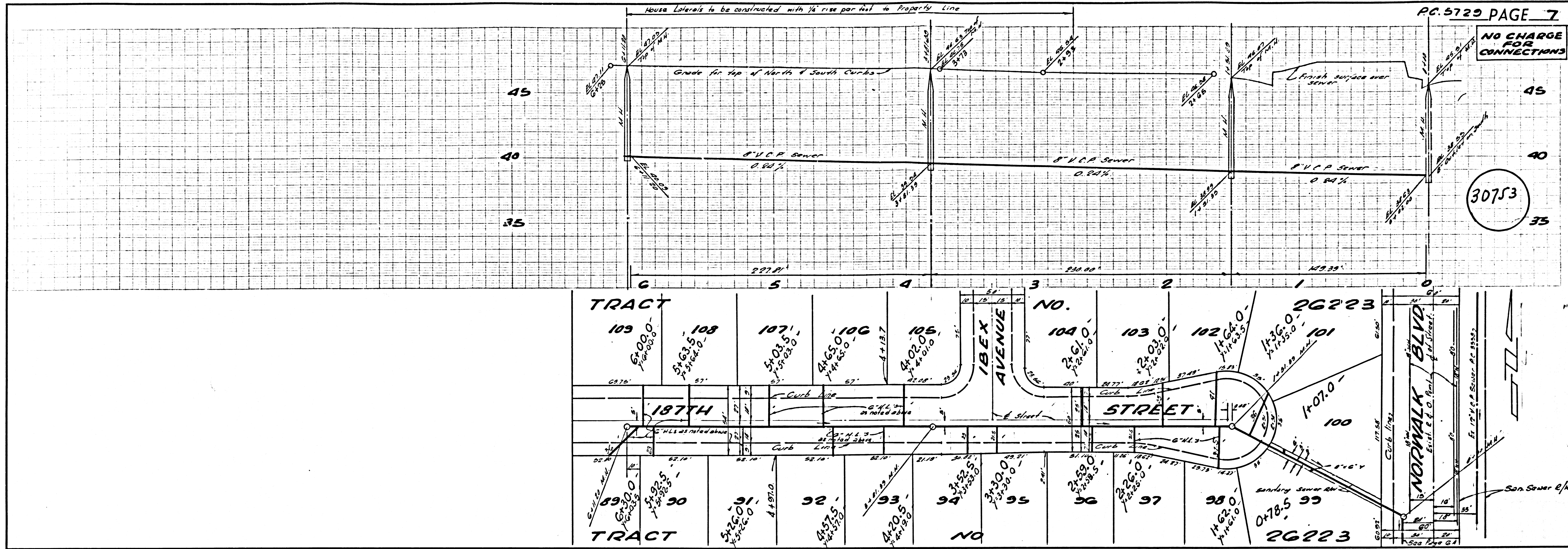
CONNECTION CHARGES AS INDICATED



NO CHARGE FOR CONNECTIONS



NO CHARGE FOR CONNECTIONS



NO CHARGE FOR CONNECTIONS

