

SAN DIMAS BLDG. DIST. NO. 10

PROFILE ALIGNMENT AND GRADE OF P.C. 5733
 SANITARY SEWERS PAGE 1
 TO BE CONSTRUCTED IN J.N.0354.91
 CYPRESS AVENUE
 SANITARY SEWER
 RIGHT OF WAY

PRIVATE CONTRACT NO. 5733

W.S. 47
 2 SHEETS; 3 PAGES

SCALE: HORIZ. 1" = 40' VERT. 1" = 4'
 NOVEMBER, 1960 30307

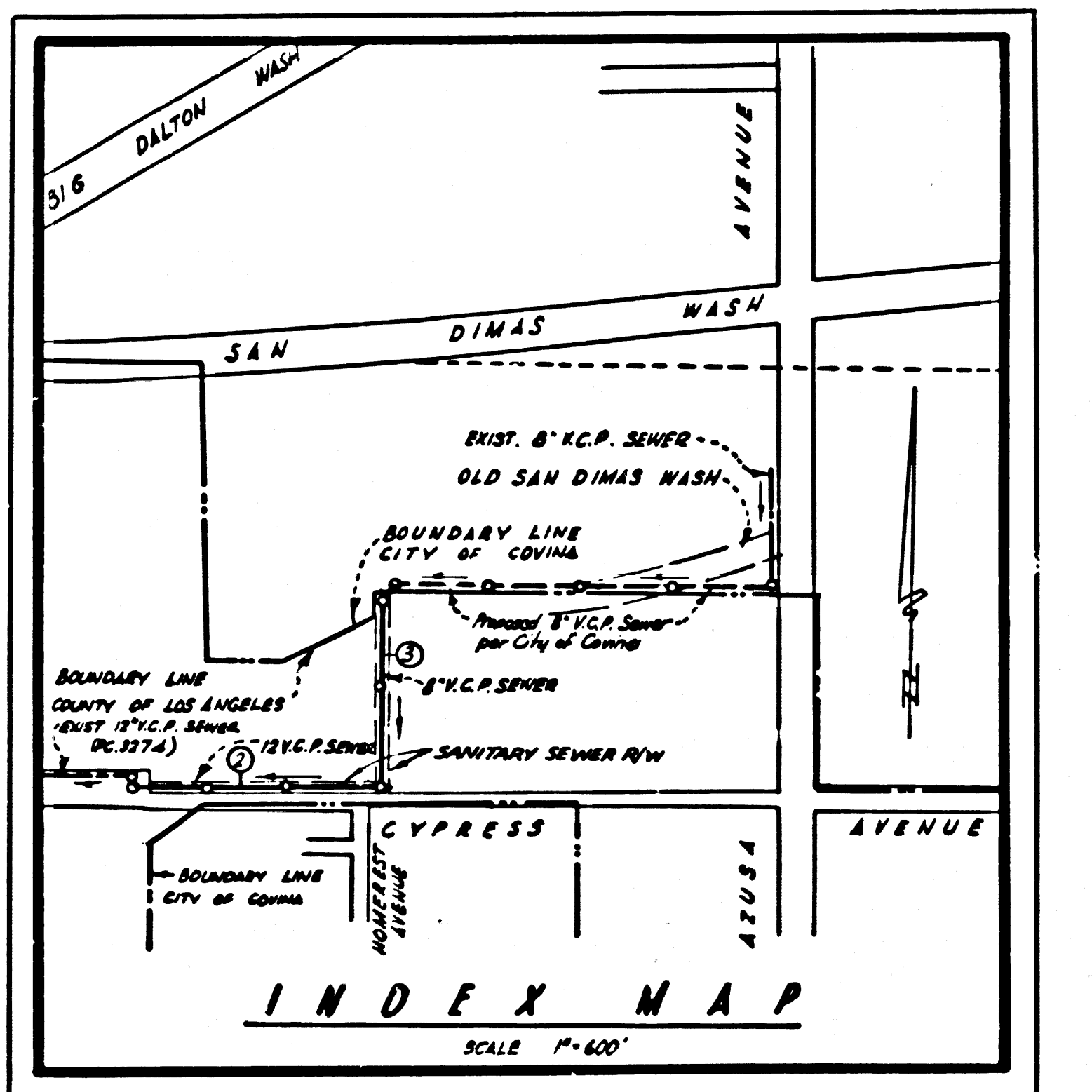
PREPARED IN THE OFFICES OF
 WALSH-FORRETT CIVIL ENGINEERS, INC.

BY: *John A. Lambie*
 REG. C. E. NO. 6371

FOR LEGEND SEE PLAN NO. S-A-64

BENCH MARK: S.D. 122
 600' Spk. in south curb 1077. E/O
 West end curb 425' N/O Memorial Avenue.
 Elev. 476.184
 F. B. 2505 page 18

- NOTES
- PROVIDE STAKES ON THE PROPERTY LINE OR PROPERTY LINES PRODUCED AT RIGHT ANGLES TO THE SEWER LINE AT THE CENTER LINE OF EACH MANHOLE.
 - NO REPRESENTATIVE OF THE COUNTY ENGINEER WILL SURVEY OR LAYOUT ANY PORTION OF THE WORK.
 - THE OWNER OR HIS AUTHORIZED REPRESENTATIVE SHALL FURNISH THE COUNTY ENGINEER WITH GRADE SHEETS AND STATION FOR ALL HOUSE LATERALS AND Y BRANCHES AND SHALL PROVIDE STAKES FOR THEM AT THEIR PROPER LOCATIONS WITH STATIONING PLAINLY MARKED. ANY CHANGE IN LOCATION SHALL BE REQUESTED IN WRITING BY THE OWNER OR HIS REPRESENTATIVE.
 - NO REVISIONS SHALL BE MADE IN THESE PLANS WITHOUT THE APPROVAL OF THE COUNTY ENGINEER.
 - USE STANDARD MANHOLE FRAMES AND COVERS, S.A.117.
 - USE STANDARD STRENGTH PIPE EXCEPT AS NOTED.
 - USE CEMENT MORTAR OR "SPEED SEAL" FOR ALL HYDRANT CLAY PIPE JOINTS PER SPECS. SEC. 36.6.4.8
 - RESURFACE ALL TRENCH WITHIN PAVED AREA TO MEET L. A. COUNTY ROAD DEPT. OR CALIF. STATE HIGHWAY DEPT. REQUIREMENTS IN ACCORDANCE WITH PERMITS.
 - ENGAGE FOUR FEET OF SEWES AT POINTS OF INTERFERENCE WITH POLES, S.A. 172 CASR III
 - HOUSE LATERALS TO BE CONSTRUCTED WITH INVERTS AT PROPERTY LINE 6 FEET BELOW CURB GRADE EXCEPT AS NOTED.
 - ALL STRUCTURES SHALL BE BRICK SEWER STRUCTURES, S.A.104.
 - FOR ALLOWABLE LEAKAGE TEST USE FORMULA NO. 1 SPECS., SEC. 36.
 - MANHOLE TOPS IN UNIMPROVED RIGHTS-OF-WAY TO BE 4" ABOVE FINISHED GRADE.
 - THE PRIVATE ENGINEER SHALL FURNISH THE HOUSE LATERAL DEPTH AT THE PROPERTY LINE BELOW THE TOP OF CURB ELEVATION FOR EACH HOUSE LATERAL ON THE GRADE SHEET.
 - THE CONTRACTOR SHALL NOTIFY THE CONSTRUCTION DIVISION BY TELEPHONE, MAIL OR 3-DAY, BUT 8:00 A.M., AT LEAST THIRTY FOUR HOURS BEFORE STARTING ANY WORK UNDER THIS CONTRACT.
 - STANDARD SPECIFICATIONS DATED OCT. 10, 1960, APPLY IN THE CONSTRUCTION OF THIS PROJECT.
 - IT SHALL BE THE RESPONSIBILITY OF THE CONTRACTOR TO LOCATE ALL UTILITIES OF EVERY NATURE WHETHER SHOWN HEREON OR NOT AND PROTECT THEM FROM DAMAGE. THE CONTRACTOR SHALL BEAR THE TOTAL EXPENSE OF REPAIR OR REPLACEMENT OF SAID UTILITIES DAMAGED BY OPERATIONS IN CONNECTION WITH THE PRODUCTION OF THE WORK.



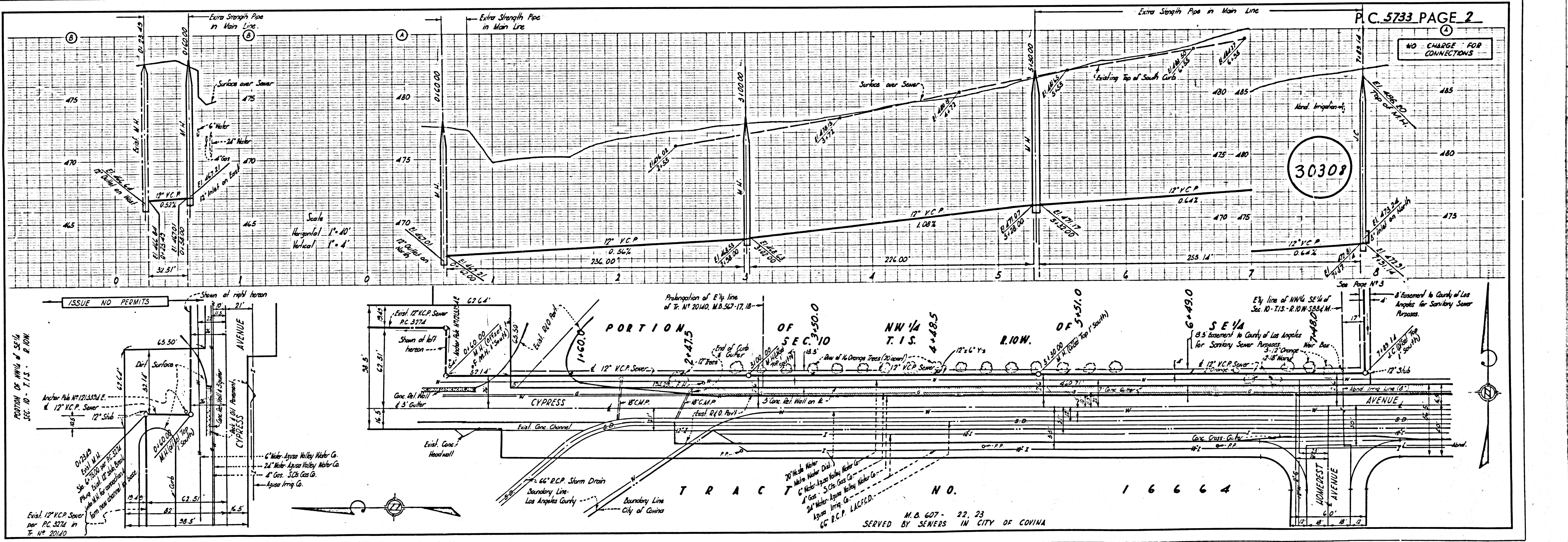
SPECIAL NOTE: The 24\"/>

NO CONNECTIONS FOR THE DISPOSAL OF INDUSTRIAL WASTES SHALL BE MADE TO SEWERS SHOWN ON THESE DRAWINGS WITHOUT WRITTEN PERMISSION FROM THE CHIEF ENGINEER AND GENERAL MANAGER OF THE COUNTY SANITATION DISTRICTS.

NO CHARGE FOR CONNECTIONS
W.C. Poindexter 1-13-61

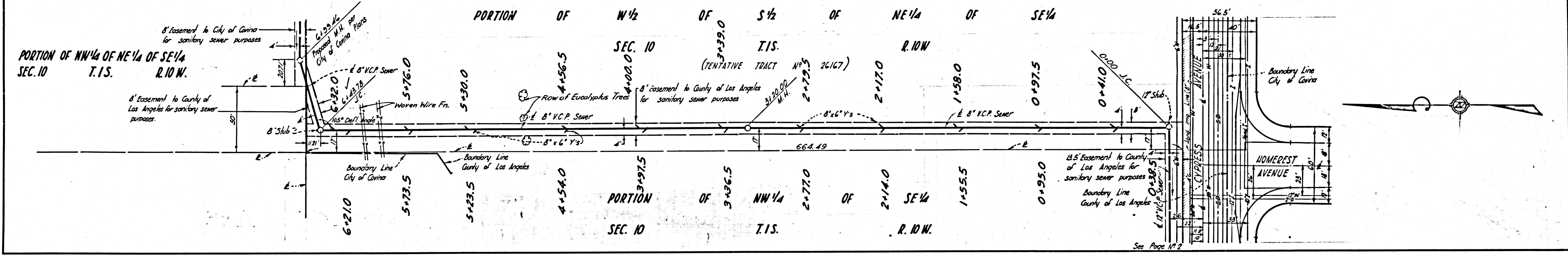
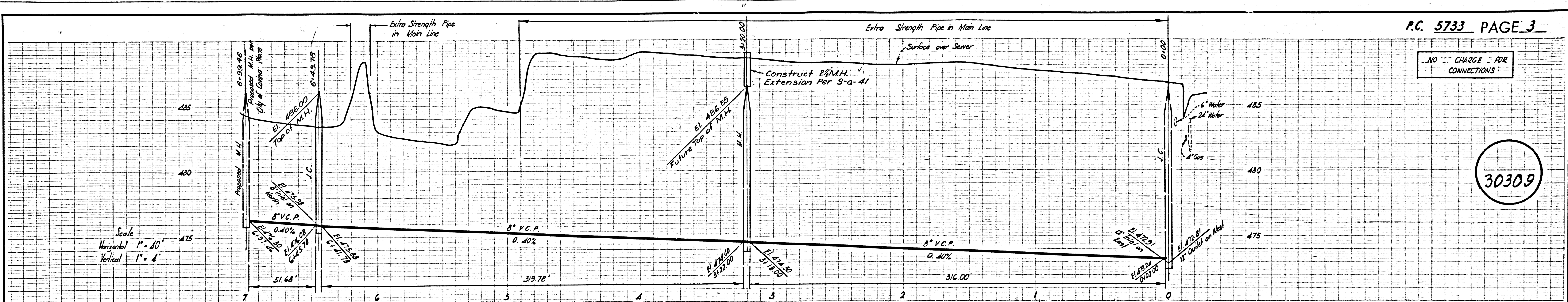
CITY OF COVINA
 APPROVED: *Patricia A. Vogel* DATE 12/5/60
 CITY ENGINEER

COUNTY OF LOS ANGELES, CALIFORNIA
 APPROVED, JOHN A. LAMBIE, COUNTY ENGINEER
 APPROVED, C.R. COMPTON, CHIEF ENGINEER
 BY: *W.C. Poindexter* ASST. SANITATION ENGINEER
 BY: *W.C. Poindexter* OFFICE ENGINEER
 CHECKED BY: *B.F. Worley* 1-17-61
 OFFICE OF COUNTY ENGINEER, REG. C. E. NO. 11636
 SUBMITTED: *W.C. Poindexter* SAN DIMAS REGIONAL ENGINEER



NO CHARGE FOR CONNECTIONS

30309



30309