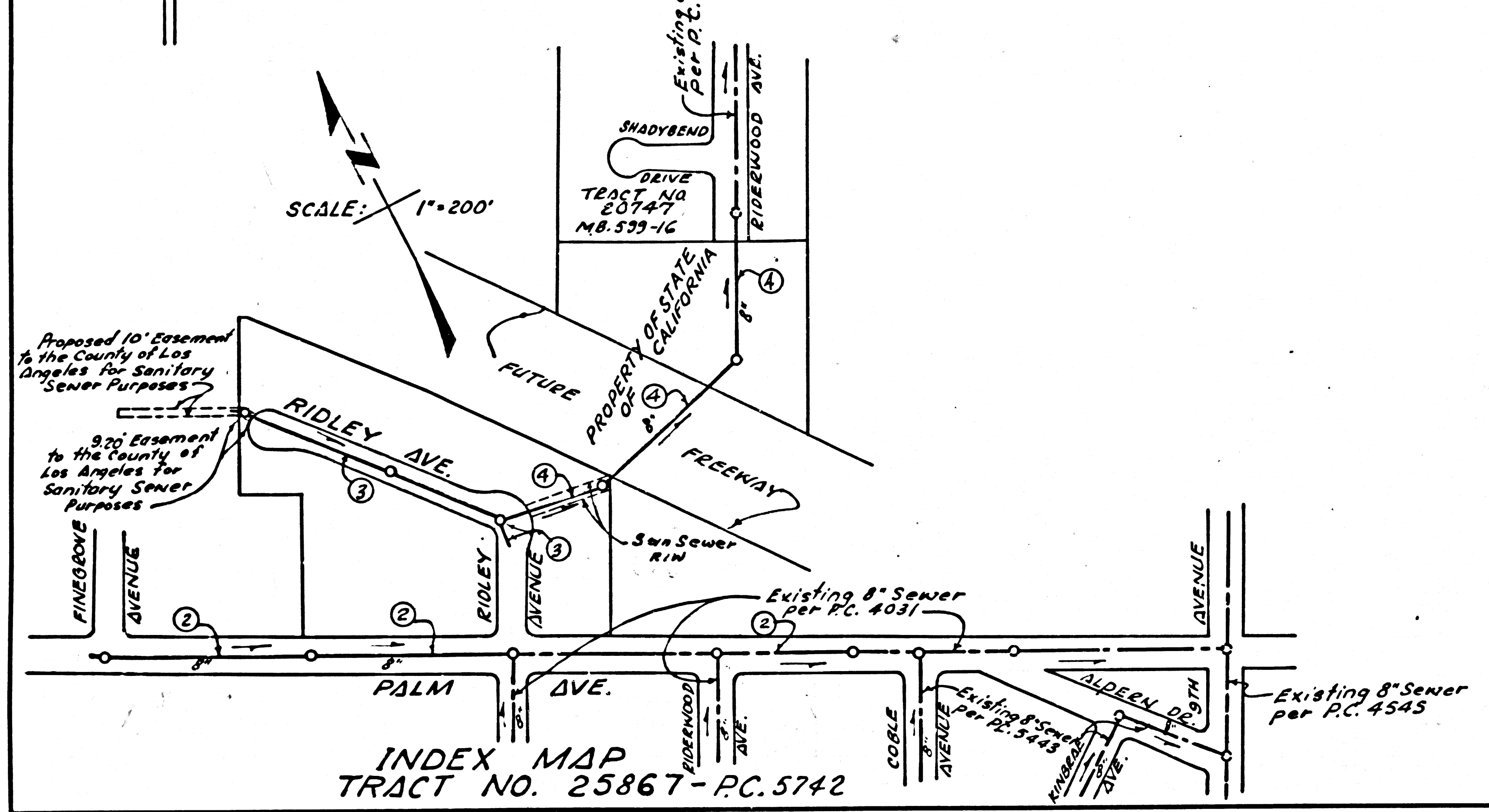


TRACT NO. 25867  
PRIVATE CONTRACT NO. 5742

W.S. 37  
2 SHEETS; 4 PAGES  
SCALE: VERT. 1"=4'  
HORIZ. 1"=40'  
DECEMBER, 1960  
PREPARED IN THE OFFICES OF  
ROSENTHAL ENGINEERING COMPANY  
BY: *[Signature]*  
REG. C. E. NO. 8805  
FOR LEGEND SEE PLAN NO. S-A-44

BENCH MARK:  
S.G. 1592  
L. & T. near N.W. corner  
of Conc. Drive to house No.  
14606 Palm Ave. at S.E. Cor. 7th Ave. 100'  
E. and 27 1/2 S. of centerline  
intersection. Elev. 400.086  
COVINA QUAD.



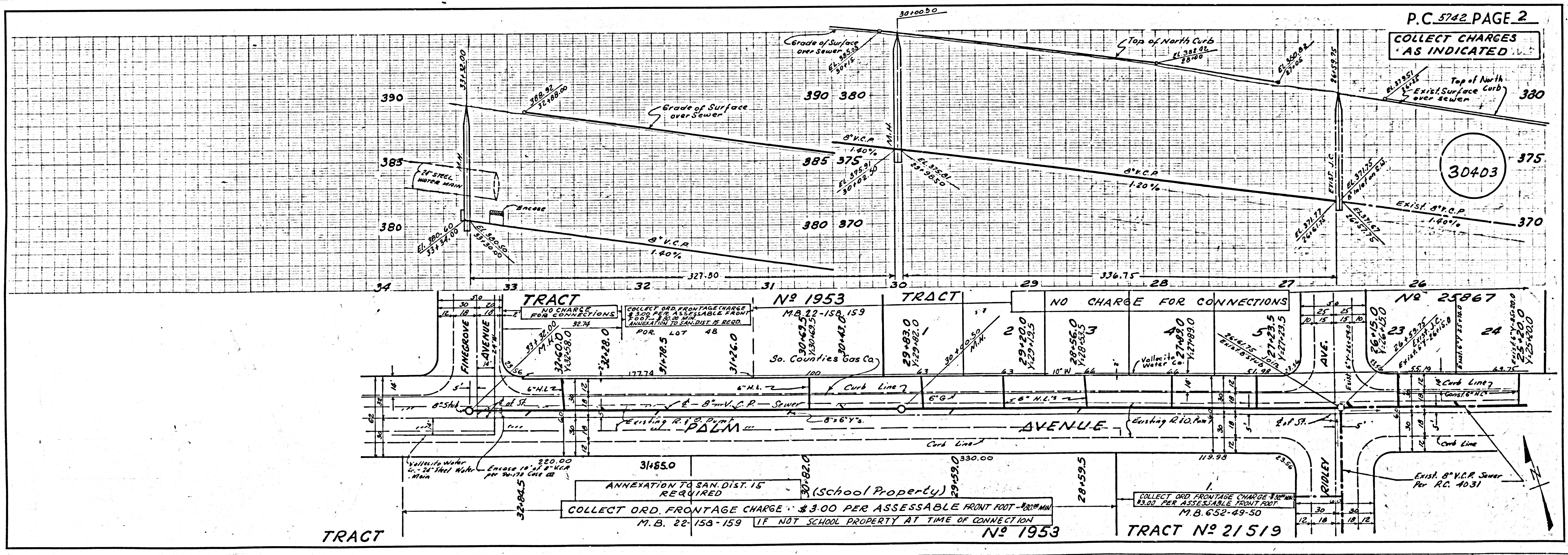
- 1. PROVIDE STAKES ON THE PROPERTY LINE OR PROPERTY LINES PRODUCED AT RIGHT ANGLES TO THE SEWER LINE AT THE CENTER LINE OF EACH MANHOLE.
- 2. NO REPRESENTATIVE OF THE COUNTY ENGINEER WILL SURVEY OR LAY OUT ANY PORTION OF THE WORK.
- 3. THE OWNER OR HIS AUTHORIZED REPRESENTATIVE SHALL FURNISH THE COUNTY ENGINEER WITH GRADE SHEETS AND STATIONING FOR ALL HOUSE LATERALS AND Y BRANCHES AND SHALL PROVIDE STAKES FOR THEM AT THEIR PROPER LOCATIONS WITH STATIONING PLAINLY MARKED. ANY CHANGE IN LOCATION SHALL BE REQUESTED IN WRITING BY THE OWNER OR HIS REPRESENTATIVE.
- 4. THE PRIVATE ENGINEER SHALL FURNISH THE HOUSE LATERAL DEPTH AT THE PROPERTY LINE BELOW THE TOP OF CURB ELEVATION FOR EACH HOUSE LATERAL ON THE GRADE SHEET.
- 5. NO REVISIONS SHALL BE MADE IN THESE PLANS WITHOUT THE APPROVAL OF THE COUNTY ENGINEER.
- 6. USE STANDARD MANHOLE FRAMES AND COVERS, S-117.
- 7. USE STANDARD STRENGTH PIPE EXCEPT AS NOTED.
- 8. USE CEMENT MORTAR OR "WEDGE-LOCK" OR "SPEED-SEAL" FOR ALL V.C.P. JOINTS PER SPEC., SECS. 34 & 40.
- 9. RESURFACE ALL TRENCH WITHIN PAVED AREA TO MEET L.A. COUNTY ROAD DEPT. OR CALIF. STATE HIGHWAY REQUIREMENTS IN ACCORDANCE WITH PERMITS.
- 10. ENCASE FOUR FEET OF SEWER AT POINTS OF INTERFERENCE WITH POLES, CASE III, S-177.
- 11. HOUSE LATERALS TO BE CONSTRUCTED WITH INVERTS AT PROPERTY LINE 6 FEET BELOW CURB GRADE.
- 12. ALL STRUCTURES SHALL BE BRICK SEWER STRUCTURES, S-104.
- 13. FOR ALLOWABLE LEAKAGE TEST USE FORMULA NO. 1 SPEC., SEC. 34.
- 14. MANHOLE TOPS IN UNIMPROVED RIGHTS-OF-WAY TO BE SIX INCHES ABOVE FINISHED GRADE.
- 15. THE CONTRACTOR SHALL NOTIFY THE CONSTRUCTION DIVISION BY TELEPHONE, MADISON 9-4747, EXT. 8831 AT LEAST TWENTY-FOUR HOURS BEFORE STARTING ANY WORK UNDER THIS CONTRACT.
- 16. STANDARD SPECIFICATIONS DATED OCTOBER 10, 1950 APPLY IN THE CONSTRUCTION OF THIS PROJECT.

COLLECT CHARGES AS INDICATED.  
7/7/60

NOTE:  
Construction in State Property to be under Division of Highways Encroachment Permit No. 16822-197-80

NO CONNECTIONS FOR THE DISPOSAL OF INDUSTRIAL WASTES SHALL BE MADE TO SEWERS EXCEPT AS SHOWN IN DRAWINGS WITHOUT WRITTEN PERMISSION OF THE CHIEF ENGINEER AND GENERAL MANAGER OF THE COUNTY SANITATION DISTRICTS.

NOTE:  
GRADES TO WHICH THIS IMPROVEMENT IS TO BE CONSTRUCTED ARE SHOWN ON PLANS AND PROFILES. GRADE POINTS FOR TOP OF CURBS, CENTER LINE OF STREETS, OR CENTER LINE OF ALLEYS ARE SHOWN BY CIRCLES ON PROFILES. AT ALL POINTS BETWEEN DESIGNATED POINTS THE GRADE SHALL BE ESTABLISHED SO AS TO CONFORM TO A STRAIGHT LINE DRAWN BETWEEN SAID DESIGNATED POINTS.  
ELEVATIONS ARE IN FEET ABOVE U.S.C. & G.S. SEA LEVEL DATUM OF 1929.  
THIS DRAWING AND THE DATA HEREON ARE HEREBY MADE A PART OF THE SPECIFICATIONS.  
WORK SHALL BE CONSTRUCTED ACCORDING TO SPECIFICATIONS ON FILE IN THE OFFICE OF THE COUNTY ENGINEER AND SHALL BE PROSECUTED ONLY IN THE PRESENCE OF THE COUNTY ENGINEER.  
BEFORE WORK CAN BE STARTED THE CONTRACTOR MUST OBTAIN A PERMIT TO EXCAVATE IN COUNTY STREETS FROM THE L. A. COUNTY ROAD DEPT., DISTRICT OFFICE NO. 12, AND PAY A FEE TO THE COUNTY ENGINEER, ROOM 124 FAY AMERICAN BUILDING, 233 SO. BROADWAY SUFFICIENT TO COVER THE COST OF CONSTRUCTION INSPECTION AND RECORD PLANS.  
APPROVAL OF THIS PLAN BY THE COUNTY OF LOS ANGELES DOES NOT CONSTITUTE A REPRESENTATION AS TO THE ACCURACY OF THE LOCATION OF OR THE EXISTENCE OR NON-EXISTENCE OF ANY UNDERGROUND UTILITY PIPE, OR STRUCTURE WITHIN THE LIMITS OF THIS PROJECT. THIS NOTE APPLIES TO ALL PAGES.  
IF WORK IS TO BE DONE IN A STATE HIGHWAY, A PERMIT MUST BE OBTAINED FROM THE STATE OF CALIFORNIA, DIVISION OF HIGHWAYS, 120 SOUTH SPRING STREET.  
COUNTY OF LOS ANGELES, CALIFORNIA  
APPROVED, JOHN A. LAMBIE, COUNTY ENGINEER  
APPROVED, G.R. COMPTON, CHIEF ENGINEER  
BY: *[Signature]* ASST. SANITATION ENGINEER  
BY: *[Signature]* OFFICE ENGINEER  
CHECKED BY: *[Signature]*  
OFFICE OF COUNTY ENGINEER, REG. C. E. NO. 2446



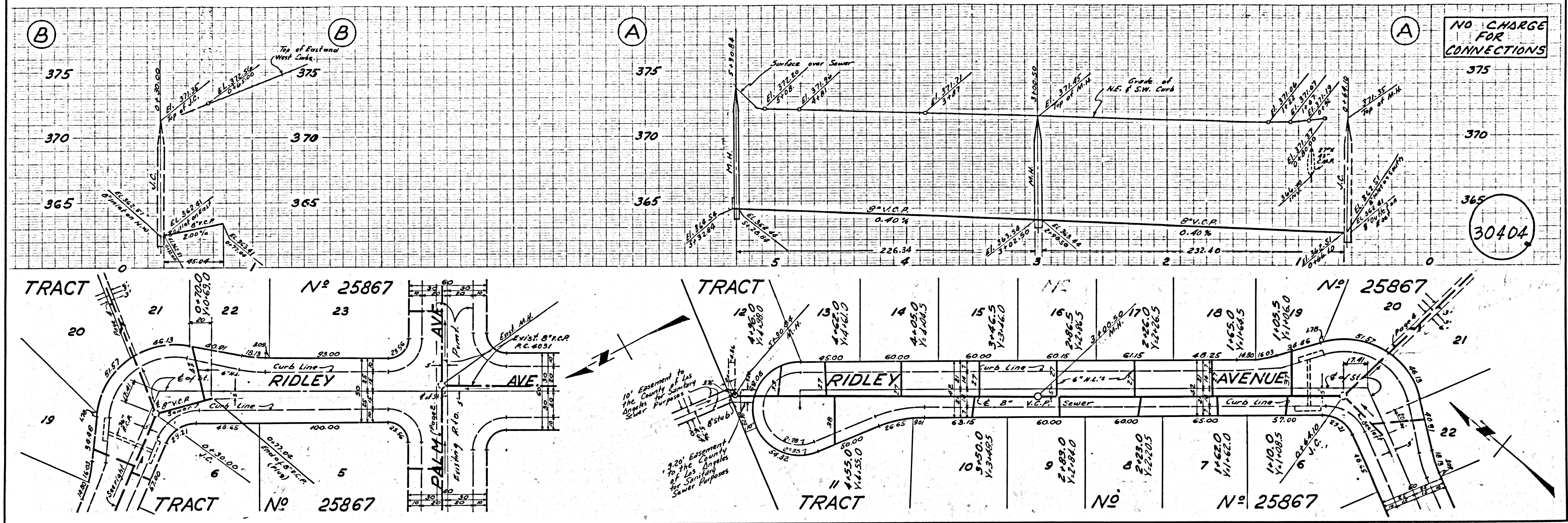
P.C. 5742 PAGE 2  
COLLECT CHARGES AS INDICATED

30403

TRACT	NO. 1953	TRACT	NO. 25867	TRACT	NO. 21519					
34	33	32	31	30	29	28	27	26	25	24
NO CHARGE FOR CONNECTIONS										
COLLECT ORD. FRONTAGE CHARGE \$3.00 PER ASSESSABLE FRONT FOOT										
M.B. 22-156-159 IF NOT SCHOOL PROPERTY AT TIME OF CONNECTION										
ANNEXATION TO SAN. DIST. 15 REQUIRED										
M.B. 652-49-50										

NO CHARGE FOR CONNECTIONS

30404



NO CHARGE FOR CONNECTIONS

30405

