

LAKWOOD BLDG. DIST. NO. 4.3

PROFILE ALIGNMENT AND GRADE OF P.C. 5745  
 SANITARY SEWERS PAGE 1  
 TO BE CONSTRUCTED IN JN 0355.01

TRACT NO. 24859 30933

PRIVATE CONTRACT NO. 5745

W.S. 31

11 SHEETS, 19 PAGES

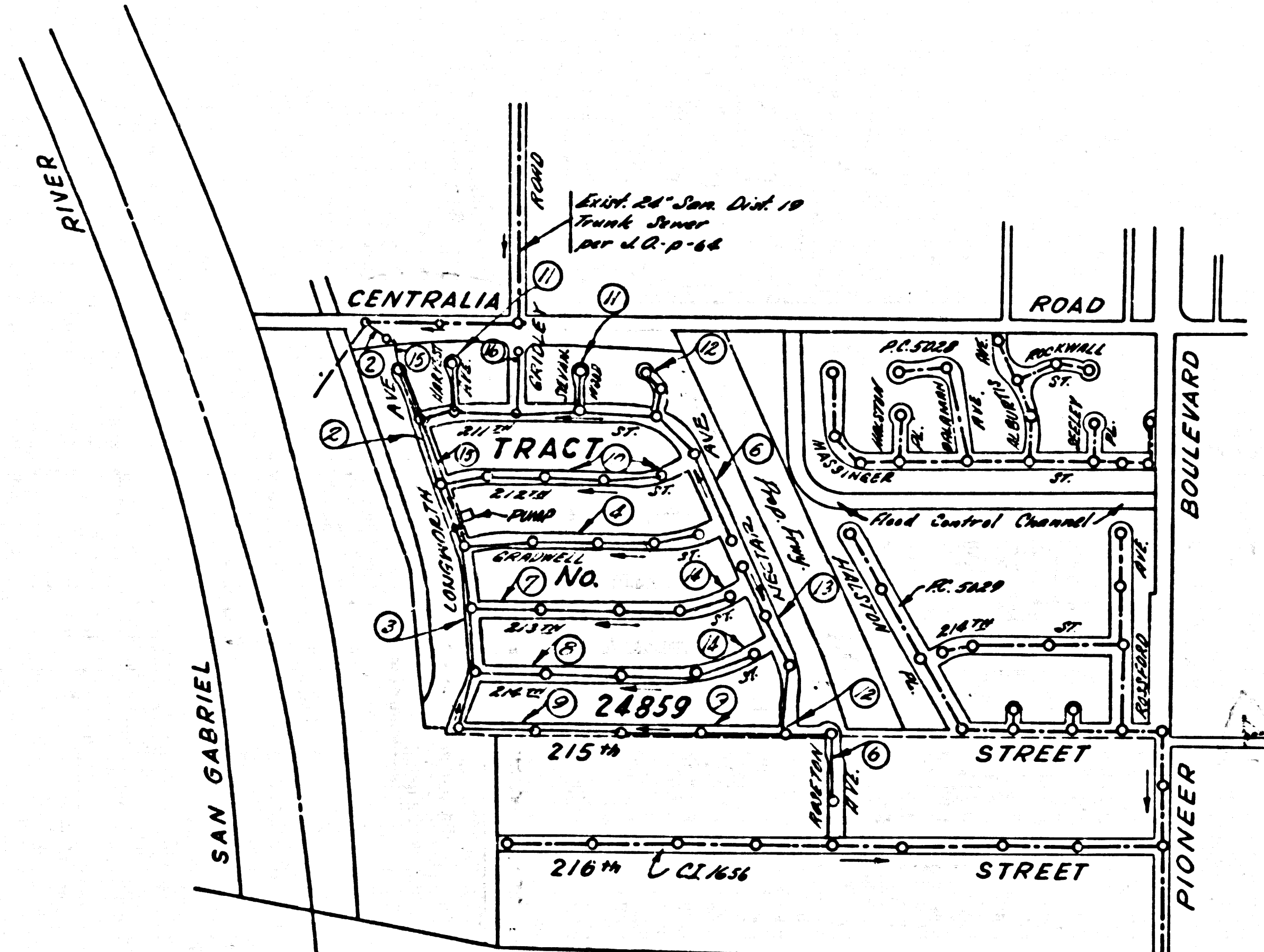
SCALE: VERT. 1"=4' NOV., 1960

PREPARED IN THE OFFICES OF  
 COUNTY ENGINEER  
 559 VAN NUTS BLVD., VAN NUYS, CALIF.  
 ST. 1-1501

FOR LEGEND SEE PLAN NO. S-A-64

NOTE:  
 GRADES TO WHICH THIS IMPROVEMENT IS TO BE CONSTRUCTED ARE SHOWN ON PLANS AND PROFILES. GRADE POINTS FOR TOP OF CURBS, CENTER LINE OF STREETS, OR CENTER LINE OF ALLEYS ARE SHOWN BY CIRCLES ON PROFILES. AT ALL POINTS BETWEEN DESIGNATED POINTS THE GRADE SHALL BE ESTABLISHED SO AS TO CONFORM TO A STRAIGHT LINE DRAWN BETWEEN SAID DESIGNATED POINTS.  
 ELEVATIONS ARE IN FEET ABOVE U.S.C. & G.S. SEA LEVEL DATUM OF 1929.  
 THIS DRAWING AND THE DATA HEREON ARE HEREBY MADE A PART OF THE SPECIFICATIONS.  
 BEFORE WORK CAN BE STARTED, THE CONTRACTOR MUST OBTAIN A PERMIT TO EXCAVATE IN COUNTY STREETS FROM THE L.A. COUNTY ROAD DEPT., DISTRICT OFFICE NO. 4, AND PAY A FEE WITH THE COUNTY ENGINEER, ROOM 300 COUNTY ENGINEER BUILDING, 404 N. 7th ST., SUFFICIENT TO COVER THE COST OF CONSTRUCTION INSPECTION AND RECORD PLANS.  
 APPROVAL OF THIS PLAN BY THE COUNTY OF LOS ANGELES DOES NOT CONSTITUTE A REPRESENTATION AS TO THE ACCURACY OF THE LOCATION OF OR THE EXISTENCE OR NON-EXISTENCE OF ANY UNDERGROUND UTILITY PIPE, OR STRUCTURE WITHIN THE LIMITS OF THIS PROJECT. THIS NOTE APPLIES TO ALL PAGES.  
 IF WORK IS TO BE DONE IN A STATE HIGHWAY, A PERMIT MUST BE OBTAINED FROM THE STATE OF CALIFORNIA, DIVISION OF HIGHWAYS, 128 SOUTH SPRING STREET.

COUNTY OF LOS ANGELES, CALIFORNIA  
 APPROVED, JOHN A. LAMBE, COUNTY ENGINEER  
 APPROVED, C.R. COMPTON, CHIEF ENGINEER  
 BY: *E.E. P... ..* ASSISTANT SANITATION ENGINEER  
 BY: *J. ... ..* OFFICE ENGINEER  
 CHECKED BY: *B.F. ... ..* 3-10-61  
 OFFICE OF COUNTY ENGINEER, BLDG. C. E. NO. 116.35  
 SUBMITTED BY: *John L. ... ..* 3-9-61  
 LOS CERRITOS REGIONAL ENGINEER, R.C.E. NO. 3871



BENCH MARK: Elev. 34.974  
 (Arteria Quad) 1955 SY 3389  
 1/4 Sec. 3, S. 1/2 W. 1/4 Cor. 2  
 E. 1st. Pioneer Blvd. & Centralia Rd. W. 1/4

CONNECTION CHARGES AS INDICATED  
 Raymond Long 3-3-61

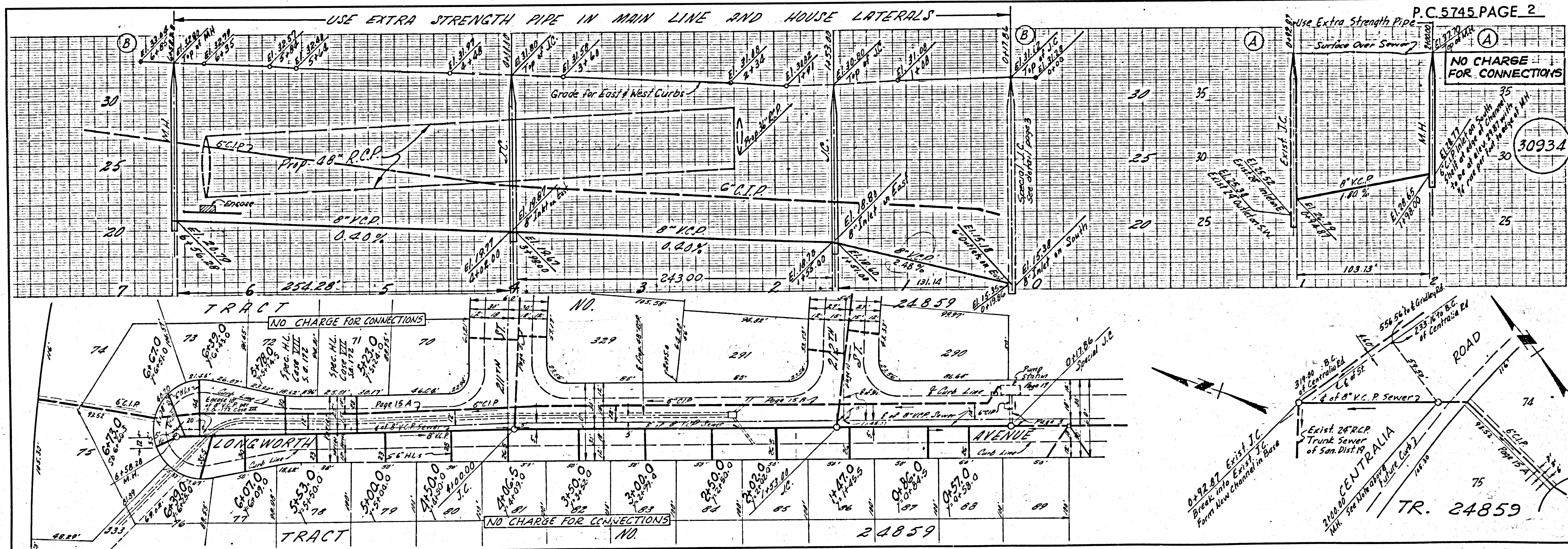
REVISION:  
 1- RELOCATE FORCE MAIN PG. 15 & PG. 2A.  
 2- REVERSE SEWER GRADE PG. 16.  
 APPROVED *John L. ... ..* 4-26-61

Revision:  
 Pump Station moved 1.5' S'ly.  
 Pages 2 & 3 Special J.C. in front of Pump Station moved 1.5' S'ly.  
 Page 15-B lengthen force main 1.5'.  
 APPROVED *B.F. ... ..* 9-18-61

BEFORE BREAKING INTO ANY EXISTING STRUCTURE AND BEFORE FINAL ACCEPTANCE OF THIS WORK, COUNTY SANITATION DISTRICT (DU 4-1281) SHALL BE NOTIFIED IN ORDER THAT REQUIRED INSPECTION CAN BE MADE.  
 NO CONNECTIONS FOR THE DISPOSAL OF INDUSTRIAL WASTES SHALL BE MADE TO SEWERS SHOWN ON THESE DRAWINGS WITHOUT WRITTEN PERMISSION FROM THE CHIEF ENGINEER AND GENERAL MANAGER OF THE COUNTY SANITATION DISTRICTS.

INDEX MAP  
 P.C. 5745 JN 0355.01  
 TRACT 24859

SCALE 1"=600'

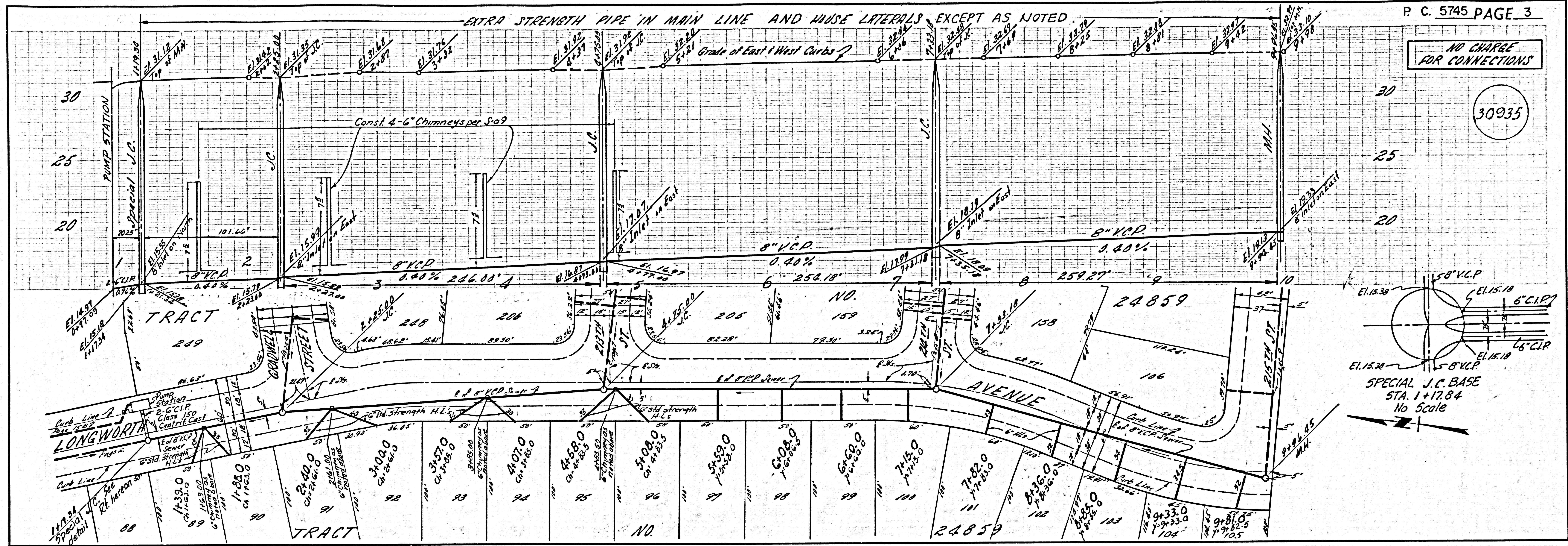


P.C. 5745 PAGE 2

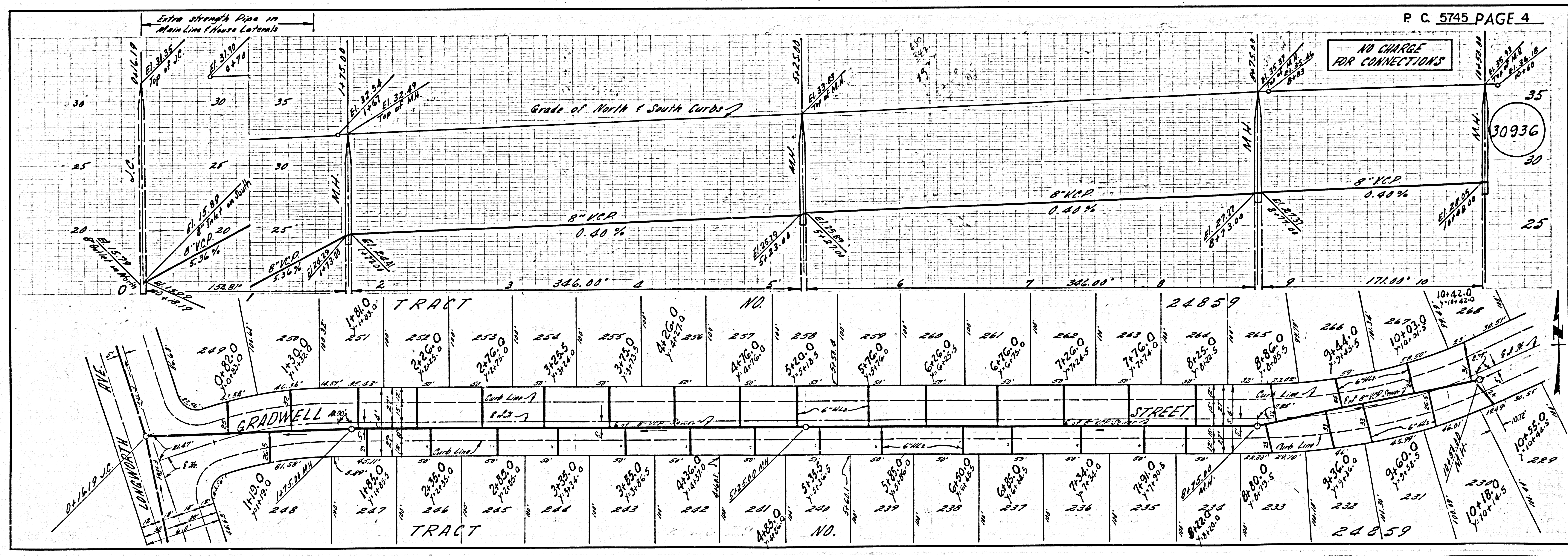
NO CHARGE FOR CONNECTIONS

30934

1 BC 2482 1M 032201 TRACT 54820

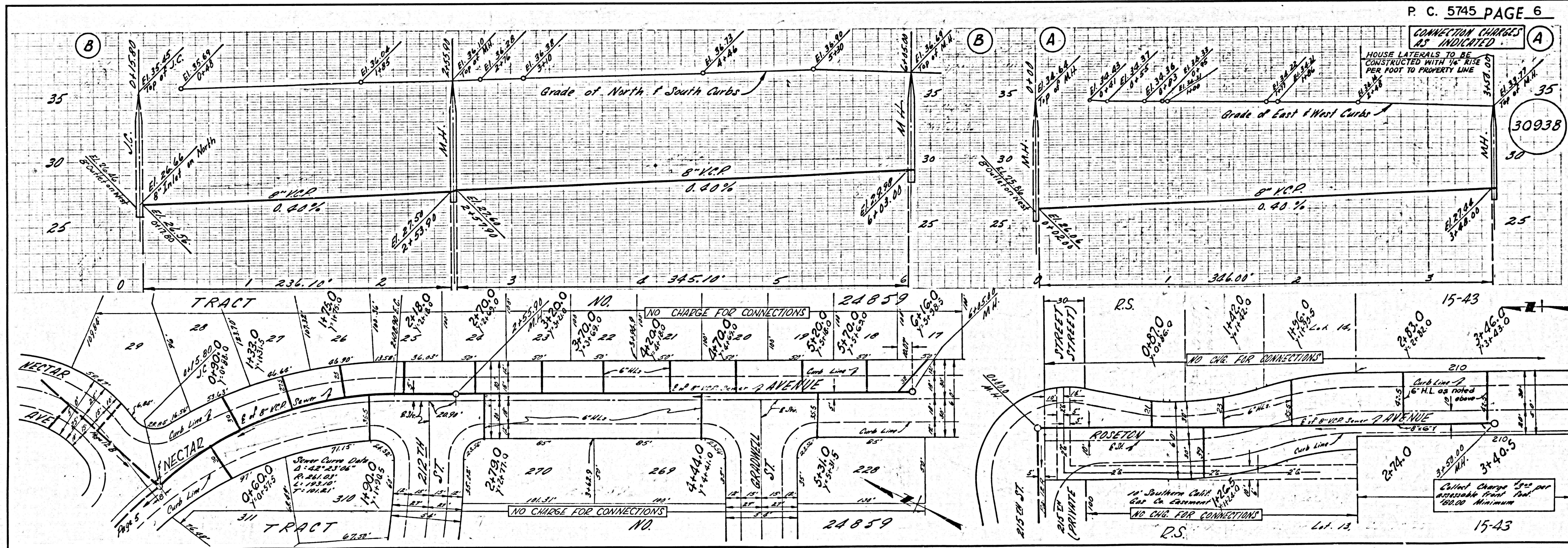
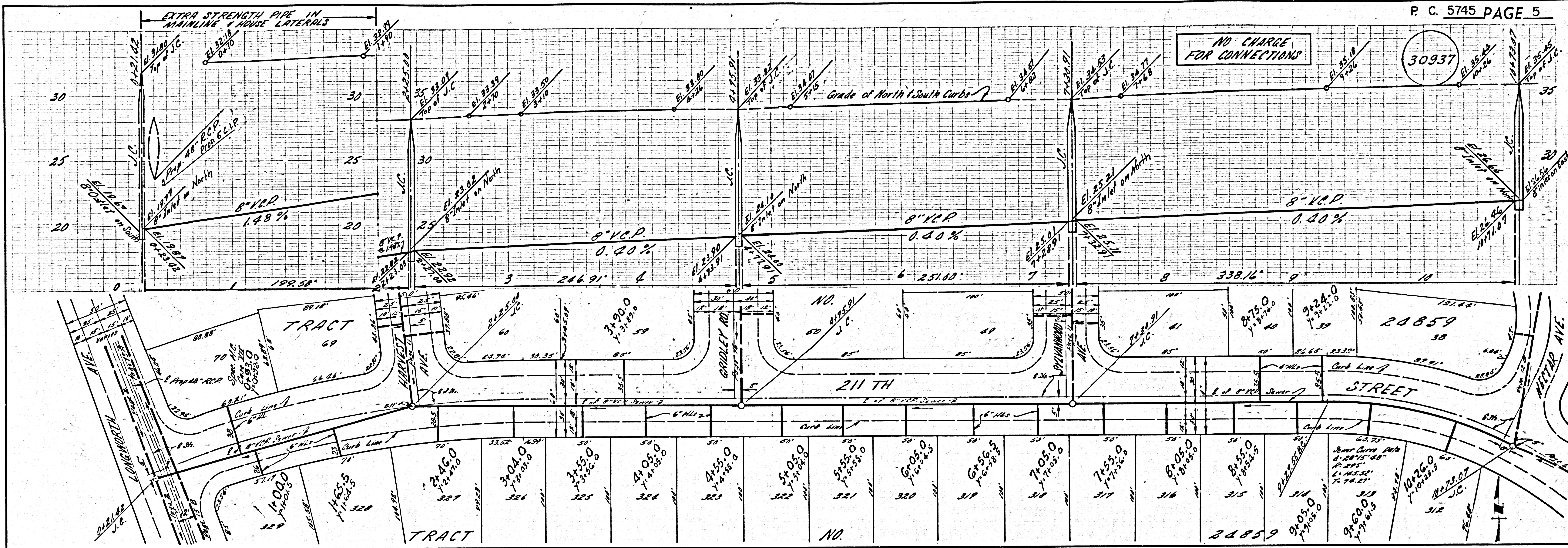


7 Sep 61



P. C. 5745 PAGE 3

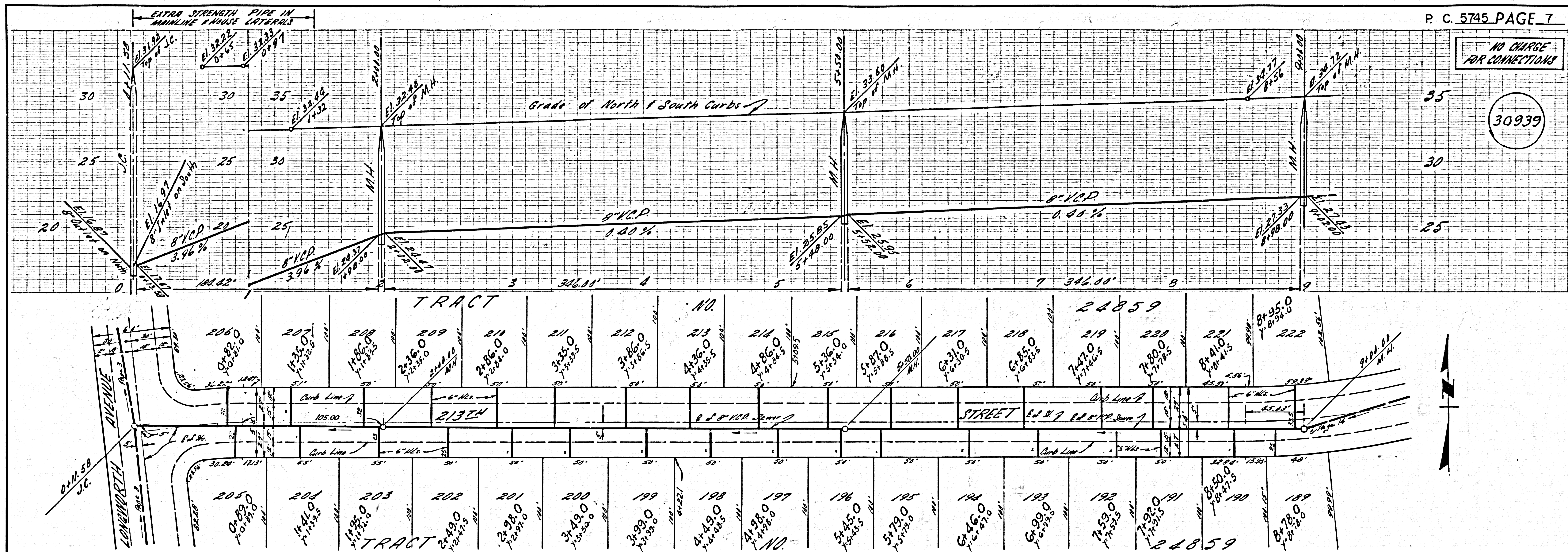
P. C. 5745 PAGE 4



3 B.C. 2442 1M 032201 TRACT 54829

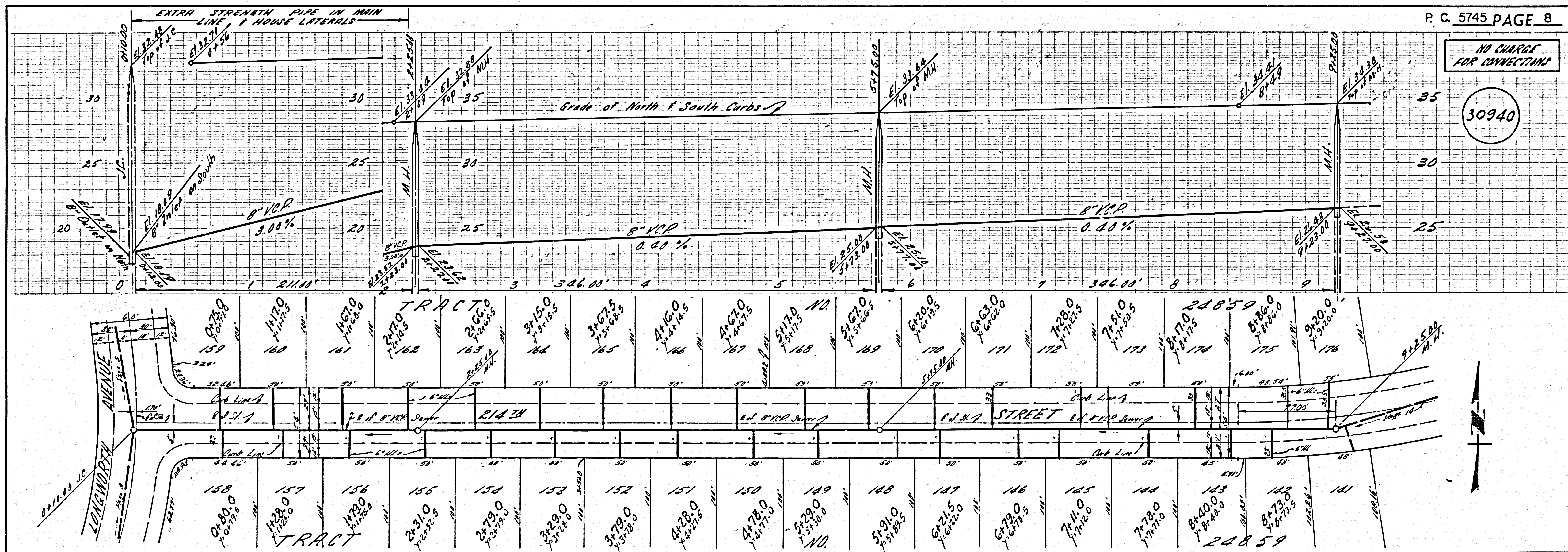
NO CHARGE FOR CONNECTIONS

30939

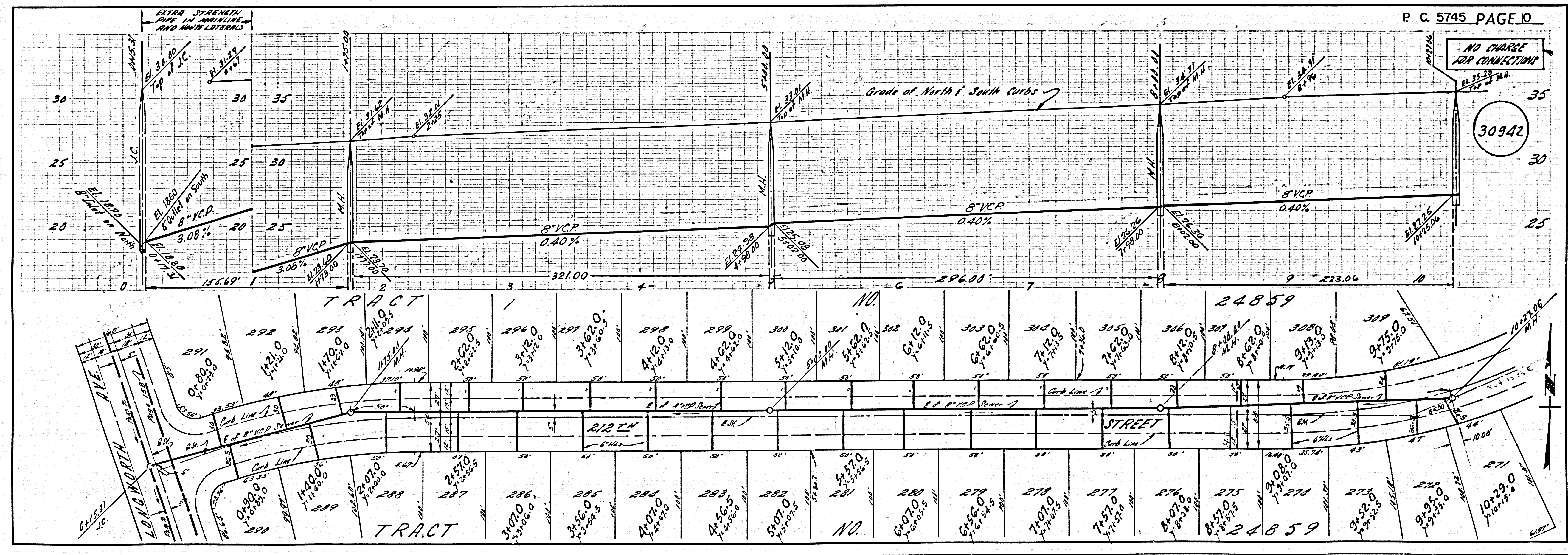
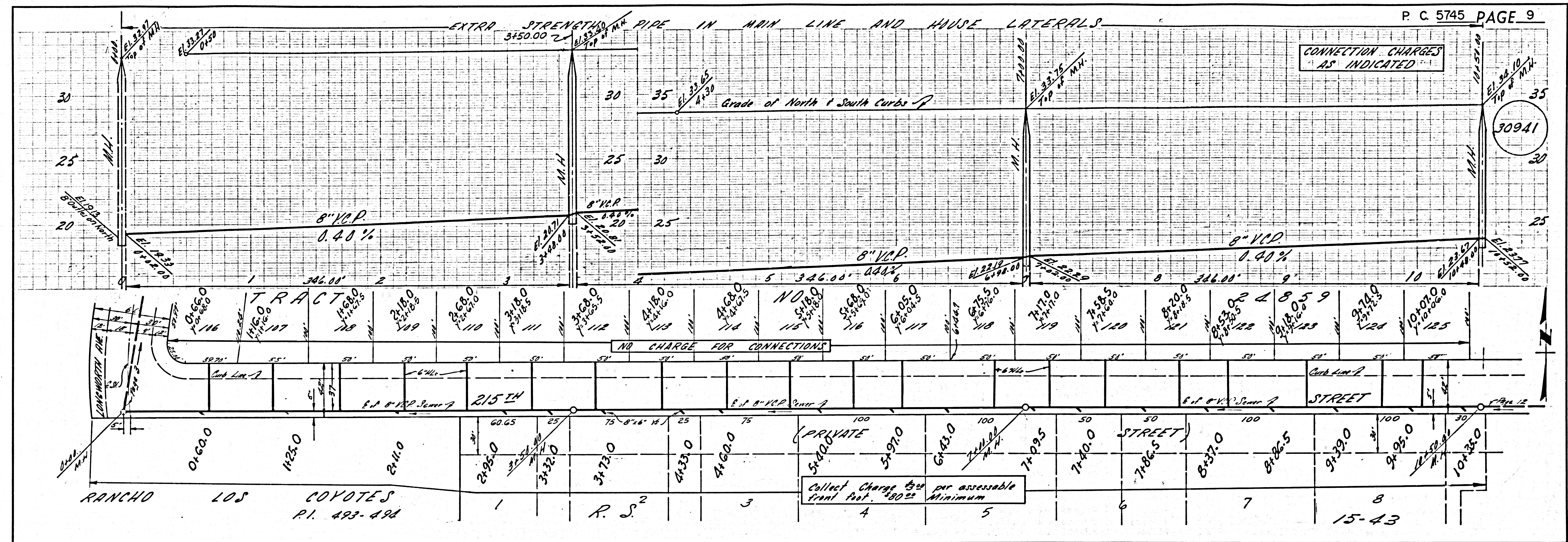


NO CHARGE FOR CONNECTIONS

30940



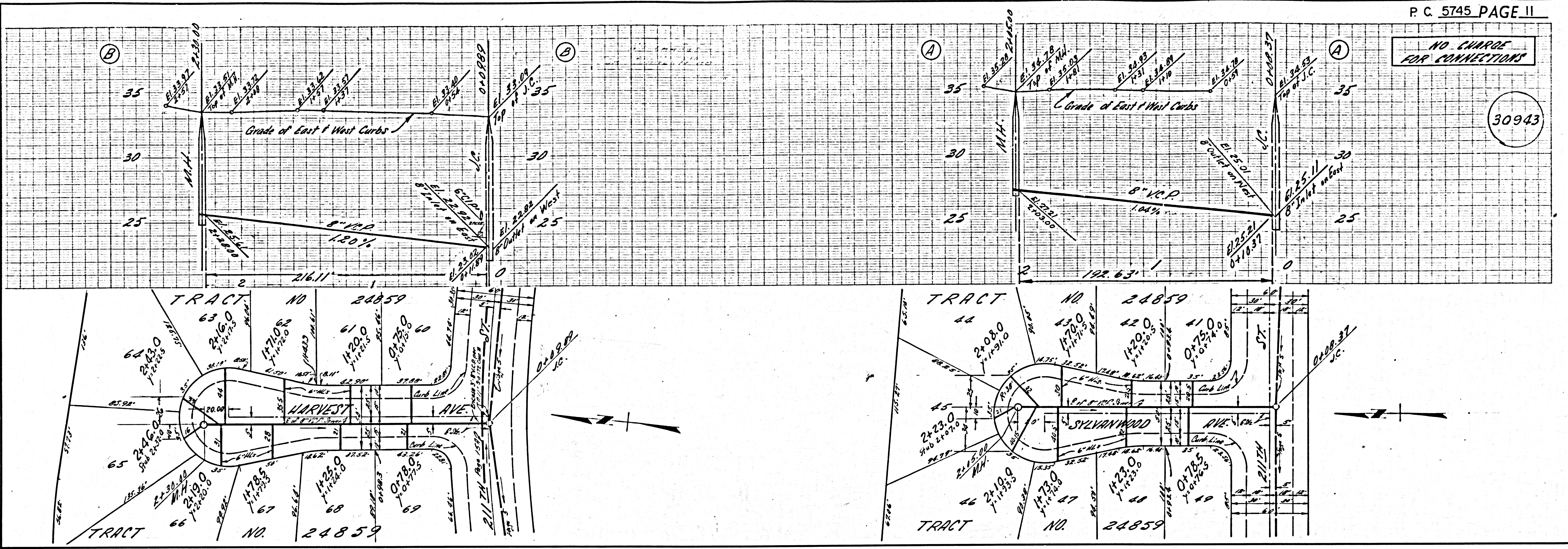
BC 2542 11-032201 TRACT 24859



BC 2542 1M 0322.01 TRACT 54829

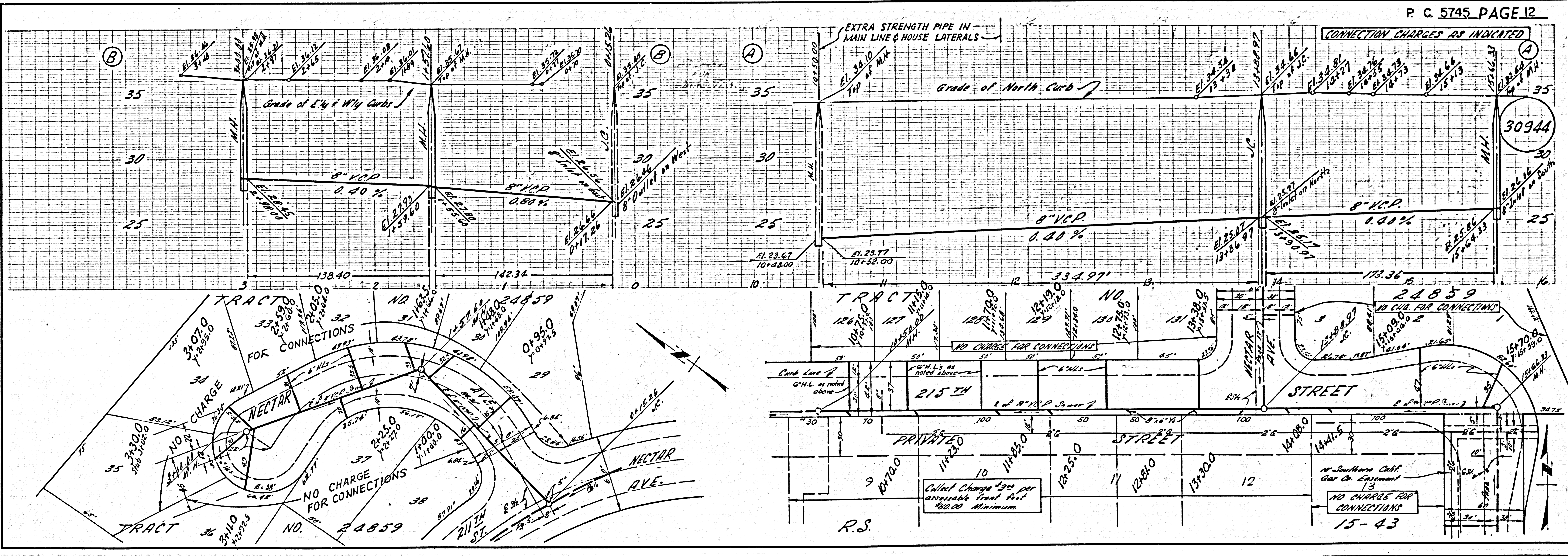
NO CHARGE FOR CONNECTIONS

30943

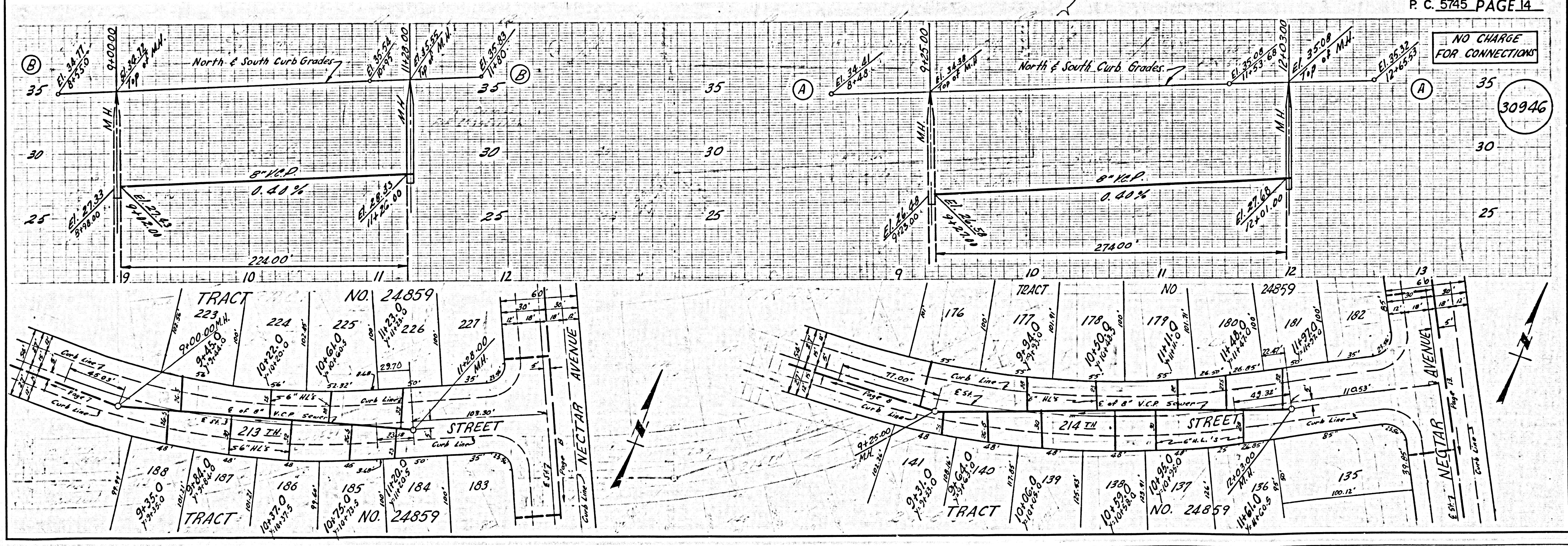
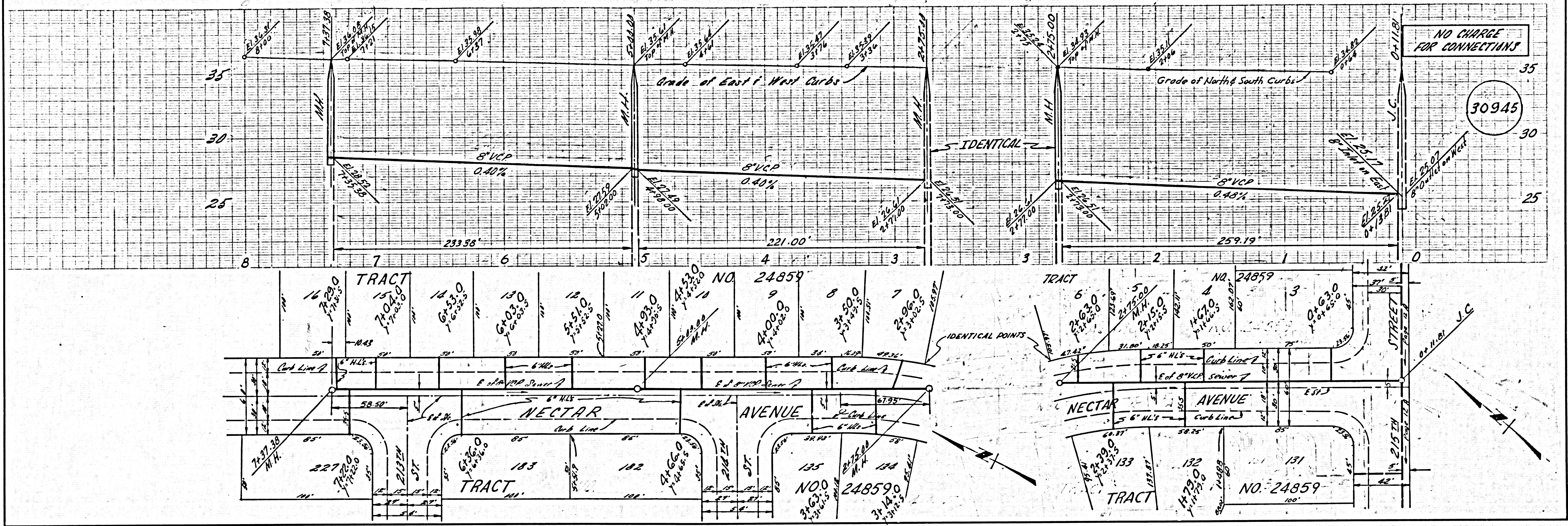


CONNECTION CHARGES AS INDICATED

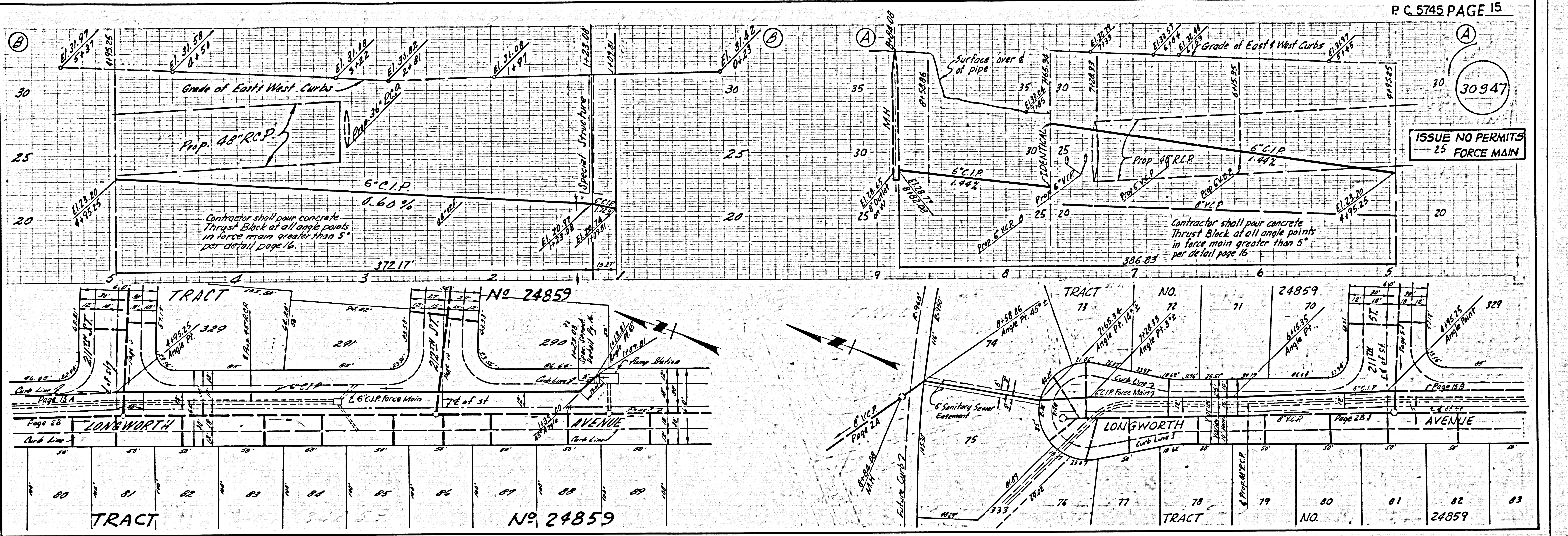
30944



P.C. 2442 1M 032201 LRACL 54829

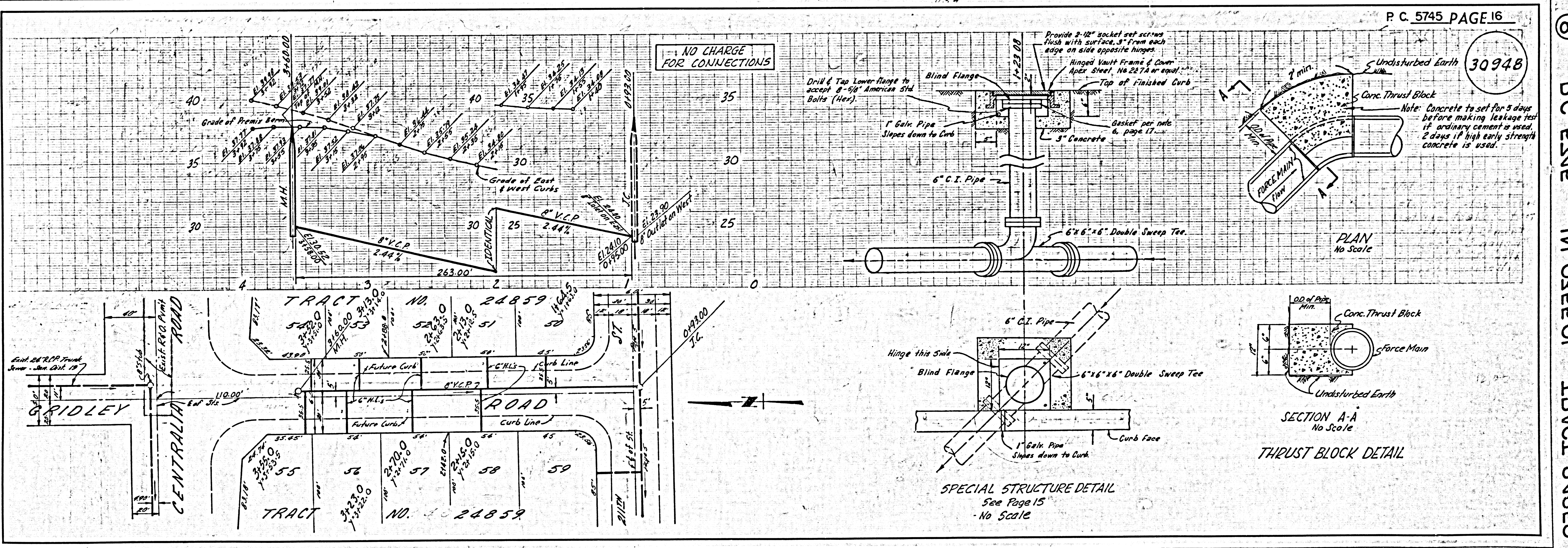


P.C. 5745 - 11-032201 - TRACT 54850



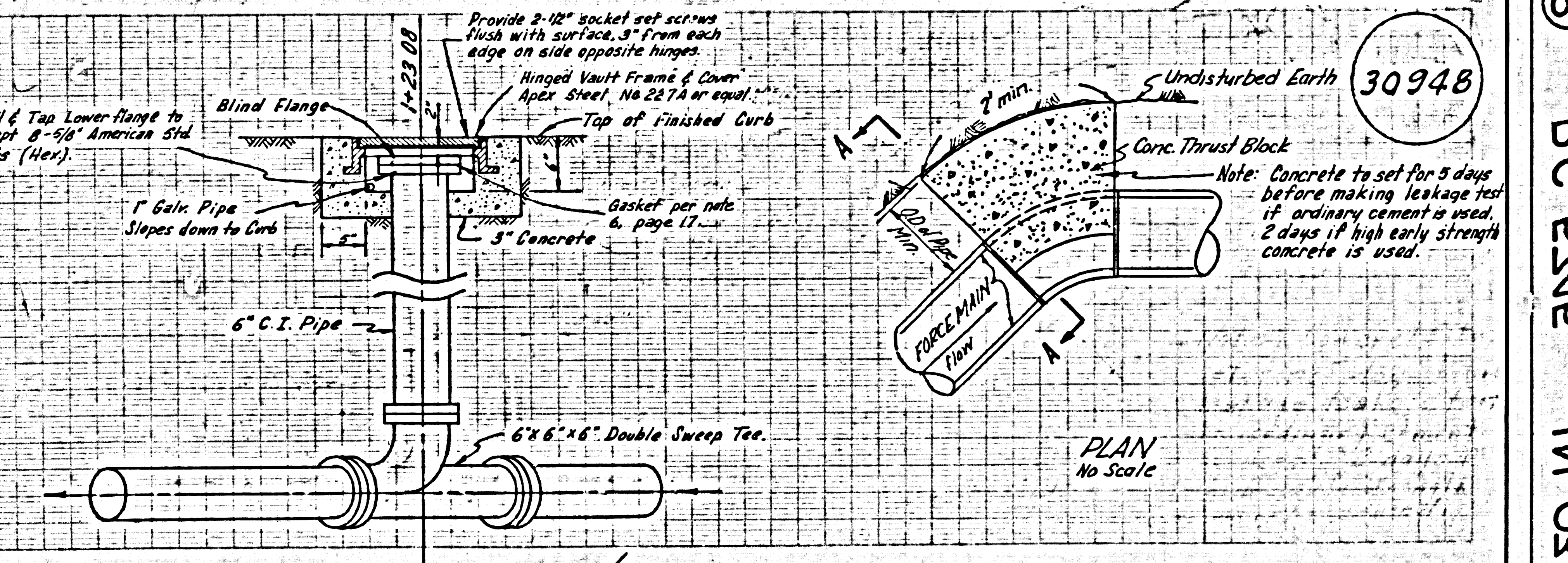
ISSUE NO PERMITS  
25 FORCE MAIN

30947

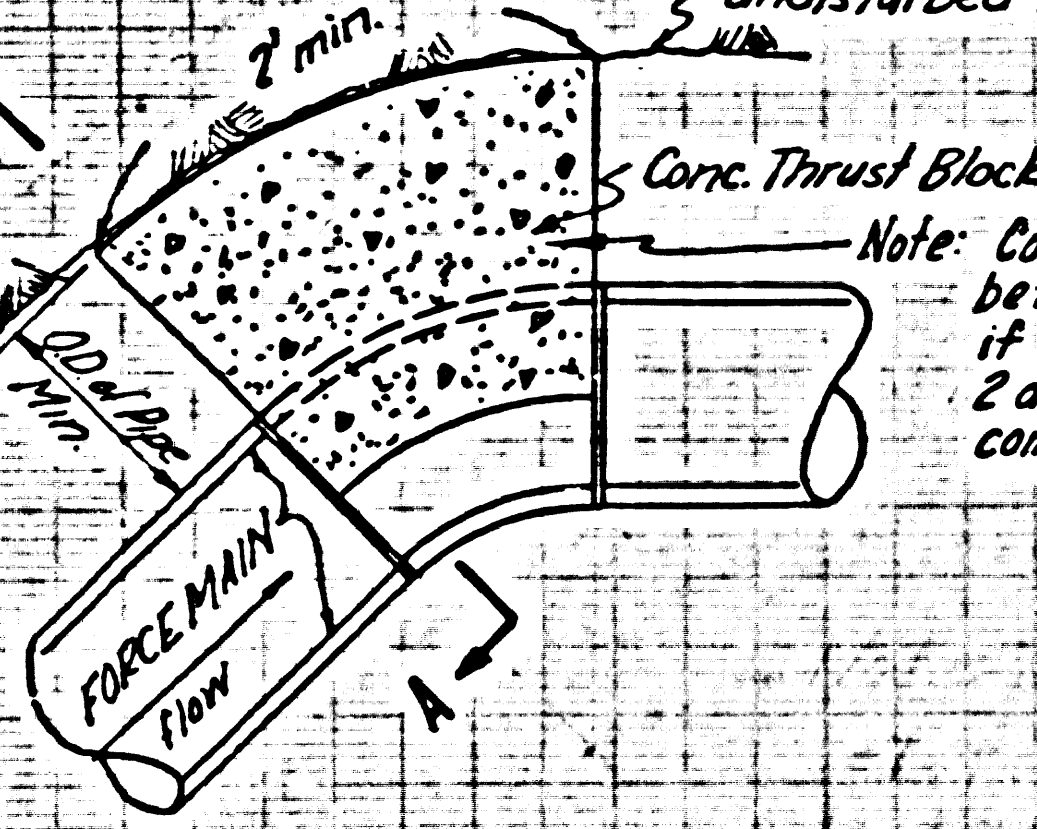


NO CHARGE FOR CONNECTIONS

30948



SPECIAL STRUCTURE DETAIL  
See Page 15  
No Scale

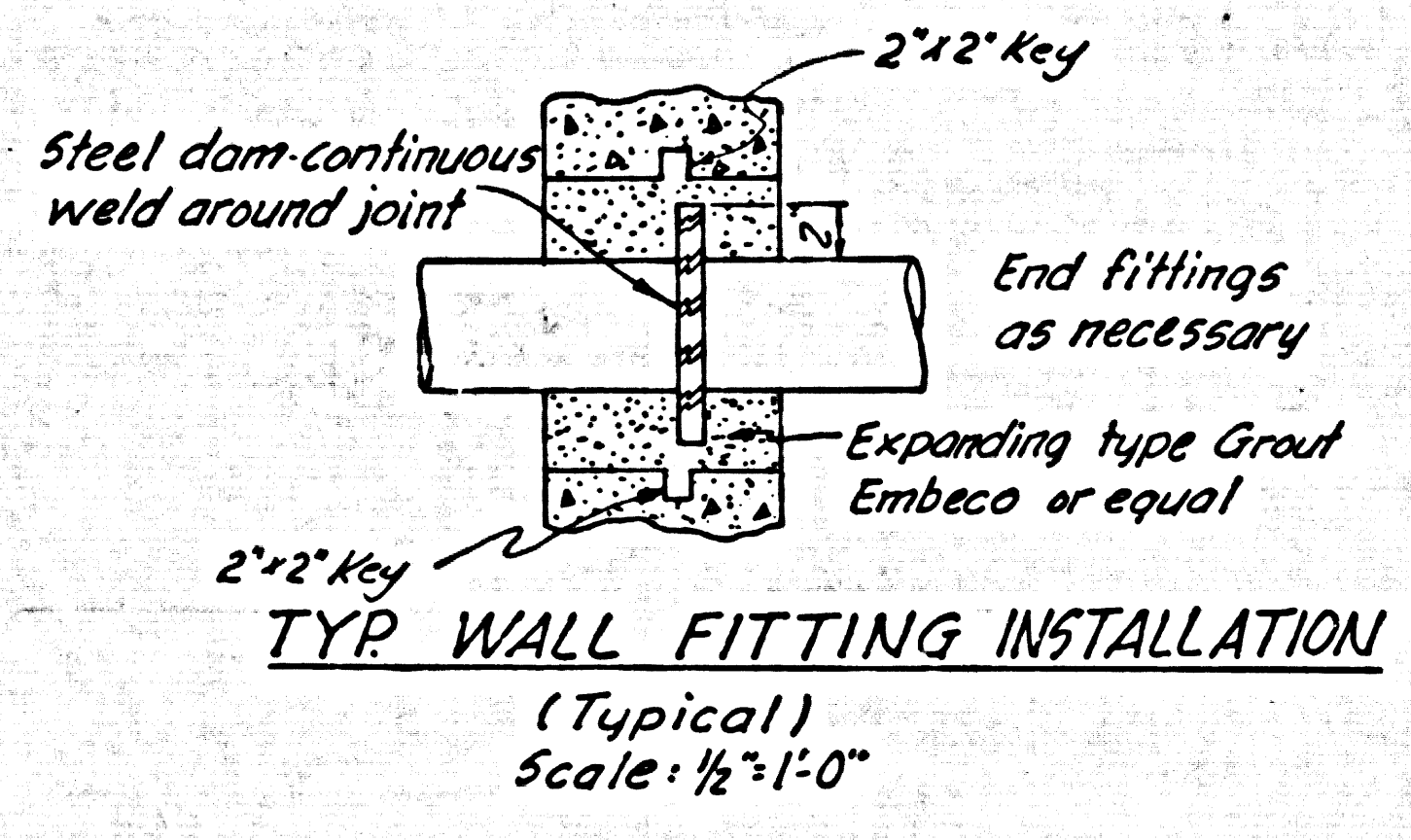


SECTION A-A  
No Scale  
THRUST BLOCK DETAIL

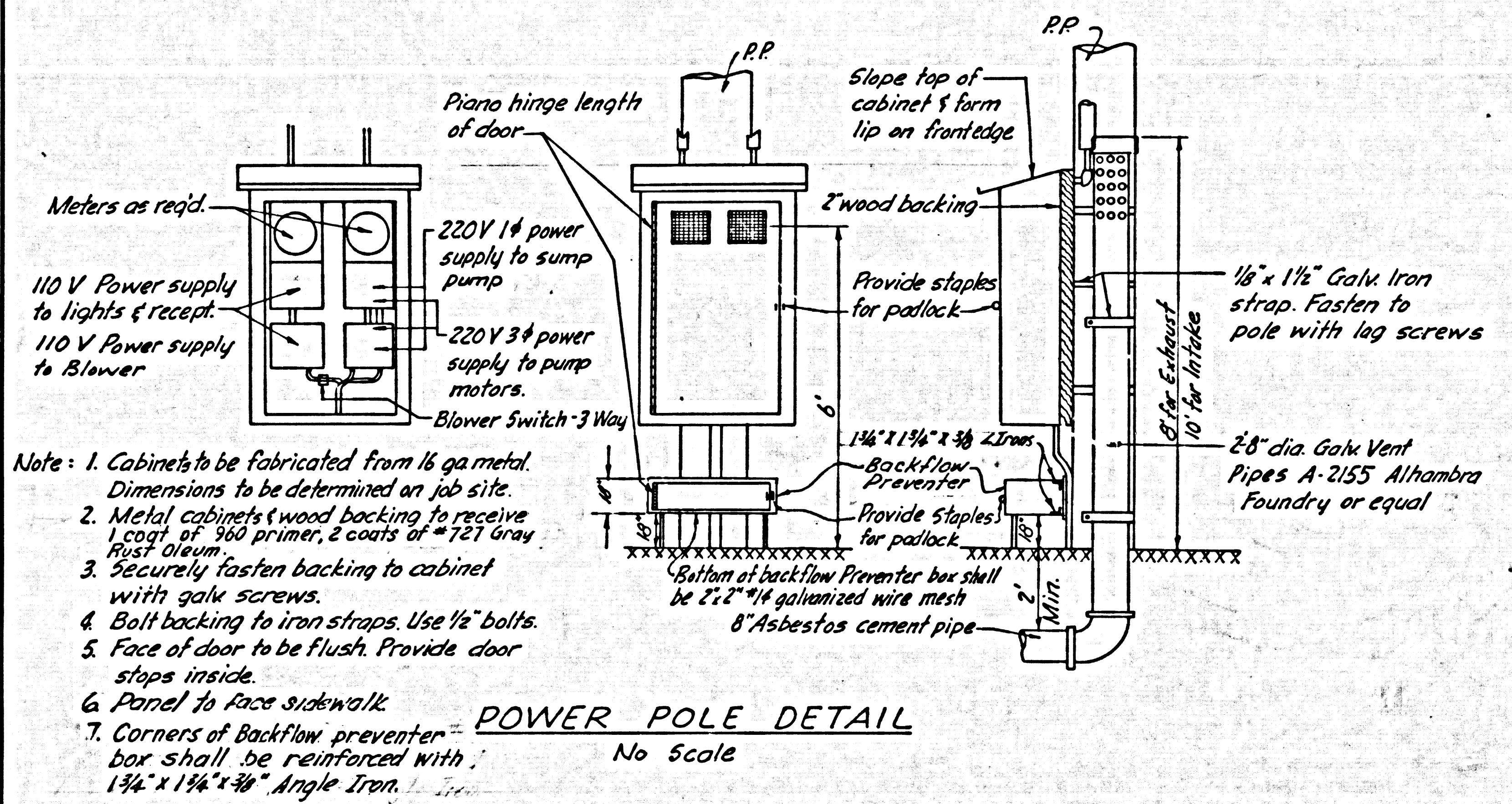
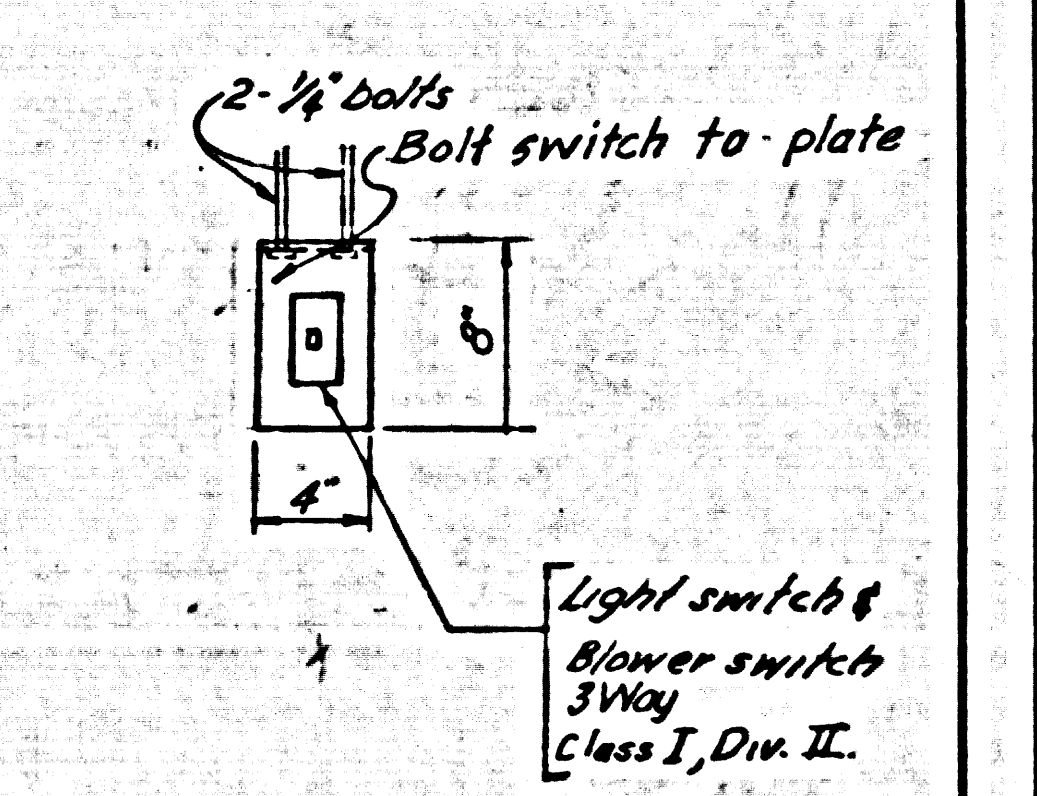
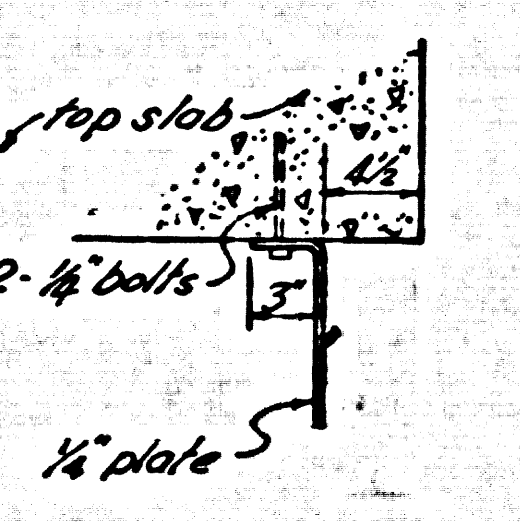
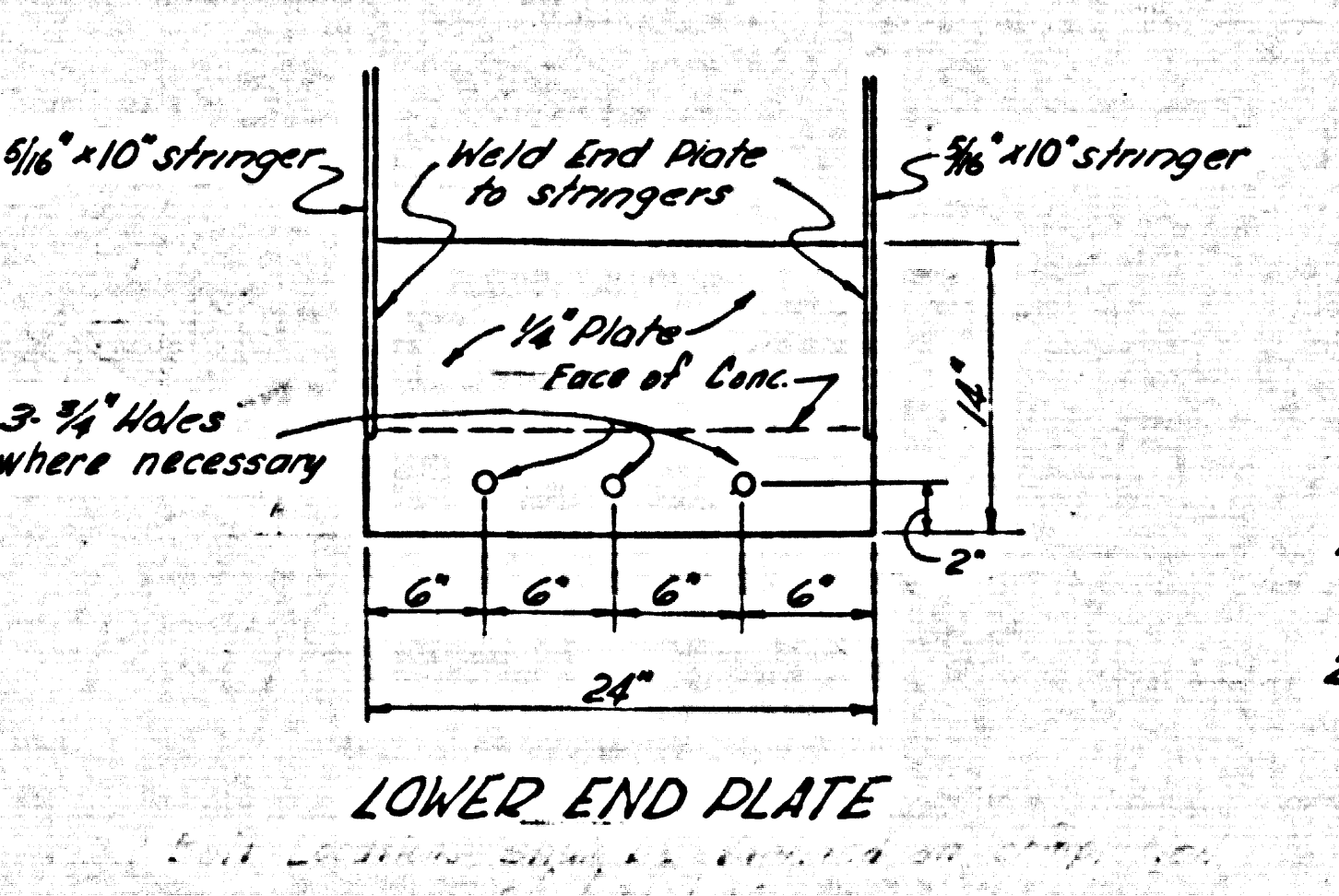
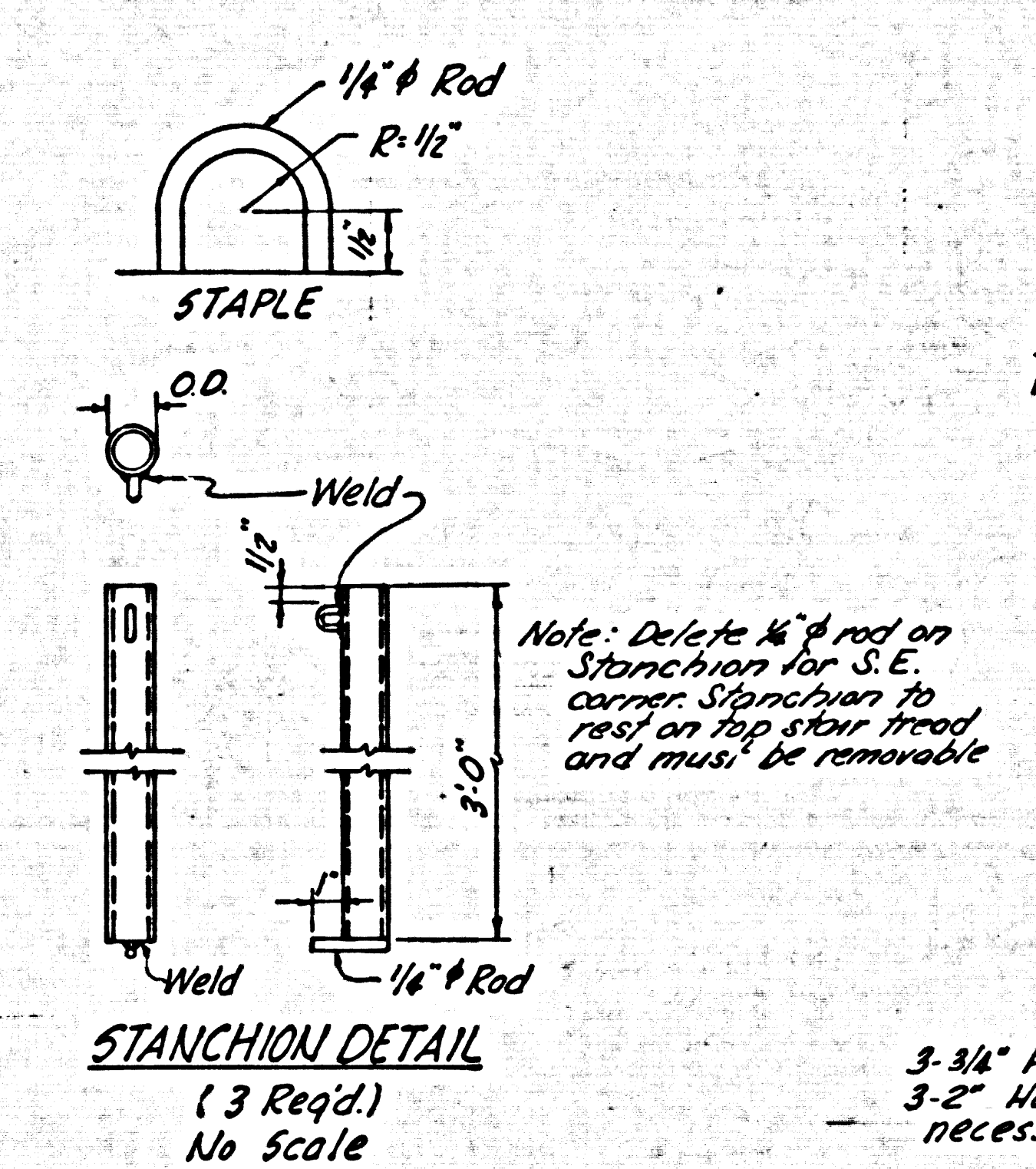
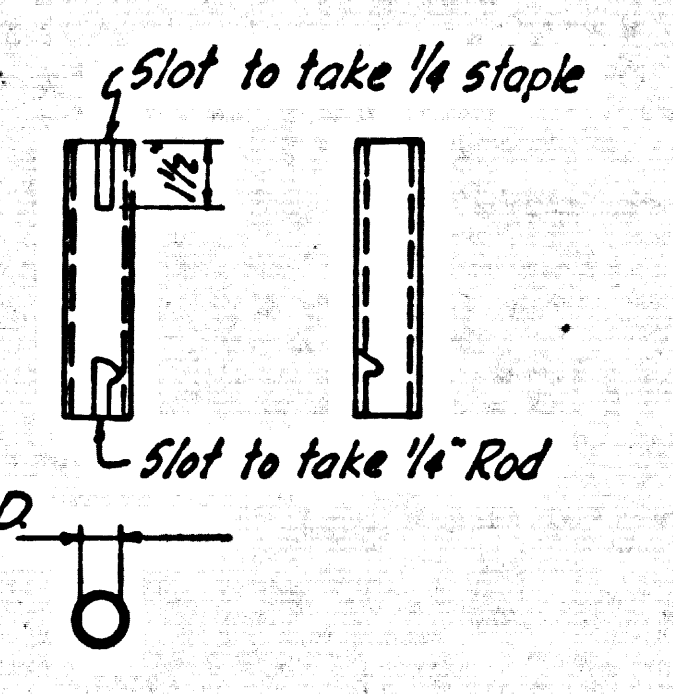
B.C. 2542 1M 032201 TRACT S4829



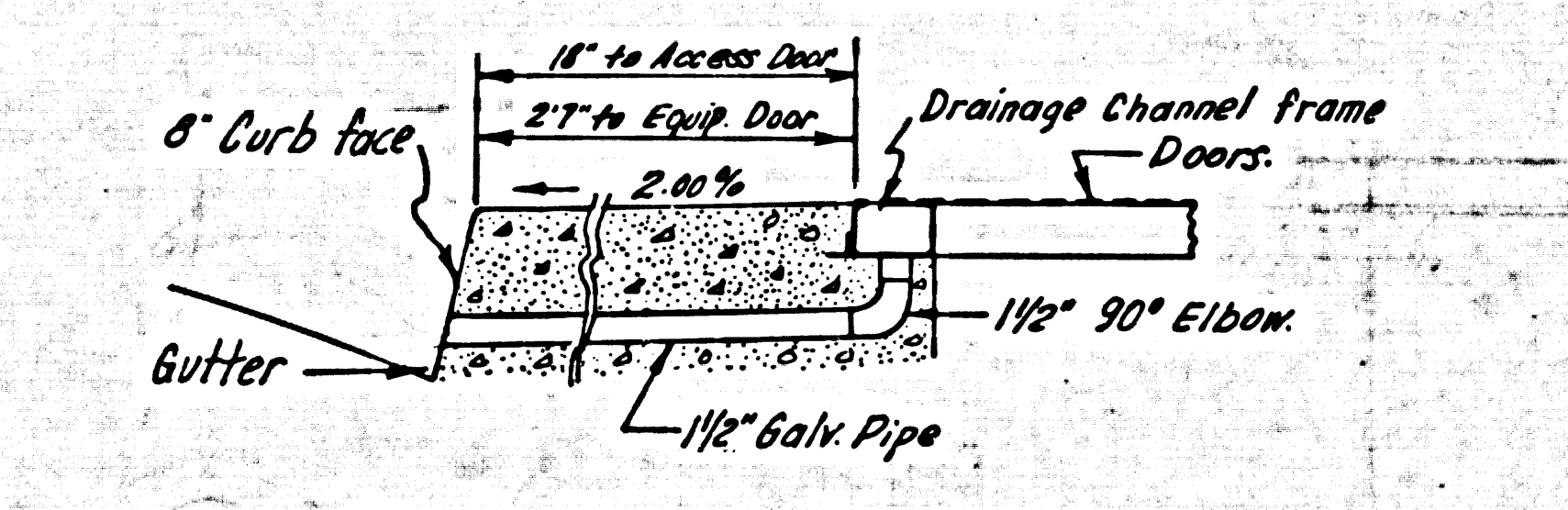
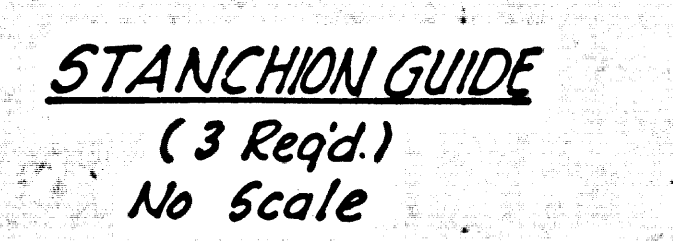




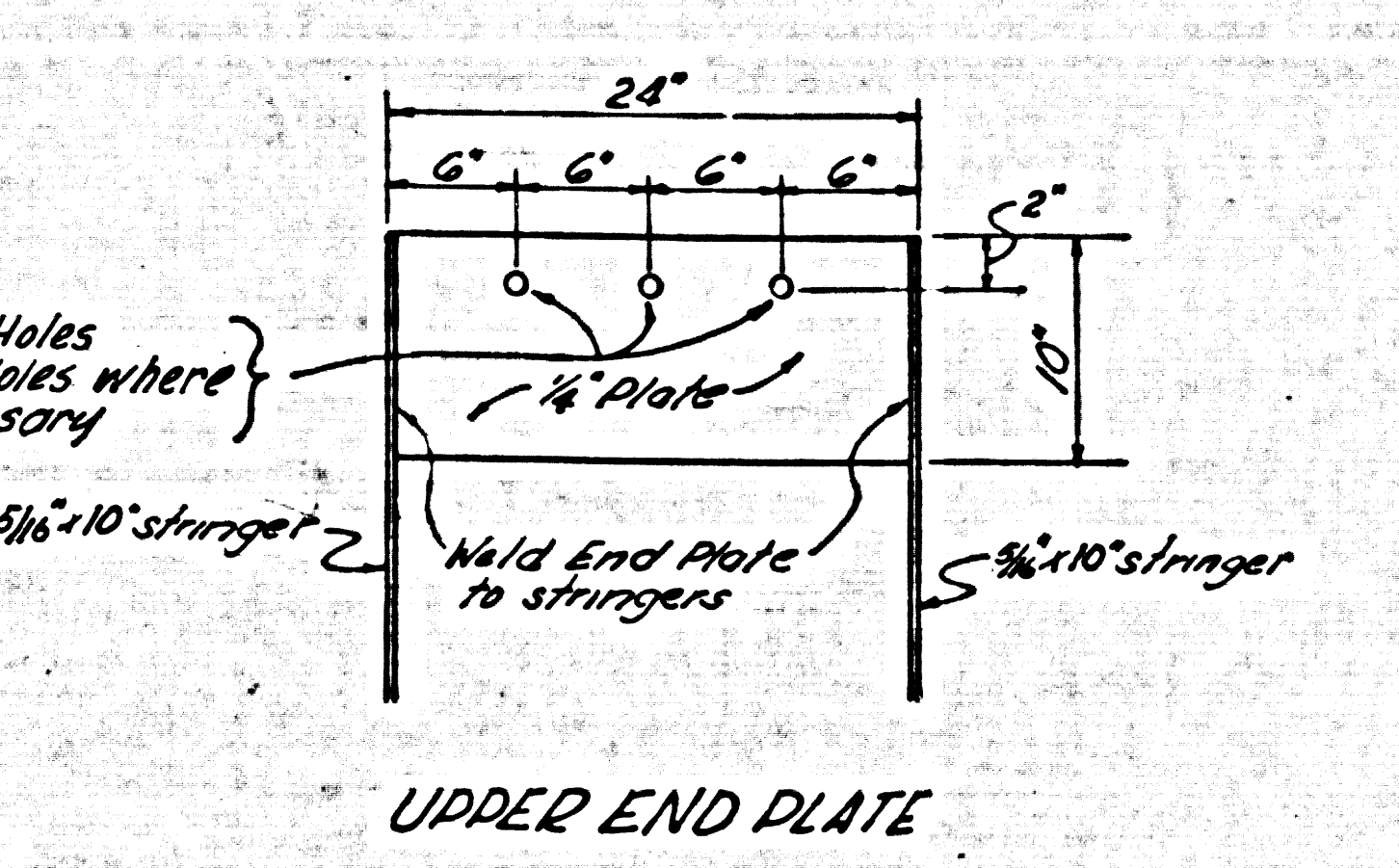
- POWER POLE**
1. Pole shall be a round creosote treated pole with a min. top dia. of 5". Pole shall be 25'-0" long. 5'-0" shall be imbedded in concrete and 20'-0" shall extend above sidewalk grade.
  2. Service drop & wire holder to be supplied by serving company.
  3. Service heads & conduits to be installed in accordance with Serving Co. requirements.



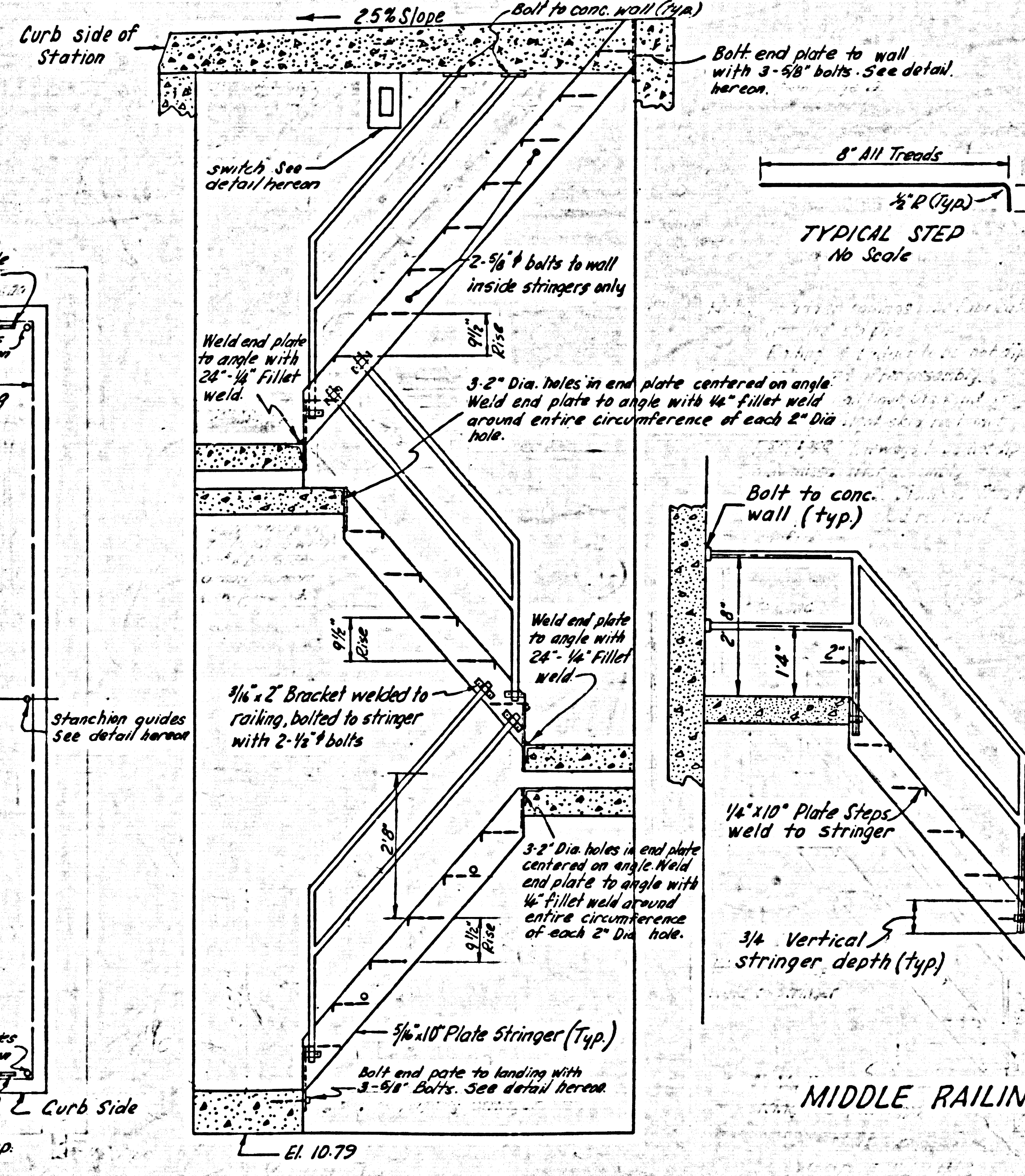
- Note:
1. Cabinets to be fabricated from 16 ga metal. Dimensions to be determined on job site.
  2. Metal cabinets & wood backing to receive 1 coat of 360 primer, 2 coats of #727 Gray Rust oleum.
  3. Securely fasten backing to cabinet with galv screws.
  4. Bolt backing to iron straps. Use 1/2" bolts.
  5. Face of door to be flush. Provide door steps inside.
  6. Panel to face sidewalk.
  7. Corners of Backflow preventer box shall be reinforced with 1 1/2" x 1 1/4" x 3/8" Angle Iron.



- Note:  
Access & Equipment doors.  
No parts to project above top of slab.  
Depressions or gaps that would cause passing public to stumble or fall will not be permitted.

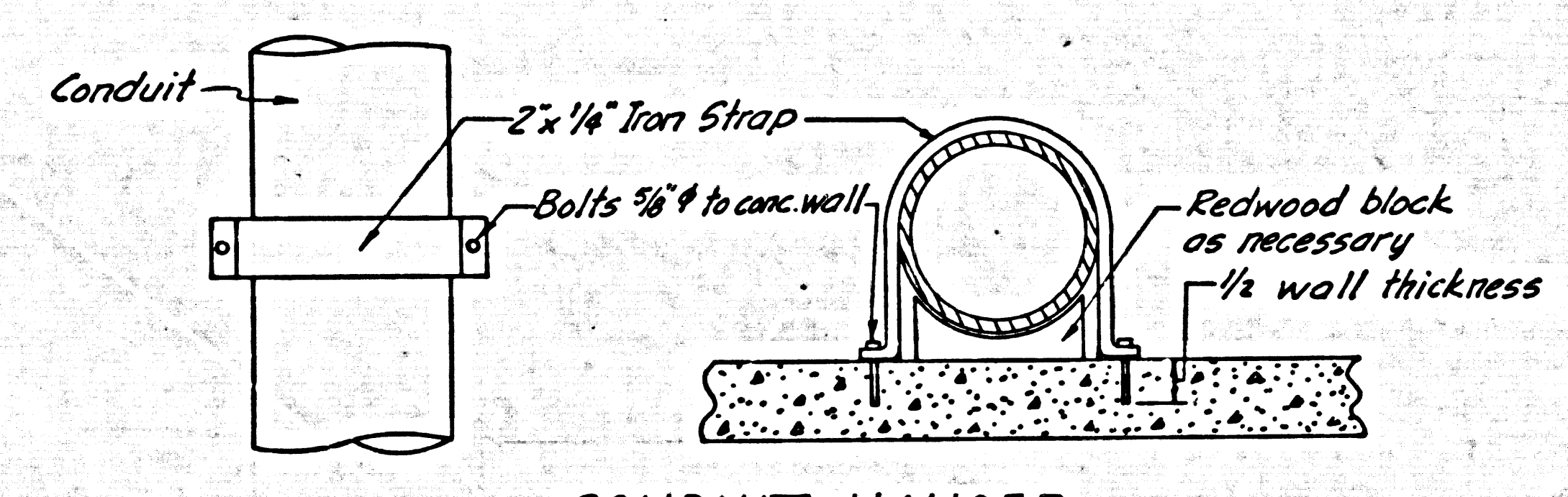


END PLATE DETAILS Scale: 1"=1'-0"

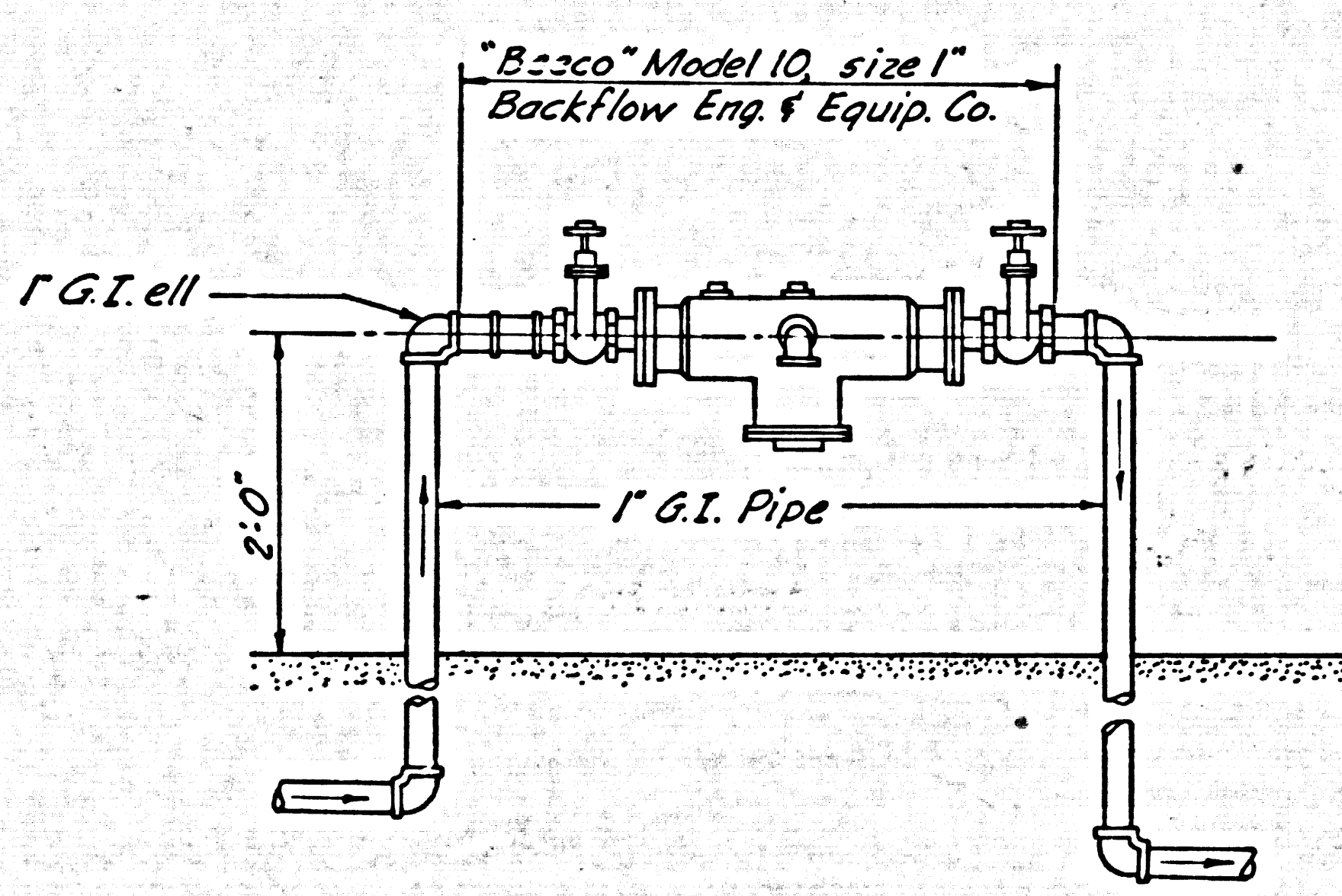


MIDDLE RAILING

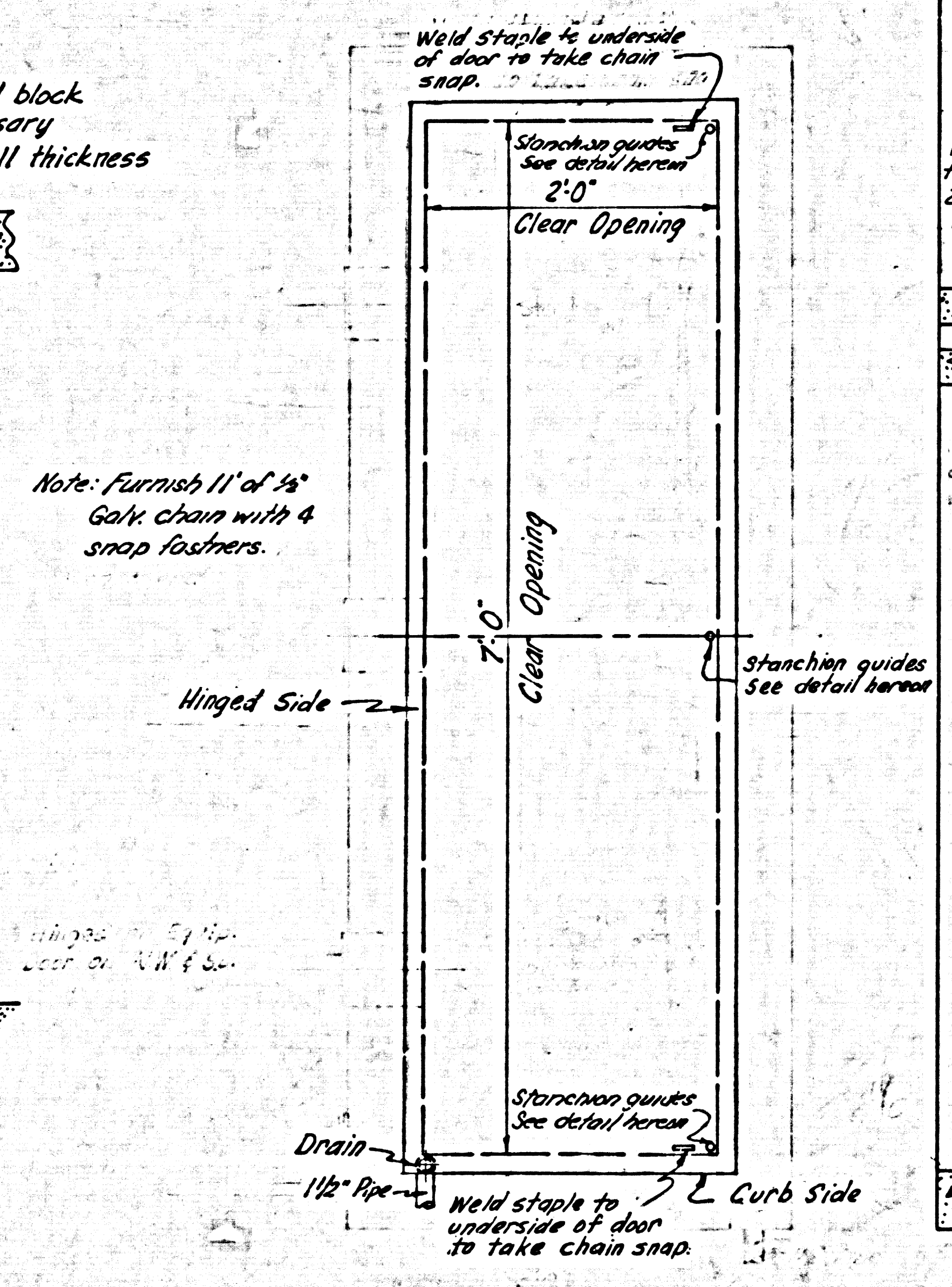
- Note:
1. All dimensions for Ladder shall be field checked after forms have been removed from the structure.
  2. Ladder railings to be fabricated from 1 1/2" Std pipe.
  3. Railings and Ladder to be hot dipped galvanized after assembly.
  4. Steps shall have Diamond Tread or equivalent skid resistant surface.



CONDUIT HANGER (Typical) Scale: 1/2"=1'-0"



BACKFLOW PREVENTER Scale: 1/4"=1'-0"



TYPE VA EXTERIOR SIDEWALK DOOR Scale: 1"=1'-0"

VORHEIS TRINDLE CO. 5919 VAN NUYS BLVD. VAN NUYS  C.R. NELSON R.E. 8781	PRIVATE CONTRACT NO. 5745 SEWAGE PUMP STATION
	COUNTY OF LOS ANGELES JOHN A. LAMBIE COUNTY ENGINEER
SHEET 10 OF 11 SHEETS	

10 BC2552 111032201 TRACL S4820

31154

