

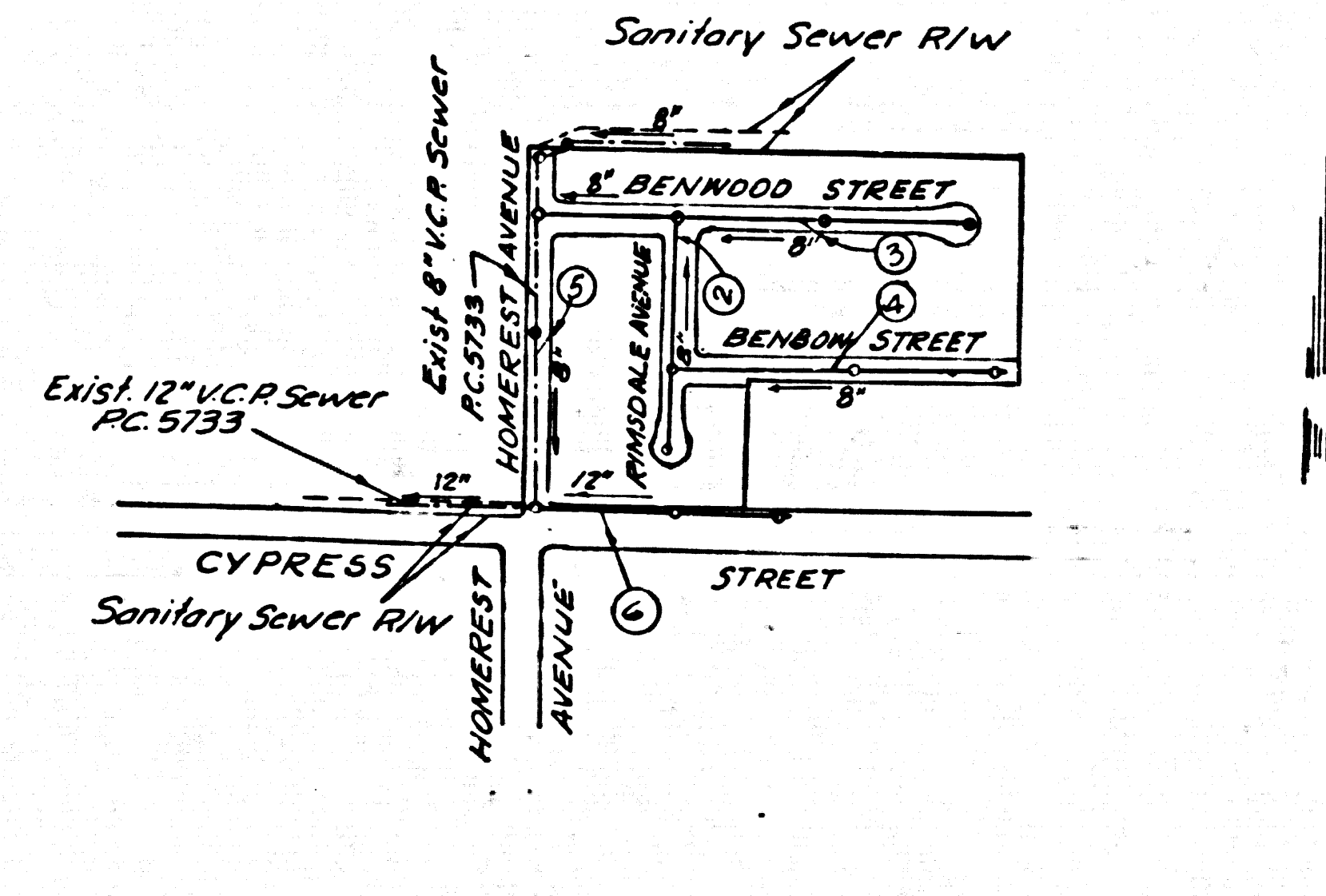
SAN DIMAS BLDG. DIST. NO. 10

PROFILE ALIGNMENT AND GRADE OF P.C. 5751  
 SANITARY SEWERS PAGE 1  
 TO BE CONSTRUCTED IN J.N. 0355.05  
 TRACT NO 26167

PRIVATE CONTRACT NO. 5751

W.S. 47  
 3 SHEETS; 6 PAGES  
 SCALE: VERT. 1"=4'  
 HORIZ. 1"=40' JULY 1961  
 PREPARED IN THE OFFICES OF  
 ADAMS AND ELLS  
 CIVIL ENGINEERS  
 REG. C. E. NO. 10880  
 FOR LEGEND SEE PLAN NO. S-A-44

31114



BENCH MARK: Elev. 512.608 SG 68  
 Co. Sur. Mon. 160' N of E  
 Intersection of ELSPETH WAY and  
 CYPRESS AVENUE, Covina Quad. 1955.

- NOTES:
- PROVIDE STAKES ON THE PROPERTY LINE OR PROPERTY LINES PRODUCED AT RIGHT ANGLES TO THE SEWER LINE AT THE CENTER LINE OF EACH MANHOLE.
  - NO REPRESENTATIVE OF THE COUNTY ENGINEER WILL SURVEY OR LAY OUT ANY PORTION OF THE WORK.
  - THE OWNER OR HIS AUTHORIZED REPRESENTATIVE SHALL FURNISH THE COUNTY ENGINEER WITH GRADE SHEETS AND STATIONING FOR ALL HOUSE LATERALS AND Y BRANCHES AND SHALL PROVIDE STAKES FOR THEM AT THEIR PROPER LOCATIONS WITH STATIONING PLAINLY MARKED. ANY CHANGE IN LOCATION SHALL BE REQUESTED IN WRITING BY THE OWNER OR HIS REPRESENTATIVE.
  - THE PRIVATE ENGINEER SHALL FURNISH THE HOUSE LATERAL DEPTH AT THE PROPERTY LINE BELOW THE TOP OF CURB ELEVATION FOR EACH HOUSE LATERAL ON THE GRADE SHEET.
  - NO REVISIONS SHALL BE MADE IN THESE PLANS WITHOUT THE APPROVAL OF THE COUNTY ENGINEER.
  - USE STANDARD MANHOLE FRAMES AND COVERS, S-117.
  - USE STANDARD STRENGTH PIPE EXCEPT AS NOTED.
  - USE CEMENT MORTAR OR "WEDGE-LOCK" OR "SPEED-SEAL" FOR ALL V.C.P. JOINTS PER SPEC., SECS. 16 & 44.
  - RESURFACE ALL TRENCH WITHIN PAVED AREA TO MEET L.A. COUNTY ROAD DEPT. OR CALIF. STATE HIGHWAY REQUIREMENTS IN ACCORDANCE WITH PERMITS.
  - ENCASE FOUR FEET OF SEWER AT POINTS OF INTERFERENCE WITH POLES, CASE III, S-172.
  - HOUSE LATERALS TO BE CONSTRUCTED WITH INVERTS AT PROPERTY LINE 6 FEET BELOW CURB GRADE.
  - ALL STRUCTURES SHALL BE BRICK SEWER STRUCTURES, S-104.
  - FOR ALLOWABLE LEAKAGE TEST USE FORMULA NO. 1, SPEC., SEC. 54.
  - MANHOLE TOPS IN UNIMPROVED RIGHTS-OF-WAY TO BE SIX INCHES ABOVE FINISHED GRADE.
  - THE CONTRACTOR SHALL NOTIFY THE CONSTRUCTION & STORM DRAIN DIVISION BY TELEPHONE, MADISON 9-4747, EXT. 2851 AT LEAST TWENTY-FOUR HOURS BEFORE STARTING ANY WORK UNDER THIS CONTRACT.
  - STANDARD SPECIFICATIONS DATED OCT. 10, 1960 SHALL APPLY IN THE CONSTRUCTION OF THIS PROJECT.

NOTE:  
 GRADES TO WHICH THIS IMPROVEMENT IS TO BE CONSTRUCTED ARE SHOWN ON PLANS AND PROFILES. GRADE POINTS FOR TOP OF CURBS, CENTER LINE OF STREETS, OR CENTER LINE OF ALLEYS ARE SHOWN BY CIRCLES ON PROFILES. AT ALL POINTS BETWEEN DESIGNATED POINTS THE GRADE SHALL BE ESTABLISHED SO AS TO CONFORM TO A STRAIGHT LINE DRAWN BETWEEN SAID DESIGNATED POINTS.  
 ELEVATIONS ARE IN FEET ABOVE U.S.C. & G.S. SEA LEVEL DATUM OF 1929.  
 THIS DRAWING AND THE DATA HEREON ARE HEREBY MADE A PART OF THE SPECIFICATIONS.  
 WORK SHALL BE CONSTRUCTED ACCORDING TO SPECIFICATIONS ON FILE IN THE OFFICE OF THE COUNTY ENGINEER AND SHALL BE PROSECUTED ONLY IN THE PRESENCE OF THE COUNTY ENGINEER.  
 BEFORE WORK CAN BE STARTED THE CONTRACTOR MUST OBTAIN A PERMIT TO EXCAVATE IN COUNTY STREETS FROM THE L.A. COUNTY ROAD DIST. DISTRICT OFFICE NO. 7 AND PAY A FEE TO THE COUNTY ENGINEER ROOM 310 103 W. SECOND STREET SUFFICIENT TO COVER THE COST OF CONSTRUCTION INSPECTION AND RECORD PLANS.  
 APPROVAL OF THIS PLAN BY THE COUNTY OF LOS ANGELES DOES NOT CONSTITUTE A REPRESENTATION AS TO THE ACCURACY OF THE LOCATION OF OR THE EXISTENCE OR NON-EXISTENCE OF ANY UNDERGROUND UTILITY PIPE, OR STRUCTURE WITHIN THE LIMITS OF THIS PROJECT. THIS NOTE APPLIES TO ALL PAGES.  
 IF WORK IS TO BE DONE IN A STATE HIGHWAY, A PERMIT MUST BE OBTAINED FROM THE STATE OF CALIFORNIA, DIVISION OF HIGHWAYS, 120 SOUTH SPRING STREET.

NO CHARGE FOR CONNECTIONS  
 J.K. Wiles 7-7-61

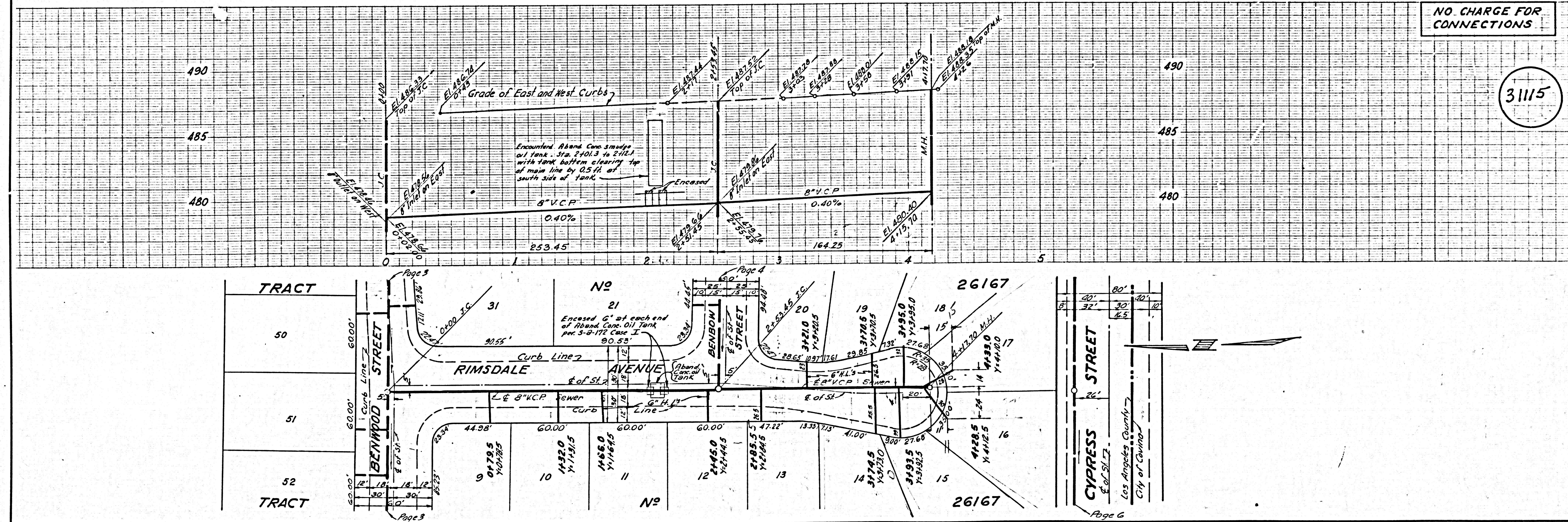
REVISION Oct. 3, 1961  
 1. From Sta. 1130.00 to 5128.94 removed 1/2-right and added H.L.'s at Stations 1141.317, 3179 and 6109.  
 2. Moved M.H. of Sta. 3125.00 on Benwood St. to Sta. 3104.44 and Added 8" Slab to South.  
 3. Added Additional 12" Main Line Sewer in Cypress St. from Sta. 2146.21 to Sta. 4142.50 plus Yard H.L. to P.L.  
 W.C. Coindate 10-4-61  
 San Dimas Regional Engineer

NO CONNECTIONS FOR THE DISPOSAL OF INDUSTRIAL WASTES SHALL BE MADE TO SEWERS SHOWN ON THESE DRAWINGS WITHOUT WRITTEN PERMISSION FROM THE CHIEF ENGINEER AND GENERAL MANAGER OF THE COUNTY SANITATION DISTRICTS.

COUNTY OF LOS ANGELES, CALIFORNIA  
 APPROVED, JOHN A. LAMBIE, COUNTY ENGINEER  
 APPROVED, C.R. COMPTON, CHIEF ENGINEER  
 BY [Signature] ASST. SANITATION ENGINEER  
 BY [Signature] OFFICE ENGINEER  
 CHECKED BY J.K. Wiles 7-7-61  
 OFFICE OF COUNTY ENGINEER, REG. C. E. NO. 9466

SUBMITTED: W.C. Coindate  
 SAN DIMAS REGIONAL ENGINEER

P.C. 5751 PAGE 2  
 NO CHARGE FOR CONNECTIONS

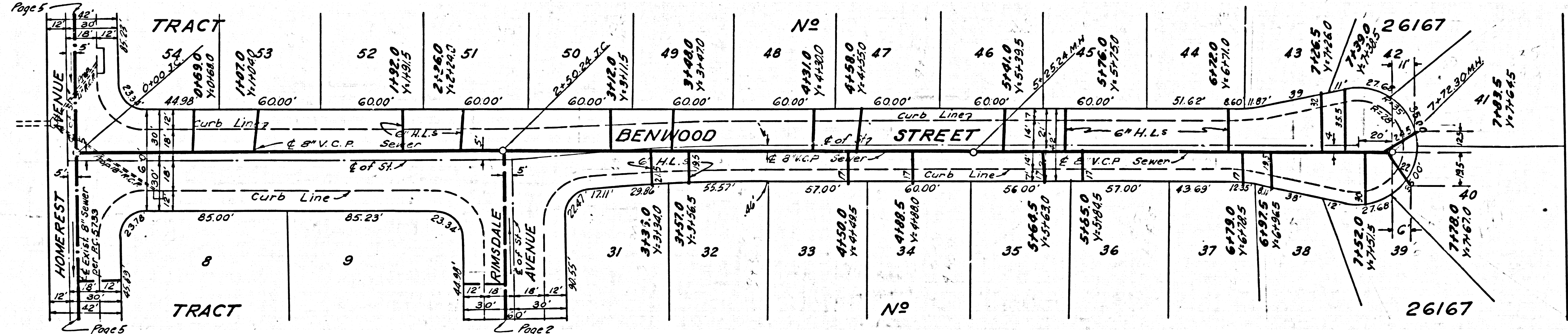
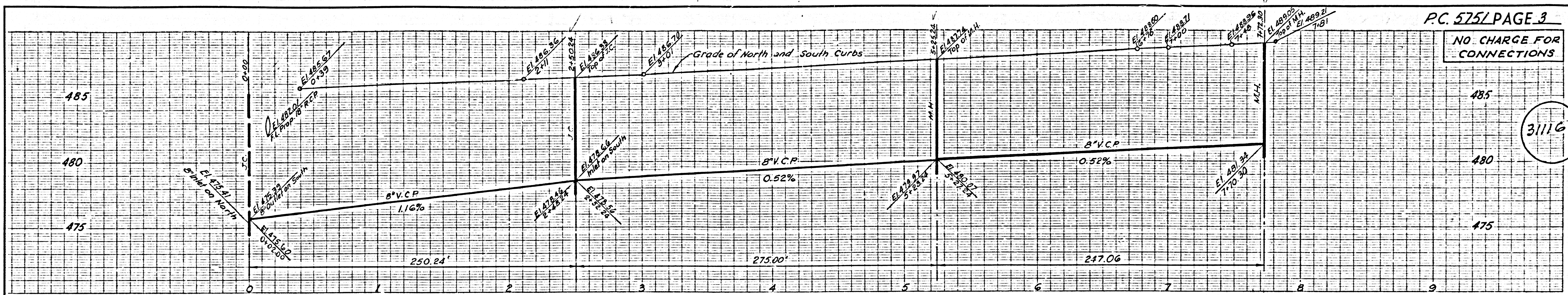


31115



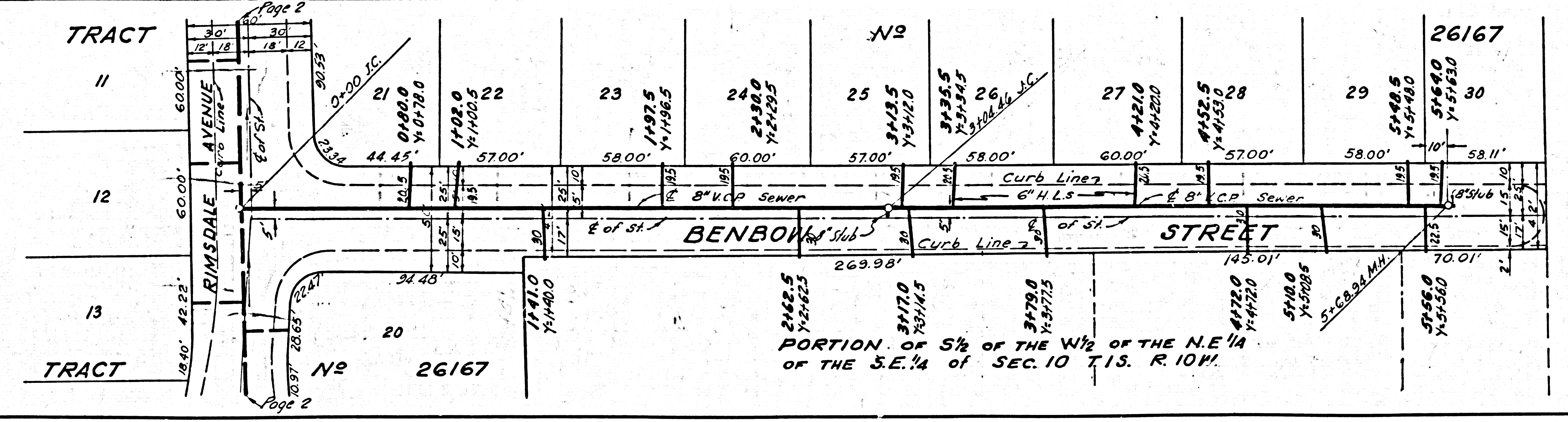
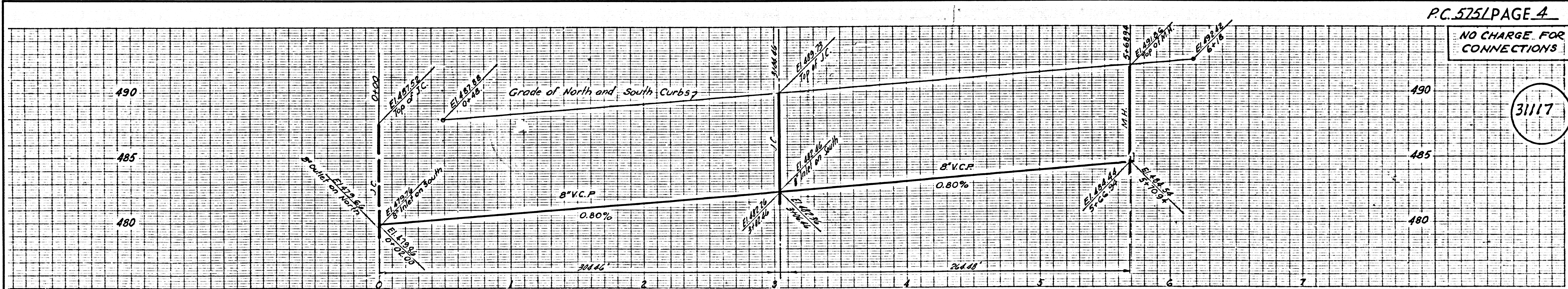
NO CHARGE FOR CONNECTIONS

31116



NO CHARGE FOR CONNECTIONS

31117

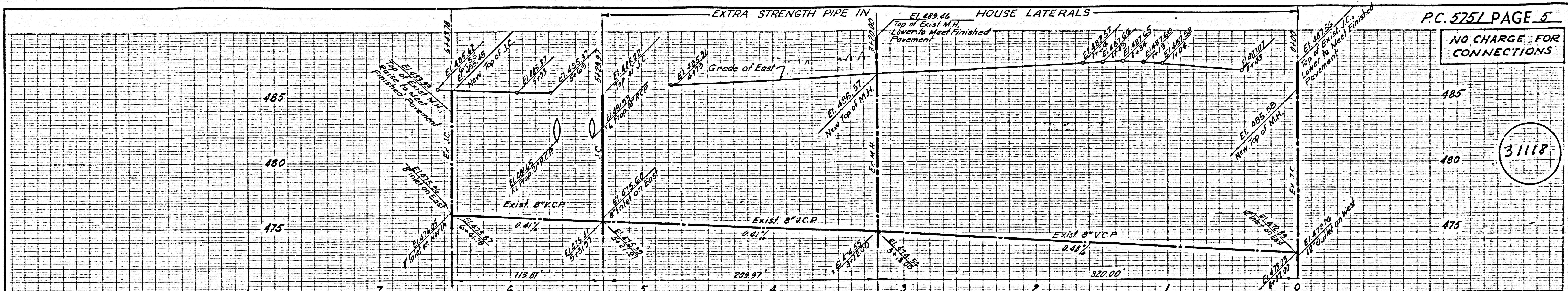


PORTION OF S 1/2 OF THE W 1/2 OF THE N E 1/4 OF THE S E 1/4 OF SEC. 10 T. 15. R. 10 W.

REVISED 10-2-61

31116  
31117  
L. B. CL. NO. 50125 P.C. 2321

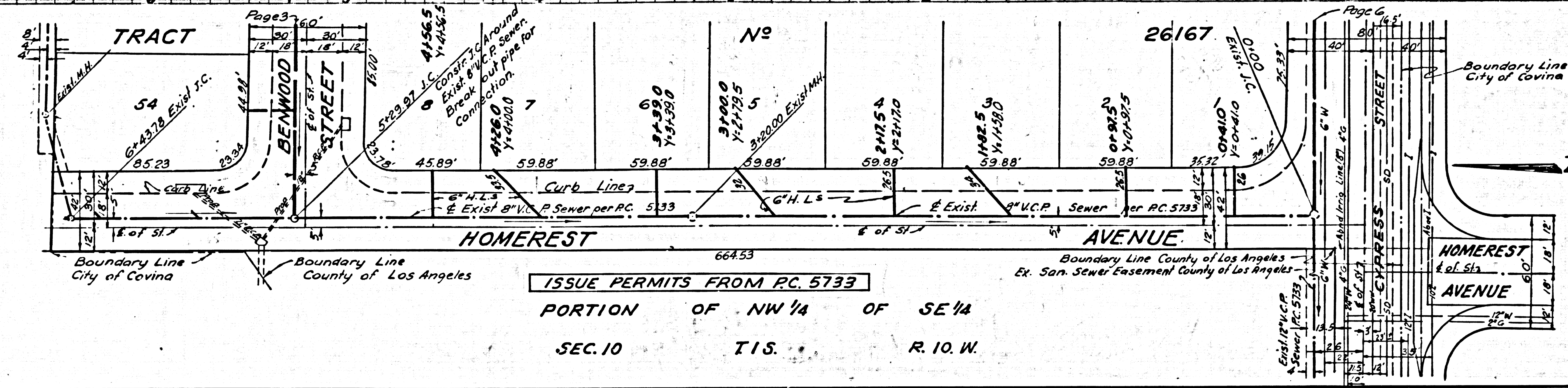




PC 5751 PAGE 5

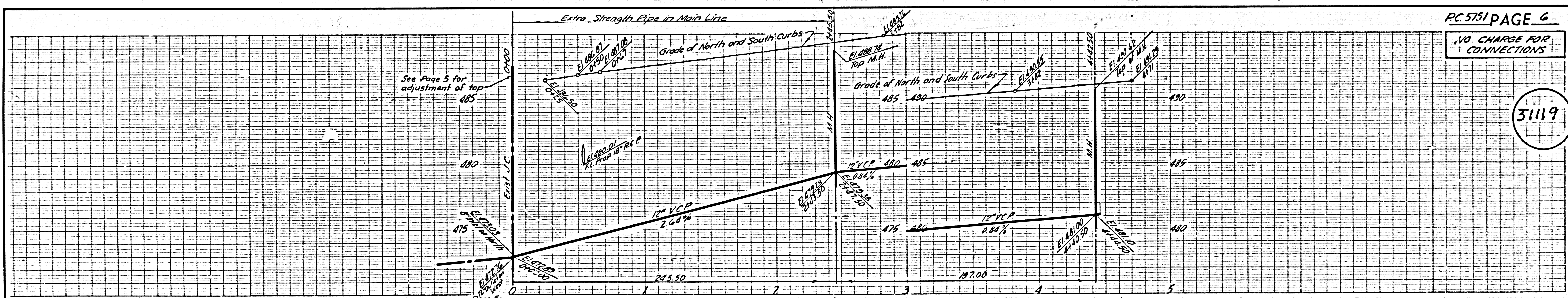
NO CHARGE FOR CONNECTIONS

31118



ISSUE PERMITS FROM PC 5733

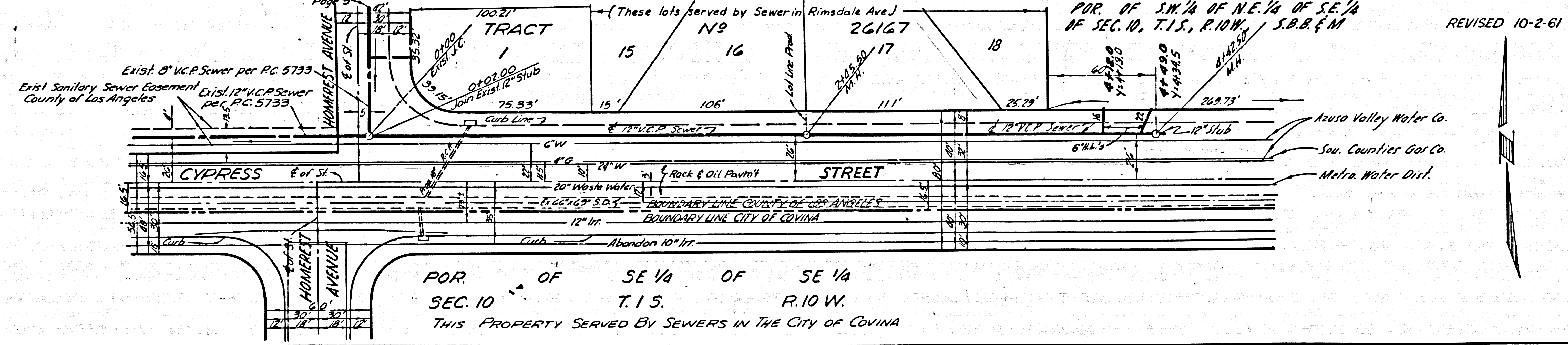
PORTION OF NW 1/4 OF SE 1/4  
SEC. 10 T. 1 S. R. 10 W.



PC 5751 PAGE 6

NO CHARGE FOR CONNECTIONS

31119



PORTION OF SE 1/4 OF SE 1/4  
SEC. 10 T. 1 S. R. 10 W.  
THIS PROPERTY SERVED BY SEWERS IN THE CITY OF COVINA