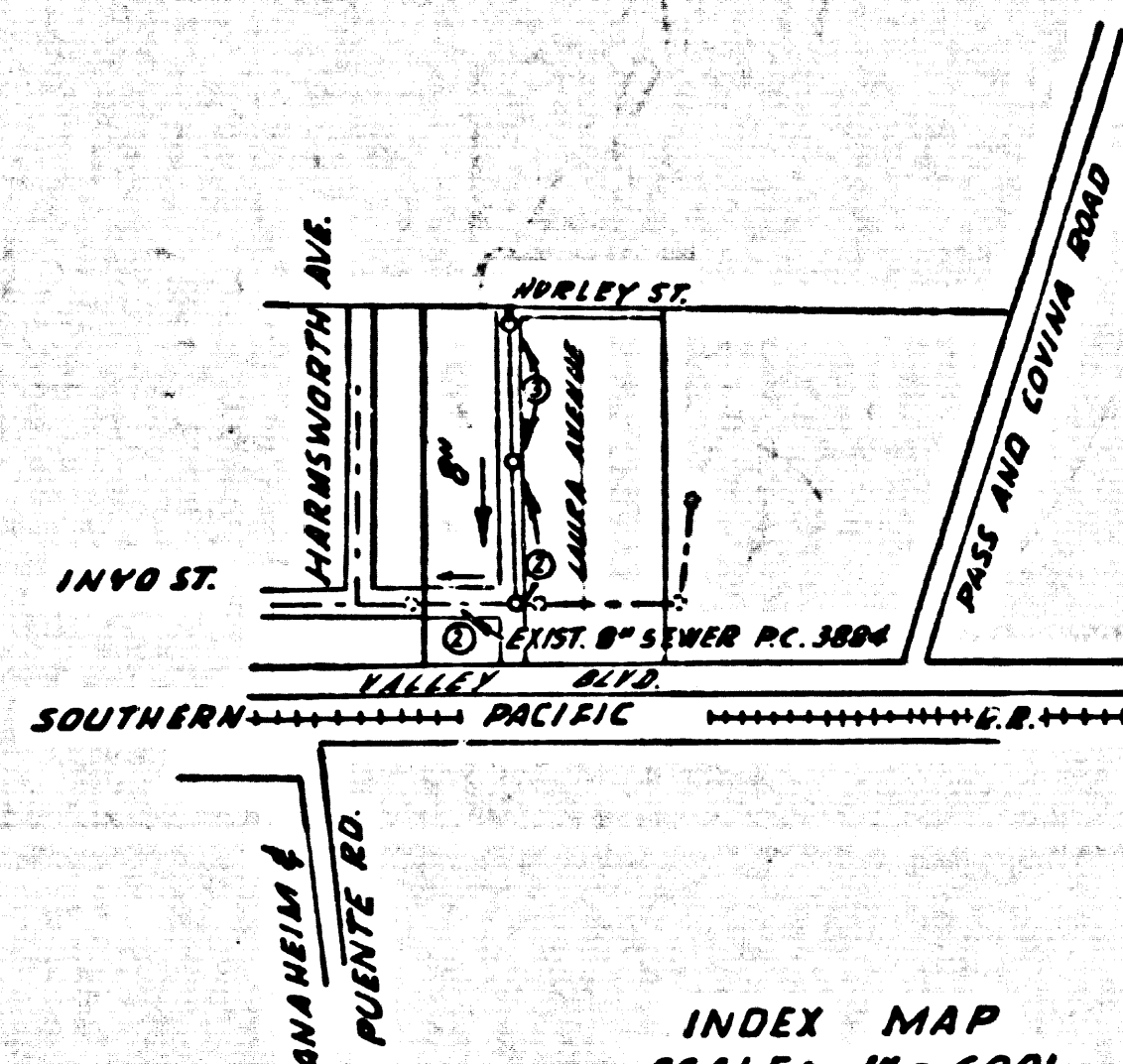


BENCH MARK: **56 1380**  
 1/4" CENTER OF NORTH CONCRETE HEADWALL  
 ± 10' W OF CENTERLINE OF PASS & COVINA RD.  
 ± 50' NORTH OF DRIVEWAY TO HOUSE # 415 PASS  
 & COVINA RD. OPPOSITE P.P. # 646341-E.  
 PUENTE QUAD 1955 ADJUSTMENT

ELEV. 409.163



INDEX MAP  
 SCALE: 1" = 600'  
 P.C. 5753

LA PUENTE BLDG. DIST. NO. 2.02

NOTES:

1. PROVIDE STAKES ON THE PROPERTY LINE OR PROPERTY LINES PRODUCED AT RIGHT ANGLES TO THE SEWER LINE AT THE CENTER LINE OF EACH MANHOLE.
2. NO REPRESENTATIVE OF THE CITY ENGINEER WILL SURVEY OR LAY OUT ANY PORTION OF THE WORK.
3. THE OWNER OR HIS AUTHORIZED REPRESENTATIVE SHALL FURNISH THE CITY ENGINEER WITH GRADE SHEETS AND STATIONING FOR ALL HOUSE LATERALS AND Y BRANCHES AND SHALL PROVIDE STAKES FOR THEM AT THEIR PROPER LOCATIONS WITH STATIONING PLAINLY MARKED. ANY CHANGE IN LOCATION SHALL BE REQUESTED IN WRITING BY THE OWNER OR HIS REPRESENTATIVE.
4. THE PRIVATE ENGINEER SHALL FURNISH THE HOUSE LATERAL DEPTH AT THE PROPERTY LINE BELOW THE TOP OF CURB ELEVATION FOR EACH HOUSE LATERAL ON THE GRADE SHEET.
5. NO REVISIONS SHALL BE MADE IN THESE PLANS WITHOUT THE APPROVAL OF THE CITY ENGINEER.
6. USE STANDARD MANHOLE FRAMES AND COVERS, S-117A.
7. USE STANDARD STRENGTH PIPE EXCEPT AS NOTED.
8. USE CEMENT MORTAR OR "WEDGE-LOCK" OR "SPEED-SEAL" FOR ALL V.C.P. JOINTS PER SPECS, SECS. 34 & 48.
9. RESURFACE ALL TRENCH WITHIN PAVED AREA TO MEET L.A. COUNTY ROAD DEPT. OR CALIF. STATE HIGHWAY REQUIREMENTS IN ACCORDANCE WITH PERMITS.
10. ENCASE FOUR FEET OF SEWER AT POINTS OF INTERFERENCE WITH POWER, CASE III, S-172.
11. HOUSE LATERALS TO BE CONSTRUCTED WITH INVERTS AT PROPERTY LINE 6 FEET BELOW CURB GRADE.
12. ALL STRUCTURES SHALL BE BRICK SEWER STRUCTURES, S-104.
13. FOR ALLOWABLE LEAKAGE TEST USE FORMULA NO. 1, SPECS, SEC. 54.
14. MANHOLE TOPS IN UNIMPROVED RIGHTS-OF-WAY TO BE SIX INCHES ABOVE FINISHED GRADE.
15. THE CONTRACTOR SHALL NOTIFY THE CONSTRUCTION DIVISION BY TELEPHONE, MADISON 5-470, EXT. 1100, AT LEAST TWENTY-FOUR HOURS BEFORE STARTING ANY WORK UNDER THIS CONTRACT.
16. ALL MATERIAL SPECIFICATIONS SHALL BE IN ACCORDANCE WITH THE SPECIFICATIONS OF THE SUBJECT.

NO CONNECTIONS FOR THE DISPOSAL OF INDUSTRIAL WASTES SHALL BE MADE TO SEWERS SHOWN ON THESE DRAWINGS WITHOUT WRITTEN PERMISSION FROM THE CHIEF ENGINEER AND GENERAL MANAGER OF THE COUNTY SANITATION DISTRICTS.

NO CHARGE FOR CONNECTIONS  
 7. 770 2-2-61

ISSUE NO PERMITS UNTIL INYO STREET AND LAURA AVENUE ARE DEDICATED.

CITY OF LA PUENTE  
 APPROVED: [Signature] 2-2-61  
 CITY MANAGER

PROFILE ALIGNMENT AND GRADE OF P.C. 5753  
 SANITARY SEWERS PAGE 1  
 TO BE CONSTRUCTED IN  
 LAURA AVENUE

PRIVATE CONTRACT NO. 5753

W.S. 38  
 2 SHEETS, 3 PAGES  
 SCALE: VERT. 1" = 4' FEBRUARY, 1961  
 PREPARED IN THE OFFICES OF  
 NATIONAL ENGINEERING CO.

BY: [Signature] REG. C. E. NO. 5828  
 FOR LEGEND SEE PLAN NO. S-A-64

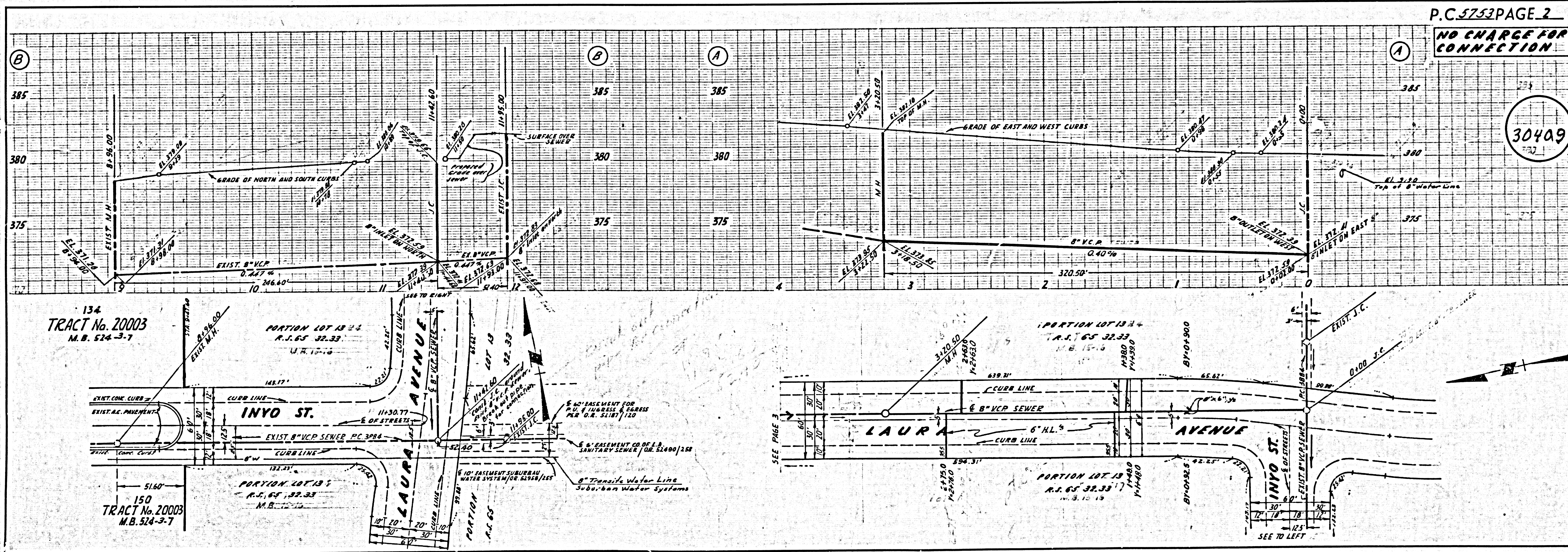
30408

NOTE: GRADES TO WHICH THIS IMPROVEMENT IS TO BE CONSTRUCTED ARE SHOWN ON PLANS AND PROFILES. GRADE POINTS FOR TOP OF CURBS, CENTER LINE OF STREETS, OR CENTER LINE OF ALLEYS ARE SHOWN BY CIRCLES ON PROFILES. AT ALL POINTS BETWEEN DESIGNATED POINTS THE GRADE SHALL BE ESTABLISHED SO AS TO CONFORM TO A STRAIGHT LINE DRAWN BETWEEN SAID DESIGNATED POINTS. ELEVATIONS ARE IN FEET ABOVE U.S.C. & G.S. SEA LEVEL DATUM OF 1929. THIS DRAWING AND THE DATA HEREON ARE HEREBY MADE A PART OF THE SPECIFICATIONS. WORK SHALL BE CONSTRUCTED ACCORDING TO SPECIFICATIONS ON FILE IN THE OFFICE OF THE CITY ENGINEER AND SHALL BE PROSECUTED ONLY IN THE PRESENCE OF THE CITY ENGINEER. BEFORE WORK CAN BE STARTED, THE CONTRACTOR MUST OBTAIN A PERMIT TO EXCAVATE IN CITY STREETS FROM THE L.A. COUNTY ROAD DEPT., DISTRICT OFFICE NO. 1, AND MUST OBTAIN A PERMIT TO EXCAVATE IN CITY ALLEYS FROM THE L.A. COUNTY ROAD DEPT., DISTRICT OFFICE NO. 2. THE CONTRACTOR SHALL BE RESPONSIBLE FOR OBTAINING ALL NECESSARY PERMITS AND SHALL BE RESPONSIBLE FOR COVERING THE COST OF CONSTRUCTION INSPECTION AND RECORD PLANS. APPROVAL OF THIS PLAN BY THE CITY OF LA PUENTE DOES NOT CONSTITUTE A REPRESENTATION AS TO THE ACCURACY OF THE LOCATION OF OR THE EXISTENCE OR NON-EXISTENCE OF ANY UNDERGROUND UTILITY PIPE, OR STRUCTURE WITHIN THE LIMITS OF THIS PROJECT. THIS NOTE APPLIES TO ALL PAGES. IF WORK IS TO BE DONE IN A STATE HIGHWAY, A PERMIT MUST BE OBTAINED FROM THE STATE OF CALIFORNIA, DIVISION OF HIGHWAYS, 128 SOUTH SPRING STREET.

CITY OF LA PUENTE, CALIFORNIA  
 APPROVED, JOHN A. LAMBIE, CITY ENGINEER APPROVED, C. R. COMPTON, CHIEF ENGINEER  
 DIST. SAN. DIST. NO. 21

BY: [Signature] ASST. SANITATION ENGINEER BY: [Signature] OFFICE ENGINEER  
 CHECKED BY: [Signature] 2-15-61  
 OFFICE OF CITY ENGINEER, REG. C. E. NO. 11636

FORWARDED: W. C. Reindexter  
 JAWANAS REGIONAL ENGINEER



P.C. 5753 PAGE 2  
 NO CHARGE FOR CONNECTION

30409

134 TRACT No. 20003  
 M.B. 524-3-7

150 TRACT No. 20003  
 M.B. 524-3-7

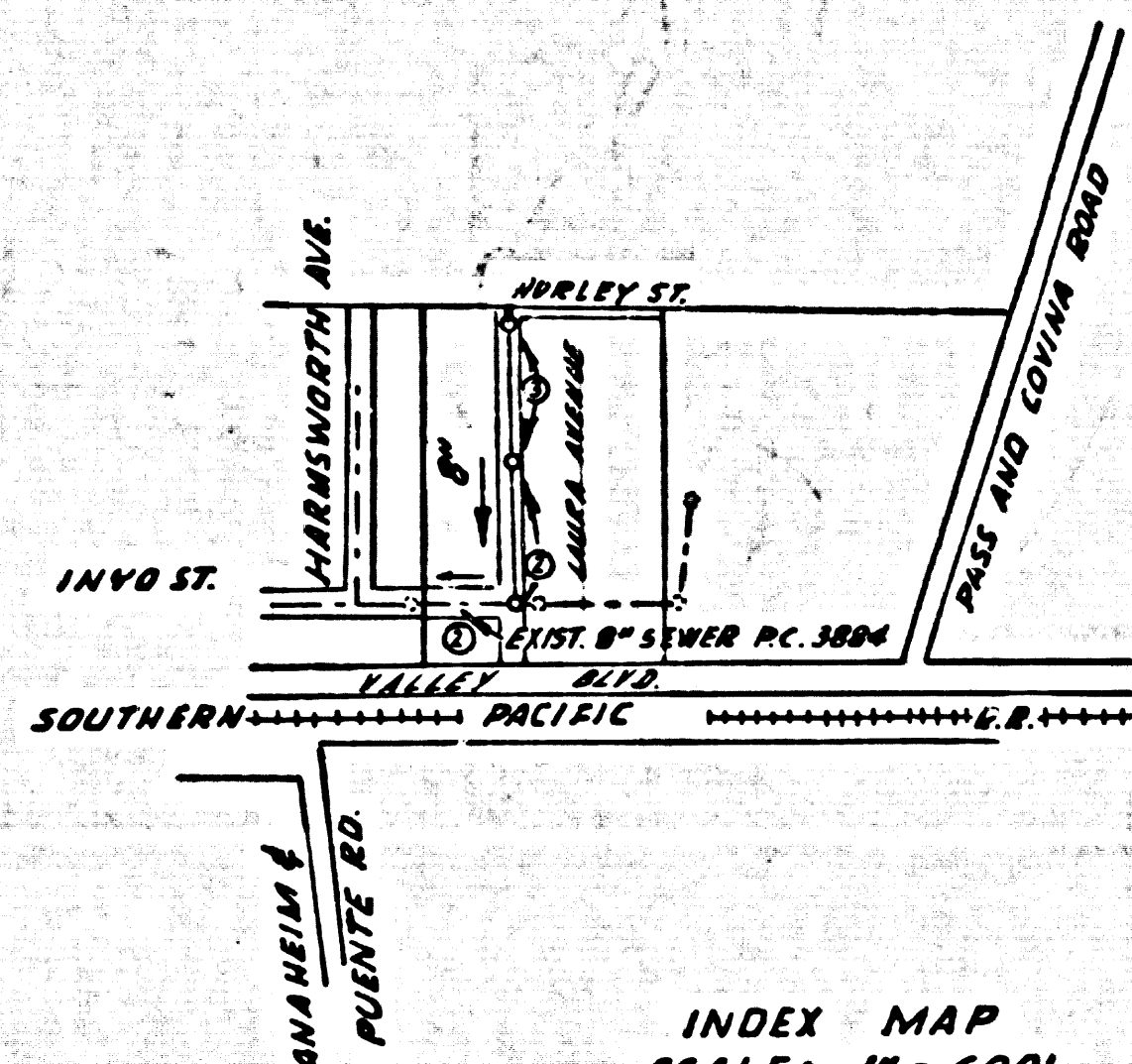
PORTION LOT 13 1/4  
 R.S. 65 32.33  
 M.B. 15-5

PORTION LOT 13  
 R.S. 65 32.33  
 M.B. 15-5



BENCH MARK: **56 1380**  
 1/4" CENTER OF NORTH CONCRETE HEADWALL  
 ± 10' W OF CENTERLINE OF PASS & COVINA RD.  
 ± 50' NORTH OF DRIVEWAY TO HOUSE # 415 PASS  
 & COVINA RD. OPPOSITE P.P. # 646341-E.  
 PUENTE QUAD 1955 ADJUSTMENT

**ELEV. 409.163**



INDEX MAP  
 SCALE: 1" = 600'  
 P.C. 5753

**LA PUENTE BLDG. DIST. NO. 2.02**

**NOTES:**

1. PROVIDE STAKES ON THE PROPERTY LINE OR PROPERTY LINES PRODUCED AT RIGHT ANGLES TO THE SEWER LINE AT THE CENTER LINE OF EACH MANHOLE.
2. NO REPRESENTATIVE OF THE CITY ENGINEER WILL SURVEY OR LAY OUT ANY PORTION OF THE WORK.
3. THE OWNER OR HIS AUTHORIZED REPRESENTATIVE SHALL FURNISH THE CITY ENGINEER WITH GRADE SHEETS AND STATIONING FOR ALL HOUSE LATERALS AND Y BRANCHES AND SHALL PROVIDE STAKES FOR THEM AT THEIR PROPER LOCATIONS WITH STATIONING PLAINLY MARKED. ANY CHANGE IN LOCATION SHALL BE REQUESTED IN WRITING BY THE OWNER OR HIS REPRESENTATIVE.
4. THE PRIVATE ENGINEER SHALL FURNISH THE HOUSE LATERAL DEPTH AT THE PROPERTY LINE BELOW THE TOP OF CURB ELEVATION FOR EACH HOUSE LATERAL ON THE GRADE SHEET.
5. NO REVISIONS SHALL BE MADE IN THESE PLANS WITHOUT THE APPROVAL OF THE CITY ENGINEER.
6. USE STANDARD MANHOLE FRAMES AND COVERS, S-117A.
7. USE STANDARD STRENGTH PIPE EXCEPT AS NOTED.
8. USE CEMENT MORTAR OR "WEDGE-LOCK" OR "SPEED-SEAL" FOR ALL V.C.P. JOINTS PER SPECS, SECS. 34 & 48.
9. RESURFACE ALL TRENCH WITHIN PAVED AREA TO MEET L.A. COUNTY ROAD DEPT. OR CALIF. STATE HIGHWAY REQUIREMENTS IN ACCORDANCE WITH PERMITS.
10. ENCASE FOUR FEET OF SEWER AT POINTS OF INTERFERENCE WITH POWER, CASE III, S-172.
11. HOUSE LATERALS TO BE CONSTRUCTED WITH INVERTS AT PROPERTY LINE 6 FEET BELOW CURB GRADE.
12. ALL STRUCTURES SHALL BE BRICK SEWER STRUCTURES, S-104.
13. FOR ALLOWABLE LEAKAGE TEST USE FORMULA NO. 1, SPECS, SEC. 54.
14. MANHOLE TOPS IN UNIMPROVED RIGHTS-OF-WAY TO BE SIX INCHES ABOVE FINISHED GRADE.
15. THE CONTRACTOR SHALL NOTIFY THE CONSTRUCTION DIVISION BY TELEPHONE, MADISON 5-470, EXT. 1100, AT LEAST TWENTY-FOUR HOURS BEFORE STARTING ANY WORK UNDER THIS CONTRACT.
16. ALL MATERIAL SPECIFICATIONS SHALL BE IN ACCORDANCE WITH THE SPECIFICATIONS OF THE SUBJECT.

NO CONNECTIONS FOR THE DISPOSAL OF INDUSTRIAL WASTES SHALL BE MADE TO SEWERS SHOWN ON THESE DRAWINGS WITHOUT WRITTEN PERMISSION FROM THE CHIEF ENGINEER AND GENERAL MANAGER OF THE COUNTY SANITATION DISTRICTS.

NO CHARGE FOR CONNECTIONS  
 7. 770 2-2-61

ISSUE NO PERMITS UNTIL INYO STREET AND LAURA AVENUE ARE DEDICATED.

PROFILE ALIGNMENT AND GRADE OF **P.C. 5753**

**SANITARY SEWERS PAGE 1**

TO BE CONSTRUCTED IN

**LAURA AVENUE**

PRIVATE CONTRACT NO. **5753**

W.S. 38

2 SHEETS, 3 PAGES

SCALE: VERT. 1" = 4' FEBRUARY, 1961

PREPARED IN THE OFFICES OF

NATIONAL ENGINEERING CO.

By: **E. J. Eppner**  
 REG. C. E. NO. 5828

FOR LEGEND SEE PLAN NO. S-A-64

30408

NOTE: GRADES TO WHICH THIS IMPROVEMENT IS TO BE CONSTRUCTED ARE SHOWN ON PLANS AND PROFILES. GRADE POINTS FOR TOP OF CURBS, CENTER LINE OF STREETS, OR CENTER LINE OF ALLEYS ARE SHOWN BY CIRCLES ON PROFILES. AT ALL POINTS BETWEEN DESIGNATED POINTS THE GRADE SHALL BE ESTABLISHED SO AS TO CONFORM TO A STRAIGHT LINE DRAWN BETWEEN SAID DESIGNATED POINTS. ELEVATIONS ARE IN FEET ABOVE U.S.C. & G.S. SEA LEVEL DATUM OF 1929. THIS DRAWING AND THE DATA HEREON ARE HEREBY MADE A PART OF THE SPECIFICATIONS. WORK SHALL BE CONSTRUCTED ACCORDING TO SPECIFICATIONS ON FILE IN THE OFFICE OF THE CITY ENGINEER AND SHALL BE PROSECUTED ONLY IN THE PRESENCE OF THE CITY ENGINEER. BEFORE WORK CAN BE STARTED, THE CONTRACTOR MUST OBTAIN A PERMIT TO EXCAVATE IN CITY STREETS FROM THE L.A. COUNTY ROAD DEPT., DISTRICT OFFICE NO. 1, AND PERMIT TO EXCAVATE IN STATE HIGHWAYS FROM THE CALIF. STATE HIGHWAY DEPT., DISTRICT OFFICE NO. 1, AND PERMIT TO EXCAVATE IN STATE HIGHWAYS FROM THE CALIF. STATE HIGHWAY DEPT., DIVISION OF HIGHWAYS, 128 SOUTH SPRING STREET. APPROVAL OF THIS PLAN BY THE CITY OF LA PUENTE DOES NOT CONSTITUTE A REPRESENTATION AS TO THE ACCURACY OF THE LOCATION OF OR THE EXISTENCE OR NON-EXISTENCE OF ANY UNDERGROUND UTILITY PIPE, OR STRUCTURE WITHIN THE LIMITS OF THIS PROJECT. THIS NOTE APPLIES TO ALL PAGES. IF WORK IS TO BE DONE IN A STATE HIGHWAY, A PERMIT MUST BE OBTAINED FROM THE STATE OF CALIFORNIA, DIVISION OF HIGHWAYS, 128 SOUTH SPRING STREET.

**CITY OF LA PUENTE, CALIFORNIA**

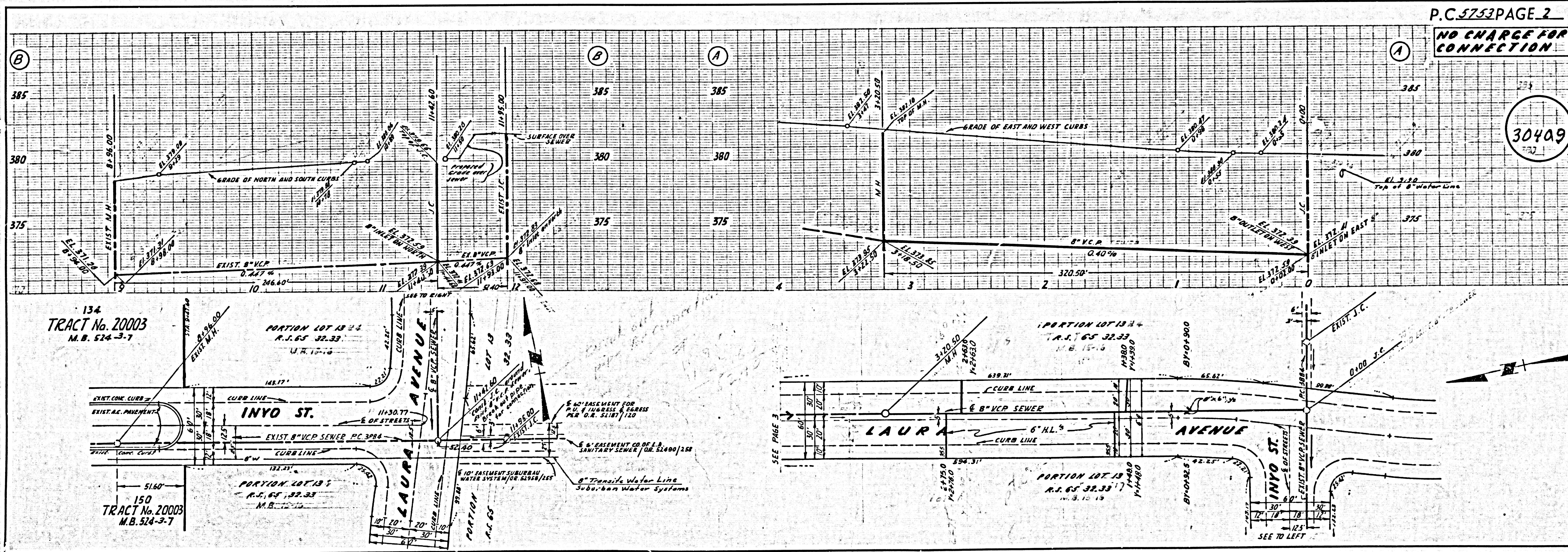
APPROVED, JOHN A. LAMBIE, CITY ENGINEER APPROVED, C. R. COMPTON, CHIEF ENGINEER  
 DIST. SAN. DIST. NO. 21

By: **E. J. Eppner** DIST. SANITATION ENGINEER By: **W. G. Reindexter** OFFICE ENGINEER

CHECKED BY: **B. T. Worley** 2-15-61  
 OFFICE OF CITY ENGINEER, REG. C. E. NO. 11636

FOR LEGEND SEE PLAN NO. S-A-64  
 SUBMITTED: **W. G. Reindexter**  
 JAWNIAS REGIONAL ENGINEER

CITY OF LA PUENTE  
 APPROVED: **Richard D. ...** 2-2-61  
 CITY MANAGER



P.C. 5753 PAGE 2

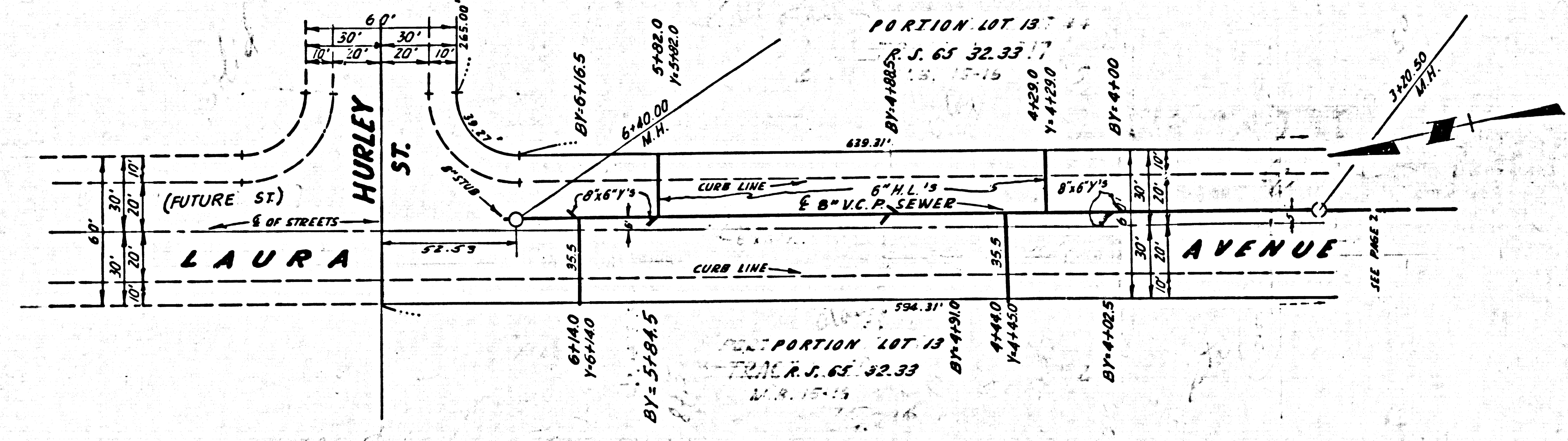
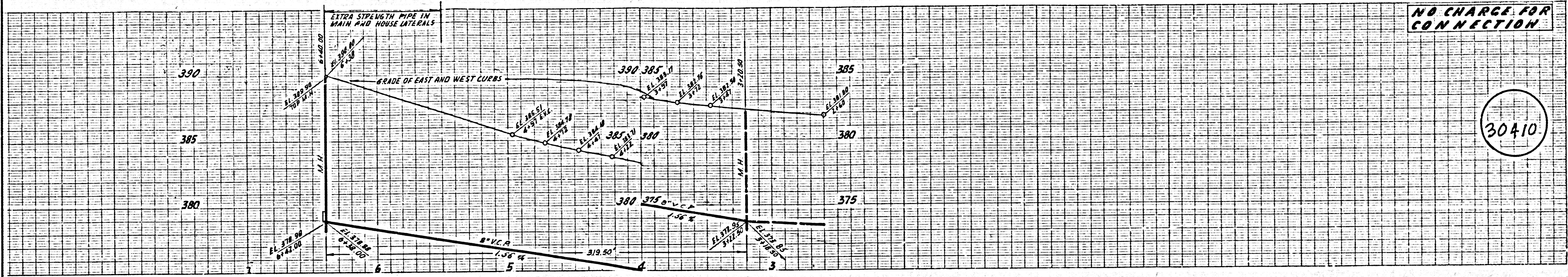
NO CHARGE FOR CONNECTION

30409



NO CHARGE FOR CONNECTION

30410



*None of the...  
...  
...*

30410