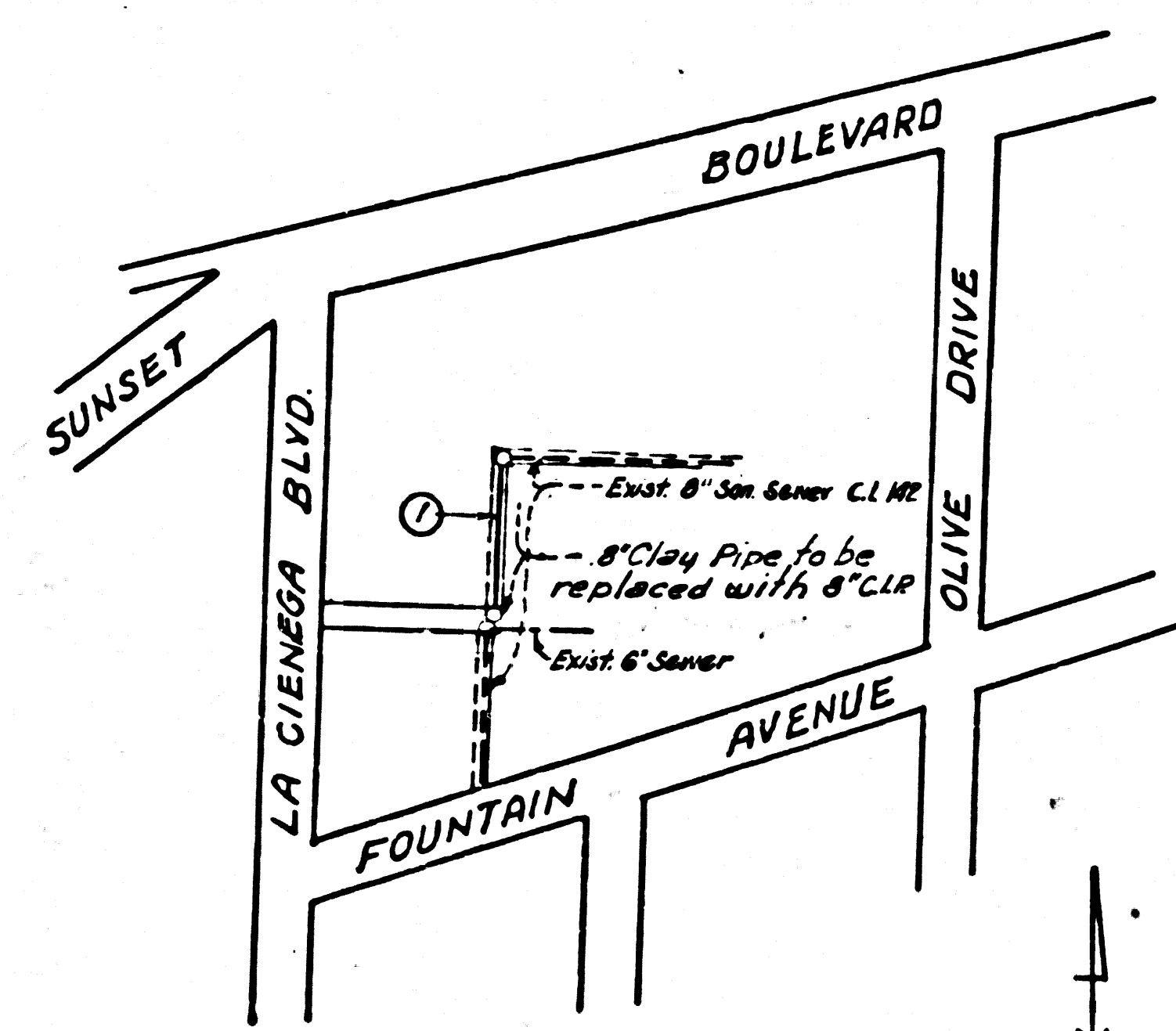
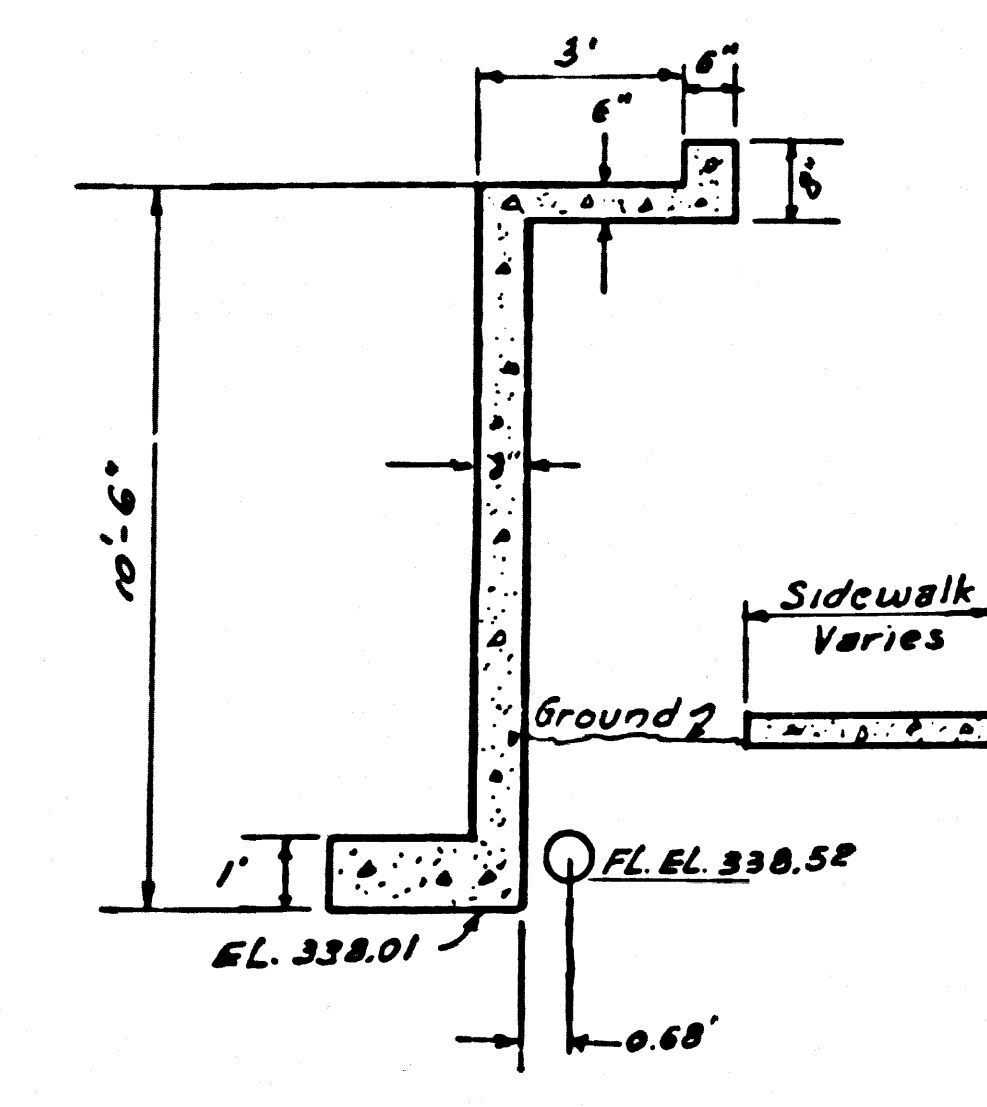


BENCH MARK
 Santa Monica Blvd. & La Cienega Blvd.
 N.E. Cor. "Square" N.O.R.
 F.B. 2197-11 Adj. Elev. 238.426

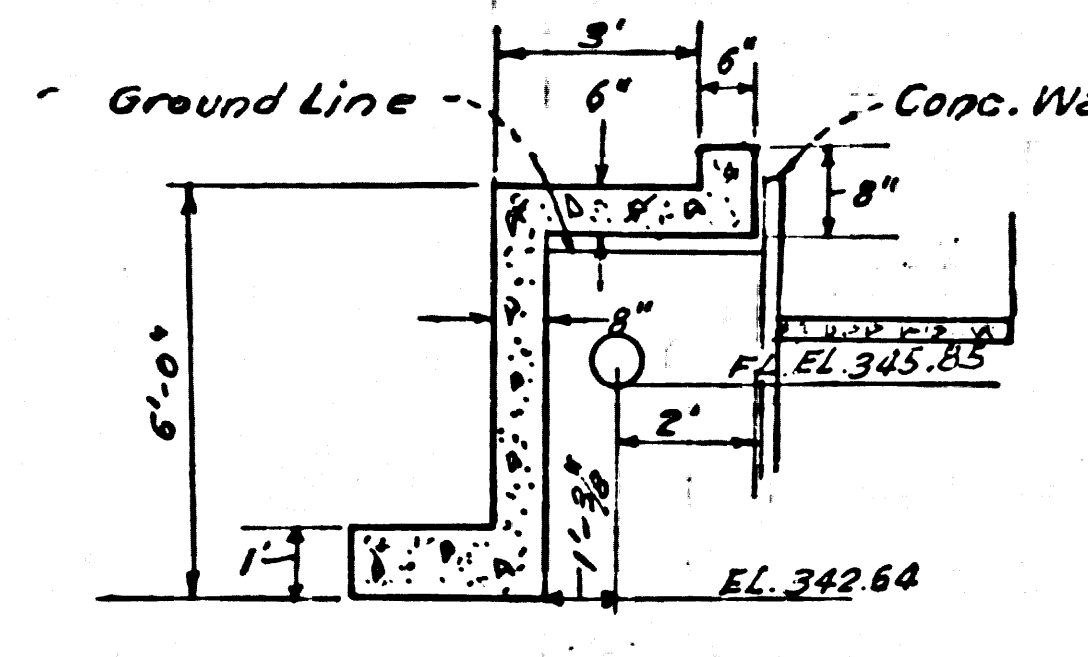
BENCH MARK
 Sunset Blvd N. curb, wire spike in Cb.
 20' W. of W. Curb of Kings Road at E. end C.B.
 F.B. 2197-22 Adj. Elev. 338.528



INDEX MAP
 Scale 1"=200'
 RUSH TRACT
 P.C. 5755



SECTION AT 2+39.10
 Scale 1"=4'



SECTION AT 3+05.00
 Scale 1"=4'

DOUBLE SCALE
WEST HOLLYWOOD BLDG. DIST. NO. 9

- NOTES:
1. PROVIDE STAKES ON THE PROPERTY LINE OR PROPERTY LINES PRODUCED AT RIGHT ANGLES TO THE SEWER LINE AT THE CENTER LINE OF EACH MANHOLE.
 2. NO REPRESENTATIVE OF THE COUNTY ENGINEER WILL SURVEY OR LAY OUT ANY PORTION OF THE WORK.
 3. THE OWNER OR HIS AUTHORIZED REPRESENTATIVE SHALL FURNISH THE COUNTY ENGINEER WITH GRADE SHEETS AND STATIONING FOR ALL HOUSE LATERALS AND T BRANCHES AND SHALL PROVIDE STAKES FOR THEM AT THEIR PROPER LOCATIONS WITH STATIONING PLAINLY MARKED. ANY CHANGE IN LOCATION SHALL BE REQUESTED IN WRITING BY THE OWNER OR HIS REPRESENTATIVE.
 4. THE PRIVATE ENGINEER SHALL FURNISH THE HOUSE LATERAL DEPTH AT THE PROPERTY LINE BELOW THE TOP OF CURB ELEVATION FOR EACH HOUSE LATERAL ON THE GRADE SHEET.
 5. NO REVISIONS SHALL BE MADE IN THESE PLANS WITHOUT THE APPROVAL OF THE COUNTY ENGINEER.
 6. USE STANDARD MANHOLE FRAMES AND COVERS, S-131.
 7. USE 8" C.I.P. (CLASS 150 CENTRIC DUCT).
 8. USE OAKUM AND LEAD ON ALL CAST IRON PIPE JOINTS PER SPECS. SECS. 35.
 9. RESURFACE ALL TRENCH WITHIN PAVED AREA TO MEET L.A. COUNTY ROAD DEPT. OR CALIF. STATE HIGHWAY REQUIREMENTS IN ACCORDANCE WITH PERMITS.
 10. ENCASE FOUR FEET OF SEWER AT POINTS OF INTERFERENCE WITH POLES, CASE III, S-172.
 11. ALL STRUCTURES SHALL BE BRICK SEWER STRUCTURES, S-1-130.
 12. FOR ALLOWABLE LEAKAGE TEST USE FORMULA NO. 1, SPECS. SEC. 54.
 13. MANHOLE COPIES IN UNIMPROVED RIGHTS-OF-WAY TO BE SIX INCHES ABOVE FINISHED GRADE.
 14. THE CONTRACTOR SHALL NOTIFY THE CONSTRUCTION & STORM DRAIN DIVISION BY TELEPHONE, MADISON 9-4747, EXT. 362, AT LEAST TWENTY-FOUR HOURS BEFORE STARTING ANY WORK UNDER THIS CONTRACT.
 15. Standard specifications dated October 10, 1961 apply in the construction of this project.

NO CHARGE FOR CONNECTIONS
 R. H. Thorburn 1-12-61

PROFILE ALIGNMENT AND GRADE OF P.C. 5755
SANITARY SEWERS PAGE 1
 TO BE RECONSTRUCTED IN

R/W 5/6 LA CIENEGA BLVD
 PRIVATE CONTRACT NO. 5755

W.S. 22
 1 SHEET, 2 PAGES
 SCALE: VERT. 1"=8'
 HORIZ. 1"=20' JAN. 7, 1961
 PREPARED IN THE OFFICES OF

30291

BY: *Andor J. Jennings*
 REG. C. E. NO. 17558
 FOR LEGEND SEE PLAN NO. S-A-64

NOTE:
 GRADES TO WHICH THIS IMPROVEMENT IS TO BE CONSTRUCTED ARE SHOWN ON PLANS AND PROFILES. GRADE POINTS FOR TOP OF CURB, CENTER LINE OF STREETS, OR CENTER LINE OF ALLEYS ARE SHOWN BY CIRCLES ON PROFILES. AT ALL POINTS BETWEEN DESIGNATED POINTS THE GRADE SHALL BE ESTABLISHED SO AS TO CONFORM TO A STRAIGHT LINE DRAWN BETWEEN SAID DESIGNATED POINTS.
 ELEVATIONS ARE IN FEET ABOVE U.S.C. & G.S. SEA LEVEL DATUM OF 1929.
 THIS DRAWING AND THE DATA HEREON ARE HEREBY MADE A PART OF THE SPECIFICATIONS.
 BEFORE WORK CAN BE STARTED, THE CONTRACTOR MUST OBTAIN A PERMIT TO EXCAVATE IN COUNTY STREETS FROM THE L.A. COUNTY ROAD DEPT., DISTRICT OFFICE NO. 8, AND MAKE A DEPOSIT WITH THE COUNTY ENGINEER, ROOM 310, L.A. CO. Bldg., BUILDING 108 WEST 4th ST., SUFFICIENT TO COVER THE COST OF CONSTRUCTION INSPECTION AND RECORD PLANS.
 APPROVAL OF THIS PLAN BY THE COUNTY OF LOS ANGELES DOES NOT CONSTITUTE A REPRESENTATION AS TO THE ACCURACY OF THE LOCATION OF OR THE EXISTENCE OR NON-EXISTENCE OF ANY UNDERGROUND UTILITY PIPE, OR STRUCTURE WITHIN THE LIMITS OF THIS PROJECT. THIS NOTE APPLIES TO ALL PAGES.
 IF WORK IS TO BE DONE IN A STATE HIGHWAY, A PERMIT MUST BE OBTAINED FROM THE STATE OF CALIFORNIA, DIVISION OF HIGHWAYS, 120 SOUTH SPRING STREET.

COUNTY OF LOS ANGELES, CALIFORNIA
 APPROVED, JOHN A. LAMBIE, COUNTY ENGINEER
 APPROVED, A. H. RAWN, CHIEF ENGINEER
 BY: *J. E. B. [Signature]* S.S.T. SANITATION ENGINEER
 BY: *[Signature]* OFFICE ENGINEER
 CHECKED BY: *[Signature]*
 OFFICE OF COUNTY ENGINEER, R.O. C. & E. NO. 3956

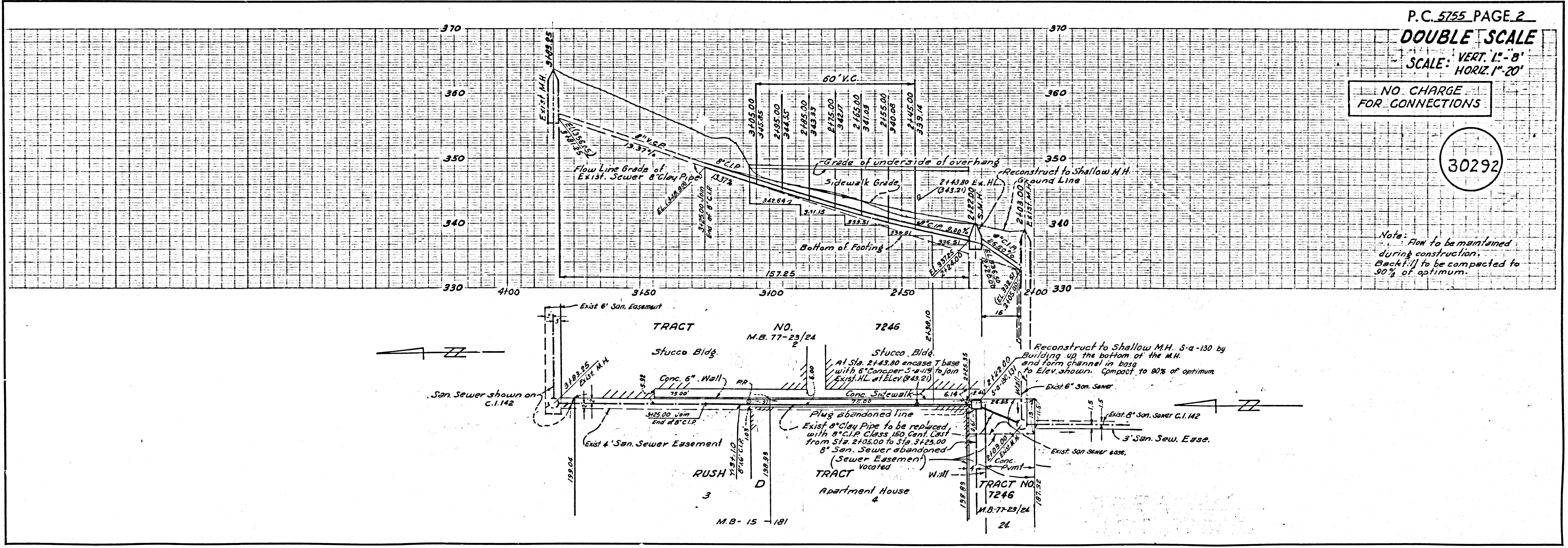
NO CONNECTIONS FOR THE DISPOSAL OF INDUSTRIAL WASTES SHALL BE MADE TO SEWERS SHOWN ON THESE DRAWINGS WITHOUT WRITTEN PERMISSION FROM THE CHIEF ENGINEER AND GENERAL MANAGER OF THE COUNTY SANITATION DISTRICTS.

P.C. 5755 PAGE 2
DOUBLE SCALE
 SCALE: VERT. 1"=8'
 HORIZ. 1"=20'

NO CHARGE FOR CONNECTIONS

30292

Note: Flow to be maintained during construction. Backfill to be compacted to 90% of optimum.



768