

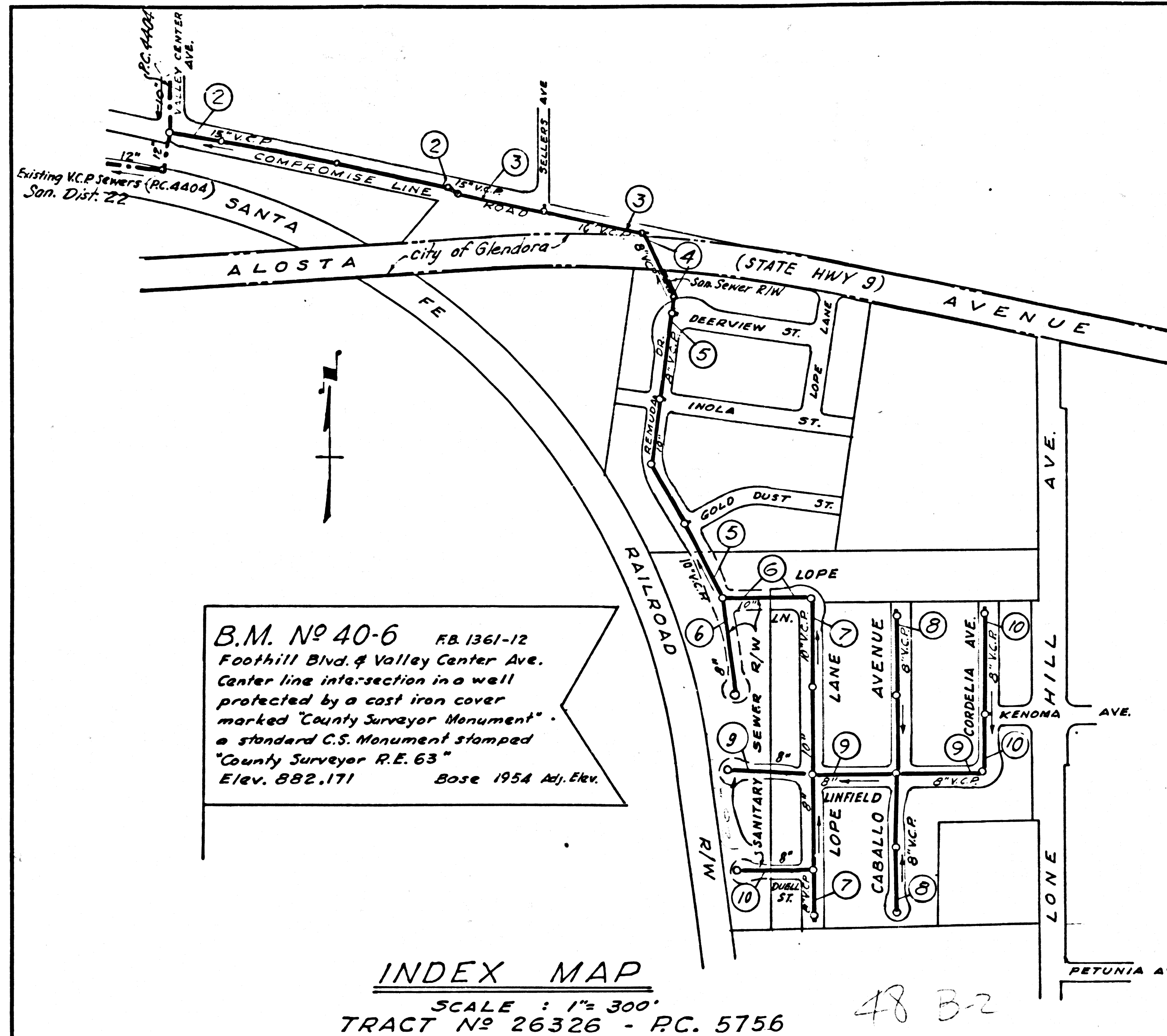
DOUBLE SCALE
SAN DIMAS BLDG. DIST. NO. 10

PROFILE ALIGNMENT AND GRADE OF P.C. 5756
SANITARY SEWERS PAGE 1
TO BE CONSTRUCTED IN J.N. 0355.08

TRACT N° 26326
PRIVATE CONTRACT NO. 5756

W.S. 48
5 SHEETS; 10 PAGES
SCALE: VERT. 1"=8' HORIZ. 1"=40'
NOVEMBER, 1961
PREPARED IN THE OFFICES OF
BROOKS & MILLER
By: *Ralph S. Brooks*
REG. C. E. NO. 2400
FOR LEGEND SEE PLAN NO. S-A-64

32109



B.M. No. 40-6
Foothill Blvd. & Valley Center Ave.
Center line intersection in a wall
protected by a cast iron cover
marked "County Surveyor Monument"
a standard C.S. Monument stamped
"County Surveyor R.E. 63"
Elev. 882.171 Base 1954 Adj. Elev.

INDEX MAP
SCALE: 1"=300'
TRACT N° 26326 - P.C. 5756

- NOTES:
1. PROVIDE STAKES ON THE PROPERTY LINE OR PROPERTY LINES PRODUCED AT RIGHT ANGLES TO THE SEWER LINE AT THE CENTER LINE OF EACH MANHOLE.
 2. NO REPRESENTATIVE OF THE COUNTY ENGINEER WILL SURVEY OR LAY OUT ANY PORTION OF THE WORK.
 3. THE OWNER OR HIS AUTHORIZED REPRESENTATIVE SHALL FURNISH THE COUNTY ENGINEER WITH GRADE SHEETS AND STATIONING FOR ALL HOUSE LATERALS AND Y BRANCHES AND SHALL PROVIDE STAKES FOR THEM AT THEIR PROPER LOCATIONS WITH STATIONING PLAINLY MARKED. ANY CHANGE IN LOCATION SHALL BE REQUESTED IN WRITING BY THE OWNER OR HIS REPRESENTATIVE.
 4. THE PRIVATE ENGINEER SHALL FURNISH THE HOUSE LATERAL DEPTH AT THE PROPERTY LINE BELOW THE TOP OF CURB ELEVATION FOR EACH HOUSE LATERAL ON THE GRADE SHEET.
 5. NO REVISIONS SHALL BE MADE IN THESE PLANS WITHOUT THE APPROVAL OF THE COUNTY ENGINEER.
 6. USE STANDARD MANHOLE FRAMES AND COVERS, 4'-11".
 7. USE EXTRA STRENGTH PIPE, ALL PIPE IS STANDARD DEPTH, EXCEPT AS NOTED.
 8. USE CEMENT MORTAR OR "WEDGE-LOCK" OR "SPREAD-SEAL" FOR ALL V.C.P. JOINTS PER SPECS., SECS. 14 & 48.
 9. RESURFACE ALL TRENCH WITHIN PAVED AREA TO MEET L.A. COUNTY ROAD DEPT. OR CALIF. STATE HIGHWAY REQUIREMENTS IN ACCORDANCE WITH PERMITS.
 10. ENCASE FOUR FEET OF SEWER AT POINTS OF INTERFERENCE WITH POLES, CASE III, 5'-17".
 11. HOUSE LATERALS TO BE CONSTRUCTED WITH INVERTS AT PROPERTY LINE 6 FEET BELOW CURB GRADE.
 12. ALL STRUCTURES SHALL BE BRICK SEWER STRUCTURES, 5-104, PRECAST CONCRETE MANHOLES PER 5-175 & 5-178 MAY BE USED AT ALTERNATE LOCATIONS APPROVED BY THE COUNTY ENGINEER.
 13. FOR ALLOWABLE LEAKAGE TEST USE FORMULA NO. 1, SPECS., SEC. 54.
 14. MANHOLE TOPS IN UNIMPROVED RIGHTS-OF-WAY TO BE SIX INCHES ABOVE FINISHED GRADE.
 15. THE CONTRACTOR SHALL NOTIFY THE CONSTRUCTION DIVISION BY TELEPHONE, MADISON 9-4747, EXT. 81551, AT LEAST TWENTY-FOUR HOURS BEFORE STARTING ANY WORK UNDER THIS CONTRACT.
 16. STANDARD SPECIFICATIONS DATED OCTOBER 25, 1961 SHALL APPLY IN THE CONSTRUCTION OF THIS PROJECT.

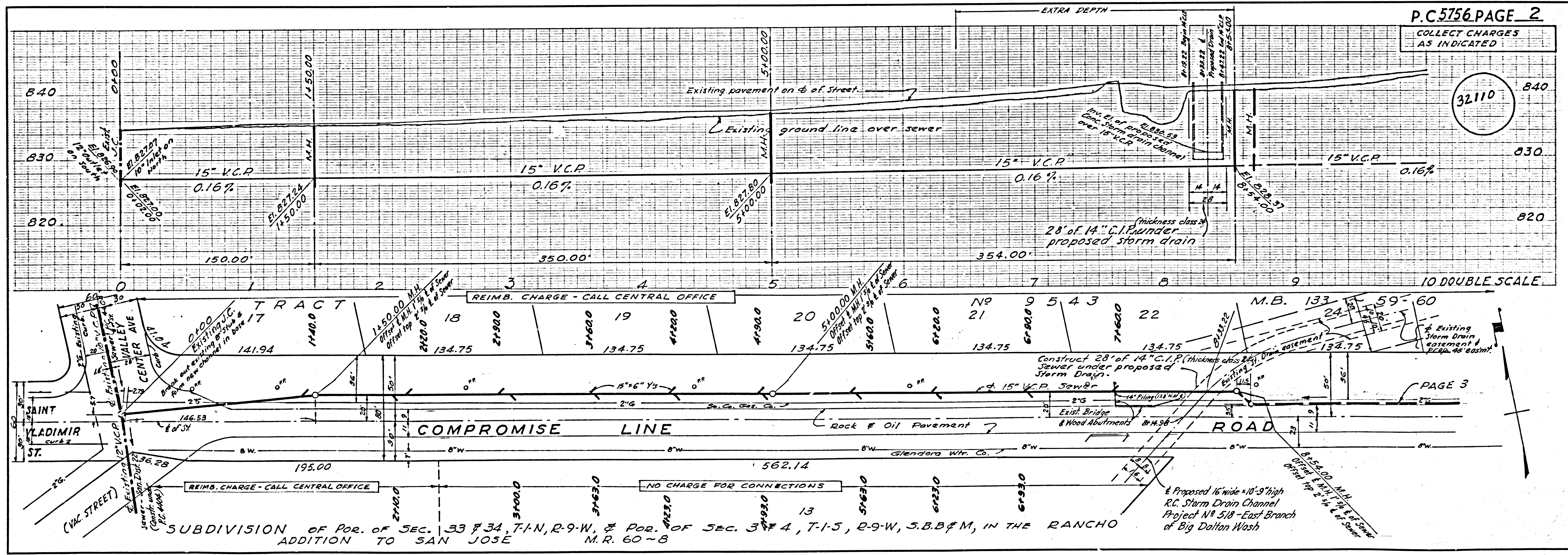
NO CONNECTIONS FOR THE DISPOSAL OF INDUSTRIAL WASTES SHALL BE MADE TO SEWERS SHOWN ON THESE DRAWINGS WITHOUT WRITTEN PERMISSION FROM THE CHIEF ENGINEER AND GENERAL MANAGER OF THE COUNTY SANITATION DISTRICTS.

COLLECT CHARGES AS INDICATED
7.27 3-15-62

CITY OF GLENDORA
(ALOSTA AVE. CROSSING)
APPROVED *Duffy Atkinson* 3-27-62

NOTE:
GRADES TO WHICH THIS IMPROVEMENT IS TO BE CONSTRUCTED ARE SHOWN ON PLANS AND PROFILES. GRADE POINTS FOR TOP OF CURBS, CENTER LINE OF STREETS, OR CENTER LINE OF ALLEYS ARE SHOWN BY CIRCLES ON PROFILES. AT ALL POINTS BETWEEN DESIGNATED POINTS THE GRADE SHALL BE ESTABLISHED SO AS TO CONFORM TO A STRAIGHT LINE DRAWN BETWEEN SAID DESIGNATED POINTS.
ELEVATIONS ARE IN FEET ABOVE U.S.C. & G.S. SEA LEVEL DATUM OF 1929.
THIS DRAWING AND THE DATA HEREON ARE HEREBY MADE A PART OF THE SPECIFICATIONS.
WORK SHALL BE CONSTRUCTED ACCORDING TO SPECIFICATIONS ON FILE IN THE OFFICE OF THE COUNTY ENGINEER AND SHALL BE PROSECUTED ONLY IN THE PRESENCE OF THE COUNTY ENGINEER.
BEFORE WORK CAN BE STARTED, THE CONTRACTOR MUST OBTAIN A PERMIT TO EXCAVATE IN COUNTY STREETS FROM THE L.A. COUNTY ROAD DEPT., DISTRICT OFFICE NO. 1, AND PAY A FEE TO THE COUNTY ENGINEER, ROOM 310 COUNTY ENGR. BLDG., 100 W. 2ND ST., L.A., SUFFICIENT TO COVER THE COST OF CONSTRUCTION INSPECTION AND RECORD PLANS.
APPROVAL OF THIS PLAN BY THE COUNTY OF LOS ANGELES DOES NOT CONSTITUTE A REPRESENTATION AS TO THE ACCURACY OF THE LOCATION OF OR THE EXISTENCE OR NON-EXISTENCE OF ANY UNDERGROUND UTILITY PIPE, OR STRUCTURE WITHIN THE LIMITS OF THIS PROJECT. THIS NOTE APPLIES TO ALL PAGES.
IF WORK IS TO BE DONE IN A STATE HIGHWAY, A PERMIT MUST BE OBTAINED FROM THE STATE OF CALIFORNIA, DIVISION OF HIGHWAYS, 120 SOUTH SPRING STREET.
COUNTY OF LOS ANGELES, CALIFORNIA
APPROVED, JOHN A. LAMBIE, COUNTY ENGINEER APPROVED, J.R. PARKHURST, CHIEF ENGINEER
BY: *Richard S. Brooks* ASST. SANITATION ENGINEER BY: *J. R. Parkhurst* OFFICE ENGINEER
CHECKED BY: *W. Duda* 3-28-62
OFFICE OF COUNTY ENGINEER, REG. C. E. NO. 2406
SUBMITTED *W.C. Reinhardt* 3-27-62
SAN DIMAS REGIONAL ENGINEER

REVISION Pages 1 thru 4
Page 3, from Station 8+54.00
to Station 14+32.91, Manhole
added and main line realigned.
R. M. Singleton 6-7-62



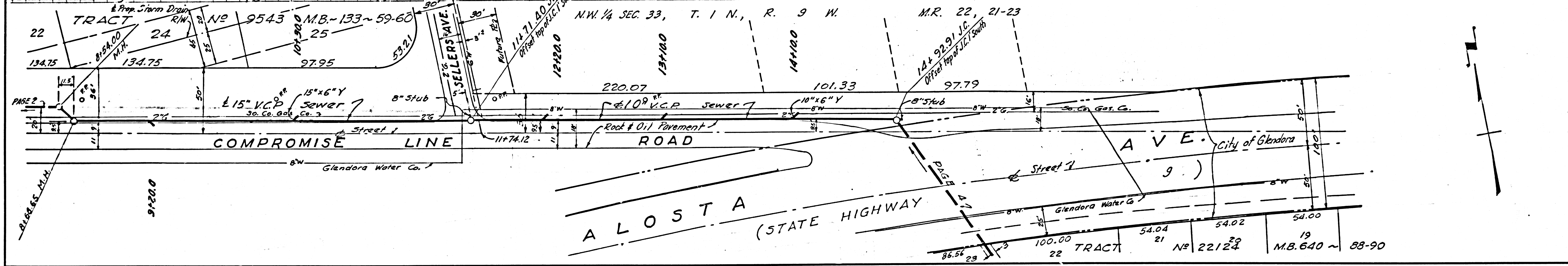
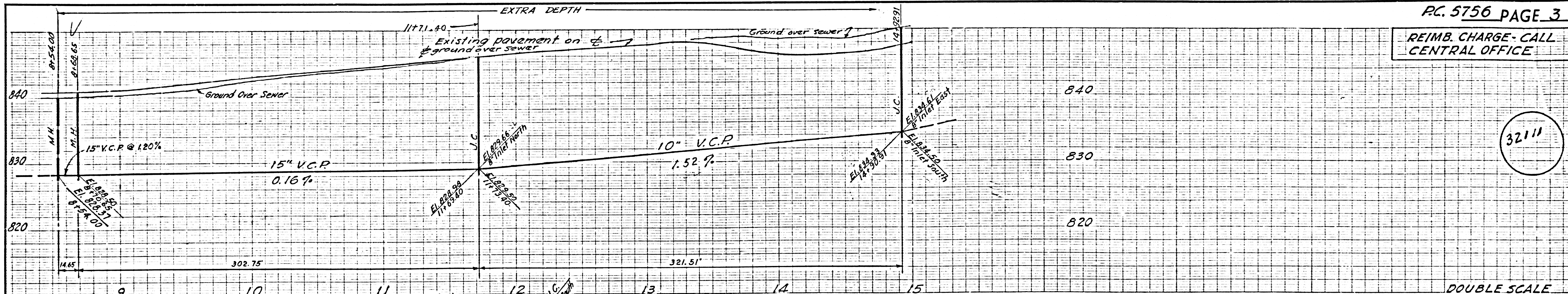
P.C. 5756 PAGE 2
COLLECT CHARGES AS INDICATED

32110

1103 637
1103 3795 cut line 22' 16" ±
1170.67 ± to ±
16" x 12" - 9" high
252.13 ± drain to existing manhole
475730 ± connect to sewer

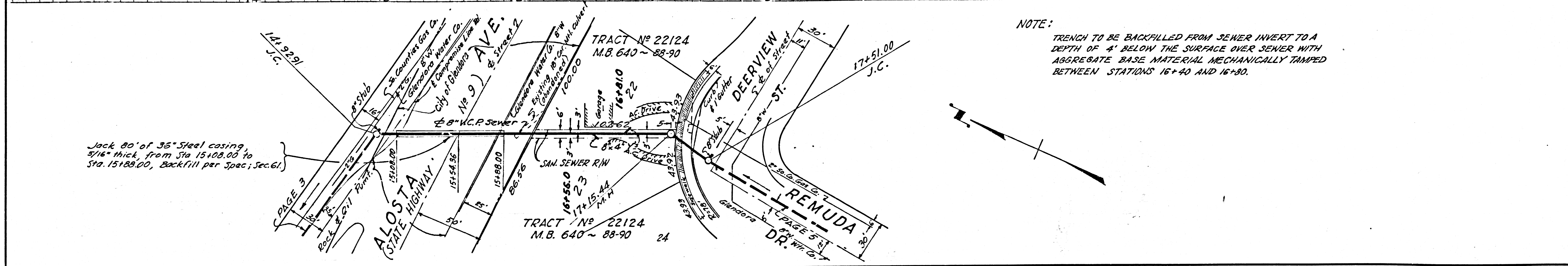
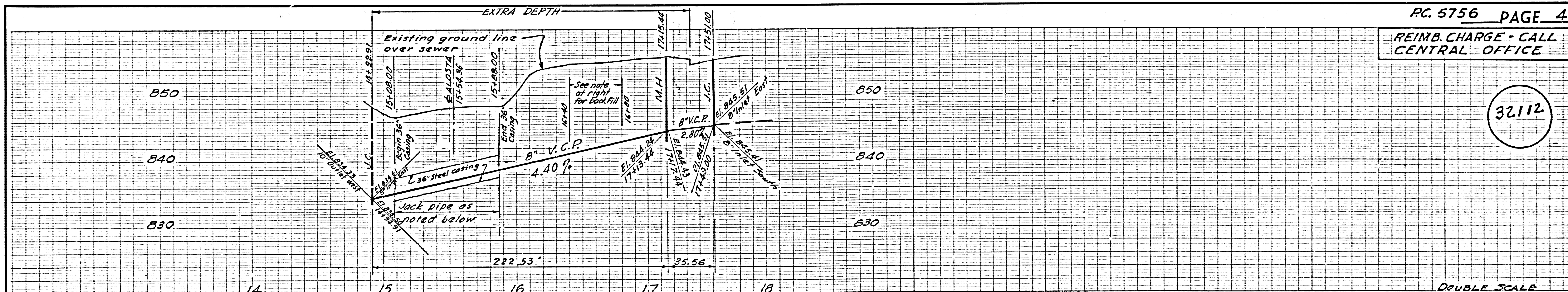
REIMB. CHARGE - CALL CENTRAL OFFICE

32111

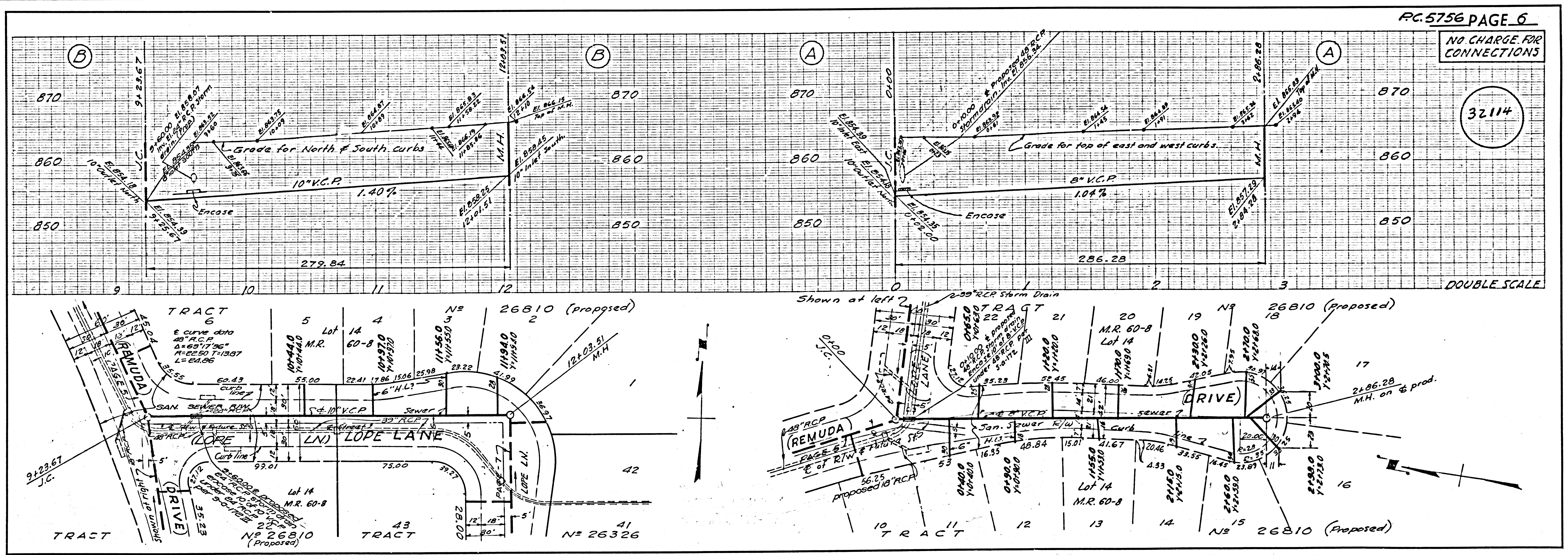
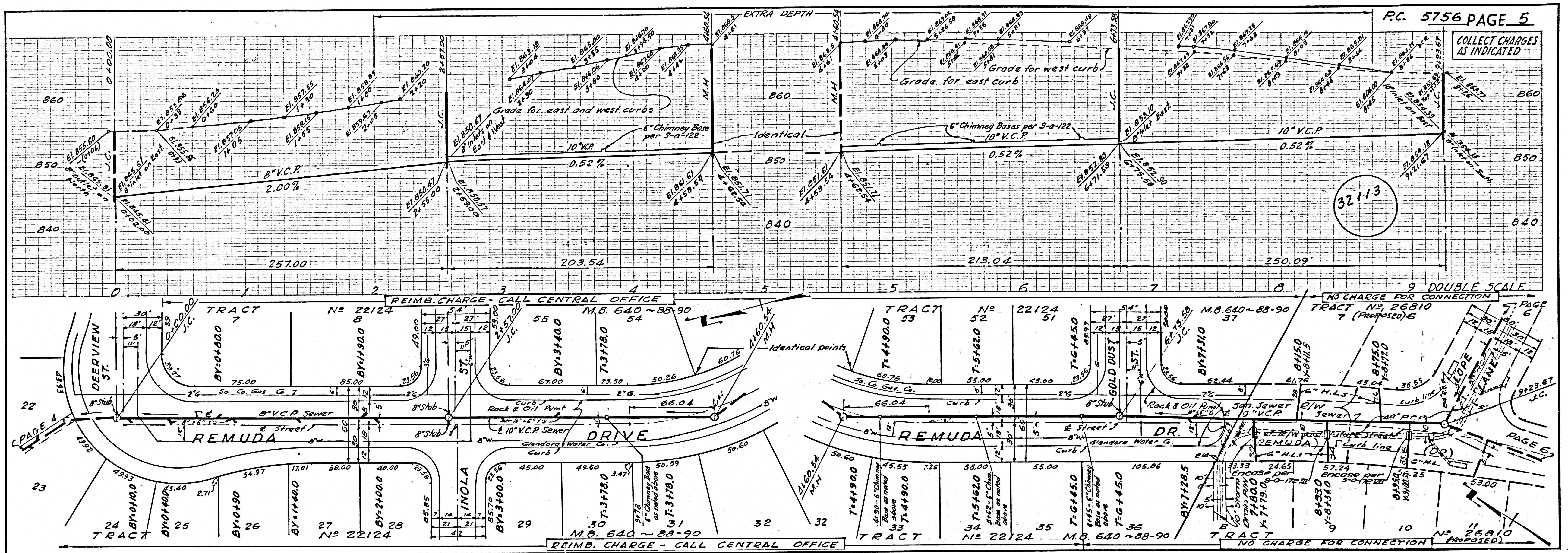


REIMB. CHARGE - CALL CENTRAL OFFICE

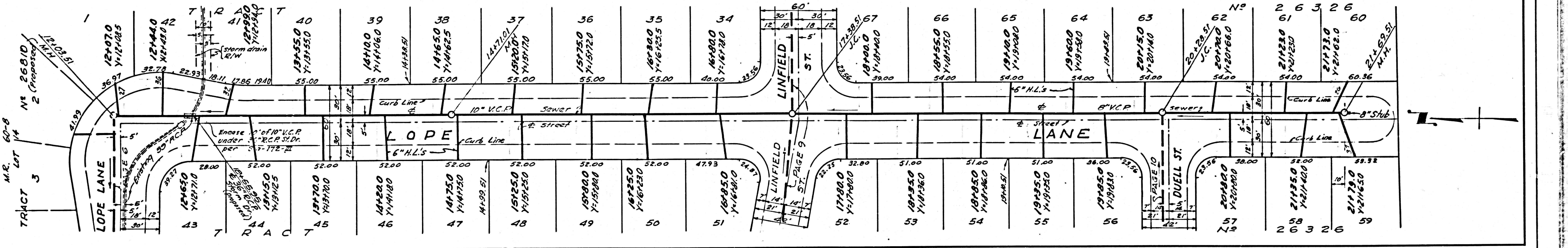
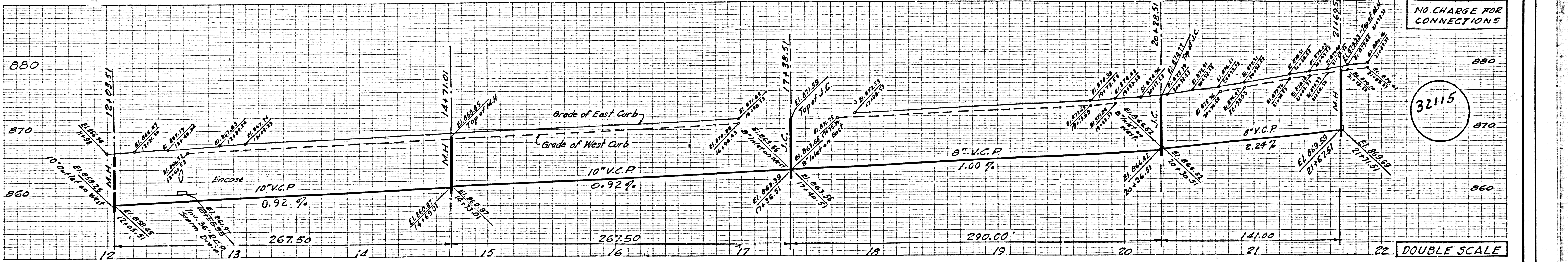
32112



NOTE:
TRENCH TO BE BACKFILLED FROM SEWER INVERT TO A DEPTH OF 4' BELOW THE SURFACE OVER SEWER WITH AGGREGATE BASE MATERIAL MECHANICALLY TAMPED BETWEEN STATIONS 16+40 AND 16+80.



NO CHARGE FOR CONNECTIONS



NO CHARGE FOR CONNECTIONS

