

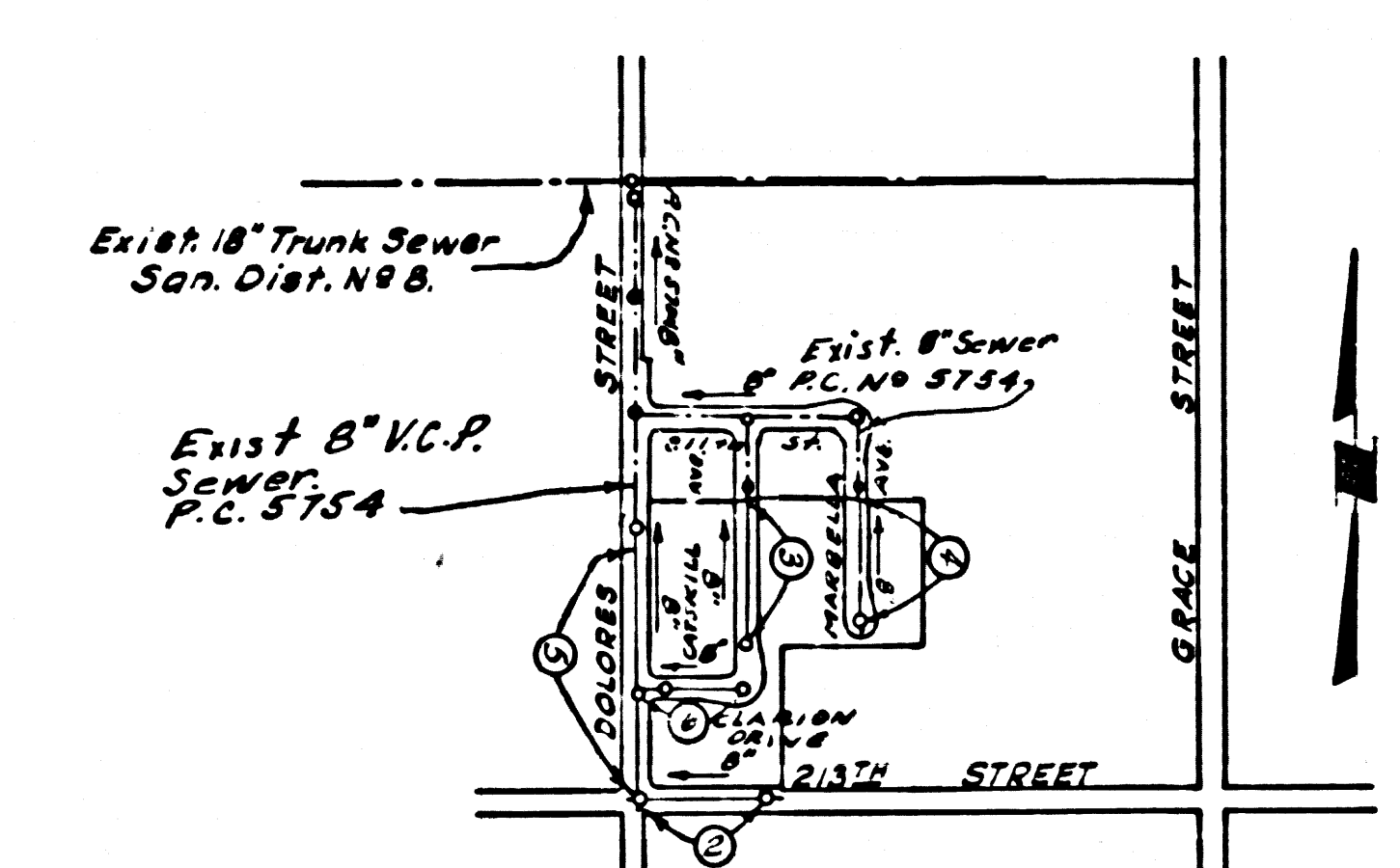
**BENCH MARK: B.M. N° SY 3914**  
 L&T in Conc. Pavement 119' West of E. inter-  
 section of 213th St. & Main St.  
**ELEV. 28.073**

**LOMITA BLDG. DIST. NO. 7.1**

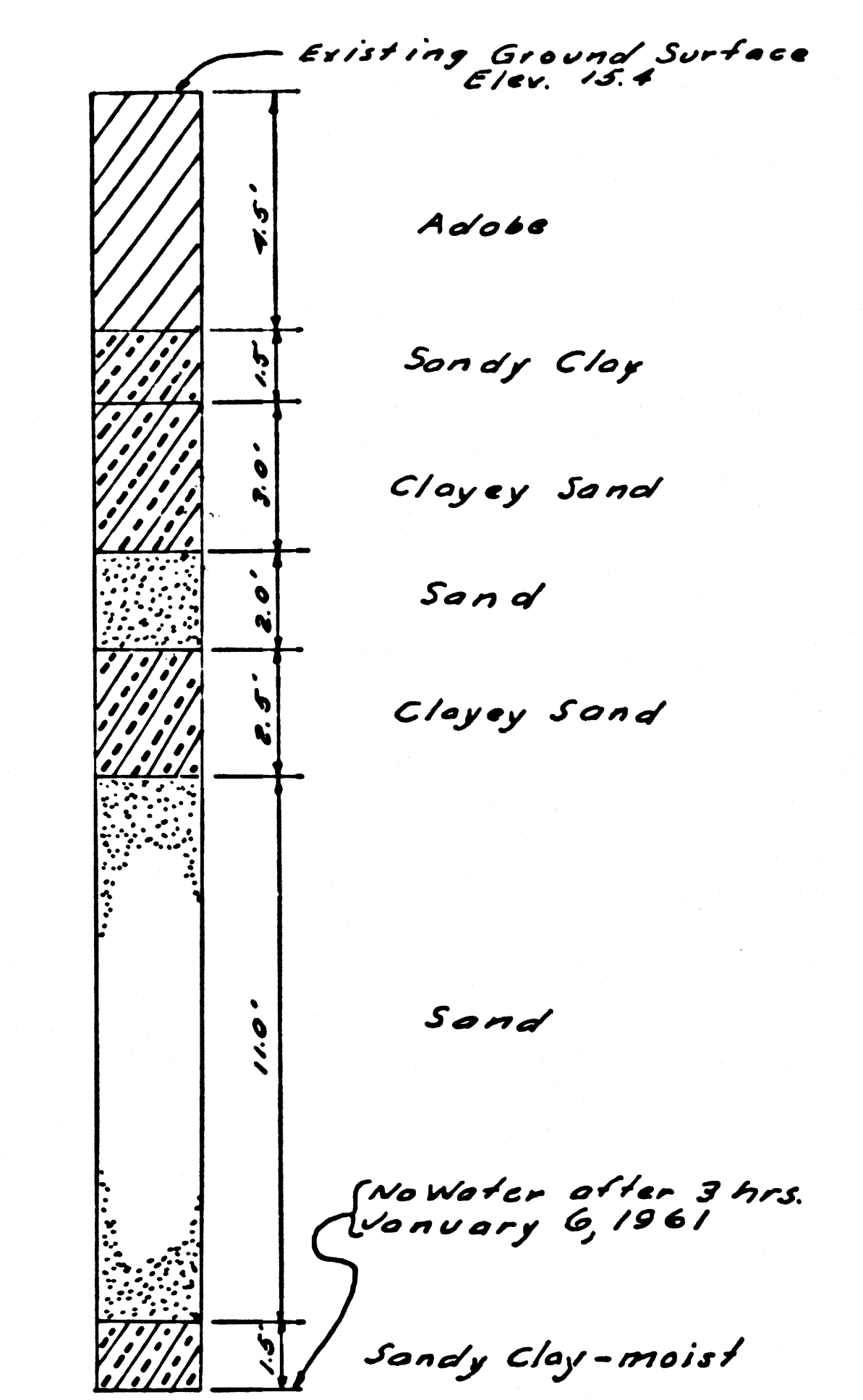
PROFILE ALIGNMENT AND GRADE OF **P.C. 5757**  
**SANITARY SEWERS PAGE 1**  
 TO BE CONSTRUCTED IN J.N. 0355.09  
**TRACT N° 25236**

PRIVATE CONTRACT NO. 5757  
 W.S. 28  
 3 SHEETS; 6 PAGES  
 SCALE: VERT. 1"=4'  
 HORIZ. 1"=40'  
 DECEMBER, 1960  
 PREPARED IN THE OFFICES OF  
**NATIONAL ENGINEERING CO.**  
 BY: *E. J. Johnson*  
 REG. C. E. NO. 5828  
 FOR LEGEND SEE PLAN NO. S-A-64

31000



**INDEX MAP**  
 Direction of Flow  
 Scale 1"=800'  
 TRACT N° 25236  
 P.C. N° 5757



**24" TEST BORING**  
 LOCATION OF TEST BORING  
 175' North of North Tract Boundary  
 on E. of Catekill Avenue

- NOTES:**
1. PROVIDE STAKES ON THE PROPERTY LINE OR PROPERTY LINES PRODUCED AT RIGHT ANGLES TO THE SEWER LINE AT THE CENTER LINE OF EACH MANHOLE.
  2. NO REPRESENTATIVE OF THE COUNTY ENGINEER WILL SURVEY OR LAY OUT ANY PORTION OF THE WORK.
  3. THE OWNER OR HIS AUTHORIZED REPRESENTATIVE SHALL FURNISH THE COUNTY ENGINEER WITH GRADE SHEETS AND STATIONING FOR ALL HOUSE LATERALS AND Y BRANCHES AND SHALL PROVIDE STAKES FOR THEM AT THEIR PROPER LOCATIONS WITH STATIONING PLAINLY MARKED. ANY CHANGE IN LOCATION SHALL BE REQUESTED IN WRITING BY THE OWNER OR HIS REPRESENTATIVE.
  4. THE PRIVATE ENGINEER SHALL FURNISH THE HOUSE LATERAL DEPTH AT THE PROPERTY LINE BELOW THE TOP OF CURB ELEVATION FOR EACH HOUSE LATERAL ON THE GRADE SHEET.
  5. NO REVISIONS SHALL BE MADE IN THESE PLANS WITHOUT THE APPROVAL OF THE COUNTY ENGINEER.
  6. USE STANDARD MANHOLE FRAMES AND COVERS, S-117.
  7. USE STANDARD STRENGTH PIPE EXCEPT AS NOTED.
  8. USE CEMENT MORTAR OR "WEDGE-LOCK" OR "SPEED-SEAL" FOR ALL V.C.P. JOINTS PER SPEC'S, SECS. 36 & 40.
  9. RESURFACE ALL TRENCH WITHIN 4' WEDGE AREA TO MEET L.A. COUNTY ROAD DEPT. OR CALIF. STATE HIGHWAY REQUIREMENTS IN ACCORDANCE WITH PERMITS.
  10. ENCASE FOUR FEET OF SEWER AT POINTS OF INTERFERENCE WITH POLES, CASE III, S-172.
  11. HOUSE LATERALS TO BE CONSTRUCTED WITH INVERTS AT PROPERTY LINE 6 FEET BELOW CURB GRADE EXCEPT AS NOTED.
  12. ALL STRUCTURES SHALL BE BRICK SEWER STRUCTURES, S-104.
  13. FOR ALLOWABLE LEAKAGE TEST USE FORMULA NO. 1, S-105, SEC. 54.
  14. MANHOLE TOPS IN UNIMPROVED RIGHTS-OF-WAY TO BE SIX INCHES ABOVE FINISHED GRADE.
  15. THE CONTRACTOR SHALL NOTIFY THE CONSTRUCTION & STORM DRAIN DIVISION BY TELEPHONE, MADISON 9-4747, EXT. 81551 AT LEAST TWENTY-FOUR HOURS BEFORE STARTING ANY WORK UNDER THIS CONTRACT.
  16. STANDARD SPEC'S DATED OCTOBER 10 1960 SHALL BE USED IN THE CONSTRUCTION OF THIS PROJECT.
  17. GROUND WATER: WHERE GROUND WATER IS ENCOUNTERED USE METAL SHEETS AND POINTS, OR "WEDGE LOCK" OR "SPEED SEAL" PER SECTIONS 35, 36 & 40 OF STANDARD SPECIFICATIONS.

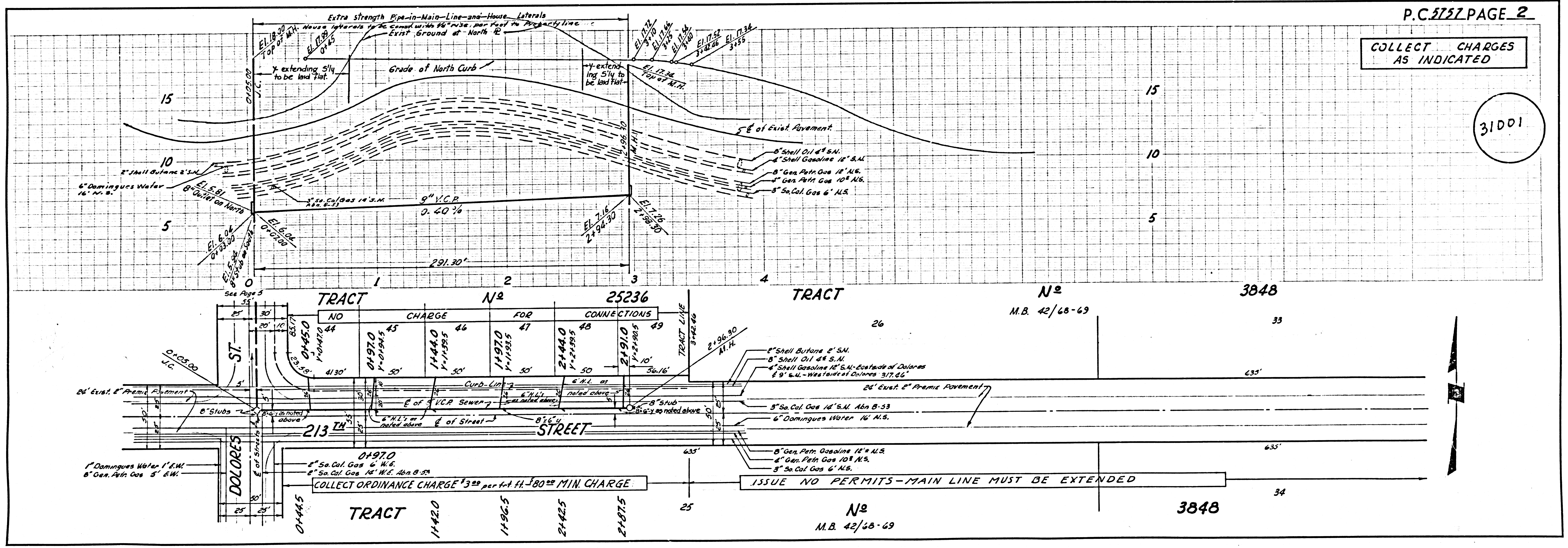
COLLECT CHARGES AS INDICATED  
*L. Austin 1-16-61*

ISSUE NO PERMITS UNTIL P.C. 5754 IS CONSTRUCTED.

NO CONNECTIONS FOR THE DISPOSAL OF INDUSTRIAL WASTES SHALL BE MADE TO SEWERS SHOWN ON THESE DRAWINGS WITHOUT WRITTEN PERMISSION FROM THE CHIEF ENGINEER AND GENERAL MANAGER OF THE COUNTY SANITATION DISTRICTS.

**NOTE:**  
 GRADES TO WHICH THIS IMPROVEMENT IS TO BE CONSTRUCTED ARE SHOWN ON PLANS AND PROFILES. GRADE POINTS FOR TOP OF CURBS, CENTER LINE OF STREETS, OR CENTER LINE OF ALLEYS ARE SHOWN BY CIRCLES ON PROFILES. AT ALL POINTS BETWEEN DESIGNATED POINTS THE GRADE SHALL BE ESTABLISHED SO AS TO CONFORM TO A STRAIGHT LINE DRAWN BETWEEN SAID DESIGNATED POINTS.  
 ELEVATIONS ARE IN FEET ABOVE U.S.C. & G.S. SEA LEVEL DATUM OF 1929.  
 THIS DRAWING AND THE DATA HEREON ARE HEREBY MADE A PART OF THE SPECIFICATIONS.  
 BEFORE WORK CAN BE STARTED THE CONTRACTOR MUST OBTAIN A PERMIT TO EXCAVATE IN COUNTY STREETS FROM THE L.A. COUNTY ROAD DEPT., DISTRICT OFFICE NO. 3 AND PAY A FEE TO THE COUNTY ENGINEER, ROOM 310, COUNTY ENGINEERING BLDG., 108 W. 2ND ST., SUFFICIENT TO COVER THE COST OF CONSTRUCTION INSPECTION AND RECORD PLANS.  
 APPROVAL OF THIS PLAN BY THE COUNTY OF LOS ANGELES DOES NOT CONSTITUTE A REPRESENTATION AS TO THE ACCURACY OF THE LOCATION OF OR THE EXISTENCE OR NON-EXISTENCE OF ANY UNDERGROUND UTILITY PIPE, OR STRUCTURE WITHIN THE LIMITS OF THIS PROJECT. THIS NOTE APPLIES TO ALL PAGES.  
 IF WORK IS TO BE DONE IN A STATE HIGHWAY, A PERMIT MUST BE OBTAINED FROM THE STATE OF CALIFORNIA, DIVISION OF HIGHWAYS, 120 SOUTH SPRING STREET.

COUNTY OF LOS ANGELES, CALIFORNIA  
 APPROVED, JOHN A. LAMBIE, COUNTY ENGINEER APPROVED, C. K. COMPTON, CHIEF ENGINEER  
 CO. SAN. DIST. NO. 8  
 BY: *C. E. Priddy* BY: *W. J. Williams*  
 ASST. SANITATION ENGINEER OFFICE ENGINEER  
 CHECKED BY: *J. K. Under* 2-9-61  
 OFFICE OF COUNTY ENGINEER, REG. C. E. NO. 7406  
 SUBMITTED: *Jack C. Lansing*  
 PALOS VERDES-CENTINELA VALLEY REGIONAL ENGINEER



COLLECT CHARGES AS INDICATED

31001

TRACT N°	NO	CHARGE	FOR	CONNECTIONS
25236	01450	44	44	48
	01970	45	45	49
	14440	46	46	50
	14970	47	47	51
25	14420			
	14965			
25	21425			
	21875			

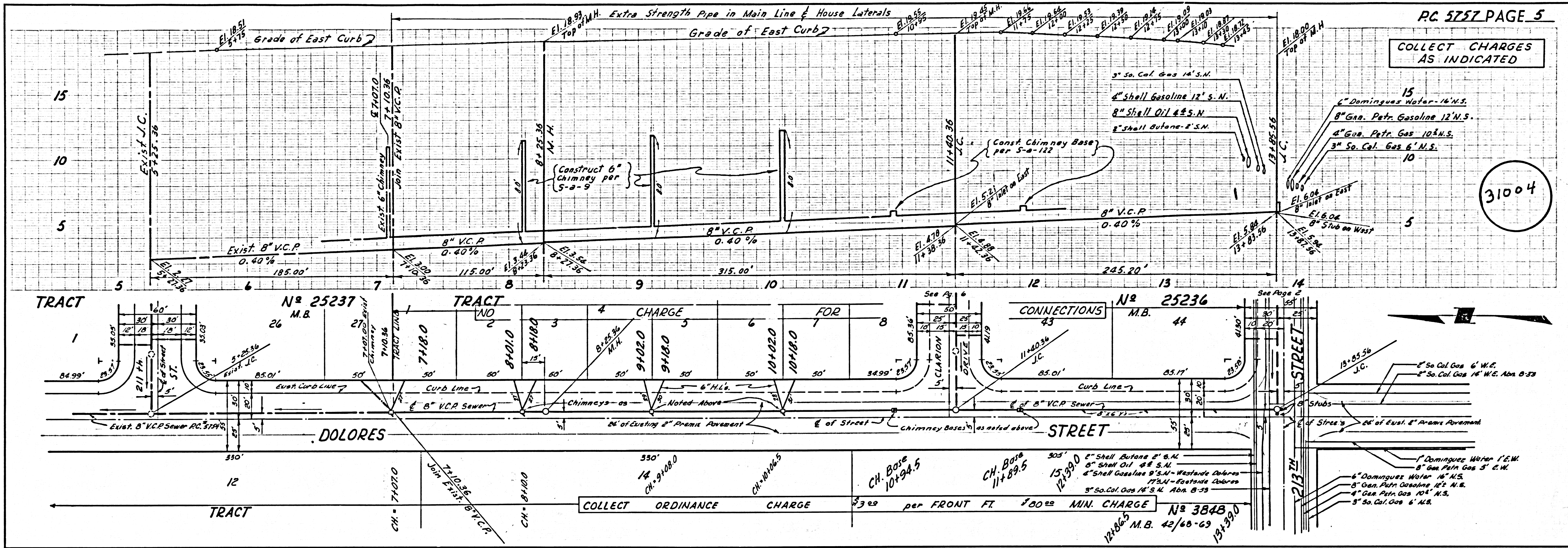
COLLECT ORDINANCE CHARGE \$300 per ft. H. \$800 MIN CHARGE

ISSUE NO PERMITS - MAIN LINE MUST BE EXTENDED



COLLECT CHARGES AS INDICATED

31004



NO CHARGE FOR CONNECTIONS

31005

