

DOUBLE SCALE  
NORWALK BLDG. DIST. NO. 4.2

PROFILE ALIGNMENT AND GRADE OF P.C. 5766  
SANITARY SEWERS PAGE 1  
JULY 1955.15

TO BE CONSTRUCTED IN  
TRACT NO 25796

PRIVATE CONTRACT NO. 5766  
W.S. 34

8 SHEETS, 15 PAGES

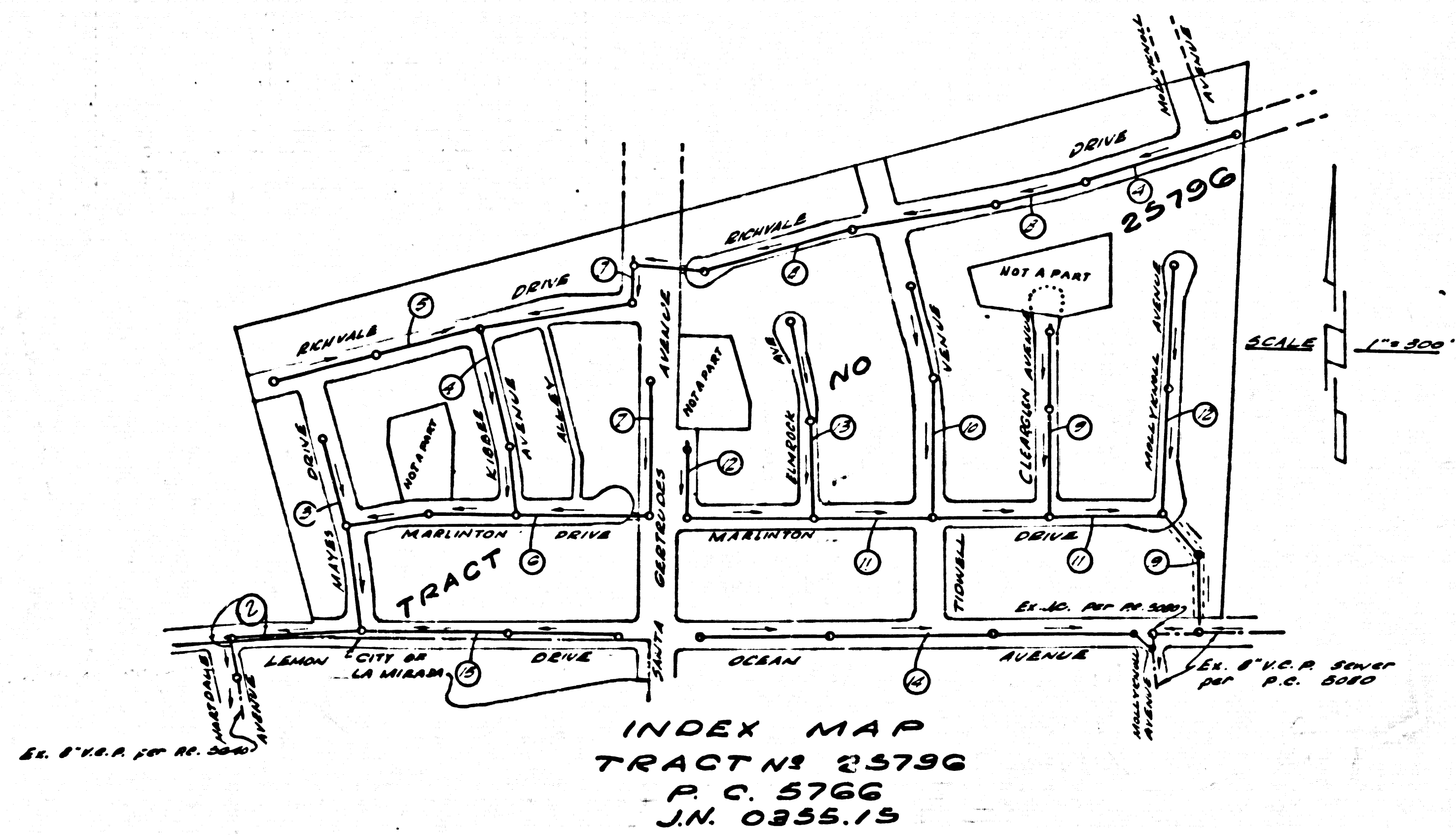
SCALE: VERT. 1" = 4'  
HORIZ. 1" = 40'  
JANUARY, 1951

PREPARED IN THE OFFICES OF  
BARCLAY-PEARSON CO., INC.

By: Edward L. Pearson  
REG. C. E. NO. 2723  
FOR LEGEND SEE PLAN NO. S-A-64

CONNECTION CHARGES  
AS INDICATED  
L. H. 2-7-61

REVISIONS  
Page 5A; Add pipe on Lot 4  
Page 13; Sewer grade raised on Elmrock Ave.  
Page 14; H.L.'s on South side of Ocean Ave.  
Extended 10'  
John L. Ector 3-26-61



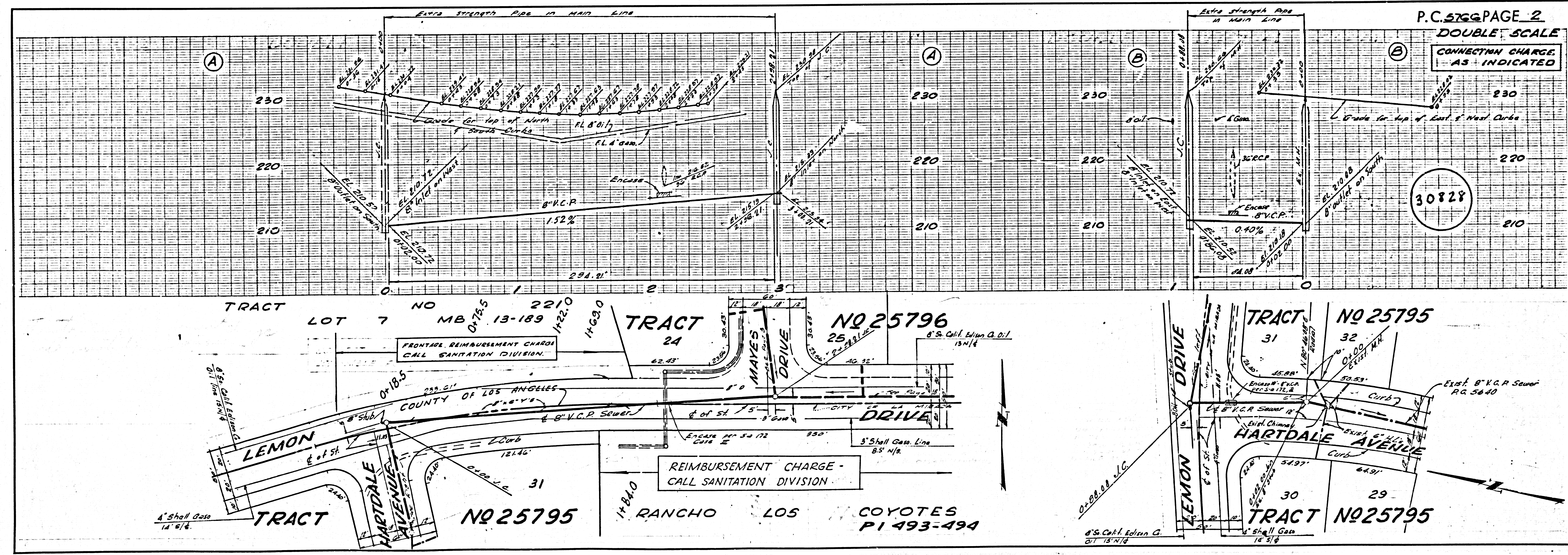
- NOTES
- PROVIDE STAKES ON THE PROPERTY LINE OR PROPERTY LINES PRODUCED AT RIGHT ANGLES TO THE SEWER LINE AT THE CENTER LINE OF EACH MANHOLE.
  - NO REPRESENTATIVE OF THE COUNTY ENGINEER WILL SURVEY OR LAYOUT ANY PORTION OF THE WORK.
  - THE OWNER OR HIS AUTHORIZED REPRESENTATIVE SHALL FURNISH THE COUNTY ENGINEER WITH GRADE SHEETS AND STATION FOR ALL HOUSE LATERALS AND T BRANCHES AND SHALL PROVIDE STAKES FOR THEM AT THEIR PROPER LOCATIONS WITH STATIONING PLAINLY MARKED. ANY CHANGE IN LOCATION SHALL BE REQUESTED IN WRITING BY THE OWNER OR HIS REPRESENTATIVE.
  - NO REVISIONS SHALL BE MADE IN THESE PLANS WITHOUT THE APPROVAL OF THE COUNTY ENGINEER.
  - USE STANDARD MANHOLE FRAMES AND COVERS, S-A-117.
  - USE STANDARD STRENGTH PIPE EXCEPT AS NOTED.
  - USE CEMENT MORTAR OR "MASON-LINE" OR "SPREAD-SEAL" FOR ALL VERTICAL ELAY PIPE JOINTS.
  - RESURFACE ALL TRENCH WITHIN PAVED AREA TO MEET L. A. COUNTY ROAD DEPT., OR CALIF. STATE HIGHWAY DEPT. REQUIREMENTS IN ACCORDANCE WITH PERMITS.
  - ENCASE FOUR FEET OF SEWER AT POINTS OF INTERFERENCE WITH POLES, SA-172, C&G 33.
  - HOUSE LATERALS TO BE CONSTRUCTED WITH INVERTS AT PROPERTY LINE 6" BELOW CURB GRADE EXCEPT AS NOTED.
  - ALL STRUCTURES SHALL BE BRICK SEWER STRUCTURES, S-A-104.
  - FOR ALLOWABLE LEAKAGE TEST USE FORMULA NO. 1 SPEC. SEC. 3.
  - MANHOLE TOPS IN UNIMPROVED RIGHTS-OF-WAY TO BE 6" ABOVE FINISHED GRADE.
  - STANDARD SPECIFICATIONS DATED OCTOBER 10, 1950.
  - APPLY IN THE CONSTRUCTION OF THIS PROJECT.
  - THE CONTRACTOR SHALL NOTIFY THE CONSTRUCTION DIVISION BY TELEPHONE AND BY ENT. DIST. AT LEAST 24 HRS. BEFORE STARTING WORK UNDER THIS CONTRACT.
  - NO CONSTRUCTION SHALL BE PERMITTED IN FILLED AREAS UNLESS ACCEPTABLE CERTIFICATION IS SUBMITTED TO THE CONSTRUCTION DIVISION OF THE COUNTY ENGINEER'S DEPT. THAT RELATIVE COMPACTION IS GREATER THAN 90%.
  - IF COMPACTION IS GREATER THAN 90% CRADLING AND SPECIAL M.M. BASES ARE NOT REQUIRED, HOWEVER, JOINT COMPOUND MUST BE DISTRIBUTED FOR JOINTS AND ALL JOINTS IN FILLED AREAS.
  - IF COMPACTION IS LESS THAN 90% THE SEWER MUST BE CRADLED AS SHOWN ON PLANS S-A-180.
  - THE PRIVATE ENGINEER SHALL FURNISH THE HOUSE LATERAL DEPTH AT PROPERTY LINE BEING THE TOP OF CURB ELEVATION FOR EACH HOUSE LATERAL ON THE GRADE SHEET.
- IT SHALL BE THE CONTRACTOR'S RESPONSIBILITY TO LOCATE ALL UNDERGROUND LINES OF EVERY NATURE WHETHER SHOWN HEREON OR NOT AND PROTECT THEM FROM DAMAGE. THE CONTRACTOR SHALL BEAR THE TOTAL BURDEN OF LOSS TO ANY LINES DAMAGED BY ANY OPERATION IN CONNECTION WITH THE EXECUTION OF THIS WORK.

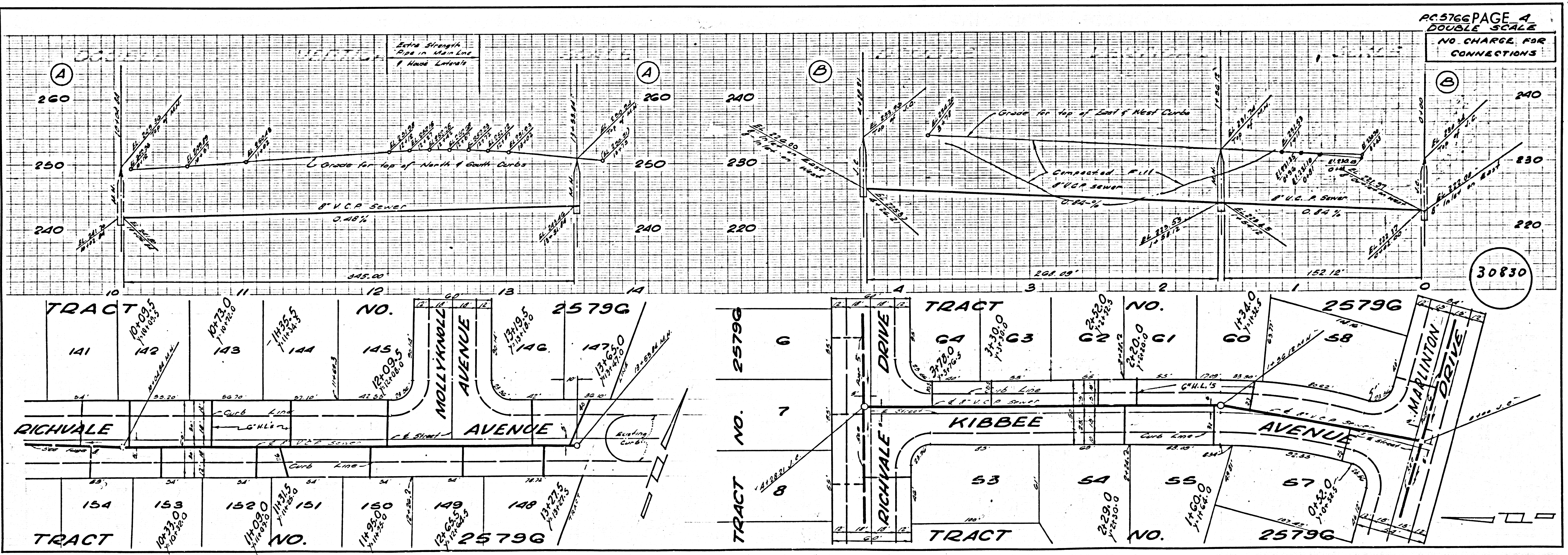
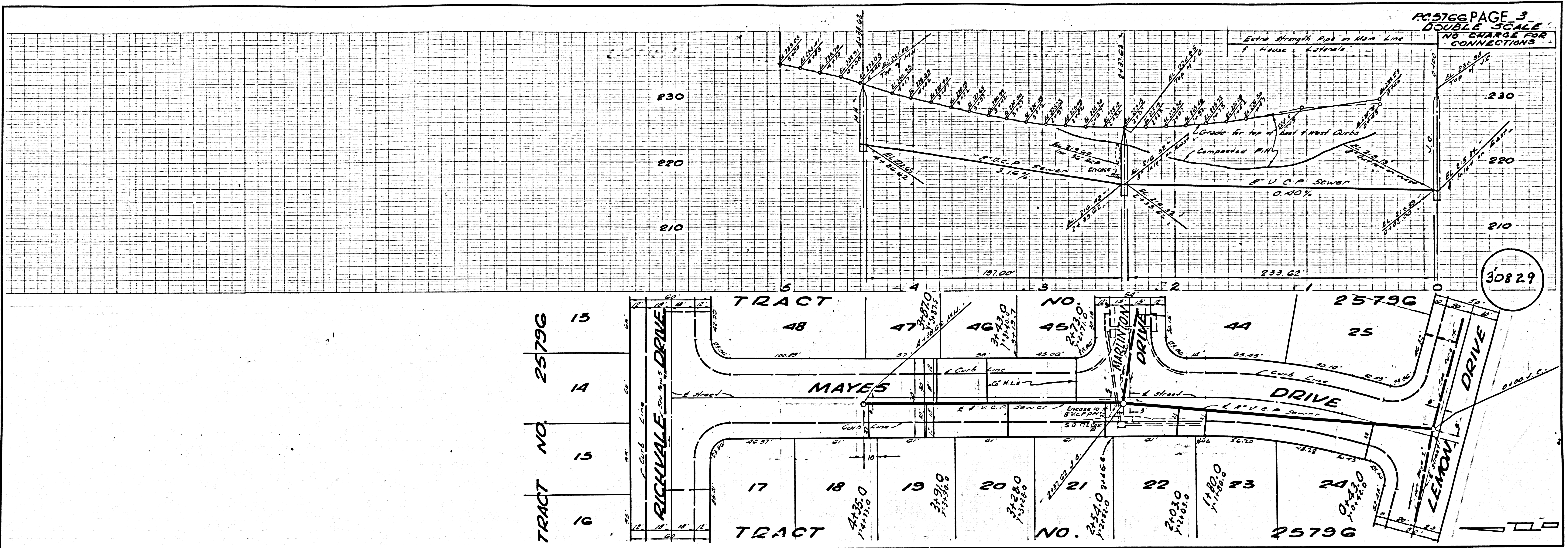
GENUINE MARK  
SET 1" 4" B.M. & EDGE OF CURB ONLY TO  
MATCH 18743 LEMON DRIVE S&W 1/2 L&W  
DE 2 30' W & S&W EXTENSION AVENUE

NO CONNECTIONS FOR THE DISPOSAL OF INDUSTRIAL WASTES SHALL BE MADE TO SEWERS SHOWN ON THESE DRAWINGS WITHOUT WRITTEN PERMISSION FROM THE CHIEF ENGINEER AND GENERAL MANAGER OF THE COUNTY SANITATION DISTRICTS.

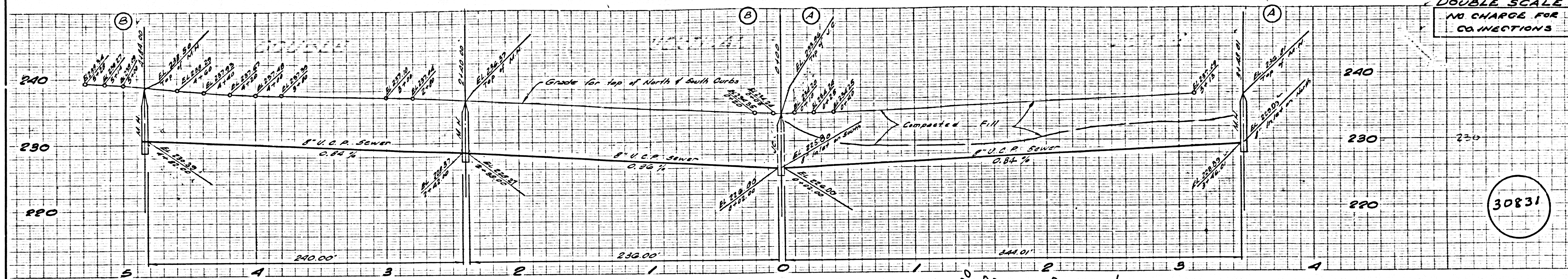
NOTE:  
GRADES TO WHICH THIS IMPROVEMENT IS TO BE CONSTRUCTED ARE SHOWN ON PLANS AND PROFILES. GRADE POINTS FOR TOP OF CURBS, CENTER LINE OF STREETS, OR CENTER LINE OF ALLEYS ARE SHOWN BY CIRCLES ON PROFILES. AT ALL POINTS BETWEEN DESIGNATED POINTS THE GRADE SHALL BE ESTABLISHED SO AS TO CONFORM TO A STRAIGHT LINE DRAWN BETWEEN SAID DESIGNATED POINTS.  
ELEVATIONS ARE IN FEET ABOVE U.S.C. & G.S. SEA LEVEL DATUM OF 1929.  
THIS DRAWING AND THE DATA HEREON ARE HEREBY MADE A PART OF THE SPECIFICATIONS.  
WORK SHALL BE CONSTRUCTED ACCORDING TO SPECIFICATIONS ON FILE IN THE OFFICE OF THE COUNTY ENGINEER AND SHALL BE PROSECUTED ONLY IN THE PRESENCE OF THE COUNTY ENGINEER.  
BEFORE WORK CAN BE STARTED, THE CONTRACTOR MUST OBTAIN A PERMIT TO EXCAVATE IN COUNTY STREETS FROM THE L. A. COUNTY ROAD DEPT. CITY ENGINEER AND CITY PLER WITH THE COUNTY ENGINEER, ROOM #10, 25 1/2 W. BLDG. #10, 25 1/2 W. SUFFICIENT TO COVER THE COST OF CONSTRUCTION INSPECTION AND RECORD PLANS.  
APPROVAL OF THIS PLAN BY THE COUNTY OF LOS ANGELES DOES NOT CONSTITUTE A REPRESENTATION AS TO THE ACCURACY OF THE LOCATION OF OR THE EXISTENCE OR NON-EXISTENCE OF ANY UNDERGROUND UTILITY PIPE, OR STRUCTURE WITHIN THE LIMITS OF THIS PROJECT. THIS NOTE APPLIES TO ALL PAGES.  
IF WORK IS TO BE DONE IN A STATE HIGHWAY, A PERMIT MUST BE OBTAINED FROM THE STATE OF CALIFORNIA, DIVISION OF HIGHWAYS, 120 SOUTH SPRING STREET.

COUNTY OF LOS ANGELES, CALIFORNIA  
APPROVED JOHN A. LAMBE, COUNTY ENGINEER  
APPROVED C. R. COMPTON, CHIEF ENGINEER  
CO. SAN. DIST. NO. 4  
BY: E. E. Pearson, ASST. SANITATION ENGINEER  
BY: [Signature], OFFICE ENGINEER  
CHECKED BY: S. K. Onda 3-18-61  
OFFICE OF COUNTY ENGINEER, BLDG. C. E. NO. 5456  
SUBMITTED BY: John L. Ector 3-13-61  
LEO BARRETT, CIVIL ENGINEER, 202 3074

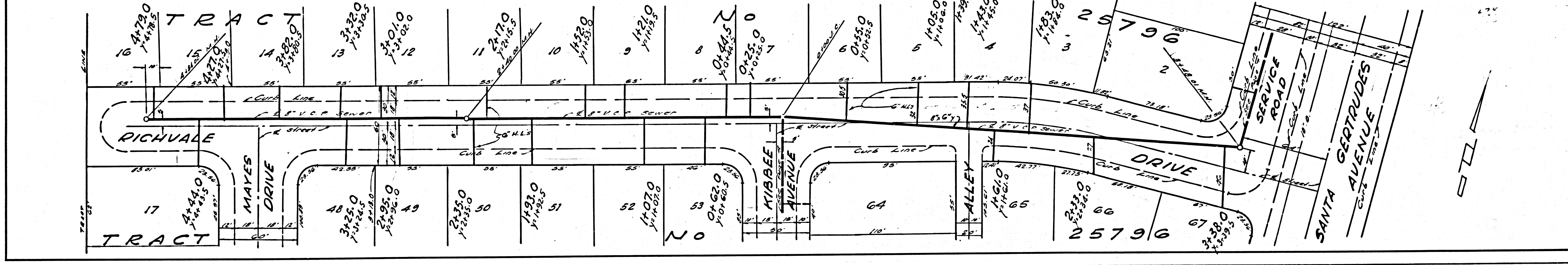




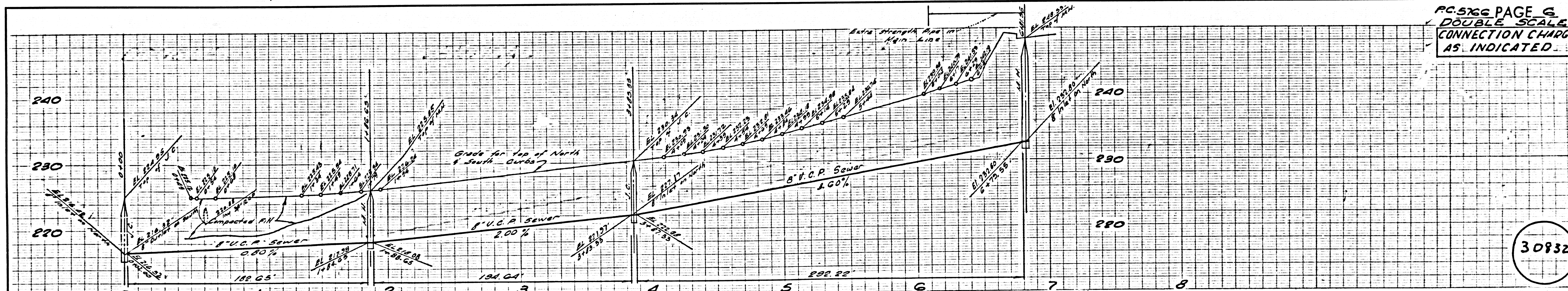
PC-5766 PAGE 5  
DOUBLE SCALE  
NO CHARGE FOR  
CONNECTIONS



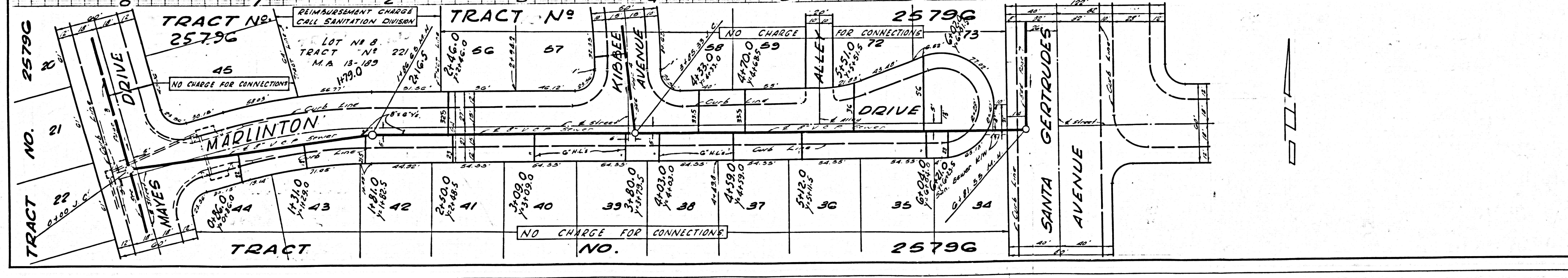
30831

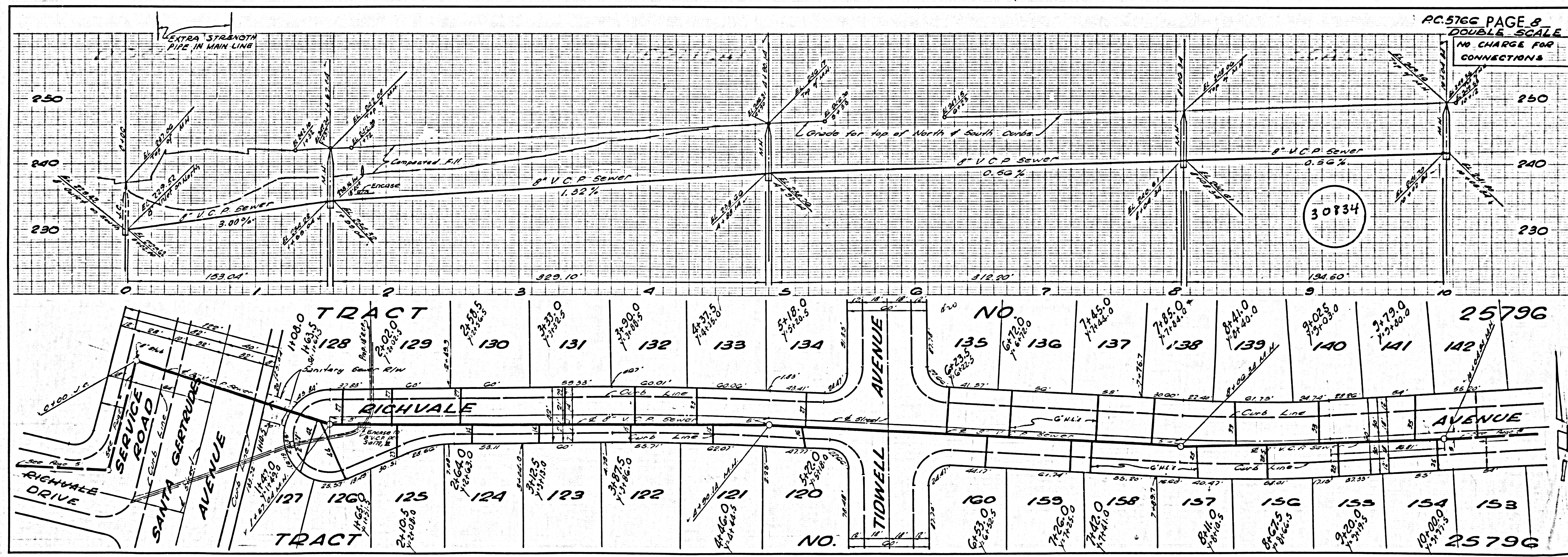
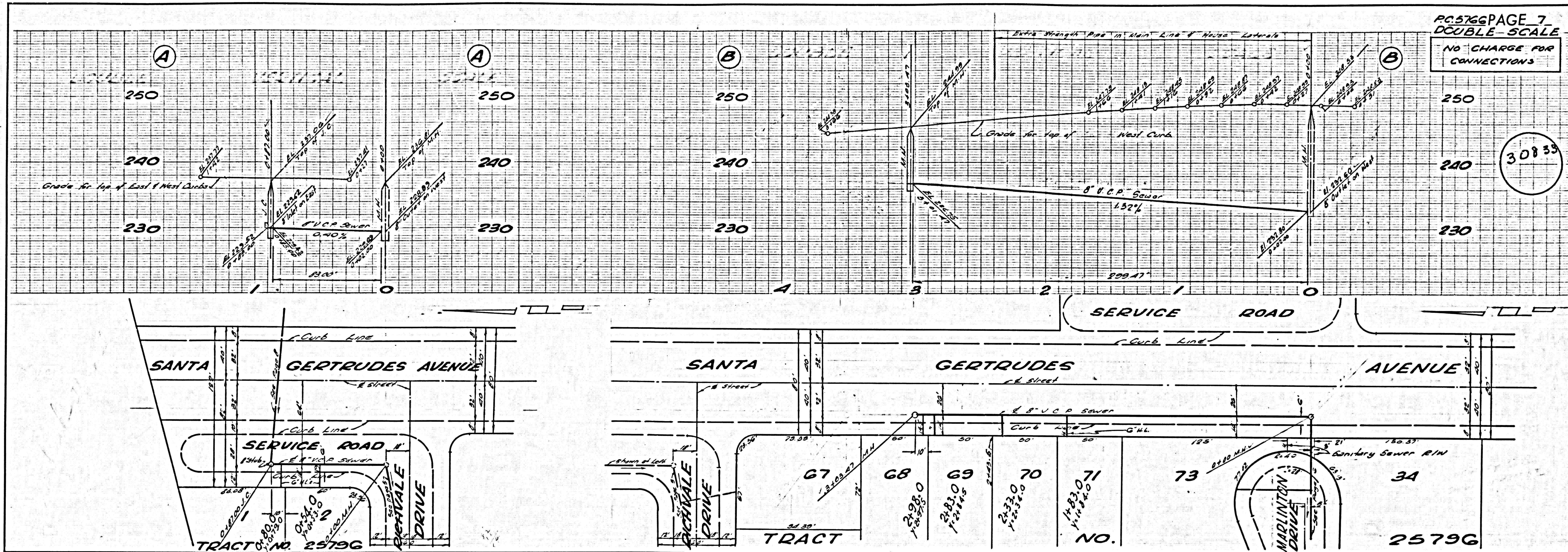


PC-5766 PAGE 6  
DOUBLE SCALE  
CONNECTION CHARGES  
AS INDICATED



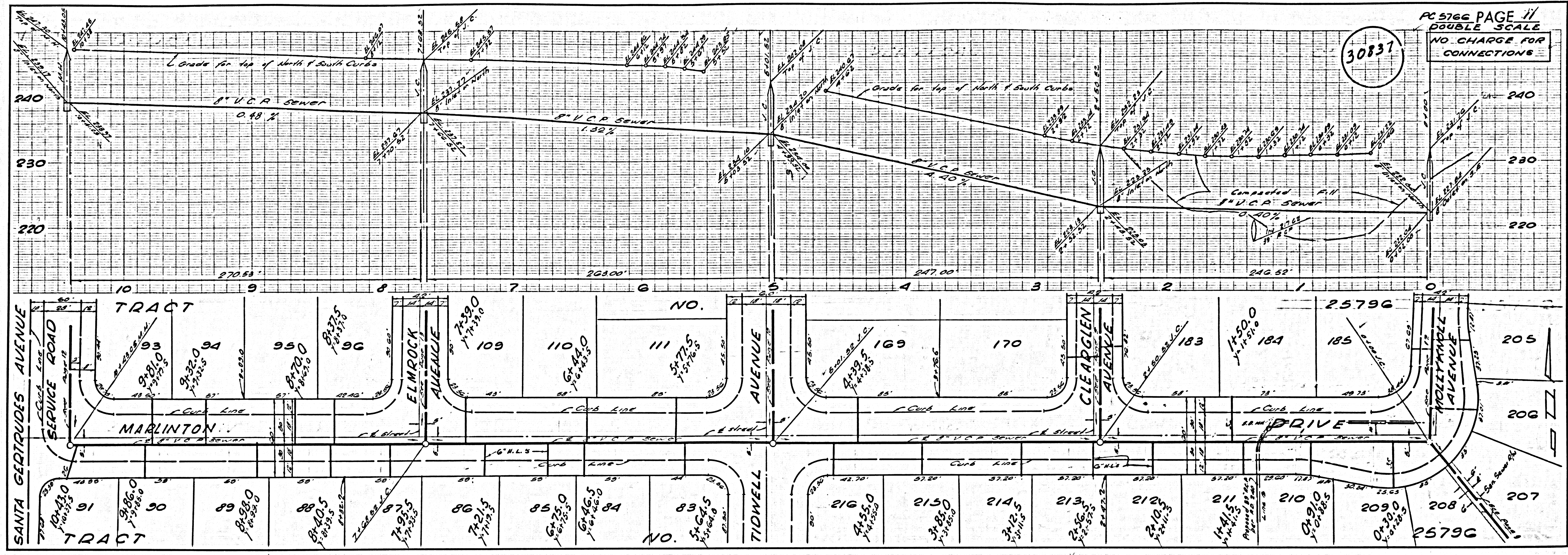
30832





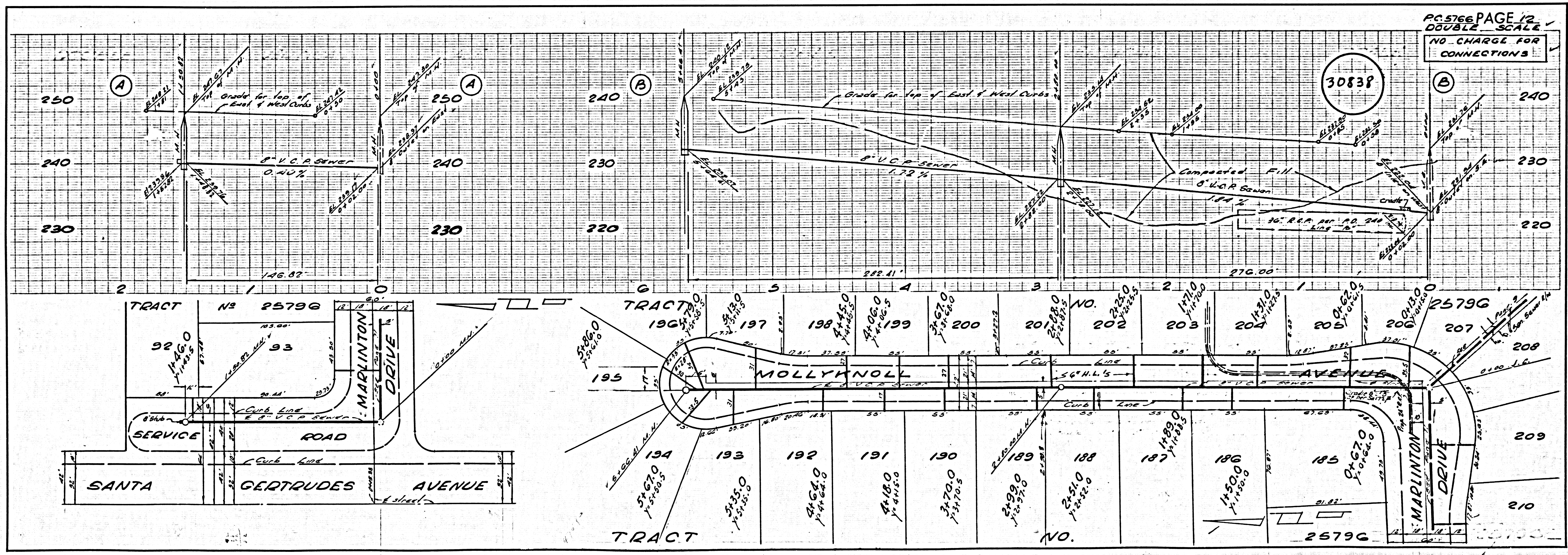


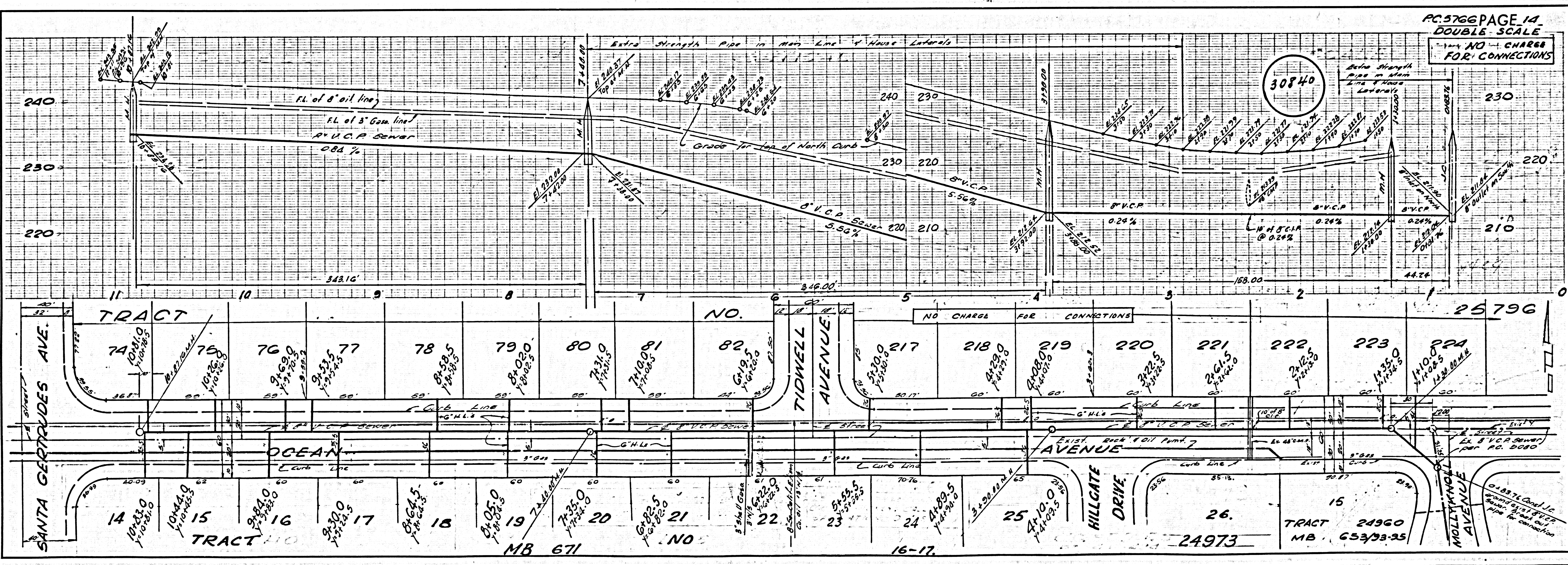
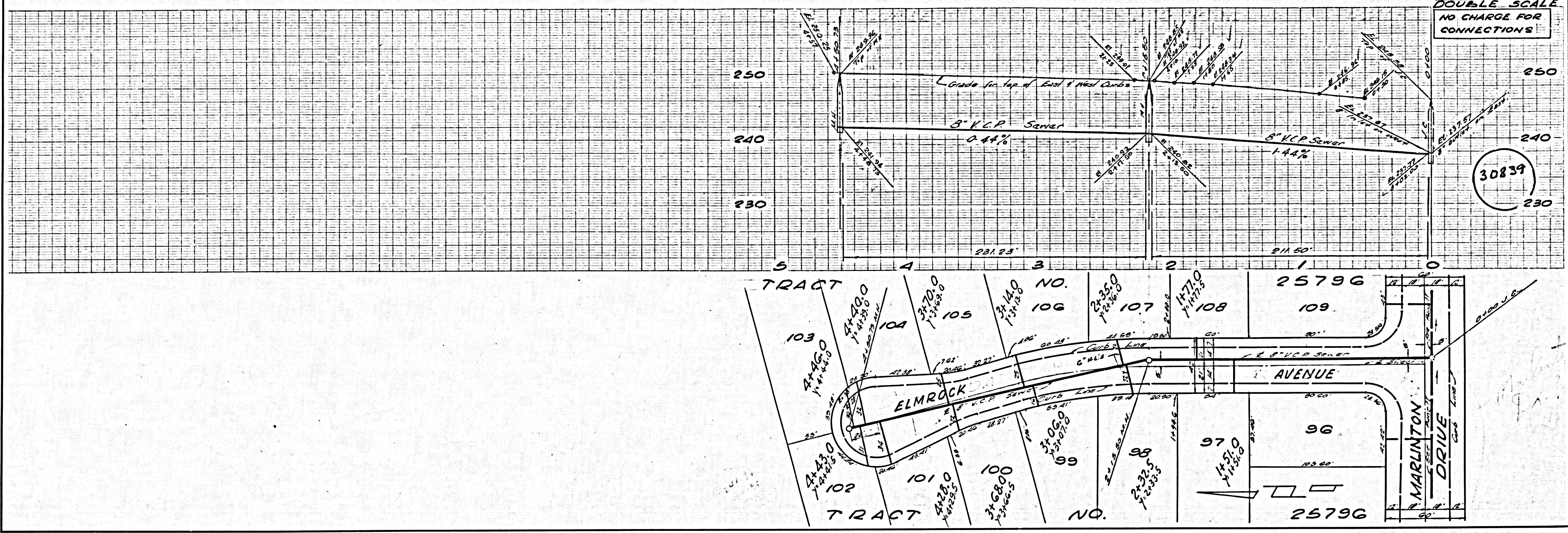
30831



8" V.C.P. 1027  
6" H.L. 575

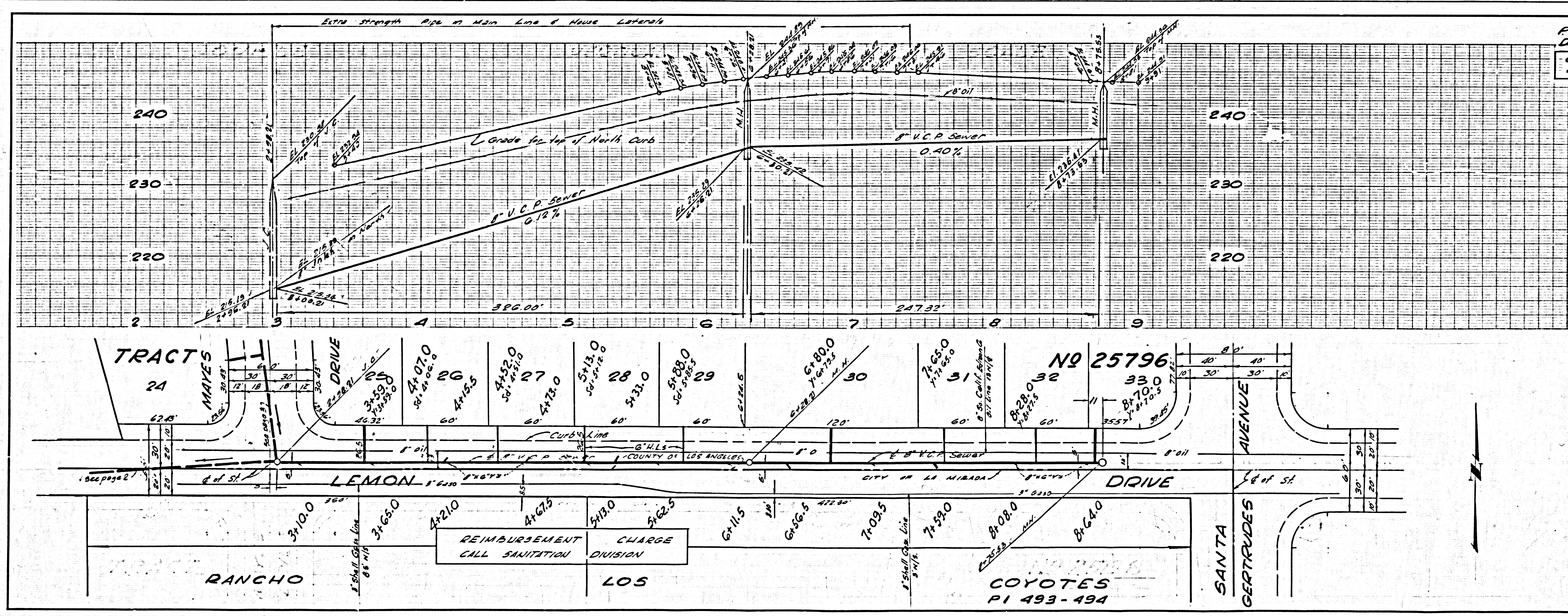
30832





PC 5766 PAGE 15  
DOUBLE SCALE  
COLLECT CHARGES  
AS INDICATED

30141



576  
588  
588