

PICO RIVERA BLDG. DIST. NO. 11-01

PROFILE ALIGNMENT AND GRADE OF P.C. 5769

SANITARY SEWERS PAGE 1

TO BE CONSTRUCTED IN

TRACT No 26229

PRIVATE CONTRACT NO. 5769

W.S. 36

2 SHEETS; 3 PAGES

SCALE: HORIZ. 1" = 40' VERT. 1" = 4'

JAN., 1961

PREPARED IN THE OFFICES OF

OLSON SURVEYING SERVICE, INC.

30363

REG. C. E. NO. 2820

FOR LEGEND SEE PLAN NO. S-A-64

NOTES:  
 GRADES TO WHICH THIS IMPROVEMENT IS TO BE CONSTRUCTED ARE SHOWN ON PLANS AND PROFILES. GRADE POINTS FOR TOP OF CURBS, CENTER LINE OF STREETS, OR CENTER LINE OF ALLEYS ARE SHOWN BY CIRCLES ON PROFILES AT ALL POINTS BETWEEN DESIGNATED POINTS THE GRADE SHALL BE ESTABLISHED SO AS TO CONFORM TO A STRAIGHT LINE DRAWN BETWEEN SAID DESIGNATED POINTS.  
 ELEVATIONS ARE IN FEET ABOVE M.S.C. & S.S. SEA LEVEL DATUM OF 1929.  
 THIS DRAWING AND THE DATA HEREON ARE HEREBY MADE A PART OF THE SPECIFICATIONS.  
 WORK SHALL BE CONSTRUCTED ACCORDING TO SPECIFICATIONS ON FILE IN THE OFFICE OF THE CITY ENGINEER AND SHALL BE PROSECUTED ONLY IN THE PRESENCE OF THE CITY ENGINEER.  
 BEFORE WORK CAN BE STARTED, THE CONTRACTOR MUST OBTAIN A PERMIT TO EXCAVATE IN COUNTY STREETS FROM L.A. COUNTY ROAD DIST. DISTRICT OFFICE NO. 8 AND MAKE A DEPOSIT WITH THE CITY OF PICO RIVERA \$615.00 SUFFICIENT TO COVER THE COST OF CONSTRUCTION INSPECTION AND RECORD PLANS.  
 APPROVAL OF THIS PLAN BY THE CITY OF PICO RIVERA DOES NOT CONSTITUTE A REPRESENTATION AS TO THE ACCURACY OF THE LOCATION OR THE EXISTENCE OR NON-EXISTENCE OF ANY UNDERGROUND UTILITY PIPE, OR STRUCTURE WITHIN THE LIMITS OF THIS PROJECT. THIS NOTE APPLIES TO ALL PAGES.  
 IF WORK IS TO BE DONE IN A STATE HIGHWAY, A PERMIT MUST BE OBTAINED FROM THE STATE OF CALIFORNIA, DIVISION OF HIGHWAYS, 120 SOUTH SHINE STREET.

CITY OF PICO RIVERA - CALIFORNIA

APPROVED, JOHN A. LAMBIE, CITY ENGINEER APPROVED, C.R. COMPTON, CHIEF ENGINEER

CO. SAN. DIST. NO. 2

BY *C.E. Brumby* ASST. SANITATION ENGINEER BY *L. J. Williams* OFFICE ENGINEER

CHECKED BY *S.K. Wicks* 2-3-61

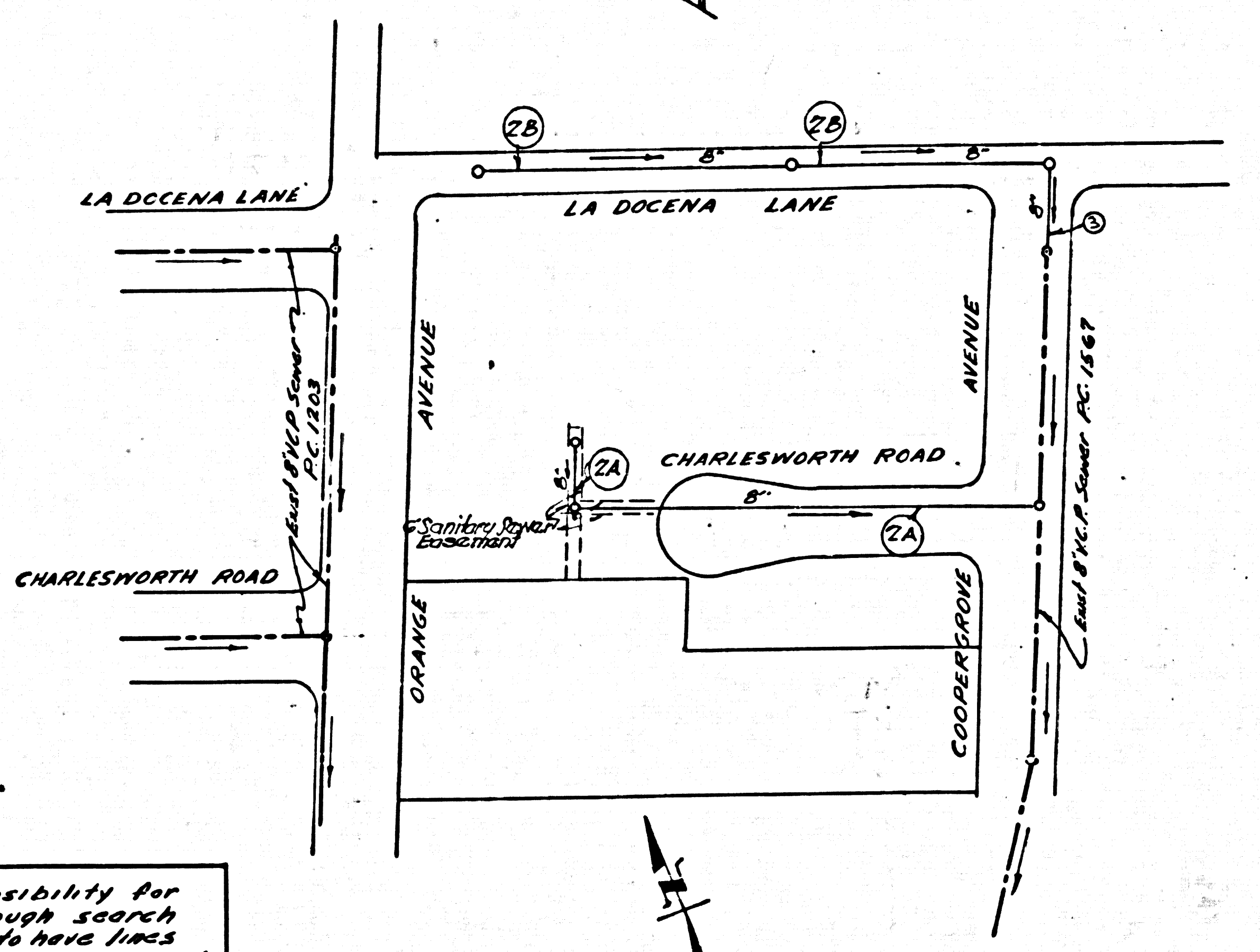
OFFICE OF CITY ENGINEER, REG. C. E. NO. 3464

SUBMITTED BY *John L. Eaton* 2-3-61

163 CERRITOS REGIONAL ENGINEER REG. C. E. NO. 3971

- NOTES:
1. PROVIDE STAKES ON THE PROPERTY LINE OR PROPERTY LINES PRODUCED AT RIGHT ANGLES TO THE SEWER LINE AT THE CENTER LINE OF EACH MANHOLE.
  2. NO REPRESENTATIVE OF THE CITY ENGINEER WILL SURVEY OR LAY OUT ANY PORTION OF THE WORK.
  3. THE OWNER OR HIS AUTHORIZED REPRESENTATIVE SHALL FURNISH THE CITY ENGINEER WITH GRADE SHEETS AND STATIONING FOR ALL HOUSE LATERALS AND Y BRANCHES AND SHALL PROVIDE STAKES FOR THEM AT THEIR PROPER LOCATIONS WITH STATIONING PLAINLY MARKED. ANY CHANGE IN LOCATION SHALL BE REQUESTED IN WRITING BY THE OWNER OR HIS REPRESENTATIVE.
  4. THE PRIVATE ENGINEER SHALL FURNISH THE HOUSE LATERAL DEPTH AT THE PROPERTY LINE BELOW THE TOP OF CURB ELEVATION FOR EACH HOUSE LATERAL ON THE GRADE SHEET.
  5. NO REVISIONS SHALL BE MADE IN THESE PLANS WITHOUT THE APPROVAL OF THE CITY ENGINEER.
  6. USE STANDARD MANHOLE FRAMES AND COVERS, S-117A.
  7. USE STANDARD STRENGTH PIPE.
  8. USE CEMENT MORTAR OR "WEDGE-LOCK" OR "SPEED-SEAL" FOR ALL V.C.P. JOINTS PER SPECS. SECS. 34 & 40.
  9. RESURFACE ALL TRENCH WITHIN PAVED AREA TO MEET L.A. COUNTY, ROAD DEPT OR CALIF. STATE HIGHWAY REQUIREMENTS IN ACCORDANCE WITH PERMITS.
  10. EXCAVE FOUR FEET OF SEWER AT POINTS OF INTERFERENCE WITH POLES, CASE III, S-172.
  11. HOUSE LATERALS TO BE CONSTRUCTED WITH INVERTS AT PROPERTY LINE .6 FEET BELOW CURB GRADE EXCEPT AS NOTED.
  12. ALL STRUCTURES SHALL BE BRICK SEWER STRUCTURES, S-104.
  13. FOR ALLOWABLE LEAKAGE TEST USE FORMULA NO. 1 SPEC'S, SEC. 84.
  14. MANHOLE TOPS IN UNIMPROVED RIGHTS-OF-WAY TO BE SIX INCHES ABOVE FINISHED GRADE.
  15. THE CONTRACTOR SHALL NOTIFY THE CONSTRUCTION DIVISION BY TELEPHONE, MADISON 9-4747, AT LEAST TWENTY-FOUR HOURS BEFORE STARTING ANY WORK UNDER THIS CONTRACT.
  16. STANDARD SPECIFICATIONS DATED SEPTEMBER 18, 1950 ON FILE IN CITY SHALL APPLY IN THE CONSTRUCTION OF THIS PROJECT.

Olson Surveying Service Inc. assumes no responsibility for the location of existing utility lines. A thorough search has been made with utility companies known to have lines on this area and with the County of Los Angeles Underground Section. The sewer contractor shall verify locations of all utility lines.



INDEX MAP  
 P.C. 5769  
 Scale 1" = 100'

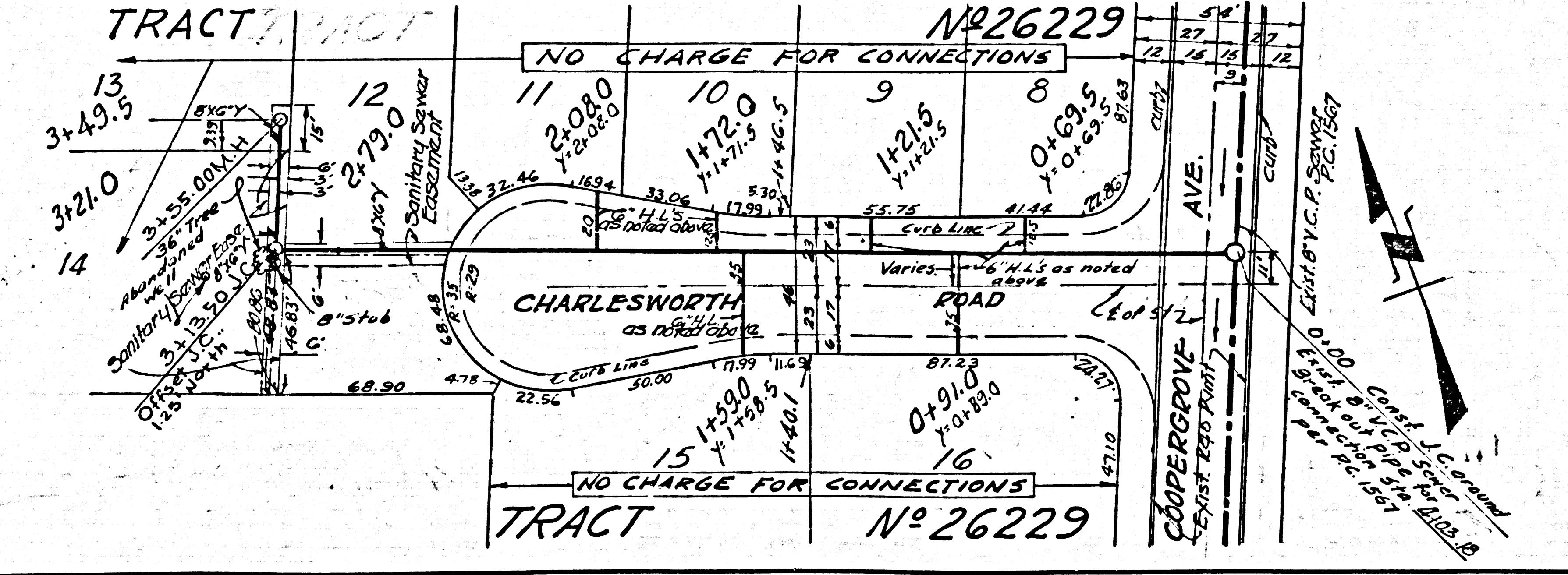
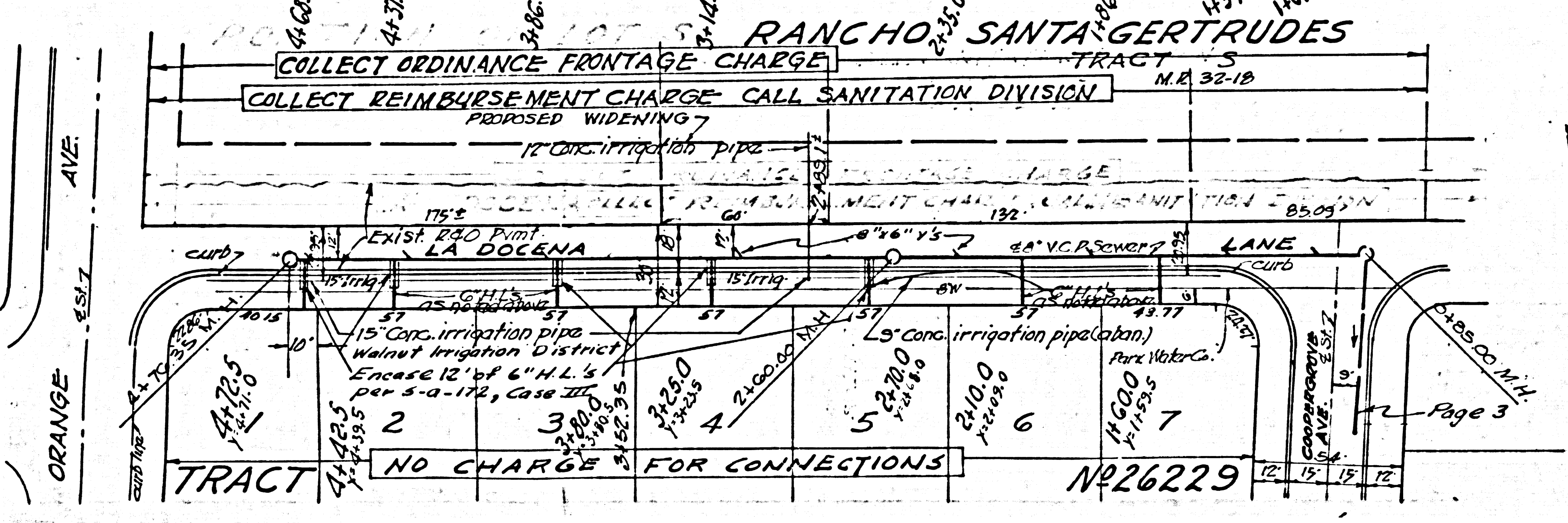
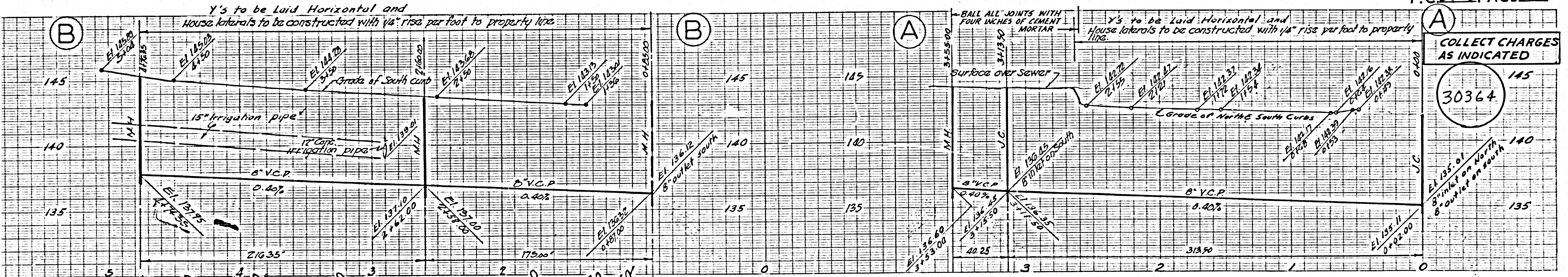
COLLECT CHARGES AS INDICATED  
*D.M. Hoyle* 2-3-61

REVISION:  
 REALIGNED MAIN LINE SEWER ON PAGE 2A BETWEEN STA. 0+00 AND STA. 3+13.50  
*John L. Eaton* 3-3-61

P.C. 5769 PAGE 2

COLLECT CHARGES AS INDICATED

30364



NO CHARGE FOR CONNECTIONS

30365

