

LA MIRADA BLDG. DIST. NO. 4.08

PROFILE ALIGNMENT AND GRADE OF P.C. 5777

SANITARY SEWERS PAGE 1

TO BE CONSTRUCTED IN

FIRST ALLEY WEST OF
LUITWIELEB AVENUE.

PRIVATE CONTRACT NO. 5777

W.S. 34

1 SHEET ; 2 PAGES

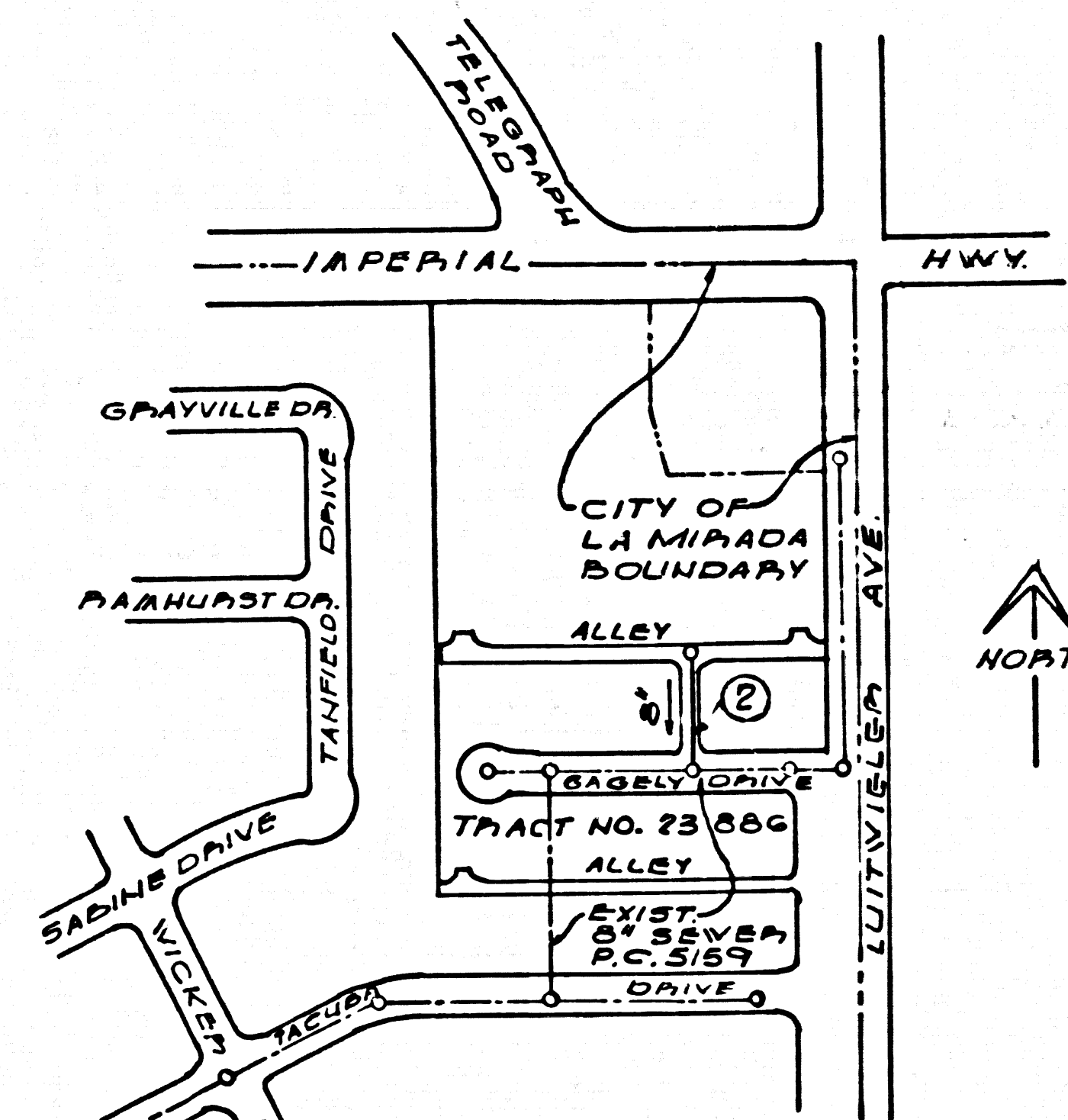
SCALE: VERT. 1" = 4' DEC. 1960

PREPARED IN THE OFFICES OF
FAXON, GRUYS & SAYLER
ARCHITECTS & ENGINEERS

By: F. A. Sayler
REG. C. E. NO. 5661

FOR LEGEND SEE PLAN NO. S-A-64

30502



P.C. 5777
INDEX MAP
SCALE 1" = 300'

NOTES:

1. PROVIDE STAKES ON THE PROPERTY LINE OR PROPERTY LINES PRODUCED AT RIGHT ANGLES TO THE SEWER LINE AT THE CENTER LINE OF EACH MANHOLE.
2. NO REPRESENTATIVE OF THE CITY ENGINEER WILL SURVEY OR LAY OUT ANY PORTION OF THE WORK.
3. THE OWNER OR HIS AUTHORIZED REPRESENTATIVE SHALL FURNISH THE CITY ENGINEER WITH GRADE SHEETS AND STATIONING FOR ALL HOUSE LATERALS AND Y BRANCHES AND SHALL PROVIDE STAKES FOR THEM AT THEIR PROPER LOCATIONS WITH STATIONING PLAINLY MARKED. ANY CHANGE IN LOCATION SHALL BE REQUESTED IN WRITING BY THE OWNER OR HIS REPRESENTATIVE.
4. THE PRIVATE ENGINEER SHALL FURNISH THE HOUSE LATERAL DEPTH AT THE PROPERTY LINE BELOW THE TOP OF CURB ELEVATION FOR EACH HOUSE LATERAL ON THE GRADE SHEET.
5. NO REVISIONS SHALL BE MADE IN THESE PLANS WITHOUT THE APPROVAL OF THE CITY ENGINEER.
6. USE STANDARD MANHOLE FRAMES AND COVERS, S-117, A.
7. USE STANDARD STRENGTH PIPE.
8. USE CEMENT MORTAR OR "WEDGE-LOCK" OR "SPEED-SEAL" FOR ALL V.C.P. JOINTS PER SPEC'S, SECS. 14 & 48.
9. RESURFACE ALL TRENCH WITHIN PAVED AREA TO MEET L.A. COUNTY ROAD DEPT. OR CALIF. STATE HIGHWAY REQUIREMENTS IN ACCORDANCE WITH PERMITS.
10. ENCASE FOUR FEET OF SEWER AT POINTS OF INTERFERENCE WITH POLES, CASE III, S-172.
11. ~~INDICATE LATERALS TO BE CONSTRUCTED WITHIN MANHOLE AT PROPERTY LINE. SEE BELOW CURB GRADE SHEET.~~
12. ALL STRUCTURES SHALL BE BRICK SEWER STRUCTURES, S-104.
13. FOR ALLOWABLE LEAKAGE TEST USE FORMULA NO. 1 SPEC'S, SEC. 54.
14. MANHOLE TOPS IN UNIMPROVED RIGHTS-OF-WAY TO BE SIX INCHES ABOVE FINISHED GRADE.
15. THE CONTRACTOR SHALL NOTIFY THE CONSTRUCTION DIVISION BY TELEPHONE, MADISON 7-470, EXT. 81, AT LEAST TWENTY-FOUR HOURS BEFORE STARTING ANY WORK UNDER THIS CONTRACT.
16. STANDARD SPECIFICATIONS DATED OCTOBER 10, 1960, ON FILE IN CITY, APPLY IN THE CONSTRUCTION OF THIS PROJECT.

BENCH MARK: 54.4042 ELEVATION 171.836 - L.A. CO. ROAD DEPT. MONUMENT IN MAC. PAV'T. 6'2" EAST OF LUITWIELEB AVE. 12' WEST OF TEL. POLE W 86° 51' 123 G' SOUTH OF 2 IMPERIAL HIGHWAY IN CASING WITH COVER. LA MIRADA QUAD. 1955

NO CONNECTIONS FOR THE DISPOSAL OF INDUSTRIAL WASTES SHALL BE MADE TO SEWERS SHOWN ON THESE DRAWINGS WITHOUT WRITTEN PERMISSION FROM THE CHIEF ENGINEER AND GENERAL MANAGER OF THE COUNTY SANITATION DISTRICTS.

NO CHARGE FOR CONNECTION

R. A. Moore 2-17-61

APPROVED BY: Robert A. Moore P.E. No. 7-18-60
INDUSTRIAL WASTE DIVISION

NOTE: GRADES TO WHICH THIS IMPROVEMENT IS TO BE CONSTRUCTED ARE SHOWN ON PLANS AND PROFILES. GRADE POINTS FOR TOP OF CURB, CENTER LINE OF STREETS, OR CENTER LINE OF ALLEYS ARE SHOWN BY CIRCLES ON PROFILES. AT ALL POINTS BETWEEN DESIGNATED POINTS THE GRADE SHALL BE ESTABLISHED SO AS TO CONFORM TO A STRAIGHT LINE DRAWN BETWEEN SAID DESIGNATED POINTS. ELEVATIONS ARE IN FEET ABOVE U.S.C. & G.S. SEA LEVEL DATUM OF 1929. THIS DRAWING AND THE DATA HEREON ARE HEREBY MADE A PART OF THE SPECIFICATIONS. WORK SHALL BE CONSTRUCTED ACCORDING TO SPECIFICATIONS ON FILE IN THE OFFICE OF THE CITY ENGINEER AND SHALL BE PROSECUTED ONLY IN THE PRESENCE OF THE COUNTY ENGINEER. BEFORE WORK CAN BE STARTED, THE CONTRACTOR MUST OBTAIN A PERMIT TO EXCAVATE IN CITY STREETS FROM THE L.A. COUNTY ROAD DEPT., DISTRICT OFFICE NO. 6, AND MAKE A DEPOSIT WITH THE CITY OF LA MIRADA IN THE OFFICE OF THE CITY ENGINEER, SUFFICIENT TO COVER THE COST OF CONSTRUCTION INSPECTION AND RECORD PLANS. APPROVAL OF THIS PLAN BY THE CITY OF LA MIRADA DOES NOT CONSTITUTE A REPRESENTATION AS TO THE ACCURACY OF THE LOCATION OR THE EXISTENCE OR NON-EXISTENCE OF ANY UNDERGROUND UTILITY PIPE, OR STRUCTURE WITHIN THE LIMITS OF THIS PROJECT. THIS NOTE APPLIES TO ALL PAGES. IF WORK IS TO BE DONE IN A STATE HIGHWAY, A PERMIT MUST BE OBTAINED FROM THE STATE OF CALIFORNIA, DIVISION OF HIGHWAYS, 120 SOUTH SPRING STREET.

CITY OF LA MIRADA, CALIFORNIA

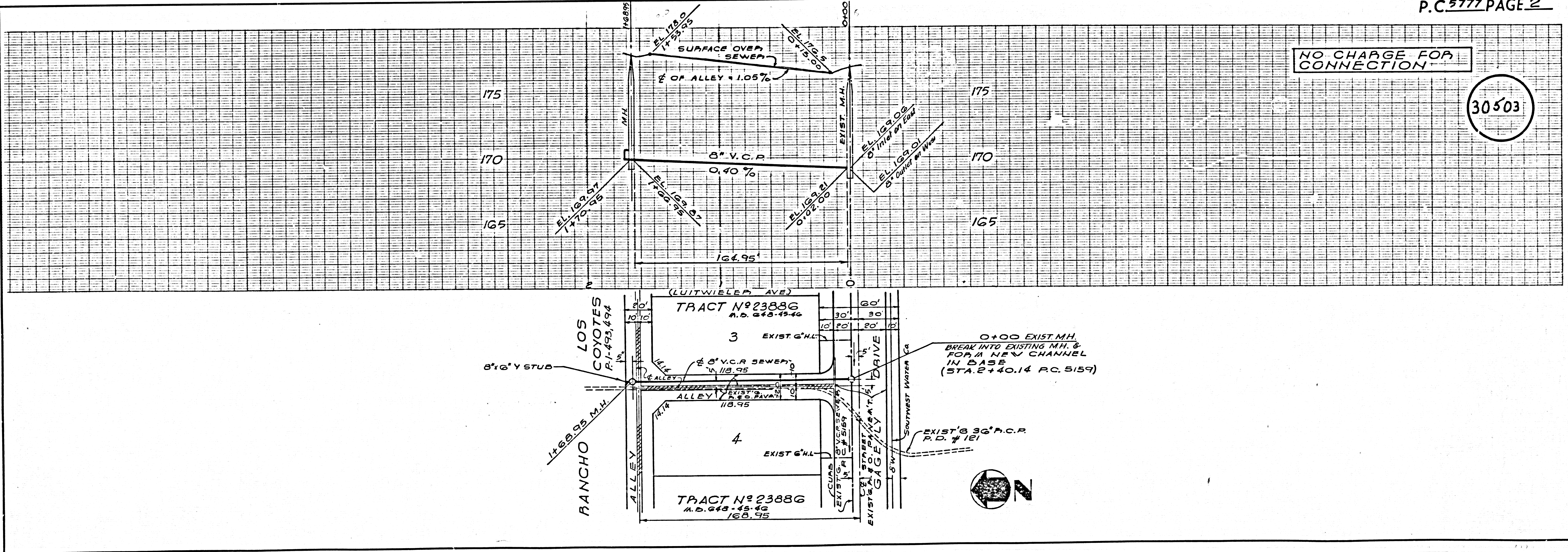
APPROVED, JOHN A. LAMBIE, CITY ENGINEER APPROVED, C.A. COMPTON, CHIEF ENGINEER
CO. SAN. DIST. NO. 15

BY: C. E. Moore ASSISTANT SANITATION ENGINEER BY: J. A. Lambie CITY ENGINEER

CHECKED BY: W. D. Oude 3-22-61
OFFICE OF CITY ENGINEER, REG. C. E. NO. 3458

SUBMITTED BY: John L. Estor 3-17-61
LOS CERRITOS REGIONAL ENGINEER REG. C. E. NO. 3071

P.C. 5777 PAGE 2



NO CHARGE FOR CONNECTION

30503