

TO BE CONSTRUCTED IN

WOODBEND DRIVE

PRIVATE CONTRACT NO. 5779

W.S. #49

2 SHEETS; 3 PAGES

SCALE: VERT. 1"=4' HORIZ. 1"=40'

PREPARED IN THE OFFICES OF ANDREASEN ENGINEERING COMPANY 777 EAST HOLT AVE. POMONA CALIFORNIA

By: C.S. Jordan 1-16-61 REG. C. E. NO. 10619

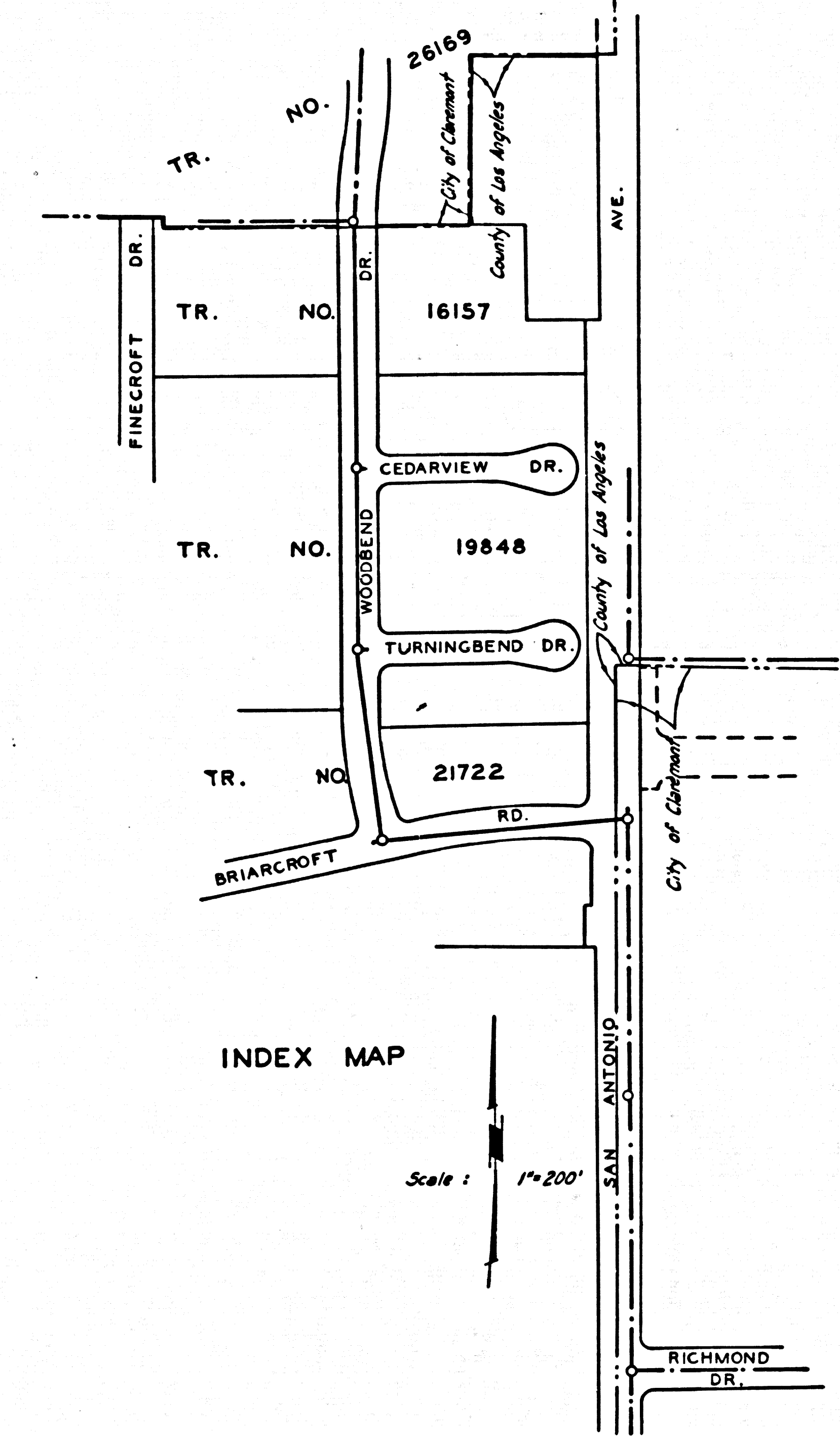
FOR LEGEND SEE PLAN NO. S-A-54

NOTES:

1. PROVIDE STAKES ON THE PROPERTY LINE OR PROPERTY LINES PRODUCED AT RIGHT ANGLES TO THE SEWER LINE AT THE CENTER LINE OF EACH MANHOLE.
2. NO REPRESENTATIVE OF THE COUNTY ENGINEER WILL SURVEY OR LAY OUT ANY PORTION OF THE WORK.
3. THE OWNER OR HIS AUTHORIZED REPRESENTATIVE SHALL FURNISH THE COUNTY ENGINEER WITH GRADE SHEETS AND STATIONING FOR ALL HOUSE LATERALS AND Y BRANCHES AND SHALL PROVIDE STAKES FOR THEM AT THEIR PROPER LOCATIONS WITH STATIONING PLAINLY MARKED. ANY CHANGE IN LOCATION SHALL BE REQUESTED IN WRITING BY THE OWNER OR HIS REPRESENTATIVE.
4. THE PRIVATE ENGINEER SHALL FURNISH THE HOUSE LATERAL DEPTH AT THE PROPERTY LINE BELOW THE TOP OF CURB ELEVATION FOR EACH HOUSE LATERAL ON THE GRADE SHEET.
5. NO REVISIONS SHALL BE MADE IN THESE PLANS WITHOUT THE APPROVAL OF THE COUNTY ENGINEER.
6. USE STANDARD MANHOLE FRAMES AND COVERS, S-107A EXCEPT AS NOTED.
7. USE STANDARD STRENGTH PIPE EXCEPT AS NOTED.
8. USE CEMENT MORTAR OR "WEDGE-LOCK" OR "SPEED-SEAL" FOR ALL V.C.P. JOINTS PER SPEC'S, SECS. 34 & 48.
9. RESURFACE ALL TRENCH WITHIN PAVED AREA TO MEET L.A. COUNTY ROAD DEPT. OR CALIF. STATE HIGHWAY REQUIREMENTS IN ACCORDANCE WITH PERMITS.
10. ENCASE FOUR FEET OF SEWER AT POINTS OF INTERFERENCE WITH POLES, CASE III, S-172.
11. HOUSE LATERALS TO BE CONSTRUCTED WITH INVERTS AT PROPERTY LINE  $\frac{3}{4}$  FEET BELOW CURB GRADE EXCEPT AS NOTED.
12. ALL STRUCTURES SHALL BE BRICK SEWER STRUCTURES, S-104, EXCEPT AS NOTED.
13. FOR ALLOWABLE LEAKAGE TEST USE FORMULA NO. 1 SPEC'S, SEC. 34.
14. MANHOLE TOPS IN UNIMPROVED RIGHTS-OF-WAY TO BE SIX INCHES ABOVE FINISHED GRADE.
15. THE CONTRACTOR SHALL NOTIFY THE CONSTRUCTION DIVISION BY TELEPHONE, HANDSON, OR BY REGISTERED MAIL SEVEN HOURS BEFORE STARTING ANY WORK UNDER THIS CONTRACT.
16. NO CONNECTIONS TO BE PERMITTED TO THIS SANITARY SEWER LINE UNTIL PROPERTY HAS ANNEXED TO Sanitation Dist. No. 21 and permits have been secured from the City of Claremont and from the County of Los Angeles.

ESTIMATE OF QUANTITIES

1. 1253 lin. ft. 8" V.C.P. @ 19'-8 1/4" Ys @ stoppers
2. 2 ea. 6" chimneys
3. 3 ea. Std. M.H.'s



INDEX MAP

Scale: 1"=200'

NOTE: GRADES TO WHICH THIS IMPROVEMENT IS TO BE CONSTRUCTED ARE SHOWN ON PLANS AND PROFILES. GRADE POINTS FOR TOP OF CURBS, CENTER LINE OF STREETS, OR CENTER LINE OF ALLEYS ARE SHOWN BY CIRCLES ON PROFILES. AT ALL POINTS BETWEEN DESIGNATED POINTS THE GRADE SHALL BE ESTABLISHED SO AS TO CONFORM TO A STRAIGHT LINE DRAWN BETWEEN SAID DESIGNATED POINTS. ELEVATIONS ARE IN FEET ABOVE U.S.C. & G.S. SEA LEVEL DATUM OF 1929. THIS DRAWING AND THE DATA HEREON ARE HEREBY MADE A PART OF THE SPECIFICATIONS ON FILE IN THE OFFICE OF THE COUNTY ENGINEER AND SHALL BE PROSECUTED ONLY IN THE PRESENCE OF THE COUNTY ENGINEER. BEFORE WORK CAN BE STARTED, THE CONTRACTOR MUST OBTAIN A PERMIT TO EXCAVATE IN COUNTY STREETS FROM THE L.A. COUNTY ROAD DEPT., DISTRICT OFFICE NO. 21, AND MAKE A DEPOSIT WITH THE COUNTY ENGINEER, ROOM 314 SAN AMERICAN BUILDING, 251 SO. BROADWAY SUFFICIENT TO COVER THE COST OF CONSTRUCTION INSPECTION AND RECORD PLANS. APPROVAL OF THIS PLAN BY THE COUNTY OF LOS ANGELES DOES NOT CONSTITUTE A REPRESENTATION AS TO THE ACCURACY OF THE LOCATION OR THE EXISTENCE OR NON-EXISTENCE OF ANY UNDERGROUND UTILITY PIPE, OR STRUCTURE WITHIN THE LIMITS OF THIS PROJECT. THIS NOTE APPLIES TO ALL PAGES. IF WORK IS TO BE DONE IN A STATE HIGHWAY, A PERMIT MUST BE OBTAINED FROM THE STATE OF CALIFORNIA, DIVISION OF HIGHWAYS, 128 SOUTH SPRING STREET.

COUNTY OF LOS ANGELES, CALIFORNIA

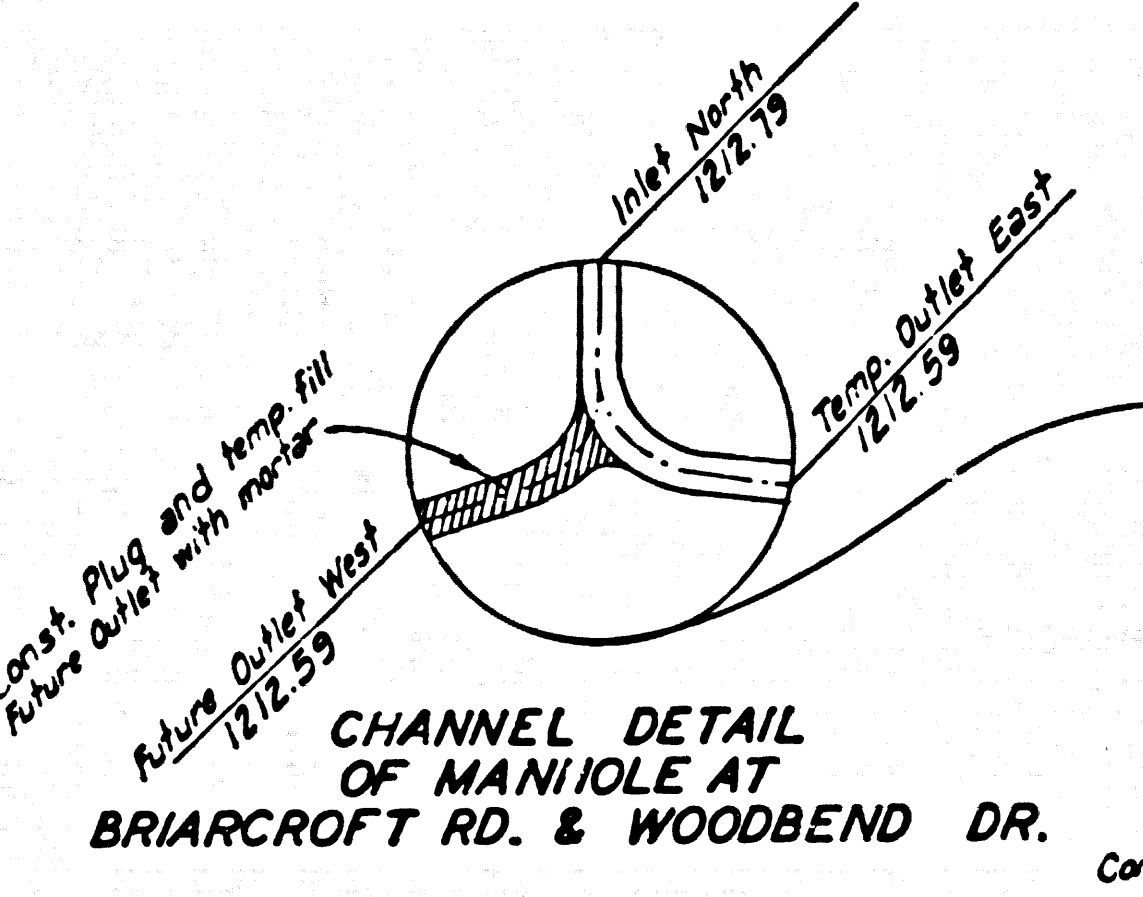
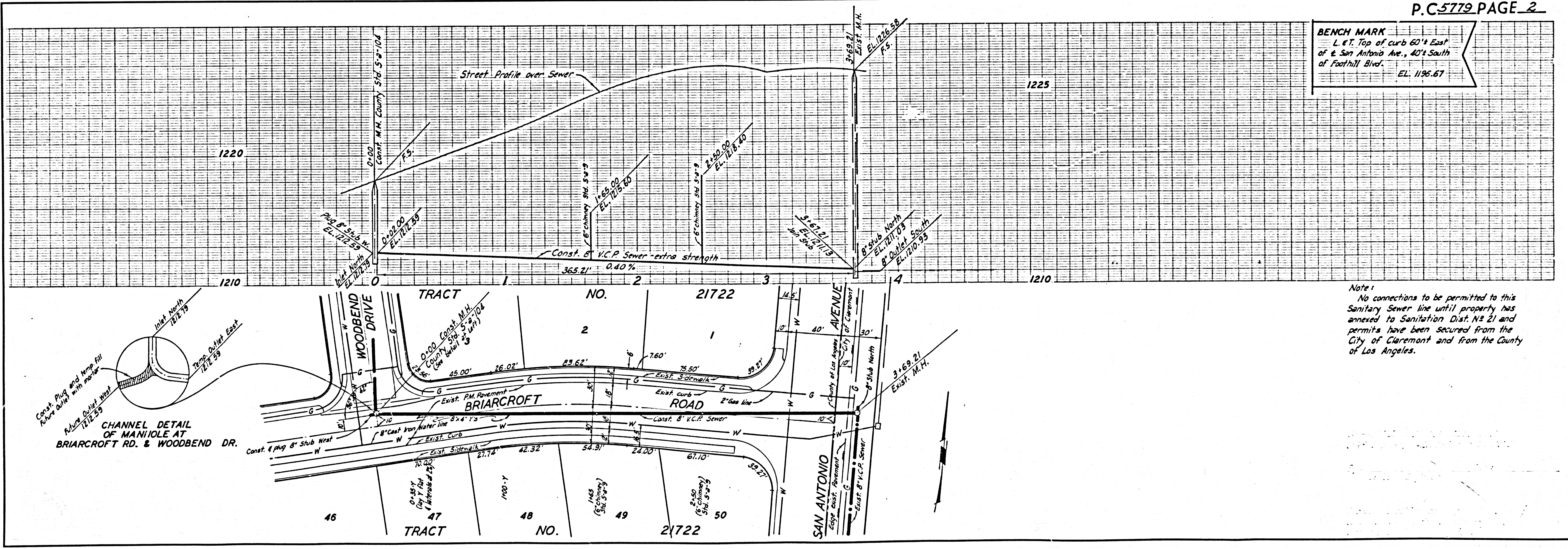
APPROVED, JOHN A. LAMBIE, COUNTY ENGINEER APPROVED, C.R. COMPTON, CHIEF ENGINEER

BY: [Signature] ASST. SANITATION ENGINEER BY: [Signature] OFFICE ENGINEER

CHECKED BY: \_\_\_\_\_ OFFICE OF COUNTY ENGINEER, REG. C. E. NO. \_\_\_\_\_

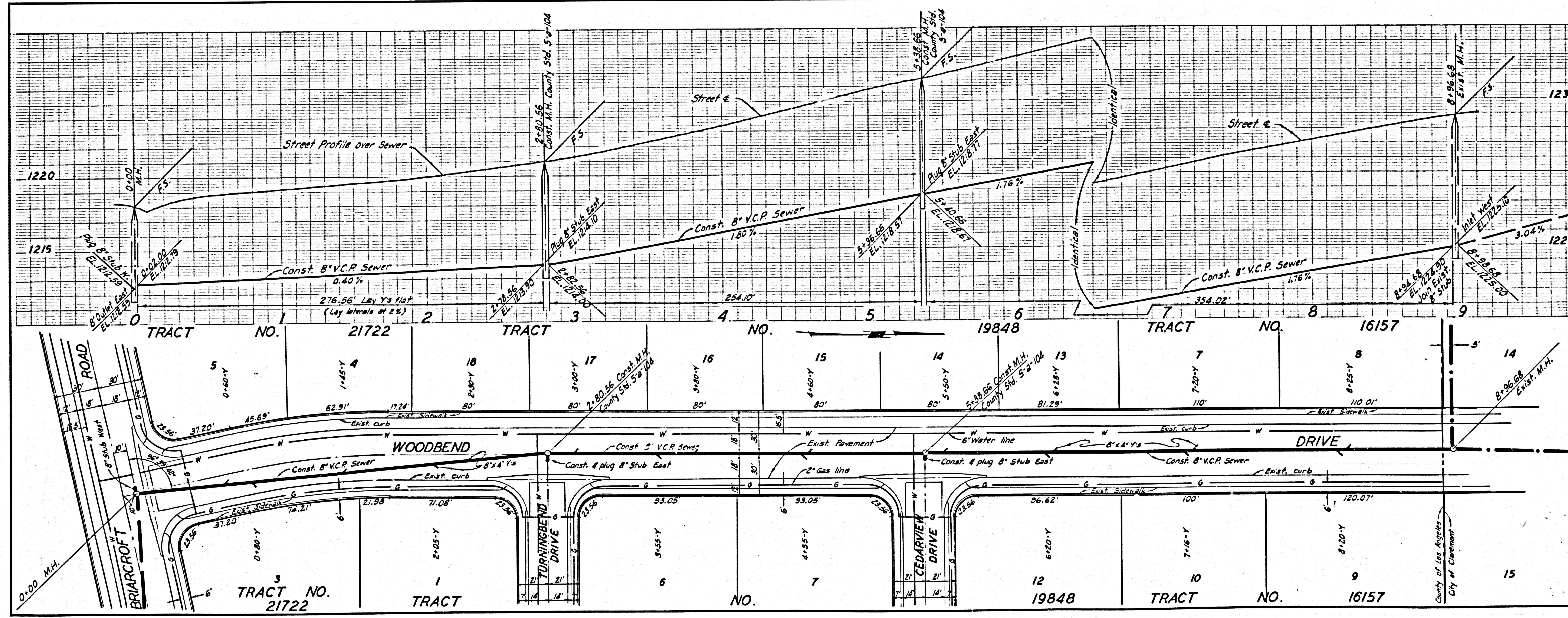
County Sanitation District approval given with understanding that connection to San Antonio Trunk is a temporary connection for property west of the frontage on San Antonio Ave.

BENCH MARK  
L & T. Top of curb 60' East  
of S. San Antonio Ave., 40' South  
of Foothill Blvd.  
EL. 1195.67



Note:  
No connections to be permitted to this Sanitary Sewer line until property has annexed to Sanitation Dist. No. 21 and permits have been secured from the City of Claremont and from the County of Los Angeles.

BENCH MARK  
 L & T. Top of curb 60' East  
 of San Antonio Ave., 40' South  
 of Foothill Blvd  
 EL. 1196.67



Note:  
 No connections to be permitted  
 to this Sanitary Sewer line until  
 property has annexed to Sanitation  
 Dist. No. 21 and permits have been  
 secured from the City of Claremont  
 and from the County of Los Angeles.