

PRIVATE SEWER PROFILE  
 LANCASTER BLDG. DIST. NO. 8  
 W.S. 792, Santa Anita 108-03  
 J.N. 0355-24 see notes at left

30911

COUNTY OF LOS ANGELES, CALIFORNIA  
 APPROVED, JOHN A. JAMES, County Engineer  
 By *[Signature]*  
 APPROVED, *[Signature]*  
 Checked *[Signature]*  
 Office of County Engineer, Rm. C.E. No. 2496

The above approval of Private Contract 5785 pertains only to the S.W.P. Sewer and Manholes between station 0+00.00 and station 2+22.26.

Note: Elevations are in feet above U.S.C. & G.S. Sea Level Datum of 1929. This Drawing and the data hereon are hereby made a part of the specifications. Work shall be constructed according to specifications on file in the office of the County Engineer and shall be prosecuted only in the presence of the County Engineer.

Before work can be started, the contractor must obtain a permit from the County Engineer, Room 320, 108 W. 2nd St., Los Angeles, California. A permit must be obtained from the State of California, Division of Highways, 122 South Spring Street, Los Angeles, California.

Approval of this plan by the County of Los Angeles does not constitute an approval by the County of the location, siting, or the extent of any underground utility, pipe, or structure here within the limits of this project.

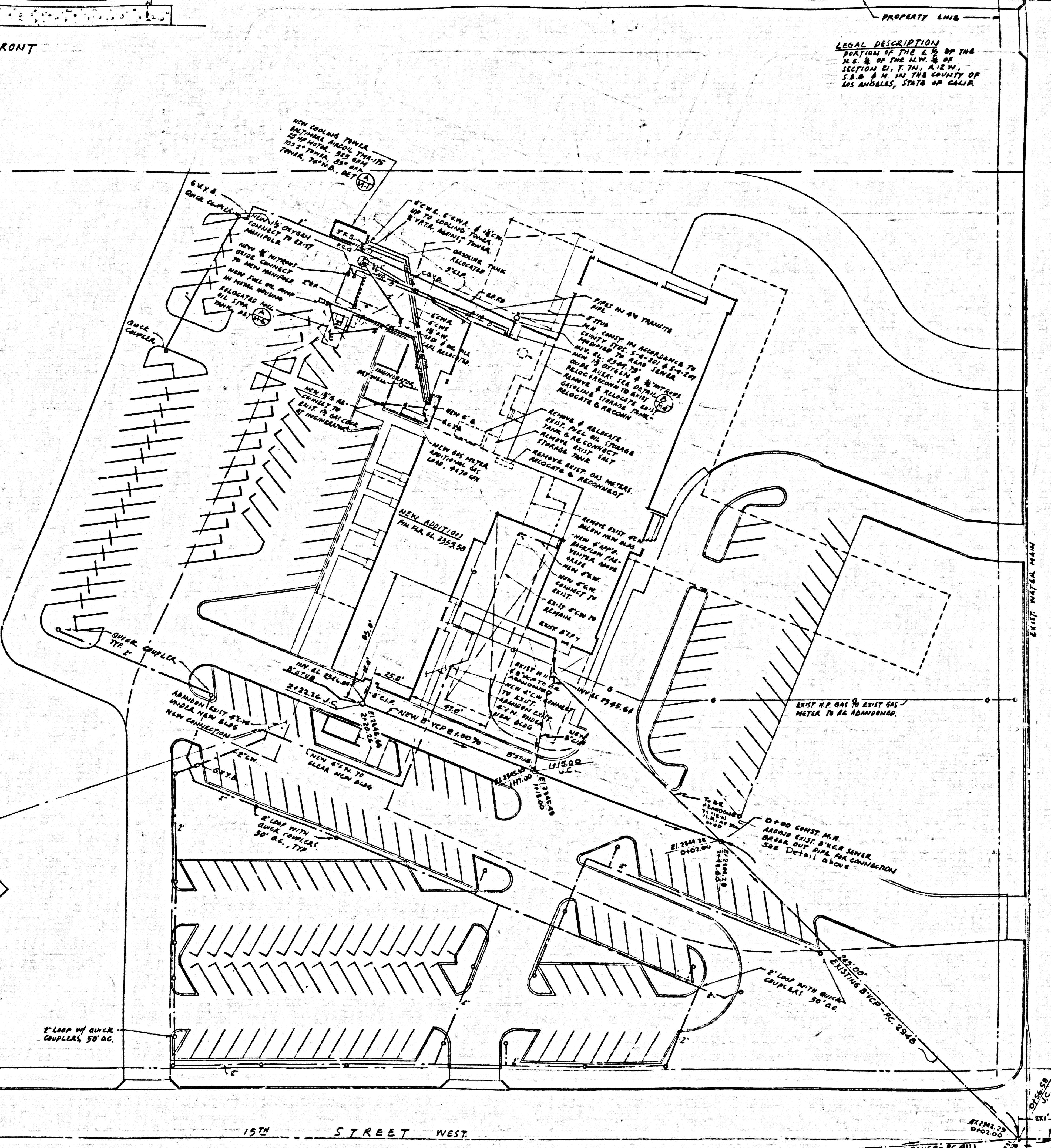
Note: No representation of the County Engineer will survey or layout any portion of the work. No revisions shall be made in these plans without approval of the County Engineer.

1. Use standard manhole frames and covers, S-117, 36\"/>

NOTE: THE CONTRACTOR SHALL NOTIFY THE CONSTRUCTION AND SYSTEMS DIVISION BY TELEPHONE, HOURS 8:00 A.M. TO 5:00 P.M., AT LEAST 24 HOURS BEFORE STARTING ANY WORK UNDER THIS CONTRACT.

APPROVED *[Signature]*  
 Industrial Waste Division  
 Date

NO CONNECTIONS FOR THE DISPOSAL OF INDUSTRIAL WASTES SHALL BE MADE TO SEWERS BROWN ON THESE DRAWINGS WITHOUT WRITTEN PERMISSION FROM THE CHIEF ENGINEER AND GENERAL MANAGER OF THE COUNTY SANITATION DISTRICTS.



UTILITIES PLOT PLAN  
 SCALE: 1\"/>

LEGEND

SYMBOL	INDICATES	DESCRIPTION
SP	SEWER PIPE	EXISTING SEWER PIPE
WA	WATER MAIN	EXISTING WATER MAIN
SA	SANITATION	EXISTING SANITATION
...	...	...

- NOTES APPLICABLE TO ALL DRAWINGS:
1. ALL LOCATIONS AND SIZES OF EXISTING EQUIPMENT, DIMENSIONS AND PIPES ARE APPROXIMATE. CONTRACTOR SHALL VERIFY EXISTING CONDITIONS AT SITE AND ADJUST TO SUIT.
  2. ALL EQUIPMENT AND PIPING TO BE REMOVED SHALL HAVE ALL PIPES REMOVED. ALL SUCH PIPES SHALL BE CAPPED ABOVE CEILING, BELOW FLOOR OR IN WALL.
  3. SEE M-10 FOR ADD'L WORK.
  4. RADIATORS COMPLETE ON M-8 & M-7 ARE BY THE CONTRACTOR.
  5. SEE STAGE ON DWG M-10.
  6. IN ALL W-RAY ROOMS PROVIDE LEAD SHIELD BEHIND PIPE PENETRATION THRU WALL. SHIELD MOUNTED AT LEAST 3\"/>

WALKER • KALONIZES • KLINGERMAN  
 ARCHITECTS  
 488 SOUTH SAN VICENTE BLVD., LOS ANGELES, CALIFORNIA  
 OL. 3-9380

ANTIOLOPE VALLEY HOSPITAL  
 FOR THE ANTILOPE VALLEY HOSPITAL DISTRICT  
 1800 WEST AVENUE J, LANCASTER, CALIFORNIA

MECHANICAL ENGINEER  
 CERTIFICATE NO. M-4155