

PUENTE BLDG. DIST. NO. 2

PROFILE ALIGNMENT AND GRADE OF P.C. 5797  
 SANITARY SEWERS PAGE 1  
 TO BE CONSTRUCTED IN J.N. 0355.33

TRACT NO. 26176

PRIVATE CONTRACT NO. 5797

W.S. 37

1 SHEET : 2 PAGES

SCALE: VERT. 1" = 4'

HORIZ. 1" = 40' FEBRUARY, 1961

PREPARED IN THE OFFICES OF

ROSENTHAL ENGINEERING COMPANY

By: *Arthur J. Rosenthal*  
 REG. C. E. NO. 8825

FOR LEGEND SEE PLAN NO. S-A-64

NOTE:  
 GRADES TO WHICH THIS IMPROVEMENT IS TO BE CONSTRUCTED ARE SHOWN ON PLANS AND PROFILES. GRADE POINTS FOR TOP OF CURBS, CENTER LINES OF STREETS, OR CENTER LINE OF ALLEYS ARE SHOWN BY CIRCLES ON PROFILES. AT ALL POINTS BETWEEN DESIGNATED POINTS THE GRADE SHALL BE ESTABLISHED SO AS TO CONFORM TO A STRAIGHT LINE DRAWN BETWEEN SAID DESIGNATED POINTS.  
 ELEVATIONS ARE IN FEET ABOVE U.S.C. & G.S. SEA LEVEL DATUM OF 1929.  
 THIS DRAWING AND THE DATA HEREON ARE HEREBY MADE A PART OF THE SPECIFICATIONS. WORK SHALL BE CONSTRUCTED ACCORDING TO SPECIFICATIONS ON FILE IN THE OFFICE OF THE COUNTY ENGINEER AND SHALL BE PROSECUTED ON IN THE PRESENCE OF THE COUNTY ENGINEER.  
 BEFORE WORK CAN BE STARTED, THE CONTRACTOR MUST OBTAIN A PERMIT TO EXCAVATE IN COUNTY STREETS FROM THE L.A. COUNTY ROAD DEPT., DISTRICT OFFICE NO. 7, AND MAKE A DEPOSIT WITH THE COUNTY ENGINEER, ROOM 310 COUNTY ENGINEER BLDG., 100 N. 2ND ST., L.A., SUFFICIENT TO COVER THE COST OF CONSTRUCTION INSPECTION AND RECORD PLANS.  
 APPROVAL OF THIS PLAN BY THE COUNTY OF LOS ANGELES DOES NOT CONSTITUTE A REPRESENTATION AS TO THE ACCURACY OF THE LOCATION OR OF THE EXISTENCE OR NON-EXISTENCE OF ANY UNDERGROUND UTILITY PIPE, OR STRUCTURE WITHIN THE LIMITS OF THIS PROJECT. THIS NOTE APPLIES TO ALL PAGES.  
 IF WORK IS TO BE DONE IN A STATE HIGHWAY, A PERMIT MUST BE OBTAINED FROM THE STATE OF CALIFORNIA, DIVISION OF HIGHWAYS, 120 SOUTH SPRING STREET.

COUNTY OF LOS ANGELES, CALIFORNIA

APPROVED, JOHN A. LAMIE, COUNTY ENGINEER APPROVED, C. R. COMPTON, CHIEF ENGINEER

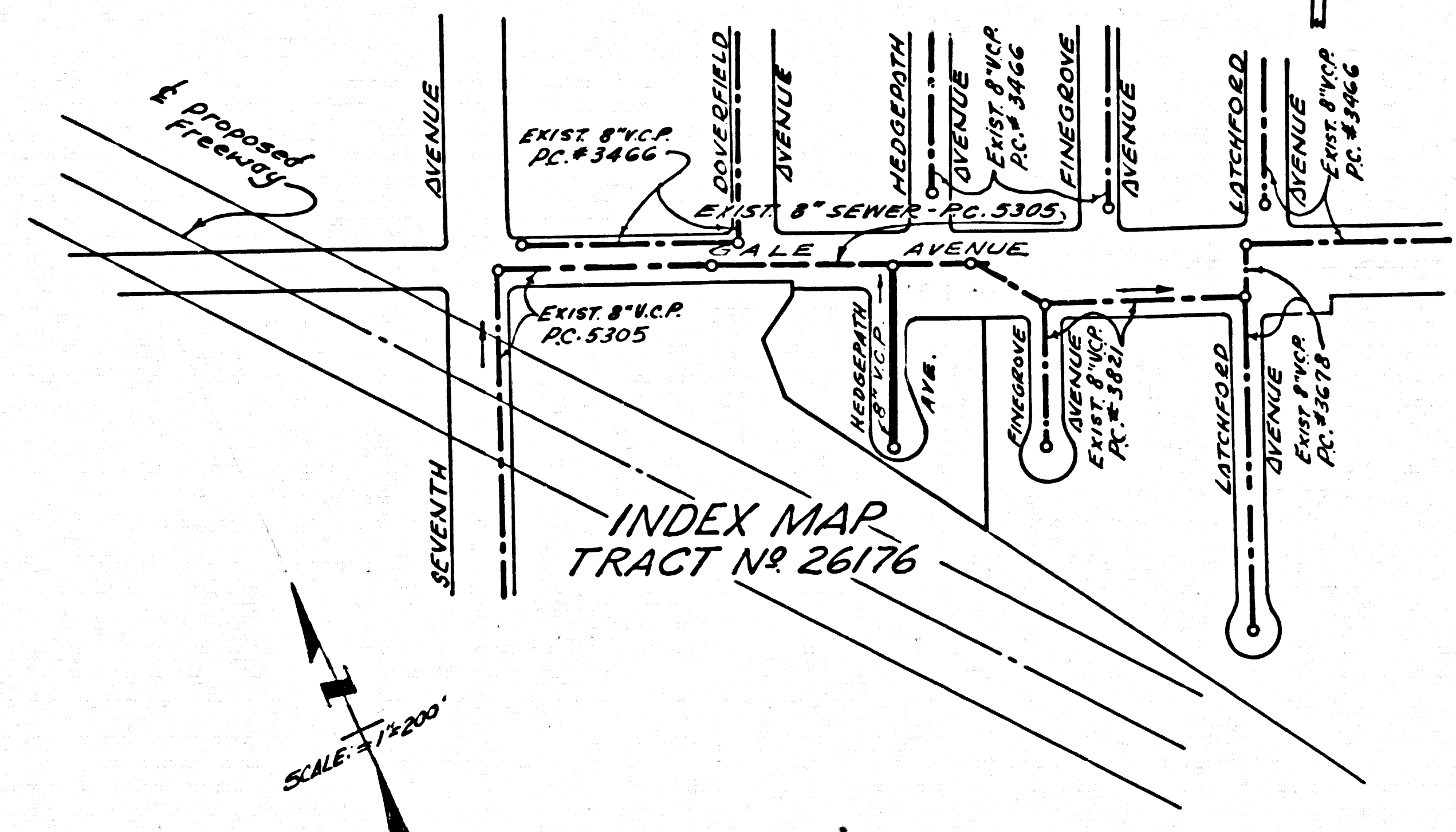
By: *C. E. Compton* SANITATION ENGINEER By: *C. R. Compton* OFFICE ENGINEER

CHECKED BY: *Elvinda* 2-10-61

OFFICE OF COUNTY ENGINEER, REG. C. E. NO. 9454

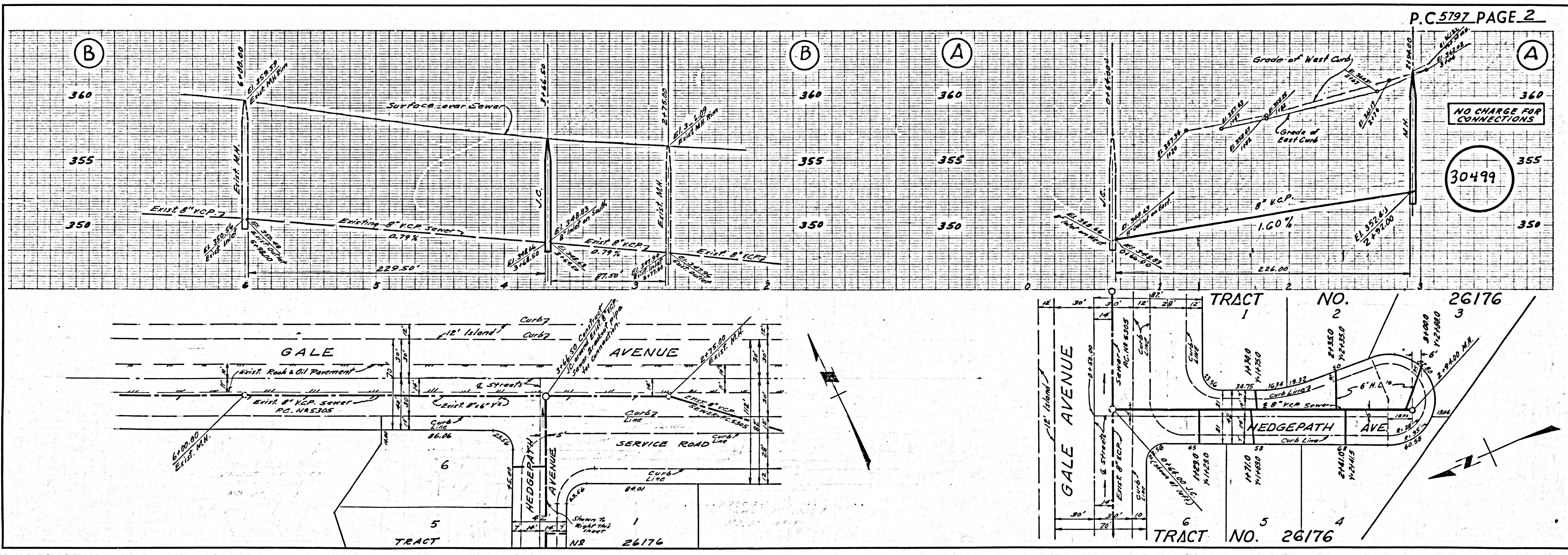
SUBMITTED: *W. C. Reinhardt* 3-10-61  
 SAN DIMAS REGIONAL ENGINEER

BENCH MARK:  
 S.G. 1592  
 L.&T. near N.W. Cor. of Conc. Drive to house No. 14606 Palm Avenue at S.E. Cor. 7th Avenue 100' E. and 27' S. of centerline intersection.  
 Covina Quad. Elev. 400.086



NO CHARGE FOR CONNECTIONS  
 7-29-61  
 3-10-61

NO CONNECTIONS FOR THE DISPOSAL OF INDUSTRIAL WASTES SHALL BE MADE TO SEWERS SHOWN ON THESE DRAWINGS WITHOUT WRITTEN PERMISSION FROM THE CHIEF ENGINEER AND GENERAL MANAGER OF THE COUNTY SANITATION DISTRICTS.



P.C. 5797 PAGE 2

NO CHARGE FOR CONNECTIONS  
 30499

