

TEMPLE CITY BLDG. DIST. NO. 5

PROFILE ALIGNMENT AND GRADE OF P.C. 5800
SANITARY SEWERS PAGE 1

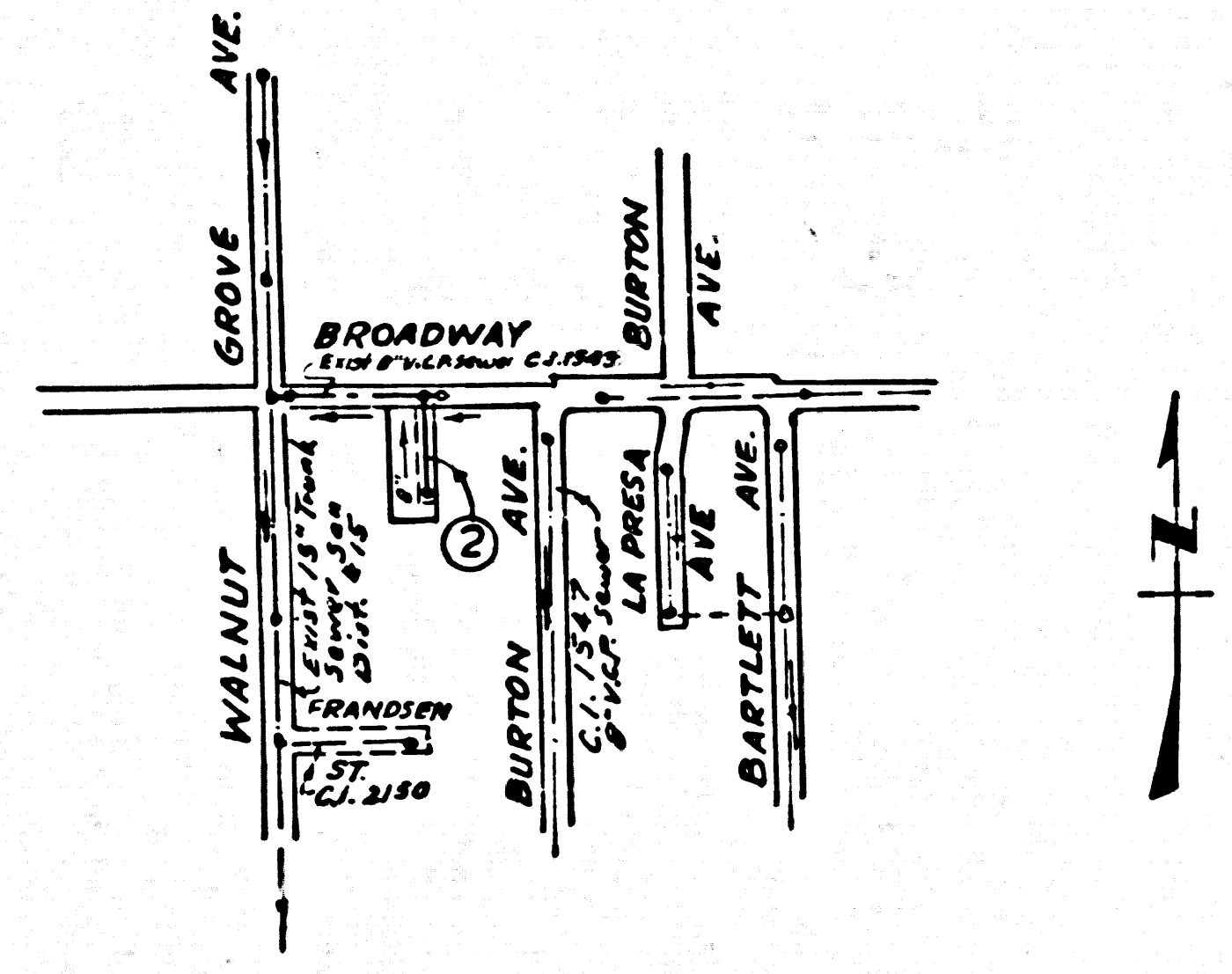
TO BE CONSTRUCTED IN
SANITARY SEWER EASEMENT
SOUTH OF BROADWAY
PRIVATE CONTRACT NO. 5800

W.S. 44
1 SHEETS; 2 PAGES
SCALE: VERT. 1" = 4'
HORIZ. 1" = 40' MARCH 1961
PREPARED IN THE OFFICES OF
TREADWELL ENGINEERING CORPORATION
By: *W. J. ...* REG. C. E. NO. 410
FOR LEGEND SEE PLAN NO. S-A-64

30490

BM. S.G. 678 ELEV. 402.364
BURTON AVE. BROADWAY
1/2 B.N. in S.E. conc foundation to power transmission tower # 977 Sout. Mesa 245' W. of Burton Ave to the S 1/4 15' N. of Broadway.
ARCADIA QUAD. ADJ. 1955

- NOTES:
1. PROVIDE STAKES ON THE PROPERTY LINE OR PROPERTY LINES PRODUCED AT RIGHT ANGLES TO THE SPW/ER LINE AT THE CENTER LINE OF EACH MANHOLE.
 2. NO REPRESENTATIVE OF THE COUNTY ENGINEER WILL SURVEY OR LAY OUT ANY PORTION OF THE WORK.
 3. THE OWNER OR HIS AUTHORIZED REPRESENTATIVE SHALL FURNISH THE COUNTY ENGINEER WITH GRADE SHEETS AND STATIONING FOR ALL HOUSE LATERALS AND Y BRANCHES AND SHALL PROVIDE STAKES FOR THEM AT THEIR PROPER LOCATIONS WITH STATIONING PLAINLY MARKED. ANY CHANGE IN LOCATION SHALL BE REQUESTED IN WRITING BY THE OWNER OR HIS REPRESENTATIVE.
 4. THE PRIVATE ENGINEER SHALL FURNISH THE LEGIBLE ORIGINAL SETBACK AT THE PROPERTY LINE BELOW THE TOP OF CURB FOR APPROX FOUR FEET HOUSE LATERAL ON THE GRABER STREET.
 5. NO REVISIONS SHALL BE MADE IN THESE PLANS WITHOUT THE APPROVAL OF THE COUNTY ENGINEER.
 6. USE STANDARD MANHOLE FRAMES AND COVERS, S-117 EXCEPT AS NOTED.
 7. USE STANDARD STRENGTH PIPE EXCEPT AS NOTED.
 8. USE CEMENT MORTAR OR "WEDGE-LOCK" OR "SPED-SEAL" FOR ALL V.C.P. JOINTS PER SPECS. SECS. 34 & 44.
 9. RESURFACE ALL TRENCH WITHIN PAVED AREA TO MEET L.A. COUNTY ROAD DEPT. OR CALIF. STATE HIGHWAY REQUIREMENTS IN ACCORDANCE WITH PERMITS.
 10. ENCASE FOUR FEET OF SEWER AT POINTS OF INTERFERENCE WITH POLES, CASE III, S-117Z.
 11. HOUSE LATERALS TO BE CONSTRUCTED WITH INVERTS AT PROPERTY LINE EXCEPT BELOW CURB WHERE PERMITTED AS NOTED.
 12. ALL STRUCTURES SHALL BE BRICK SEWER STRUCTURES, S-104, EXCEPT AS NOTED.
 13. FOR ALLOWABLE LEAKAGE TEST USE FORMULA NO. 1, SPECS. SEC. 54.
 14. MANHOLE TOPS IN UNIMPROVED RIGHTS-OF-WAY TO BE LEVEL WITH FINISHED GRADE.
 15. THE CONTRACTOR SHALL NOTIFY THE CONSTRUCTION DIVISION BY TELEPHONE, MADISON 9-4747, AT LEAST TWENTY-FOUR HOURS BEFORE STARTING ANY WORK UNDER THIS CONTRACT.
 16. STANDARD SPECIFICATIONS DATED OCTOBER 10, 1960 SHALL BE USED IN THE CONSTRUCTION OF THIS PROJECT.



INDEX MAP
SCALE 1" = 500'
P.C. 5800

NO CHARGE FOR CONNECTIONS
Ch. Albertson

NO CONNECTIONS FOR THE DISPOSAL OF INDUSTRIAL WASTES SHALL BE MADE TO SEWERS SHOWN ON THESE DRAWINGS WITHOUT WRITTEN PERMISSION FROM THE CHIEF ENGINEER AND GENERAL MANAGER OF THE COUNTY SANITATION DISTRICTS.

NOTE:
GRADES TO WHICH THIS IMPROVEMENT IS TO BE CONSTRUCTED ARE SHOWN ON PLANS AND PROFILES. GRADE POINTS FOR TOP OF CURBS, CENTER LINE OF STREETS OR CENTER LINE OF ALLEYS ARE SHOWN BY CIRCLES ON PROFILES. AT ALL POINTS BETWEEN DESIGNATED POINTS THE GRADE SHALL BE ESTABLISHED SO AS TO CONFORM TO A STRAIGHT LINE DRAWN BETWEEN SAID DESIGNATED POINTS.
ELEVATIONS ARE IN FEET ABOVE U.S.C. & G.S. SEA LEVEL DATUM OF 1929.
THIS DRAWING AND THE DATA HEREON ARE HEREBY MADE A PART OF THE SPECIFICATIONS.
WORK SHALL BE CONSTRUCTED ACCORDING TO SPECIFICATIONS ON FILE IN THE OFFICE OF THE COUNTY ENGINEER AND SHALL BE PROSECUTED ONLY IN THE PRESENCE OF THE COUNTY ENGINEER.
BEFORE WORK CAN BE STARTED THE CONTRACTOR MUST OBTAIN A PERMIT TO EXCAVATE IN COUNTY STREETS FROM THE L. A. COUNTY ROAD DEPT., DISTRICT OFFICE NO. 1, AND PAY A FEE TO THE COUNTY ENGINEER ROOM 310, 108 WEST SECOND STREET SUFFICIENT TO COVER THE COST OF CONSTRUCTION INSPECTION AND RECORD PLANS.
APPROVAL OF THIS PLAN BY THE COUNTY OF LOS ANGELES DOES NOT CONSTITUTE A REPRESENTATION AS TO THE ACCURACY OF THE LOCATION OF OR THE EXISTENCE OR NON-EXISTENCE OF ANY UNDERGROUND UTILITY PIPE, OR STRUCTURE WITHIN THE LIMITS OF THIS PROJECT. THIS NOTE APPLIES TO ALL PAGES.
IF WORK IS TO BE DONE IN A STATE HIGHWAY, A PERMIT MUST BE OBTAINED FROM THE STATE OF CALIFORNIA, DIVISION OF HIGHWAYS, 128 SOUTH SPRING STREET.

COUNTY OF LOS ANGELES, CALIFORNIA
APPROVED, JOHN A. LAMBE, COUNTY ENGINEER APPROVED, C. R. COMPTON, CHIEF ENGINEER
BY: *C. E. Brandy* 3537 SANITATION ENGINEER BY: *A. Williams* CO. SAN. DIST. NO. 11 OFFICE ENGINEER
CHECKED BY: *J. K. Oida* 2-9-61 OFFICE OF COUNTY ENGINEER, REG. C. E. NO. 3496
SUBMITTED *N. J. Brander* SAN GABRIEL VALLEY REGIONAL ENGINEER

P.C. 5800 PAGE 2

NO CHARGE FOR CONNECTIONS

30491

