

BENCH MARK
 Anolon Blvd. and Dept. of Water & Power Tower
 No. 48 14.4' West of the Center of Tower Set in
 Well Protected By Cast Iron Cover Marked County
 Surveyor Monument a Standard C.S. Monument
 Stamped B.M. 23-6 1952 RE 63

DOUBLE SCALE
LENNOX BLDG. DIST. NO. 7

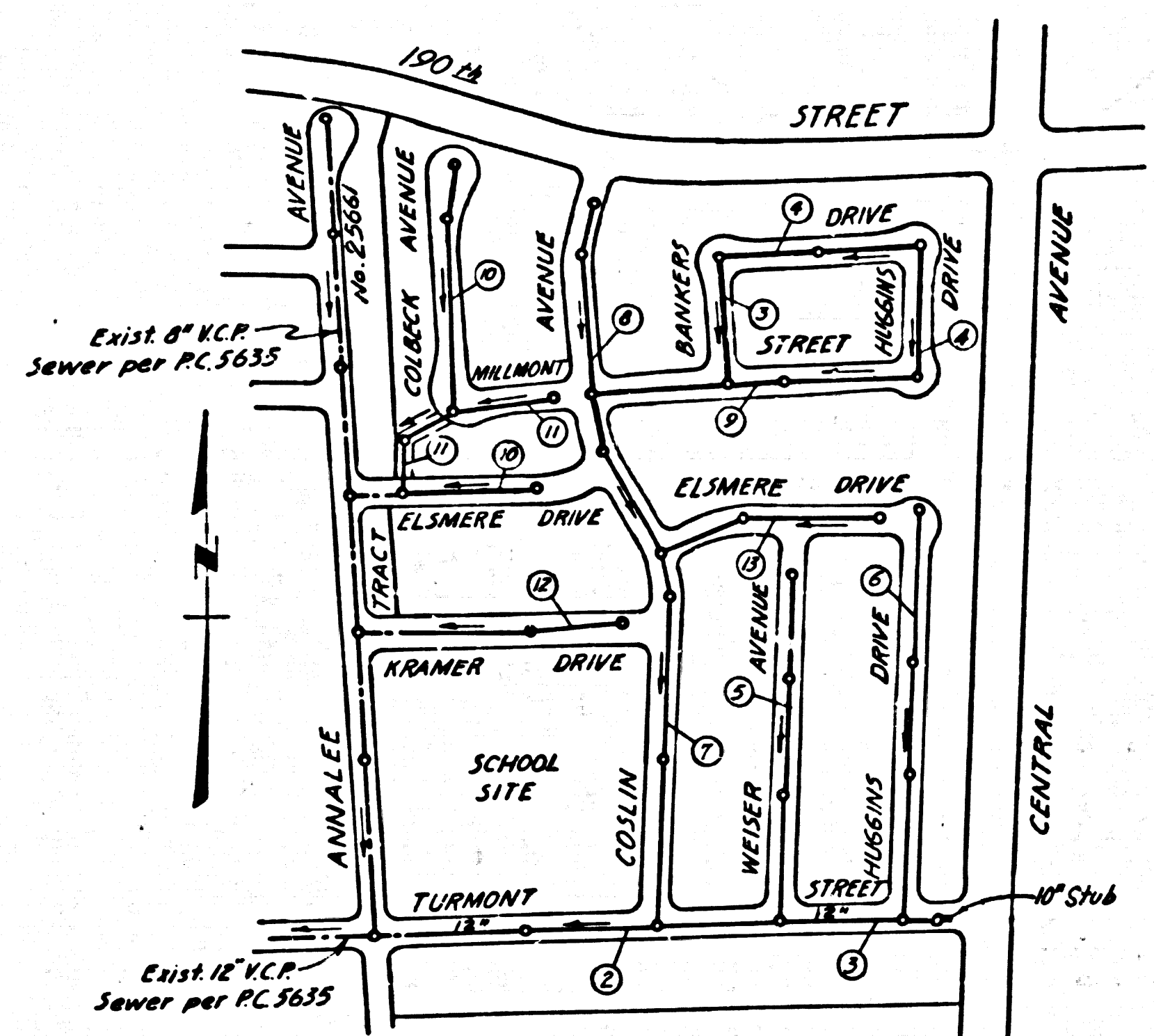
PROFILE ALIGNMENT AND GRADE OF **P.C. 5802**
SANITARY SEWERS PAGE 1
 TO BE CONSTRUCTED IN J.N. 0355.37

TRACT No. 25515
PRIVATE CONTRACT NO. 5802

W.S. 26
 7 SHEETS; 13 PAGES
 SCALE: VERT. 1" = 4' HORIZ. 1" = 40'
 FEBRUARY, 1961
 PREPARED IN THE OFFICES OF
ENGINEERING SERVICE CORPORATION

30916

By: *E.P. Ryan*
 REG. C.E. NO. 3622
 FOR LEGEND SEE PLAN NO. S-A-64



INDEX MAP
TRACT No. 25515
 Scale 1"=400'
P.C. 5802

NO CHARGE FOR CONNECTIONS
Letter 3-23-61

NO CONNECTIONS FOR THE DISPOSAL OF INDUSTRIAL WASTES SHALL BE MADE TO SEWERS SHOWN ON THESE DRAWINGS WITHOUT WRITTEN PERMISSION FROM THE CHIEF ENGINEER AND GENERAL MANAGER OF THE COUNTY SANITATION DISTRICTS.

- NOTES**
- PROVIDE STAKES ON THE PROPERTY LINE OR PROPERTY LINES PRODUCED AT RIGHT ANGLES TO THE SEWER LINE AT THE CENTER LINE OF EACH MANHOLE.
 - NO REPRESENTATIVE OF THE COUNTY ENGINEER WILL SURVEY OR LAYOUT ANY PORTION OF THE WORK.
 - THE OWNER OR HIS AUTHORIZED REPRESENTATIVE SHALL FURNISH THE COUNTY ENGINEER WITH GRADE SHEETS AND STATION FOR ALL HOUSE LATERALS AND Y BRANCHES AND SHALL PROVIDE STAKES FOR THEM AT THEIR PROPER LOCATIONS WITH STATIONING PLAINLY MARKED. ANY CHANGE IN LOCATION SHALL BE REQUESTED IN WRITING BY THE OWNER OR HIS REPRESENTATIVE.
 - NO REVISIONS SHALL BE MADE IN THESE PLANS WITHOUT THE APPROVAL OF THE COUNTY ENGINEER.
 - USE STANDARD MANHOLE FRAMES AND COVERS, S-A-117.
 - USE STANDARD STRENGTH PIPE EXCEPT AS NOTED.
 - USE CEMENT MORTAR OR "WEDGE-LOCK" OR "SPEED-SEAL" FOR ALL V.C.P. JOINTS PER S.P.C.'S, SEC. 34 & 40.
 - RESURFACE ALL TRENCH WITHIN PAVED AREA TO MEET L. A. COUNTY ROAD DEPT., OR CALIF. STATE HIGHWAY DEPT. REQUIREMENTS IN ACCORDANCE WITH PERMITS.
 - ENCASE FOUR FEET OF SEWER AT POINTS OF INTERFERENCE WITH POLES, CASE III, S-B-172.
 - HOUSE LATERALS TO BE CONSTRUCTED WITH INVERTS AT PROPERTY LINE 6 FEET BELOW CURB GRADE.
 - ALL STRUCTURES SHALL BE BRICK SEWER STRUCTURES, S-A-104.
 - FOR ALLOWABLE LEAKAGE TEST USE FORMULA NO. 1, S.P.C.'S, SEC. 54.
 - MANHOLE TOPS IN UNIMPROVED RIGHTS-OF-WAY TO BE 4" ABOVE FINISHED GRADE.
 - THE PRIVATE ENGINEER IS TO FURNISH THE HOUSE LATERAL DEPTH AT THE PROPERTY LINE BELOW THE TOP OF CURVE ELEVATION FOR EACH HOUSE LATERAL ON THE GRADE SHEET.
 - THE CONTRACTOR SHALL NOTIFY THE CONSTRUCTION AND STORM DRAIN DIVISION BY TELEPHONE, MADISON 9-4747, EXT. 81551 AT LEAST 24 HOURS BEFORE STARTING ANY WORK UNDER THIS CONTRACT.
 - SPECIFICATIONS DATED OCT. 10, 1960 APPLY IN THE CONSTRUCTION OF THIS PROJECT.

NOTE:
 Lots 1-11 Served by P.C. 5635.

| | | | | | |
|--|----------|-----------|---------------------------|-------|-------|
| ENGINEERING SERVICE CORPORATION 1127 W. WASHINGTON BLVD. LOS ANGELES 15, CALIF. RI. 9-7281 | | | | | |
| REVISIONS | | | TRACED BY: _____ | | |
| | | | DES'G'D BY: <i>C.M.R.</i> | | |
| | | | CK'D BY: _____ | | |
| | | | SUBMITTED: _____ | | |
| SUB STRUCTURES OK'D | | | | | |
| W. O. NO. | DWG. NO. | DATE | SCALE | L. B. | F. B. |
| 5950-122 | | Feb. 1961 | As Shown | None | |

NOTES

GRADES TO WHICH THIS IMPROVEMENT IS TO BE CONSTRUCTED ARE SHOWN ON PLANS AND PROFILES. GRADE POINTS FOR TOP OF CURBS, CENTER LINE OF STREETS, OR CENTER LINE OF ALLEYS ARE SHOWN BY CIRCLES ON PROFILES. AT ALL POINTS BETWEEN DESIGNATED POINTS THE GRADE SHALL BE ESTABLISHED SO AS TO CONFORM TO A STRAIGHT LINE DRAWN BETWEEN SAID DESIGNATED POINTS.

ELEVATIONS ARE IN FEET ABOVE U.S.C. & G.S. SEA LEVEL DATUM OF 1929.

THIS DRAWING AND THE DATA HEREON ARE HEREBY MADE A PART OF THE SPECIFICATIONS.

WORK SHALL BE CONSTRUCTED ACCORDING TO SPECIFICATIONS ON FILE IN THE OFFICE OF THE COUNTY ENGINEER AND SHALL BE PROSECUTED ONLY IN THE PRESENCE OF THE COUNTY ENGINEER.

BEFORE WORK CAN BE STARTED, THE CONTRACTOR MUST OBTAIN A PERMIT TO EXCAVATE IN COUNTY STREETS FROM THE L. A. COUNTY ROAD DEPT., DIST. OFFICE NO. 3 AND PAY FEE TO THE COUNTY ENGINEER, ROOM 310 COUNTY ENGINEER BUILDING JOB NO. 5802 SUFFICIENT TO COVER THE COST OF CONSTRUCTION INSPECTION AND RECORD PLANS.

APPROVAL OF THIS PLAN BY THE COUNTY OF LOS ANGELES DOES NOT CONSTITUTE A REPRESENTATION AS TO THE ACCURACY OF THE LOCATION OF OR THE EXISTENCE OR NON-EXISTENCE OF ANY UNDERGROUND UTILITY PIPE, OR STRUCTURE WITHIN THE LIMITS OF THIS PROJECT. THIS NOTE APPLIES TO ALL PAGES.

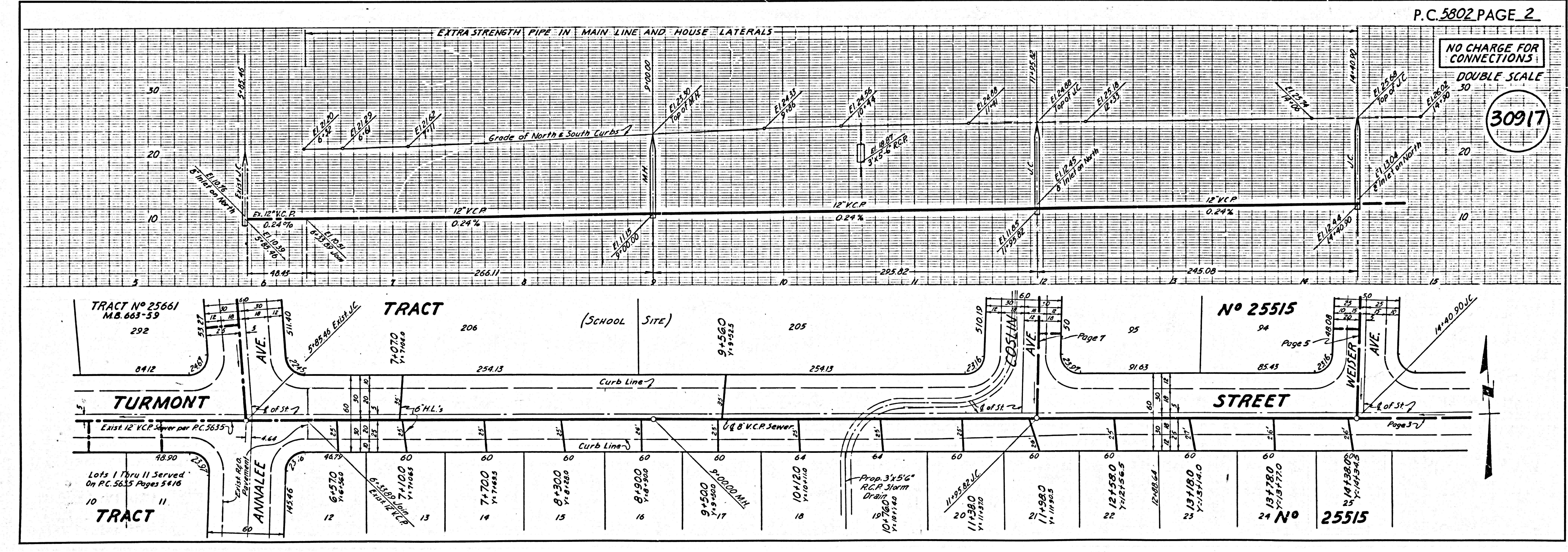
IF WORK IS TO BE DONE IN A STATE HIGHWAY, A PERMIT MUST BE OBTAINED FROM THE STATE OF CALIFORNIA, DIVISION OF HIGHWAYS, 120 SOUTH SPRING STREET.

COUNTY OF LOS ANGELES, CALIFORNIA

APPROVED, JOHN A. LAMBIE, COUNTY ENGINEER
 APPROVED, C.R. COMPTON, CHIEF ENGINEER
 DIST. SANITATION ENGINEER
 OFFICE ENGINEER

BY: *E.P. Ryan* 3-14-61
 CHECKED BY: *J.V. Dinda* 3-14-61
 OFFICE OF COUNTY ENGINEER, REG. C. E. NO. 3406

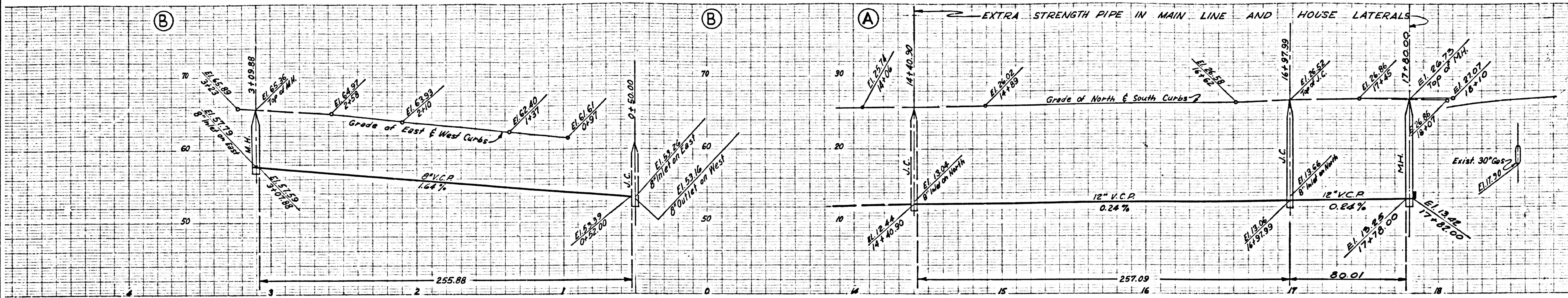
Submitted *Jack C. Lansing* 3-24-61
 Palms Verdes - Centinela Valley Regional Engineer



NO CHARGE FOR CONNECTIONS

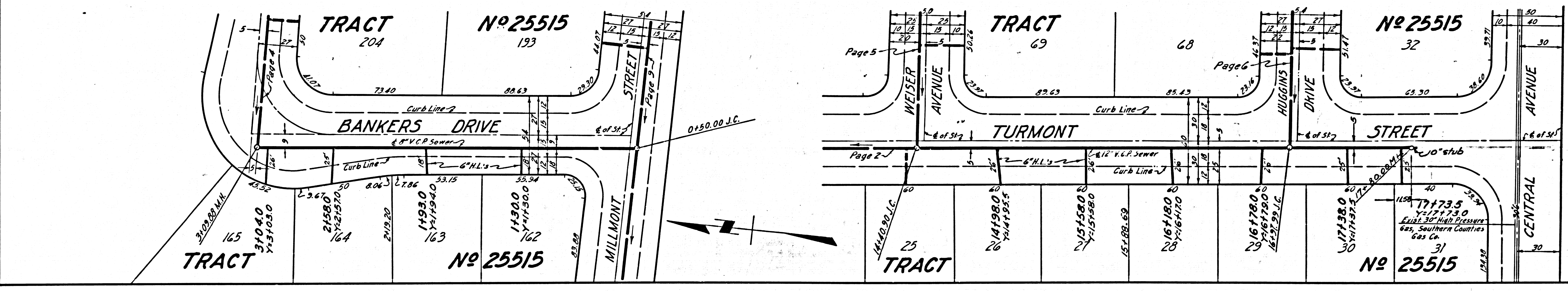
DOUBLE SCALE

30917

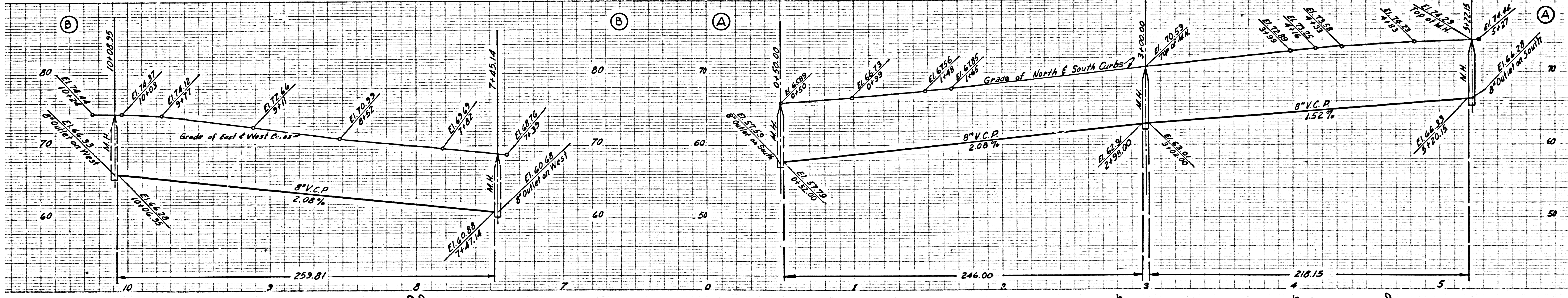


NO CHARGE FOR CONNECTIONS DOUBLE SCALE

30918

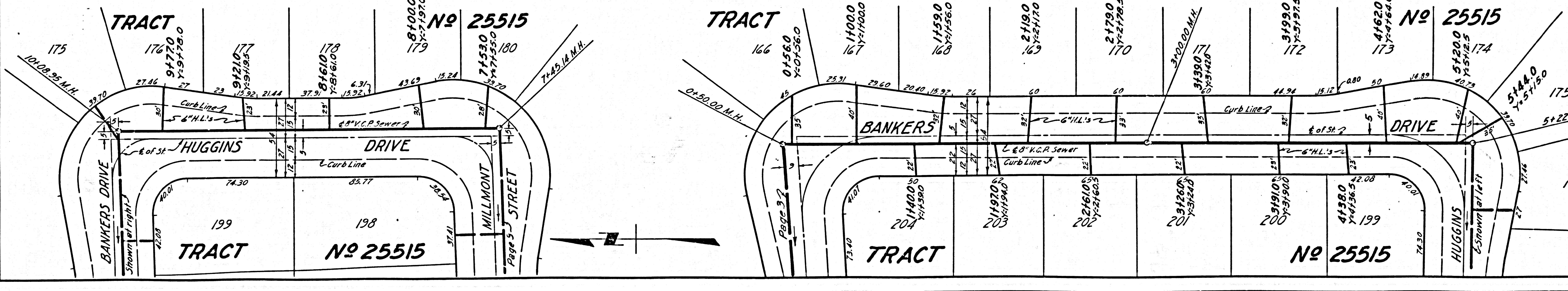


REVISION: DELETED 12" V.C.P. SEWER FROM STA. 1718+00 TO STA. 1718+00.00
JACK C. ANDERSON
C.E. 30271



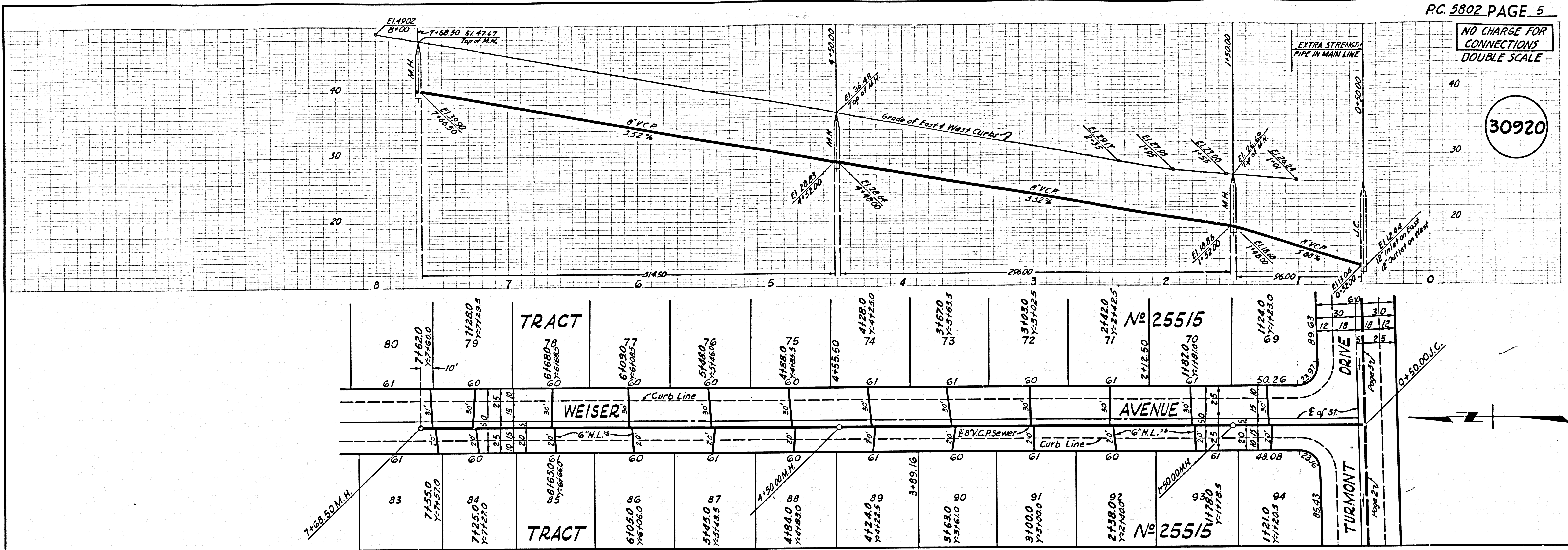
NO CHARGE FOR CONNECTIONS DOUBLE SCALE

30919



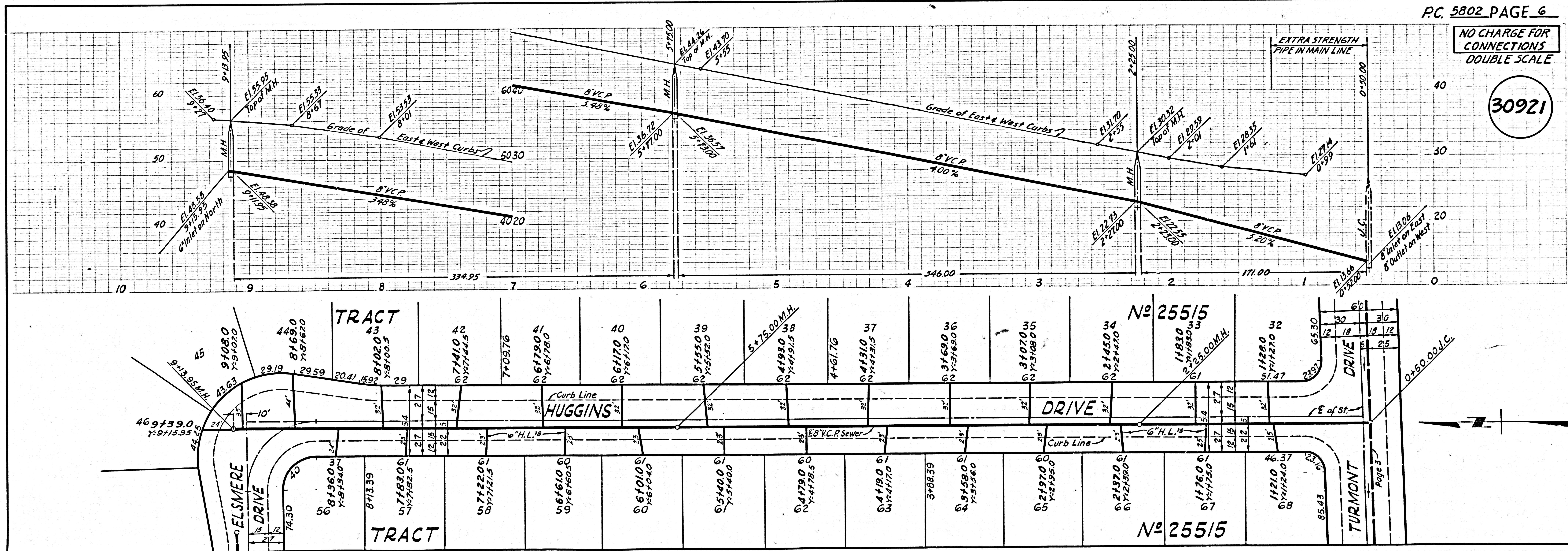
NO CHARGE FOR CONNECTIONS
DOUBLE SCALE

30920

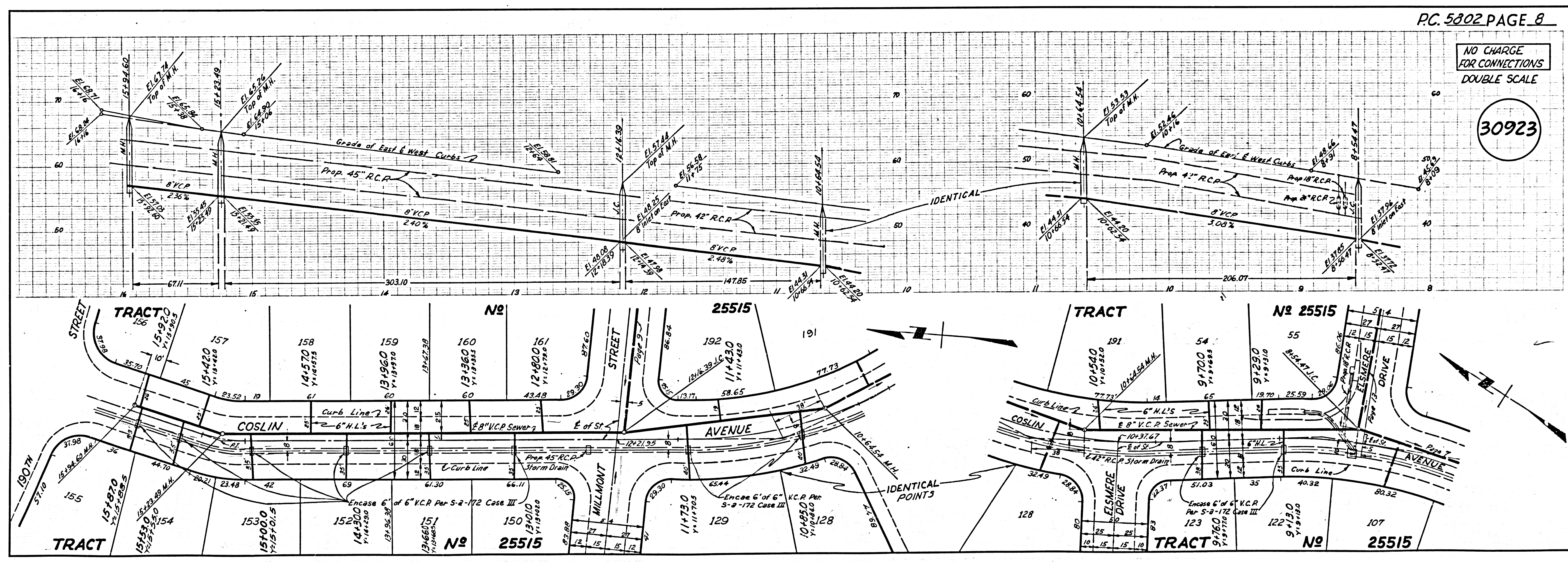
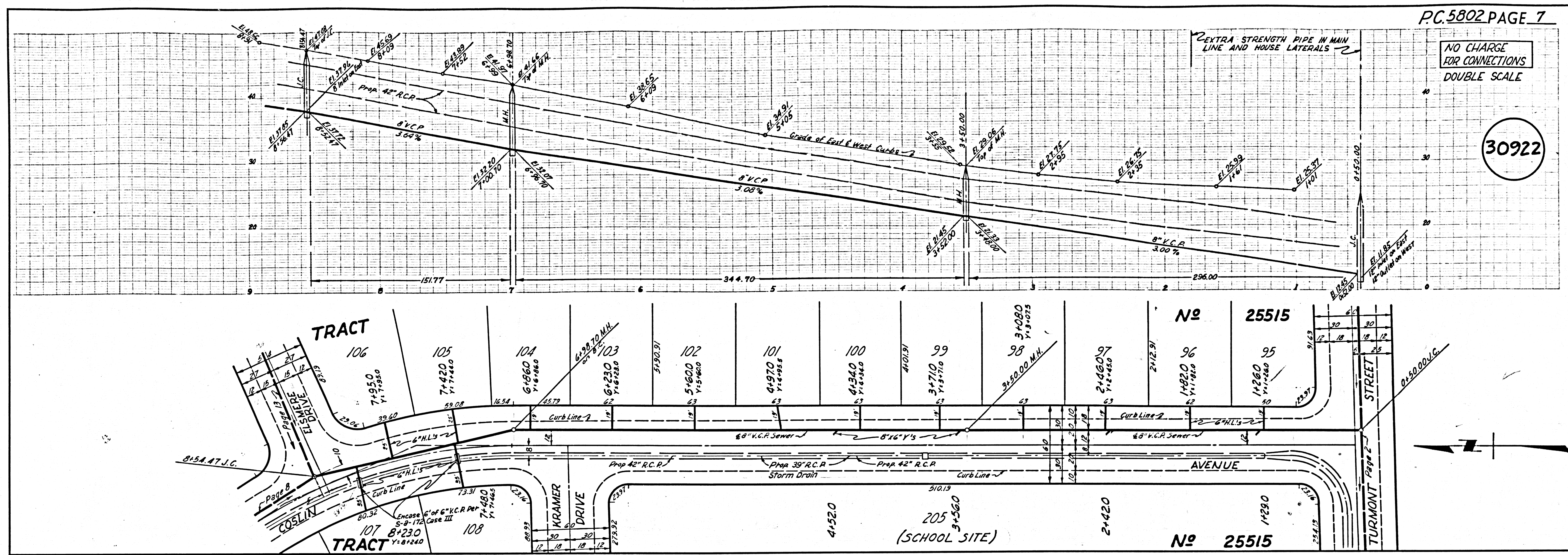


NO CHARGE FOR CONNECTIONS
DOUBLE SCALE

30921

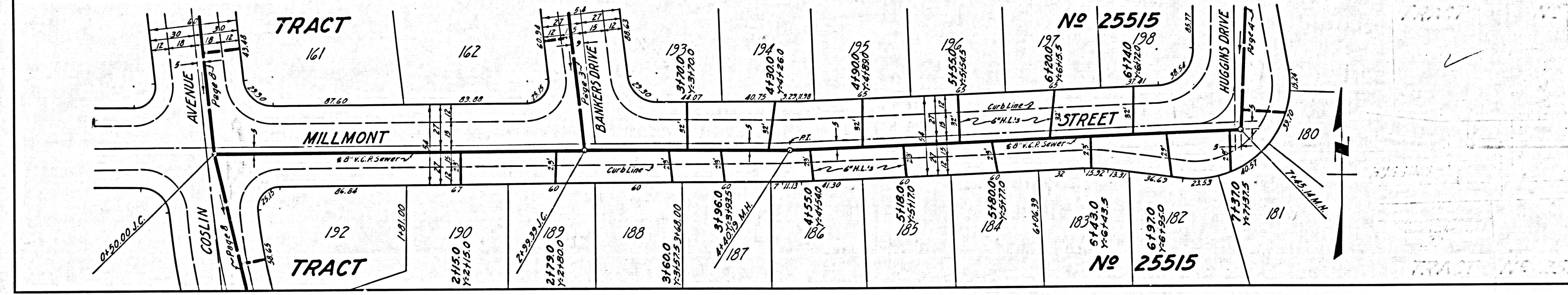
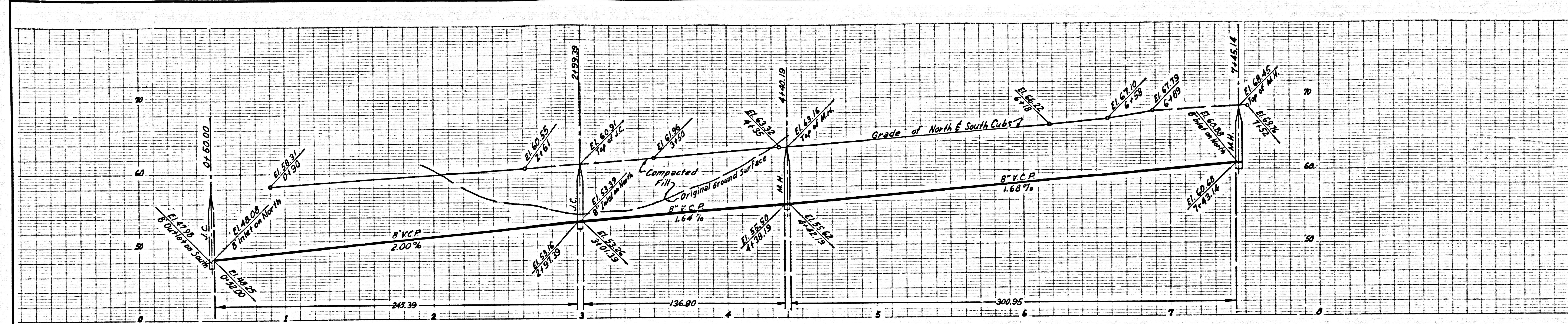


4
P.C. 5802
TRACT NO 5812



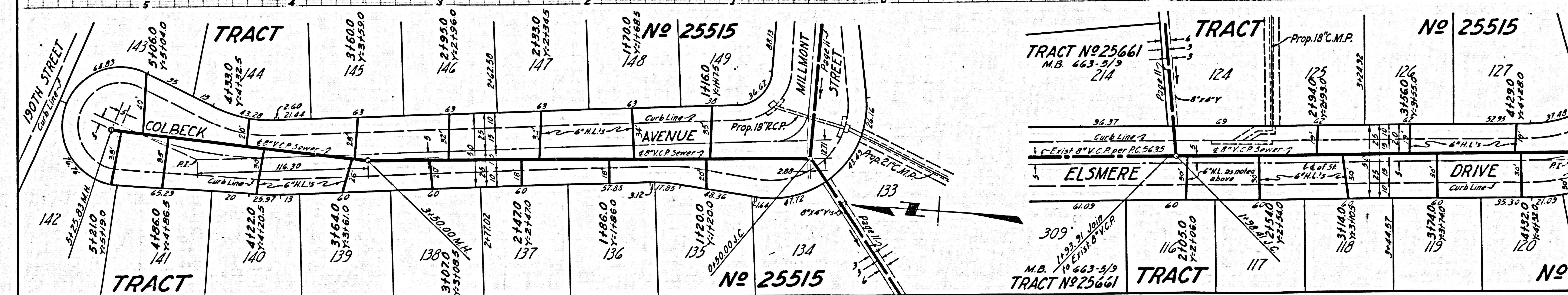
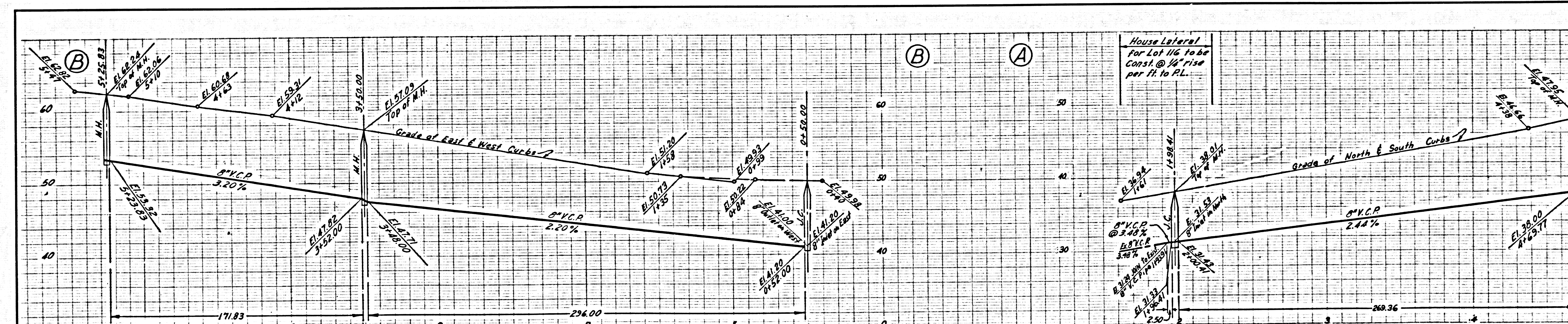
NO CHARGE FOR CONNECTIONS
DOUBLE SCALE

30924



NO CHARGE FOR CONNECTIONS
DOUBLE SCALE

30925

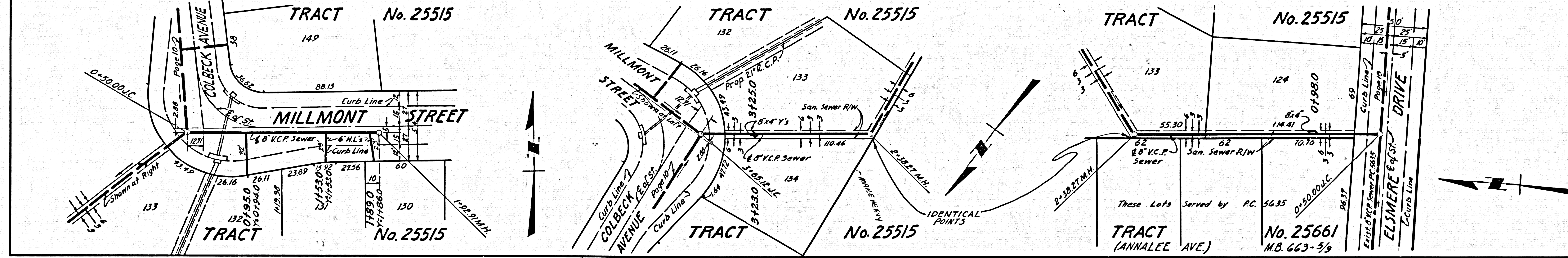
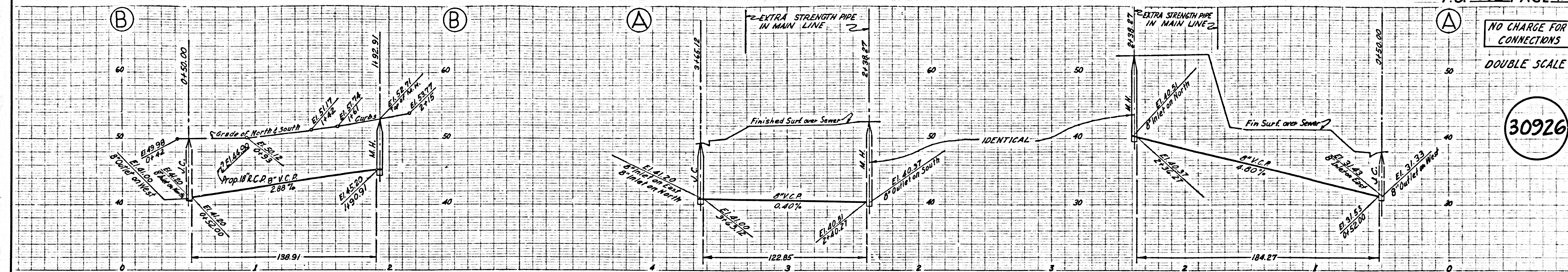


PC. 2805
TRACT No 5212

NO CHARGE FOR CONNECTIONS

DOUBLE SCALE

30926



NO CHARGE FOR CONNECTIONS

DOUBLE SCALE

30927

