

TEMPLE CITY BLDG. DIST. NO. 5

PROFILE ALIGNMENT AND GRADE OF P.C. 5804
 SANITARY SEWERS PAGE 1
 TO BE CONSTRUCTED IN J.N. 0355.38

RIGHT OF WAY NORTH OF DUARTE RD.

PRIVATE CONTRACT NO. 5804

W.S. 44

1 SHEET, 2 PAGES

SCALE: VERT. 1" = 4' HORIZ. 1" = 40'

APRIL 24, 1961

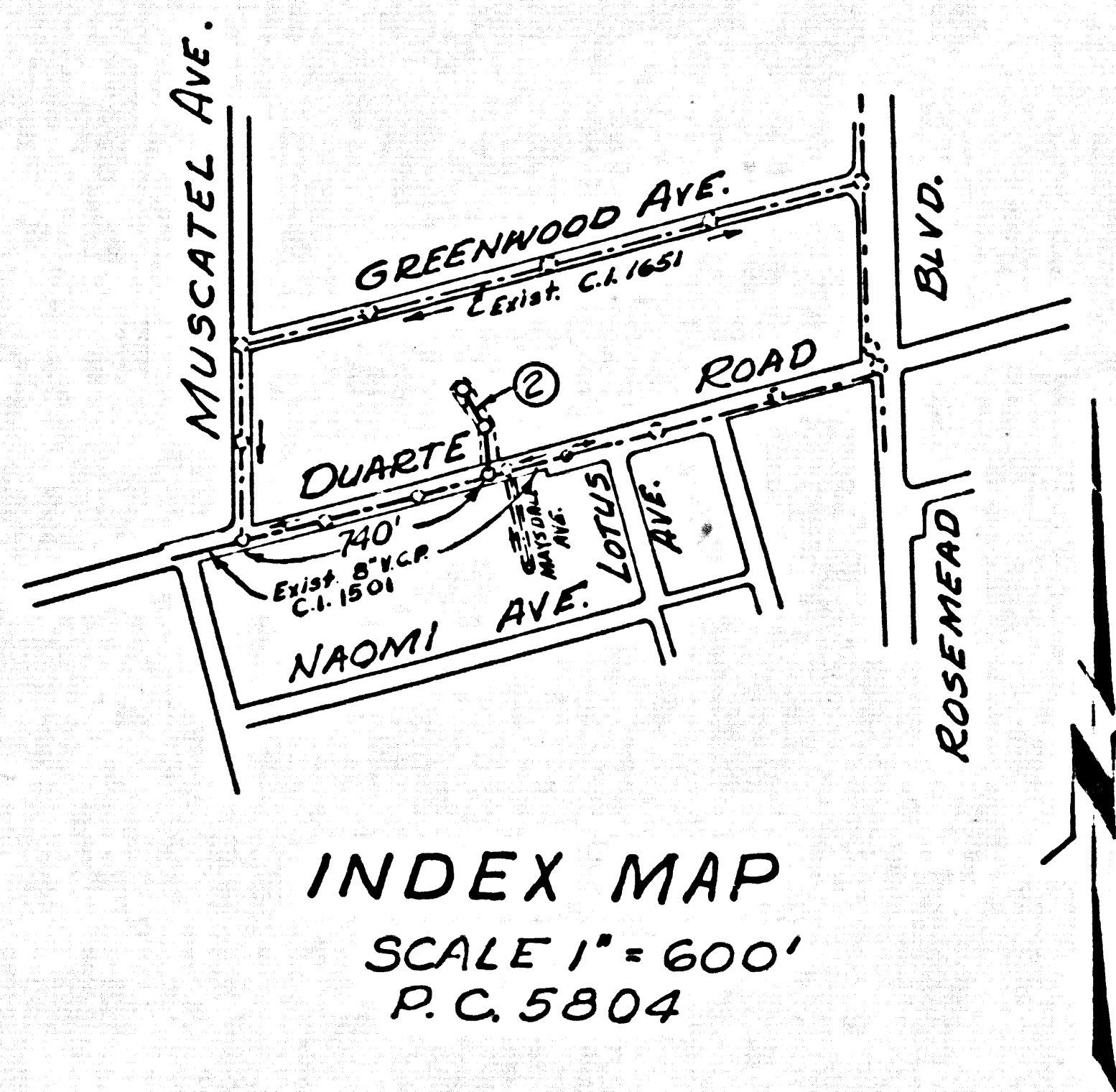
PREPARED IN THE OFFICES OF
 STRECKER ASSOCIATES

By: *John A. Ayrd*
 REG. C. E. NO. 8638

FOR LEGEND SEE PLAN NO. S-A-64

BENCH MARK: N^o T.E. 329 Elev. 511.468'
 C.S.F.B. 1488 P.198 - So. Side DUARTE RD. AT
 MUSCATEL AVE. - Boat Spk. IN N. END OF CONC.
 CURB TO HOUSE N^o 8712.

- NOTES:
- PROVIDE STAKES ON THE PROPERTY LINE OR PROPERTY LINES PRODUCED AT RIGHT ANGLES TO THE SEWER LINE AT THE CENTER LINE OF EACH MANHOLE.
 - NO REPRESENTATIVE OF THE COUNTY ENGINEER WILL SURVEY OR LAYOUT ANY PORTION OF THE WORK.
 - THE OWNER OR HIS AUTHORIZED REPRESENTATIVE SHALL FURNISH THE COUNTY ENGINEER WITH GRADE SHEETS AND STATIONING FOR ALL HOUSE LATERALS AND Y BRANCHES AND SHALL PROVIDE STAKES FOR THEM AT THEIR PROPER LOCATIONS WITH STATIONING PLAINLY MARKED. ANY CHANGE IN LOCATION SHALL BE REQUESTED IN WRITING BY THE OWNER OR HIS REPRESENTATIVE.
 - NO REVISIONS SHALL BE MADE IN THESE PLANS WITHOUT THE APPROVAL OF THE COUNTY ENGINEER.
 - USE STANDARD MANHOLE FRAMES AND COVERS, S-A-117.
 - USE STANDARD STRENGTH PIPE EXCEPT AS NOTED.
 - USE CEMENT MORTAR, "WEDGE LOCK" OR "SPEED SEAL" JOINTS FOR V.C.P. JOINTS, SPECS. 36 & 48.
 - RESURFACE ALL TRENCH WITHIN PAVED AREA TO MEET L. A. COUNTY ROAD DEPT. OR CALIF. STATE HIGHWAY DEPT. REQUIREMENTS IN ACCORDANCE WITH PERMITS.
 - ENCASE FOUR FEET OF SEWER AT POINTS OF INTERFERENCE WITH POLES, S-A-119.
 - HOUSE LATERALS TO BE CONSTRUCTED WITH INVERTS AT PROPERTY LINE .5 FEET BELOW GRADE OF 4% OF EASEMENT.
 - ALL STRUCTURES SHALL BE BRICK SEWER STRUCTURES, S-A-104.
 - FOR ALLOWABLE LEAKAGE TEST USE FORMULA NO. 1 SPECS. SEC. II.
 - MANHOLE TOPS IN IMPROVED RIGHTS-OF-WAY TO BE LEVEL WITH FINISHED GRADE.
 - STANDARD SPECIFICATIONS DATED OCTOBER 10, 1960 APPLY TO THE CONSTRUCTION OF THIS PROJECT.
 - THE CONTRACTOR SHALL NOTIFY THE CONSTRUCTION DIVISION BY TELEPHONE MADISON 9-4747 EXT. 31551 AT LEAST TWENTY-FOUR HOURS BEFORE STARTING ANY WORK UNDER THIS CONTRACT.



INDEX MAP
 SCALE 1" = 600'
 P.C. 5804

CONNECTION CHARGES
 AS INDICATED.
A.B. Johnston 5/1/61

NO CONNECTIONS FOR THE DISPOSAL OF INDUSTRIAL WASTES SHALL BE MADE TO SEWERS SHOWN ON THESE DRAWINGS WITHOUT WRITTEN PERMISSION FROM THE CHIEF ENGINEER AND GENERAL MANAGER OF THE COUNTY SANITATION DISTRICTS.

COUNTY OF LOS ANGELES, CALIFORNIA

APPROVED, JOHN A. LAMBIE, COUNTY ENGINEER

APPROVED, C.R. COMPTON, CHIEF ENGINEER
 CO. SAN. DIST. NO. 15

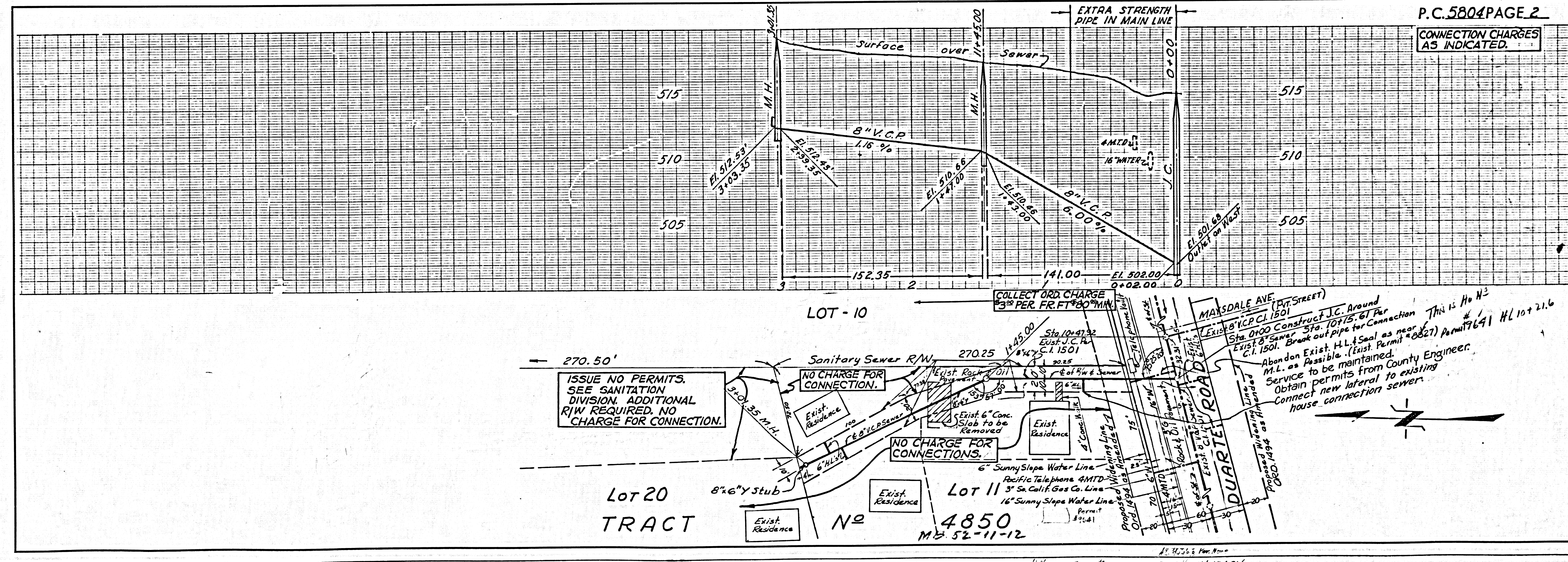
BY: *C.E. Priddy* SANITATION ENGINEER

BY: *J. R. ...* OFFICE ENGINEER

CHECKED BY: *S.K. ...*

OFFICE OF COUNTY ENGINEER, REG. C. E. NO. 2406

SUBMITTED BY: *N.P. Bravender*
 SAN GABRIEL VALLEY REGIONAL ENGINEER



P.C. 5804 PAGE 2
 CONNECTION CHARGES
 AS INDICATED.

ISSUE NO PERMITS.
 SEE SANITATION
 DIVISION. ADDITIONAL
 R/W REQUIRED. NO
 CHARGE FOR CONNECTION.

NO CHARGE FOR CONNECTIONS.

Abandon Exist. H.L. & Seal as near M.L. as Possible. (Exist. Permit # 0827) Permit # 19641 HL 10+21.6
 Service to be maintained. Obtain permits from County Engineer. Connect new lateral to existing house connection sewer.

PC 2804