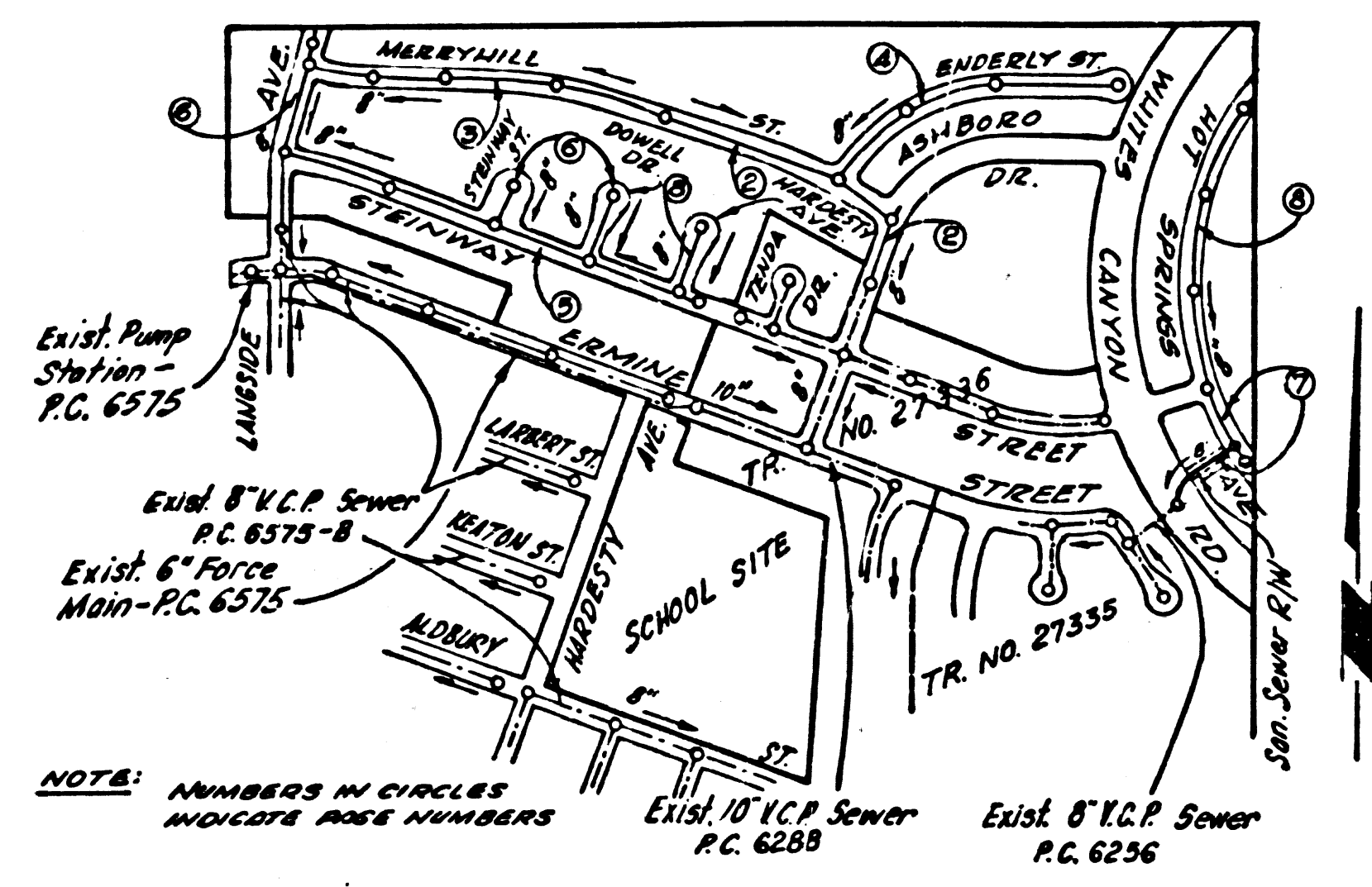


B.M. D-487-1955 ELEV. 1344.472
 Sta. 0+00.0 at S. Bunker Blvd. 501 ft. from north end of tunnel
 1.0 ft. from N.W. corner of Camp Plenny rd. at
 Soreddo Canyon Rd. at the N.W. corner of
 Plenny Rd. and a curve rd. leading to the S.S.
 Ranch Airport and rd. to a white witness post.
 QUAD. 19



INDEX MAP
TRACT NO. 26122
 P.C. 5808
 Scale: 1" = 600'

NOTE:
 Lots 153 thru 164 are served
 by sewers constructed under
 P.C. 6575-B in Ermine St. and
 Aldbury St.

NEWHALL BLDG. DIST. NO. 8.2

PROFILE ALIGNMENT AND GRADE OF P.C. 5808

SANITARY SEWERS PAGE 1

TO BE CONSTRUCTED IN

TRACT NO. 26122

PRIVATE CONTRACT NO. 5808

W.S. 62

4 SHEETS; 8 PAGES

SCALE: VERT. 1" = 8' SEPT., 1963

PREPARED IN THE OFFICES OF

MCINTIRE & QUIROS INC.

By: *J. Quiros*
 REG. C. E. NO. 8588

FOR LEGEND SEE PLAN NO. S-64

- NOTE:**
1. PROVIDE STAKES ON THE PROPERTY LINE OR PROPERTY LINES PRODUCED AT RIGHT ANGLES TO THE SEWER LINE AT THE CENTER LINE OF EACH MANHOLE.
 2. NO REPRESENTATIVE OF THE COUNTY ENGINEER WILL SURVEY OR LAY OUT ANY PORTION OF THE WORK.
 3. THE PRIVATE ENGINEER SHALL FURNISH THE COUNTY ENGINEER WITH GRADE SHEETS AND STATIONING FOR ALL HOUSE LATERALS AND BRANCHES AND SHALL PROVIDE STAKES FOR THEM AT THEIR PROPER LOCATIONS WITH STATIONING PLAINLY MARKED. ALL HOUSE LATERALS SHALL BE CONSTRUCTED IN A STRAIGHT ALIGNMENT AT RIGHT ANGLES FROM THE MAIN LINE SEWER EXCEPT AS SHOWN ON THE PLANS. HOUSE LATERALS FROM CHIMNEYS SHALL NOT HAVE AN ANGLE OF LESS THAN 45° WITH THE MAIN LINE SEWER. ANY CHANGE IN ALIGNMENT SHALL BE REQUESTED IN WRITING BY THE PRIVATE ENGINEER.
 4. THE PRIVATE ENGINEER SHALL FURNISH THE HOUSE LATERAL DEPTH AT THE PROPERTY LINE BELOW THE TOP OF CURB ELEVATION FOR EACH HOUSE LATERAL ON THE GRADE SHEET.
 5. NO REVISIONS SHALL BE MADE IN THESE PLANS WITHOUT THE APPROVAL OF THE COUNTY ENGINEER.
 6. THE CONTRACTOR SHALL NOTIFY THE CONSTRUCTION DIVISION BY TELEPHONE, MADISON 9-4747, EXT. 81531, AT LEAST TWENTY-FOUR HOURS BEFORE STARTING ANY WORK UNDER THIS CONTRACT.
 7. MANHOLES SHALL BE BRICK SEWER STRUCTURES PER S-104. PRECAST CONCRETE MANHOLES PER S-135 OR S-173 MAY BE USED AS AN ALTERNATE IN LOCATIONS APPROVED BY THE COUNTY ENGINEER.
 8. USE STANDARD MANHOLE FRAMES AND COVERS, S-117.
 9. MANHOLE TOPS IN UNIMPROVED RIGHTS-OF-WAY TO BE SIX INCHES ABOVE FINISHED GRADE.
 10. USE EXTRA STRENGTH PIPE. ALL PIPE IS STANDARD DEPTH EXCEPT AS NOTED.
 11. USE MECHANICAL COMPRESSION JOINTS FOR ALL V.C.P. JOINTS PER SPECS. SEC. 36, 48 & 49.
 12. WHENEVER BRIDGE WATER IS ENCOUNTERED DURING THE CONSTRUCTION OF THE SEWERS, THE V.C.P. JOINTS SHALL BE OF JOINT-CONSTRUCTION PER SPECS. SEC. 36-49 OR MECHANICAL COMPRESSION JOINTS PER SPECS. SEC. 36.
 13. IF A POWER POLE IS WITHIN THREE FEET OF THE SEWER, THE SEWER SHALL BE ENCASED, PER S-172, CASE II, TWO FEET ON EITHER SIDE FROM THE POINT OF INTERFERENCE.
 14. IF DURING THE COURSE OF CONSTRUCTION IT IS DETERMINED THAT THERE IS LESS THAN FOUR FEET OF COVER OVER THE TOP OF A MAIN LINE OR HOUSE LATERAL V.C.P. SEWER WHICH IS NOT INDICATED ON THE PLANS, THE PIPE SHALL BE ENCASED PER S-172, CASE II, UNLESS OTHERWISE APPROVED BY THE COUNTY ENGINEER.
 15. HOUSE LATERALS TO BE CONSTRUCTED WITH INVERTS AT PROPERTY LINE ... FEET BELOW CURB GRADE EXCEPT AS NOTED.
 16. RESURFACE ALL TRENCHES WITHIN PAVED AREAS TO MEET L.A. COUNTY ROAD DEPT. OR CALIFORNIA STATE HIGHWAY REQUIREMENTS IN ACCORDANCE WITH PERMITS.
 17. FOR ALLOWABLE LEAKAGE TEST USE FORMULA NO. ... SPECS. SEC. 54.
 18. (A) NO CONSTRUCTION WILL BE PERMITTED IN FILLED AREAS UNLESS ACCEPTABLE CERTIFICATION IS SUBMITTED TO THE CONSTRUCTION DIVISION OF THE COUNTY ENGINEER'S DEPARTMENT THAT RELATIVE COMPACTION IS GREATER THAN 90%.
 (B) IF COMPACTION IS LESS THAN 90% THE SEWER MUST BE CRODGED AS SHOWN ON THE PLANS PER S-160.
 (C) IF COMPACTION IS GREATER THAN 90% CRODGING OR SPECIAL MANHOLE BASES ARE NOT REQUIRED.
 19. ALL STATE AND LOCAL TRENCH SAFETY ORDERS WILL BE RIGIDLY ENFORCED.

NOTE:
 GRADES TO WHICH THIS IMPROVEMENT IS TO BE CONSTRUCTED ARE SHOWN ON PLANS AND PROFILES. GRADE POINTS FOR TOP OF CURBS, CENTER LINE OF STREETS, OR CENTER LINE OF ALLEYS ARE SHOWN BY CIRCLES ON PROFILES. AT ALL POINTS BETWEEN DESIGNATED POINTS THE GRADE SHALL BE ESTABLISHED SO AS TO CONFORM TO A STRAIGHT LINE DRAWN BETWEEN SAID DESIGNATED POINTS. ELEVATIONS ARE IN FEET ABOVE U.S.C. & G.S. SEA LEVEL DATUM OF 1929.
 THIS DRAWING AND THE DATA HEREON ARE HEREBY MADE A PART OF THE SPECIFICATIONS.
 WORK SHALL BE CONSTRUCTED ACCORDING TO STANDARD SPECIFICATIONS DATED MARCH 25, 1962, ON FILE IN THE OFFICE OF THE COUNTY ENGINEER AND SHALL BE PROSECUTED ONLY IN THE PRESENCE OF THE COUNTY ENGINEER.
 BEFORE WORK CAN BE STARTED, THE CONTRACTOR MUST OBTAIN A PERMIT TO EXCAVATE IN COUNTY STREETS FROM THE L.A. COUNTY ROAD DEPT., DISTRICT OFFICE NO. 5, AND PAY A FEE TO THE COUNTY ENGINEER, ROOM 320, COUNTY ENGINEERING BUILDING, 108 WEST SECOND STREET OR ... ANTELOPE VALLEY ... REGIONAL OFFICE, SUFFICIENT TO COVER THE COST OF CONSTRUCTION INSPECTION AND RECORD PLANS.
 APPROVAL OF THIS PLAN BY THE COUNTY OF LOS ANGELES DOES NOT CONSTITUTE A REPRESENTATION AS TO THE ACCURACY OF THE LOCATION OF OR THE EXISTENCE OR NON-EXISTENCE OF ANY UNDERGROUND UTILITY PIPE, OR STRUCTURE WITHIN THE LIMITS OF THIS PROJECT. THIS NOTE APPLIES TO ALL PAGES.
 NO WORK IS TO BE DONE IN A STATE HIGHWAY. A PERMIT MUST BE OBTAINED FROM THE STATE OF CALIFORNIA, DIVISION OF HIGHWAYS, 120 SOUTH BRING STREET, LOS ANGELES, CALIFORNIA.

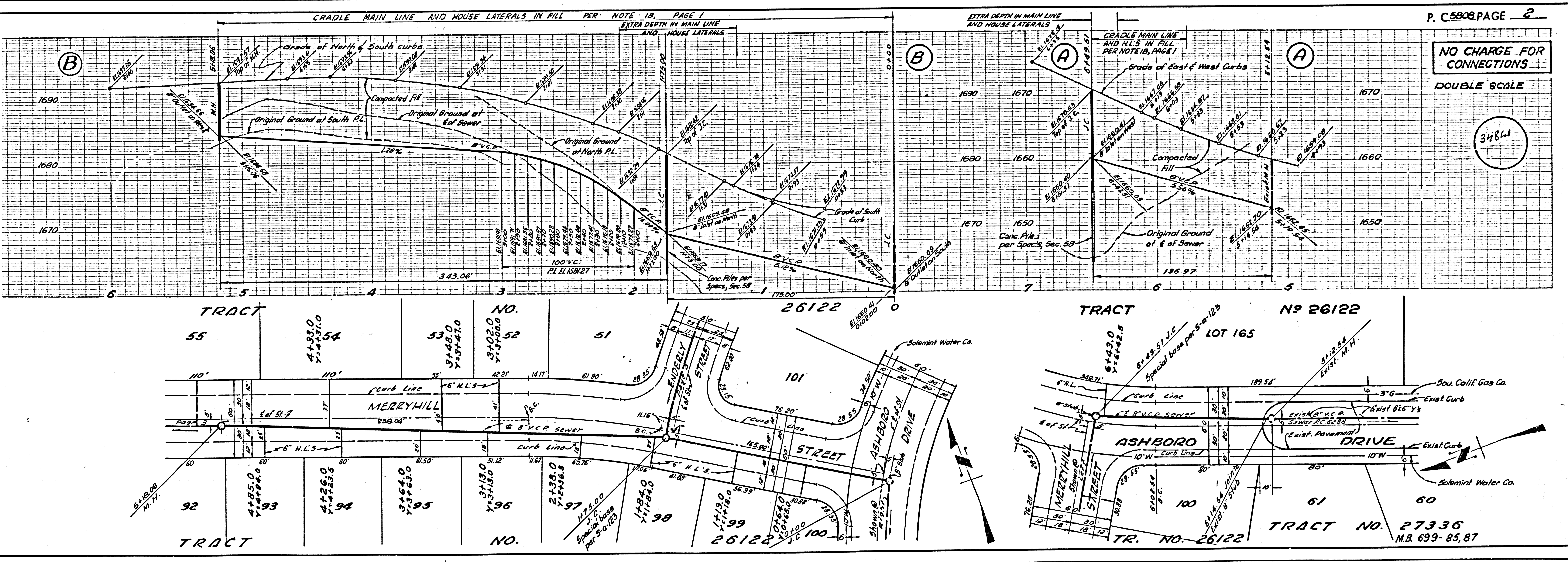
COUNTY OF LOS ANGELES, CALIFORNIA
 JOHN A. LAMBIE, COUNTY ENGINEER J. D. PARKHURST, CHIEF ENGINEER
 CO. SAN. DIST. NO. 200
 APPROVED BY: *Robert E. Klein* ASSISTANT SANITATION ENGINEER APPROVED BY: *LaCosta* OFFICE ENGINEER

CHECKED BY: *W. Onda* 5-16-64
 REG. C.E. NO. 2406

COLLECT CHARGES AS INDICATED
Robert E. Klein 2/1/62

NO CONNECTIONS FOR THE DISPOSAL OF INDUSTRIAL WASTES SHALL BE MADE TO SEWERS SHOWN ON THESE DRAWINGS WITHOUT WRITTEN PERMISSION FROM THE CHIEF ENGINEER AND GENERAL MANAGER OF THE COUNTY SANITATION DISTRICTS.

J.N. 0355.41



P.C. 5808 PAGE 2

NO CHARGE FOR CONNECTIONS

DOUBLE SCALE

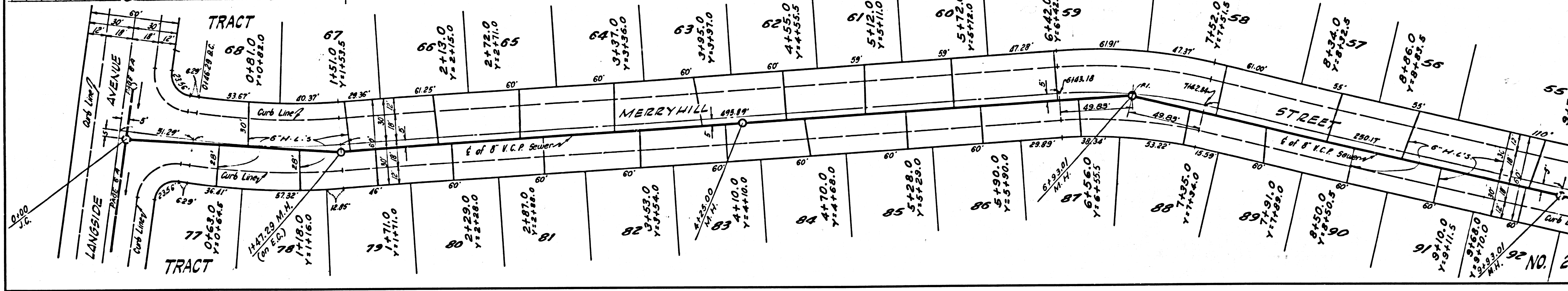
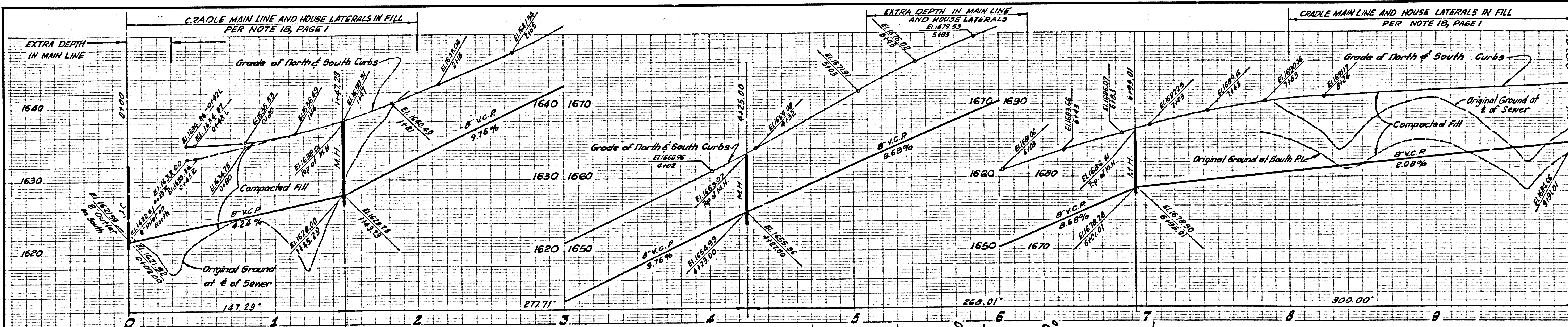
34861

DOUBLE SCALE
NO CHARGE FOR CONNECTIONS

34861

NO. 26122

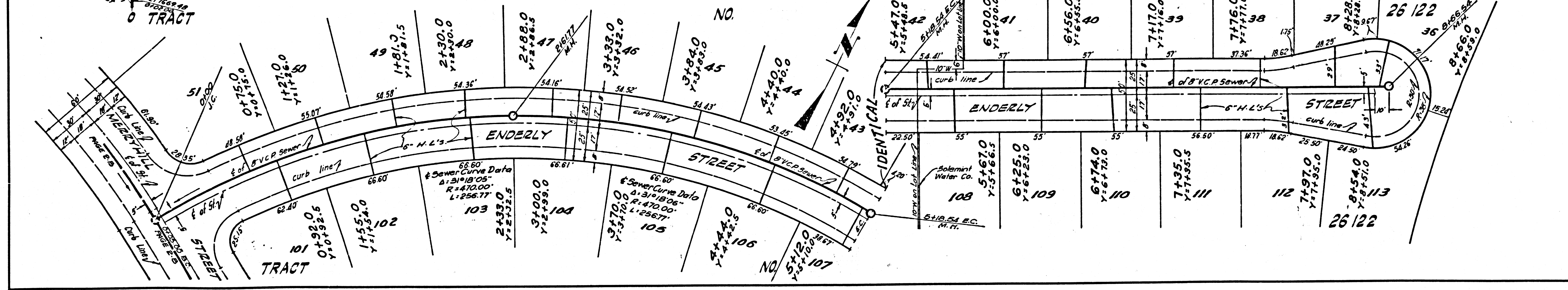
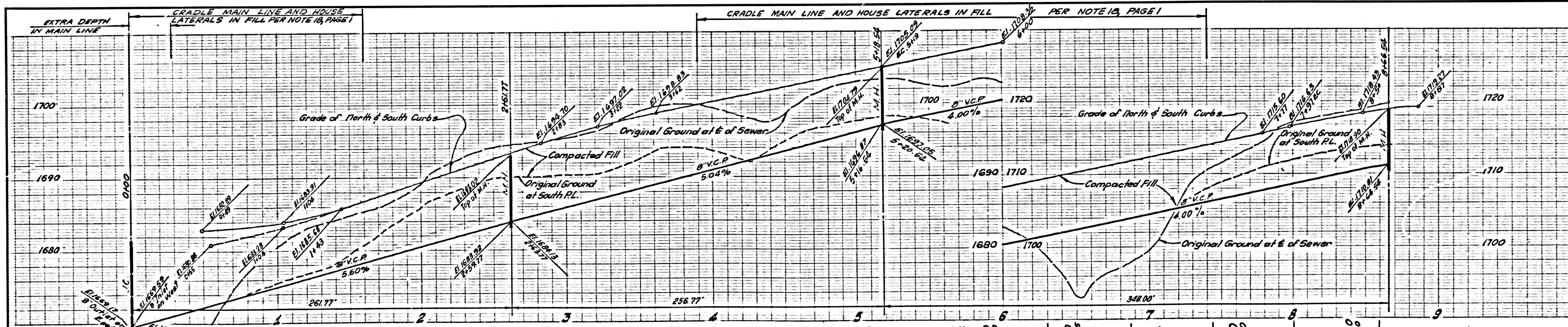
NO. 26122 93

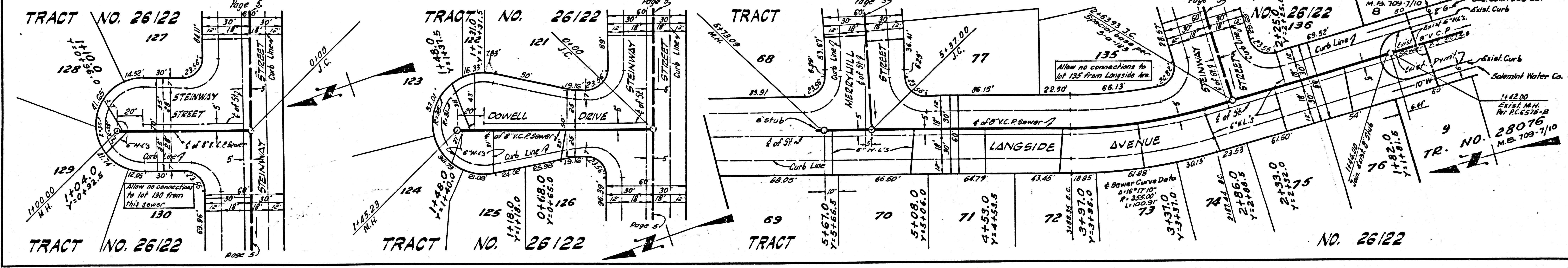
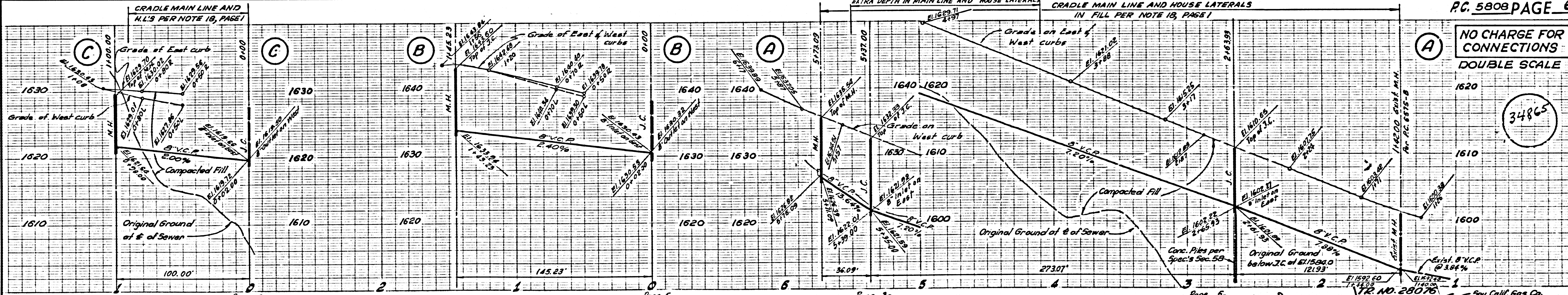
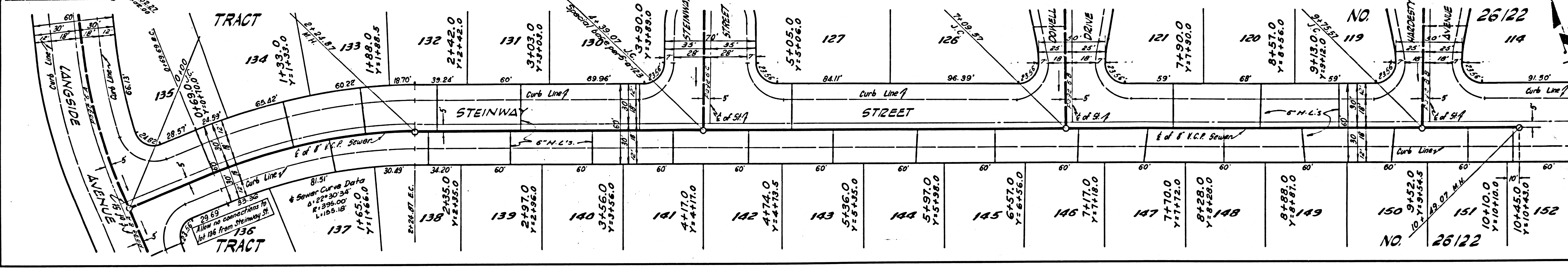
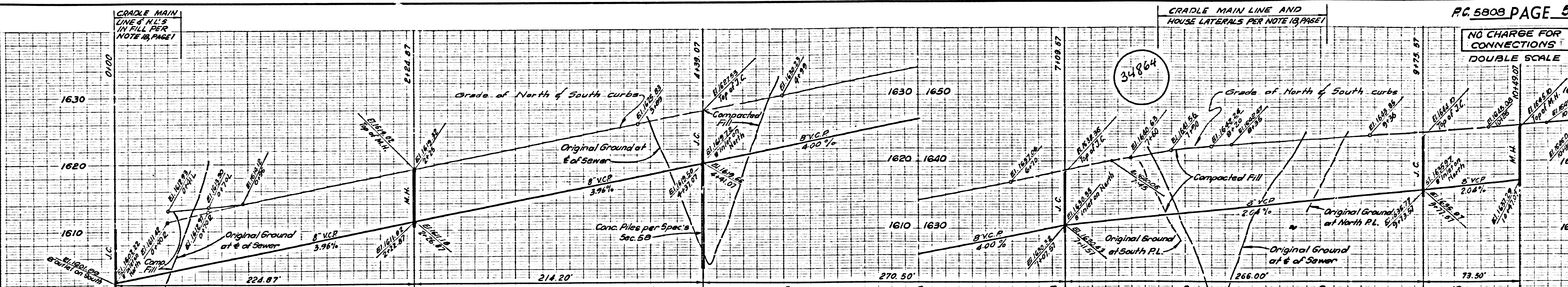


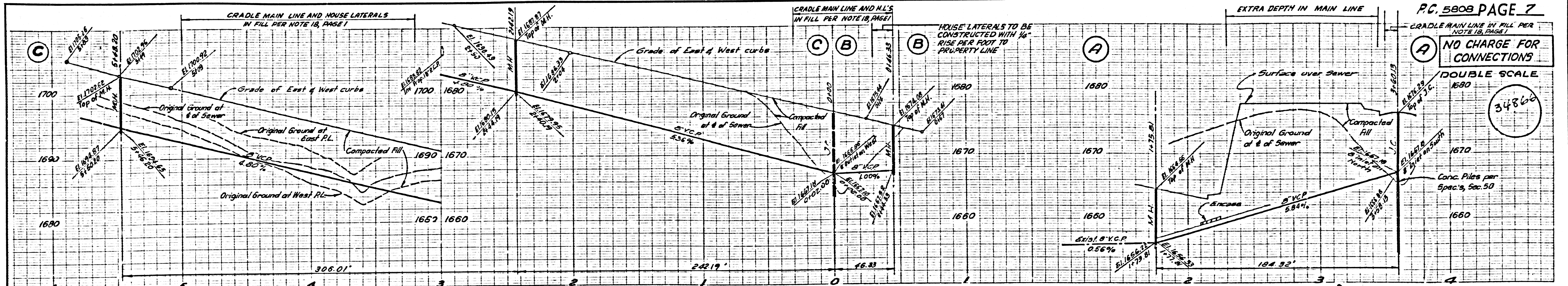
DOUBLE SCALE
NO CHARGE FOR CONNECTIONS

34863

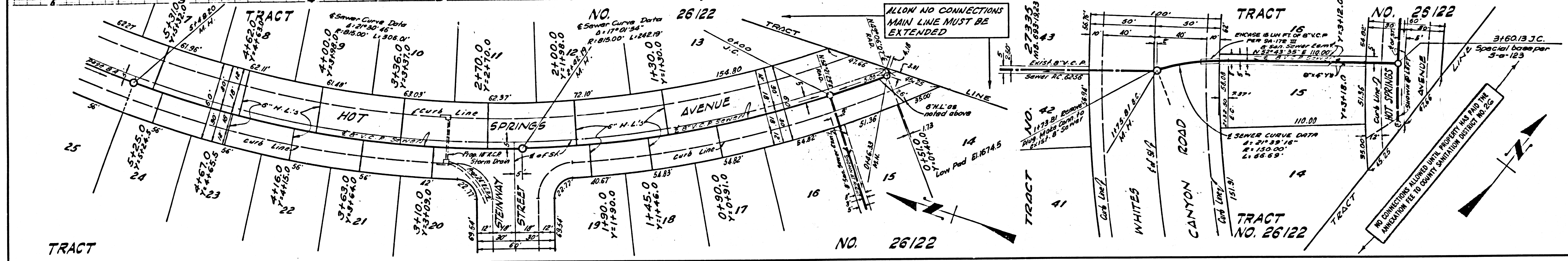
NO. 26122



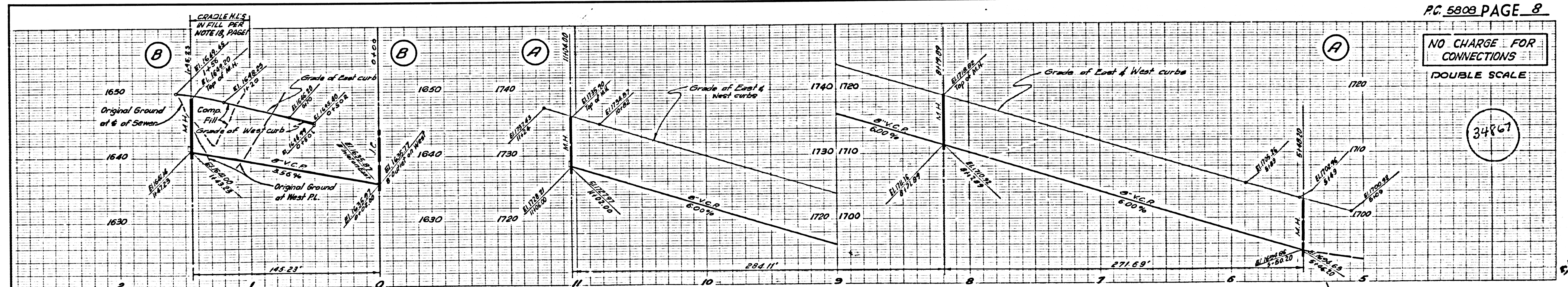




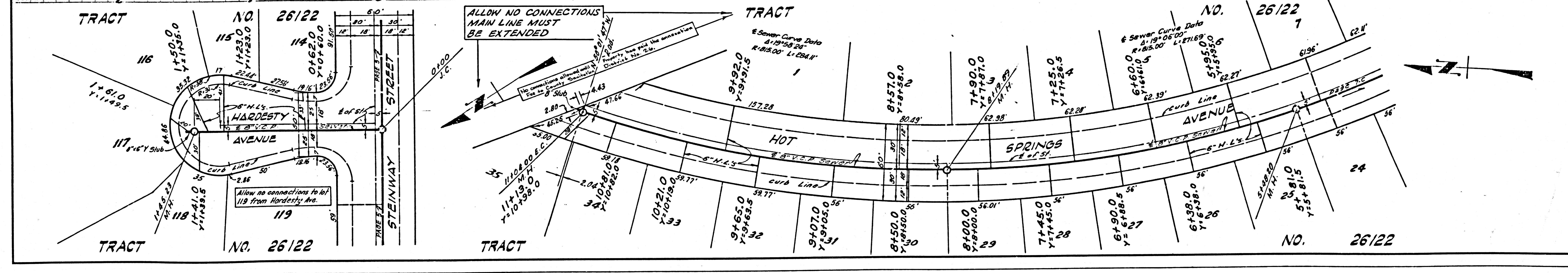
PC. 5808 PAGE 7
 CRADLE MAIN LINE IN FILL PER NOTE 18, PAGE 1
 NO CHARGE FOR CONNECTIONS
 DOUBLE SCALE
 34860



NO CHARGE FOR CONNECTIONS
 DOUBLE SCALE
 34867



PC. 5808 PAGE 8
 NO CHARGE FOR CONNECTIONS
 DOUBLE SCALE
 34867



NO CHARGE FOR CONNECTIONS
 DOUBLE SCALE
 34867

PROPERTY OF THE
 COUNTY OF LOS ANGELES
 DEPARTMENT OF COUNTY ENGINEER

15071 NO. 58155 DC 2808