

B.M. 56.1092 ELEV. 303.716  
 SET 1/8 IN. END WINGWALL OF CULVERT ON S. SIDE OF DRIVEWAY TO HOUSE # 236 SUNSET AVE. 230' E. OF CENTERLINE SUNSET AVE. PUENTE QUAD. 1955 ADJ.

LA PUENTE BLDG. DIST. NO. 2.02

PROFILE ALIGNMENT AND GRADE OF P.C. 5809  
 SANITARY SEWERS PAGE 1  
 TO BE CONSTRUCTED IN  
 SUNSET AVENUE

REVISION  
 PAGE 1  
 1. Cement mortar deleted from general note N° 8.  
 APPROVED *W.C. Reindenter*  
 SAN DIMAS REGIONAL ENGINEER

- NOTES:
1. PROVIDE STAKES ON THE PROPERTY LINE OR PROPERTY LINES PRODUCED AT RIGHT ANGLES TO THE SEWER LINE AT THE CENTER LINE OF EACH MANHOLE.
  2. NO REPRESENTATIVE OF THE CITY ENGINEER WILL SURVEY OR LAY OUT ANY PORTION OF THE WORK.
  3. THE OWNER OR HIS AUTHORIZED REPRESENTATIVE SHALL FURNISH THE CITY ENGINEER WITH GRADE SHEETS AND STATIONING FOR ALL HOUSE LATERALS AND Y BRANCHES AND SHALL PROVIDE STAKES OR THEM AT THEIR PROPER LOCATIONS WITH STATIONING PLAINLY MARKED. ANY CHANGE IN LOCATION SHALL BE REQUESTED IN WRITING BY THE OWNER OR HIS REPRESENTATIVE.
  4. THE PRIVATE ENGINEER SHALL FURNISH THE HOUSE LATERAL DEPTH AT THE PROPERTY LINE BELOW THE TOP OF CURB ELEVATION FOR EACH HOUSE LATERAL ON THE GRADE SHEET.
  5. NO REVISIONS SHALL BE MADE IN THESE PLANS WITHOUT THE APPROVAL OF THE CITY ENGINEER.
  6. USE STANDARD MANHOLE FRAMES AND COVERS, S-117A.
  7. USE STANDARD STRENGTH PIPE EXCEPT AS NOTED.
  8. USE "WEDGE-LOCK" OR "SPEED-SEAL" FOR ALL Y.C.P. JOINTS PER SPECS. SECS. 34 & 36.
  9. RESURFACE ALL TRENCH WITHIN PAVED AREA TO MEET L.A. COUNTY ROAD DEPT. OR CALIF. STATE HIGHWAY REQUIREMENTS IN ACCORDANCE WITH PERMITS.
  10. ENCASE FOUR FEET OF SEWER AT POINTS OF INTERFERENCE WITH POLES, CASE III, S-117.
  11. ALL STRUCTURES SHALL BE BRICK SEWER STRUCTURES, S-104.
  12. FOR ALLOWABLE LEAKAGE TEST USE FORMULA NO. 1, SPECS. SEC. 34.
  13. MANHOLE TOPS IN UNIMPROVED RIGHTS-OF-WAY TO BE SIX INCHES ABOVE FINISHED GRADE.
  14. THE CONTRACTOR SHALL NOTIFY THE CONSTRUCTION & STORM DRAIN DIVISION BY TELEPHONE, MADISON 9-4747, EX 8187 AT LEAST TWENTY-FOUR HOURS BEFORE STARTING ANY WORK UNDER THIS CONTRACT.
  15. STANDARD SPECIFICATIONS DATED JANUARY, 1960 APPLY IN CONSTRUCTION OF THIS PROJECT.

PRIVATE CONTRACT NO. 5809

W.S. 46  
 1 SHEETS; 2 PAGES

30567

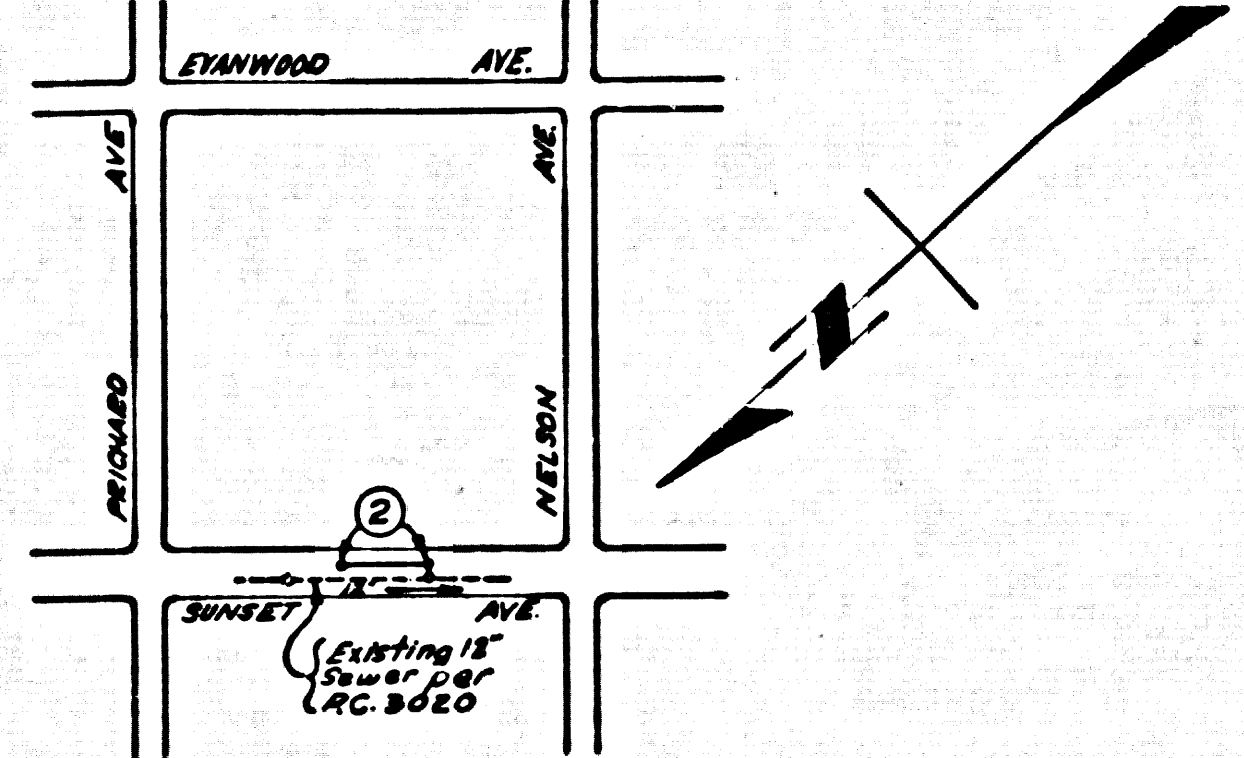
SCALE: VERT. 1"=4'  
 HORIZ. 1"=40'  
 FEBRUARY, 1961  
 PREPARED IN THE OFFICES OF

DUTCH HOLZHAUER & ASSOCIATES

BY: *W.C. Reindenter*  
 REG. P. E. NO. 10219

FOR LEGEND SEE PLAN NO. S-A-64

NOTE:  
 GRADES TO WHICH THIS IMPROVEMENT IS TO BE CONSTRUCTED ARE SHOWN ON PLANS AND PROFILES. GRADE POINTS FOR TOP OF CURBS, CENTER LINE OF STREETS, OR CENTER LINE OF ALLEYS ARE SHOWN BY CIRCLES ON PROFILES. AT ALL POINTS BETWEEN DESIGNATED POINTS THE GRADE SHALL BE ESTABLISHED SO AS TO CONFORM TO A STRAIGHT LINE DRAWN BETWEEN SAID DESIGNATED POINTS.  
 ELEVATIONS ARE IN FEET ABOVE U.S.C. & G.S. SEA LEVEL DATUM OF 1929.  
 THIS DRAWING AND THE DATA HEREON ARE HEREBY MADE A PART OF THE SPECIFICATIONS. WORK SHALL BE CONSTRUCTED ACCORDING TO SPECIFICATIONS ON FILE IN THE OFFICE OF THE CITY ENGINEER AND SHALL BE PROSECUTED ONLY IN THE PRESENCE OF THE CITY ENGINEER.  
 BEFORE WORK CAN BE STARTED, THE CONTRACTOR MUST OBTAIN A PERMIT TO EXCAVATE IN CITY STREETS FROM THE L.A. COUNTY ROAD DEPT., DISTRICT OFFICE NO. 4, AND MAKE A DEPOSIT WITH THE CITY ENGINEER SUFFICIENT TO COVER THE COST OF CONSTRUCTION INSPECTION AND RECORD PLANS.  
 APPROVAL OF THIS PLAN BY THE CITY OF LA PUENTE DOES NOT CONSTITUTE A REPRESENTATION AS TO THE ACCURACY OF THE LOCATION OF OR THE EXISTENCE OR NON-EXISTENCE OF ANY UNDERGROUND UTILITY PIPE, OR STRUCTURE WITHIN THE LIMITS OF THIS PROJECT. THIS NOTE APPLIES TO ALL PAGES.  
 IF WORK IS TO BE DONE IN A STATE HIGHWAY, A PERMIT MUST BE OBTAINED FROM THE STATE OF CALIFORNIA, DIVISION OF HIGHWAYS, 120 SOUTH SPRING STREET.

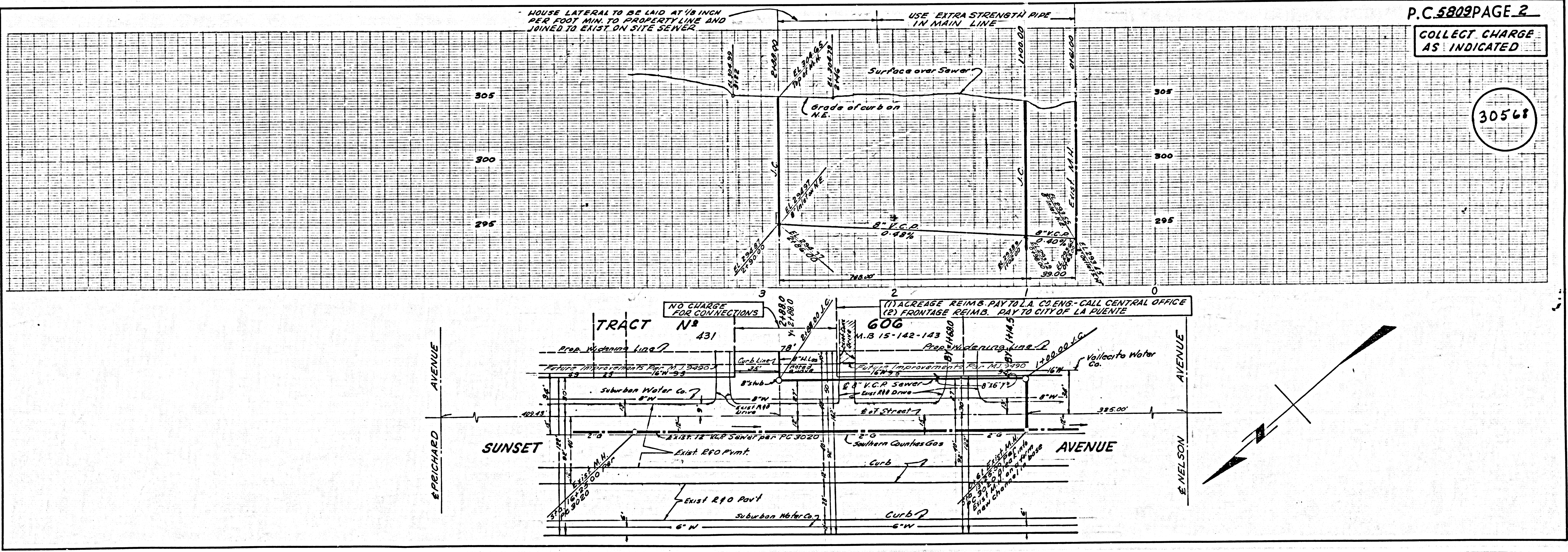


INDEX MAP  
 SCALE: 1"=600'

COLLECT CHARGE AS INDICATED  
*W.C. Reindenter* 4-27-61

NO CONNECTIONS FOR THE DISPOSAL OF INDUSTRIAL WASTES SHALL BE MADE TO SEWERS SHOWN ON THESE DRAWINGS WITHOUT WRITTEN PERMISSION FROM THE CHIEF ENGINEER AND GENERAL MANAGER OF THE COUNTY SANITATION DISTRICTS.

CITY OF LA PUENTE CALIFORNIA  
 APPROVED, JOHN A. LAMBIE, CITY ENGINEER APPROVED, C.R. COMPTON CHIEF ENGINEER  
 CO. SAN. DIST. NO. 15  
 BY: *C.E. Brundage* ASST. SANITATION ENGINEER BY: *W.C. Reindenter* OFFICE ENGINEER  
 CHECKED BY: *W.C. Reindenter* 5-1-61  
 OFFICE OF CITY ENGINEER, REG. C. E. NO. 846  
 APPROVED: *W.C. Reindenter* 4-28-61  
 CITY MANAGER - CITY OF LA PUENTE  
 SUBMITTED: *W.C. Reindenter* 4-27-61  
 SAN DIMAS REGIONAL ENGINEER



P.C. 5809 PAGE 2  
 COLLECT CHARGE AS INDICATED

30568