

B.M. S.G. 1510 ELEV. 659.623  
 LOS ANGELES COUNTY SURVEY MONUMENT IN  
 40' x 40' BELOW SURFACE AT INTERSECTION OF GRAND  
 AVE & JUANITA AVE.  
 (SAN DIMAS QUAD.)

SAN DIMAS BLDG. DIST. NO. 10

PROFILE ALIGNMENT AND GRADE OF P.C. 5811  
 SANITARY SEWERS PAGE 1  
 TO BE CONSTRUCTED IN J.N. - 0355.43  
 TRACT No 26115

PRIVATE CONTRACT NO. 5811

W.S. 48  
 6 SHEETS; 9 PAGES

SCALE: VERT. 1" = 4' FEBRUARY, 1961  
 HORIZ. 1" = 40'  
 PREPARED IN THE OFFICES OF  
 DUTCH HOLZHAUER & ASSOCIATES

By: *W.C. Poindexter*  
 REG. C. E. NO. 10212  
 FOR LEGEND SEE PLAN NO. S-A-64

NOTE:  
 GRADES TO WHICH THIS IMPROVEMENT IS TO BE CONSTRUCTED ARE SHOWN ON PLANS AND PROFILES. GRADE POINTS FOR TOP OF CURBS, CENTER LINE OF STREETS, OR CENTER LINE OF ALLEYS ARE SHOWN BY CIRCLES ON PROFILES. AT ALL POINTS BETWEEN DESIGNATED POINTS THE GRADE SHALL BE ESTABLISHED SO AS TO CONFORM TO A STRAIGHT LINE DRAWN BETWEEN SAID DESIGNATED POINTS.  
 ELEVATIONS ARE IN FEET ABOVE U.S.C. & G.S. SEA LEVEL DATUM OF 1929.  
 THIS DRAWING AND THE DATA HEREON ARE HEREBY MADE A PART OF THE SPECIFICATIONS.  
 WORK SHALL BE CONSTRUCTED ACCORDING TO SPECIFICATIONS ON FILE IN THE OFFICE OF THE COUNTY ENGINEER AND SHALL BE PROSECUTED ONLY IN THE PRESENCE OF THE COUNTY ENGINEER.  
 BEFORE WORK CAN BE STARTED THE CONTRACTOR MUST OBTAIN A PERMIT TO EXCAVATE IN COUNTY STREETS FROM THE L.A. COUNTY ROAD DEPT., DISTRICT OFFICE NO. 1, AND MAKE A DEPOSIT WITH THE COUNTY ENGINEER ROOM 310 L.A. COUNTY ENGINEER BLDG. 100 N. GARDEN ST., L.A., SUFFICIENT TO COVER THE COST OF CONSTRUCTION INSPECTION AND RECORD PLANS.  
 APPROVAL OF THIS PLAN BY THE COUNTY OF LOS ANGELES DOES NOT CONSTITUTE A REPRESENTATION AS TO THE ACCURACY OF THE LOCATION OR OF THE EXISTENCE OR NON-EXISTENCE OF ANY UNDERGROUND UTILITY PIPE, OR STRUCTURE WITHIN THE LIMITS OF THIS PROJECT. THIS NOTE APPLIES TO ALL PAGES.  
 IF WORK IS TO BE DONE IN A STATE HIGHWAY, A PERMIT MUST BE OBTAINED FROM THE STATE OF CALIFORNIA, DIVISION OF HIGHWAYS, 120 SOUTH SPRING STREET.

COUNTY OF LOS ANGELES, CALIFORNIA

APPROVED, JOHN A. LAMBIE, COUNTY ENGINEER APPROVED, C.R. COMPTON, CHIEF ENGINEER

BY: *C.E. Priddy* ASST. SANITATION ENGINEER BY: *M. Carstairs* OFFICE ENGINEER

CHECKED BY: *W.C. Poindexter* 4-13-61  
 OFFICE OF COUNTY ENGINEER, REG. C. E. NO. 9466

SUBMITTED: *W.C. Poindexter* 4-12-61  
 SAN DIMAS REGIONAL ENGINEER

- NOTES:
1. PROVIDE STAKES ON THE PROPERTY LINE OR PROPERTY LINES PRODUCED AT RIGHT ANGLES TO THE SEWER LINE AT THE CENTER LINE OF EACH MANHOLE.
  2. NO REPRESENTATIVE OF THE COUNTY ENGINEER WILL SURVEY OR LAY OUT ANY PORTION OF THE WORK.
  3. THE OWNER OR HIS AUTHORIZED REPRESENTATIVE SHALL FURNISH THE COUNTY ENGINEER WITH GRADE SHEETS AND STATIONING FOR ALL HOUSE LATERALS AND Y BRANCHES AND SHALL PROVIDE STAKES FOR THEM AT THEIR PROPER LOCATIONS WITH STATIONING PLAINLY MARKED. ANY CHANGE IN LOCATION SHALL BE REQUESTED IN WRITING BY THE OWNER OR HIS REPRESENTATIVE.
  4. THE PRIVATE ENGINEER SHALL FURNISH THE HOUSE LATERAL DEPTH AT THE PROPERTY LINE BELOW THE TOP OF CURB ELEVATION FOR EACH HOUSE LATERAL ON THE GRADE SHEET.
  5. NO REVISIONS SHALL BE MADE IN THESE PLANS WITHOUT THE APPROVAL OF THE COUNTY ENGINEER.
  6. USE STANDARD MANHOLE FRAMES AND COVERS, S-117, EXCEPT AS NOTED.
  7. USE STANDARD STRENGTH PIPE EXCEPT AS NOTED.
  8. USE CEMENT MORTAR OR "WEDGE-LOCK" OR "SPEED-SEAL" FOR ALL V.C.P. JOINTS PER S117, SECS. 34 & 40.
  9. RESURFACE ALL TRENCH WITHIN PAVED AREA TO MEET L.A. COUNTY ROAD DEPT. OR CALIF. STATE HIGHWAY REQUIREMENTS IN ACCORDANCE WITH PERMITS.
  10. ENCASE FOUR FEET OF SEWER AT POINTS OF INTERFERENCE WITH POLES, CASE III, S-172.
  11. HOUSE LATERALS TO BE CONSTRUCTED WITH INVERTS AT PROPERTY LINE 6 FEET BELOW CURB GRADE EXCEPT AS NOTED.
  12. ALL STRUCTURES SHALL BE BRICK SEWER STRUCTURES, S-194.
  13. FOR ALLOWABLE LEAKAGE TEST USE FORMULA NO. 1, SPC'S, SEC. 54.
  14. MANHOLE TOPS IN UNIMPROVED RIGHTS-OF-WAY TO BE SIX INCHES ABOVE FINISHED GRADE.
  15. THE CONTRACTOR SHALL NOTIFY THE CONSTRUCTION DIVISION BY TELEPHONE, MADISON 5-477, EXT. 8591 AT LEAST TWENTY-FOUR HOURS BEFORE STARTING ANY WORK UNDER THIS CONTRACT.
  16. STANDARD SPECIFICATIONS DATED OCT. 10, 1960 APPLY IN CONSTRUCTION OF THIS PROJECT.
  17. THE CONTRACTOR MUST OBTAIN A PERMIT TO EXCAVATE IN CITY STREETS FROM THE CITY OF GLENDDORA.

ISSUE NO PERMITS UNTIL SANITATION DISTRICTS TRUNK SEWER IS CONSTRUCTED AND ACCEPTED.

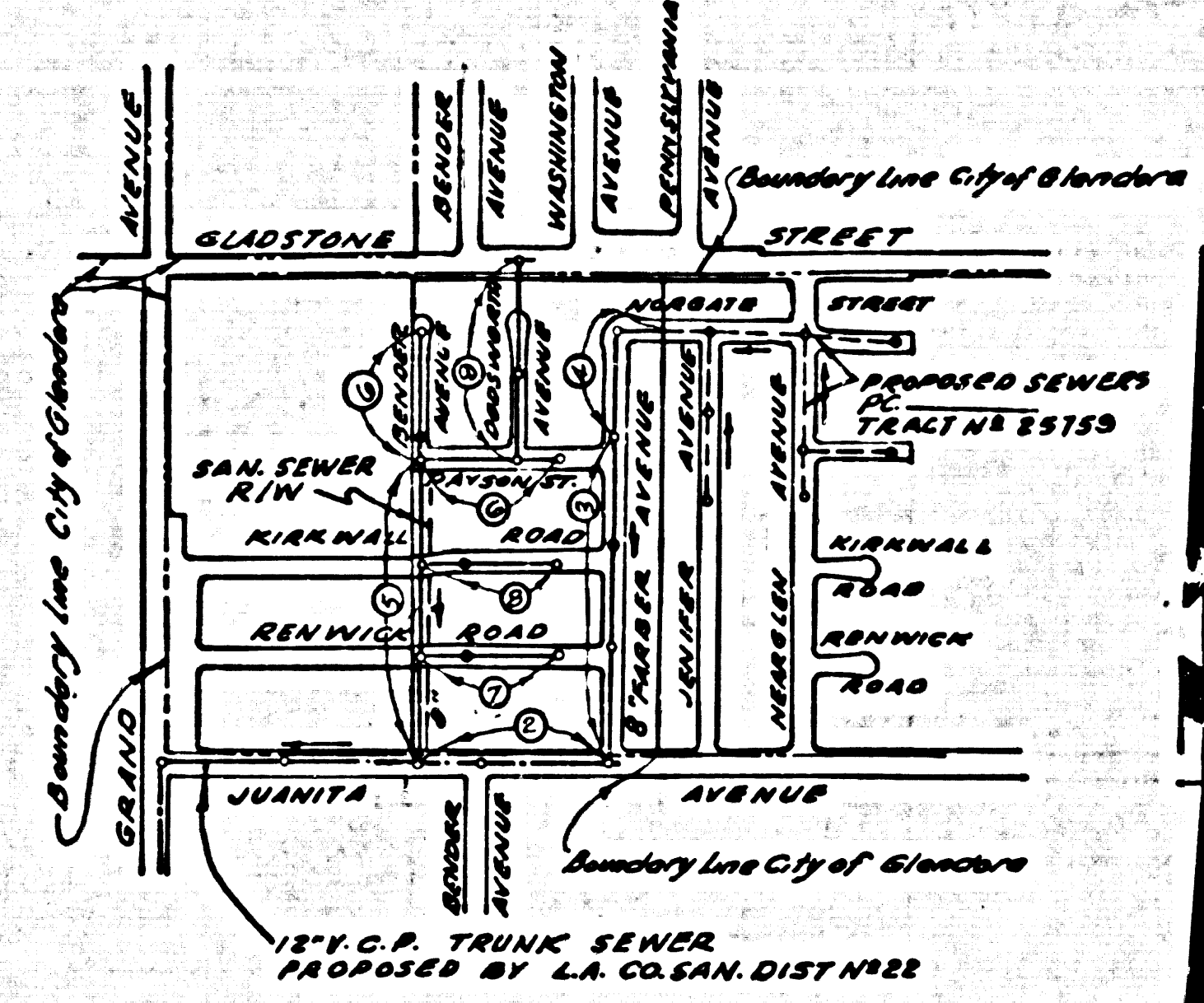
COLLECT CHARGES AS INDICATED

*W.C. Poindexter* 4-12-61

CITY OF GLENDDORA

APPROVED *W.C. Poindexter* ENGINEER

NO CONNECTIONS FOR THE DISPOSAL OF INDUSTRIAL WASTES SHALL BE MADE TO SEWERS SHOWN ON THESE DRAWINGS WITHOUT WRITTEN PERMISSION FROM THE CHIEF ENGINEER AND GENERAL MANAGER OF THE COUNTY SANITATION DISTRICTS.



INDEX MAP  
 TRACT NO. 26115  
 SCALE 1" = 600'

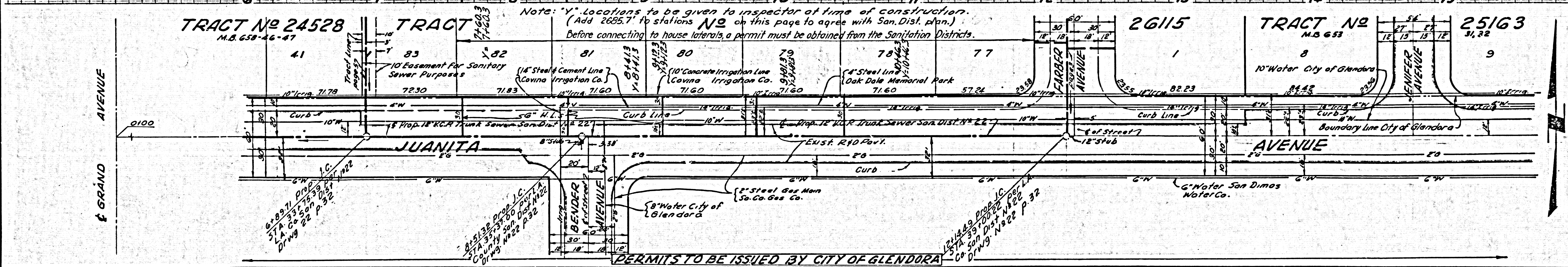
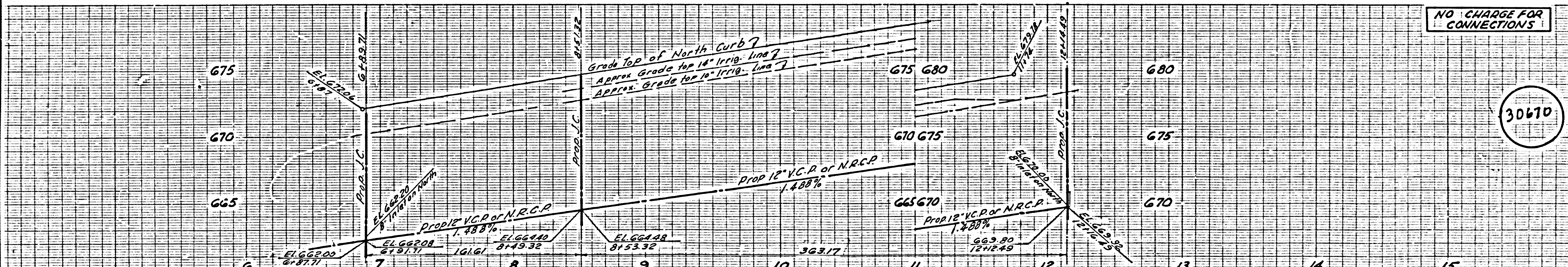
REVISION:  
 Added Cement Mortar to General Note No. 8  
 CHECKED BY: *W.C. Poindexter*  
 OFFICE OF COUNTY ENGINEER, REG. C. E. NO. 9466

NO BREAKING INTO ANY EXISTING STRUCTURE, AND BEFORE FINAL ACCEPTANCE OF THIS WORK COUNTY SANITATION DISTRICT (DU 4-1281) SHALL BE NOTIFIED IN ORDER THAT REQUIRED INSPECTION CAN BE MADE.

P.C. 5811 PAGE 2

NO CHARGE FOR CONNECTIONS

30610



TRACT No 24528  
 M.B. 658-46-47

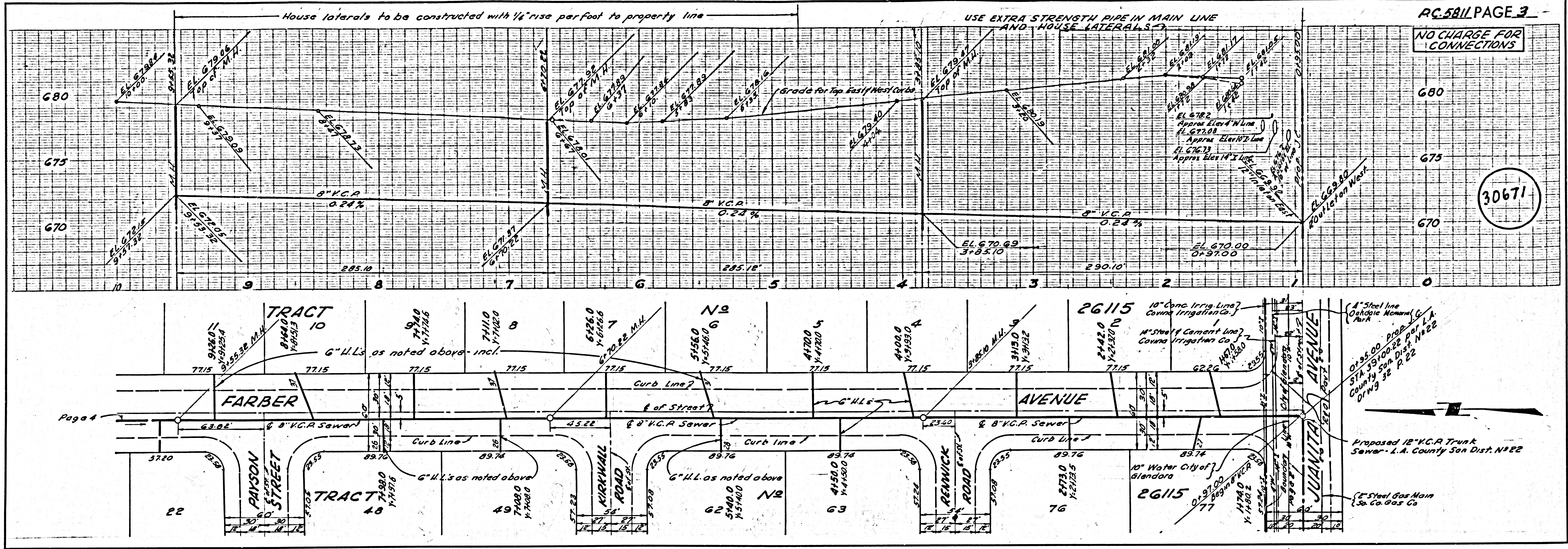
TRACT No 26115  
 M.B. 658-46-48

TRACT No 26115  
 M.B. 658-46-49

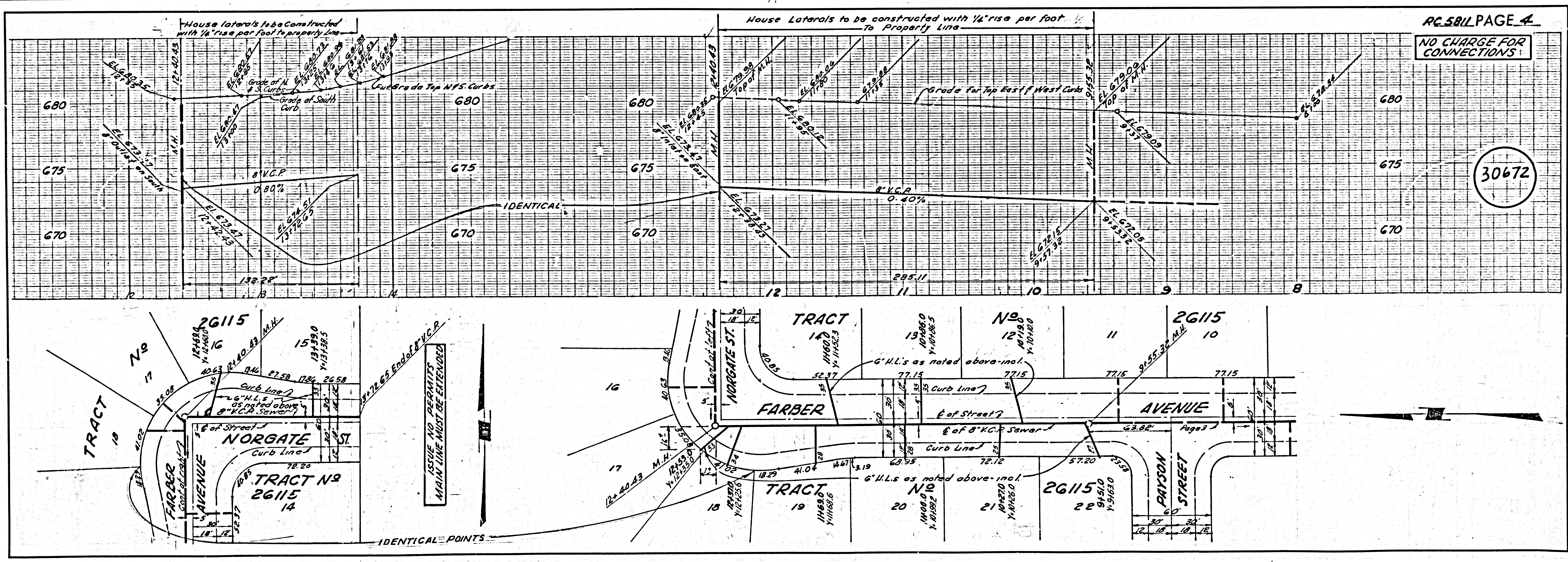
TRACT No 25163  
 M.B. 653-31-32

Note: "Y" Locations to be given to inspector at time of construction. (Add 2635.7' to stations No on this page to agree with San. Dist. Plan.)  
 Before connecting to house laterals, a permit must be obtained from the Sanitation Districts.

PERMITS TO BE ISSUED BY CITY OF GLENDDORA

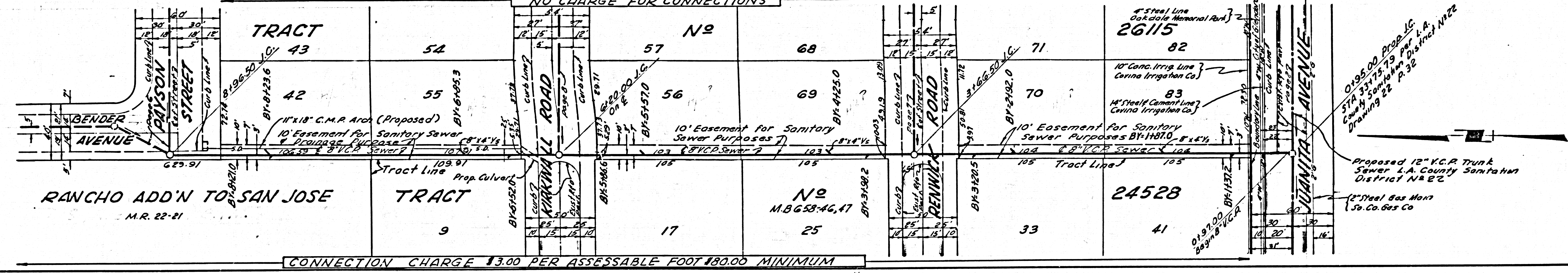
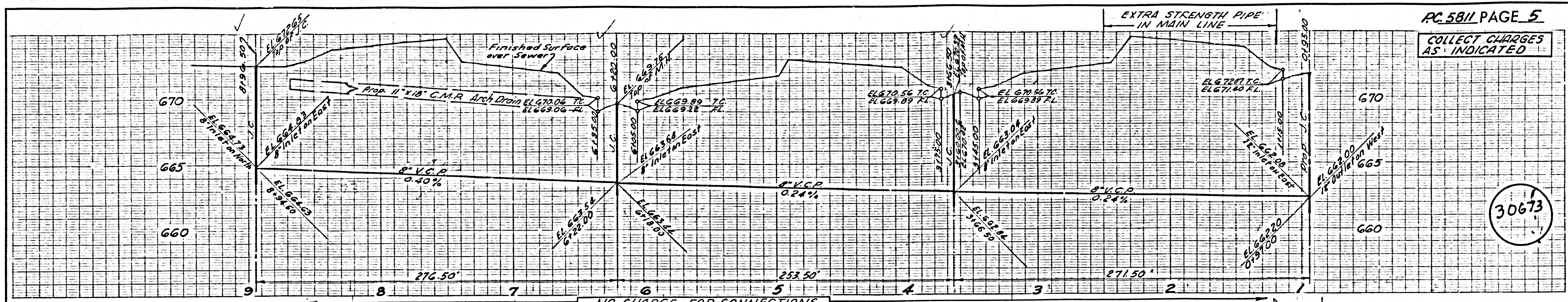


RC 5811 PAGE 3  
 NO CHARGE FOR CONNECTIONS  
 30671



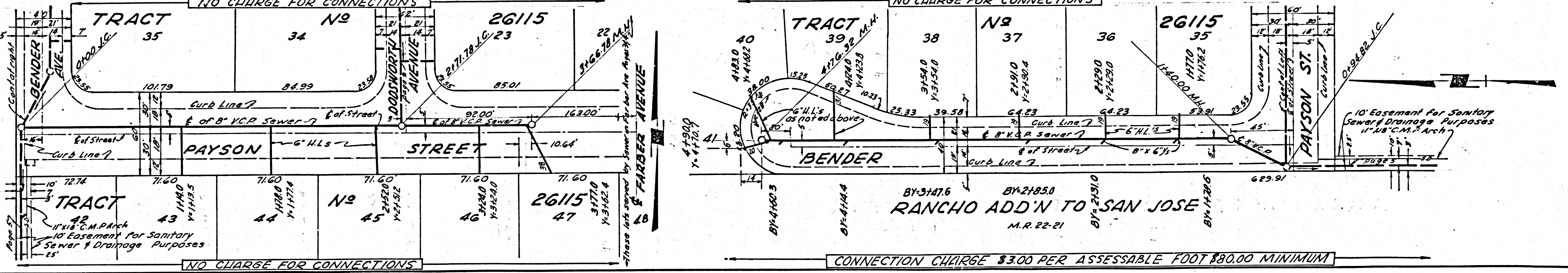
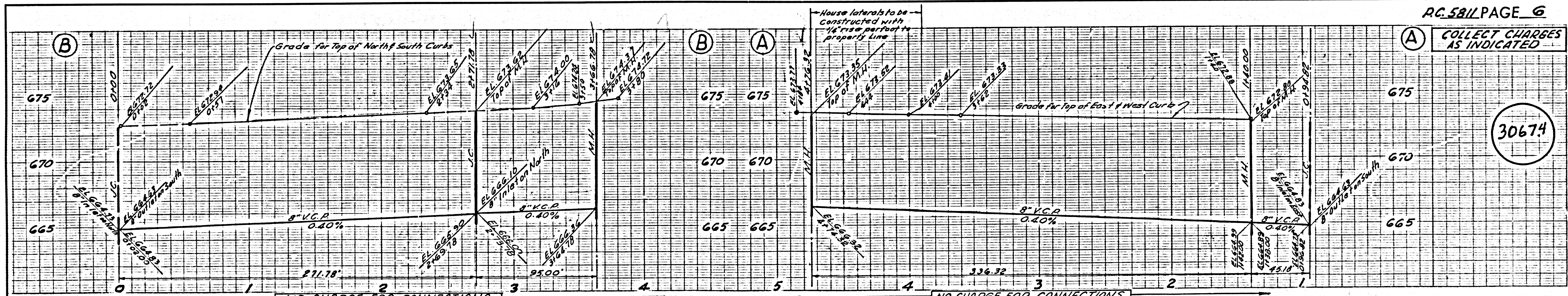
RC 5811 PAGE 4  
 NO CHARGE FOR CONNECTIONS  
 30672

COLLECT CHARGES AS INDICATED



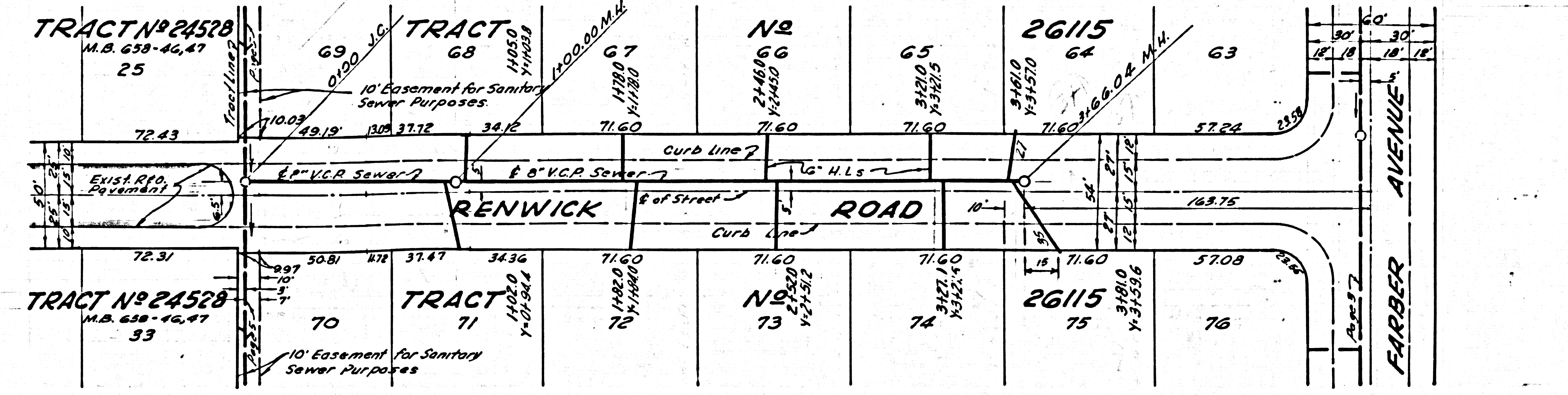
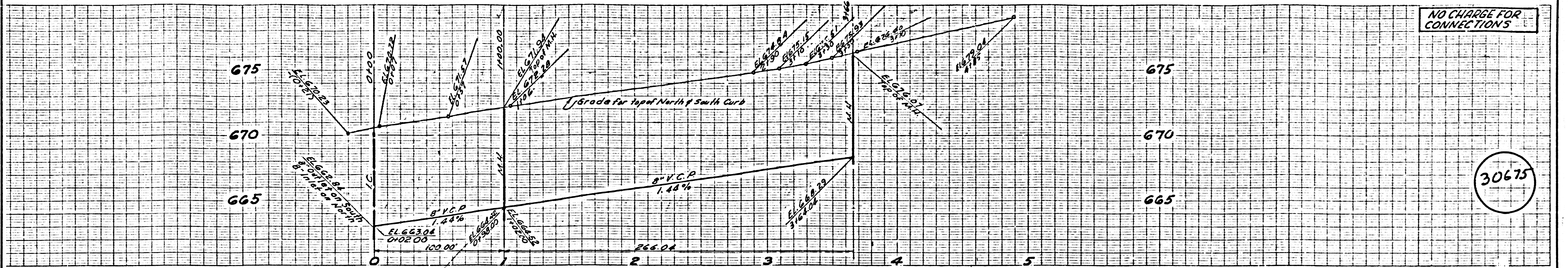
CONNECTION CHARGE \$3.00 PER ASSESSABLE FOOT \$80.00 MINIMUM

COLLECT CHARGES AS INDICATED

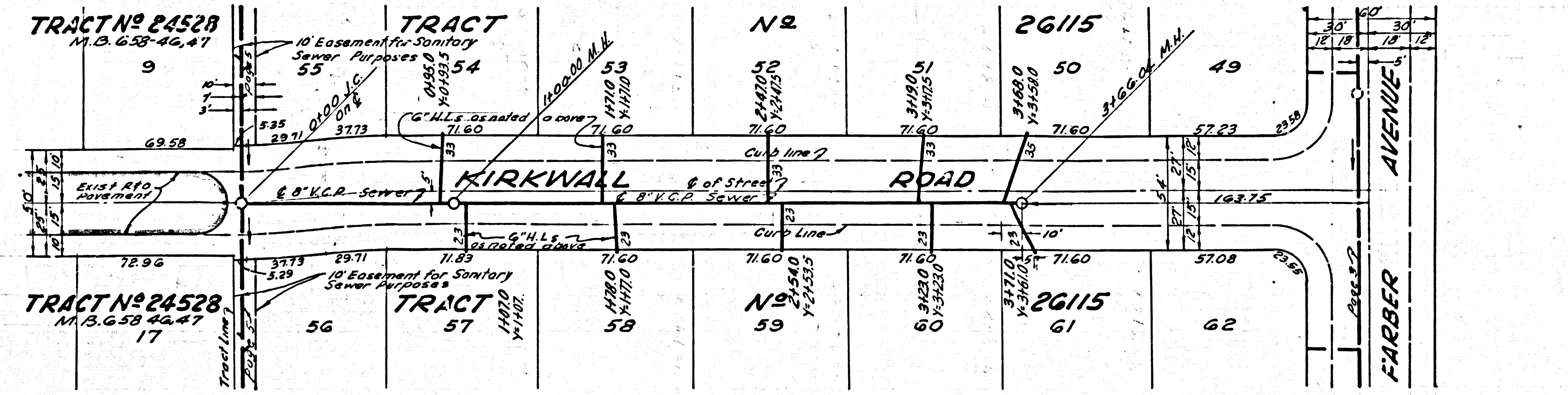
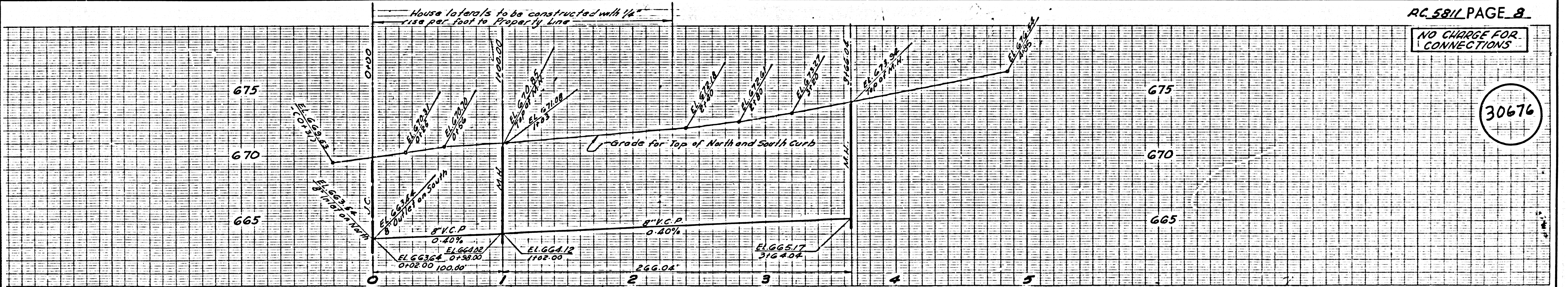


CONNECTION CHARGE \$3.00 PER ASSESSABLE FOOT \$80.00 MINIMUM

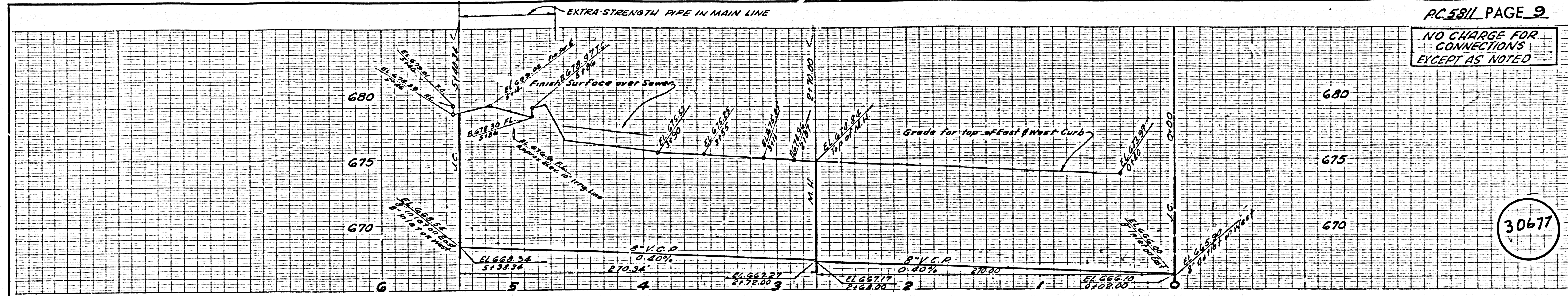
NO CHARGE FOR CONNECTIONS



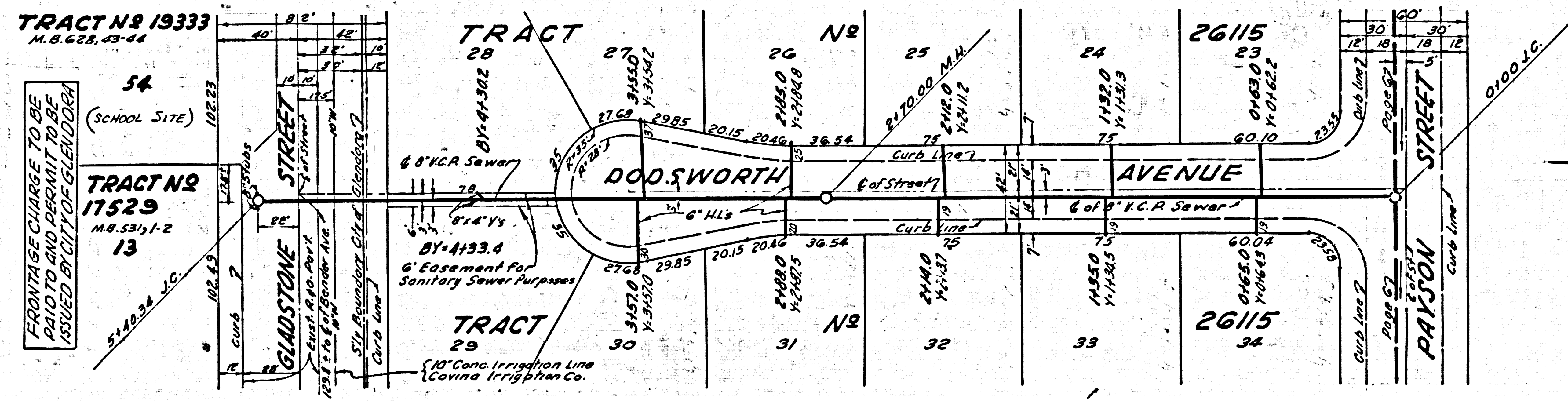
NO CHARGE FOR CONNECTIONS



NO CHARGE FOR CONNECTIONS EXCEPT AS NOTED



30677



30677