

**BENCH MARK**  
 SY 4042 ELEV. 171.836 (1955 ADJ.) L.A. COUNTY ROAD DEPARTMENT MONUMENT IN MAC PAVEMENT 6'-E. OF E. OF LUITWIELER AVE. AND 18'-1 1/2" W. OF TELE POLE N° 456311-1234' S. SOUTH OF E. OF IMPERIAL HIGHWAY IN CASING WITH COVER L.A. MIRADA QUAD.

**NORWALK BLDG. DIST. NO. 42**

PROFILE ALIGNMENT AND GRADE OF **P.C. 5812**  
**SANITARY SEWERS PAGE 1**

TO BE CONSTRUCTED IN  
**TRACT N° 24973**

**JN 0355.44**

**PRIVATE CONTRACT NO. 5812**

**W.S. 34**

**3 SHEETS; 6 PAGES**

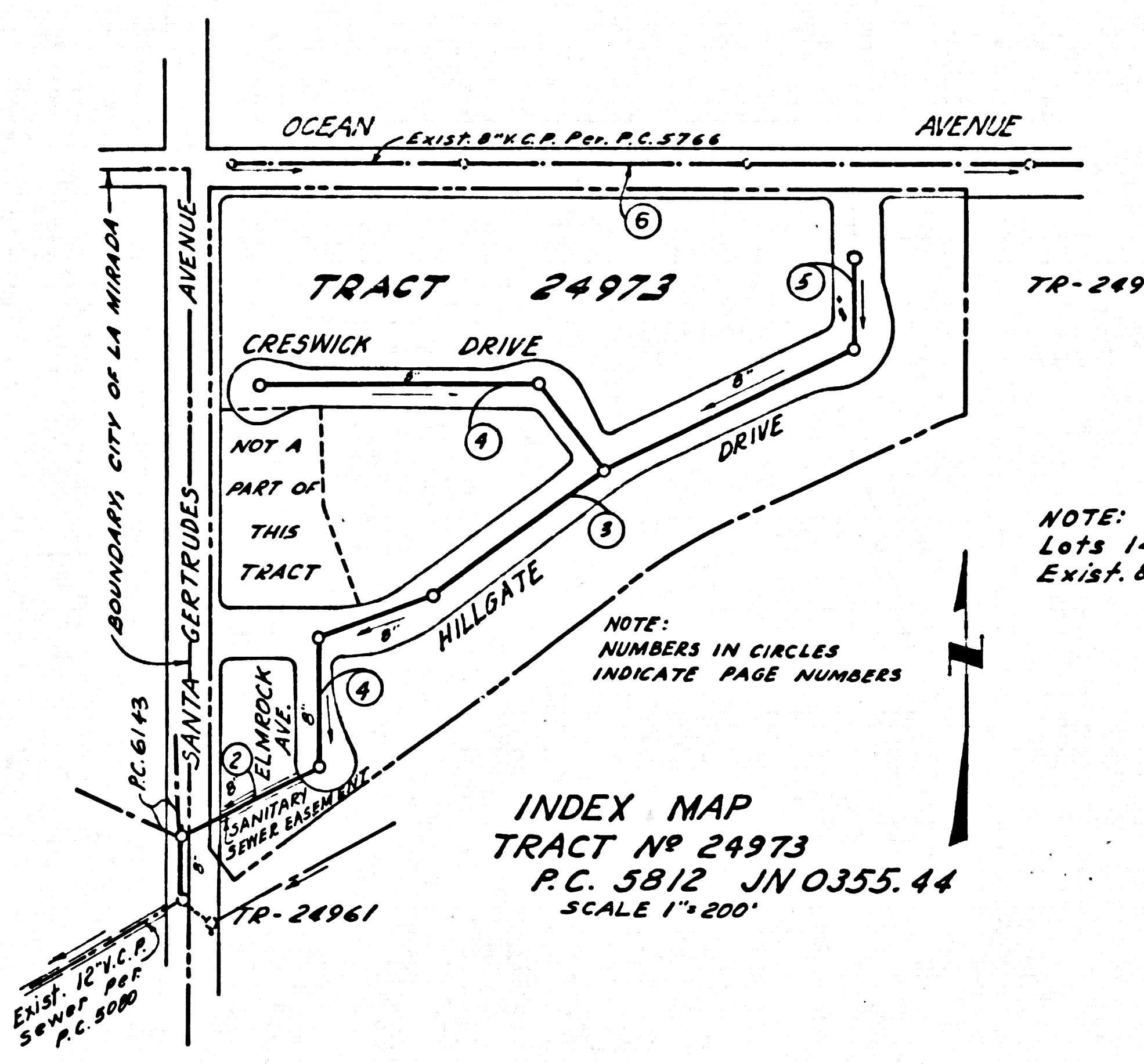
SCALE: VERT. 1" = 4'  
 HORIZ. 1" = 40'  
 NOV. 1960  
 PREPARED IN THE OFFICES OF

**MCINTIRE & QUIROS, INC.**

By: Olan M. Quiros 11/5/60  
 REG. C. E. NO. 9548

FOR LEGEND SEE PLAN NO. S-A-64

30706



**INDEX MAP**  
 TRACT N° 24973  
 P.C. 5812 JN 0355.44  
 SCALE 1" = 200'

NOTE:  
 Lots 14-25 Served By  
 Exist. 8" V.C.P. Sewer P.C. 5766

NOTE:  
 NUMBERS IN CIRCLES  
 INDICATE PAGE NUMBERS

- NOTES:**
- PROVIDE STAKES ON THE PROPERTY LINE OR PROPERTY LINES PRODUCED AT RIGHT ANGLES TO THE SEWER LINE AT THE CENTER LINE OF EACH MANHOLE.
  - NO REPRESENTATIVE OF THE COUNTY ENGINEER WILL SURVEY OR LAY OUT ANY PORTION OF THE WORK.
  - THE OWNER OR HIS AUTHORIZED REPRESENTATIVE SHALL FURNISH THE COUNTY ENGINEER WITH GRADE SHEETS AND STATIONING FOR ALL HOUSE LATERALS AND Y BRANCHES AND SHALL PROVIDE STAKES FOR THEM AT THEIR PROPER LOCATIONS WITH STATIONING PLAINLY MARKED. ANY CHANGE IN LOCATION SHALL BE REQUESTED IN WRITING BY THE OWNER OR HIS REPRESENTATIVE.
  - THE PRIVATE ENGINEER SHALL FURNISH THE HOUSE LATERAL DEPTH AT THE PROPERTY LINE BELOW THE TOP OF CURB ELEVATION FOR EACH HOUSE LATERAL ON THE GRADE SHEET.
  - NO REVISIONS SHALL BE MADE IN THESE PLANS WITHOUT THE APPROVAL OF THE COUNTY ENGINEER.
  - USE STANDARD MANHOLE FRAMES AND COVERS, S-117.
  - USE STANDARD STRENGTH PIPE EXCEPT AS NOTED.
  - USE CEMENT MORTAR OR "WEDGE-LOCK" OR "SPED-SEAL" FOR ALL V.C.P. JOINTS PER SPEC'S, SECS. 36 & 41.
  - RESURFACE ALL TRENCH WITHIN PAVED AREA TO MEET L.A. COUNTY ROAD DEPT. OR CALIF. STATE HIGHWAY REQUIREMENTS IN ACCORDANCE WITH PERMITS.
  - ENCASE FOUR FEET OF SEWER AT POINTS OF INTERFERENCE WITH POLES, CASE III, S-172.
  - HOUSE LATERALS TO BE CONSTRUCTED WITH INVERTS AT PROPERTY LINE 6 FEET BELOW CURB GRADE EXCEPT AS NOTED.
  - ALL STRUCTURES SHALL BE BRICK SEWER STRUCTURES, S-104.
  - FOR ALLOWABLE LEAKAGE TEST USE FORMULA NO. 1, SPEC'S, SEC. 64.
  - THE CONTRACTOR SHALL NOTIFY THE CONSTRUCTION DIVISION BY TELEPHONE, MADISON 9-4747, EXT. 21-531 AT LEAST TWENTY-FOUR HOURS BEFORE STARTING ANY WORK UNDER THIS CONTRACT.
  - THE CONTRACTOR SHALL SATISFY HIMSELF OF ALL SUBSTRUCTURES AND SHALL BE RESPONSIBLE FOR THEIR LOCATION AND MAINTENANCE.
  - NO CONSTRUCTION WILL BE PERMITTED IN FILLED AREAS UNLESS ACCEPTABLE CERTIFICATION IS SUBMITTED TO THE CONSTRUCTION DIVISION OF THE COUNTY ENGINEERS DEPT. THAT COMPACTION IS GREATER THAN 90%.
  - IF COMPACTION IS GREATER THAN 90%, CRADLING OR SPECIAL M.K. BASES ARE NOT REQUIRED. HOWEVER, JOINT COMPACTION MUST BE MAINTAINED FOR ALL JOINTS IN FILLED AREA.
  - IF COMPACTION IS LESS THAN 90%, THE SEWER MUST BE CRADLED AS SHOWN ON PLANS (PAR. 5-9-16.6).
  - STANDARD SPECIFICATIONS DATED OCTOBER, 1960, APPLY IN THE CONSTRUCTION OF THIS PROJECT.

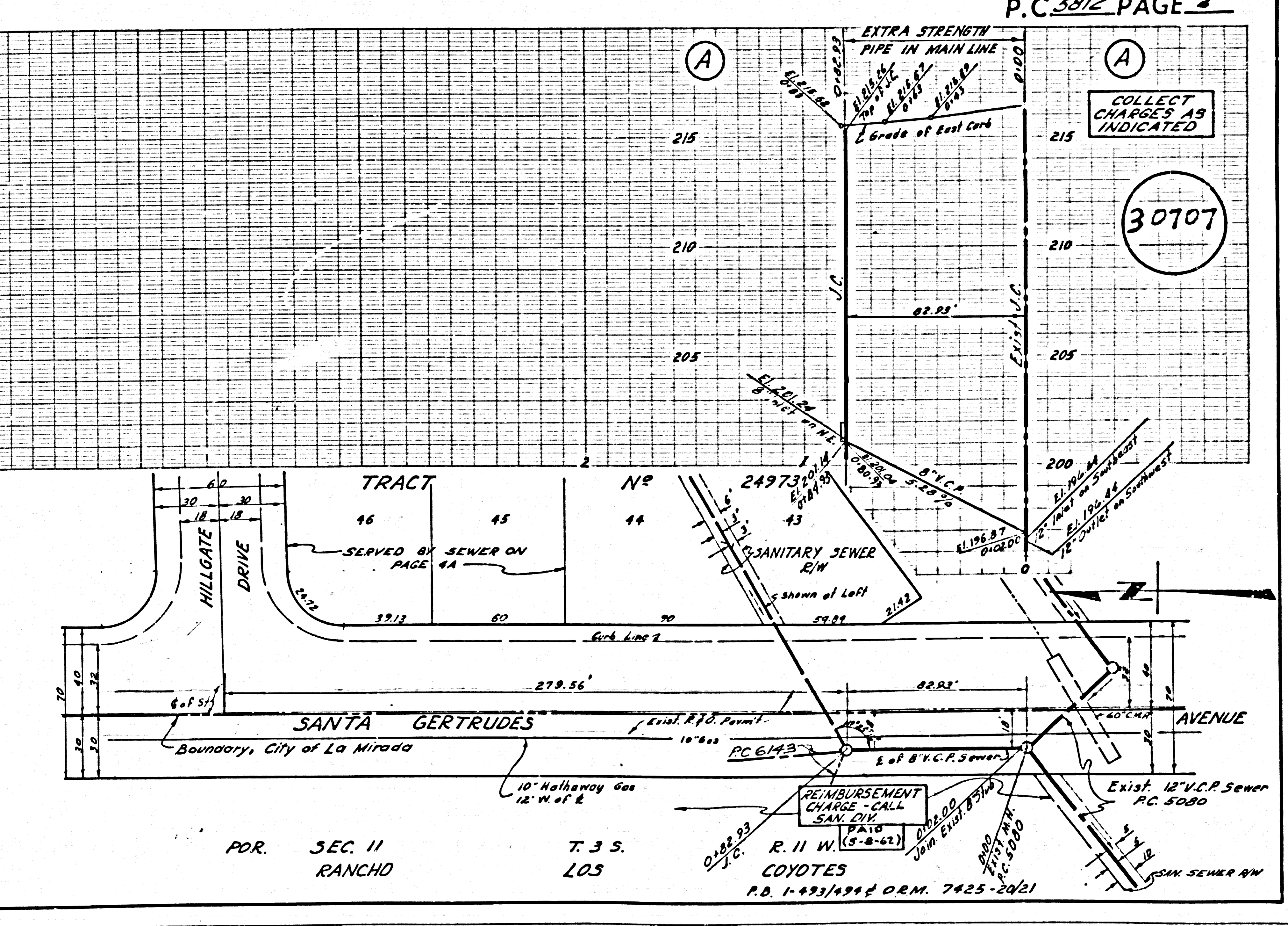
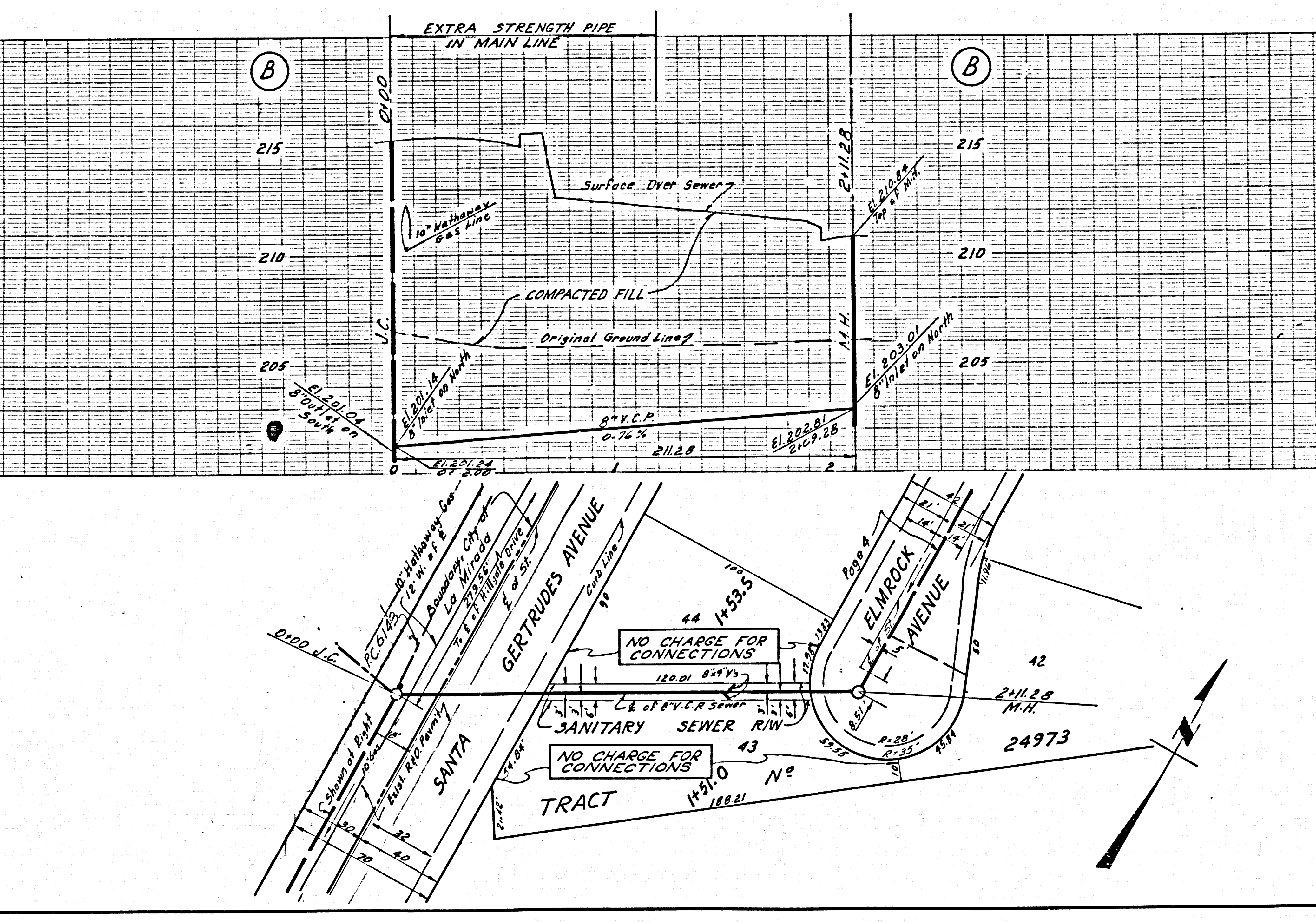
**NOTE:**  
 GRADES TO WHICH THIS IMPROVEMENT IS TO BE CONSTRUCTED ARE SHOWN ON PLANS AND PROFILES. GRADE POINTS FOR TOP OF CURBS, CENTER LINE OF STREETS OR CENTER LINE OF ALLEYS ARE SHOWN BY CIRCLES ON PROFILES. AT ALL POINTS BETWEEN DESIGNATED POINTS THE GRADE SHALL BE ESTABLISHED SO AS TO CONFORM TO A STRAIGHT LINE DRAWN BETWEEN SAID DESIGNATED POINTS.  
 ELEVATIONS ARE IN FEET ABOVE U.S.C. & G.S. SEA LEVEL DATUM OF 1929.  
 THIS DRAWING AND THE DATA HEREON ARE HEREBY MADE A PART OF THE SPECIFICATIONS. WORK SHALL BE CONSTRUCTED ACCORDING TO SPECIFICATIONS ON FILE IN THE OFFICE OF THE COUNTY ENGINEER AND SHALL BE PROSECUTED ONLY IN THE PRESENCE OF THE COUNTY ENGINEER.  
 BEFORE WORK CAN BE STARTED THE CONTRACTOR MUST OBTAIN A PERMIT TO EXCAVATE IN COUNTY STREETS FROM THE L.A. COUNTY ROAD DEPT., DISTRICT OFFICE NO. 4, AND PAY A FEE WITH THE COUNTY ENGINEER ROOM 310 CO. ENGR. BLDG. 108 W. 2ND ST. SUFFICIENT TO COVER THE COST OF CONSTRUCTION INSPECTION AND RECORD PLANS.  
 APPROVAL OF THIS PLAN BY THE COUNTY OF LOS ANGELES DOES NOT CONSTITUTE A REPRESENTATION AS TO THE ACCURACY OF THE LOCATION OR THE EXISTENCE OF ANY UNDERGROUND UTILITIES, PIPE, OR STRUCTURE WITHIN THE LIMITS OF THIS PROJECT. THIS NOTE APPLIES TO ALL PAGES.  
 IF WORK IS TO BE DONE IN A STATE HIGHWAY, A PERMIT MUST BE OBTAINED FROM THE STATE OF CALIFORNIA, DIVISION OF HIGHWAYS, 126 SOUTH SPRING STREET.

**CONNECTION CHARGES**  
 AS INDICATED  
 5-8-61

NO CONNECTIONS FOR THE DISPOSAL OF INDUSTRIAL WASTES SHALL BE MADE TO SEWERS SHOWN ON THESE DRAWINGS WITHOUT WRITTEN PERMISSION FROM THE CHIEF ENGINEER AND GENERAL MANAGER OF THE COUNTY SANITATION DISTRICTS.

**COUNTY OF LOS ANGELES, CALIFORNIA**  
 APPROVED, JOHN A. LAMBIE, COUNTY ENGINEER  
 APPROVED, C. R. COMPTON, CHIEF ENGINEER  
 BY: J. A. Lambie SANITATION ENGINEER  
 BY: C. R. Compton OFFICE ENGINEER  
 CHECKED BY: J. K. Under 5-9-61  
 OFFICE OF COUNTY ENGINEER, REG. C. E. NO. 2306

Submitted By: James L. Esten 5-8-61  
 Los Cerritos Regional Engineer R.C.E. 3871



**P.C. 5812 PAGE 2**

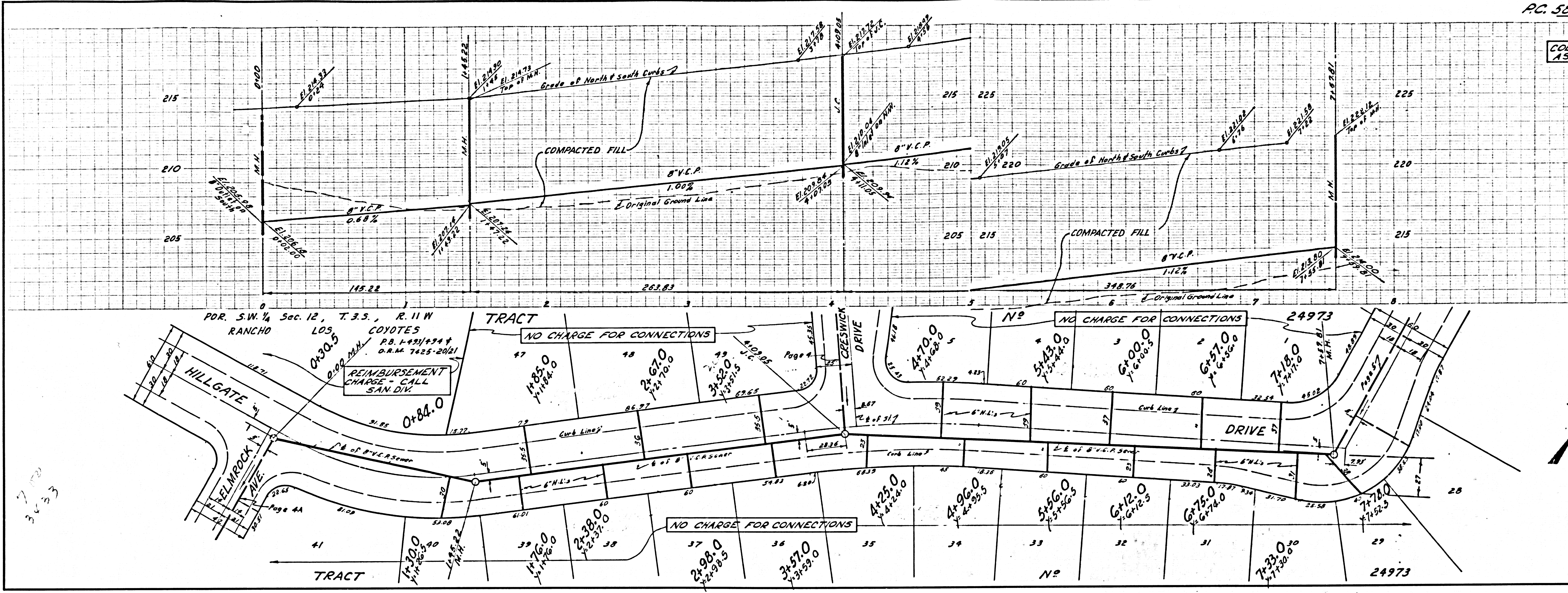
30707

POR. SEC. 11 T. 3 S.  
 RANCHO LOS COYOTES  
 P.D. 4-293/494 & D.R.M. 7425-2421



COLLECT CHARGES AS INDICATED

30708



COLLECT CHARGES AS INDICATED

30709

