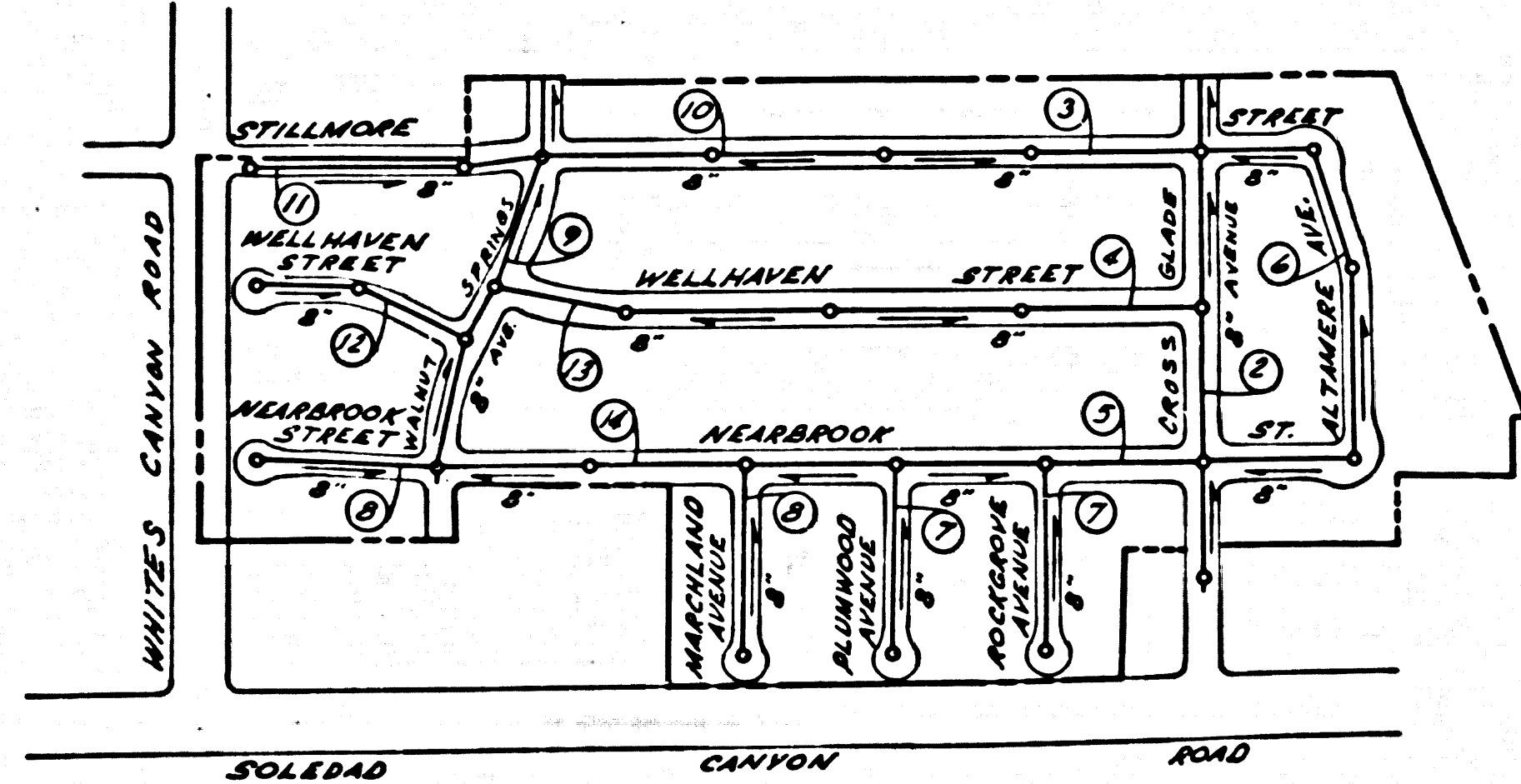


**BENCH MARK:**

STD. U.S.G.G.S. BRASS DISK SET IN A CONCRETE MON. & STAMPED D-487-1955 LOCATED 2.3 MILE N'LY OF INTERSECTION OF CAMP PLINY ROAD AT SOLEDAD CANYON RD. AT THE INTERSECTION OF CAMP PLINY ROAD AND A PAVED ROAD LEADING TO THE G.S. RANCH AIRPORT AT N.E. CORNER OF INTERSECTION AND NEXT TO A WHITE WITNESS POST. ROAD DEPARTMENT ELEVATION = 1344.432



INDEX MAP  
TRACT No. 25924  
R.G. 5816 SCALE: 1"=400'

NOTE: \*  
NUMBERS IN CIRCLES INDICATE PAGE NUMBERS.

REVISION APPROVED  
PERMITTING THE USE OF CEMENT  
MORTAR JOINTS.

H. M. Spick Jan 3, 1961  
C.E. # 3687.

NO CHARGE FOR  
CONNECTIONS  
Monday, Feb 14, 1961

**NEWHALL BLDG. DIST. NO. 8.2**

**NOTES:**

- 1. PROVIDE STAKES ON THE PROPERTY LINE OR PROPERTY LINES PRODUCED AT RIGHT ANGLES TO THE SEWER LINE AT THE CENTER LINE OF EACH MANHOLE.
- 2. NO REPRESENTATIVE OF THE COUNTY ENGINEER WILL SURVEY OR LAY OUT ANY PORTION OF THE WORK.
- 3. THE OWNER OR HIS AUTHORIZED REPRESENTATIVE SHALL FURNISH THE COUNTY ENGINEER WITH GRADE SHEETS AND STATIONING FOR ALL HOUSE LATERALS AND Y BRANCHES AND SHALL PROVIDE STAKES FOR THEM AT THEIR PROPER LOCATIONS WITH STATIONING PLAINLY MARKED. ANY CHANGE IN LOCATION SHALL BE REQUESTED IN WRITING BY THE OWNER OR HIS REPRESENTATIVE.
- 4. THE PRIVATE ENGINEER SHALL FURNISH THE HOUSE LATERAL DEPTH AT THE PROPERTY LINE BELOW THE TOP OF CURB ELEVATION FOR EACH HOUSE LATERAL ON THE GRADE SHEET.
- 5. NO REVISIONS SHALL BE MADE IN THESE PLANS WITHOUT THE APPROVAL OF THE COUNTY ENGINEER.
- 6. USE STANDARD MANHOLE FRAMES AND COVERS, S-117.
- 7. USE STANDARD STRENGTH PIPE EXCEPT AS NOTED.
- 8. USE CEMENT MORTAR OR "WEDGE-LOCK" OR "SPEED-SEAL" FOR ALL V.C.P. JOINTS PER SPECS, SECS. 34 & 41.
- 9. RESURFACE ALL TRENCH WITHIN PAVED AREA TO MEET L.A. COUNTY ROAD DEPT. OR CALIF. STATE HIGHWAY REQUIREMENTS IN ACCORDANCE WITH PERMITS.
- 10. EXCAVE FOUR FEET OF SEWER AT POINTS OF INTERFERENCE WITH POLES, CASE III, S-117.
- 11. HOUSE LATERALS TO BE CONSTRUCTED WITH INVERTS AT PROPERTY LINE 6 FEET BELOW CURB GRADE EXCEPT AS NOTED.
- 12. ALL STRUCTURES SHALL BE BRICK SEWER STRUCTURES, S-104.
- 13. FOR ALLOWABLE LEAKAGE TEST USE FORMULA NO. 1, SPECS, SEC. 34.
- 14. MANHOLE TOPS IN UNIMPROVED RIGHTS-OF-WAY TO BE SIX INCHES ABOVE FINISHED GRADE.
- 15. THE CONTRACTOR SHALL NOTIFY THE CONSTRUCTION & STORM DRAIN DIVISION BY TELEPHONE, MADISON 9-4747, EXT. 342, AT LEAST TWENTY-FOUR HOURS BEFORE STARTING ANY WORK UNDER THIS CONTRACT.
- 16. SPEC. DATED OCTOBER 10, 1960 TO BE USED IN THE CONSTRUCTION OF THIS PROJECT.

PROFILE ALIGNMENT AND GRADE OF P.C. 5816  
SANITARY SEWERS PAGE 1  
CONSTRUCTED IN J.N. 0355.48

TRACT No. 25924  
N.B. 667, 93-97

PRIVATE CONTRACT NO. 5816

W.S. 62

7 SHEETS; 14 PAGES

SCALE: VERT. 1"=4' MARCH, 1961  
HORIZ. 1"=40' PREPARED IN THE OFFICES OF

MCINTIRE & QUIROS, INC.

By: *Jim Murray* 2/14/61  
REG./C. E. NO. 10548

FOR LEGEND SEE PLAN NO. S-A-64

30982

NOTE:  
GRADES TO WHICH THIS IMPROVEMENT IS TO BE CONSTRUCTED ARE SHOWN ON PLANS AND PROFILES. GRADE POINTS FOR TOP OF CURBS, CENTER LINE OF STREETS, OR CENTER LINE OF ALLEYS ARE SHOWN BY CIRCLES ON PROFILES AT ALL POINTS BETWEEN DESIGNATED POINTS. THE GRADE SHALL BE ESTABLISHED SO AS TO CONFORM TO A STRAIGHT LINE DRAWN BETWEEN SAID DESIGNATED POINTS.  
ELEVATIONS ARE IN FEET ABOVE U.S.C. & G.S. SEA LEVEL DATUM OF 1929.  
THIS DRAWING AND THE DATA HEREON ARE HEREBY MADE A PART OF THE SPECIFICATIONS.  
WORK SHALL BE CONSTRUCTED ACCORDING TO SPECIFICATIONS ON FILE IN THE OFFICE OF THE COUNTY ENGINEER AND SHALL BE PROSECUTED ONLY IN THE PRESENCE OF THE COUNTY ENGINEER.  
BEFORE WORK CAN BE STARTED, THE CONTRACTOR MUST OBTAIN A PERMIT TO EXCAVATE IN COUNTY STREETS FROM THE L.A. COUNTY ROAD DIST. DISTRICT OFFICE NO. 1 AND PAY A FEE WITH THE COUNTY ENGINEER.  
FOOTING 12" DIA. 2nd STREET SUFFICIENT TO COVER THE COST OF CONSTRUCTION INSPECTION AND RECORD PLANS.  
APPROVAL OF THIS PLAN BY THE COUNTY OF LOS ANGELES DOES NOT CONSTITUTE A REPRESENTATION AS TO THE ACCURACY OF THE LOCATION OF OR THE EXISTENCE OR NON-EXISTENCE OF ANY UNDERGROUND UTILITY PIPE OR STRUCTURE WITHIN THE LIMITS OF THIS PROJECT. THIS NOTE APPLIES TO ALL PAGES.  
IF WORK IS TO BE DONE IN A STATE HIGHWAY, A PERMIT MUST BE OBTAINED FROM THE STATE OF CALIFORNIA, DIVISION OF HIGHWAYS, 120 SOUTH SPRING STREET.

COUNTY OF LOS ANGELES, CALIFORNIA

APPROVED, JOHN A. LAMBIE, COUNTY ENGINEER APPROVED, C.R. COMPTON, CHIEF ENGINEER

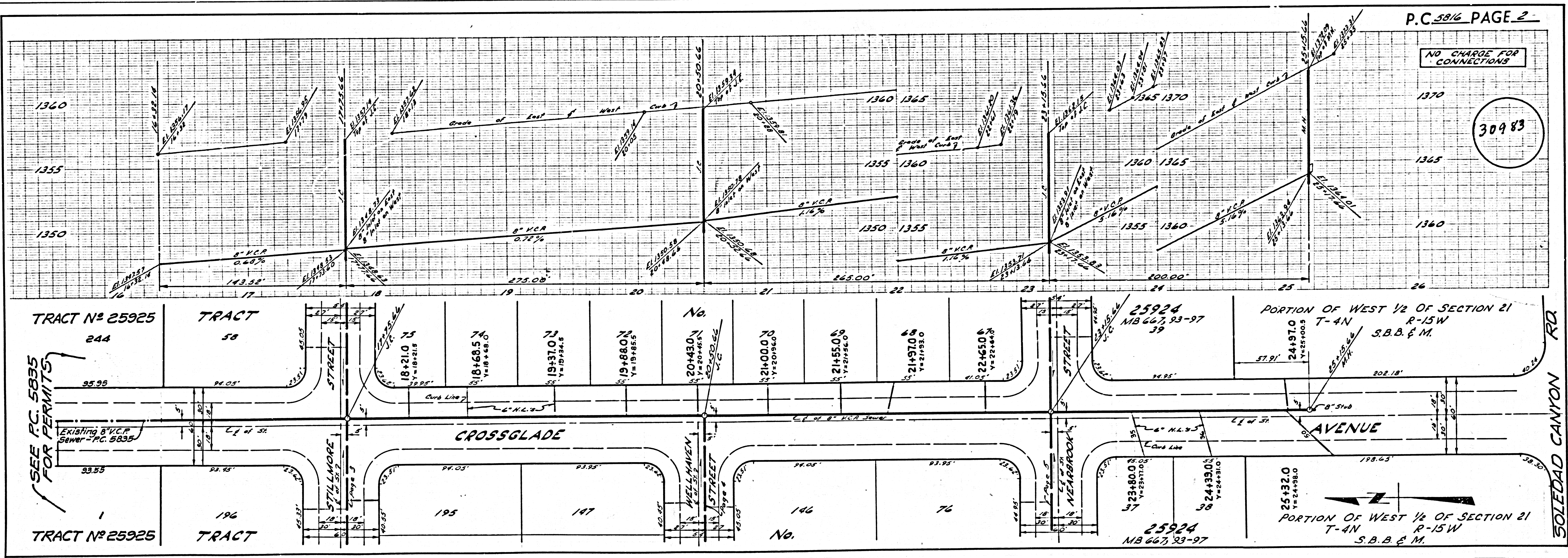
CO. SAN. DIST. NO. 26

BY: *C.E. Spick* ASST. SANITATION ENGINEER BY: *A. Posthumus* OFFICE ENGINEER

CHECKED BY: *S.K. Onda* 4-30-61

OFFICE OF COUNTY ENGINEER, REG. C. E. NO. 2406

NO CONNECTIONS FOR THE DISPOSAL OF INDUSTRIAL WASTES SHALL BE MADE TO SEWERS SHOWN ON THESE DRAWINGS WITHOUT WRITTEN PERMISSION FROM THE CHIEF ENGINEER AND GENERAL MANAGER OF THE COUNTY SANITATION DISTRICTS.  
RECOMMENDED *H. M. Spick*  
ANTELOPE VALLEY REGIONAL ENGINEER  
APPROVAL BY COUNTY SANITATION DISTRICT GIVEN WITH THE UNDERSTANDING THAT SEWERS WILL NOT BE USED UNTIL OUTLET SEWERS ARE APPROVED BY COUNTY SANITATION DISTRICT AND NOT UNTIL ALL THE AREA IS WITHIN COUNTY SANITATION DISTRICT NO. 26.



P.C. 5816 PAGE 2

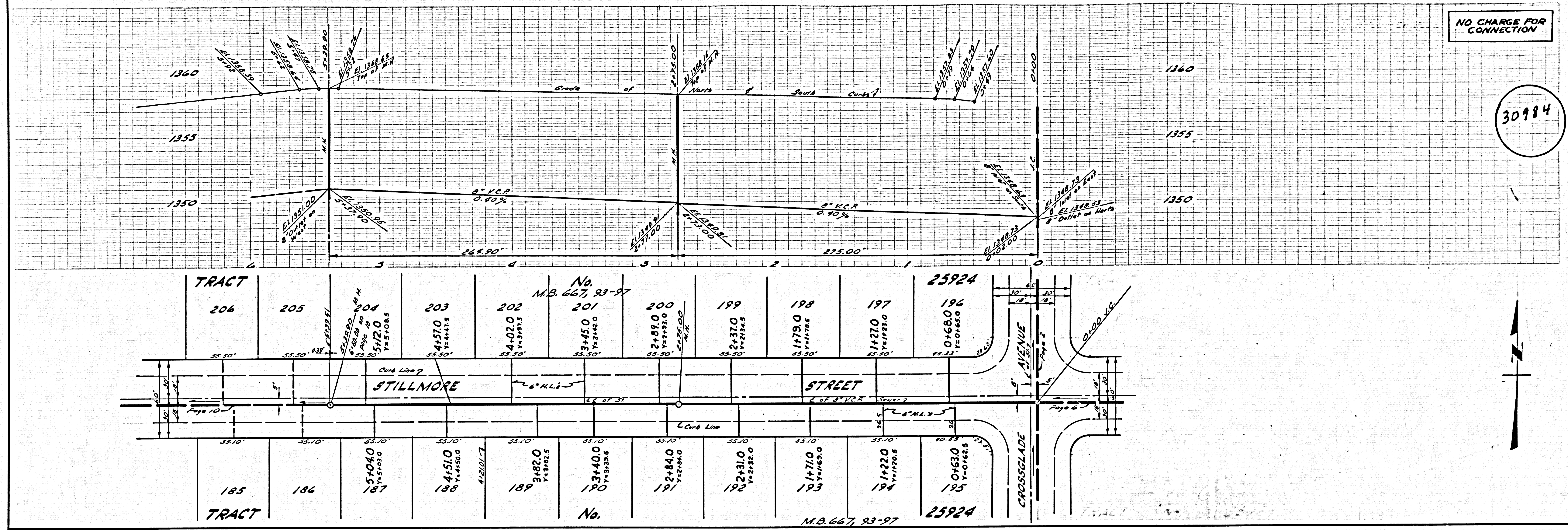
NO CHARGE FOR  
CONNECTIONS

30983

SEE P.C. 5835  
FOR PERMITS

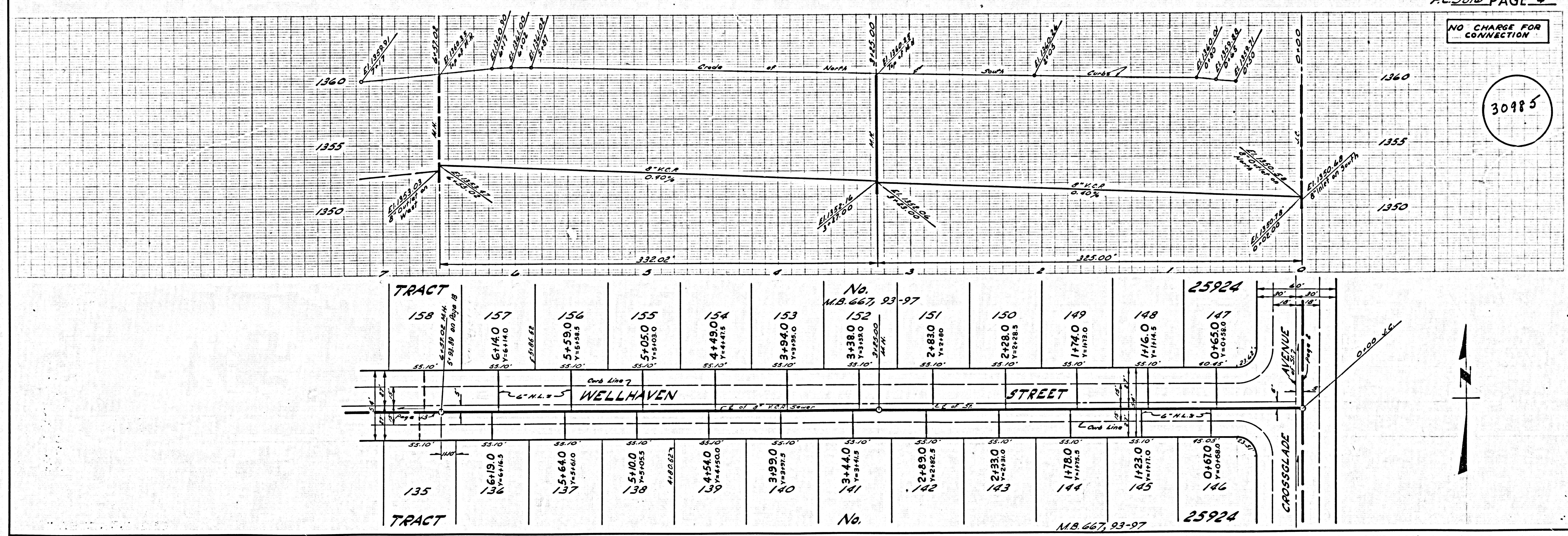
NO CHARGE FOR CONNECTION

30984



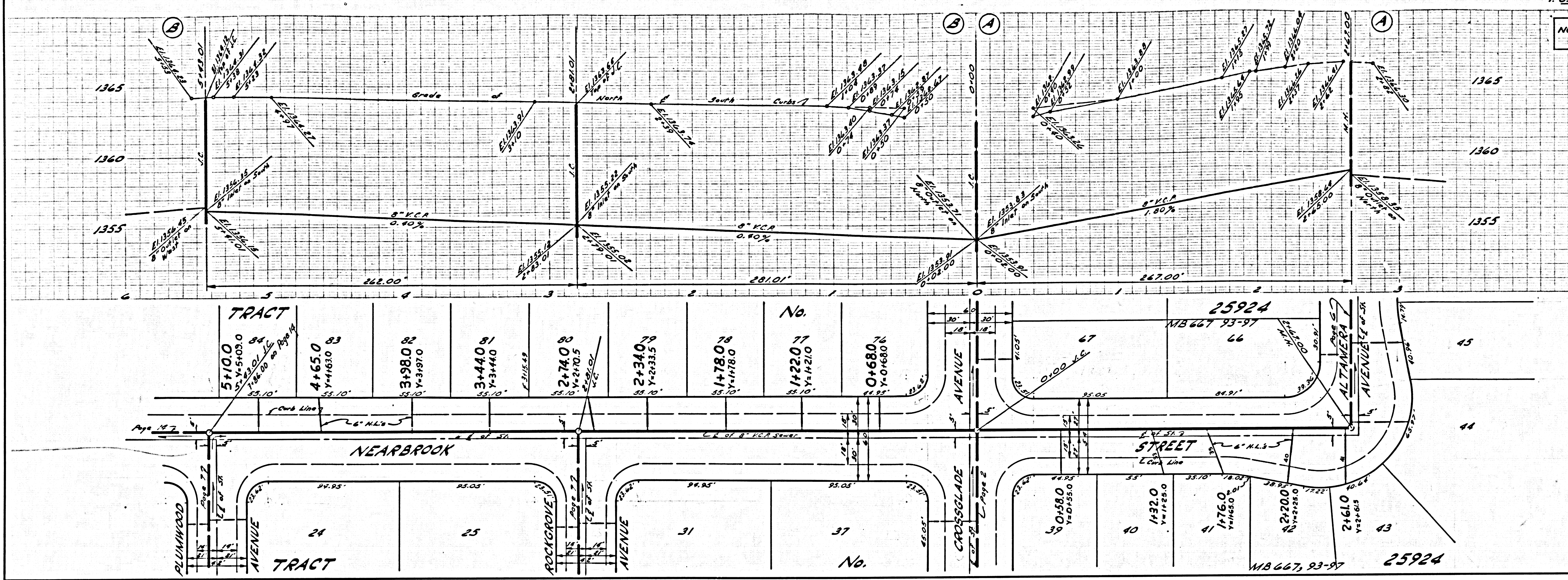
NO CHARGE FOR CONNECTION

30985



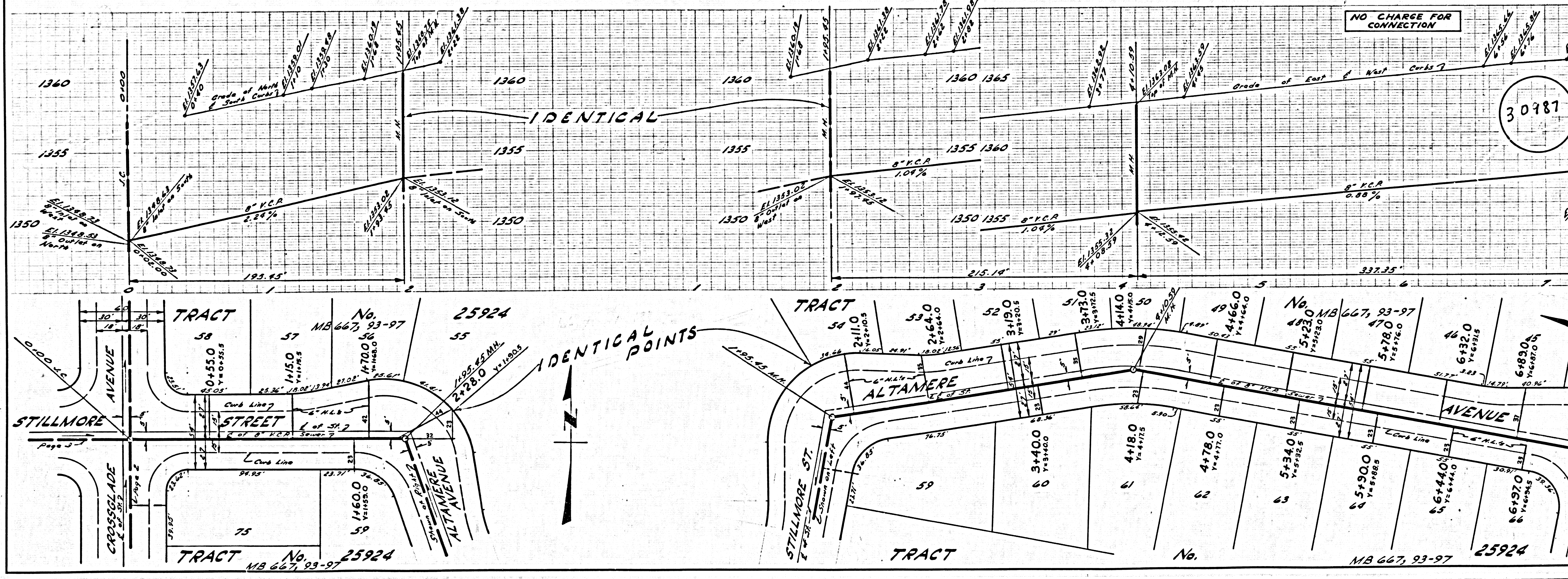
NO CHARGE FOR CONNECTION

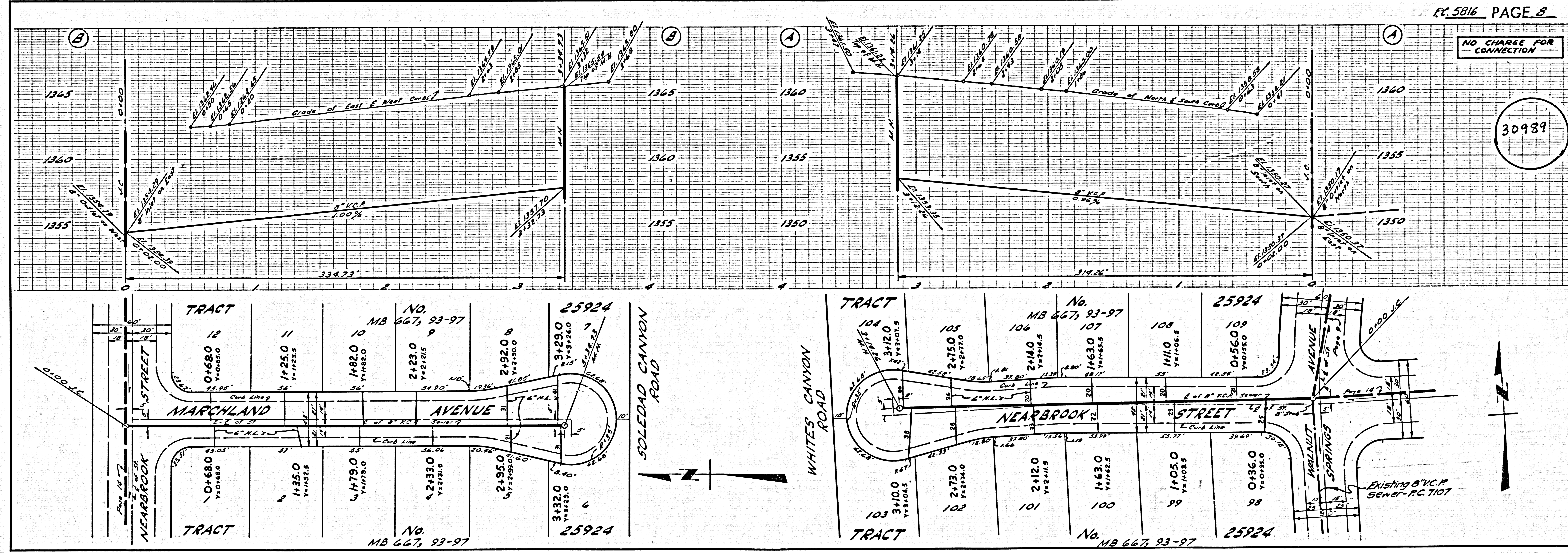
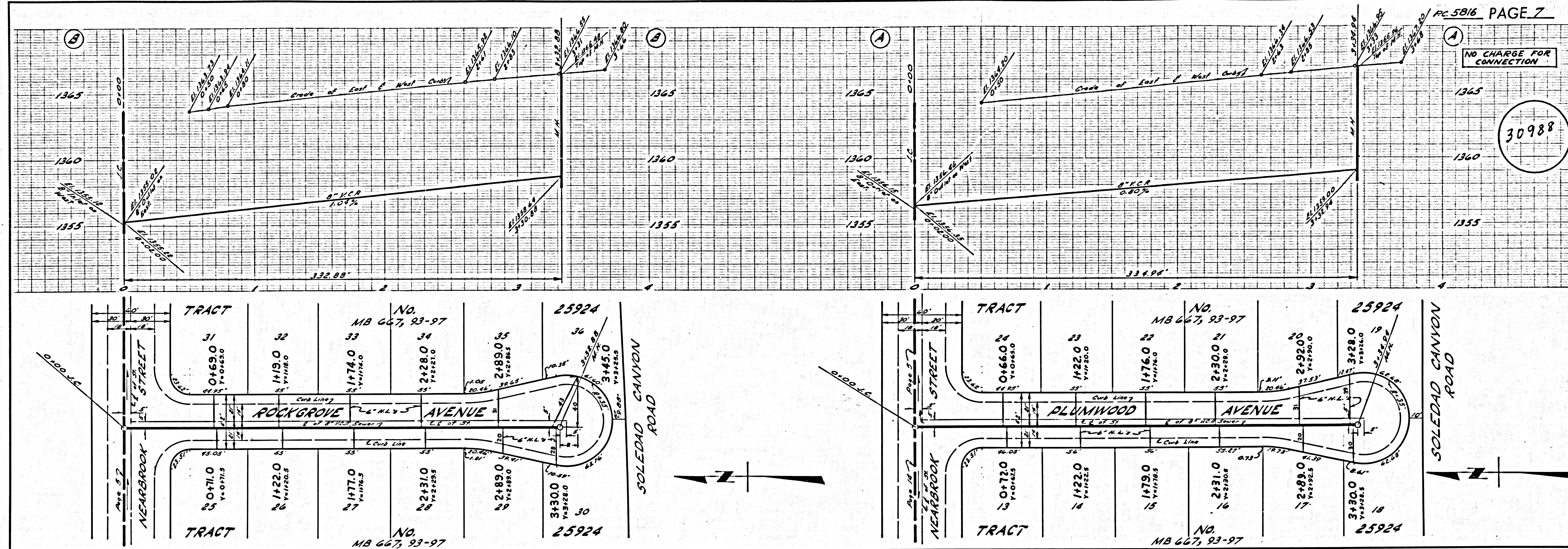
30986



NO CHARGE FOR CONNECTION

30987

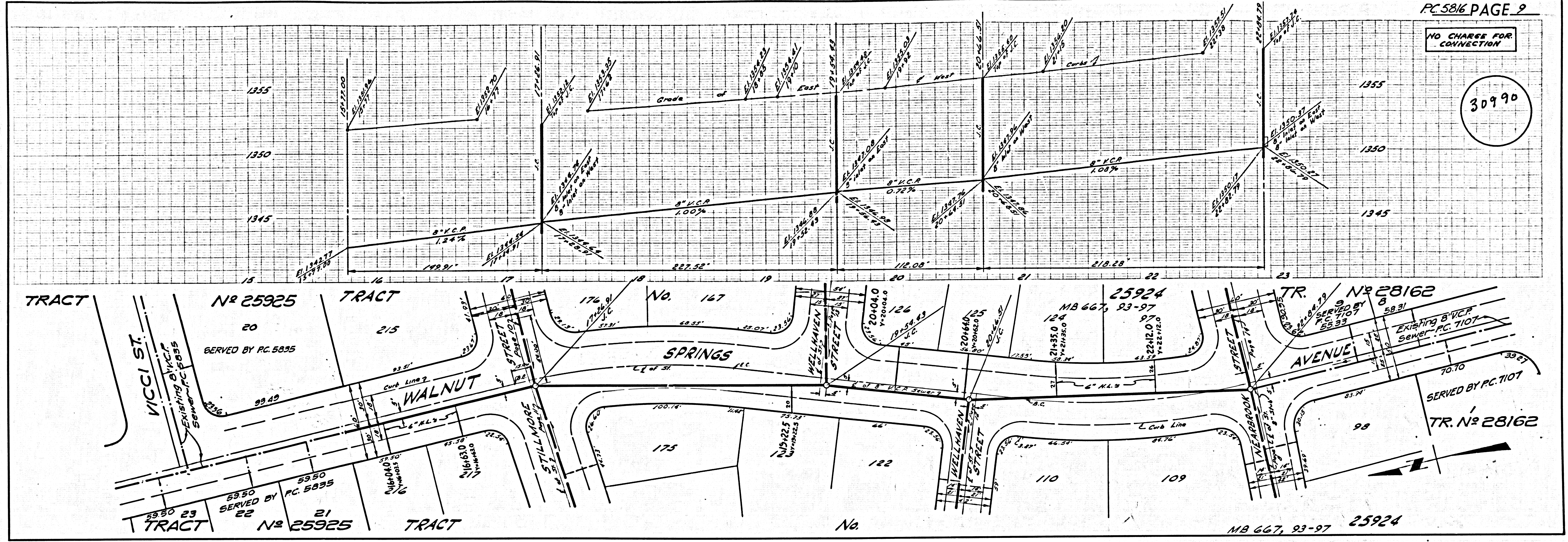




BC-281E

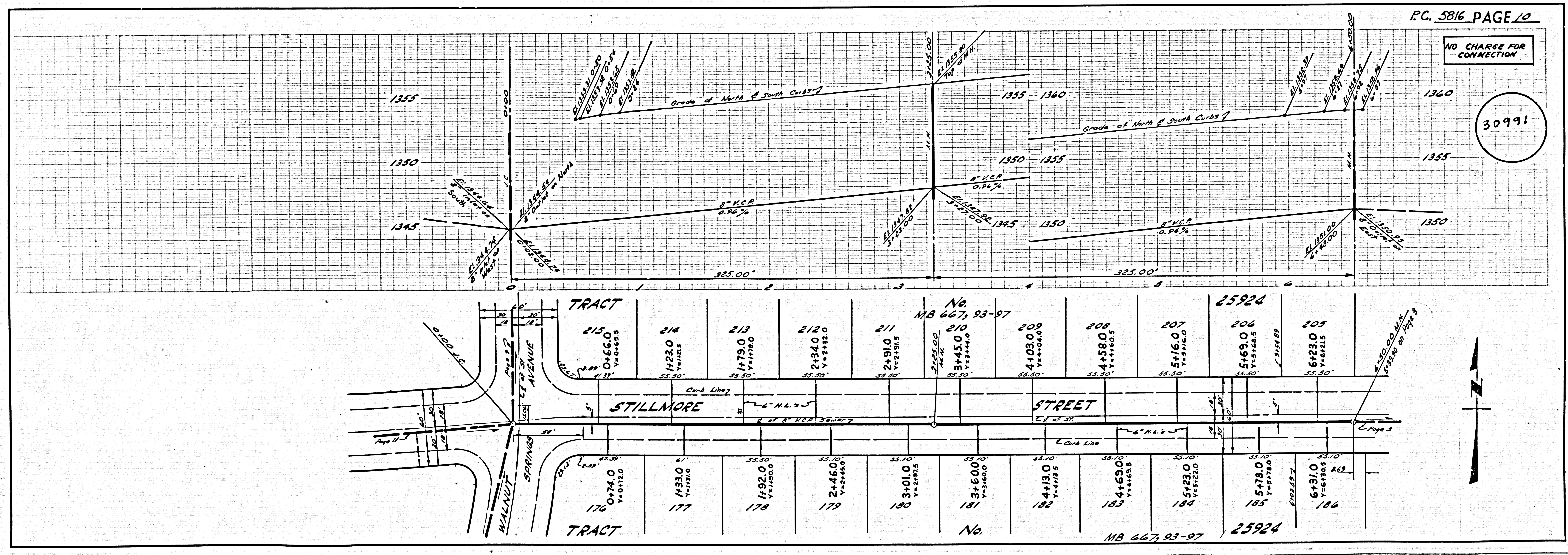
NO CHARGE FOR CONNECTION

30990



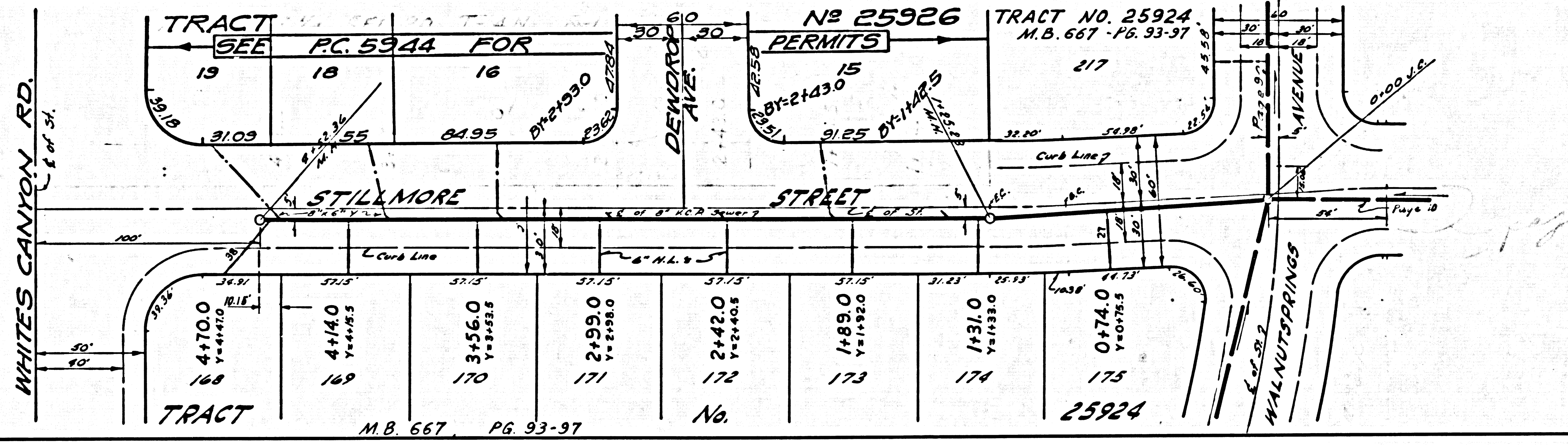
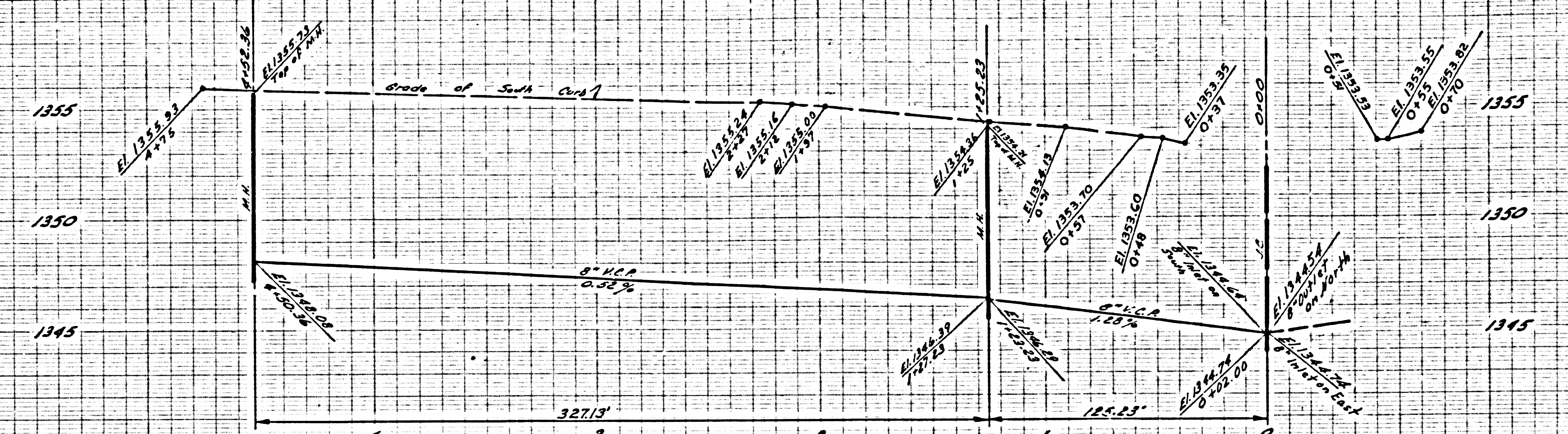
NO CHARGE FOR CONNECTION

30991



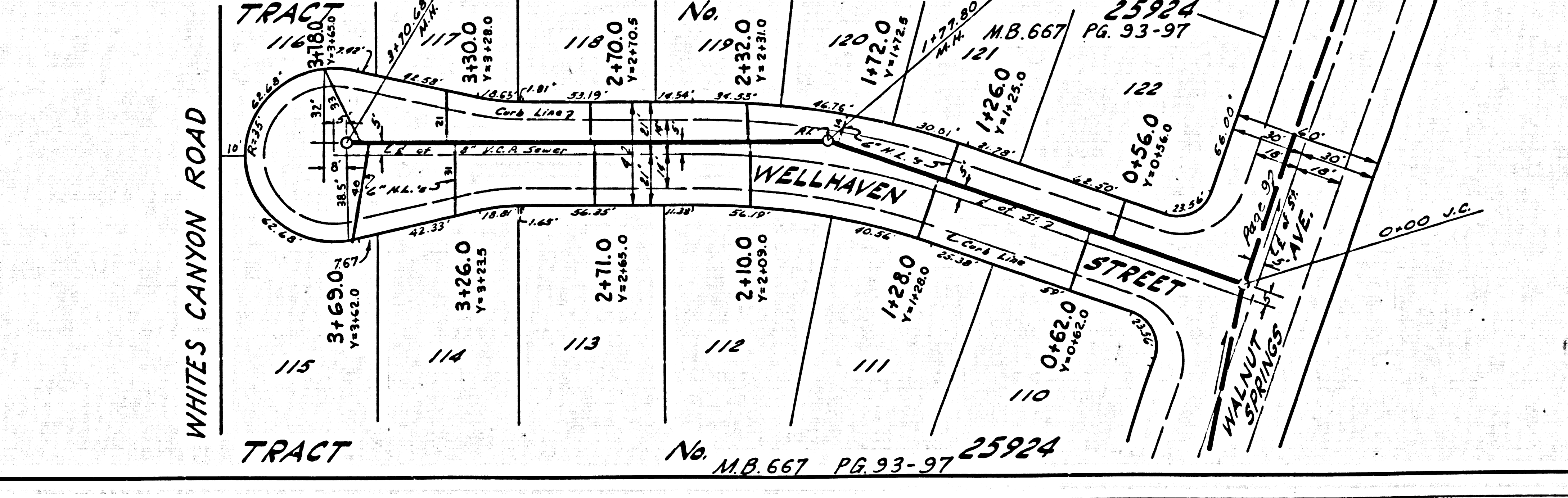
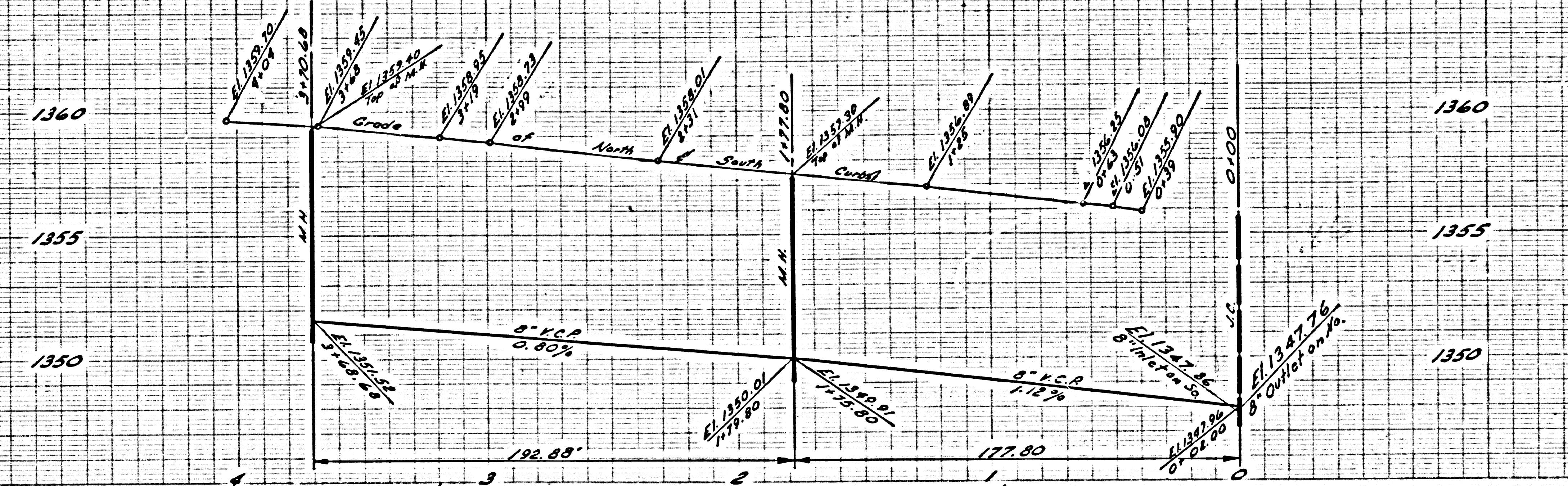
NO CHARGE FOR CONNECTION

30992



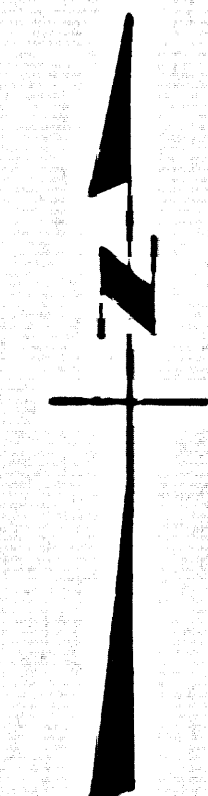
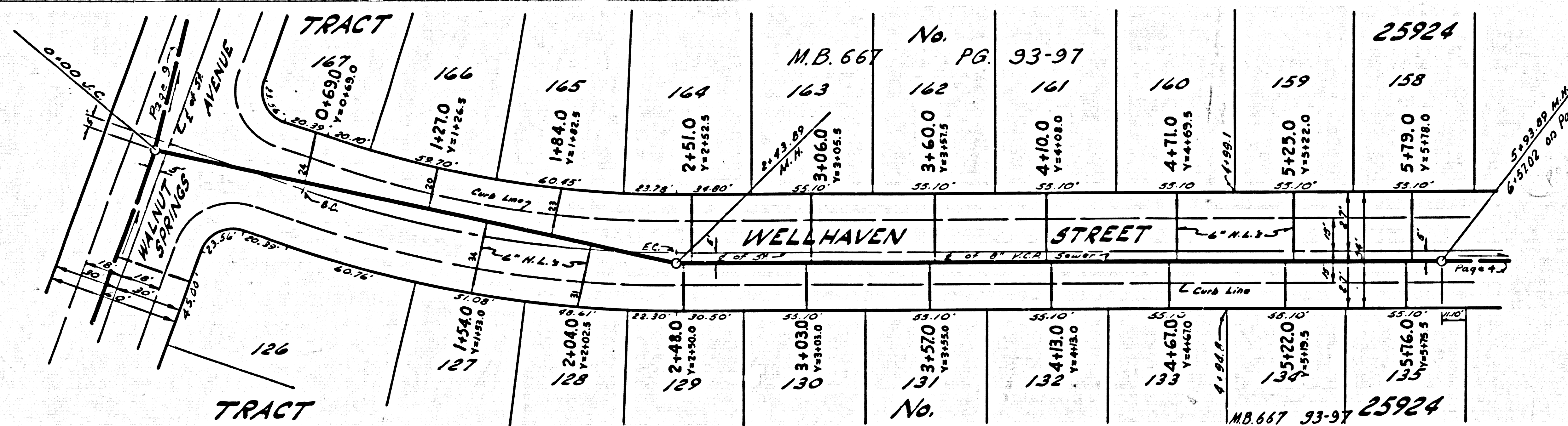
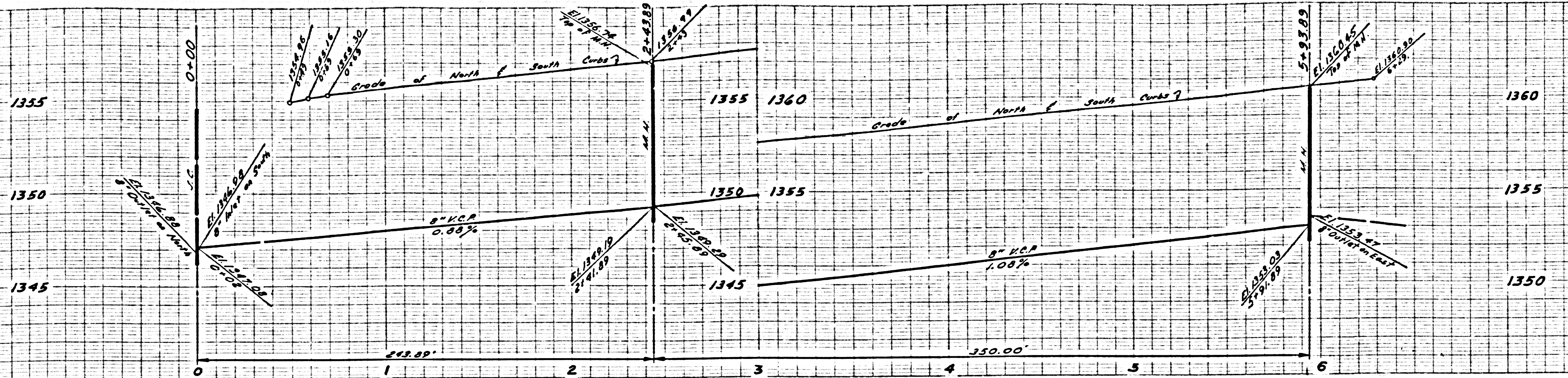
NO CHARGE FOR CONNECTION

30993



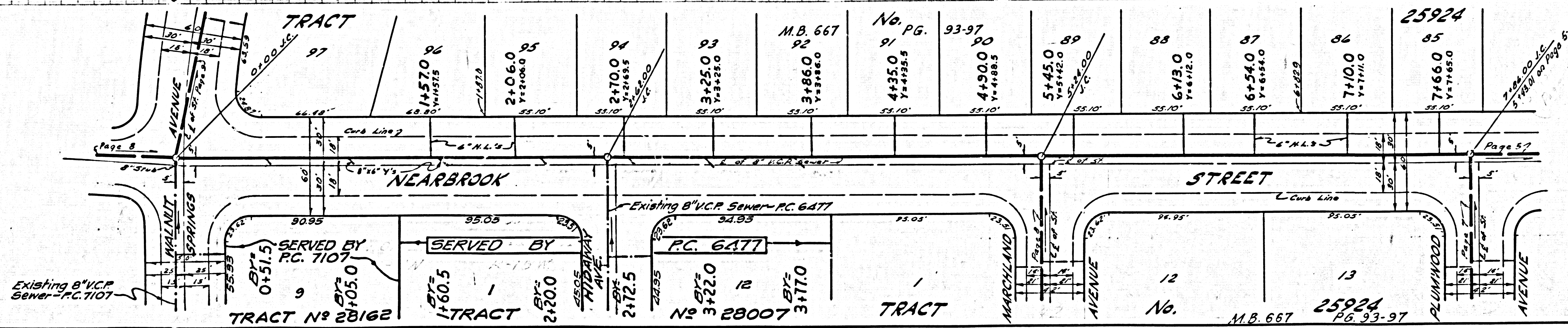
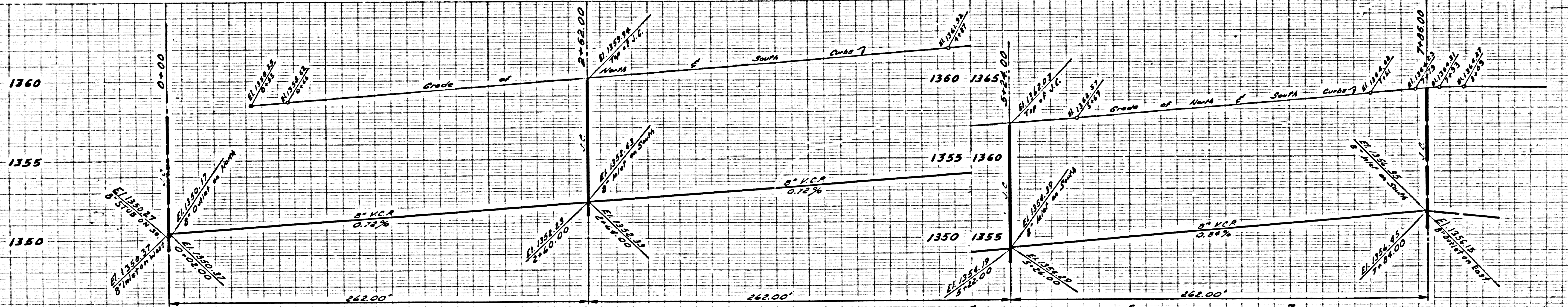
NO CHARGE FOR CONNECTION

30994



NO CHARGE FOR CONNECTION

30995



PC 2812