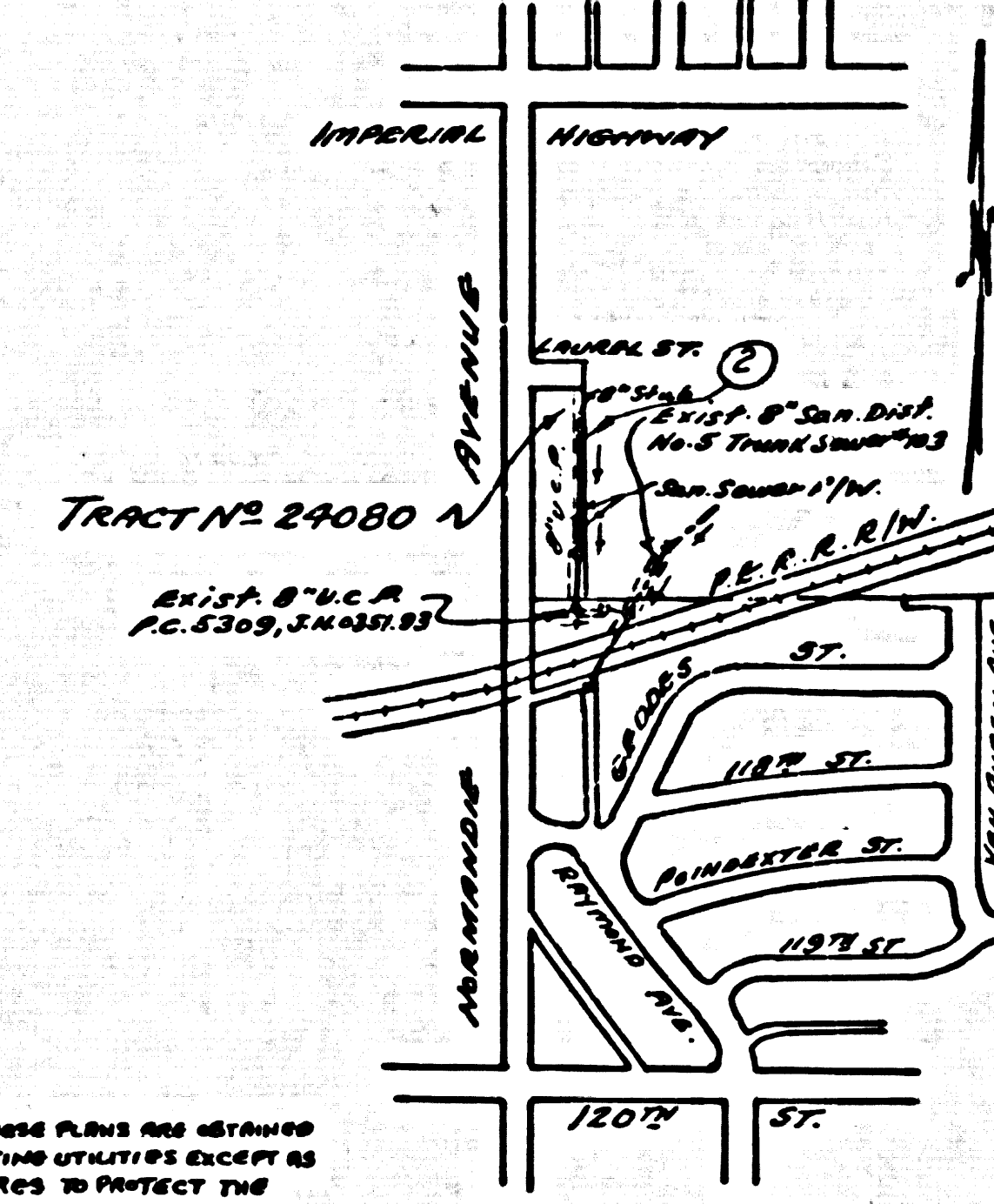


DOUBLE SCALE
LENNOX BLDG. DIST. NO. 7

PROFILE ALIGNMENT AND GRADE OF P.C. 5821
SANITARY SEWERS PAGE 1
TO BE CONSTRUCTED IN J.N. 0355.53

BENCH MARK: SY 4431
L.A. County Rd Dept. Mon. in wall dn 8" at or near the center
line Int. of Imperial H'wy. and Normandie Ave. (Use E. cor.)
Watts Quad. 1955 Adj. ELEV. 200.538



INDEX MAP
SCALE: 1" = 600'
P.C. 5821
TRACT NO. 24080

- NOTES:
1. PROVIDE STAKES ON THE PROPERTY LINE OR PROPERTY LINES PRODUCED AT RIGHT ANGLES TO THE SEWER LINE AT THE CENTER LINE OF EACH MANHOLE.
 2. NO REPRESENTATIVE OF THE COUNTY ENGINEER WILL SURVEY OR LAY OUT ANY PORTION OF THE WORK.
 3. THE "PROPERTY OWNER" SHALL FURNISH THE COUNTY ENGINEER WITH GRADE SHEETS AND STATIONING FOR ALL HOUSE LATERALS AND Y BRANCHES AND SHALL PROVIDE STAKES FOR THEM AT THEIR PROPER LOCATIONS WITH STATIONING PLAINLY MARKED. ALL HOUSE LATERALS SHALL BE CONSTRUCTED IN A STRAIGHT LINE UNLESS OTHERWISE SPECIFIED BY THE COUNTY ENGINEER. ANY CHANGES IN ALIGNMENT SHALL BE REQUESTED IN WRITING BY THE PROPERTY OWNER.
 4. THE PRIVATE ENGINEER SHALL FURNISH THE HOUSE LATERAL DEPTH AT THE PROPERTY LINE BELOW THE TOP OF CURB ELEVATION FOR EACH HOUSE LATERAL ON THE GRADE SHEET.
 5. NO REVISIONS SHALL BE MADE IN THESE PLANS WITHOUT THE APPROVAL OF THE COUNTY ENGINEER.
 6. USE STANDARD MANHOLE FRAMES AND COVERS, S-17.
 7. USE STANDARD STRENGTH PIPE, ALL PIPE IS STANDARD DEPTH.
 8. USE MECHANICAL CURVE DESIGN JOINTS FOR ALL V.C.P. JOINTS PER SPECS. SECT. 34, 40 & 49.
 9. REVISIONS SHALL BE MADE BY THE COUNTY ENGINEER OR HIS REPRESENTATIVE. ANY CHANGES IN ALIGNMENT SHALL BE REQUESTED IN WRITING BY THE PROPERTY OWNER.
 10. ENCASE FOUR FEET OF SEWER AT POINTS OF INTERFERENCE WITH POLES, CASE III, S-172.
 11. HOUSE LATERALS TO BE CONSTRUCTED WITH INTERFERENCE AT PROPERTY LINE - FEET BELOW CURB GRADE - PER SPEC. S-172.
 12. ALL STRUCTURES SHALL BE BRICK SEWER STRUCTURES, S-104, READY CONCRETE R/W'S PER S-154 OR S-173 MAY BE USED IN ALL STRUCTURES IN LOCATIONS PERMITTED BY THE COUNTY ENGINEER.
 13. FOR ALLOWABLE LEAKAGE TEST USE FORMULA NO. 2, SPEC. S, SEC. 54.
 14. MANHOLE TOPS IN UNIMPROVED RIGHTS-OF-WAY TO BE LEVEL WITH FINISHED GRADE.
 15. THE CONTRACTOR SHALL NOTIFY THE CONSTRUCTION DIVISION BY TELEPHONE, MADISON 9-4747, AT LEAST TWENTY-FOUR HOURS BEFORE STARTING ANY WORK UNDER THIS CONTRACT.
 16. STANDARD SPECIFICATIONS DATED MAY 25, 1962 APPLY TO THE CONSTRUCTION ON THIS PROJECT.
 17. IF, DURING THE COURSE OF CONSTRUCTION, IT IS DETERMINED THAT THERE IS LESS THAN FOUR FEET OF COVER OVER THE TOP OF A MAIN LINE OR HOUSE LATERAL, V.C.P. SEWER WHICH IS NOT OBSERVED ON THE PLANS, THE PIPE SHALL BE ENCASED PER S-172, CASE III UNLESS OTHERWISE APPROVED BY THE COUNTY ENGINEER.
 18. ALL STATE AND LOCAL TRENCH SAFETY ORDERS WILL BE RIGIDLY ENFORCED.
- NO CONNECTIONS FOR THE DISPOSAL OF INDUSTRIAL WASTES SHALL BE MADE TO SEWERS SHOWN ON THESE DRAWINGS WITHOUT WRITTEN PERMISSION FROM THE CHIEF ENGINEER AND GENERAL MANAGER OF THE COUNTY SANITATION DISTRICTS.

37835

W.S. 26
1 SHEET ; 2 PAGES
SCALE: VERT. 1" = 6'
HORIZ. 1" = 40'
MARCH, 1961
PREPARED IN THE OFFICES OF
GLEN ROOD
Compton, California
By: *Glen Rood*
REG. C. E. NO. 2093

FOR LEGEND SEE PLAN NO. S-A-64

NOTE:
GRADES TO WHICH THIS IMPROVEMENT IS TO BE CONSTRUCTED ARE SHOWN ON PLANS AND PROFILES. GRADE POINTS FOR TOP OF CURB, CENTER LINE OF STREETS OR CENTER LINE OF ALLEYS ARE SHOWN BY CIRCLES ON PROFILES AT ALL POINTS BETWEEN DESIGNATED POINTS. THE GRADE SHALL BE ESTABLISHED SO AS TO CONFORM TO A STRAIGHT LINE DRAWN BETWEEN SAID DESIGNATED POINTS.
ELEVATIONS ARE IN FEET ABOVE U.S.C. & G.S. SEA LEVEL DATUM OF 1929.
THIS DRAWING AND THE DATA HEREON ARE HEREBY MADE A PART OF THE SPECIFICATIONS AND SHALL BE PROSECUTED ONLY IN THE PRESENCE OF THE COUNTY ENGINEER.
BEFORE WORK CAN BE STARTED THE CONTRACTOR MUST OBTAIN A PERMIT TO EXCAVATE IN COUNTY STREETS FROM THE L.A. COUNTY ROAD DEPT., DISTRICT OFFICE NO. 3, AND FROM THE COUNTY ENGINEER, ROOM 310, COUNTY ENGINEER'S BLDG., 400 NORTH 2ND ST., SUFFICIENT TO COVER THE COST OF CONSTRUCTION INSPECTION AND RECORD PLANS.
APPROVAL OF THIS PLAN BY THE COUNTY OF LOS ANGELES DOES NOT CONSTITUTE A REPRESENTATION AS TO THE ACCURACY OF THE LOCATION OF OR THE EXISTENCE OR NON-EXISTENCE OF ANY UNDERGROUND UTILITY PIPE, OR STRUCTURE WITHIN THE LIMITS OF THIS PROJECT. THIS NOTE APPLIES TO ALL PAGES.
IF WORK IS TO BE DONE IN A STATE HIGHWAY, A PERMIT MUST BE OBTAINED FROM THE STATE OF CALIFORNIA, DIVISION OF HIGHWAYS, 128 SOUTH SPRING STREET.

COUNTY OF LOS ANGELES, CALIFORNIA

APPROVED, JOHN A. LAMBIE, COUNTY ENGINEER APPROVED, C. A. Cameron, CHIEF ENGINEER
CO. SAN. DIST. NO. 5

By: *C. E. Priddy* By: *A. C. Williams*
San. Engr. Office Engr.

CHECKED BY: *Alv. Drake* 4-21-61
OFFICE OF COUNTY ENGINEER, REG. C. E. NO. 9406

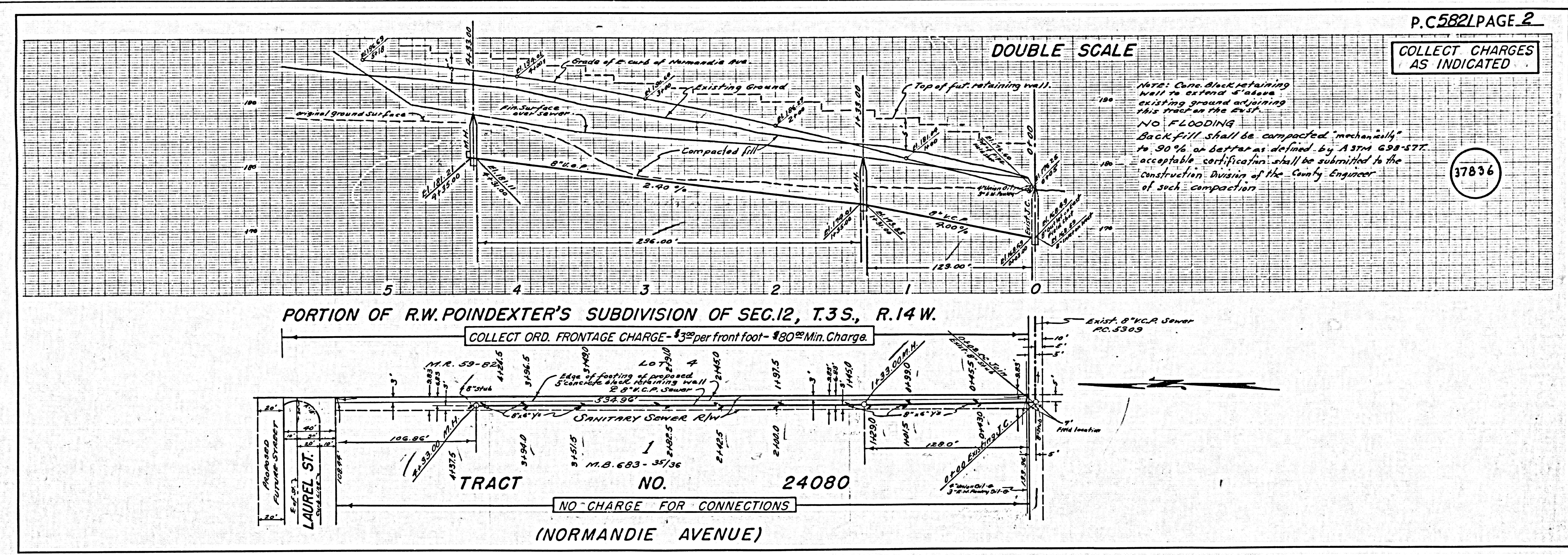
SUBMITTED BY: *Jack C. Gansing* Engr. DATE: 4-21-61
PLASTERERS - CANTINELA VALLEY REGIONAL ENGINEER, P.C.E.N.A.

REVISION
Widen easement and relocate 8" V.C.P. Sanitary sewer, August, 1963.
MSKITTICK ENGINEERING
Approved: *Edward Smith* 2-1-62
R.C.E. NO. 13106
DATE: 11/28/63

REVISION
Changed from 4 lots to 1 lot.
Approved: *Edward Smith* 2-1-62
R.C.E. NO. 7267

COLLECT CHARGES AS INDICATED

4-21-61



TRACT NO. 24080 P.C. 5821