

PRIVATE CONTRACT NO. 5823

W.S. 44
 2 SHEETS - 3 PAGES

SCALE: VERT. 1" = 4'
 HORIZ. 1" = 40'
 FEBRUARY, 1961
 PREPARED IN THE OFFICES OF
 TREADWELL ENGINEERING CORPORATION

By: *H.G. Trudell*
 REG. C. E. NO. 410
 FOR LEGEND SEE PLAN NO. S-A-64

30684

P.C.5823 TRACT NO. 26273

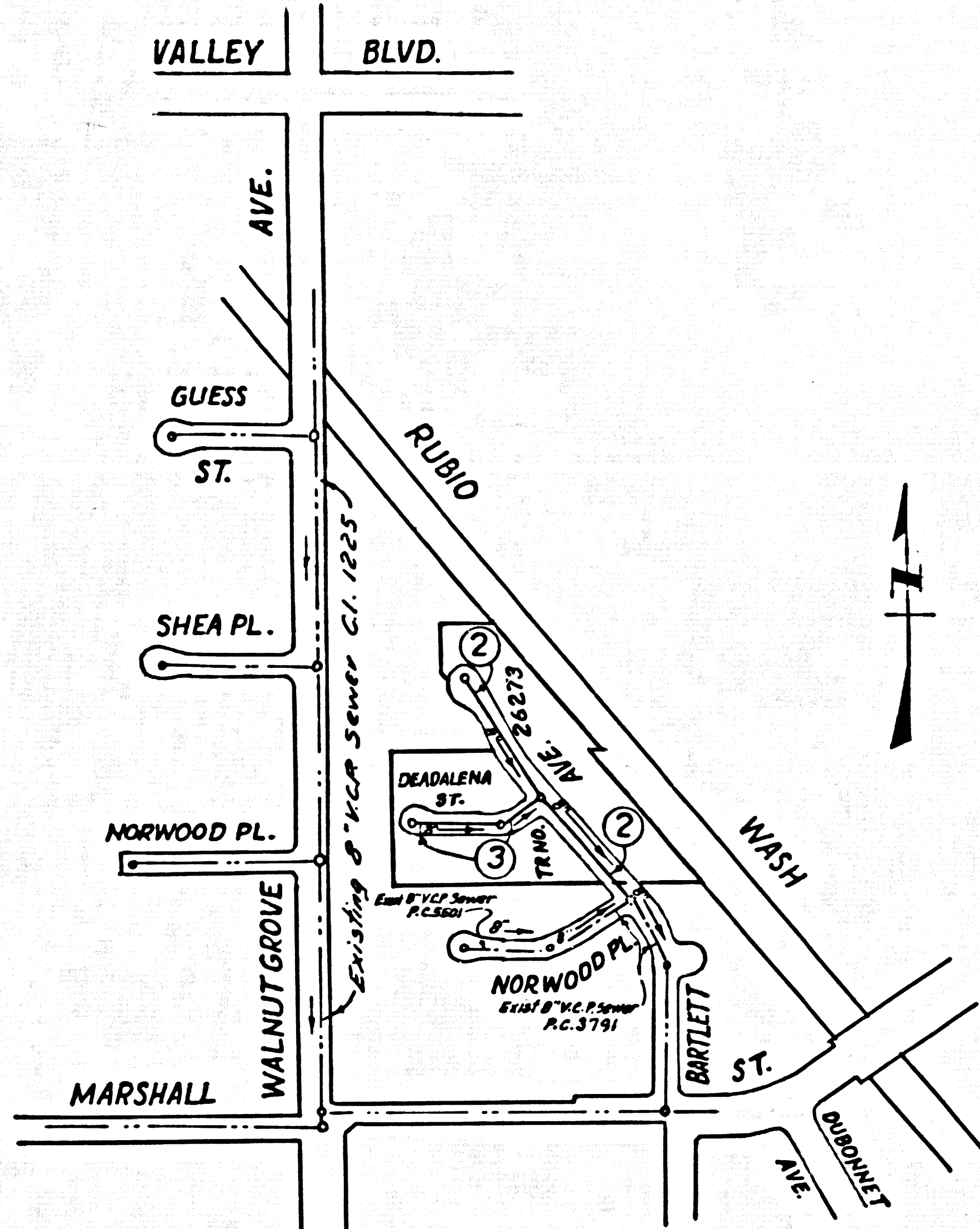
C.S.B.M. S.G. 899 ELEV. 291.132 ADJ. 1955 ROSEMEAD BLVD.
 Aluscotel Ave. & E. Marshall St.
 C.S. Mon. approx. @ intersec.

- NOTES:
1. PROVIDE STAKES ON THE PROPERTY LINE OR PROPERTY LINES PRODUCED AT RIGHT ANGLES TO THE SEWER LINE AT THE CENTER LINE OF EACH MANHOLE.
 2. NO REPRESENTATIVE OF THE CITY ENGINEER WILL SURVEY OR LAY OUT ANY PORTION OF THE WORK.
 3. THE OWNER OR HIS AUTHORIZED REPRESENTATIVE SHALL FURNISH THE CITY ENGINEER WITH GRADE SHEETS AND STATIONING FOR ALL HOUSE LATERALS AND Y BRANCHES AND SHALL PROVIDE STAKES FOR THEM AT THEIR PROPER LOCATIONS WITH STATIONING PLAINLY MARKED. ANY CHANGE IN LOCATION SHALL BE REQUESTED IN WRITING BY THE OWNER OR HIS REPRESENTATIVE.
 4. THE PRIVATE ENGINEER SHALL FURNISH THE HOUSE LATERAL DEPTH AT THE PROPERTY LINE BELOW THE TOP OF CURB ELEVATION FOR EACH HOUSE LATERAL ON THE GRADE SHEET.
 5. NO REVISIONS SHALL BE MADE IN THESE PLANS WITHOUT THE APPROVAL OF THE CITY ENGINEER.
 6. USE STANDARD MANHOLE FRAMES AND COVERS, S-117.A
 7. USE STANDARD STRENGTH PIPE
 8. USE CEMENT MORTAR OR "WEDGE-LOCK" OR "SPEED-SEAL" FOR ALL V.C.P. JOINTS PER SPEC'S, SECS. 36 & 48.
 9. RESURFACE ALL TRENCH WITHIN PAVED AREA TO MEET L.A. COUNTY ROAD DEPT. OR CALIF. STATE HIGHWAY REQUIREMENTS IN ACCORDANCE WITH PERMITS.
 10. ENCASE FOUR FEET OF SEWER AT POINTS OF INTERFERENCE WITH POLES, CASE III, S-117.
 11. HOUSE LATERALS TO BE CONSTRUCTED WITH INVERTS AT PROPERTY LINE 6 FEET BELOW CURB GRADE EXCEPT AS NOTED.
 12. ALL STRUCTURES SHALL BE BRICK SEWER STRUCTURES, S-104.
 13. FOR ALLOWABLE LEAKAGE TEST USE FORMULA NO. 1, SPEC'S, SEC. 54.
 14. THE CONTRACTOR SHALL NOTIFY THE CONSTRUCTION DIVISION BY TELEPHONE, MADISON 9-4741, EX. 1831 AT LEAST TWENTY-FOUR HOURS BEFORE STARTING ANY WORK UNDER THIS CONTRACT.
 15. STANDARD SPECIFICATIONS DATED OCTOBER 10, 1960 APPLY IN THE CONSTRUCTION OF THIS PROJECT.

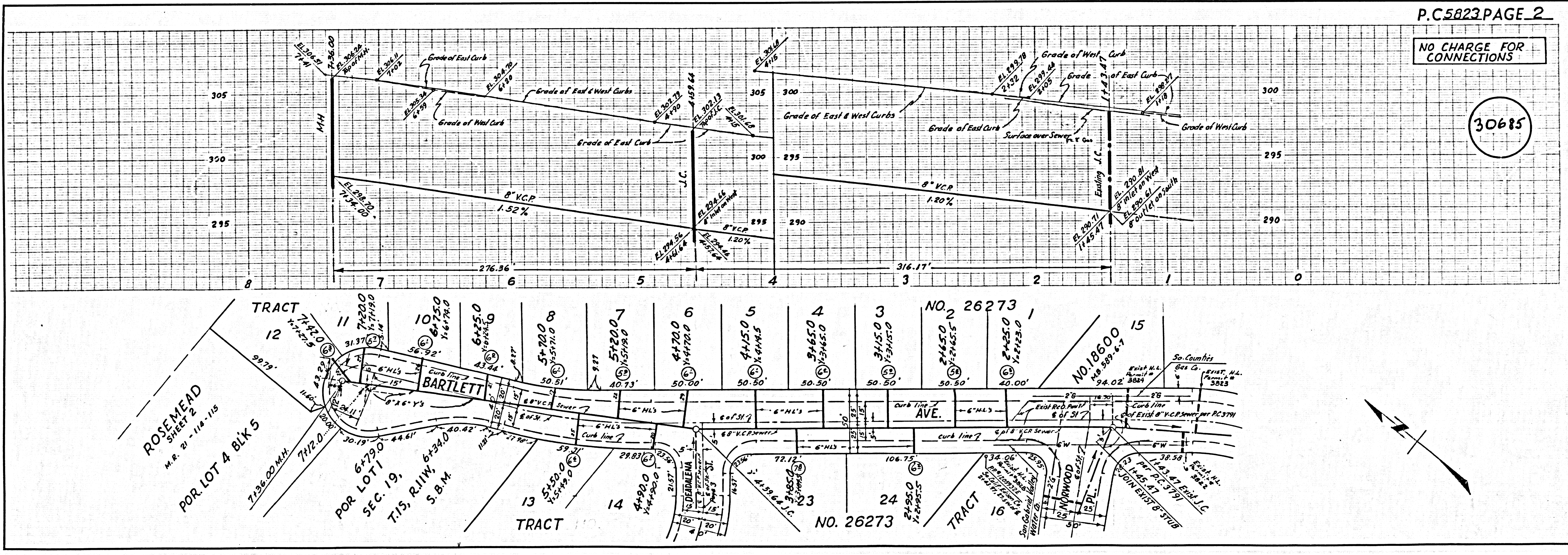
NO CHARGE FOR CONNECTIONS
R. J. Anderson 4/5/61

NO CONNECTIONS FOR THE DISPOSAL OF INDUSTRIAL WASTES SHALL BE MADE TO SEWERS SHOWN ON THESE DRAWINGS WITHOUT WRITTEN PERMISSION FROM THE CHIEF ENGINEER AND GENERAL MANAGER OF THE COUNTY SANITATION DISTRICTS.

CITY OF ROSEMEAD, CALIFORNIA
 APPROVED JOHN A. LAMBIE, CITY ENGINEER APPROVED C. R. COMPTON, CHIEF ENGINEER
 CO. SAN. DIST. NO. 12
 BY: *C. E. Bryant* ASST. SANITATION ENGINEER BY: *G. R. Compton* OFFICE ENGINEER
 CHECKED BY: *S. K. Under* 4-13-61
 OFFICE OF COUNTY ENGINEER, REG. C. E. NO. 3406
 SUBMITTED: *N. F. Bravender* SAN GABRIEL VALLEY REGIONAL ENGINEER



INDEX MAP
 SCALE 1" = 300'
 TRACT NO. 26273
 P.C. 5823



NO CHARGE FOR CONNECTIONS

30685

NO CHARGE FOR CONNECTIONS

30686

