

KEY MAP
SANITARY SEWER R/W
P.C.
SCALE: 1" = 200'

BENCH MARK
 54-4016 El. 240.050
 Set L. of N.E. edge of concrete to house NE
 15749 Lemon Drive ± 40' N. of Lemon Drive
 ± 25' N. of Santa Gertrudes Avenue.
 LA MIRADA 1959.

NO CHARGE FOR CONNECTIONS

ARTESIA BLDG. DIST. NO. 409

PROFILE ALIGNMENT AND GRADE OF
SANITARY SEWERS PAGE L
 TO BE CONSTRUCTED IN

SANITARY SEWER R/W.
PRIVATE CONTRACT NO. 5824

W.S.
 2 SHEETS; 3 PAGES
 SCALE: VERT. 1" = 5'
 HORIZ. 1" = 40' MAR., 1961
 PREPARED IN THE OFFICES OF
BARCLAY-PEARSON CO INC.
 BY: *Edward L. Deane*
 REG. C. E. NO. 9783

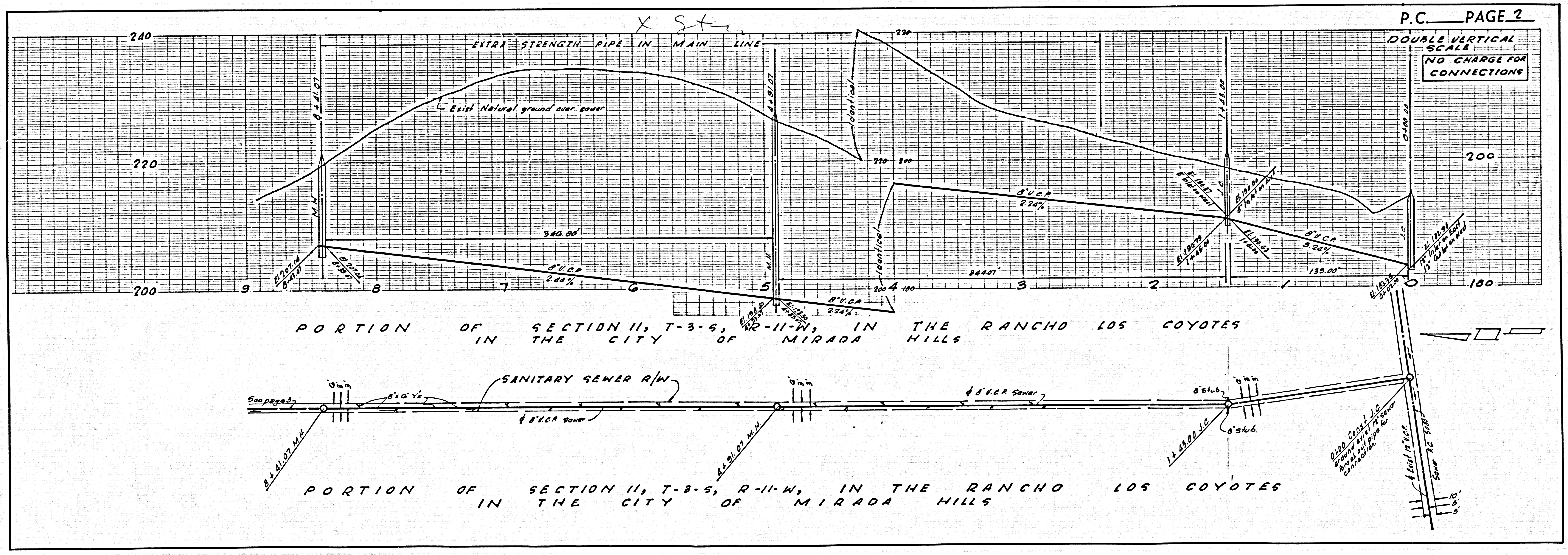
FOR LEGEND SEE PLAN NO. S-A-64

- NOTES:**
1. PROVIDE STAKES ON THE PROPERTY LINE OR PROPERTY LINES PRODUCED AT RIGHT ANGLES TO THE SEWER LINE AT THE CENTER LINE OF EACH MANHOLE.
 2. NO REPRESENTATIVE OF THE CITY ENGINEER WILL SURVEY OR LAY OUT ANY PORTION OF THE WORK.
 3. THE OWNER OR HIS AUTHORIZED REPRESENTATIVE SHALL FURNISH THE CITY ENGINEER WITH GRADE SHEETS AND STATIONING FOR ALL HOUSE LATERALS AND Y BRANCHES AND SHALL PROVIDE STAKES FOR THEM AT THEIR PROPER LOCATIONS WITH STATIONING PLAINLY MARKED. ANY CHANGE IN LOCATION SHALL BE REQUESTED IN WRITING BY THE OWNER OR HIS REPRESENTATIVE.
 4. THE PRIVATE ENGINEER SHALL FURNISH THE HOUSE LATERAL DEPTH AT THE PROPERTY LINE BELOW THE TOP OF CURB ELEVATION FOR EACH HOUSE LATERAL ON THE GRADE SHEET.
 5. NO REVISIONS SHALL BE MADE IN THESE PLANS WITHOUT THE APPROVAL OF THE CITY ENGINEER.
 6. USE STANDARD MANHOLE FRAMES AND COVERS, S-117, A.
 7. USE STANDARD STRENGTH PIPE.
 8. USE CEMENT MORTAR OR "WEDGE-LOCK" OR "SPEED-SEAL" FOR ALL V.C.P. JOINTS PER SPEC., SECS. 26 & 41.
 9. RESURFACE ALL TRENCH WITHIN PAVED AREA TO MEET L.A. COUNTY ROAD DEPT. OR CALIF. STATE HIGHWAY REQUIREMENTS IN ACCORDANCE WITH PERMITS.
 10. ENCASE FOUR FEET OF SEWER AT POINTS OF INTERFERENCE WITH POLES, CASE III, S-172.
 11. HOUSE LATERALS TO BE CONSTRUCTED WITH INVERTS AT PROPERTY LINE _____ FEET BELOW CURB GRADE EXCEPT AS NOTED.
 12. ALL STRUCTURES SHALL BE BRICK SEWER STRUCTURES, S-104, EXCEPT AS NOTED.
 13. FOR ALLOWABLE LEAKAGE TEST USE FORMULA NO. _____ SPEC., SEC. 54.
 14. MANHOLE TOPS IN UNIMPROVED RIGHTS-OF-WAY TO BE SIX INCHES ABOVE FINISHED GRADE.
 15. THE CONTRACTOR SHALL NOTIFY THE CONSTRUCTION DIVISION BY TELEPHONE, MADISON 9-4741, EXT. 8155, AT LEAST TWENTY-FOUR HOURS BEFORE STARTING ANY WORK UNDER THIS CONTRACT.
 16. STANDARD SPECIFICATIONS DATED OCTOBER, 1950 APPLY IN THE CONSTRUCTION OF THIS PROJECT.
 17. ALL THE LOCATIONS SHOWN FOR EXISTING SUBSTRUCTURES HAVE BEEN TAKEN FROM RECORDS AND THEIR CORRECTNESS AND COMPLETENESS IS IN NO WAY GUARANTEED. IT SHALL BE THE CONTRACTOR'S RESPONSIBILITY TO LOCATE ALL UNDERGROUND LINES OF EVERY NATURE WHETHER SHOWN HEREON OR NOT, AND PROTECT THEM FROM DAMAGE. THE CONTRACTOR SHALL BEAR THE TOTAL LIABILITY OF DAMAGE TO ANY LINE DAMAGED BY ANY OPERATION IN CONNECTION WITH THE PERFORMANCE OF THIS WORK.

NOTE:
 GRADES TO WHICH THIS IMPROVEMENT IS TO BE CONSTRUCTED ARE SHOWN ON PLANS AND PROFILES. GRADE POINTS FOR TOP OF CURBS, CENTER LINE OF SHEETS, OR CENTER LINE OF ALLEYS ARE SHOWN BY CIRCLES ON PROFILES. AT ALL POINTS BETWEEN DESIGNATED POINTS THE GRADE SHALL BE ESTABLISHED SO AS TO CONFORM TO A STRAIGHT LINE DRAWN BETWEEN SAID DESIGNATED POINTS.
 ELEVATIONS ARE IN FEET ABOVE U.S.C. & G.S. SEA LEVEL DATUM OF 1929.
 THIS DRAWING AND THE DATA HEREON ARE HEREBY MADE A PART OF THE SPECIFICATIONS.
 WORK SHALL BE CONSTRUCTED ACCORDING TO SPECIFICATIONS ON FILE IN THE OFFICE OF THE CITY ENGINEER AND SHALL BE PROSECUTED ONLY IN THE PRESENCE OF THE CITY ENGINEER.
 BEFORE WORK CAN BE STARTED, THE CONTRACTOR MUST OBTAIN A PERMIT TO EXCAVATE IN CITY STREETS FROM THE L.A. COUNTY ROAD DEPT., DISTRICT OFFICE NO. _____ AND MAKE A DEPOSIT WITH THE CITY ENGINEER ROOM 18415, 20 MANEER BLDG., ARTESIA SUFFICIENT TO COVER THE COST OF CONSTRUCTION INSPECTION AND RECORD PLANS.
 APPROVAL OF THIS PLAN BY THE CITY OF ARTESIA DOES NOT CONSTITUTE A REPRESENTATION AS TO THE ACCURACY OF THE LOCATION OF OR THE EXISTENCE OR NON-EXISTENCE OF ANY UNDERGROUND UTILITY PIPE, OR STRUCTURE WITHIN THE LIMITS OF THIS PROJECT. THIS NOTE APPLIES TO ALL PAGES.
 IF WORK IS TO BE DONE IN A STATE HIGHWAY, A PERMIT MUST BE OBTAINED FROM THE STATE OF CALIFORNIA, DIVISION OF HIGHWAYS, 120 SOUTH SPRING STREET.

LA MIRADA
CITY OF ARTESIA, CALIFORNIA
 APPROVED, JOHN A. LAMBIE, CITY ENGINEER APPROVED, C.E. COMPANY, CHIEF ENGINEER
 CO. SAN. DIST. NO. _____
 BY: _____ SANITATION ENGINEER BY: _____ OFFICE ENGINEER
 CHECKED BY: _____
 OFFICE OF CITY ENGINEER, REG. C. E. NO. _____
 SUBMITTED BY: _____
 LOS CERRITOS, REGIONAL ENGINEER R.E. 8971

7285 (CITY OF LA MIRADA) P.C. 5824

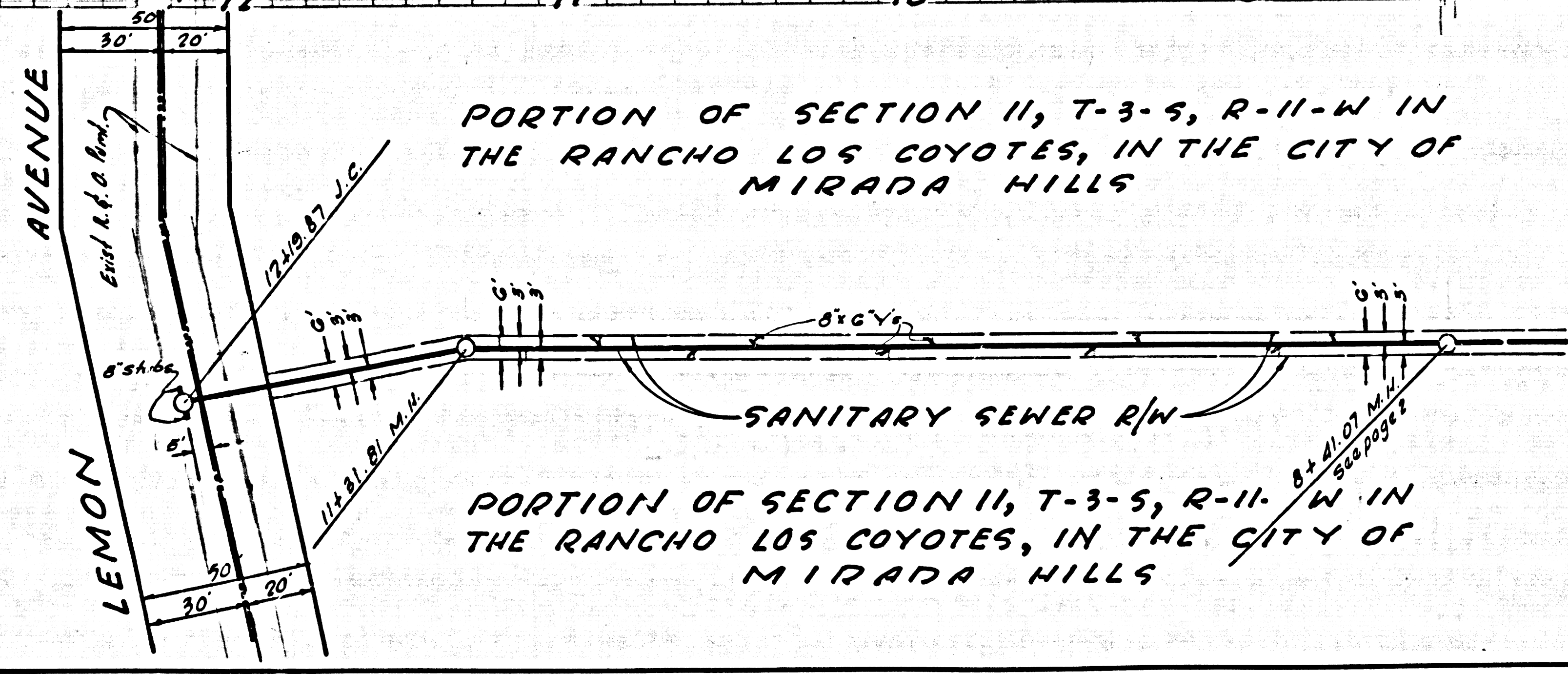
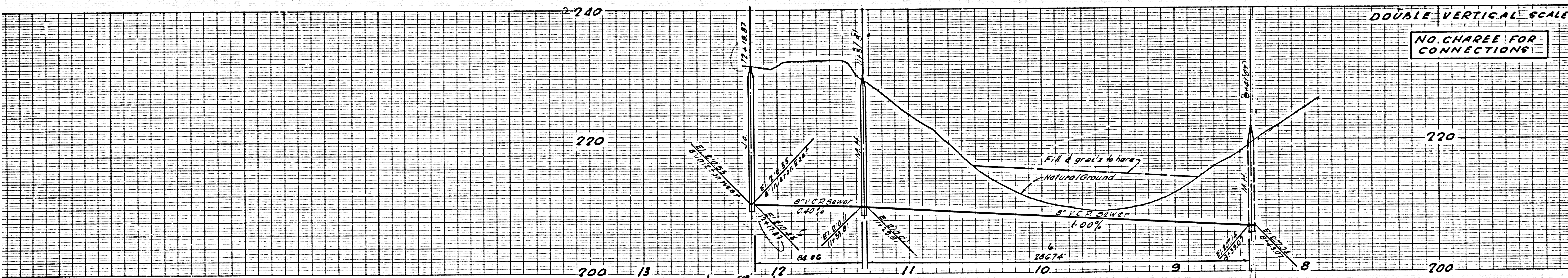


P.C. PAGE 2

DOUBLE VERTICAL SCALE
 NO CHARGE FOR CONNECTIONS

DOUBLE VERTICAL SCALE

NO CHARGE FOR CONNECTIONS



PORTION OF SECTION 11, T-3-S, R-11-W IN THE RANCHO LOS COYOTES, IN THE CITY OF MIRADA HILLS

PORTION OF SECTION 11, T-3-S, R-11-W IN THE RANCHO LOS COYOTES, IN THE CITY OF MIRADA HILLS

SCALE 1"=40'